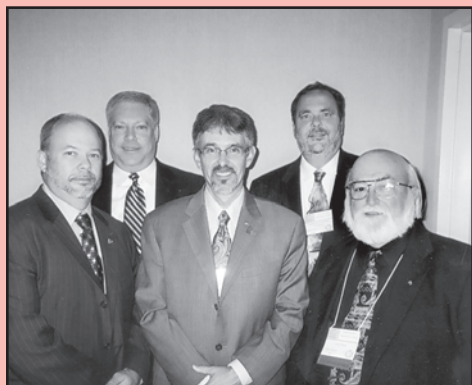
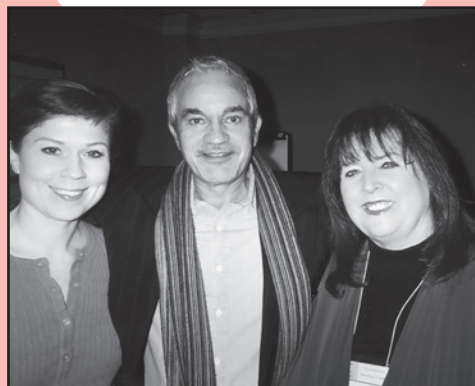
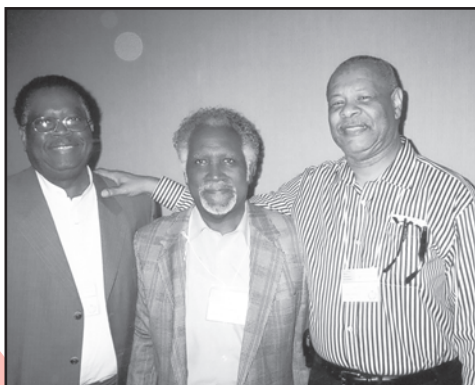
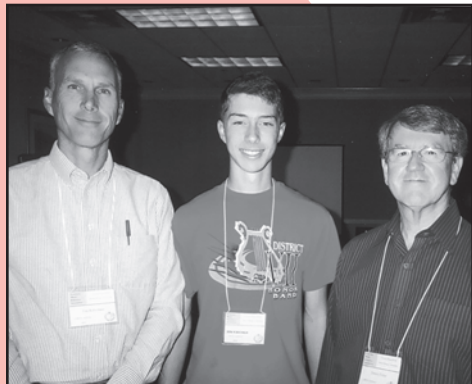


The Louisiana Musician

"The Official Journal of the Louisiana Music Educators Association"

Volume 76 Number 3 February 2011



Also Included:

LMEA Election Information

Hall of Fame Information

Outstanding Administrator Information

Outstanding Young Music Educator Award

Call for 2011 Conference Clinics

Music Dealers Depend on Yamaha.

With a newly designed 12" snare drum that reduces the carrying weight for students; lightweight aluminum bells that start on F instead of G to reduce confusion for beginners; and a modular component system that allows dealers, educators and students to create the kit they need with 'Go as they Grow' expandability, the new Yamaha student percussion kits provide ample reason for everyone to Depend on Yamaha.

Learn about these features and more at www.yamaha.com/usa



- SK-275 Mini Snare Kit with backpack
- SK-275R Mini Snare Kit with backpack and roller
- SPK-275 Bell Kit with backpack
- SPK-275R Bell Kit with backpack and roller
- SCK-275R Mini Combo Kit with backpack and roller
- SC-275 Rolling Cart for Student Kits



QUALITY • SUPPORT • PROFESSIONALISM • VALUE

©2010 Yamaha Corporation of America. All rights reserved



Where Creative Minds Are Ignited

Instrumental/Band Auditions

November 13, 2010 - 10 a.m. and February 26, 2011 - Noon
Contact Dr. Jay Jacobs at 337.475.5004 or jjacobs@mcneese.edu.

Piano Auditions

February 25, 2011 - Noon
Contact Dr. Christy Vogt at 337.475.5038 or cvogt@mcneese.edu.

String Auditions

February 26, 2011 - Noon
Contact Dr. Michael Buckles at 337.475.5034 or mbuckles@mcneese.edu.

Vocal/Choral Auditions

February 25, 2011 - Noon
Contact Dr. Darryl Jones at 337.475.5033 or djones@mcneese.edu.

For additional audition appointments contact the appropriate area coordinator.

For more information on other performing opportunities:
McNeese State University, Department of Performing Arts
337.475.5028 or mmartin@mcneese.edu

McNeese
STATE UNIVERSITY

A Member of the University of Louisiana System™

Box 92175, Lake Charles, LA 70609 • www.mcneese.edu

The Louisiana Musician

VOLUME 76

NUMBER 3

February 2011

In This Issue

From the President	3
From the Editor	4
District I	5
District II	5
District III	5
District IV	6
District V	6
District VI	7
District VIII	8
District IX	8
LAJE	9-10
LBA	10
LAKE	11
2010 All-State Photos	12-13
State Supervisor	14
Call for Hall of Fame	15
LMEA Audit	15
Outstand Youth Educator Form	16
Call for Outstanding Administrator	17
Call for Youth Educator	17
LMEA Administrator Award Form	18
LMES State Solo Festival Form	19-20
Conference Proposal	21
Conference Scenes	22
LMEA Election Candidates	23

Buyer's Guide

Yamaha	Inside Front cover
McNeese	1
Loyola	9
Superscope	11
National Piano Guild	11
Lafayette Music	24
Jazz at Lincoln Center	24
LMEA Awards	Inside Back Cover
Swicegood Music Co.	Back Cover

Louisiana Music Educators Association Board of Directors

LMEA Website: <http://www.lmeamusic.org>

PRESIDENT
Scotty Walker
108 Benton
Lafayette, LA 70507
sewalker@lpssonline.com

PRESIDENT-ELECT
Sara Bidner
11625 Archery Dr.
Baton Rouge, LA 70815
sarabidner@yahoo.com

PAST-PRESIDENT
James Hearne
341 Borel Dr.
Lake Charles, LA 70611
james.hearne@cpsb.org

EXECUTIVE SECRETARY
Bruce Lambert
P.O. Box 12046
Lake Charles 70612
brucelambert@att.net

DISTRICT DIRECTORS

DISTRICT I DIRECTOR
Greg Oden
2602 Chatwood Drive
Monroe, LA 71201
oden@opsb.net

DISTRICT II DIRECTOR
Johnny Walker
5146 Windermere
Alexandria 71303
walkerj@rapides.k12.la.us

DISTRICT III DIRECTOR
Robin Daigle
101 Delcy Drive
Broussard, LA 70518
radaigle@lpssonline.com

DISTRICT IV DIRECTOR
Richard Bresowar
1121 E. Rome Street
Gonzales 70737
bresowar@apsb.org

DISTRICT V DIRECTOR
Sharon Stephenson
1214 Laura Street
Sulphur 70663
sharon.stephenson@cpsb.org

DISTRICT VI DIRECTOR
Guy Wood
3817 Williams Place
Jefferson 70121
gwood68@aol.com

DISTRICT VII DIRECTOR
Jim Trant
4025 Hwy. 308
Raceland 70394
districtseven@bellsouth.net

DISTRICT VIII DIRECTOR
Carol Lupton
P. O. Box 984
Benton 71006
RLLupton@caddo.k12.la.us

DISTRICT IX DIRECTOR
Sharon McNamara-Horne
18449 Hosmer Mill Road
Covington 70435
sharon.mcnamara-horne@stpsb.org

DIVISION CHAIRS

BAND DIVISION
Craig Millet
45250 Stonewall Lane
Prairieville, LA 70769
craigm@apsb.org

VOCAL DIVISION
Fran Hebert
P. O. Box 61373
Lafayette, LA 70596
fwhebert@gmail.com

ORCHESTRA DIVISION
Joseph LeBlanc
9407 Prestonwood Circle
Shreveport, LA 71115
jeleblanc@caddo.k12.la.us

JAZZ DIVISION
Andy Pizzo
5798 Round Forest Drive
Baton Rouge, LA 70817

UNIVERSITY DIVISION
Andrew Hunter
114 Aurora Dr.
Pineville, LA 71360
ahunter@lacollege.edu

ELEMENTARY DIVISION
Michele White
1522 20th St.
Lake Charles 70601
mmwhite406@mac.com

COLLEGIATE MENC
Ed McClellan
7444 St. Charles Ave. #104
New Orleans, LA 70117
emcclellan@loyno.edu

PUBLIC RELATIONS
Daphne Richardson
411 Somerset Dr. Apt E
DeRidder, LA 70634
drichardson@beau.k12.la.us

EX-OFFICIO MEMBERS

STATE SUPERVISOR
Richard Baker, 4-212
Louisiana Dept. of Education
P.O. Box 94064
Baton Rouge 70804
Richard.Baker@la.gov

EDITOR:
The Louisiana Musician
Pat Deaville
P.O. Box 6294
Lake Charles 70606
patrick.deaville@cpsb.org

LBA PRESIDENT
Mary L. Wilkinson
117 D. Wilson Road
Pineville, LA 71360
wilkinsonm@rapides.k12.la.us

LAKE
Annette Larsen
2412 Luke St.
Lake Charles, LA 70605
alarsenmusic@cpsb.org

HALL OF FAME
Tom Wafer
1834 Wimpole St.
Baton Rouge 70815
tdwafer@worldnet.att.net

ACDA
Louise LaBruyere
8729 Hermitage Place
New Orleans, LA 70123-2754
llabruyere70123@yahoo.com

LAJE
Andy Pizzo
5798 Round Forest Drive
Baton Rouge, LA 70817

AOSA
Red Stick Chapter President
Gina Anthon
308 W. Church
Hammond, LA 70401
ganthon985@gmail.com



Official Journal of the
Louisiana Music Educators Association
(USPS 320-520)

The Louisiana Musician, the official journal of the Louisiana Music Educators Association (LMEA), is issued three times a year, in February, September, and November.

Periodicals Postage paid at Lake Charles, LA 70606.

In order to be included, news copy must be postmarked by the fifth of the month preceding publication. The LMEA assumes no responsibility for the opinions of individuals appearing in this publication.

The Louisiana Musician publication offices are located at 600 S. Shattuck St., Lake Charles, LA 70601.

POSTMASTER, send form 3579 to The Louisiana Musician, P.O. Box 6294, Lake Charles, LA 70606.

Subscriptions are available for non-members at a cost of \$25 per year. Write to The Louisiana Musician at P.O. Box 6294, Lake Charles, LA 70606. Send all inquiries and changes of address to this address.

Member subscription is part of the annual LMEA dues.

Please Visit Our Website

lmeamusic.org

Connecting the LMEA Website and THE LOUISIANA MUSICIAN

I encourage our membership to visit the new LMEA website. LMEA is making a sincere effort to provide its members with instant and accurate availability of information.

THE LOUISIANA MUSICIAN and the LMEA Website will be sharing much information. We are expanding the website and gradually changing the format of the magazine.

While the magazine will continued to be published during September, November and February, the website will post valuable information items not found in the magazine. We will also offer to magazine advertisers the opportunity to place ads in both the magazine and on the website.

The website will also post THE LOUISIANA MUSICIAN shortly after the magazine publication dates. The website will provide timely updates to published information throughout the year.

Some information traditionally published in the magazine will no longer be included in the magazine but will be posted on the website. An example of this would be our State Music Festival results.

It is our intention to continue to provide a quality magazine for our members but with some cost savings through expanded use of the website.



From the President *Scotty Walker*

In preparing an article for the February publication, I had the opportunity to reflect on the November conference. What an incredible experience for all! The All State Women's Chorale, Choir, Orchestra, Jazz Ensemble, Concert and Symphonic Bands continue to demonstrate the wonderfully talented students from throughout the great state of Louisiana. The exhibits provided a variety of resources for student and professionals alike. The clinics were both enlightening and refreshing. The opportunities for social networking continue to be one of the hidden treasures of any conference. Our students also enjoyed visiting with our State Universities and performances by this year's featured university, McNeese State University.

Overall a TREMENDOUS success!

Many thanks to Pat Deaville for his tireless work in putting it all together and Bruce Lambert for the administrative details. I also want to thank Sara Bidner in making it possible for Benney Ferguson, our Southern Division president, to attend our clinic. His comments about the activities of MENC were invaluable! We certainly look forward to the positive direction of MENC and being a part of one of the largest divisions in the nation.

In December, I had the opportunity to attend the Midwest Clinic in Chicago which continually serves as a model for all conventions. Unequivocally, one of the highlights of the conference was the foot stompin', pulse poundin', funkified to the bone performance by Louisiana's own, Fountainebleau High School Jazz Band, conducted by Lee Hicks. Congratulations Lee and students for representing Louisiana, birthplace of jazz, in such a manner. We're proud of you!

As we prepare for our second semester, please take advantage of the resources available through MENC and LMEA and keep advocacy at the forefront! Continue the efforts at improving individual players and singers by having them attend workshops/master classes or scheduling such events on your own campus. Have them participate in solo festival! We must continually renew our efforts to teach each and every student in ways that inspire!

**From the
Editor's Desk
Pat Deaville**
is Director of Curriculum
and Instruction
Calcasieu Parish Schools



Waiting for inspiration? Waiting for something or someone to motivate you? Waiting for the world to make you happy? Waiting, waiting, waiting? Are you just waiting your life away?

Hey, grow up...get busy. No one has a responsibility to provide you with inspiration or motivation or happiness.

As an adult these things must come from within. There are resources to help you. But your motor is only going to "rev up" to the extent you push down on your own accelerator.

Yes you can find some people and things that are inspirational to you. You can also have a boss/spouse/friend that gets you moving by "cracking the whip". But you will not achieve anything remotely close to your potential unless you are driven from within.

Festivals, auditions, and concerts can get your adrenalin pumping and get you focused. But if that is what you need to make you get up in the morning and get moving, you are really missing the bull's eye in the long term.

Motivational speakers/books/articles can be fun. But when the motivation speaker/book/article is done, what motivates you? Some things can prime the pump, but you've got to do your own pumping every single day.

Attitude is one of the very few things you can control in your life. You cannot be happy with a lousy attitude.

What happens to you is not under your control. What happens around you is not under your control. So don't rely on getting motivation from external sources.

External sources are not dependable or enduring. You are always with you. Depend on yourself for inspiration and motivation. Make yourself happy in a lasting way... not just for the moment.

Dream. Dream big. Nothing is as inspiring as you getting in touch with you. Positive dreams are cultivated by being in touch with what you really want. If you can't dream, you can't be happy. If you don't have a dream, you will never be consistently motivated.

By the way, failure is not a dream buster. Failure is a temporary condition. With the right attitude failure can be a building-block or a road-sign to success. Failure is not a dead-end unless you decide it is.

The environment around you will fluctuate. It will never be perfect. You don't need a perfect environment to be inspired, motivated or happy. All you need is you.



Notice

There will not be an issue of the
LOUISIANA MUSICIAN published in May.

Beginning in 2008-2009, the LOUISIANA MUSICIAN will be published only three (3) times during the school year. Issues will be published in September, November and February.

The informational items normally found in the May issue will be available on the LMEA website in May.

Over the next few years, it is the intention of the LMEA Board that our website become expanded in function.

It is our hope that members will visit the website at "www.lmeamusic.org" and develop a growing pattern of usage.

District I *Greg Oden*



Once again our district has had a very successful fall. We look forward to an equally successful spring semester. There are a number of events that we are preparing to host this spring. Please make every effort to get your paperwork in on time. The events are:

Solo and Ensemble Festival (Vocal)
February 15, 2011 - West Ouachita High School

District Large Ensemble Festival (Vocal)
March 3, 2011 - Louisiana Tech University

District Large Ensemble Festival (Instrumental)
March 8-9, 2011 - West Ouachita High School

Solo and Ensemble Festival (Instrumental)
Date and Place - TBA

Please contact me if you have any questions concerning any of our LMEA events. I look forward to hearing the fine bands and choirs from our district at festival this year.

District II *Johnny Walker*

I hope all of you had a great Christmas break and I am sure you are ready for a successful spring semester!

Please encourage all of your students to participate in the Honor ensembles that are available in the spring as well as solo and ensemble festivals. All of these activities build the individual student and provide wonderful opportunities for learning and producing better ensembles in our schools.

Please be aware of the deadlines for the various festivals and get completed entry forms to me as required. Schedules and judges need to be set and I appreciate all those who send in forms early.

On February 19th we will have instrumental solo and ensemble at Alexandria Senior High. Vocal solo and ensemble will be held February 22nd at Emmanuel Baptist Church. Instrumental Large Ensemble will be held at Pineville High on March 29th and 30th. Choir Large Ensemble will be held at Peabody High on March 31st.

Please visit our District II website at www.lmeadistricttwo.com for updates and information.

Thanks for all you do each day for your students and music in our schools!

District III *Robin Daigle*



As we begin the second half of our school year, I would like to personally express my wishes for everyone to have a happy and successful 2011. I also would like to congratulate our district's area high school bands for a great marching season. You all represented our district well locally and nationally. Thanks to Chris Smith, director of bands at Comeaux High, for chairing and hosting our first round All-State auditions. A big thanks to the University of Louisiana at Lafayette music department for again hosting the Southwest La. Band Directors' Association district marching festival. The event was held at the Pride of Acadiana's Cajun field. Special thanks to Dr. Brian Taylor and Dr. Gerald Waguespack, UL Pride of Acadiana Marching Band Directors; David Walker, UL Athletic Director; Ricky Bustle, UL Football coach; Phi Mu Alpha Music Fraternity; Sigma Alpha Iota Music Fraternity and the Lafayette Might Lion Band Booster Club.

The District III High School Honor Choir concert was held in October of 2010. The clinician was Dr. Mark Deakins from Kentucky Christian University. Thanks for the hard work by area choral directors for helping organize such an outstanding performance. By the time you read this article, our middle school vocal and band division's honor groups will have performed. Clinicians for elementary and middle honor choir are Christy Elsner from Kansas City, Kansas and Anthony Sears from New Orleans. Middle School honor band clinicians are Brett Babineaux, Denise Belanger, and Cheryl Floyd. Clinicians for the district's high school honor bands are Frank Wickes,

Craig Millet, and James Hearne. Thank you to all participating directors for your assistance in the continued success of our District III honor bands and choir clinics/concerts.

Please mark your calendars with the following upcoming events: March 14-15 (District III Choral Large Ensemble Festival) March 16, 17, 18 (District III Instrumental Large Ensemble Festival)

REMINDER: Festival entry forms (along with a photocopy of your current MENC membership card) and entry fees are due to the Festival Chairperson 30 days prior to the scheduled festival date.

***All information related to any District III or LMEA events will be posted on your respective District III websites: vocal district3choir.org and instrumental slbda.org.

On behalf of the band directors and students of District III, many thanks to Garth Alper, Dr. William Hochkeppel, Dr. Brian Taylor, Dr. Gerald Waguespack, and Troy Breaux for all their assistance and hospitality in hosting honor bands and large ensemble events.

I wish everyone the best of luck at future festivals and spring trips. As always, if I can be of any assistance, feel free to contact me at:

Email: rdaigle@lpssonline.com, Phone 337-277-9024, School address: Edgar Martin Middle School 401 Broadmoor Blvd., Lafayette, LA 70503

District IV *Richard Bresowar*



I hope everyone is off to a good start with festival preparations and second semester activities.

As I write this, I have just returned from Chicago and the Midwest Clinic. I was thinking about some of the benefits of attending events like "Midwest". One of the most exciting benefits is participating in conversation with colleagues from many different places and exchanging ideas that have been successful, or not so successful. Attending the various clinics and concerts are very important, but many times I gain more from the discussions that take place at various locales during the convention.

I sometimes hear complaints about our own state convention not having enough good clinics, and/or needing better exhibits. However, I find that I always leave LMEA with something useful, sometimes just by standing around in the lobby or at dinner. The best way to improve our state conventions is to increase attendance.

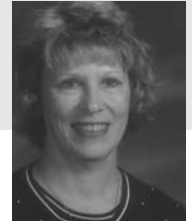
One important thing that I have noticed is that the people I see and meet at our LMEA convention or at "Midwest" are some of the most successful teachers in our profession. I think it is significant that many of our best teachers attend LMEA and are continuing to learn from their colleagues and peers. For young teachers, and more seasoned ones, this is a prime opportunity to improve your teaching skills. I really encourage each of you to make time to attend our state conventions and/or other music professional development opportunities.

Hopefully, everyone has checked the district website for information on festivals and other events. If you are new to the district, or are just entering the computer age, the address is www.districtiv.org. Schedules for district Large Ensemble Festival will be posted on the website as soon as they are available. Middle school instrumental ensembles will perform on March 28 or 29 and perform in order of classification and size of ensemble. High school instrumental ensembles will perform on March 30 and 31, also in order of classification and size of ensemble. If you need to request a specific day, please keep these dates and performance order in mind. Both instrumental festivals will be at Woodlawn High School. Vocal festival will be February 24 and 25 at First Baptist Church in downtown Baton Rouge. Dana Lux and Okemah Crawford will chair this event. YOU are responsible for reading the handbook, which is online at the LMEA website.

I have been sending emails to instrumental directors with pertinent information, and will continue to update information as it occurs. Vocal directors should be getting emails from Dana or Okemah regarding Vocal Large Ensemble Festival. If you have not been receiving information, please let me know at Richard.bresowar@apsb.org and I will add you to the list. Feel free to call if necessary at 225-405-7234.

I would like to encourage everyone to participate in an LMEA sponsored solo and ensemble event. Please contact me if you need information and details. Basic procedures for all festivals is outlined on the the district website. I have posted a special page for Solo and Ensemble and I will try to make it as easy as possible for you to host your own solo and ensemble event.

District V *Sharon Stephenson*



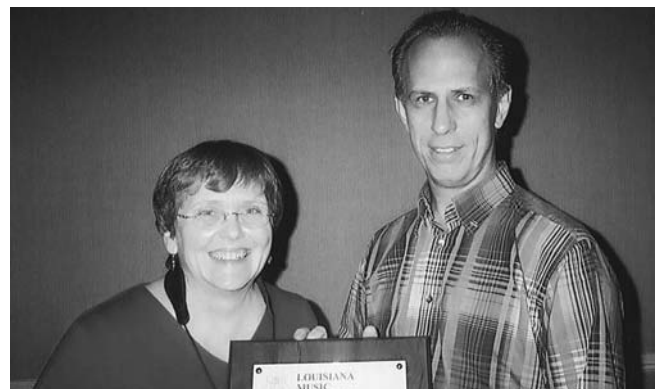
As we begin the second half of our school year, I hope everyone had a great holiday. I commend the directors of District V on the wonderful Christmas Concerts and parade performances. I also want to offer praise and thanks to all the board members and chairpersons for the awesome November LMEA Conference. McNeese was the featured university this year, and District V was well represented by the various groups in concert.

Our honor bands and honor choruses will have already taken place when you read this article. Many hours are put in by the directors and students to make this event successful. A big thank you goes to each chairperson for your time and work on each of these groups.

Solo and Ensemble Festivals begin in February. Band and Orchestra have various dates—send forms and information to Bruce Lambert. Vocal Solo and Ensemble will be held on Saturday, February 26. Send all forms and fees to Anna Lou Babin. Large ensemble festivals will be in March. Vocal will be held on March 23 and 24, and Instrumental will be March 29-31. Deadlines for all festivals are a month ahead of time. There is a \$50 late fee, so be prompt. Plan ahead. Include recording fees with the large ensemble entry. Make sure all checks are made out to LMEA.

The State Solo Festival will be held later in the spring. Check the LMEA website for details and entry forms.

Have a great spring—make beautiful music. If I can be of any assistance, call or e-mail me.



District VI Guy C. Wood



A belated Happy New Year! I hope that 2011 has been a happy and successful one for all of you so far. January saw the performances of many of our Honor Groups.

The District VI Band Directors Association presented the concerts of its Elementary Honor Band, Junior High Honor Band and Sr. High Honor Band last month. The Honor Concert was held on January 23 in Dixon Hall at Tulane University.

Our Elementary Honor Band Clinician this year was Abby Lyons, District VI's 2009-10 Elementary Band Director of the Year. The band was also chaired by Abby! Both "Chairman Abby" and "Clinician Abby" deserve kudos for an outstanding performance. The students in this band are our future – and that future looks very bright indeed.

Clinician for our Jr. High group was Marty Hurley from Brother Martin High School. Marty is the 2009-10 District VI High School Band Director of the Year as well as the latest inductee into the LMEA Hall of Fame! Our co-chairs were Katie Antis & Sheri Myer. Congratulations go to all three for assembling and preparing an outstanding group for an outstanding performance.

Our Sr. High Clinician was Chris Smith from Comeaux High School in Lafayette. The Sr. High Chairman was Alonzo Bowens. The Sr. High performance was phenomenal, and Chris and Alonzo are to be commended for outstanding jobs!

Many thanks also go to Barry Spanier at Tulane University, Abby Lyons at St. Clement of Rome, Marty Hurley and Dominick Caronna at Brother Martin High School, Alonzo Bowens at Lusher High School, Joe Caluda at Jesuit High School and Nick Compagno at Archbishop Chapelle High School for the use of their facilities for auditions, rehearsals or performances this year.

Still to come at UNO on April 17 this year are performances by our District Honor Jazz Ensemble, chaired by Mike Genevay at Haynes, and the All-Star Middle School Jazz Ensemble, chaired by Nick Compagno from Archbishop Chapelle.

The District also presented another successful Marching Band Festival this past November at Joe Yenni Stadium in Metairie. Thanks and congratulations go to Chairman Katie Codina for a very well-organized and well-run festival.

Our Choral Directors Association has been very busy also. Our vocal honor groups also performed spectacularly at the end of January at Loyola University. Chairing the honor choirs were Cheryl Dupont, Sr. High Honor Chorus, and Melissa Brocato, Elementary and Jr. High Honor Chorus. Sr. High Clinician was Ken Fulton from LSU, and the Elementary/Jr. High Clinician was Ana Morel from Boston. Congratulations go to everyone involved in these fantastic performances.

The District VI Solo & Ensemble Festivals begin shortly. If you haven't already done so, vocal directors should contact Louise LaBruyere at the Academy of Our Lady and instrumental directors should contact Mike Urbaszewski at Holy Cross for detailed information. Also, deadlines for Large Ensemble Festival arrive later this month. Band and orchestra directors should contact Randy Weaver while choral directors must contact Beth Rota.

We again want to express appreciation to Mike Orkus, District VI

Band Directors Association President, and Kathryn Claverie, Director of the District VI Choral Directors Association, for all of their hard work so far this year.

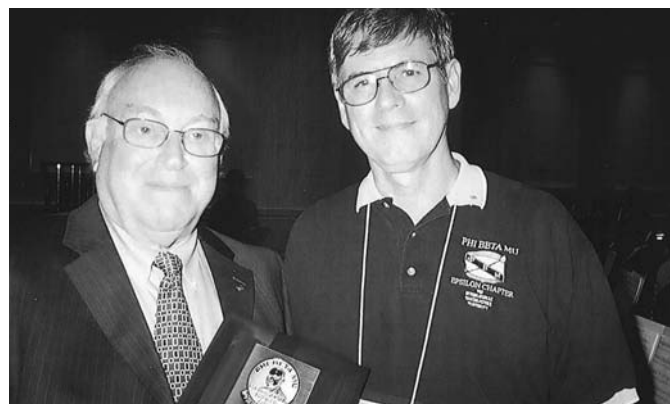
By the end of this month, the band directors in District VI will be marching in Mardi Gras parades! (Mardi Gras is March 8 this year.) Why, you say, would anyone in their right mind want to march in a five-mile parade? There are over a thousand reasons, and all have dollar signs in front! Five parades per year will give you over \$5000 for the purchase of, say, double reeds or tympani for your band program. You mean you thought we did parades because we wanted to? Shame on you!

Seriously, a band would have to sell a lot of candy to make the same money that our bands can make during carnival. Plus, more people will see and hear the band in just one New Orleans Mardi Gras parade than at a full year's worth of football games, festivals, and concerts put together. That's not necessarily a good thing; it's just the way things are. Sadly, it does prove the adage that no one ever lost money underestimating the American public's taste. Wouldn't it be great to see thousands of people attending a Spring Concert! Wouldn't it be great if the Louisiana Philharmonic or the New Orleans Opera drew as many people as Jazzfest!

Unfortunately, we have to live in the real world. All we can do is teach our students that there is much more to music than what they are bombarded with daily by the mass media. This is my forty-second year of fighting the good fight. It's a daunting task, and one that I'm proud to see the next generation of music teachers accepting. Know in your heart you're teaching something vital to our humanity, despite what others – especially administrators – may tell you by their actions.

Frill, hell – music is essential!

Once again, I wish you the best of luck during the remainder of the year. May all your goals for this school year be reached before the Class of 'twenty-eleven' graduates! I am proud to have the honor of serving as your District Director.



District VIII Carol Lupton



It is hard to believe that the first semester has come to an end and the second semester is already here. January, and the spring semester, brings with it opportunities for your students to perform with ensembles outside their regular school setting. Getting your students involved with these various ensembles can bring a perspective and appreciation for how music has enriched their lives. Membership selection for these ensembles is usually based on auditions or recommendations.

Before we know it we will all be busy with festival preparation. I use much of January for reading and listening to music I am considering for my performing ensemble. Some of you may already know what you are planning on programming for festival. As soon as you know what pieces your groups will be performing, take the time to secure your adjudicator scores. Taking care of that little detail ahead of time will help alleviate some of the last minute stress festival always seems to bring.

Caddo Magnet High School will host a Solo and Ensemble Festival in February that will begin our festival season. **The District VIII LMEA Choir Festival has been moved to March 3rd due of a conflict with the ACDA Conference. Choir Directors need to update your calendars to reflect this date change. Entry forms for the Choir Festival will be due the 3rd of February.** All other festival dates published in the September issue of the Louisiana Musician are unchanged.

If you have any questions or if there is anything I can help you with, please do not hesitate to call. Best wishes to you and your students for a successful second semester.

District IX Sharon McNamara-Horne



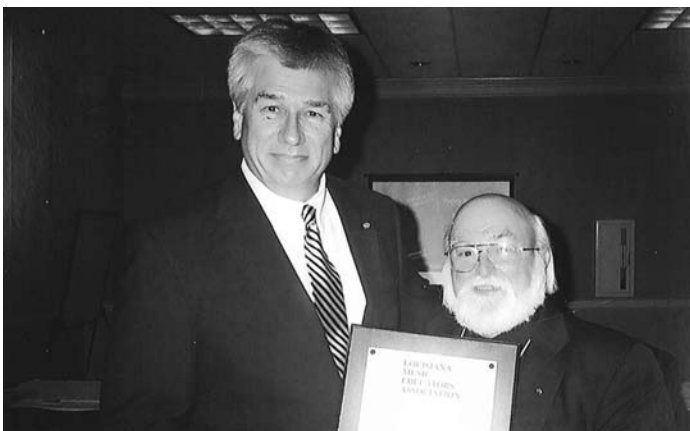
Happy New Year to all! I've heard so many positive comments from students and directors about the fall conference and All-State ensembles. Thank you to everyone who helped to make the All-State experience such a success for our students and to those who spent so much time organizing and planning the various conference sessions for teachers.

The District IX Honor Band and Honor Choir performances were held in late January. This year, we're excited about the Elementary Honor Choir that was added for fifth and sixth grade chorus students. Thank you to all of the teachers who worked so hard to organize and run each of the ensembles. And thank you to the clinicians for sharing your talent and dedication with our students: Dr. Joseph Hebert (high school band), Michael Genevay (jr. high band), Dr. Mark Taylor (high school choir), Anthony Sears (jr. high choir), Fran Hebert (elementary choir), and Andy Pizzo (jr. high jazz).

We all have so many performances and other responsibilities that pull our attention. Please be careful to check for deadlines for Solo and Ensemble and Large Ensemble Festival registration. All of the information you'll need can be found on either the district website www.district9.info or the state website www.lmeamusic.org. ALL registration forms and checks for both Band and Choir Large Ensemble Festivals should be sent to me (Sharon McNamara-Horne, Fontainebleau Jr. High, 100 Hurricane Alley, Mandeville, LA 70471).

Finally, let me offer my congratulations to Fontainebleau High's Jazz Band for their performance at Midwest. Bravo!!

As always, if I can be of any assistance please email me at Sharon.mcnamara-horne@stpsb.org or call at 875-7501 (FJHS - school office), 892-9124 (home), or 630-2798 (cell). Best wishes to all for a successful rest of the year. It's hard to believe that by the time this you receive this we'll be half way through the third nine-weeks!



News From LAJE Andy Pizzo



I want to take this opportunity to wish everyone a Happy New Year! We are now well underway with the 2nd semester and preparing for the various festivals and trips that many will participate in this spring. I want to take this time to remind everyone that the Louisiana Association for Jazz Education is always looking for new members. If you go to our website, www.lajelouisiana.org, and click on the link for membership, you'll see the directions on how to join. Mike "Doc" Morgan, our web master and past president, is constantly updating the site with jazz information. Mr. Jay Ecker will be assisting him with the website and updating it soon to give it a fresh new look. We are growing with each membership and would greatly appreciate you joining. If you have any questions as to what L.A.J.E. is or its purpose, please feel free to contact me and I'll be glad to speak with you on this topic (apizzo@ebschools.org). ALSO, on the site is the information on the various jazz festivals that are going on this semester: The Northwestern State University/L.A.J.E. State Jazz Festival in Natchitoches on Sat. Mar. 12. The guest artist will be trumpeter Dr. Ray Vasquez; The

Loyola University Jazz Ensemble Festival in New Orleans on Fri. Mar. 18 and Sat. Mar. 19. The guest artist will be trumpeter Nicholas Payton; The McNeese State University Jazz Festival will be on Sat. May 7. They will have trombonist Scott Whitfield as the guest artist. All information for fees, forms, and contact numbers and emails are on the site. Even if you are just getting your jazz program started or it is just a 2nd semester ensemble, expose your students to the experience of a jazz festival. One of the biggest differences, in my opinion, between a concert band festival and a jazz band festival has to do with the "hands-on" comments, given by one of the stage judges in a master class style clinic immediately following your performance, and the non sight-reading components. Yes, you can receive some fairly general comments, but the comments tend to be more of a one on one or small group lesson in which you can take away individual information to put into your arsenal of jazz teaching techniques. The comments seem to be more personal and geared toward a more specific educational aspect for you and your band's development. If nothing else, consider taking some of your students to listen to some of the bands at these festivals. Listening is the single most important teaching tool that we have when trying to learn the various styles of jazz and what a jazz musician sounds like. Besides listening, the guest artists are top notch and will perform, as well as give master classes, and always are the highlight to the festival.

I also want to take this moment to speak about the Jazz Education Network Conference (www.jazzednet.org) that took place in New Orleans, at the Roosevelt Hotel, from Thurs. Jan. 6 - Sat.

Continued on next page.

LOYOLA UNIVERSITY NEW ORLEANS

COLLEGE OF MUSIC AND FINE ARTS

MUSIC EDUCATION DEPARTMENT

Please Accept this Invitation to the Loyola University
Music Education Lecture Series
Dr. Bruce Pearson

March 26, 2011

Nunemaker Hall ✕ 9 am - 3 pm

This Workshop is "Free" to Music Teachers



Dr. Pearson will discuss:

- *His New Method "Tradition of Excellence,"*
- *Research "Why Music is Valuable in School?"*
- *Practical Ideas for Effective Music Teaching*

For more information, contact

Dr. Edward McClellan

Coordinator of Music Education

Ph.: 504-865-2085 Email: emcclell@loyno.edu

Please Plan to Stay for a Performance by the
Loyola University Wind Ensemble
Mr. James Curnow
Guest Clinician & Conductor
Roussell Hall ✕ 3 pm



For more information, contact

Dr. Joseph Hebert

Director of Bands, Prof. of Music Education

Ph.: 504-865-2852 Email: jghert@loyno.edu

Continued from previous page.

Jan. 8. Our own LMEA All State Jazz Ensemble was selected as a performance group and had the privilege of performing under the direction of Mr. Rick Condit, director of saxophone studies and jazz ensembles at McNeese State University, and their guest artist, drummer Peter Erskine. Louisiana was well represented by other groups as well: The Loyola University Jazz Ensemble, under the direction of Mr. John Mahoney, with guest clarinetist/tenor saxophonist Victor Goines; The East Baton Rouge All Parish Middle School Honor Jazz Band (the only middle school jazz ensemble at the entire convention), coordinated by Mrs. Jan Dupre' and under the direction of LAJE Hall of Famer, Mr. John Gerbrecht, and Mr. Andy Pizzo, who was also sponsored by the Getzen Co. as their guest trombonist; The John Mahoney Big Band, under the direction of Mr. John Mahoney,

and guest clarinetist Evan Christopher, and the Fontainebleau High School Jazz Ensemble 1, under the direction of Mr. Lee Hicks, with guests Bonerama (trombone rock band), Rich Lavel on tenor sax, and Erik Morales on trumpet. All of these groups made LAJE, LMEA, and Louisiana proud!

Trust me, L.A.J.E. is up and coming and will only grow into what you would like it to be for jazz education in Louisiana. Help create a better state of jazz for our tomorrow by joining L.A.J.E. today! Again, feel free to browse our website and contact us with your questions and concerns. We are here to serve you for the greater good of jazz in our schools.

News From LBA Mary Wilkerson

New semester. New year. What a blessing! As we are kicking things off, please put your LBA membership renewal on your to-do list. Membership will be valid from January 2011 thru January 2012. The fee for active membership is \$50.00. Please take a moment to fill out the LBA membership form found at www.labandmasters.org and mail it with your membership fee to Cheryl Corkran, LBA Executive Secretary at the following address: 605 Anthony St., Bossier City, LA 71112.

All band directors who are current LMEA members will soon receive 2011 All-Star Band nomination forms. If you do not receive one, or know someone who did not, please contact me so I can drop one in the mail for you. The coordinators will make every effort to include at least one student from every school that sends in nominations.

High school directors, a new opportunity for your students is the 2011 LBA All-Star High School Jazz Band. Nomination forms and audition requirements will be sent to each LMEA District Director. Please feel free to contact Keith Rogers for more information. 337.280.7912 tkrtbone@aol.com.

The All-Star dates for all three bands are May 31st and June 1st at Angelle Hall on the University of Louisiana at Lafayette campus.

The All-Star Band chair placement material for those students who are chosen for the concert bands is posted in this publication. Auditions will take place on the first day of rehearsals and will determine chair placement. We are on Set I for 2011 and have included cuts to shorten preparation and audition times.

The LBA All-Star Band is one of the only showcases for our middle school students at the state level and the educational experience continues to be of great value for all. Mark your calendar. I look forward to seeing all of you in June.

LBA MIDDLE SCHOOL ALL-STAR BANDCHAIR PLACEMENT AUDITION MATERIAL

The following is audition material for those students who are chosen for the All-Star concert bands. The audition will determine chair placement. All prepared music is taken from the Rubank Advanced Method, Book 1 with the exception of the percussion. Percussion chair placement material will be sent directly to the student. Directors are responsible for assuring their students have the correct audition information! This year we are on Set I.

SCALES

Scales should be tongued ascending and slurred descending at a minimum speed of quarter note equals 72 in a sixteenth note pattern. Octaves requirements for Bb, F and G scales are shown in concert pitch. Chromatic scale requirements are NOT notated in concert pitch but rather in actual instrument pitches.

OCTAVE REQUIREMENTS

INSTRUMENT	Bb	F	G	CHROMATIC
Flute	1	2	2	C-G, 2+ Oct.
Oboe	2	1	1	C-C, 2 Oct.
Bassoon	2	2	1	F-F, 2 Oct.
Clarinet	2	2	2	E-E, 3 Oct.
Bb Bass/Contra Clarinet	1	1	1	E-G, 2+ Oct.
Eb Contra Clarinet	1	1	1	E-G, 2+ Oct.
Alto/Bari Sax	1	2	2	C-F, 2+ Oct.
Tenor Sax	2	1	1	C-F, 2+ Oct.
Trumpet/Baritone T.C.	1	2	2	F#-G, 2+ Oct.
French Horn	1	1	1	F-F, 2 Oct.
Trombone/Baritone B.C.	1	2	2	E-F, 2+ Oct.
Tuba	1	2	2	F-F, 2 Oct.
Melodics	2	2	2	G-G, 2 Oct.

PREPARED MUSIC: SET I

FLUTE-pg. 70, #4—beginning to fine

CLARINET-pg. 42, #19, top line—beginning thru meas. 22

OBOE-pg. 67, #3—beginning thru meas. 14

BASSOON-pg. 69, #2—first four lines

LOW CLARINET (clarinet book)-pg. 43, #20—bottom line

ALL SAXES-pg. 42, #24—beginning thru meas. 24

TRUMPET-pg. 69, #5—first page only

FRENCH HORN-pg. 71, # 5—beginning thru meas. 22

TROMBONE AND BARITONE B.C.-pg. 36, #20, top line—beginning thru first fermata

BARITONE T.C. (trumpet book)-pg. 36, #20, top line—beginning thru first fermata

TUBA-pg. 27, #3—beginning thru first note of meas. 16

MELODICS (oboe book)-pg. 67, #3—beginning thru meas. 14

SNARE DRUM-Demonstrate the following rudiments,

open-close-open. Long Roll, 5 Stroke Roll,

7 Stroke Roll from pp to ff evenly in 30 seconds.

"Growing through Giving"

The Biggest Piano Event in the World

All Spring –
– En roll Early

**Guild Auditions provide
milestones from year to year
as measurements of progress**

Sponsored by
the Largest
Organization of
Piano Teachers
in the World



Audition participation
and absence from school
APPROVED BY
TEXAS EDUCATION
AGENCY

National Guild of Piano Teachers

Teachers Division of
American College of Musicians
Founded in 1929 by Iri Allison
International Headquarters
P.O. Box 1807
Austin, Texas 78767 U.S.A.

I am interested in joining the Piano Guild. Please send
me more information about membership and
Guild Goals.

MR.
MRS.
MISS

(PRINT OR TYPE NAME AND ADDRESS)

ADDRESS

CITY STATE ZIP

News From LAKE Annette Larsen



I hope everyone had a restful and rejuvenating holiday. I am very excited to begin my term as president of the Louisiana Association of Kodaly Educators. Kari McCarty has done an outstanding job as president for the past two years. Our officers for this year are

Kari McCarty Proksch, past-president; Sheila Manning, president-elect; Peggy Fletcher, secretary; Lori Young, treasurer; Ann Eisen, member-at-large; and Madeline DeHart, member-at-large.

The OAKE National Conference will be March 17-19, in Minneapolis, Minnesota. The conference choirs begin March 16. I hope many of you will be able to attend. It is always such an inspiring conference with so many outstanding sessions to rekindle our teaching and the conference choirs are always awesome.

The Kodaly Institute at McNeese will be June 13-July 1, with orientation on June 12. Registration is in March. The deadline for scholarships is May 1. You can contact Ann Eisen at anneisen@bellsouth.net for more information. I highly recommend this summer course to anyone who would like to revitalize their teaching.

The McNeese Children's Choir Camp will be June 27-July 1. This is a day camp for students with unchanged voices who have completed grades 3-8. The campers join the Kodaly Institute choir in a concert on Friday evening. You can contact Sheila Manning at sheilamanning@suddenlink.net for more information.

I hope you all have a great spring. You can contact me at alarsen-music@suddenlink.net.

SUPERSCOPE®



PSD410
\$799



PSD450
\$1199

Superscope 400 Series of Music Practice and Digital Recording Systems

The tools, performance, and high quality necessary for **musicians, vocalists, students** to improve, and for **educators** to save time.

RECORD WAV OR MP3 FILES TO SD CARD OR HDD
BATTERY OPERATION FOR TRUE PORTABILITY
CREATE PRACTICE LOOPS
VOCAL REDUCTION
FILE EDITING

USB FOR EASY TRANSFER OF FILES TO PC OR FLASH DRIVE
LARGE COLOR LCD FOR EASY OPERATION
OVERDUB & PUNCH IN/OUT
TEMPO & KEY CONTROLS
PRO INPUTS/OUTPUTS

2010 All-State Groups



2010 All-State Symphonic



2010 All-State Concert Band



2010 All-State Mixed Choir

2010 All-State Groups



2010 All-State Jazz Band



2010 All-State Women's Chorale



2010 All-State Orchestra

State Supervisor Richard Baker



In December, Lt. Governor Dardenne spoke to the Louisiana Partnership for the Arts and members of the public. His message had two clear points: the lieutenant governor's office is moving forward with arts education and all arts educators must start communicating to legislators relative to the importance of arts in our society. John Abodeely, Kennedy Center Alliance for Arts Education Network, stated that arts education was as political as it was educational. He also spoke to advocates about including a *value proposition* for arts education in public education. We refer to these essential values as foundational skills or, lately, 21st century learning skills.

Value propositions include concepts that good music educators regularly incorporate: cooperation, responsibility, and reflection to name a few. Harvard University professor emeritus, Jerome Kagan's (2009) reasons for requiring arts education include: strengthening the student's self confidence, personal and social agency, schematic and procedural thinking, aesthetic productivity, and collaborative production.

Adding to the recommendations of Lt. Governor Dardenne and Mr. Abodeely, I encourage you to engage your elected officials, whether they are State or Federal legislators, state or local officials, and, especially, school board members. How can we begin to engage them? One idea is built on the basic truth that everyone enjoys receiving invitations. One of the best ways to gain authorities as arts supporters is to send an invitation to attend a concert and, there, invite them to share their thoughts on music and arts education. For stronger impact, have the students produce and send the invitations. This breaks the ice as we begin to discuss weightier issues of quality education for the community.

The second idea is built on recent readings and videos I have seen about elected officials. The most powerful communication to an elected official is a letter. Recently a biochemist raised the alarm that quality education must include a balance of the arts and sciences. Gregory Petsko (2010a) wrote, in an open letter the President of the State University of New York, about the importance of arts and humanities in higher education. This well-calculated, eloquent, and artistic message communicated the following eternal truth: science plus beauty equals truth. Essentially we must remind ourselves that we educate *more* than the students. His letter made a strong case for why all students should experience a comprehensive, quality arts education. Take the time to follow the link below and read it.

What is significant about this article is that it was written from a scientist's perspective. Petsko followed this up with another column in Nature News. Links to these documents can be found following this article.

"If arts and humanities are to survive, we who work in the sciences need to stand up for them and alongside them. Why? We should proclaim not only our love for the humanities as educated people, but their crucial role in our lives as professional scientists. I learned

to think critically, analyse deeply and write clearly in my university humanities courses, not in my science courses. I found humanities the most valuable subjects in school. They still broaden my thinking, help me to make connections and aid my ability to communicate" (Petsko, 2010b)

Let us take the advice from our state and national leaders and communicate these values to our state legislators, state board members, local officials, and local school board members relative to what a free society values as part of a "Whole Education for a Whole Child". If we are passionate and informed about an issue, we have to communicate that to the people who represent us and encourage others to do so. What is the best way? Send an old fashioned handwritten letter once a month.

The following was adapted from Omar Ahmad, City Council for San Carlos, CA, a short video of his presentation can be found online. He suggests that an effective letter to an elected official is outlined as follows. In the first paragraph, invite them in by expressing your appreciation for the work they do. The second paragraph, inform them about the issue. The third paragraph invites them to your way of thinking. If you have appreciated them, presumed innocence, and invited them to new choices, you have a chance of creating a new supporter. In the final paragraph, tell them that you would be happy to provide them information on the issue. Sign the letter with your title, this shows them that you have influence. Below is a short outline of the video, but really take the six minutes, the presentation is both pleasant and informative.

Paragraph 1 - I appreciate...

Paragraph 2 - But this issue is important for all children. Attack the tactic, not the person.

Paragraph 3 -

Who so badly misinformed you on this issue? I'd like to see their evidence.

Paragraph 4 - If you have no one providing clear information on this issue, please let us help.

I have had many conversations with others who tell me that they don't think they are talented. I tell them, neither am I. However, it was the skills and the discipline that I experienced in music and arts education that have contributed to my success. We must make it clear to all that music education is about more than selecting and sorting talent or playing/singing the right notes. The knowledge, skills, and dispositions (habits) are those essential for all citizens in a free and representative society.

Ahmad, O. (2010). Political change with pen and paper. [Video]. Retrieved from http://www.ted.com/talks/lang/eng/omar_ahmad_political_change_with_pen_and_paper.html

Kagan, J. (2009). Why the arts matter: Six good reasons for advocating the importance of arts in school. Retrieved from: <http://www.dana.org/news/publications/detail.aspx?id=24040>

Petsko, G. A. (2010a). A Faustian bargain. *Genome Biology*, (11,10). doi:10.1186/gb-2010-11-10-138. Retrieved from: <http://genomebiology.com/2010/11/10/138>

Petsko, G. A. (2010b). Save university arts from the bean counters. *Nature News*, <http://www.nature.com/news/2010/101222/full/4681003a.html>

Hall of Fame Nominations Sought

The Hall of Fame for Music Educators in Louisiana was instituted in 1982 and is sponsored by the LMEA, the purpose being to honor music educators who, by virtue of their contributions, are recognized as being the most highly regarded professional leaders in music education in Louisiana.

A nominee, living or deceased, active or retired, should be or should have been:

1. A professional music educator who has made a long-standing, significant contribution to the school music program in Louisiana.
2. A person who has demonstrated a concern for music education by active involvement in local, district, state, regional or national professional organizations.
3. An active music educator or administrator in music education in a Louisiana school or institution of higher learning for a period of not less than twenty years.
4. An active member of the Louisiana Music Educators Association.

Persons wishing to submit names of candidates for induction into the LMEA Hall of Fame should send a letter of nomination, along with a biographical sketch, to the chairman of the LMEA Hall of Fame Committee, to be received no later than May 1st. The biographical sketch should include the achievements of the candidate in the criteria listed above. Nominees will not be considered without the biographical sketch. inductees are selected by the Hall of Fame Committee by secret ballot. The current chairman of the LMEA Hall of Fame Committee is Tom Wafer, 1834 Wimpole Drive, Baton Rouge, Louisiana 70815.

LMEA Audit 2009-10 School Year

Categories	08-09 Expenses	08-09 Income	08-09 Net	09-10 Expenses	09-10 Income
All State	\$ 16,253.81	\$ 13,685.99	\$ (2,567.82)	\$ 16,000.00	
All State Band	\$ 5,947.65	\$ 9,585.00	\$ 3,637.35	\$ 6,000.00	
All State Choir	\$ 9,228.22	\$ 12,041.00	\$ 2,812.78	\$ 9,000.00	
All State Jazz	\$ 1,927.50	\$ 1,602.00	\$ (325.50)	\$ 2,500.00	
All State Orchestra	\$ 3,003.17	\$ 4,520.00	\$ 1,516.83	\$ 3,500.00	
Board Meetings	\$ 8,827.89	\$ -	\$ (8,827.89)	\$ 9,000.00	
Conference	\$ 18,165.09	\$ 19,232.50	\$ 1,067.41	\$ 20,000.00	
District Festivals	\$ 5,706.90	\$ 17,097.25	\$ 11,390.35	\$ 6,000.00	
Election	\$ 656.73	\$ -	\$ (656.73)	\$ 1,000.00	
Hall of Fame	\$ 196.32	\$ -	\$ (196.32)	\$ 500.00	
Handbook	\$ -	\$ -	\$ -	\$ -	
Magazine	\$ 14,322.68	\$ 3,966.00	\$ (10,356.68)	\$ 14,000.00	
Medals	\$ 7,670.40	\$ 8,735.50	\$ 1,065.10	\$ 10,000.00	
Membership	\$ -	\$ 15,572.36	\$ 15,572.36	\$ -	
MENC Conference	\$ 1,026.50	\$ -	\$ (1,026.50)	\$ 2,500.00	
Office	\$ 2,566.22	\$ -	\$ (2,566.22)	\$ 2,800.00	
Salary	\$ 17,116.40	\$ -	\$ (17,116.40)	\$ 17,200.00	
State Band Festival	\$ 7,710.20	\$ 19,070.00	\$ 11,359.80	\$ 8,000.00	
State Choir Festival	\$ 9,375.88	\$ 17,206.50	\$ 7,830.62	\$ 8,000.00	
State Orch. Festival	\$ -	\$ -	\$ -	\$ -	
State Festival	\$ 13,545.12		\$ (13,545.12)	\$ 14,000.00	
TOTAL	\$ 143,246.68	\$ 142,314.10	\$ (932.58)	\$ 150,000.00	\$ 150,000.00
FOUNDATION			\$ 172,000.00		\$ 7,000.00

Outstanding Young Music Educator Award

Purpose: To recognize outstanding merit in music education. This award may be made to one or more individuals new to the profession who have served their students, communities and profession in an exemplary manner. Nominations must be submitted by an LMEA member.

Nominee Information

(Must be an LMEA Member)

Name: _____

Position: _____

School: _____

City/Zip: _____

LMEA District #: _____

Email: _____

Phone: _____

Nominator Information

(Must be an LMEA Member)

Name: _____

Position: _____

School: _____

City/Zip: _____

LMEA District #: _____

Email: _____

Phone: _____

This nomination form must be accompanied by:

- A letter of nomination from an LMEA member, including a description of the nominee's qualifications for the award.
- Two additional letters of support from persons familiar with the nominee's work. These letters may be from an administrator, colleague, parent, or community member.

Nominee qualifications

Letters of support should address these qualities:

- The nominee must be a member in good standing of the Louisiana Music Educators Association
- The nominee must have completed one year but not more than five years of teaching.
- The nominee must have high professional and ethical standards.
- The nominee must have a commitment and dedication to his or her students.
- The nominee must have met the needs and interests of students, having brought about positive results in learning.
- The nominee must have enthusiasm for teaching, love for music, and a desire to further the musical education of his or her students.
- The nominee must have shown motivation toward professional growth and development.
- The nominee may not be a past recipient.

Send this form on or before **April 1st** to:

Bruce Lambert
Executive Secretary LMEA
P.O. Box 12046
Lake Charles, LA 70612

Outstanding School Administrator Award

Awards and presentations will be made annually to outstanding school principals and/or superintendents who demonstrate support for and commitment to high-quality arts education programs in their schools. The influence of such administrators is a major factor in improving music education in school systems across the state. Elementary school principals, secondary school principals and school district superintendents may be selected to receive this award. Individuals holding titles as assistant principal and assistant or associate superintendent also qualify. This award is not intended to honor music supervisors, music coordinators, etc. Administrators receiving awards will be notified by the LMEA Executive Board and a presentation honoring them will take place at the LMEA Annual Conference.

Selection by the LMEA Committee will be based on the following criteria:

1. The school or school district under the administrator's supervision must have an exemplary music program, with the majority of the music staff holding LMEA membership.
2. The administrator must have served in the administrative position in the same school or district for no less than three
3. years.
4. The administrator must be an active advocate for arts education in the school and community.
5. A financial commitment to music programs must be demonstrated in the school or school district.
The administrators must show strong leadership, good school management, and good rapport with teachers, parents, students, and other administrators.
6. Music supervisors/coordinators are not eligible for this award. Nominators must submit the following for each administrator:
 - 1.
 2. Completed School Administrator nomination Form verified
 3. and signed by the nominator.
Resume of nominated administrator.
 4. Two letters of support, including one from the music education faculty in the administrator's school district.
 5. A picture of the administrator suitable for publicity purposes.
Name and address of the administrator's local newspaper, television and radio station where applicable.
Additional support materials such as press clippings if available.
 - 6.

Outstanding Young Music Educator Award

The LMEA Board of Directors has established an award to recognize outstanding merit in music teachers who are relatively new to the teaching profession. School music teachers who are members of LMEA and who have exhibited outstanding dedication to music education, who have inspired enthusiasm and success in music learning, and who have demonstrated initiative in professional growth and development, are eligible to be considered for the award.

Nominations for the award must be made by a current LMEA member. The recipient(s) of this award will be notified by the LMEA Executive Board, and will be honored at the LMEA State Conference in Baton Rouge in November, 2011. Nominations for the award are due to Bruce Lambert, LMEA Executive Secretary, by April 1, 2011.

Selection for this award will be based on the following criteria:

The nominee must be a member in good standing of the Louisiana Music Educators Association.

The nominee must have completed one year but not more than five years of teaching.

The nominee must have high professional and ethical standards.

The nominee must have a commitment and dedication to his or her students.

The nominee must have met the needs and interests of students, having brought about positive results in learning.

The nominee must have enthusiasm for teaching, love for music, and a desire to further the musical education of his or her students.

The nominee must have shown motivation toward professional growth and development.

The nominee may not be a past recipient of the award.

Nomination for the award must be made by an LMEA member, and include the following:

A letter of nomination from an LMEA member, including a description of the nominee's qualifications for the award.
Two additional letters of support from persons familiar with the nominee's work. These letters may be from an administrator, colleague, parent, or community member.

LMEA Outstanding School Administrator Award Form

School District: _____

Selection (check one): Elementary Principal: _____
 Secondary Principal: _____
 Assistant Principal: _____
 Superintendent: _____
 Assistant/Associate Superintendent: _____

Name: _____

Title: _____

School: _____ Telephone: _____

School Address: _____

City: _____ State: _____ Zip: _____

Please answer the following questions on a separate sheet in support of your selection. This form must be signed by the nominator and accompanied by a resume of the administrator, two letters of support (one from a member of the music faculty), a publicity photo, and a list of local media and their addresses.

1. How long has the school or school district been under the administrator's supervision?
2. Describe some of the features of the school or district under the administrators leadership that demonstrate how the music program is exemplary. Please include in your description answers to the following:
 - a. Describe the music curricular offerings and time allotment of students.
 - b. How have music programs in the school/district been expanded or improved as a result of the administrator's efforts?
 - c. Have students or programs in the school or district won awards for achievement or recognition in the arts?
3. How has the administrator been an advocate for music and arts education in the school and community?
4. How has the administrator demonstrated financial commitment to music programs in their school or district?
5. Give examples of the administrator's strong leadership, good school management, and positive rapport with teachers, parents and students.
6. Add any other information that supports selection of this administrator.

This nomination has been submitted by LMEA member:

Name: _____ School: _____

School Address: _____ Telephone: _____

City: _____ State: _____ Zip: _____

**LOUISIANA MUSIC EDUCATORS ASSOCIATION
STATE SOLO FESTIVAL
OFFICIAL ENTRY FORM 2010-2011**

DIRECTORS TAKE NOTE: LMEA SUPPORTS 100% THE LAWS REGARDING THE DUPLICATION OF SCORES. ANY INFRACTION WITHOUT THE WRITTEN PERMISSION FROM THE PUBLISHER WILL RESULT IN THE DISQUALIFICATION OF THE PARTICIPANT.

ENTRY DEADLINE: APRIL 1, 2011

NO REFUND AFTER SCHEDULE HAS BEEN SET. LATE FEE OF \$50.00 IF POSTMARKED OR HAND DELIVERED AFTER DEADLINE. SCHEDULE AND GENERAL INFORMATION WILL BE PLACED ON THE LMEA WEBSITE (lmeamusic.org). SCHEDULE WILL BE AVAILABLE ON THE WEBSITE BY APRIL 15, 2011. **MAIL TO: LMEA STATE SOLO FESTIVAL, P.O. BOX 12046, LAKE CHARLES, LA 70612**

GENERAL INFORMATION:

DATE: SATURDAY, MAY 7, 2011 ENTRY DEADLINE: APRIL 1, 2011
SITE: UNIVERSITY OF LOUISIANA, LAFAYETTE
COST: \$20.00 PER SOLO (checks payable to: LMEA)
AWARDS: GOLD MEDAL – (All performing soloists will receive a State Solo Patch)

STUDENT ELIGIBILITY – INSTRUMENTAL

1. All students must be a member of the band or orchestra at their school. If there is no band or orchestra program at the school, students may be submitted by an LMEA member.
2. High school students must play a solo from the Texas Prescribed Music List (PML) level one or level two. Middle/Elementary school students must play a solo from the Texas PML level one, two or three.
3. Students are eligible for one solo on an instrument.
4. All solos with piano accompaniment must be performed with the accompaniment. (Smart music, CD, etc. is acceptable.) (CD, etc. - piano part only)
5. Memorization is NOT required.
6. High School soloists are allotted 8 minutes. Middle school soloists - 6 minutes.

STUDENT ELIGIBILITY – VOCAL

1. All students must be a member of the choir at their school. If there is no choir program at the school, students may be submitted by an LMEA member.
2. High school students must sing a solo from the Texas Prescribed Music List (PML) – any level. Middle/Elementary school students are not eligible.
3. Students are eligible for one solo.
4. All solos with piano accompaniment must be performed with the accompaniment. (Smart music, CD, etc. is acceptable.) (CD, etc. - piano only)
5. Memorization IS REQUIRED.
6. Vocal soloists are allotted 6 minutes.

Please note: LMEA highly recommends live accompaniments. A piano will be in each performance site. Students using Smart Music, CDs etc. must provide ALL equipment. Students must set up, perform and take down all equipment in the allotted time. Solos (requiring an accompaniment) performed without accompaniment, for any reason, will receive comments only. Performance times will be strictly enforced.

School _____ Director's Name _____
 Address _____ Home Address _____
 City, Zip _____ City, Zip _____
 Phone () _____ Home Phone/ Cell () _____

Only teachers who are members of LMEA or non-members who pay the \$100 non-member fee may enter this event.
YOU MUST ATTACH A PHOTOCOPY OF YOUR LMEA/MENC MEMBERSHIP CARD

	Student's Name	Inst. / Voice	Grade	Title / Composer	Accompaniment
1					
2					
3					
4					
5					
6					
7					
8					
9					
10					
11					
12					
13					
14					

_____ Soloists @ \$20.00 each \$ _____
 _____ \$100 non-member fee(if applicable) \$ _____
 _____ \$50 late fee (if postmarked after April 1) \$ _____
 TOTAL FEES ENCLOSED \$ _____

MENC # _____ Expires _____

CERTIFICATION:

This is to certify that the students in this organization are all bonafide members of this school and meet all requirements for participation.

 School Principal

 Director

LOUISIANA MUSIC EDUCATORS ASSOCIATION
Proposal for State Conference Clinic Session
LMEA State Conference/Nov. 17-21, 2011/Crowne Plaza Hotel/Baton Rouge, LA

Name _____ MENC Member __Yes__No

Title _____

School, Company or Organization _____

Address _____

City -State _____ Zip Code _____

Email Address _____

Work Phone _____ Home Phone _____

I. Subject Area: ☐ Vocal ☐ Elementary ☐ Band ☐ Jazz
 ☐ Orchestra ☐ General ☐ Technology
 ☐ Other (Please Specify)

II. Appropriate Grade Level: ☐ Pre-Elementary ☐ Elementary
 ☐ Middle/Jr. High ☐ High School
 ☐ College/Univ. ☐ All Levels

III. Session Title: _____

IV. Type of Session: ☐ Clinic ☐ Demo Group ☐ Panel Discussion

V. Session Description: _____

VI. Equipment Requirements (The conference provides only basic AV equipment.)

I understand that if my proposal is accepted, my presentation could be scheduled on any day of the conference and at any time. I understand that I will not receive any funds from LMEA.

Signature _____

Date Submitted _____

Submit Application To: Pat Deaville, State Conference Chairman
P. O. Box 6294
Lake Charles, LA 70606

Applications must be postmarked by June 10, 2011



LMEA Election Candidates - February 2010

As of 12/31/10, the Past President reported these nominations received for the 2011 elections.

DISTRICT DIRECTORS

District 1	Greg Oden
District 2	Johnny Walker
District 3	Robin Daigle
District 4	Richard Bresowar
District 5	Sharon Stephenson
District 6	Guy Wood
District 7	Jim Trant
District 8	Carol Lupton Mark Minton
District 9	Sharon McNamara Horne

PUBLIC RELATIONS

Daphne Richardson

Carol Lupton



Carol Lupton is a lifelong resident of Louisiana and is a Graduate of Centenary College. Prior to earning her Bachelor of Music in Music Education from Centenary, she attended Northwestern State University. Ms. Lupton had been employed by both the Caddo and Bossier Parish school systems during her 20 year career and is presently in her eleventh year as Director of Bands at Ridgewood Middle School in Shreveport. In addition to teaching middle school band Ms. Lupton has also taught elementary music, middle school recorders and beginning piano.

As a member of the LMEA board she has served on various committees, and currently chairs the Constitution and Bylaws Committee. Ms. Lupton's professional affiliations include Louisiana Bandmasters Association, Louisiana Music Educators Association, Music Educators National Conference and Phi Beta Mu.

Mark Minton

Biography of Mark Minton not available at the time of publication.





LAFAYETTE MUSIC

"The Friendly Music Store"

3700 Johnston St. * Lafayette LA 70503

Phone: (337) 984-3700

Toll Free: (800) 999-1625



Stanbury
UNIFORMS

WILL GREEN

Louisiana Representative

Cell: (337) 277-7791

musicmanwg@yahoo.com

**YAMAHA • KING • SELMER-BACH • LUDWIG • GEMEINHART
LEBLANC-HOLTON • BOOSEY & HAWKES • PEARL • PREMIER • CONN
BUFFET • JUPITER • ROSS • DINKLES • DIRECTOR'S SHOWCASE • STYLE PLUS**

**ATTENTION
LOUISIANA
BAND DIRECTORS:**
Perform at the Essentially Ellington Regional
High School Jazz Band Festival!

Saturday, April 30, 2011
University of Louisiana at Lafayette • Lafayette, LA
Participate in performances, workshops, and master classes
with expert musicians/clinicians from Jazz at Lincoln Center
in your own back yard!

For more information about Essentially Ellington Regional Festivals:
Visit jalc.org/EssentiallyEllington and click on 'EE Regionals'
or contact us at ee@jalc.org or 212-258-9812.

essentially
ellington

jazz
at lincoln center

LOUISIANA MUSIC EDUCATORS AWARDS

Official Suppliers For • LMEA Medals

Contact:

Bruce Lambert

P.O. Box 12046, Lake Charles 70612

Phone: 337/436-5099

DISTRICT FESTIVAL MEDALS

Medals with PURPLE Ribbons (Superior in Concert)

_____ @ \$2.25 each \$ _____

Medals with WHITE Ribbons (Superior in Sight Reading)

_____ @ \$2.25 each \$ _____

Medals with RED, WHITE & BLUE Ribbons (Sweepstakes)

_____ @ \$2.25 each \$ _____

STATE FESTIVAL MEDALS

Medals with GREEN & WHITE Ribbons (Superior at State Festival)

_____ @ \$2.25 each \$ _____

Sub-Total

\$ _____

Shipping (\$5.00 per 50 Medals)

\$ _____

TOTAL including Shipping

\$ _____

Payment enclosed

\$ _____

Ship To: _____
Name Title

School Name: _____ Phone Number _____

Street Address: _____

City: _____ State: _____ Zip: _____

ALL SHORTAGES AND DAMAGED MERCHANDISE SHOULD BE REPORTED IMMEDIATELY

Vendors who are interested in receiving information concerning the providing of services to LMEA in the area of T-shirt sales, photography, and/or recording should contact:

Bruce Lambert

Executive Secretary, LMEA

P.O. Box 12046

Lake Charles, LA 70612



The Louisiana Musician

THE OFFICIAL PUBLICATION OF L.M.E.A.

PAT DEAVILLE, Editor

P.O. BOX 6294

LAKE CHARLES, LOUISIANA 70606

STANDARD
U.S. POSTAGE
PAID
PERMIT # 51
70601

Swicegood Music Company of Louisiana, Inc.

COMPLETE MUSIC SERVICE



308 E. Prien Lake Rd. • Lake Charles, LA 70601

(337) 477-2704

West Central Outlet • Rosepine • 462-6888

email: swicegoodmusic@bellsouth.net

"WE SPECIALIZE IN BANDS"

ARMSTRONG - BUFFET - CONN - JUPITER - KING - SELMER

LUDWIG - MAPEX - PEARL - PREMIER DRUMS

CRATE - EDEN & HARTKE - MACKIE - AMPS/PA SYSTEMS

DAISY ROCK - EPIPHONE -

OSCAR SCHMIDT - WASHBURN - GUITARS

COMPLETE BAND ACCESSORIES

MUSIC - REPAIRS

"Learn What Music Can Do For You"

JOHN W. KELLEY • ORVILLE A. KELLEY

Right Note Studio

PROFESSIONAL LESSONS
PROVIDED AT ALL LEVELS