

The Louisiana Musician

"The Official Journal of the Louisiana Music Educators Association"

Volume 78 Number 2 November 2013

2013 Annual LMEA State Music Conference



***Fran Hebert
Hall of Fame***

Music Students Depend on Yamaha

With a height adjustable pneumatic strut system for correct playing position, graduated rosewood bars aged to perfection, and a resonator design that compliments over 30 years of tuning and voicing experience, the full line of Yamaha marimbas give music students ample reason to depend on Yamaha. Learn about these features and more at www.4wrd.it/YMLMU



Gas-strut height adjustment system



YM-5104 5 1/2 octave marimba



/YamahaPercussion



@YamahaPerc

QUALITY · SUPPORT · PROFESSIONALISM · VALUE

©2013 Yamaha Corporation of America. All rights reserved



McNeese State University™

BANDS



Band service awards / scholarships are available to students regardless of academic major



Showdown @ Sundown Marching Festival
October 26, 2013 • 5pm

Fall Audition Day
November 16, 2013 • 2pm

High School Honor Band
March 7-8, 2014

McNeese All-Star (High School) Summer Camps
June 15-19, 2014



@McNeeseBands



McNeeseStateUniversityBands



McNeesebands.com

The Louisiana Musician

VOLUME 78

NUMBER 2

November 2013

In This Issue

From the President	3
President-Elect	4
From the Editor	4
Band Division Chairman	5
Jazz Division Chairman	5
Collegiate MENC Chairman	6
LAJE President	7
Vocal Division Chairman	7
Orchestra Division Chairman	8
Elementary Division Chairman	8
President Red Stick Chapter AOSA	9
LMEA 2013 Hall of Fame	10
LAJE 2013 Hall of Fame	10
Outstanding Administrator Awards	11
Outstanding Young Music Educators	12
LMEA Conference Pre-Registration	15
Conference at a Glance	16-17
Conference Schedule	18-23
All State Conductors	24-25
Consultants & Guest Performances	26-35

Buyer's Guide

Yamaha	Inside Front Cover
McNeese	1
Lafayette Music	12
National Guild	12
Quaver Music	13
OAKE	14
Southeastern University	36
LMEA Awards	Inside Back Cover
Swicegood	Back Cover

Louisiana Music Educators Association Board of Directors

LMEA Website: <http://www.lmeamusic.org>

PRESIDENT
Sara Bidner
11625 Archery Dr.
Baton Rouge, LA 70815
sarabidner@yahoo.com

PRESIDENT-ELECT
Sharon McNamara-Horne
18449 Hosmer Mill Road
Covington, LA 70435
sharon.mcnamara-horne@stpsb.org

PAST-PRESIDENT
Scotty Walker
108 Benton
Lafayette, LA 70507
sctywalk@cox.net

EXECUTIVE SECRETARY
Bruce Lambert
P.O. Box 12046
Lake Charles, LA 70612
brucelambert@att.net

DISTRICT DIRECTORS

DISTRICT I DIRECTOR
Greg Oden
106 McAlpine Dr.
West Monroe, LA 71291
oden@opsb.net

DISTRICT II DIRECTOR
Johnny Walker
5146 Windermere
Alexandria, LA 71303
johnny.walker@rpsb.us

DISTRICT III DIRECTOR
Brett Babineaux
304 N. Michot Rd.
Lafayette, LA 70580
bababineaux@lpssonline.com

DISTRICT IV DIRECTOR
Richard Bresowar
1121 E. Rome Street
Gonzales, LA 70737
Richard.bresowar@apsb.org

DISTRICT V DIRECTOR
Sharon Stephenson
1214 Laura Street
Sulphur, LA 70663
sharon.stephenson@cpsb.org

DISTRICT VI DIRECTOR
Guy Wood
3817 Williams Place
Jefferson, LA 70121
gwood68@aol.com

DISTRICT VII DIRECTOR
Jim Trant
4025 Hwy. 308
Raceland, LA 70394
districtseven@bellsouth.net

DISTRICT VIII DIRECTOR
Carol Lupton
P. O. Box 984
Benton, LA 71006
RLlupton@caddo.k12.la.us

DISTRICT IX DIRECTOR
Neal Naquin
70325 Petit Rd.
Mandeville, LA 70471
neal.naquin@stpsb.org

DIVISION CHAIRS

BAND DIVISION
Jay Ecker
700 Royal Street
Lake Charles, LA 70607
jay.ecker@cpsb.org

VOCAL DIVISION
Fran Hebert
P. O. Box 61373
Lafayette, LA 70596
fwhebert@gmail.com

ORCHESTRA DIVISION
Joseph LeBlanc
9407 Prestonwood Circle
Shreveport, LA 71115
bigdaddysgtjoe@earthlink.net

JAZZ DIVISION
Lee Hicks
69285 3rd Ave.
Covington, LA 70433
Ralph.hicks@stpsb.org

UNIVERSITY DIVISION
Jay Jacobs
5200 Nelson Rd. #408
Lake Charles, LA 70605
jjacobs@mcneese.edu

ELEMENTARY DIVISION
Michele White
1522 20th St.
Lake Charles, LA 70601
mmwhite406@mac.com

COLLEGIATE MENC
Ed McClellan
7444 St. Charles Ave. #104
New Orleans, LA 70117
emcclellan@loyno.edu

PUBLIC RELATIONS
Carolyn Herrington
2208 Blankenship
DeRidder, LA 70634
dhsband@beau.k12.la.us

EX-OFFICIO MEMBERS

EDITOR:
The Louisiana Musician
Pat Deaville
P.O. Box 6294
Lake Charles, LA 70606
patrick.deaville@cpsb.org

LBA PRESIDENT
Nanci Smith
985-384-1687
nsmith@stmary.k12.la.us

LAKE
Sheila Rae Manning
980 Pleasant Hill Road
DeRidder, LA 70634
sheilamanning@suddenlink.net

HALL OF FAME
Tom Wafer
1834 Wimpole St.
Baton Rouge, LA 70815
tdwafer@att.net

ACDA
Alissa Rowe
SLU 10815
Hammond, LA 70402
arowe@selu.edu

LAJE
Andy Pizzo
5798 Round Forest Dr.
Baton Rouge, LA, 70817

AOSA
Red Stick Chapter
Sherry Barron
9676 Wesson Street
Baton Rouge, LA 70809
sherrybarron@bellsouth.net

From the President Sara Bidner

Looking for Opportunities—Orchestrating Success

Why do we get involved . . . in teaching, in performing, in organizations? Why did we go into music in the first place? Why do our students participate in music? Does it not fulfill needs that we all have—to belong, to find support, to be recognized, to make music together?

Fortunately, opportunities were available to us that gave us experiences to grow in and through music. We now provide opportunities for our students to do the same. The responsibility is ours to provide avenues through which students can reach their full potential in making music, while also having a place to belong, to be supported, and to be recognized. And let's not forget that, at the same time, students are developing skills that orchestrate success through communication, collaboration, and thinking critically and creatively—skills that are highly valued and necessary to succeed in society today.

The **LMEA Annual Conference** will take place **November 21-25**, at the Crowne Plaza Hotel and Convention Center in Baton Rouge. Over 500 Louisiana high school students, selected through two sets of auditions, will have the opportunity to participate in All-State Performing Ensembles at the Conference. As many of you know, that's an experience that will not be forgotten! I still recall my experiences as a high school student, singing in All-State Choir, playing in All-State Band, and working with outstanding conductors. I have my music teachers to thank for these experiences, and it's the work you do as teachers that makes these opportunities possible for your students.

The Conference provides many opportunities for teachers as well. We have the opportunity to observe fine conductors in rehearsal with our students, and to learn new ideas and techniques to implement in our own rehearsals. The LMEA Conference also sponsors clinic sessions that address teaching tips and strategies that make us more effective as teachers at all levels, from Kindergarten through college.

Christine Fisher, President of the Southern Division of the National Association for Music Education, will be visiting our LMEA Conference this year, and will be providing a session on Saturday afternoon following the General Membership meeting at 1:00. I encourage you to attend the membership meeting, as it will be a time to learn what is taking place with LMEA, including teacher evaluation and upcoming LMEA elections. It will also be a time to ask questions or bring up ideas that you may have.

The National Association for Music Education provides opportunities for teachers and students at a national level. Several students from Louisiana were selected to participate in the All-National Honors Ensembles at the NAFME In-service Conference recently held in Nashville, Tennessee. This conference offered many professional development opportunities for teachers on topics such as teacher evaluation, student assessment, core arts standards, conducting tips, teaching guitar, and music advocacy. Participating in events such as these helps to re-charge our batteries and give us incentive to return to our classes as more enthusiastic and informed teachers.

Perhaps you are looking for an opportunity to make a difference in music education, not only in your own school, but on a broader level. Do you have a vision for ways to enhance music education in your community, your district, or in the state? Or do you have a desire to bring to fruition an idea that's been percolating in the back of your mind? If so, make your wishes and ideas known . . . to other music teachers, to your administration, to your LMEA District Director or Division Chair, or to any LMEA Board member. New ideas are always welcome; sometimes it just takes a courageous individual to coax us out of complacency or to inspire us into action. There is always work to be done in LMEA, and the more minds and hands we have to assist, the more effective we can be!

You make opportunities every day for your students. Be sure to take advantage of opportunities for yourself as you grow as a leader in your profession. You might even like to get involved on the state level. Serving on the LMEA Board of Directors is one way of connecting with fellow teachers and music programs statewide. Elections for Division Chairs will be held in February. This may be your opportunity to nominate an energetic and dedicated LMEA member who would be effective in serving on the LMEA Board, or perhaps you would like to serve in this capacity. These positions require a great deal of time and energy, so do keep that in mind. Nominations for these positions are due to Scotty Walker, the Elections Chair, by December 31. Check the LMEA website (lmeamusic.org) for his contact information.

Election ballots will be sent to the LMEA membership by mail in February, so be sure that your mailing information is up to date. You can make changes to your membership information at any time by clicking the "join" (NAFME) button on the LMEA website.

Also, the February 2014 issue of the *Louisiana Musician* will be ONLINE ONLY, so you will need to check the LMEA website to read that issue. Keep connected to this publication and to NAFME publications—*Music Educators Journal* and *Teaching Music*—to access news and articles relating to music education today. The websites of these partner associations—LMEA (lmeamusic.org) and NAFME (nafme.org)—will provide you with excellent tools and resources for teaching music, and with continued opportunities in your professional development.

See you at conference!



From the Editor's Desk

Pat Deaville

is Director of Curriculum and Instruction
Calcasieu Parish Schools



Education for the 21st century. During a recent committee meeting with leaders in business and industry, I kept hearing them bounce the phrase “education for the 21st century” back and forth like a tennis ball.

Kept quite for a little while. Then they realized I was the “educator” in the room. I gave them a quizzical look and asked them the question. “What are you talking about?”

Each took their turn in politely telling me how we needed to upgrade our education system so that we could prepare kids for 21st century instead of the 20th century.

My response this time was that “You don’t know what you are talking about. You are just parroting what you hear at the country club.”

The room got rather chilly at that point. Each of these people makes more money every month than I make all year. I wasn’t trying to anger them. Just wanted to get their attention. Succeeded at that.

They were ready to let me talk. They were skeptical but ready.

Here is my story: I have been in education for over 40 years. Countless times my students have told me that I did a great job in preparing them for success in work, in life, and as citizens.

I’ve got a “who’s who” of former students from the first 20 years of my career with great success stories and great credentials. Here is a list of words that I NEVER used in any of my rehearsals during those first 20 years: computer, internet, cell phone, Facebook, twitter, Bill Gates, Microsoft, iPod, iPad or iPhone.

Yet my students were successful in the computer age without any knowledge imparted by me pertaining to the computer age...mostly because neither I nor my colleagues had any clear understanding what the world would be like decades later as a result of technology..

But to our credit, my colleagues and I were focused on what these students needed for success for life. We used words like: character, challenge, competition, discipline, innovation, teamwork, responsibility, excellence, and tradition. These words were woven into all that we taught and all that we modeled.

It is these words that mattered then. It is these words that matter today. Yes, we do focus more on technology and global learning in today’s schools.

But also I reminded them that as employers they constantly stress to educators they want employees that are highly motivated. They want employees that show up for work every day with a good attitude, a strong sense of excellence and a willingness to work together. They want workers that are drug-free. They want workers that are loyal and disciplined.

In other words, 21st century employers want the same thing their 20th century counterparts wanted. Instead of using catch phrases like “education for the 21st century,” you need to revisit the words that really matter most. Hold us accountable for that. Hold yourselves accountable for that. Hold your communities accountable for that.

Our students will adapt to whatever the world becomes if we focus on the most important things. No one really knows what the world will be in 2030. But that is not as important as knowing that people will continue to make the difference in our world. Our job is to lead our students towards becoming life-long learners with strong character and commitment to excellence.

President-Elect

Sharon McNamara-Home



Academic All-State. The Academic All-State Award is a tremendous accomplishment and a special honor for our deserving young musicians. Teachers, please help facilitate this process by making sure students acquire the necessary school signature and meet the deadline for submitting the form.

Membership. In an effort to improve communication with our members, we are in the process of checking the accuracy of our members’ current school information and LMEA district. One way you can help us with this project is by updating information at NAFME. Please take an extra moment to correct out-of-date information or add missing information when you renew your membership this year.

What has NAFME done for me recently? Here are two important focuses:

- **NAFME continues working to insure that music classes are taught by certified music educators (K-12).** NAFME has played an integral role in working with SEADAE (State Education Agency Directors of Arts Education) in the writing of: *Roles of Certified Arts Educators, Certified Non-Arts Educators, & Providers of Supplemental Arts Instruction*. One of the document’s primary recommendations revolves around the importance of ensuring “that all students in public schools have access to sequential, standards-based arts instruction taught by certified arts educators.” The forward, written by Rachel Goslins, Executive Director of The President’s Committee on the Arts and the Humanities, strengthens this position stating, “...the cornerstones in a truly integrated and effective arts education program are the certified arts educators in each school.” NAFME continues to spend time and resources lobbying Congress on the need for certified music teachers. (A link to this document can be found at both www.NAFME.org and www.seadae.org.)
- **NAFME is developing a resource for interpreting the Compass Evaluation Rubric in “music terms.”** The *Workbook for Building and Evaluating Effective Music Education*, to be released at the National Conference in October, was designed as a tool to be used by both teachers and administrators in the evaluation of music teachers. It contains rubrics designed to help administrators understand how to relate the music curriculum to the state rubrics, including the Danielson Model used in Louisiana. It has been developed by the NAFME Teacher Evaluation Task Force which is made up of teachers, principals, collegiate faculty, district administrators, and SEADAE members. It will be available online through NAFME in the near future.

I hope to see you all at the Fall LMEA Conference. As always if I can be of service to you, please email me – sharon.mcnamara-home@stpsb.org.

Band Division Chairman

Jay Ecker

I would like to offer my sincere thanks on behalf of LMEA to everyone who volunteered to help make 2nd Round All-State Auditions a huge success. I hope that all of our students had a positive audition experience. If you have any comments or suggestions on the audition process, please don't hesitate to let me know. Special thanks to Scotty Walker and his staff and the Lafayette High School Administration, and to all those who helped host and run the auditions. Also, let me thank Carolyn Herrington and Phi Beta Mu for providing monitors, Jay Jacobs for securing judges and all of the directors who volunteered your time.

I hope everyone will make plans to attend LMEA convention this year and attend the outstanding All-State Band concerts. I encourage each of you to sit in on some of the rehearsals and learn from our outstanding clinicians. Special thanks to Daphne Richardson, Concert Band Chair, and Richard Bresowar, Symphonic Band Chair. The clinicians and their programs are:

Concert Band – Conducted by Dennis Hopkins

Dennis Hopkins successfully taught at the high school and university level for 40 years. He received a BME Degree from Baylor University, MA Degree from West Texas A&M University, and Doctor of Arts (ABD) from Northern Colorado University. His teaching career included Director of Bands at Rosebud-Lott, Richfield, Memorial and Leander High Schools; McNeese State University, MH Baylor University and the University of Wyoming. His high schools achieved such honors at the TMEA Honor Band of Texas and his marching band won the Marching Bands of America Southern Regional Championship. He achieved consecutive UIL Sweepstakes awards at each of his high schools and was a finalist at the State Marching Band Contest each year. He finished his career as Director of Fine Arts for Austin ISD where he was over the band, orchestra, choir, elementary music, and theatre and dance departments in 100 schools with a total of 485 teachers under his supervision. He currently judges and clinics throughout Texas and surrounding states.

Concert Band Repertoire:

Persis by Hosay

Jupiter from The Planets by Holst, arranged by Owens

Epinicun by Paulson

March from 1941 by John Williams

When The Stars Began To Fall by Fred Allen

Symphonic Band – conducted by Col. Larry Lang



Colonel Larry H. Lang is commander and conductor of The United States Air Force Band. This premier musical unit inspires patriotism and military service in fellow citizens, honors those who serve, and represents the U.S. Air Force and United States of America to millions worldwide. Colonel Lang is responsible for all activities of this 184-member squadron including equipping, training, and deploying Airmen musicians to perform nearly 1,600 missions each year.

Born in El Paso, Texas, Colonel Lang began his musical career as a trombonist. He attended New Mexico State University in Las Cruces where he earned bachelor's degrees in music education and music performance in 1980. He went on to complete a master's degree in music education at the University of New Hampshire in Durham and was appointed to the faculty there in 1982. He also served for seven years as assistant director of bands at McNeese State University in Lake Charles, La.

Colonel Lang received his commission through Officer Training School in San Antonio, Texas in April 1990. His previous commands include the Air Force Band of the Pacific in Alaska, and the Air Force Heritage of America Band in Virginia. Under his leadership, the Heritage of America Band received four Air Force Organizational Excellence awards. After attending Air Command and Staff College in Alabama, Colonel Lang also served as the commander of the Air Force Band of Liberty in Massachusetts and the Air Force Academy Band in Colorado. He was selected to command The U.S. Air Force Band in March 2012.

In 2005, Colonel Lang was inducted into the prestigious American Bandmasters Association. He is also a member of numerous musical associations and is active as a guest conductor and clinician throughout the United States and abroad.

Symphonic Band Repertoire:

Ricochet by Sean O'Loughlin

Aces of the Air by Karl King

Firefly by Ryan George

Elegy for a Young American by Ronald Lo Presti

The Speed of Heat by Julie Giroux

Jazz Division Chairman

Lee Hicks

It's that time of year again; the LMEA Annual Conference is coming soon. Our conference provides music educators in Louisiana a valuable means for musical, professional, and personal development. This is a great time to share information and time with our colleagues, to exchange ideas about the successes in our programs, and to meet other directors you may not have met before. We will be able to grow and to improve as a well-rounded educator.

As you will see at the conference, the LMEA Jazz Division along with LAJE (Louisiana Association for Jazz Education) will be offering some outstanding clinics. Even if you do not have a jazz program please consider attending the jazz division clinics. You might find something that you can take back to your students that could improve your program and make your students better musicians. This year the jazz division is offering three excellent clinics with nationally and internationally known clinicians.

Our 2013 LMEA All State Jazz Ensemble conductor is Professor James Ketch from the University of North Carolina at Chapel Hill. I first met Jim Ketch at the Swing Central National Jazz Ensemble Competition in Savannah, Georgia. I was there with our Fontainebleau Jazz Ensemble One taking part in the competition and festival. THE best experience of that trip was the hour we got to spend with some of the festival clinicians. In the clinic were some incredible musicians and teachers including Marcus Roberts, Roland Guerin, and Jason Marsalis (known as the Marcus Roberts Trio), Thomas Walsh from Indiana Universities Jacob's School of Music, and Jim Ketch. While the experience of having all of those incredible musicians working with my band for one hour was absolutely incredible, the most impressive aspect of that experience was Jim's enthusiastic approach and his ability to effectively communicate to our students. After returning from that trip I emailed him to let him know how much I appreciated his energy and I thanked him for his great work with our group. We struck up a great conversation and not long after he brought his UNC Jazz Ensemble to New Orleans to performed at our school, and several places in New Orleans, and to assist in recovery efforts



Continued on next page

Continued on from page 5

from Hurricane Katrina. Through those experiences I learned that Professor Ketch was more than a great jazz musician and teacher, he was a great person who genuinely cares for others and his students. I am very excited to have him with us this year for our All State Jazz Ensemble and look forward to watching him work with our outstanding students from Louisiana. If you have some free time at the conference I would highly recommend spending some time watching Jim work. He might inspire you as much as he has inspired me to improve my teaching.

Professor Ketch enjoys an active career as trumpet performer, conductor, educator, and Summit Recording Artist. His 2009 release *Next Set* and 2012 release *A Distant View* were well received by the national jazz community gaining favorable reviews in *JazzReview.com* and *AllMusicGuide.com* and *Jazz Times*. *Next Set* was chosen by Detroit's Jazz Station WDET as a "Destination Jazz 2009 Highly Recommended New CD." His recording of Tom Harrell's *Sail Away (from A Distant View)* was 11th on WRTI, Public Radio for Philadelphia's Top 100 Jazz Tunes of 2012.

Mr. Ketch is also a Bach trumpet clinician, Professor of Music and Director of Jazz Studies at the University of North Carolina at Chapel Hill, Associate Director of Swing Central for the Savannah Music Festival, Music Director of the North Carolina Jazz Repertory Orchestra, and a faculty member of the famed Jamey Aebersold Summer Jazz Workshop. Recent appearances have included performances in Washington D.C. (Blues Alley and the Bohemian Gardens) with Lee Konitz and Joel Frahm, at the Savannah Music Festival with the Marcus Roberts Trio, Ted Nash, Wycliffe Gordon, and Marcus Printup, and at UNC-Chapel Hill with Branford Marsalis, John Pizzarelli, and Rene Marie.

As a conductor, Professor Ketch has taken his UNC Jazz Band to festivals in France, Switzerland, and the Netherlands and to festivals in New Orleans, LA. In conjunction with Jazz at Lincoln Center, Ketch has hosted 9 regional *Essentially Ellington High School Jazz Festivals at UNC*. He has also conducted All-State Jazz Bands in North and South Carolina, Nebraska, New Hampshire, and Louisiana, and he has led Regional Jazz Bands in North Carolina, the District of Columbia, Virginia, and Tennessee.

Mr. Ketch is currently writing *Jazz Essentials for Trumpet* that he hopes to publish in 2014. He is also at work on a book that focuses on Ensemble Improvising on the Blues with the members of the Marcus Roberts Trio. Ketch has been awarded three distinguished teaching awards while serving as a Professor of Music at the University of North Carolina at Chapel Hill.

Collegiate MENC Chairman Ed McClellan

As we move into the 2013-2014 academic year, the Collegiate Division has planned a variety of events and activities! Louisiana Collegiate NAFME has a member page on Facebook. I urge music education students and NAFME Collegiate Advisors to "friend" this facebook page to stay current with the state organization. The address is:

<http://www.facebook.com/pages/NAFME-Collegiate-Louisiana>

**Louisiana Statewide Collegiate NAFME Summit
Sunday, November 24 – Monday, November 25**

Due to the success of the 2012 Collegiate Summit and interest expressed by its participants, the 2013 Collegiate Summit schedule includes more opportunities to network with collegiate peers from across the state and additional sessions of interest to college students and all LMEA members.

2013 sessions will include:

- Interactive Band and Choral Class Teaching Demonstrations
- Presentations and Panel Discussions on Issues of Teaching and Teacher Professionalism
- Networking Sessions for Collegiate MENC Members and New Music Teachers
- Professional Development Sessions Relevant to Teaching Music

**Dr. Lorie Enloe, Associate Professor of Music Education, University of Idaho
Sunday, November 24th**

Dr. Enloe, professional clarinetist with the Washington Symphony Orchestra, will make a special presentation on beginning woodwind players in the school program. Dr. Enloe will also be a special guest at the LMEA Music Teacher Education Luncheon.

**Special Session on Beginning a Job Search
Monday, November 25th**

The East Baton Rouge Parish Human Resource Office will present a session on activating your job search. The presentation will include what schools are looking for in a potential candidate as music teacher, updating your resume, and interview techniques for landing a new teaching position.

While this event is especially designed for the following individuals, veteran music teachers and practitioners will also find many of sessions informative.

- Collegiate MENC Chapter Leaders and Members
- Collegiate MENC College Advisors
- Music Teachers with 0-5 years of teaching experience

Pre-Registration Rates

Collegiate Music Education Summit Participants should take advantage of "early" conference pre-registration rates in planning to take part in this event. LMEA Conference "Pre-registration" for Collegiate Members is \$15; Pre-registration forms are available on the LMEA website (<http://www.lmeamusic.org/convention.html>).



Please also mark your calendar to participate in the following events during the 2012 LMEA Statewide Conference.

**Fourth Annual Music Teacher Education Luncheon
Sunday, November 24
12:00 p.m. Noon**

Music Education Faculty at colleges and universities across the state are invited to attend this informal luncheon banquet and meeting as part of the LMEA Conference. This social gathering of Music Teacher Educators is an opportunity to connect with other professionals, develop collegiality, exchange ideas, share in common practices, and examine ways to enhance music teacher training programs in Louisiana.

**Research Presentation Session
Sunday, November 24
4:00 p.m.**

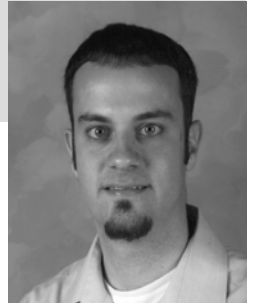
The Louisiana Music Educators Association is pleased to announce a call for research reports for presentation at a Research Poster Session at the LMEA Conference on November 24, 2013. University faculty, graduate students, and classroom music educators are invited to submit proposals for presentation during this session. Authors whose reports are selected will present their research during a research poster session in which interested music educators can learn about the research and discuss applications to music teaching and learning with the authors.

In Closing

Your involvement and support for the professional development of undergraduate music education majors, beginning and veteran music teachers does make a difference in future excellence in music education throughout Louisiana. Please contact me should I be of help or assistance to you.

Ed McClellan
Loyola University New Orleans
Phone: 504-865-2085
Email: emcclell@loyno.edu

LAJE President Andy Pizzo



It's midway through the 1st semester and here we are making our push toward the holidays. With the LMEA Conference upon us, there's lots of jazz going on and **LAJE** is on the move. Please refer to our website at www.lajemusic.com for updated membership info. This is our website and I want to personally thank **Mr. Jay Ecker** for taking the time to update it. We feel it has become more interactive and informative with lots of useful information for your viewing. Everything you need to know about LAJE dues, membership benefits, jazz festivals in LA, the LMEA All State Jazz Band, etc., is on the website. Always feel free to contact any of the board members for we are here to help you as best as we can.

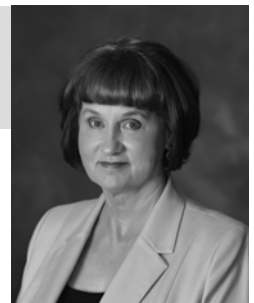
I want to thank several people who helped make the All State Jazz Band auditions such a success. Our judges were **Rick Condit** (all saxes), **James Miller** (trombones), **Patrick Bordelon and J.R. Miller** (rhythm section) as well as our other judges. I want to thank **BJ McGibney** and those who assisted at the registration table. I just want to say thanks to all who made this process run smoothly.

There will be opportunities to catch some fantastic jazz events at the conference. Besides the three outstanding jazz clinics at LMEA, the **University of Louisiana at Monroe**, will perform on Saturday, November 23, from 12p.m. – 12:45p.m. On Sunday, November 24, another inductee will enter the Louisiana Association for Jazz Education Hall of Fame. Our inductee for 2013 will be New Orleans jazz vocalist, **Ms. Leah Chase**. You can read up on her in the biography section of the magazine. Her bio is truly amazing. The ceremony will take place at 3:45p.m. Following the induction, the **All State Jazz Ensemble** will perform from 3:55p.m. – 4:40p.m. Following this concert will be the **LAJE Reading Big Band** from 5p.m. – 6:15p.m. Some of the best jazz educators and performers in the state will be performing in this band and they will be debuting new jazz literature as well as classic standards and selections that you will want to purchase for your jazz library. This is a concert you DON'T want to miss and will have you dancing in your seat.

I want to remind everyone of the **LMEA Jazz Division/LAJE Business meeting** at the conference. This meeting will take place on **Sunday, November 24 from 6:45p.m. – 7:30p.m.**, following the LAJE Reading Big Band performance. Refer to the conference schedule for the room location for this meeting as well as the three outstanding jazz clinics that will be held on Saturday and Sunday. Also, don't forget to check out www.lajemusic.com for info on the jazz festivals that will be taking place around Louisiana. All of the dates, locations, and registration forms are on the website. You can also look for info on LAJE membership in the exhibit hall. As usual, our LAJE "social" with a "special jazz performance" by members of LAJE on Saturday, November 23 from 9p.m. – 11:00p.m., will take place outside of the restaurant. We hope you drop by to check out what's swingin' with LAJE. We'll have our membership drive going and this is a great time to get involved!

In closing, I want to thank everyone for their support during my time as President of the Louisiana Association for Jazz Education. It has been an honor and a great experience and I've met some great educators from Louisiana and beyond. I'll always be here to help, so feel free to reach out to me through LAJE. I'll be moving into the Past President position while turning over the reigns to Mr. Patrick Sheng, Director of Jazz Studies and Associate Professor of Saxophone at McNeese State University. He helps run the Banners Jazz Festival in Lake Charles and LAJE will be teaming up with this event this year on Sat. May 3, 2014 to make it the most successful jazz festival that it has had yet to date. Let's keep LAJE alive and help it to reach new and exciting heights in the realm of jazz education for Louisiana.

Vocal Division Chairman Fran Hebert



"Thank you" to District 3 band and choir directors for hosting our All-State second round auditions at Lafayette High. Thanks especially to our host personnel Scotty Walker, Ronnie Gleason, Holly Grefe, and Will Green.

"Congratulations" to directors and participants in All-State choirs. We begin activities on Thursday, November 21 with our guest director rehearsals for Women's Chorale at 12:30p.m., Mixed Choir at 5:55p.m. Every rehearsal and activity is required for every member of an all-state group. Participants in both groups have received the schedule of times and locations for their respective rehearsals and performance. This schedule is located on our website: lmeamusic.org. No choir member will be allowed to participate without 'on-site' adult supervision by a registered chaperone.

Dr. Betsy Cook Weber, University of Houston, will serve as clinician for the Women's Chorale. Dr. Charles Bruffy, Kansas City Chorale, will serve as clinician for the Mixed All-State Choir.

Dr. Patti DeWitt, publisher of "Music Literacy for Singers", will present two conference workshops entitled "Getting Excited About Sight Reading" and "The Amazing Power of Audiation in the Choral Rehearsal".

Our official vocal division business meeting is scheduled for Saturday morning, 8:15a.m. in the Mississippi Queen/Delta Queen room. Please email in advance to submit agenda items: fwhebert@gmail.com.

LMEA 2014 State Choir Festival and State Solo Festival will take place at the University of Louisiana at Lafayette. Dates: State Choir - week of April 28; State Solo - Saturday, May 3.

Best wishes for wonderful fall and seasonal concerts. I look forward to seeing each of you at the convention.



Orchestra Division Chairman Joseph LeBlanc



Our 2013 All-State Orchestra Conductor comes to us from the University of Michigan. Anthony Elliott is in great demand as a conductor, and as a concert cellist. Known for his fluid technique and assured interpretations, he has led numerous professional, amateur, and youth orchestras in prestigious settings around the world. Presently he is Music Director of the Dexter Community Orchestra, and Conductor of the Michigan Youth Symphony at the University of Michigan. He has shared podium duties at the Texas Music Festival with Maxim Shostakovich and Christoph Eschenbach, and at the Blossom Music Festival with Leonard Slatkin and Jahja Ling.

Upcoming performances include reengagements with the Sphinx Symphony at Orchestra Hall in Detroit, the Prince George's Philharmonic in Washington DC, and the Icicle Creek Chamber Orchestra. On two separate occasions he has led the Sphinx Chamber Orchestra at Carnegie Hall to great critical acclaim. Guest conducting engagements have also included the San Antonio Symphony, the Kitchener-Waterloo Symphony, the Scott Joplin Chamber Orchestra, and the Vancouver Chamber Players.

His conducting repertoire includes most of the orchestral classics, as well as newer works by African American composers Michael Abels, James Lee, and Coleridge Taylor Perkinson, American composers Joan Tower and Michael Daugherty, and Canadian composers Robert Turner and Jeffrey Ryan. Opera performances have included Mozart's *Così fan tutte*, Menotti's *the Consul*, and Menotti's *Amahl and the Night Visitors*. Choral collaborations have included such works as Britten's *Saint Nicholas Cantata*, the *Hodie* of Vaughn Williams, the *Poulenc Gloria*,

and the *Vivaldi Gloria*.

As a tireless advocate for music education, he has led the All Northwest Orchestra as well as the All State Orchestras of New York, Texas, Florida, Washington, North Carolina, Alaska, Vermont, Maryland, Alabama, and North Dakota. As Music Director of the Houston Youth Symphony and Ballet, he led a heralded two week concert tour to Holland, Germany, and Austria, and was honored by Houston Mayor Kathryn Whitmire and the Houston City Council. He has given countless free clinics and workshops at inner city schools and community centers around the country. This past season he appeared in Detroit with students from the Cornerstone School, the Detroit School for the Arts, and the Marvin L. Winan's Fine Arts Academy.

Anthony Elliott is also a prize winning cellist, being the first person to win the Feuermann International Cello Competition. He has appeared as a soloist with the New York Philharmonic, the Detroit Symphony, the Minnesota Orchestra, the Vancouver Symphony, and the orchestra of CBC Toronto.

Maestro Elliott has selected a most exciting program for this year's All State Orchestra. This year's program includes the following:

<i>Festive Overture, Op. 96</i>	Dmitri Shostakovich
<i>English Dances Set 1, for orchestra, Op. 27</i>	Malcolm Arnold
<i>English Dances Set 2, for orchestra, Op. 33</i>	Malcolm Arnold
<i>The Three Cornered Hat, Suite No. 2</i>	Manuel de Falla

It is my sincere hope, to have the opportunity to see and speak with each String teacher during our LMEA Conference in Baton Rouge this November.

J. LeBlanc

Elementary Division Chairman Michele White



As I write this article we are a little more than six weeks away from our annual state conference. It is so exciting to see last year's plans become this year's realities – and it is mind-boggling to watch all LMEA board members bring their piece of the puzzle to the table; I marvel each fall as the completed picture emerges.

In the last issue I highlighted the clinician, Brent Holl, sponsored by the local Red Stick chapter, and on Dancing Drum, Dr. Sarah Bartolome, and two sessions being presented by local members of the Red Stick and LAKE chapters on the student learning targets, assessments, and lesson plans required by the new state mandates. This article will focus on our main attraction Dr. Susan Brumfield, and on Ruth Dwyer, who is sponsored by the Louisiana Kodály Educators (LAKE).

I am thrilled with our planned elementary/middle school offerings. Ruth Dwyer, director of education and associate director of the Indianapolis Children's Choirs will be presenting three sessions, two of which will include packets provided by J. W. Pepper and Sons. It has been at least ten years since Ruth has been here, and I can't wait to learn new techniques for directing choirs from this master teacher.

Mrs. Dwyer's clinics will be: **1. Harmony in Sequence Session #1: Essential Elements: Grades 4-9 – Vocal Development in the Choral Setting – First, the Ear; Then, the Eye.** The session will focus on vocal techniques and warm-ups for developing tone, part-singing, and balance.

2. Harmony in Sequence Session #2: Sight-Reading Made Easy: Grades 4-9 — General music classroom and choral activities for developing part singing and sight-reading skills.

3. Harmony in Sequence Session #3: Reading Session: Grades 4-9—Choral octavos for developing sight-reading and part-singing skills.

Please do your best to be in attendance at the conference to take advantage of sessions that have been designed to meet your needs based on last year's evaluations.

Dr. Susan Brumfield will be with us again this November to continue her illuminating sessions using her recently published books. We decided that she had just touched the surface at the 2012 conference, so she is back to give us many more new ideas for working with our students. She is scheduled to begin her clinics on Thursday night with a choral reading session: **Tried, True and New Songs, Too!** The packet for this session will be provided by J. W. Pepper as well.

On Friday and Saturday she will present three more sessions: **1. First, We Sing: Songs and Games for the Music Classroom; 2. Practical Pedagogy (Part 1): Activities for Practicing Musical Skills; 3. Practical Pedagogy (Part 2): MORE Activities for Practicing Musical Skills.** Susan's sessions are always so much fun! Please make sure you are with us to share the joy. See you in Baton Rouge!

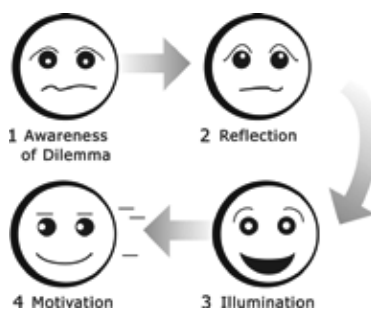
President Red Stick Chapter AOSA Sherry Barron, NBCT



Finding ways of assessing students can sometimes be tricky for teachers of the arts. It often takes much creativity and thinking outside of the box. In my class, students assess their work after every task; I am coaching their brain to think and follow a process. This form of informal assessment helps prepare students for formal assessments in the classroom and assessing tasks and personal behaviors in everyday life. I have taught them the importance of three little words: **performance, reflection, evaluate.**

The definition of performance is *the action or process of carrying out or accomplishing an action, task, or function*. Webster defines it as the execution of an action. If we can get our students to believe and understand that everything we do is a type of *performance*, we might see better results in schoolwork, stage performances, and personal behaviors.

Performance calls us to action! Curiosity and satisfaction calls us to automatically reflect and ask the question, "How well did I do?" This question calls us to reflect. Upon reflecting, illumination (evaluation) is discovered which then motivates to another action. To my surprise, I discovered an interesting article, while writing this one, which provided the illustration below. It helps verify my thoughts about the power of performance and furnishes a tool for your students to see and better understand.



In my elementary music class, I have three faces (sad/red, straight/yellow, happy/green) for them to choose to assess their performance. Using the colors of a traffic light helps correlate with everyday life.

As a class, we have also discussed and created a rubric to assist in evaluating their performance. They are learning the importance of setting and creating a standard, reflecting, and evaluating what they do. It also helps to motivate them to do better. When they have mastered a task, I intend to add yet another face, one of surprise/orange! It will give them another level to attain, which is often surprising for them!

Assessing students is important, but re-directing and coaching their way of thinking is much more valuable for self-assessment. This is not a new idea; however, sometimes educators need to be reminded that it is not only the arts that we teach but also the art of achievement! The power of performance and the action to which it calls is powerful to the lives of all who coach their brain to better self-evaluate their performances, stage or not!

"After recognizing that critiques (of self and others) tended to be superficial and lacking in actionable feedback, I found it helpful to collaborate with the children on defining what makes the difference between a mediocre performance and a great one. They brainstormed not only around issues of technique and expression, but also performance etiquette and stage presence. Having this group dialogue and posting the ideas presented pushed the children to go deeper in their reflections and to offer more constructive feedback."

- K. Martinez, Musicollaboative & Red Stick Board Member

Rock, David. "A Brain-Based Approach to Coaching." *International Journal of Coaching in Organizations* 2006, 4(2), 32-43. (Accessed October 5, 2013) <http://www.workplacecoaching.com/pdf/CoachingTheBrainIJCO.pdf>.



Fran Hebert

Louisiana Music Educators Association 2013 Hall of Fame Inductee



For forty years, Fran Hebert has been a dedicated vocal music educator. In addition to teaching and conducting choral groups at all grade levels, she has been active in such areas as teacher education, curriculum development, professional development and participating in several professional organizations.

Presently, she serves as assistant choir director at Lafayette High School. Her career in music education began at Plantation Elementary and Milton Elementary where she taught classroom music K-6 and choirs 6-8. The majority of her career has been in the public schools of Lafayette Parish. At the high school level, she has taught choirs, fine arts survey, and musical productions. In the elementary schools, she has taught fifth grade choirs and classroom music K-1. In addition to the Lafayette Parish schools, she taught at St. Martinville Junior High in the areas of general music 7-8 and choirs 8-9 and self-contained special education.

At the university level, her career includes UL-Lafayette as staff piano instructor and accompanist and adjunct instructor in vocal music education and choral conducting. For three years, she taught vocal music education and music technology at Nicholls State University.

Fran has been a very active member of the Louisiana Music Educators Association Board of Directors, serving for eleven years as District Director and from 2001 to the present as State Vocal Chairman. In this capacity, she has worked diligently to provide quality learning experiences for vocal music teachers and quality musical experiences for the students in the All-State Choral Ensembles at the annual LMEA Convention.

During her tenure as State Vocal Chairman, she has led the expansion of the All-State Choir from one to two ensembles.

Fran has served most of the LMEA districts as adjudicator and/or honor choir clinician and in MEA's in other states. She is presently leading the development of a policy and procedures manual for adjudicator training.

Throughout her career as Director of Choirs, Acadiana High School Ensembles received consistent sweepstakes ratings in LMEA district and state choir festivals, Bayouland Regional choir festival and numerous national choir festivals at New Orleans, Honolulu, HI, San Antonio and Galveston, TX, Panama City and Orlando, FL Nassau, Bahamas, Nashville and Gatlinburg, TN, Washington, DC, New York City, Branson, MO and Chicago, IL. As elementary and middle school choir director, her groups received superior ratings at LMEA District III and State Festival.

In 1982, Fran was recognized as Lafayette Parish "Teacher of the Year, Lafayette Jaycees "Outstanding Young Educator", and Finalist (Top Four) for "Louisiana State Teacher of the Year."

Leah Chase-Kamata

Louisiana Association of Jazz Educators 2013 Hall of Fame Inductee



Leah Chase-Kamata has been selected for induction to the Louisiana Association of Jazz Educators Hall of Fame in 2013. The award ceremony takes place preceding the LMEA All-State Jazz Ensemble performance at the annual LMEA State Music Conference. The public is invited to attend along with friends and families of the administrator.

The daughter of trumpeter and bandleader Dookie Chase and restaurateur and namesake Leah Chase, vocalist Leah Chase grew up surrounded by music and undoubtedly good food. She cites her father's love of jazz and her mother's penchant for vocalists like Johnny Mathis as influencing her musical preferences – jazz and ballads. As a child, she became aware of her vocal abilities after winning praise for a performance and thereafter she was often called on to sing at various events.

Chase joined the high school choir at Xavier Prep and studied voice and piano at Xavier University Junior School of Music. Singing in the New Orleans Recreation Department Theater's production of *Hallelujah Baby* offered her further experience. She considers her first "professional" gigs as singing pop hits with a group called Market and also portraying a "woman of the blues" in a Las Vegas-type show.

While Chase was majoring in classical voice at Loyola University, where she earned a degree in vocal performance, she also participated in the jazz band. The mezzo-soprano went on to study classically at the Julliard School of Music but after a year, she says she realized that the style "wasn't where I think I live." It was the late 1970s when Chase came back home and got a job at the Chateau Sonesta, where she spent a year doing what she describes as a cabaret show. When her pianist, Craig Fisher, decided to head to California she went, too. During her 12 years on the West Coast she had the opportunity to sing more jazz. "I'm most comfortable with jazz," she says. "I like the freedom you have to create." After the sudden death of her sister in '90, Chase returned to New Orleans to help out at her mother's restaurant, Dookie Chase, "It was time to come back – it was good to have my daughter around family." She got back into singing again when Dolores Marsalis, the wife of pianist Ellis Marsalis, asked if she would perform at a program for St. Mary's High School. Afterward, Dolores said, "You really ought to be doing this." She has been back on the scene ever since, leading groups filled with New Orleans' finest. Chase is also an adjunct professor at Loyola and Tulane universities and the University of New Orleans, as well as being involved with Delfeayo Marsalis' children's theatre program.

Leah is a staple of the New Orleans music fabric, performing with such luminaries as Michael Peller, Philip Manuel, Harry Shearer, Jesse Boyd, Larry Sieberth, Matt Lemmler, and Ed Petersen. She can be heard at the Windsor Court Hotel, Sweet Lorraine's, Snug Harbor, and notable festivals such as the French Quarter Fest and the Jazz and Heritage Festival.

After Hurricane Katrina and the federal levee failures, she, along with pianists David Torkanowski and Tom McDermott and clarinetist Evan Christopher were invited by the French Ministry of Culture to perform in Paris and throughout France.

Her sense of humor blends with her inimitable stagecraft and vocal skills, rendering her one of jazz's most sought-after vocalists.

LMEA Outstanding Administrator Award 2013

Karen Cunningham

One Louisiana Principal and one District Assistant Superintendent have been selected as recipients of the LMEA Outstanding Administrator Award for 2013. This is the thirteenth time in the past sixteen years that such recognition has been made by the Louisiana Music Educators Association.

LMEA annually accepts nominations based on the criteria published in the February Issue of *The Louisiana Musician*. The award ceremony takes place preceding an All-State performance at the annual State Music Conference. The public is invited to attend along with friends and families of the administrator.

Karen Cunningham is the Assistant Superintendent of Beauregard Parish Schools. She holds a Bachelor of Arts, Master of Education/English, and Master's Degree Plus 30 Graduate Hours from McNeese State University and a Valid for Life for Continuous Service teaching certificate from the state of Louisiana.

She has served her entire career in Louisiana schools, teaching her first semester in Calcasieu Parish and all subsequent years in Beauregard, first as a secondary English teacher and supervisor of student teachers, then coordinator of writing programs, and assistant principal of DeRidder High School. She became supervisor of instruction for the district in 1999, assuming responsibilities in several areas including K-12 Fine Arts, supervising Beauregard Parish bands and vocal music programs for eight years. She also served the district as Director of Curriculum and is presently the Beauregard Parish Assistant Superintendent.

She enjoys past and present membership in numerous professional organizations including the Louisiana Association of School Executives (LASE), Phi Delta Kappa (National Honor Education Fraternity), and Delta Kappa Gamma International, Epsilon State, Sigma Chapter (past president). She has also served on the Beauregard Arts and Humanities Council and as a member of the Arts Council of Southwest Louisiana.

As K-12 Fine Arts Supervisor, she orchestrated the initiation (and secured funding for the support) of the Beauregard Parish Choir Festival and Concert in 1999 which is celebrated annually as a vocal music tradition in the parish. She also initiated the Superintendent's Annual Art Contest in 2002. The Beauregard Parish Honor Bands program has been a unique aspect of the Beauregard Parish band program since its establishment in the 1980s. Ms. Cunningham has supported and attended Beauregard Honor Bands concerts since 1999 when she was appointed Fine Arts supervisor. Additionally, she is an advocate of district and state band and vocal music activities and enjoys attendance at both district and state concerts in support of the parish's music teachers and students.

Ms. Cunningham is a strong advocate of music and the arts in both schools and the community and actively supports expansion and funding of fine arts programs and activities in all Beauregard Parish schools. In the community, she has served as a musician through church affiliations as a member of choir, vocal ensembles, handbell choirs, and as an accompanist. She is an active member of the local theatre company, The Impromptu Players.

Beauregard Parish students enjoy the benefits of a comprehensive music instructional program with vocal music taught in all schools grades K-5 and band in five schools grades 6-12, supporting the goal of providing access to music education for all students K-12. The district upholds a strong music tradition, both philosophically and financially, valuing the importance of music and the arts as essential elements of education and student achievement. Karen Cunningham is a proponent of the philosophy that music education and participation in the arts are core elements of instruction for all students.



Keith Bonin

Keith Bonin represents the best in Louisiana principals. He possesses a visionary philosophy that places a high priority on student engagement in music and the arts. His philosophies have enabled his schools to achieve high academic standards while giving tremendous curriculum and financial support to the arts.

Keith Bonin is the current Principal of Sulphur High School in Sulphur, Louisiana. Prior to his appointment at Sulphur, Mr. Bonin served in a variety of teaching and administrative positions in Calcasieu Parish. While serving as principal at Sulphur High school, Mr. Bonin has twice been selected as Principal of the Year in Calcasieu Parish. He also served as Assistant Principal at DeQuincy High School and as Principal at Vinton High School.

In fulfilling his administrative roles, Mr. Bonin has been personally active in the development and expansion of school schedules in support of the arts. He has more than a vision of expanding music curriculum. He has developed long range plans and provided the necessary resources in staffing and funding to implement these plans. He has made excellence and public recognition of the arts a high priority. In his work, he has proven himself to be more than just an advocate. He gets results that directly benefit music and art education.

Under Mr. Bonin's supervision, the music programs have performed at district and state levels receiving Superior ratings. Also, students have been selected for the LMEA All-State groups in all categories.

One sample of Mr. Bonin's hands-on support can be found in his personal attendance at all music events and activities. This same level of commitment and leadership is exhibited throughout the school to all faculty and staff."

Key to his philosophy in raising academic standards is his belief that participation in the arts is fundamental to the process of improving student achievement. Both from his office and in the public eye, Mr. Bonin has elevated the success of music/art, been a visible and enthusiastic supporter of the students, and implemented a strong vision of music and art programs.



Congratulations!



Outstanding Young Music Educator Award 2013 Recipients

Five young music educators have been recognized for outstanding merit in music education. To qualify for this honor educators must have taught no more than 5 years and have served their students, communities and profession in an exemplary manner. The nominee must have enthusiasm for teaching, love for music, and a desire to further the musical education of his or her students. This year's recipients are:

Alex Hilliard, Band Director Kaplan High School - nominated by Scotty Walker, District III.

Megan Thren Luke, Band Director Sixth Ward Middle, BBE, CES, Thibodaux - nominated by Susie Folse, District VII.

Aaron Theall, Assistant Band Director DeRidder High School and DeRidder Junior High School - nominated by Carolyn Herrington, District V.

Paula Vickers, Elementary Music Teacher Mandeville Middle School - nominated by Sharon McNamera-Horne, District IX.

David Will, Band Director Westside Jr. High School, Walker - nominated by Rebecca Maus - District IV.

This is the third year for recognition of the young and very talented educators in the state of Louisiana. The "Outstanding Young Music Educator Award" will be presented to these recipients during the LMEA conference in November.

"Growing through Giving"

The Biggest Piano Event in the World

*All Spring -
- Enroll Early*

**Guild Auditions provide
milestones from year to year
as measurements of progress**

Sponsored by
the Largest
Organization of
Piano Teachers
in the World



Audition participation
and absence from school
APPROVED BY
TEXAS EDUCATION
AGENCY

National Guild of Piano Teachers

Teachers Division of
American College of Musicians
Founded in 1929 by Irl Allison
International Headquarters
P.O. Box 1807
Austin, Texas 78767 U.S.A.

I am interested in joining the Piano Guild. Please send me more information about membership and Guild Goals.

MR.
MRS.
MISS

(PRINT OR TYPE NAME AND ADDRESS)

ADDRESS

CITY

STATE

ZIP



LAFAYETTE MUSIC

"The Friendly Music Store"

3700 Johnston St. * Lafayette LA 70503

Phone: (337) 984-3700

Toll Free: (800) 999-1625



Stanbury
UNIFORMS

WILL GREEN

Louisiana Representative

Cell: (337) 277-7791

musicmanwg@yahoo.com

**YAMAHA • KING • SELMER-BACH • LUDWIG • GEMEINHART
LEBLANC-HOLTON • BOOSEY & HAWKES • PEARL • PREMIER • CONN
BUFFET • JUPITER • ROSS • DINKLES • DIRECTOR'S SHOWCASE • STYLE PLUS**

Introducing...

Beyond
**Quaver's Marvelous
General Music Curriculum**
Grades K-5



**Check it out at
QuaverCurriculum.com**



1-866-917-3633 • info@QuaverMusic.com • [Facebook.com/QuaverMusic](https://www.facebook.com/QuaverMusic) • QuaverMusicBlog.com

©2013 QuaverMusic.com, LLC



Save the Date!

Join us for the 40th Annual OAKE National Conference in Atlanta, GA, March 20-22, 2014 at the Sheraton Atlanta Hotel. Conference Highlights will include nearly 50 inspiring sessions, demonstrations and concert hour performances. Invited guests include:

♪ Ann Kay, Keynote Speaker ♪ Jay Broeker, Mini-Conference ♪ Atlanta Junior Ceili Band, Opening Ceremonies ♪ African American Choral Ensemble, University of Georgia, Opening Concert ♪ The Rosin Sisters, Friday Night Entertainment ♪ Ron Daise, Expert on Gullah Culture ♪ Urban Youth Harp Ensemble, Georgia Boy Choir, Young Singers of Callanwolde, Midday Concerts ♪ Joan Gregoryk, Eugene Rogers, Elaine Quilichini, Eric Nelson, National Choirs' Conductors ♪

Visit www.oake.org/conferences for more information.



OAKE



Organization of
American Society Educators

MUSIC FOR EVERYONE

LMEA State Conference 2013

The 2013 LMEA State Conference and All-State activities will be held in Baton Rouge, LA, in the convention center of The Crowne Plaza Hotel. The dates are Thursday, November 21, 2013 (All-State Registration begins) through Monday, November 25, 2013.

LMEA 2013 Conference Pre-Registration

For LMEA members who do not have All-State Participants

(This form must be postmarked no later than Nov. 15, 2013)

Name _____

School _____ LMEA District _____

Please check the most appropriate area of interest:

___Elementary ___Vocal ___Band ___Jazz ___Orchestra ___Other

School _____

Address _____

Phone _____

For Retired LMEA Members there is no registration fee

Collegiate Student Member Fee \$15

Regular Member Pre-registration Fee \$60

(Regular Member Registration at Conference \$75)

Make Check Payable to LMEA

Mail to: Scotty Walker

108 Benton Drive

Lafayette, LA 70507

LMEA 25 Year Service Pin Pre-Registration

Postmark Nov. 15, 2013 Deadline for Service Pin Notification

LMEA will present a 25 year service pin to any member who has completed 25 years of active membership in NAFME/LMEA. In order to receive the pin, you must fill out this form and mail it to Scotty Walker, 108 Benton Drive, Lafayette, LA 70507 by Nov. 15, 2013. Pins will be presented prior to the All-State Choir Performance on Saturday, November 23, 2013, at 3:15 p.m.

Name _____

Address _____

Phone _____

Year/Dates of Membership _____ to _____

The 2013 Louisiana Music Educators Association Annual State Music Conference

Crowne Plaza Hotel, Baton Rouge, Louisiana

November 21-25, 2013

Sara Bidner, President Bruce Lambert, Executive Secretary James Hearne, Program Chairman

All-State Conductors and Featured Clinicians

Symphonic Band: *Lt. Col. Larry Lang is Commander and Conductor of the United States Air Force Academy Band.*
Concert Band: *Dennis Hopkins is the former Director of Fine Arts for the Austin ISD with over 40 years of award winning service as a band director.*
Mixed Choir: *Dr. Charles Bruffy has been the Artistic Director of the Kansas City Chorale since 1988 with 4 Grammy Awards to his credit.*
Women's Chorale: *Dr. Betsy Cook Weber directs the top large choral ensemble, the Moores School Concert Chorale and the University Women's Chorus.*
Orchestra: *Anthony Elliot is a Professor of Music at the University of Michigan in Ann Arbor and a frequent guest soloist with major orchestras.*
Jazz: *James Ketch is a Professor of Music and Director of Jazz Studies at the University of North Carolina at Chapel Hill.*

LMEA Hall of Fame Inductee

Fran Hebert *is LMEA Vocal Division Chairman with 40 years experience with Lafayette/St. Martin Parish schools and Nicholls State University.*

LAJE Hall of Fame Inductee

Leah Chase-Kamata *is a renowned jazz vocalist and staple of the New Orleans music fabric.*

Outstanding Administrator Award

Keith Bonin *is currently Principal at Sulphur High School and has been Principal of the Year in Calcasieu Parish multiple times.*
Karen Cunningham *has served in Beauregard Parish as Director of Curriculum and currently as Assistant Superintendent.*

Outstanding Young Music Educator Award

Alex Hilliard, Kaplan High School; Megan Thren Luke, Sixth Ward Middle School, Chackbay Elementary, and Bayou Boeuf Elementary; Aaron Theall, DeRidder High School; Paula Vickers, Mandeville Middle School; and David Will, Westside Jr. High School

Concerts and Guest Performances

(A total of 9 performances will be presented at the conference from November 21st through 25th.)

<i>The Louisiana All-State Mixed Choir</i>	Conductor: Charles Bruffy	Chairman: Fran Hebert
<i>The Louisiana All-State Women's Chorale</i>	Conductor: Betsy Cook Weber	Chairman: Fran Hebert
<i>The Louisiana All-State Jazz Ensemble</i>	Conductor: James Ketch	Chairman: Lee Hicks
<i>The Louisiana All-State Orchestra</i>	Conductor: Anthony Elliot	Chairman: Joseph Leblanc
<i>The Louisiana All-State Concert Band</i>	Conductor: Dennis Hopkins	Chairman: Daphne Richardson
<i>The Louisiana All-State Symphonic Band</i>	Conductor: Larry Lang	Chairman: Richard Bresovar
<i>University of Louisiana at Monroe Wind Ensemble</i>	Conductor: Derle R. Long	
<i>University of Louisiana at Monroe Concert Choir</i>	Guest Conductor: Jason Rinehart	
<i>University of Louisiana at Monroe Jazz Ensemble</i>	Conductor: Deborah Chandler	
	Conductor: Larry Anderson	

Demonstration Groups for Clinics

The University of Louisiana at Monroe Bayou Brass – Band Division
The Madisonville Junior High School Symphonic Band – NAFME Collegiate Summit

Eighteen (18) Business Meetings Are Scheduled During the Conference

LMEA Vocal Division, LMEA Elementary Division, LMEA Orchestra Division, LMEA Jazz Division, LMEA Band Division, LMEA Middle School Option Committee, LMEA General Membership, LAKE Board of Directors, LAKE General Membership, LA ORFF General Membership, LAJE Board of Directors, LAJE General Membership, LBA Board of Directors, LBA General Membership, LMBC General Membership, NAFME Collegiate Membership, CBDNA Membership, and Phi Beta Mu Membership

NAfME Summit for Collegiate Members/Advisors and General Sessions for LMEA Membership

(A total of 9 sessions will be presented for the Collegiate NAfME Division on November 24th and 25th.)

Dominick Messina is the Director of Bands at Madisonville Junior High School.

Greg Handel is Acting Director of the School of Creative and Performing Arts and Associate Professor of Music Education at Northwestern State University
Sharon Joy is Assistant Professor of Music Education at Northwestern State University of Louisiana, specializing in elementary music education.

Sara J. Bartolome is an Assistant Professor of Music Education at Louisiana State University.

James L. Byo is the Carl Prince Matthies Professor of Music Education and a Distinguished Teaching Professor at Louisiana State University.

Lorie Enloe is the Associate Professor of Music Education at the University of Idaho, Lionel Hampton School of Music.

Melissa C. Brunkan is an Assistant Professor of Music Education at Louisiana State University in Baton Rouge.

Margaret Perrin Sharpe

is a Supervisor of Curriculum and Instruction with the St. Tammany Parish Public School System for in the areas of music, art and physical education.

Timothy W. Schneider is the Principal at Fontainebleau Junior High School in Mandeville, LA.

Guest Clinicians for Elementary and Vocal Divisions and General Sessions

(A total of 25 clinics will be presented for the Elementary and Vocal Divisions between November 21st and 24th.)

Christine Fisher is the NAfME Southern Division President.

Brent Holl is currently the Basic Orff instructor for the summer course at Virginia Commonwealth University (Sponsored by Red Stick AOSA)

Ruth Dwyer is the director of education and associate director of the Indianapolis Children's Choir (ICC). (Sponsored by LAKE)

Susan Brumfield is Professor of Music Education at Texas Tech University (Sponsored by LAKE).

John Mlynczak is the Education Market Manager for PreSonus Audio.

Melonee Cooper is Director of Choirs at Dequincy High School and DeQuincy Middle School in Calcasieu Parish.

Dr. Sara J. Bartolome is an Assistant Professor of Music Education at Louisiana State University.

Steve Campbell is a drummer, educator and musical director of Dancing Drum.

Kelly Stomps is an elementary music specialist at Woodlake Elementary School in St. Tammany Parish.

Casey Doucet is an elementary music teacher at Vincent Settlement Elementary School in Calcasieu Parish.

Keith James is an elementary music educator at Westdale Heights Academic Magnet in East Baton Rouge Parish.

Edward McClellan is CMENC Chair and Assistant Professor and Coordinator of Music Education at Loyola University in New Orleans.

Amanda Schlegel is an assistant professor of music education at The University of Southern Mississippi and currently serves as chair of the music education division.

Deborah McClung-Guillory is Associate Professor and coordinator of Group Piano and Piano Pedagogy at the University of Louisiana at Monroe.

Patti DeWitt Folkerts is an editor of several series of books, a composer, and veteran teacher who lives in the Houston, Texas area

Ron Slabbink is the Director of Media, Visual and Performing Arts at Christian Brothers High School in Sacramento, CA.

Guest Clinicians for Band, Jazz Ensemble and Orchestra Divisions

(A total of 14 clinics will be presented for the Band, Jazz and Orchestra Divisions from November 23rd to 25th.)

Ryan Nowlin is a member of "The President's Own" United States Marine Band, where he currently serves as staff arranger.

Dean Sorenson is Associate Professor and Director of Jazz Studies at the University of Minnesota. (Sponsored by LAJE)

Jerry Tolson is professor of jazz studies and music education at the University of Louisville. (Sponsored by LAJE)

David Phy is a private music teacher with great success in Boston, the University of Illinois and the New Orleans area.

Glen J. Hemberger is Professor of Music, Director of Bands, and conductor of the Wind Symphony at Southeastern Louisiana University.

Karl Carpenter is Principal at Pineville High School and is a member of the LMEA Hall of Fame. (Sponsored by Phi Beta Mu)

James Boldin is a member of the faculty in the School of Visual and Performing Arts at The University of Louisiana at Monroe.

James Layfield is the newly appointed Emy-Lou Biedenharn Chair in Music and Low Brass Studio Instructor at The University of Louisiana at Monroe.

Aaron Witek is the Instructor of Trumpet at the University of Louisiana at Monroe

Joseph Nassar is Assistant Director of Bands at St. Amant High School in St. Amant, Louisiana.

Kelvin Jones is the former band director at West Feliciana High School in St. Francisville, LA.

Leah Forsyth is the Adjunct Professor of Oboe at Northwestern State University.

**Louisiana Music Educators Association
2013 State Music Conference
Crowne Plaza Hotel
Baton Rouge, La.**

Sara Bidner, President
Bruce Lambert, Executive Secretary
James Hearne, Conference Chairman

November 21-25, 2013

THURSDAY

12noon-12:30p.m.
12:30-4:30 p.m.
1:30-2:45 p.m.
2:30-7:00 p.m.
3:00-3:50 p.m.

4:00-4:50 p.m.

5:00-6:00 p.m.

5:55-9:15 p.m.
6:00-6:30 p.m.
6:00-8:30 p.m.
7:30-8:30 p.m.

8:00-10:30 p.m.

FRIDAY:

Friday Morning:

8:00 a.m.-12:00 Noon
8:00-8:50 a.m.

8:30-9:00 a.m.

9:00-9:50 a.m.

9:00-9:50 a.m.

8:45-11:15 a.m.
9:00-11:30 a.m.
10:00-10:50 a.m.

10:00-10:50 a.m.

11:00-11:50 a.m.

Women's Chorale Registration (Chaperones Only)

Women's Chorale Rehearsal

LAKE Board Meeting

Conference Registration

Elementary Division Clinic

Consultant: Steve Campbell, Musical Director Dancing Drum

Topic: ***Drumbeat for Success: Teaching Good Character Through Music***

Elementary Division Clinic

Consultant: Melonee Cooper and Kelly Stomps

Topic: ***SLTs and Assessment in the Music Classroom***

Elementary Division Clinic

Consultant: Dr. Sarah Bartolome, Louisiana State University

Topic: ***Šoktim! Lithuanian Folk Dance for the General Music Classroom***

Mixed Choir Rehearsal

Mixed Choir Registration (Chaperones Only)

Women's Chorale Rehearsal

Elementary/Vocal Division Reading Session

Consultants: Dr. Susan Brumfield, Texas Tech University

Title: ***Reading Session: Tried, True and New Songs, Too!***

Packets: *Provided by J. W. Pepper*

LMEA Social for Elementary and Vocal Music Teachers

Conference Registration

Elementary Division Clinic

Consultant: Steve Campbell, Musical Director Dancing Drum

Topic: ***Drumming Up World Music: West African Rhythms and Songs***

Collegiate Exhibits open to LMEA Members and All-State Groups

(Available for Women's Chorale 8:30-9:00 a.m.)

Vocal Division Clinic

Consultant: Ronald Slabbinck, Director of Visual and Performing Arts
Christian Brothers High School

Topic: ***More Time for Music! One-Minute Theory and Sight Singing***

Elementary Division Clinic

Consultant: Brent Holl

Topic: ***Focus on Improvise!***

Site: Bayou-Levee Room

Sponsor: Red Stick Chapter, American Orff-Schulwerk Association

Women's Chorale Rehearsal

Mixed Choir Rehearsal

Vocal Division Clinic

Consultant: Dr. Patti DeWitt

Topic: ***'Getting Excited About Sight Reading'***

Elementary Division Clinic

Consultant: Dr. Susan Brumfield, Texas Tech University

Topic: ***First, We Sing: Songs and Games for the Music Classroom***

Vocal Division Clinic

Consultant: Deborah McClung Guillory, Associate Professor of Piano
University of Louisiana Monroe

Topic: ***A Musical Approach to Rhythm through Movement***

11:00 a.m.-12:00 noon

Elementary Division Clinic

Consultant: Ruth Dwyer, Director of Education and Associate Director of the Indianapolis Children's Choir

Topic: ***Harmony in Sequence Session #1: Essential Elements: Grades 4-9***

Sponsor: Louisiana Association of Kodály Educators (LAKE)

General Exhibits Open to General Membership

11:00 a.m.-4:00 p.m.

Friday Noon:

12:00-12:50 p.m.

Friday Afternoon

1:00-4:00 p.m.

1:00-1:50 p.m.

LAKE Business Meeting and BYO Luncheon

Conference Registration

Guest Performance Choir: University of Louisiana-Monroe Concert Choir

Conductor: Deborah Chandler
University of Louisiana-Monroe

1:00-1:50 p.m.

Elementary Division Clinic

Consultant: Dr. Sarah J. Bartolome, Louisiana State University

Topic: ***Dainuokim! Lithuanian Music for the General Classroom***

12:50-3:50 p.m.

Women's Chorale Rehearsal

12:50-5:00 p.m.

Mixed Choir Rehearsal/All-State Activities

2:00-2:50 p.m.

Elementary Division Clinic

Consultant: Dr. Susan Brumfield, Texas Tech University, Lubbock TX

Topic: ***Practical Pedagogy (Part 1):
Activities for Practicing Musical Skills***

Sponsor: Louisiana Association of Kodály Educators (LAKE)

2:00-2:50 p.m.

Vocal Division Clinic

Consultant: Dr. Patti DeWitt

Topic: ***'The Amazing Power of Audiation in the Choral Rehearsal'***

3:00-3:30 p.m.

Collegiate Exhibits open to LMEA Members and All-State Groups

(Available for Mixed Choir 3:00-3:30 p.m.)

3:00-3:50 p.m.

Vocal Division Clinic by All-State Choir Conductor

Consultant: Dr. Charles Bruffy, Kansas City Symphony Chorus Conductor

Topic: ***"Music or Mere Sound?"***

3:00-3:50 p.m.

Elementary Division Clinic

Consultant: Ruth Dwyer, Director of Education and Associate Director of the Indianapolis Children's Choir

Topic: ***Harmony in Sequence Session #3: Sight-Reading Made Easy: Grades 4-9***

Sponsor: Louisiana Association of Kodály Educators (LAKE)

3:30-4:00 p.m.

Orchestra Registration

4:00-5:30 p.m.

Orchestra Sectional Auditions

4:00-4:10 p.m.

Outstanding Young Music Educator Award

Awardees: Paula Vickers, Mandeville Middle School

4:10-5:00 p.m.

All-State Women's Chorale Concert

Conductor: Dr. Betsy Cook Weber, Director of Choral Studies
Moore School Concert Chorale &
University Women's Chorus

5:00-6:30 p.m.

General Exhibits Open to General Membership

Friday Evening:

6:00-6:30 p.m.

Jazz Band Registration

6:30-10:00 p.m.

Jazz Band Rehearsal

6:30-7:20 p.m.

Elementary Division Clinic

Consultant: Brent Holl

Topic: ***The Rondo, an Orff classic. (Help, Help me Rondo!)***

Sponsor: Red Stick Chapter, American Orff-Schulwerk Association

7:00-9:15 p.m.

Mixed Choir Rehearsal

7:30-8:30 p.m.

Orchestra Winds and Percussion Sectional Rehearsal

8:30-10:00 p.m.

Orchestra Rehearsal

SATURDAY

Saturday Morning:

8:00 a.m.-12:00 Noon

Conference Registration

8:00-9:00 a.m.

Orchestra Division Business Meeting

8:15-8:50 a.m.

Vocal Division Business Meeting

8:30-9:20 a.m.

Elementary Division Clinic

Consultant: Casey Doucet and Keith James

Topic: ***SLTs and Assessment in the Music Classroom II***

9:00-9:50 a.m.	Jazz Clinic by All-State Jazz Conductor (Required for All State Jazz Band) Consultant: James Ketch, Director of Jazz Studies, University of North Carolina at Chapel Hill <i>Topic: "Jazz Essentials: Developing More Informed and Inspired Soloists!"</i>
9:00-10:00 a.m.	Collegiate Exhibits open to LMEA Members and All-State Groups (Available for Orchestra 9:00-10:00 a.m.)
9:00-9:50 a.m.	Orchestra Division Clinic by Orchestra All-State Conductor Consultant: Anthony Elliot, University of Michigan <i>Topic: What to do Before the Curtain Rises</i>
8:50-11:30 a.m.	Mixed Choir Rehearsal
9:30-10:20 a.m.	Elementary Division Clinic Consultant: Dr. Susan Brumfield, Texas Tech University <i>Topic: Practical Pedagogy (Part 2): MORE Activities for Practicing Musical Skills</i>
10:00 a.m.-3:00 p.m.	Sponsor: Louisiana Association of Kodály Educators (LAKE) General Exhibits open to LMEA Members and All-State Groups
10:00-10:50 a.m.	General Session Consultant: Amanda L. Schlegel, Assistant Professor of Music Education University of Southern Mississippi School of Music <i>Topic: Brain-Based music teaching</i>
10:00 a.m.-12:00 noon	Jazz Band Rehearsal
10:00 a.m.-12:00 noon	Orchestra Rehearsal
10:30-11:20 a.m.	Elementary Division Clinic Consultant: Brent Holl <i>Topic: Marimba Jam! (Grades 4-8)</i> Sponsor: Red Stick Chapter, American Orff-Schulwerk Association
11:00-11:50 a.m.	Band Division Clinic Consultant: Dr. David Phy, Adjunct Professor of Trombone at UNO <i>Topic: An introduction to double tongue techniques for jazz and classical trombone players.</i>
11:30 a.m.-12:20 p.m.	Elementary Division Clinic Consultant: Ruth Dwyer, Director of Education and Associate Director of the Indianapolis Children's Choir <i>Topic: Harmony in Sequence Session #3: Reading Session: Grades 4-9</i> Sponsor: Louisiana Association of Kodály Educators (LAKE)
12:20-12:50 p.m.	Elementary Division Business Meeting
Saturday Noon:	
12:00 noon-1:00 p.m.	Past Presidents and Hall of Fame Luncheon
12:00 noon-12:45 p.m.	Guest Performance Jazz: University of Louisiana-Monroe Jazz Ensemble Conductor: Larry Anderson University of Louisiana-Monroe
Saturday Afternoon:	
12:50-2:45 p.m.	Mixed Choir Rehearsal
1:00-3:00 p.m.	Conference Registration
1:00-1:30 p.m.	Annual General Membership Business Meeting
1:30-2:20 p.m.	General Session - NAFME Consultant: Christine Fisher, NAFME Southern Division President <i>Topic: Common Core and Music Literacy</i>
1:15-2:00 p.m.	LAJE Executive Board Meeting
1:30-2:30 p.m.	Orchestra String Sectionals
1:30-2:30 p.m.	Orchestra Wind and Percussion Rehearsal
2:00-3:00 p.m.	LBA Board of Directors Meeting
2:30-6:30 p.m.	Orchestra Rehearsal
2:30-6:30 p.m.	Jazz Band Rehearsal
3:00-3:05 p.m.	Hall of Fame Presentation Inductee: Fran Hebert Presenter: Anna Lou Babin, LMEA Hall of Fame Member
3:05-3:15 p.m.	Outstanding Administrator Award Site: Premier Ballroom III and II Awardee: Keith Bonin, Principal, Sulphur High School
3:15-4:00 p.m.	All-State Choir Concert Conductor: Dr. Charles Bruffy, Kansas City Symphony Chorus Conductor

4:00-6:00 p.m.

4:00-4:30 p.m.

4:30-7:30 p.m.

Saturday Evening:

6:00-6:30 p.m.

6:30-9:30 p.m.

7:00-10:00 p.m.

7:00-7:50 p.m.

8:00-10:00 p.m.

9:00-11:00 p.m.

SUNDAY

Sunday Morning:

7:30-8:00 a.m.

8:00 -8:50 a.m.

9:00-9:30 a.m.

9:00 a.m.-12:00 Noon

9:00 a.m.-2:00 p.m.

9:00-11:00 a.m.

9:30-10:20 a.m.

9:30-11:30 a.m.

9:30-11:30 a.m.

9:30-11:30 a.m.

10:00 -10:50 a.m.

11:00 a.m.-12:00 noon

11:00 a.m.-12:00 noon

11:30 a.m.-12:00 noon

12:00 noon-1:00 p.m.

Sunday Noon:

12:00 noon-1:00 p.m.

Sunday Afternoon:

1:00-3:00 p.m.

1:00-1:50 p.m.

1:00-1:40 p.m.

1:00-1:50 p.m.

1:00-2:00 p.m.

1:00-5:15 p.m.

1:40-1:50 p.m.

1:50-2:40 p.m.

2:00-3:00 p.m.

General Exhibits open to General Membership

Symphonic Band Registration

Symphonic Band Rehearsal

Concert Band Registration

Concert Band Rehearsal

Jazz Band Rehearsal

Jazz Division Clinic

Consultant: Jerry Tolson, Professor of Jazz Studies and Music Education

University of Louisville

*Topic: **The Jazz Commandments: Guidelines for Successful, Authentic Swing Performance***

Sponsor: Louisiana Association *for* Jazz Educators

Orchestra Rehearsal

LAJE/LMEA Social with “Special Guests” Jazz Performance

Sponsored: Louisiana Association *for* Jazz Educators

Church Services

Band Division Clinic

Consultant: Kelvin Jones, West Feliciana High School

*Topic: **Building a Multifaceted Program in a Small Rural/Urban School***

Band Division Business Meeting

Conference Registration

General Exhibits Open to General Membership

Concert Band Rehearsal

Jazz Division Clinic

Consultant: Dean Sorenson, Director of Jazz Studies

University of Minnesota

*Topic: **Jazz Rehearsal Game Plan***

Sponsor: Louisiana Association *for* Jazz Educators

Jazz Band Rehearsal

Orchestra Rehearsal

Symphonic Band Rehearsal

Phi Beta Mu Business Meeting

Band Division Clinic by All-State Concert Band Conductor

Consultant: Dennis Hopkins

*Topic: **Daily Routines to Improve Tone and Intonation***

**Collegiate Exhibits Open to All-State Group and Membership
(Available for Concert Band at this time)**

**Collegiate Exhibits open to All-State Group and Membership
(Available for Jazz Band at this time)**

Jazz Band Rehearsal

CNAfME/Music Teacher Education BYO Lunch and Meeting

Conference Registration

Band Division Clinic by All-State Symphonic Band Conductor

Consultant: Larry Lang

*Topic: **Keys to Developing a Successful Band Program***

**Collegiate Exhibits Open to All-State Group and General Membership
(Available for Symphonic Band at this time)**

CNAfME Collegiate Member Networking & Organization Session

Orchestra Rehearsal

Concert Band Rehearsal

Outstanding Administrator Award

Site: Premier Ballroom III and II

Awardee: Karen Cunningham, Asst. Superintendent, Beauregard Parish

All-State Orchestra Concert

Conductor: Anthony Elliot, University of Michigan

Jazz Band Rehearsal

2:00-2:50 p.m.	CNAfME Summit General Session Consultant: Dr. Lorie Enloe, Associate Professor of Music Education, University of Idaho <i>Topic: Teaching Beginning Woodwinds: The First Five Days</i>
2:00-3:30 p.m.	CBDNA Business Meeting
2:30-5:15 p.m.	Symphonic Band Rehearsal
3:00-3:50 p.m.	CNAfME Summit General Session Consultant: Dr. Melissa Brunkan, Assistant Professor of Music Education Louisiana State University <i>Topic: Save it for the Game: Voice Conservation Strategies for Music Educators</i>
3:45-3:50 p.m.	LAJE Hall of Fame <i>Inductees: Leah Chase</i> Sponsored: Louisiana Association for Jazz Educators
3:50-4:40 p.m.	All-State Jazz Band Concert <i>Conductor: James Ketch, Director of Jazz Studies, University of North Carolina at Chapel Hill</i>
4:00 -4:50 p.m.	General Session – Research Presentations Consultant: Dr. Edward McClellan, Associate Professor Music Education & Therapy Division Coordinator, Loyola of New Orleans <i>Topic: Research Presentations</i>
5:00-5:50 p.m.	General Session Consultant: John Mlynczak, Education Market Manager PreSonus Audio <i>Topic: Keeping Up With Tech-Savvy Kids, Using FREE Technology!</i>
5:00-5:50 p.m.	Band Division Clinic Consultant: Leah Forsyth, Instructor of Oboe Northwestern State University <i>Topic: DOUBLE the REED, DOUBLE the FUN! (Making your Louisiana OBOES not just good, but GREAT!)</i>
5:00-6:15 p.m.	Reading Session – LAJE Jazz Band Sponsor: Louisiana Association for Jazz Educators
6:00-7:00 p.m.	CNAfME Collegiate Member Session Moderators: Dr. Sharon Joy, Assistant Professor, Northwestern State University Dr. Greg Handel, Assistant Professor, Northwestern State University Consultants: TBA <i>Topic: Success in the First 5 Years of the Profession</i>
6:45-7:30 p.m.	Jazz Division/LAJE Business Meeting
7:00-8:00 p.m.	CNAfME Collegiate Member Dinner
Sunday Evening:	
7:30-8:30 p.m.	Guest Performance Bands: University of Louisiana-Monroe Wind Ensemble <i>Conductor: Derle R. Long, Director of Bands, University of Louisiana-Monroe</i> <i>Guest Conductor: Jason Rinehart</i>
8:30-10:00 p.m.	Concert Band Rehearsal
8:30-10:00 p.m.	Symphonic Band Rehearsal
MONDAY	
Monday Morning:	
8:00 – 10:00 a.m.	Conference Registration
8:00-8:50 a.m.	CNAfME Summit Band Rehearsal Demonstration and Interactive Session Band Division Clinic “Ways to Achieve Success with Your Band Program Through Warm Ups, Fundamentals, Patience” Consultant: Madisonville Junior High School Symphonic Band Band Rehearsal Demonstration Clinic Dominick Messina, Clinician <i>Topic: Band Rehearsal Demonstration and Interactive Session</i>
9:00 a.m.-12:00 noon	General Exhibits Open to General Membership
9:00-9:50 a.m.	CNAfME Collegiate Member Session Consultant: Sarah Bartolome, Assistant Professor of Music Education Louisiana State University <i>Topic: I am a Band Director and I have to Teach General Music! Now What?</i>

9:00-9:50 a.m.	Band Division Clinic Consultant: Joseph Nassar, Assistant Director of Bands St. Amant High School Topic: <i>Second Band Doesn't Have to Mean Second Best: Growing your program from the bottom up.</i>
9:00-9:50 a.m.	Band Division Clinic Consultants: Karl Carpenter Topic: COMPASS equals "Creative Opportunities for Music Performance Assessment Systems and Strategies" Sponsor: Phi Beta Mu
9:00 a.m.-12:00 noon	Concert Band Rehearsal
9:00 a.m.-12:00 noon	Symphonic Band Rehearsal
10:00-10:50 a.m.	CNAfME Summit General Session Consultant: Dr. James Byo, Carl Prince Matthies Professor of Music Education, Louisiana State University Topic: <i>Classroom Management: What the Research Says for Music Teachers</i>
10:00-10:50 a.m.	Band Division Clinic Consultants: James Boldin, James Layfield, Aaron Witek, members of the Black Bayou Brass, Resident Faculty Ensemble at ULM Topic: <i>Brass Chamber Music: A How-To Guide</i>
10:00-10:50 a.m.	Band Division Clinic Consultant: Glen J. Hemberger, Professor of Music and Director of Bands Southeastern Louisiana University Topic: <i>The Conducting Maestro as Modern Mentor: IT'S MOSTLY ABOUT L.I.F.E.</i>
11:00-11:50 a.m.	CNAfME Summit General Session Moderator: Dominick Messina, Director of Bands Madisonville Jr. High Consultants: Timothy Schneider, Principal, Fontainebleau Jr. High Margaret Sharpe, Supervisor of Curriculum and Instruction, St. Tammany Parish School Board Topic: <i>Building a Band Program with your Principal</i>
11:00 -11:50 a.m.	Band Division Clinic Consultant: Ryan Nowlin, Staff Arranger United States Marine Band Topic: <i>Inspire Excellence in your Young Band: Achieve the Most in Every Lesson</i>
Monday Noon:	
12:00 noon-1:00 p.m.	CNAfME Luncheon and Collegiate Summit Wrap-Up at Ninfa's Mexican Restaurant
12:00 noon-1:15 p.m.	Phi Beta Mu Luncheon and Meeting
Monday Afternoon:	
1:00-1:50 p.m.	CNAfME Summit Job Search Clinic Consultant: East Baton Rouge Schools Topic: <i>Entering the Music Education Profession: The Job Search and Interviewing for a Teaching Position</i>
1:15-2:00 p.m.	LBA Business Meeting
1:00-2:00 p.m.	LMBC Business and Information Meeting Meetings
1:00-2:00 p.m.	Non-LMEA Organization Business Meetings
1:30-2:00 p.m.	Concert Band Rehearsal
1:30-2:00 p.m.	Symphonic Band Rehearsal
2:00-2:05 p.m.	Phi Beta Mu Band Director/Contributor of the Year
2:05-2:10 p.m.	Outstanding Young Music Educator Award Awardees: Alex Hilliard, Kaplan High School Megan Thren Luke, Sixth Ward Middle School, Chackbay Elementary and Bayou Boeuf Elementary Aaron Theall, DeRidder High School David Will, Westside Junior High School
2:10-2:55 p.m.	All-State Concert Band Concert Conductor: Dennis Hopkins
3:00-3:50 p.m.	All-State Symphonic Band Concert Conductor: Larry Lang

All State Conductors



Dr. Charles Bruffy

Conductor

2013 Louisiana All-State Choir

Charles Bruffy will present a Vocal Division Clinic by All-State Choir Conductor titled "Music or Mere Sound?" on Friday November 22, 2013 from 3:00-3:50 p.m.

Charles Bruffy will conduct the All-State Mixed Choir Concert on Saturday November 23, 2013 from 3:15-4:00 p.m.

One of the most admired choral conductors in the United States, the Grammy® Award-winning conductor Charles Bruffy began his career as a tenor soloist, performing with the Robert Shaw Festival Singers in recordings and in concerts in France and at Carnegie Hall. He has been Artistic Director of the Kansas City Chorale since 1988 and the Phoenix Chorale since 1999. He has been the Director of Music at Rolling Hills Church since 1994 and Chorus Director for the Kansas City Symphony Chorus since 2008.

He is renowned for his fresh and passionate interpretations of standards of the choral repertoire, and for championing new music. His eclectic discography includes 13 recordings. The National Academy of Recording Arts and Sciences has recognized four of these recordings with a total of ten Grammy nominations and four Grammy wins: in 2008 for "Best Engineered Album, Classical" for *Grechaninov: Passion Week* featuring the Kansas City Chorale and Phoenix Chorale; in 2009 for "Best Small Ensemble Performance" for

Spotless Rose: Hymns to the Virgin Mary featuring the Phoenix Chorale; in 2012 for "Best Engineered Album, Classical" and "Best Choral Performance" for *Life and Breath: Choral Works by René Clausen* featuring the Kansas City Chorale.



Dr. Betsy Cook Weber

Conductor

2013 Louisiana All-State Women's Chorale

Betsy Cook Weber will conduct the All-State Women's Chorale Concert on Friday November 22, 2013 from 4:10-5:00 p.m.

Education: Bachelor of Music degree from North Texas State University, a Master of Music degree from Westminster Choir College (Princeton, N.J.), and a Doctorate of Musical Arts in conducting from the University of Houston. Postgraduate study as a Music Fellow at Northwestern University (Evanston, Illinois).

Professional Experience: in addition to overseeing the varied activities of the Moores School choral area, Dr. Weber directs the top large choral ensemble, the Moores School Concert Chorale, and also directs the University Women's Chorus. She also teaches various courses in conducting, choral literature, and rehearsal techniques.

Dr. Weber is highly active as a conductor, clinician, adjudicator, and presenter internationally. Under her direction, Concert Chorale has sung for the national American Choral Directors' Association convention in Miami (2007), two Texas Music Educators Association conventions (2005 & 2008), and for the prestigious Eisteddfod in Wales, UK, at which event Chorale won or placed in every category in which they entered (Chamber Choir/first place, Mixed Choir/second place, Youth Choir/third place).

She served for seven years as Assistant and later Associate, Director of the Houston Symphony Chorus. Her duties with the Houston Symphony Chorus included assisting in the preparation of large choral-orchestral works for conductors such as Christoph Eschenbach, Robert Shaw, Robert Page, Peter Schrier, and Nicholas McKeegan among many others. She is highly sought-after and active as a conductor, clinician, lecturer, and adjudicator.

Before coming to the University of Houston, Dr. Weber taught public-school vocal music (K-12). While there, she helped design various curricula, and her choirs received numerous awards and prizes. She was one of the founding directors of the all-district Spring Branch Boys Choir and also directed the Spring Branch Girls Choir.

Publications: Dr. Weber's research activities include the editing of choral/instrumental works of the 18th century composer, Michael Haydn. Publications include *Litanie della Madonna* (1782), "Regina coeli," "Kyrie," and "Dixit Dominus."

Professional Affiliations: American Choral Directors' Association, the Texas Choral Directors' Association, the Texas Music Educators' Association, National Collegiate Choral Organization, and Pi Kappa Lambda.



Anthony Elliot

Conductor

2013 Louisiana All-State Orchestra

Anthony Elliot will present an Orchestra Division Clinic titled "What to do Before the Curtain Rises" on Saturday November 23, 2013 from 9:00-9:50 a.m.

Anthony Elliot will conduct the All-State Orchestra Concert on Sunday November 24, 2013 from 1:50-2:40 p.m.

Cellist Anthony Elliott is in great demand as a soloist, chamber music performer, and teacher. Following his victory in the Emanuel Feuermann International Cello Competition in 1987, *Strad Magazine* wrote of his competition appearance "His emotional communication is often profound, and his glittering, silvery tone captivates the ear." Following quickly on the heels of his competition victory was a highly successful New York debut recital, which received a lengthy standing ovation from a capacity crowd.

Anthony Elliott's studies were with two legendary figures of the cello, Janos Starker and Frank Miller. Presently he is a Professor of Music at the University of Michigan in Ann Arbor. He has given master classes at most of America's leading music programs including Cleveland Institute of Music, Eastman School of Music, the Shepherd School of Music at Rice University, Indiana University, Oberlin Conservatory, Peabody Conservatory, Chicago's Music Center of the North Shore, and Interlochen Arts Academy. He devotes most of his summer to teaching and performing at the Aspen Music Festival.

A frequent guest soloist with major orchestras, Anthony Elliott has performed most of the standard concerto repertory with such orchestras as the New York Philharmonic, the Minnesota Orchestra, the Detroit Symphony, the Vancouver Symphony, and the CBC Toronto Orchestra. He has also commissioned new works by such composers as Primous Fountaine III, Augustus Hill, James Lee III, and Chad E. Hughes. As a soloist, his performances have been recorded and broadcast on radio and television across the United States and Canada.

Also in great demand as a chamber musician, he is a regular guest artist at the Sitka (Alaska) Summer Music Festival, the Seattle Chamber Music Festival, the Texas Music Festival, New York's Bargemusic Chamber Series, Chamber Music International of Dallas, Houston's DaCamera Series, the Victoria International Festival, and the Gateways Festival. He has also appeared as a member of Quartet Canada, with members of the Chamber Music Society of Lincoln Center, and with members of the Emerson, Juilliard, Cleveland, and Concord string quartets.

He has appeared in chamber music with the present and former concertmasters of the Berlin Philharmonic, the Concertgebouw of Amsterdam, the Philadelphia Orchestra, the Chicago Symphony Orchestra, and the Cleveland Orchestra. He performs regularly with the Michigan Chamber Players in Ann Arbor.

All State Conductors



James Ketch Conductor 2013 Louisiana All-State Jazz Ensemble

James Ketch will present a Jazz Division clinic titled "Jazz Essentials: Developing More Informed and Inspired Soloists!" on Saturday, November 23, 2013, from 9:00 to 9:50 a.m.

James Ketch will conduct the Louisiana All-State Jazz Ensemble in concert on Sunday, November 24, 2013, from 3:50 to 4:40 p.m.

James Ketch (Professor) studied music at Indiana State University (B.S. 1974) and at the University of Illinois-Urbana (M.S. 1976). Professor Ketch serves as trumpet instructor and Director of Jazz Studies. He is a Summit Record recording artist, artist-clinician for the Conn-Selmer Corporation and a faculty member of both the Jamey Aebersold Summer Jazz Workshops and the Savannah Music Festival's *Swing Central* program.

James Ketch's career reveals a deep passion for the performance and teaching of music. He is a versatile and experienced artist with considerable skills in both the classical and jazz idioms. As a professional trumpeter and conductor, he has performed internationally in England, France, Switzerland, and the Netherlands. He has performed at 15 conferences of the International Trumpet Guild, including featured or solo performances at conferences held at the University of Kentucky, Ohio State University, Ithaca College, and Arizona State University. Ketch has appeared as soloist, recitalist, chamber musician and clinician in hundreds of concert and educational venues across the nation. His classical and jazz

performances include solo recitals, guest artist appearances with orchestras, bands, and jazz ensembles, and a wide variety of chamber and commercial music. His versatility as a performer is quite notable. He performs music ranging from Louis Armstrong to Pat Metheny and from J.S. Bach to Tori Takimitsu.

Mr. Ketch is a Bach/Selmer Paris trumpet artist and clinician for the Conn-Selmer Corporation. He is a faculty artist for both the Jamey Aebersold Summer Jazz Workshops at the University of Louisville and the Savannah Music Festival. Mr. Ketch, serving as artist-clinician and consultant, has joined with Marcus Roberts in providing the leadership for the creation of the Savannah Music Festival's *Swing Central*. This is a national high school jazz band competition begun in 2008. Mr. Ketch has served as conductor for All-State Jazz Ensembles in Nebraska, North Carolina, South Carolina, and New Hampshire. As a former graduate student of trumpeter David Hickman, Mr. Ketch was active in the Keystone Brass Institutes, in conjunction with the Summit Brass. Mr. Ketch has served a President of the North Carolina Chapter of the International Association of Jazz Educators and he was a co-recipient of the first Jazz Service Award presented by the University of North Carolina-Greensboro for distinguished service to jazz education in North Carolina. From 2001-2004, he was Chair of the Department of Music at the University of North Carolina at Chapel Hill. His articles on trumpet issues and jazz studies have appeared in the Journal of the International Trumpet Guild, the Journal of the International Association of Jazz Education, and the North Carolina Music Educator.

Mr. Ketch has performed with the North Carolina Symphony Orchestra, the Mallarme Chamber Players, the Crown Chamber Brass, the Triangle Brass Band, numerous pit orchestras for touring Broadway shows, and the pit orchestra for the North Carolina Theater. As a freelance musician and educator Mr. Ketch has appeared with an extensive list of popular and jazz artists including: The Temptations, The Four Tops, Natalie Cole, Ben E. King, The Manhattan Transfer, John Pizzarelli, The Gene Krupa Orchestra, the Jimmy Dorsey Orchestra, the Ray McKinley Orchestra, the Ted Weems Orchestra, The Marcus Roberts Trio, Tom Harrell, Byron Stripling, Slide Hampton, Herlin Riley, Victor Goines, Ron Westray, Steve Wilson, Terri Lynne Carrington, Greg Gisbert, Joe Magnarelli, Joel Frahm, and many others.

James Ketch is currently Professor of Music and Director of Jazz Studies at the University of North Carolina at Chapel Hill. As an educator, Professor Ketch is the recipient of the two highest teaching awards granted by the University of North Carolina at Chapel Hill. Mr. Ketch's students have appeared in Conferences of the International Trumpet Guild as finalists in the Mock Orchestra and Jazz Improvisation Competitions. Former students perform professionally in orchestras and military ensembles, are active educators at both the university, collegiate and high school levels, and pursuing graduate study at leading universities across the country.



Dennis Hopkins Conductor 2013 Louisiana All-State Concert Band

Dennis Hopkins will present a Band Division Clinic titled "Daily Routines to Improve Tone and Intonation" on Sunday November 24, 2013 from 11:00 a.m.-12:00 noon.

Dennis Hopkins will conduct the All-State Concert Band Concert on Monday November 25, 2013 from 2:10-2:55 p.m.

Dennis Hopkins successfully taught at the high school and university level for 40 years. He received a BME Degree from Baylor University, MA Degree from West Texas A&M University, and Doctor of Arts (ABD) from Northern Colorado University. His teaching career included Director of Bands at Rosebud-Lott, Richfield, Memorial and Leander High Schools; McNeese State University, MH Baylor University and the University of Wyoming. His high schools achieved such honors at the TMEA Honor Band of Texas and his marching band won the Marching Bands of America Southern Regional Championship. He achieved consecutive UIL Sweepstakes awards at each of his high schools and was a finalist at the State Marching Band Contest each year. He finished his career as Director of Fine Arts for Austin ISD where he was over the band, orchestra, choir, elementary music, and theatre and dance departments in 100 schools with a total of 485 teachers under his supervision. He currently judges and clinics throughout Texas and surrounding states.



Larry H. Lang Conductor 2013 Louisiana All-State Symphonic Band

Larry H. Lang will present a Band Division Clinic titled "Keys to Developing a Successful Band Program" on Sunday November 24, 2013 from 1:00-1:50 p.m.

Larry H. Lang will conduct the All-State Symphonic Band Concert on Monday November 25, 2013 from 3:00-3:50 p.m.

Lieutenant Colonel Larry H. Lang, Commander and Conductor of The United States Air Force Academy Band entered the United States Air Force in January of 1990. He received his Air

Force commission through Officer Training School in San Antonio, Texas, and in May of 1990 was assigned as Deputy Commander of the Air Force Band of Flight, Wright-Patterson Air Force Base, Ohio. His remarkable success there led to his early command appointment in April 1993 as the flagship Commander of the Air Force Band of the Pacific, headquartered in Anchorage, Alaska, with detachment components in Japan and Hawaii. Under his command, the PACAF Band was chosen by the Air Force Chief of Staff to deploy to Incirlik Air Base, Turkey and Aviano Air Base, Italy in support of American and NATO troops; and to Bucharest, Romania for an international Partnership for Peace exchange. In October of 1995, he was handpicked by the Commander of Air Combat Command to lead the USAF Heritage of America

Band at Langley Air Force Base, Virginia. Under his leadership, the Heritage of America Band maintained a worldwide reputation for military and musical excellence, earning an unprecedented five Air Force Organizational Excellence Awards. From July 2004 to June 2005, Colonel Lang attended Air Command and Staff College at Maxwell Air Force Base, AL, where he earned a Master of Military Operational Arts and Science degree, followed by an assignment in July of 2005 as Commander of the Air Force Band of Liberty at Hanscom Air Force Base, Massachusetts.

A native of El Paso, Texas, Colonel Lang began his career in music as a trombonist, attending New Mexico State University in Las Cruces, where he earned his Bachelor of Music Education and Bachelor of Performance degrees in 1980. He went on to complete a Master of Science degree in Music Education at the University of New Hampshire in Durham, where his extraordinary work as student Director of the Marching Band and Jazz Ensemble II led to a faculty appointment in 1982. In 1983, Colonel Lang accepted the position of Assistant Director of Bands at McNeese State University in Lake Charles, Louisiana where he directed the Symphonic Band, the 200-member "Cowboy" Marching Band, Jazz Ensemble II, and the McNeese Summer Music and Fine Arts Program.

In 2005, Colonel Lang was elected as a member of the prestigious American Bandmasters Association. He is also a member of the National Band Association and the College Band Directors National Association, and is active as a guest conductor and clinician throughout the United States. Colonel Lang was selected by the Air Force Academy Superintendent as the Commander and Conductor of the Academy Band and assumed command in August of 2007.

Consultants



Dr. David Phy Consultant Band Division Clinic

Dr. David Phy will present a Band Division Clinic titled "And introduction to double tongue techniques for jazz and classical trombone players" on Saturday November 23, 2013 from 11:00-11:50 a.m.

Dr. David Phy graduated from the University of Louisville in 1998 earning a Music Education degree with an emphasis in Jazz. Following a year in the Cruise industry he spent 2 years at the New England Conservatory of Music in Boston, Massachusetts and completed his Masters of Music in Jazz Studies in 2002. While in Boston, he had the opportunity

to study and work one on one with Boston Symphony trombonist Norman Boulter and jazz legends such as Bob Brookmeyer, Gunther Schuller, George Garzone, George Russell and Steve Lacey. From 2007-2010 David Phy was the Graduate Assistant to Jim Pugh at the University of Illinois. While at Illinois he also studied jazz arranging and improvisation with Chip McNeil and John "Chip" Stephens.

As a private teacher David Phy has had many successes with his students. His grade school students have auditioned into top ranked all-state and district ensembles and many have gone on to college music programs around the country. His college teaching credits include Trombone instructor at the University of New Orleans, Tulane University marching band low brass instructor, Teacher of Music Appreciation at Delgado Community College and the University of New Orleans.

In New Orleans David has been featured on stage at the French Quarter and the New Orleans Jazz and Heritage Festivals. He is a "Big Easy" award winner as

a member of *Jump Jive and Wail- The Music of Louis Prima*, and has performed with national acts and jazz artists such as Marvin Hamlisch, The 4 Tops, The Temptations, Bonerama, La India, Monica Mancini, Bob Brookmeyer, Jim Pugh, Delfeayo Marsalis, Joe DeFrancesco, Tom Garling, Rodger Ingram, The Yin Yang Twins, Chip McNeil, Louis Belson, Lena Prima, Louis Prima Jr., Charo, and Ben Vereen. On the tour he performed for two years as the Lead Trombone and featured soloist for the national touring show "*In the Mood, a 1940's Review*". David was a cast member in the Emmy Award winning stage show *Blast!* and spent five years in Las Vegas, Nevada performing in venues all over the city including: The House of Blues, The Hilton Las Vegas, The Palms Hotel Casino, Las Vegas Blue Note Jazz Café, the Bellagio, The Paris Hotel and The MGM Grand Hotel Casino. He is a member of the ITA, JEN, LJMEA and the local New Orleans Musicians Union. You can find Dr. David Phy online at <http://www.davidphy.com> in the Historic Division of the National Trumpet Competition.

Before moving to Monroe, Witek served on the faculty for the Florida State University (FSU) Summer Camps and assisted in teaching the FSU trumpet studio. While at Florida State University he directed the FSU trumpet ensemble - a group that in 2011 won second place at the National Trumpet Competition and, in 2012, was a finalist. Students of his have won International Trumpet Guild Scholarships and placed as finalists in the FSU Trumpet Solo Competition. In 2011, Witek was recognized and awarded the Florida State University Teaching Achievement Award. He maintains an active clinician schedule and has adjudicated the International Trumpet Guild Youth Competition as well as the FSU Tri-State Band Festival. He has been involved with the marching arts activity since 2001 and has taught the Blue Stars Drum and Bugle Corps.



Kelvin Jones Consultant Band Division Clinic

Kelvin Jones will present a Band Division Clinic titled "Building a Multifaceted Program in a Small Rural/Urban School" on Sunday November 24, 2013 from 8:00-8:50 a.m.

Kelvin Jones is the former band director at West Feliciana High School in St. Francisville, LA where he is the recipient of the Baton Rouge Symphony Orchestra's Teacher of Distinction (2013) and the Louisiana Music Educators Association's Young Music Educator of the Year Award (2011). As Director at West Feliciana he instilled an award-winning marching band, concert band, Percussion

Ensemble, Jazz Ensemble, chamber winds, and Flag Team Color Guard.

During his tenure at West Feliciana, he consistently received high ratings and evaluations at marching, jazz, percussion, and concert band performances including the concert band receiving all Superior Ratings and Sweepstakes in both District and State Large Ensemble Festivals (all a first in the school's history). Mr. Jones's groups have performed throughout the

United States including the 2010 AutoZone Liberty Bowl Music Festival in Memphis, TN and the 2013 United States National Presidential Inauguration Music Festival in Washington DC (where the concert, jazz, marching, color guard, and percussion ensembles all received 1st place honors).

Kelvin is currently pursuing a Doctorate in Music Education at Louisiana State University. At LSU, he is a graduate and teaching assistant with both Music Education and Band departments and his responsibilities include serving as a graduate conductor with the LSU symphonic ensembles, assist with undergraduate Music Education courses, assist with the Bengal Brass Band and the renowned "Golden Band from Tigerland" Marching Band.

Mr. Jones is an active clinician, researcher, music arranger, and marching band drill writer; having arranged music and competitive drills for various high schools and college/universities across the United States. He holds degrees from Jackson State University (Bachelors of Music Education, Magna Cum Laude) and Louisiana State University (Masters in Music) and is a member of the National Association for Music Education (NAfME), CBDNA, WASBE, National Band Association, LMEA, Louisiana Association of Jazz Educators (LAJE), HBCU Band Directors Consortium, and Alpha Phi Alpha Fraternity Inc.



Leah Forsyth Consultant Band Division Clinic

Leah Forsyth will present a Band Division Clinic titled "DOUBLE the REED, DOUBLE the FUN! (Making your Louisiana OBOES not just good, but GREAT!)" on Sunday November 24, 2013 from 5:00-5:50 p.m.

Leah Forsyth currently serves as Adjunct Professor of Oboe at Northwestern State University. Prior to joining the NSU faculty she served as Oboist with the United States Army Field Band in Washington DC, where she also performed regularly throughout the United States with the

Woodwind Ambassadors Quintet. She previously held the position of solo English Horn with the West Virginia Symphony Orchestra from 2005-2007. A native of Central Ohio, Ms. Forsyth holds a Bachelor of Music degree from the University of Cincinnati College-Conservatory of Music and a Master of Music degree from The Florida State University where she studied with Dr. Mark Ostreich and Dr. Eric Ohlsson respectively. She has performed with the Tallahassee Symphony, Charleston (SC) Symphony, Ohio Light Opera, Brevard Music Center Orchestra, and the Columbus (OH) Symphony Orchestra. She was also a member of the Favorable Winds Quintet, performing throughout Central Ohio from 2005-2007. Ms. Forsyth currently performs with orchestras throughout Louisiana and in Texas with the Texarkana Symphony Orchestra. She is a founding member of the Three Reeds Duo with husband and saxophonist Paul Forsyth. Three Reeds performs throughout the world, building a repertoire ranging from baroque and classical transcriptions to contemporary and newly commissioned works. For more information on Leah Forsyth please visit www.LeahForsythMusic.com.



Joseph Nassar Consultant Band Division Clinic

Joseph Nassar will present a Band Division Clinic titled "Second Band Doesn't Have to Mean Second Best: Growing up your program from the bottom up" on Monday November 25, 2013 from 9:00-9:50 a.m.

Joseph Nassar is Assistant Director of Bands at St. Amant High School in St. Amant, Louisiana where he conducts the Marching Band, Symphonic Band, Concert Band, and Jazz Band, and teaches courses in guitar. Mr. Nassar holds both a Master of Music (MM) and Bachelor of Music Education (BME) from Louisiana

State University, and obtained National Board Certification in Early Adolescence through Young Adulthood Music. At St. Amant, all bands under his direction have earned multiple sweepstakes awards at LMEA state festivals events and have received numerous first-place awards in local and state-wide competition. Previously, Mr. Nassar served as Band Director at Donaldsonville High School and Prairieville Middle School.

Mr. Nassar maintains an active schedule, having appeared as a concert band and marching band clinician, guest conductor, and adjudicator throughout Louisiana. He was a performer at the 25th Annual Horn Symposium in Tallahassee, Florida, has contributed to several research projects in music education, including "An Investigation of Creative Potential in High School Musicians: Recognizing, Promoting, and Assessing Creative Ability through Music Composition," and is a three-time recipient of the Ascension Fund Grant for Teaching Excellence. In 2008, he was selected by School Band and Orchestra Magazine to represent Louisiana in the December 2008 feature entitled "50 Directors Who Make a Difference."

Mr. Nassar is a member of the National Association for Music Education, the Louisiana Music Educators Association, Phi Beta Mu, and the District IV Band Directors Association, where he has served as president for the past seven years.

Consultants



Dr. Karl Carpenter Consultant Band Division Clinic

Karl Carpenter will present a Band Division Clinic (sponsored by Phi Beta Mu) titled "COMPASS equals Creative Opportunities for Music Performance Assessment Systems and Strategies" on Monday November 25, 2013 from 9:00-9:50 a.m.

Dr. Karl Carpenter is Principal of Pineville High School, the Magnet Center for the Creative and Performing Arts in Rapides Parish and was the 2012 inductee for the LMEA Hall of Fame. Dr. Carpenter has had an illustrious career in music education as well as public school administration.

Carpenter received his Bachelor of Music Education and Master of Music degrees from Northwestern State University in Natchitoches. He earned the Ph.D. in Educational Leadership from the University of Southern Mississippi, where he studied school law with Dr. Johnny Purvis, a nationally noted scholar on school safety, crime and violence. He most recently completed the National Association of School Resource Officers (SRO) Basic Training Course in conjunction with the Rapides Parish Sheriff's Office.

Karl began his teaching career in 1979 as band director of Oberlin High School, and from there moved to become band director of Winnfield Senior High School in 1982. He became band director of Tioga High School in 1983, and while at Tioga High School, built one of the largest band programs in Central Louisiana, earning many regional, state and national awards.

Carpenter served on the LMEA Board of Directors for 19 years. His elected positions have been District Director, Band Division Chairman, Orchestra Division Chairman and President.

In 1999, Carpenter was promoted to the assistant principal position at Tioga High School. In 2003, Carpenter became the principal at Carter C. Raymond Middle School in Lecompte, and after serving in that position for four years, he became the Principal at Pineville High School, the Magnet Center for the Creative and Performing Arts.



Aaron Witek Consultant Band Division Clinic

Aaron Witek (with James Layfield and James Boldin) will present a Band Division Clinic titled "Brass Chamber Music: A How-To Guide" on Monday November 25, 2013 from 10:00-10:50 a.m.

Dr. Aaron Witek is the Instructor of Trumpet at the University of Louisiana at Monroe where his duties include teaching Applied Trumpet, Music Enjoyment for non-majors, and performing with the faculty ensemble in residence Black Bayou Brass. He earned a Doctorate of Music in Trumpet Performance from Florida State University (FSU) where he also completed his Master of Music in Performance. In addition, he received his Bachelor of Music in Education degree at the Crane School of Music at SUNY Potsdam. His principal teachers have included Christopher Moore, Bryan Goff, John Ellis, and Alex Jokopi.

Dr. Witek maintains an active performance and clinician schedule. He currently is the Principal Trumpet in the Monroe Symphony Orchestra, Second Chair of the Sinfonia Gulf Coast Orchestra, and has performed with the Tallahassee Symphony Orchestra, Albany Georgia Symphony Orchestra, and the Orchestra of Northern New York. Also, in 2008 he founded tallBRASsee, a professional brass quintet that plays regularly in northern Florida and has been featured at the Florida Music Educator's Association Convention in Tampa. He has been active in numerous competitions including winning an International Trumpet Guild Scholarship and first place in the Historic Division of the National Trumpet Competition.

Before moving to Monroe, Witek served on the faculty for the Florida State University (FSU) Summer Camps and assisted in teaching the FSU trumpet studio. While at Florida State University he directed the FSU trumpet ensemble - a group that in 2011 won second place at the National Trumpet Competition and, in 2012, was a finalist. Students of his have won International Trumpet Guild Scholarships and placed as finalists in the FSU Trumpet Solo Competition. In 2011, Witek was recognized and awarded the Florida State University Teaching Achievement Award. He maintains an active clinician schedule and has adjudicated the International Trumpet Guild Youth Competition as well as the FSU Tri-State Band Festival. He has been involved with the marching arts activity since 2001 and has taught the Blue Stars Drum and Bugle Corps.



Dr. Glen J. Hemberger Consultant Band Division Clinic

Glen J. Hemberger will present a Band Division Clinic titled "The Conducting Maestro as Modern Mentor: IT'S MOSTLY ABOUT L.I.F.E." on Monday November 25, 2013 from 10:00-10:50 a.m.

Glen J. Hemberger is Professor of Music, Director of Bands, and conductor of the Wind Symphony at Southeastern Louisiana University. As a clinician, conductor, and lecturer, Dr. Hemberger has appeared throughout the United States, Europe, Scandinavia, Asia, and Australia. Prior to his appointment at Southeastern in 1999, he served as Associate Director of Bands at Oklahoma State University, on the ensemble and conducting faculty at the University of Rhode Island, and as Director of Bands at Thornton High School in Colorado.

Dr. Hemberger received the Bachelor's degree in Music Education and Master of Music degree in Instrumental Conducting from the University of Colorado at Boulder, studying with Allan McMurray, and the Doctor of Musical Arts degree in Wind Conducting and Repertoire from the University of North Texas where he was a student of Eugene Migliaro Corporon.

Professor Hemberger has given educational workshops and seminars for numerous schools and professional associations, including the Queensland University of Technology in Brisbane, Australia, the Beijing Band Directors Association, the Society for American Music, and state conventions of the Louisiana, Oklahoma, and Rhode Island Music Educators Associations. He has conducted a variety of musical ensembles around the globe, including the National Taiwan University Wind Orchestra, the Melbourne Youth Symphonic Wind Band, the New Orleans Civic Symphony Orchestra, and the United States Coast Guard Band. Dr. Hemberger is the first American to ever conduct the Chinese Military Armed Police Band housed at Tiananmen Square in Beijing. In recent years, he has adjudicated the Yamaha European Open International Band Festival and the Norwegian School Band Championships held in Hamar, Norway, the Norwegian National Wind Band Championships in Trondheim, and served as guest conductor for the Association for Music in International Schools Festival Honor Band at the American School of The Hague, The Netherlands.

He has appeared as a conductor at regional conferences of the College Band Directors National Association, National Band Association, and the Percussive Arts Society, as well as the 1996 international conference of the Asia and Pacific Band Directors Association in Hong Kong. His performances have been heard and seen on radio and television broadcasts including Georgia Public Radio, and NPR.

Dr. Hemberger has collaborated in performances with many of the world's most respected instrumentalists, including John Bruce Yeh, Philip Smith, Brian Bowman, Scott A. Hartman, Ed Shaughnessy, and Eugene Rousseau. He has received praise for his innovative programming and quality performances from numerous composers including Karel Husa, Frank Ticheli, Richard Prior, and Mark Camphouse. He is active in commissioning new works and has conducted many premiere performances, including the Concertino for Horn and Wind Symphony, premiered at the 2004 Southern Division Conference of the CBDNA/NBA in Atlanta, Georgia with virtuoso Eric Ruske. Dr. Hemberger's service to the music profession has most recently been recognized with the 2004 Hammond Regional Arts Award. He is a contributing research associate to five volumes of the educational series Teaching Music Through Performance in Band. Dr. Hemberger is a member of Phi Beta Mu, Pi Kappa Lambda, and Phi Mu Alpha Sinfonia, and has been listed in Who's Who in American Education, Who's Who in the World, and the millennium edition of Who's Who in America.



Consultants



Dr. James Boldin

Consultant Band Division Clinic

James Boldin (with James Layfield and Aaron Witek) will present a Band Division Clinic titled "Brass Chamber Music: A How-To Guide" on Monday November 25, 2013 from 10:00-10:50 a.m.

Dr. James Boldin maintains a diverse career as an educator and performer. He is a member of the faculty in the School of Visual and Performing Arts at The University of Louisiana at Monroe, where he currently holds the Dr. William R. Hammond Professorship in Liberal Arts.

He has performed at the 44th and 45th International Horn Symposiums, and at numerous regional horn workshops. He has also presented clinics at the Midwest Clinic International Band and Orchestra Conference, the Louisiana Music Educators Association State Convention, and the South Central Regional Music Conference. He performs extensively with Black Bayou Brass, a resident faculty ensemble at The University of Louisiana at Monroe. As a member of this ensemble, he has performed recitals and presented master classes throughout the region and abroad. Recent engagements include performing at the National Association of College Wind and Percussion Instructors national conference in San Diego, CA, and a series of performances and master classes in Thailand at Mahidol University, Silpakorn University, and the Royal Thai Navy Music School.

An active orchestral musician, Boldin holds positions with the Shreveport Symphony Orchestra, Rapides Symphony Orchestra, and Monroe Symphony Orchestra. He has also performed with the South Arkansas Symphony Orchestra, Louisiana Lyric Opera, Opera East Texas, and with numerous orchestras in the Midwest, including the Madison, La Crosse, Green Bay, Manitowoc, and Oshkosh Symphony Orchestras. As a soloist, he has performed with the Monroe Symphony Chorus, the ULM Wind Ensemble, and the ULM Symphony Orchestra.

His debut solo recording, *Jan Koetsier: Music for Horn* was released in 2013 on the MSR Classics Label. He has also been recorded on the Summit Records label and on two orchestral recordings, *James Dick Plays Edward Grieg*, with the Texas Festival Orchestra conducted by JoAnn Falletta, and *Overtures from Overture Hall*, with the Madison Symphony Orchestra conducted by John DeMain. His articles have been published in *The Instrumentalist Magazine* and *The Horn Call: The Journal of the International Horn Society*, and his musical arrangements have been published by Cimarron Music Press. In 2012 he was awarded a Career Advancement Grant from the Louisiana Division of the Arts. He also maintains a website devoted to horn playing and teaching at <http://hornworld.me>. Boldin is a member of The College Music Society, The National Association of College Wind and Percussion Instructors, and The International Horn Society, and currently serves as IHS area representative for the state of Louisiana. Boldin earned the Doctor of Musical Arts and Master of Music degrees from the University of Wisconsin-Madison, and a Bachelor of Music degree from Appalachian State University. For more information on horn study at ULM, visit the [ULM Horn Studio website](#).



Dr. James Layfield

Consultant Band Division Clinic

James Layfield (with James Boldin and Aaron Witek) will present a Band Division Clinic titled "Brass Chamber Music: A How-To Guide" on Monday November 25, 2013 from 10:00-10:50 a.m.

Dr. James Layfield is the newly appointed Emy-Lou Biedenbarn Chair in Music and Low Brass Studio Instructor at The University of Louisiana at Monroe. He

currently teaches applied low brass lessons, brass methods and aural skills. He was previously on faculty at the Flint School for Performing Arts in Flint, MI. His students have attended or are currently attending prestigious universities and have received high accolades.

In spring of 2012, Dr. Layfield received a Doctorate in Trombone Performance from The University of Michigan. He also holds degrees from Southern Methodist University and The University of Texas at Arlington. His principal instructors have included John Kitzman, David Jackson and Dennis Bubert.

Dr. Layfield is the principal trombone of the Monroe Symphony Orchestra and has been a member of the Saginaw Bay Symphony and Warren Symphony. He has performed with the Dallas Symphony, Dallas Wind Symphony, Shreveport Symphony, Lansing Symphony, Dallas Brass Quintet, Michigan Philharmonic, Dallas Jazz Orchestra, and many other orchestras. In 2011, his trombone quartet, EuFouria, was selected as co-winner of the Eastern Trombone Workshop Quartet Competition as well as a finalist in the International Trombone Festival Quartet Competition.



Ryan Nowlin

Consultant Band Division Clinic

Ryan Nowlin will present a Band Division Clinic titled "Inspire Excellence in your Young Band: Achieve the Most in Every Lesson" on Monday November 25, 2013 from 11:00-11:50 a.m.

Ryan Nowlin, a native of Cleveland, Ohio, holds both his Bachelor of Music and Master of Music degrees from Bowling Green State University (Ohio). He has taught for ten years at the beginning, middle school, high school, and college levels including wind ensemble, jazz ensemble, and marching band direction. Mr. Nowlin was an instructor of

conducting and band scoring at BGSU and was recently recognized as one of the university's Accomplished Graduates.

Mr. Nowlin is an active composer and arranger, and has co-authored with noted author, composer, and educator Bruce Pearson the *Tradition of Excellence Comprehensive Band Method*, the textbook *Teaching Band with Excellence*, and the *Excellence in Theory* music theory, history, and ear training workbooks. In 2010, Mr. Nowlin joined "The President's Own" United States Marine Band, where he currently serves as staff arranger.

Works presented by this publisher have been prepared by Ryan Nowlin in an unofficial capacity and neither "The President's Own" United States Marine Band, the U.S. Marine Corps nor any other component of the Department of Defense or the U.S. Government have endorsed this material.



Dr. Lorie Enloe

Consultant Collegiate Division Clinic

Lorie Enloe will present a CNAFME Summit General Session titled "Teaching Woodwinds: The First Five Days" on Sunday November 24, 2013 from 2:00-2:50 p.m.

Lorie Enloe, Ph.D., Associate Professor Music Education, University of Idaho, Moscow, ID

Lorie Enloe is the Associate Professor of Music Education at the University of Idaho, Lionel Hampton School of Music, where she has conducted the University Concert Band and taught both undergraduate and graduate music education courses. Before coming to the University of Idaho, Enloe was a successful high school and middle school band director in North Carolina and Kentucky. She has maintained a successful woodwind studio and has played clarinet, bass clarinet, and bassoon with the Mid-Columbia Symphony, Washington Idaho Symphony, Rendezvous Orchestra, Coeur d'Alene Symphony, Opera Plus, and the

Fayetteville (NC) Symphony. She is in demand as a clinician, adjudicator, and guest conductor in Idaho, Montana, Wyoming, and Washington.

Dr. Enloe completed her Ph.D. and Master of Music in Music Education at the University of North Carolina at Greensboro and can be heard on recordings of the UNCG Wind Ensemble: *equus*, *internal combustion*, *october*, and *whirr*. She is a graduate of Transylvania University in Lexington KY, where she obtained a Bachelor of Arts in clarinet performance and music education. She studied conducting with Peter J. Martin at Transylvania University and with John R. Locke at The University of North Carolina at Greensboro. She studied clarinet with Peter Martin at Transylvania and Kelly Burke at UNCG, where she also studied bassoon with Michael Burns and oboe with Ashley Barret. Her book, *Teaching Beginning Woodwinds: The First Five Days*, published in fall 2013 by Sol Ut Publishing, provides step-by-step instructions for helping teachers start beginning flute, clarinet, and alto saxophone players with a focus on characteristic tone, correct playing position, and a rhythmic foundation based on beat subdivision. Dr. Enloe will present a session similar to her LMEA Conference session at the International Midwest Band and Orchestra Clinic in December.

Consultants



Melissa C. Brunkan Consultant Collegiate Division Clinic

Melissa C. Brunkan will present a CNAfME Summit General Session titled "Save it for the Game: Voice Conservation Strategies for Music Educators" on Sunday November 24, 2013 from 3:00-3:50 p.m.

Melissa C. Brunkan, Assistant Professor of Music Education at Louisiana State University in Baton Rouge, LA holds degrees from the University of Minnesota (B.M., music education, choral conducting), Northwestern University (M.Mus., vocal performance/pedagogy), and The University of Kansas (Ph.D., music education). Prior to her work at Louisiana State University, she taught in public and private schools in the Minneapolis/St. Paul, Milwaukee, and Chicago areas for twelve years, teaching students from pre-K through adult with an emphasis on secondary choral/vocal music. Other experience has included private voice teaching as well as conducting, musical theater directing, post-surgical vocal pedagogy consultation, and workshop facilitation.

Dr. Brunkan has sung and conducted professionally with choirs, opera and theater companies and churches throughout the United States, including the Minnesota Chorale, the Florentine Opera, Stages Theater Company, and the Twin Cities Womens' Chorus. Vocal performance has taken her to places such as Denver, CO, New York, NY and Chicago, IL. Recently, she founded a community choir for adults with intellectual disabilities. Her choirs have sung with artists and conductors from places such as China, Venezuela, and Indonesia, performing in various venues from the Minnesota State Capitol to the Kennedy Center.

Her primary research interests include the use of gesture in choral/vocal pedagogy, lifespan voice pedagogy, singers with medical conditions affecting the voice, conductor gesture and behaviors, and the adolescent voice. Her research has been presented at regional, national, and international venues in such places as Philadelphia, Tucson, Newfoundland, and Greece. Brunkan has published articles in various journals including *Journal of Research in Music Education*, *International Journal of Research in Choral Singing*, and *The International Journal of Music Education: Research*. She has held leadership roles in professional organizations such as the American Choral Directors' Association, serves on the Board of Directors for the VoiceCare Network, and has served as editorial assistant for *IJME: Research*.



Dr. Sharon Joy Consultant Collegiate Division Clinic

Sharon Joy with Greg Handel will present a CNAfME Collegiate Member Session titled "Success in the First 5 Years of the Profession" on Sunday November 24, 2013 from 6:00-7:00 p.m.

Sharon Joy is currently Assistant Professor of Music Education at Northwestern State University of Louisiana in Natchitoches, specializing in elementary music education. She teaches undergraduate and graduate courses in music education and is committed to inspiring and preparing successful music educators. She has over twenty-five years of music teaching experience and taught elementary music in the Houston Independent School District for 11 years, where she coordinated many district-wide events, wrote elementary music curriculum, and conducted staff development sessions concerning creative music education, opera-writing, and integration of the fine arts in basic curriculum. A published songwriter/composer, she was also a teaching artist with Houston Grand Opera and Texas Institute for the Arts in Education, guiding students in the composition of original music and operas.

Dr. Joy taught previously at the University of Houston, where she coordinated music teacher certification and was the Assistant Director of Graduate Studies. She has presented clinics at the Louisiana and Texas Music Educators Association conferences, National Association for Music Education (NAfME), International Studies Association Conference, Gulf Coast Orff Association, and Society for Intercultural Education, Training and Research (SIETAR), and is a clinician for public school districts and educational organizations.

She has composed, arranged, and produced music for performance and studio recording, including two full-length recordings for children, *The Joy of Music* and *We are the Future*. Dr. Joy has facilitated Orff certification classes and workshops for elementary music educators in northern and central Louisiana.

Dr. Joy received her D.M.A. from University of Houston, master's degree from the University of Saint Thomas and her bachelor's degree from the State University of New York at Stony Brook.



Dr. Greg Handel Consultant Collegiate Division Clinic

Greg Handel with Sharon Joy will present a CNAfME Collegiate Member Session titled "Success in the First 5 Years of the Profession" on Sunday November 24, 2013 from 6:00-7:00 p.m.

Greg Handel is Acting Director of the School of Creative and Performing Arts and Associate Professor of Music Education at Northwestern State University of Louisiana. Prior to his appointment at Northwestern State, Handel held the position of Instructor of Music and Assistant

Director of Bands at Augustana College (SD), and served Arizona State University as a Graduate Teaching Assistant in the Sun Devil Bands program, as well as serving as a Graduate Intern in the Music Education Practicum class at ASU.

He has taught all levels of instrumental music in both the public schools of Sioux Falls, SD, and Tempe, AZ. He has also been published in the *Journal of Historical Research in Music Education*, and the *Music Educator's Journal*, and recently collaborated on a project presented at the International Symposium for Assessment in Music Education held in Bremen, Germany.

Handel is a member of the NAfME, College Music Society, MayDay Group, Kappa Kappa Psi, Tau Beta Sigma, Phi Mu Alpha, and the Louisiana Music Educators' Association. He is also active in the history Special Research Interest Group (SRIG) sponsored by the Society for Research in Music Education, as well as a member of Society for Music Teacher Education. Dr. Handel received the Bachelor of Arts degree in Music Education from Augustana College (SD), the Master's of Music degree in Music Education from Arizona State University, and the Doctor of Musical Arts degree with cognates in historical research and instrumental conducting from Arizona State University.



Dominick Messina Consultant Collegiate Division Clinic

Dominick Messina will present a CNAfME Summit Band Rehearsal Demonstration and Interactive Session Band Division Clinic titled "Ways to Achieve Success With Your Band Program Through Warm Ups, Fundamentals, Patience" on Monday November 25, 2013 from 8:00-8:50 a.m.

Dominick Messina will present a CNAfME Summit General Session titled "Building a Band Program with your Principal" on Monday November 25, 2013 from 11:00-11:50 a.m.

Dominick Messina is the Director of Bands at Madisonville Junior High School. Since his arrival, the MJHS Band has received Superior ratings at the Parish, District, and State levels. In addition, Mr. Messina was awarded "Teacher of the Year" at MJHS for the 2012-2013 school year. Prior to his arrival at MJHS, Mr. Messina served as the Director of Bands at Mandeville High School, the Assistant Director of Bands at Northshore High School and the Instructor of Trumpet at Southeastern Louisiana University. Mr. Messina received the Bachelor's Degree in Music Education and Master of Music Degree in Trumpet Performance from Southeastern Louisiana University. Throughout his years at Southeastern, he was a member of every major instrumental ensemble, including the Faculty Brass Quintet and the Wind Symphony. After a brief time as interim Director of Bands at De La Salle High School, Mr. Messina accepted a graduate assistantship to begin degree work on a Master in Music in Trumpet Performance at The Florida State University. While at Florida State, he performed in the Symphony Orchestra, Wind Orchestra, and Chamber Winds.

Mr. Messina is a frequent performer and freelance musician throughout the New Orleans area, in classical, jazz, and Broadway venues. He has performed with the Mississippi Symphony Orchestra, the Jefferson Performing Arts Society, The Al Belletto Big Band, Harry Connick, Sr., Charmaine Neville, and Bobby Vinton. Also, he has performed for over forty Broadway shows and operas including, *The Producers*, *Dreamgirls*, *Sound of Music*, and *The King and I*.

Mr. Messina has given lectures and clinics at various schools and universities. He has served as a faculty member of Southeastern's *Young Musicians Camp* and the *Algoma Music Camp* in Ontario, Canada. His professional memberships include Louisiana Music Educators Association Music Educators National Conference, and the International Trumpet Guild.



Consultants



Dr. James L. Byo

Consultant
Collegiate Division Clinic

James L. Byo will present a CNAfME Summit General Session titled "Classroom Management: What the Research Says for Music Teachers" on Monday November 25, 2013 from 10:00-10:50 a.m.

James L. Byo is the Carl Prince Matthies Professor of Music Education and a Distinguished Teaching Professor at Louisiana State University in Baton Rouge. His research, which appears in major research journals and texts, resides on both sides of the podium—in teacher/conductor error detection and gesture and performer rhythm reading and tuning. He has presented research in numerous states as well as England, Spain, Japan, and Austria. Byo has served as editor of *Update: Applications of Research in Music Education*, chair of the research division of the World Association of Symphonic Bands and Ensembles, and editorial committee member of the *Journal of Research in Music Education*. Currently, he is the program evaluator for the National String Project Consortium and a member of the Executive Committee of the Society for Research in Music Education.

A former public school band and orchestra conductor in Wooster, Ohio, he holds music education and oboe performance degrees from Youngstown State University and a Ph.D. from Florida State University. He studied oboe with Loyal Mould and John Mack. For eight seasons he performed professionally with the Youngstown and Wooster Symphony Orchestras. More recently he was conductor of the 80-member Louisiana Junior Youth Orchestra and the LSU High School Honors Wind Ensemble.

Byo has authored two books, "The Woodwinds: Performing, Understanding, and Teaching" and "The Habits of Musicianship: A Radical Approach to Beginning Band," the latter co-authored with Bob Duke of The University of Texas-Austin. The Habits of Musicianship was released in the spring of 2007 and is distributed cost-free as a service to music education.



Dr. Timothy W. Schneider

Consultant
Collegiate Division Clinic

Timothy W. Schneider will be part of a panel assisting in the presentation of a CNAfME Summit General Session titled "Building a Band Program with your Principal" on Monday November 25, 2013 from 11:00-11:50 a.m.

Timothy W. Schneider, Ph.D. is the Principal at Fontainebleau Junior High School in Mandeville, LA. He holds a Bachelor of Arts in Music Education from the University of New Orleans, a Master of Music Education from Loyola University in New Orleans, and a Doctor of Philosophy degree in Educational Leadership and Administration from the University of

Southern Mississippi in Hattiesburg.

During his tenure as Principal of Fontainebleau Jr. High, Dr. Schneider has been chosen as a *Fellow* in the School Leadership Center of Greater New Orleans and served on many district-wide committees. He was named the 2009-10 *St. Tammany Middle/Jr Principal of the Year* and chosen as a *Louisiana Regional Principal of the Year*.

Before assuming his current post, Dr. Schneider was the Assistant Principal and Director of Bands at Northshore High School, where his program was considered one of the outstanding instrumental music programs in the south. During his tenure at Northshore, his bands consistently rated superior in concert, jazz and marching idioms, participating or competing in such events as the National Adjudicators Invitational Concert Festival, the Louisiana Showcase of Marching Bands, and the Loyola University Jazz Festival, as well as for President George W. Bush's visit to New Orleans in 2001.

Dr. Schneider has served as Instructor of Trombone and Euphonium at Southeastern Louisiana University (1993 – 1995), and currently is teaching as a Clinical Professor of Educational Administration each summer, leading the Master's National Cohort at the University of Southern Mississippi. In March 2001, his research paper entitled, *The Impact of Music Education on Academic Achievement*, was presented at the National School Boards Association Conference in San Diego, CA as part of an Excellence in Education Forum.

As a member of the Louisiana Music Educators Association, Dr. Schneider played an active role in the leadership of the association, serving as the District IX Instrumental Coordinator, District Director and as the LMEA State President in 2001 - 2002. He has also served as a District Director and State President of the Louisiana Bandmasters Association.

In 1995, Dr. Schneider was honored as Bandmaster of the Year by LBA and in 2001, he was chosen Teacher of the Year at Northshore High School. Active as a professional musician, Dr. Schneider is currently the principal trombonist of the New Orleans Mahalia Jackson/Saenger Theater Orchestra. His recent performances include Broadway National Tours of *Wicked*, *Lion King*, *The Addams Family*, *Shrek the Musical*, and *Westside Story*. Additionally, Dr. Schneider has performed in the Tulane Summer Lyric Orchestra, and as a substitute with the Louisiana Philharmonic Orchestra. He has performed for such artists as Frank Sinatra, Ella Fitzgerald, Frankie Valle, and the Temptations. He was a founding board member of the Musical Arts Association of Slidell, LA and a member of the Slidell Community Concert Band and Jazz Ensemble.



Margaret Perrin Sharpe

Consultant
Collegiate Division Clinic

Margaret Perrin Sharpe will be part of a panel assisting in the presentation of a CNAfME Summit General Session titled "Building a Band Program with your Principal" on Monday November 25, 2013 from 11:00-11:50 a.m.

Margaret Perrin Sharpe has been a Supervisor of Curriculum and Instruction with the St. Tammany Parish Public School System for the past nine years, focusing on the areas of music,

art and physical education. She hires, schedules and supervises the fine arts and physical education itinerant teachers for all schools in the district.

Ms. Sharpe was a classroom English, reading and speech teacher for eighteen years, a resource teacher for two years and was the principal of Abita Springs Junior High for four years. Additionally, she was the founding principal of Fontainebleau Junior High for eight years where she was a State Finalist for the Louisiana Principal of the Year Award.

Ms. Sharpe received a BA in English Liberal Arts from Southeastern Louisiana University with a minor in Instrumental Music. Additionally, she received a Masters in English Education, Secondary Administration and Reading Specialist, as well as a Plus 30 in Supervision. She is a Lifetime Member of the Louisiana PTA, the National PTA, the Louisiana Association of School Executives and the New Orleans School Leadership Center.



Christine Fisher

NAfME Southern Division President
General Session

Christine Fisher will present a general session titled "Common Core and Music Literacy" on Saturday, November 23, 2013, from 1:30 to 2:20 p.m.

Christine Fisher has been the Director of the Arts in Basic Curriculum (ABC) Project since 2001. Under her leadership the ABC Project has developed curriculum guides for the 2010 South Carolina (SC) Visual and Performing Arts Standards, created the SC Peer to Peer Principals Network in Support of Arts Education, arts integration assessment and program evaluation tools, the SC Council of Arts Education Presidents, (CAEP)

which meets bi-annually to work on such initiatives as recruitment and retention of arts teachers, arts education advocacy strategies and the creation of a unified position paper on arts education entitled, "Where We Stand on Arts Education."

Prior to joining the ABC Project, Fisher was a middle school band teacher in Florence, South Carolina from 1979 to 2001. She was selected twice as a school Teacher of the Year, and District Teacher of the Year, and twice selected as one of the top five Honor Roll teachers in the state. Selected as the South Carolina Teacher of the Year in 1998, she is the only music teacher to hold the honor in the program's 54-year history.

Ms. Fisher was awarded the Elizabeth O'Neil Verner Award in 2006, South Carolina's highest arts award, the South Carolina Art Education Association's Arts Advocate of the Year Award in 2004, the President's Award from the South Carolina Dance Association in 2005, the Life Time Achievement Award from the South Carolina Theatre Association in 2008. She was inducted into the South Carolina Music Educators Association Hall of Fame in 2009 and was awarded the Winthrop University Medal of Honor in the Arts in 2012. She is currently the President of the Southern Division of the National Association for Music Education.

Consultants



Amanda Schlegel Consultant General Session

Amanda Schlegel will present a General Session titled "Brain-Based music teaching" on Saturday November 23, 2013 from 10:00-10:50 a.m.

Originally hailing from Pennsylvania, Amanda Schlegel has been an assistant professor of music education at The University of Southern Mississippi since 2011, and currently serves as chair of the music education division. From 1998-2005, Amanda taught instrumental music in the public schools of western Pennsylvania. In addition to directing

instrumental music, she also taught secondary vocal music, elementary general music, drama, theory, and directed several musical theater productions. Prior to USM, Amanda was an adjunct lecturer in music education at Southeastern Louisiana University in Hammond.

Amanda holds a Bachelor of Music degree from Grove City College, a Master of Music from Northwestern University, and a Ph.D. from Louisiana State University. She teaches undergraduate secondary instrumental music methods along with introduction to music education and at the graduate level quantitative research methods, psychology of music, and measurement and evaluation. She also advises undergraduate and graduate research.

Her research interests surround music perception and cognition as a function of music teacher/conductor effectiveness. Her research has been presented at regional, national, and international conferences, most notably the National Biennial In-Service Conference of NAFME: The National Association for Music Education, the Annual Music Education Week in Washington D. C. (MENC), the International Symposium for Research in Music Behavior and the International Conference on Music Perception and Cognition (ICMPC). Her research has been published with the *Journal of Research in Music Education*, *Bulletin of the Council for Research in Music Education*, with others in submission and progress. She is a member of NAFME, College Music Society, Society for Music Perception and Cognition (SPMC), Society for Research in Music Education (SRME), National Band Association, and serves as vice-chair of Perception and Cognition Special Research Interest Group (SRIG).



Dr. Edward R. McClellan Consultant General Session

Edward R. McClellan will present a General Session Research Presentation titled "Research Presentations" on Sunday November 24, 2013 from 4:00-4:50 p.m.

Edward McClellan is Associate Professor, and Music Education and Therapy Division Coordinator at Loyola University New Orleans. His degrees are from Duquesne University (BSME; MME) and the University of North Carolina at Greensboro (PhD). Dr. McClellan has thirty years of experience from the

elementary to undergraduate and graduate levels.

Dr. McClellan has thirty years of experience from the elementary to undergraduate and graduate levels. His public school experience includes fulfilling responsibilities as elementary band teacher, middle school general music teacher and choral director, high school director of bands, orchestra director, director of jazz studies, and chairman of fine arts. During his tenure, McClellan's bands and orchestras consistently received "Superior" ratings at district, state, and national adjudication festivals. In the capacity of Chairman of Fine Arts, Dr. McClellan administered and supervised teachers in the music, art, drama, photography, and architecture programs. McClellan has held positions as state music educators association district and state chairs in Virginia and Louisiana, and chair and/or host of many professional organization city, state, and national events. McClellan continues to be active as a clinician, guest conductor, and adjudicator in Louisiana, Pennsylvania, North Carolina, South Carolina, Texas, and Virginia.

Dr. McClellan's research interests include pre-service music teacher development, sociology of music education, the psychology of music teaching and learning, and issues relevant to instrumental music education. McClellan has published research and manuscript submissions in the *Bulletin of the Council for Research in Music Education*, *Contributions to Music Education*, *Journal of Research in Music Education*, *Music Educators Journal*, *Official Journal of the Pennsylvania Music Educators Association*, and *The Instrumentalist*. McClellan has made research presentations at the International MayDay Colloquium, ISME Conference, International SoME Symposium, SMTE Symposium, CMS National Conference, CMS Southern and South Central Regional Conferences, IMEA Research Conference, and LMEA Conference. He has made presentations on *Parental Influences and Decision to Major in Music Education* (2008), *Distance Learning Graduate Programs in Music Education* (2010), *Undergraduate Music Education Major Professional Development through Experiences in the University Laboratory School* (2011), *Economic Crisis and Education Reform* (2012), and *Undergraduate Music Education Major Identity Formation in the University Music Department Culture* (2013).



John Mlynczak Consultant General Session

John Mlynczak will present a General Session Research Presentation titled "Keeping Up With Tech-Savvy Kids, Using FREE Technology" on Sunday November 24, 2013 from 5:00-5:50 p.m.

John Mlynczak offers a broad range of experiences in music education. Mr. Mlynczak is the Education Market Manager for PreSonus Audio and provides music education technology professional development and training resources for educators. John taught

music and music technology at both the elementary and secondary levels, is an active performer, maintains a steady clinician schedule in music technology, and is Chairman of the Marketing and Communications Committee for the Technology Institute for Music Educators. He also served as Chairman of the Creative Arts Assessment Committee for the Louisiana Department of Education from 2011-2013. John Mlynczak lives in Baton Rouge, Louisiana with his wife Nicole. For more information on PreSonus music education solutions, contact John at: musiced@presonus.com.



Dean Sorenson Consultant Jazz Division Clinic

Dean Sorenson will present a Jazz Division Clinic titled "Jazz Rehearsal Game Plan" on Sunday November 24, 2013 from 9:30-10:20 a.m.

Dean Sorenson is Associate Professor and Director of Jazz Studies at the University of Minnesota as well as a prolific and highly sought-after composer, arranger, trombonist, educator, and clinician. He received his bachelor's degree in trombone performance from the University of Minnesota and his master's degree in jazz arranging and composition

from the Eastman School of Music.

Mr. Sorenson has composed and arranged for numerous ensembles including the Glenn Miller Orchestra, the Airmen of Note, the United States Air Force Band, and the Minnesota Orchestra. He is active as a commissioned composer and arranger for jazz ensemble, symphony orchestra, concert band, and chamber ensembles.



Consultants



Jerry Tolson **Consultant** **Jazz Division Clinic**

Jerry Tolson will present a Jazz Division Clinic titled "The Jazz Commandments: Guidelines for Successful, Authentic Swing Performance" on Saturday November 23, 2013 from 7:00-7:50 p.m.

Jerry Tolson is professor of jazz studies and music education at the University of Louisville, where he directs instrumental and vocal jazz ensembles and teaches jazz pedagogy, jazz style, jazz history, and African American Music classes. He is a clinician for Alfred Music, a consultant for Pearson Educational Publishing, and serves as an adjudicator, guest conductor, and jazz camp instructor internationally. Tolson has presented at state, regional, and national Music Education conferences, the IAJE Conference, Jazz Education Network, the International Academy of Law and Mental Health, and the Midwest Clinic. He is the educational director for the University of Louisville Jazz Festival and co-founded U of L's African American Music Heritage Institute, a celebration of the contributions of African Americans to America's musical history, as well as a series of jazz teacher training institutes. As a composer/arranger Tolson writes for both large and small instrumental ensembles as well as vocal jazz ensembles. His vocal jazz works are published by UNC Jazz Press.

Performing on keyboards, woodwinds, and vocals, Tolson leads three groups and has worked with artists such as Delfeayo Marsalis, Antonio Hart, Don Braden, Rufus Reid, Kevin Mahogany, James Moody, Benny Golson, and Grace Kelley. Tolson's CDs include *Nu View*, *Back at the Track*, and *Fresh Squeezed*, and his groups have appeared at the Montreux Jazz Festival in Switzerland, the Umbria Jazz Festival in Italy, and in Barbados, Brazil, and Trinidad.

Tolson has been named to "Who's Who Among America's Teachers", and has received the Kentucky Music Educators "College Teacher of the Year" award and the University of Louisville Distinguished Faculty Service and Multicultural Teaching Awards. Tolson has been a board member of the University of Louisville Athletic Association, the University Club of Louisville, and the IAJE executive board. His other professional memberships include the American Federation of Musicians, Jazz Education Network, ASCAP, NARAS, College Music Society, National Band Association, Louisville Jazz Society, and National Association for Music Education.



Deborah McClung-Guillory **Consultant** **Vocal Division Clinic**

Deborah McClung-Guillory will present a Vocal Division Clinic titled "A Musical Approach to Rhythm through Movement" on Friday November 22, 2013 from 11:00-11:50 a.m.

Deborah McClung-Guillory is Associate Professor and coordinator of Group Piano and Piano Pedagogy at the University of Louisiana at Monroe. Having trained at Manhattan School of Music and Carnegie Mellon University, she is a certified Dalcroze Eurhythmics Instructor and is active as a Eurhythmics Clinician in Louisiana, Arkansas and Mississippi. Mrs. McClung-Guillory is also a certified Musikgarten, Kindermusik and Yamaha teacher and has taught classes for children in the Prep Academy of Music at ULM. She holds degrees in Piano Pedagogy and Performance from the University of North Texas (BM) and Southern Methodist University (MM). While at SMU, she taught in the Piano Preparatory Department under the supervision of Louise Bianchi. She has studied piano with Larry Waltz (UNT), Richard Cass (UNT), and Alfred Mouldous (SMU).

Mrs. McClung-Guillory is a member of the Louisiana Music Teachers Association and has served as State Rally Chairman, Chamber Music Committee Member and Collegiate Artist Chairman for the South Central Division. At ULM, Mrs. McClung-Guillory has served as accompanist for the Concert Choir and the ULM Prep Academy Youth Choir. She is also active as a solo and two-piano performer. Most recently, she performed William Bolcom's "Recuerdos" as a two-piano collaborator at the Louisiana Music Teachers Convention. During the 2005 season of the Monroe Symphony Orchestra, she was guest artist performing Gershwin's Concerto in F. Publications include "Developing a Summer Music Camp for Preschool Children" in General Music Today, Spring 2003, co-written with Dr. Andy Goodman.

Mrs. McClung-Guillory is currently the organist at Trinity Methodist Church, Ruston, La.



Dr. Patti DeWitt **Consultant** **Vocal Division Clinic**

Patti DeWitt will present a Vocal Division Clinic titled "Getting Excited about Sight Reading" on Friday November 22, 2013 from 10:00-10:50 a.m.

Patti DeWitt will present a Vocal Division Clinic titled "The Amazing Power of Audiation in the Chorale Rehearsal" on November 22, 2013 from 2:00-2:50 p.m.

Patti DeWitt Folkerts, editor of this series of books, and composer, lives in the Houston, Texas area. She has a Bachelor of Music Education degree from Henderson State University, Arkadelphia, Arkansas, a Master of Music degree from Texas A & M University at Commerce, and a Doctor of Musical Arts degree from University of Houston.

Dr. DeWitt taught for 20 years at all levels of vocal music in the public schools. For the past 14 years, she has composed music for the Texas State University Interscholastic League Sightreading Contest. In addition to almost 100 pieces in print with Southern Music Company and Hal Leonard Corporation, Dr. DeWitt self-publishes and markets her own music as well as her choral sightreading series, Music Literacy for Singers.

Dr. DeWitt has presented workshops for many state choral conventions as well as for district and classroom workshops. At the present time, Dr. DeWitt is self-employed, marketing her choral music and sightreading series and attending conventions throughout the country, focusing on the importance of music literacy skills in the choral classroom.



Ron Slabbinck **Consultant** **Vocal Division Clinic**

Rob Slabbinck will present a Vocal Division Clinic titled "More Time for Music! One-Minute Theory and Sight Singing" on Friday November 22, 2013 from 9:00-9:50 a.m.

Ron Slabbinck serves as the Director of Media, Visual and Performing Arts at Christian Brothers High School in Sacramento, CA where he also directs four of the school's eight choral ensembles. Ron received his bachelor's in Music Education from Western Michigan University (1994); his master's in Choral Conducting from CSU Sacramento (2004) where upon graduation he was inducted into Pi Kappa Lambda, and is currently a doctoral candidate in Educational Leadership at St. Mary's College of California.

He co-authored the One-Minute Theory and One-Minute Sight Singing series (KJOS Music Publishing Company) with his wife, Holly Shaw-Slabbinck and has served as a clinician and adjudicator for camps, festivals and conventions throughout the United States. In 2011 he was recognized by Stanford University for exceptional teaching. In 2012 he received the CMEA Capitol Section Excellence in Music Education Award.

Ron Slabbinck is an ardent supporter of the arts in public and private education and strives to promote quality music education whenever and wherever his voice can be heard.

Consultants



Brent Holl Consultant Elementary Division Clinic

Brent Holl will present an Elementary Division Clinic titled "Focus on Improvise!" on Friday November 22, 2013 from 9:00-9:50 a.m.

Brent Holl will present an Elementary Division Clinic titled "The Rondo, an Orff classic. (Help, Help me Ronaldo!)" on Friday November 22, 2013 from 6:30-7:20 p.m.

Brent Holl will present an Elementary Division Clinic titled Marimba Jam! (Grades 4-8)" on Saturday November 23, 2013 from 10:30-11:20 a.m.

Brent Holl lives in Bridgewater, Virginia, and is retired after teaching General Music and Choir at S. Gordon Stewart Middle School, Stuarts Draft Middle School and Stuarts Draft Elementary School in Augusta County, Virginia for 33 years. He has done adjunct teaching for James Madison University, Blue Ridge Community College, and Radford University. He is currently the Basic Orff instructor for the summer course at Virginia Commonwealth University. He received a B. S. degree from Bridgewater College, an M.M.Ed from James Madison University, and has completed all levels of Orff Schulwerk Certification at the University of Memphis. He presents workshops throughout the United States and Australia.

Casey Doucet Consultant Elementary Division Clinic

Casey Doucet with Keith James will present an Elementary Division Clinic titled "SLT's and Assessment in the Music Classroom II" on Saturday November 23, 2013 from 8:30-9:20 a.m.

Casey Doucet holds a bachelor degree in Vocal Music Education from McNeese State University, and currently teaches music at Vincent Settlement Elementary School in Sulphur, Louisiana. In addition to teaching, Doucet is the choir director at Our Lady of Prompt Succor. He received his Kodály certification through the Summer Kodály Institute at the University of Central Missouri. Doucet is also an avid musical theatre performer. He has appeared in such shows as *Keith Gates: A Retrospective Tribute* playing Father Felicia and in *Working* playing Emilio Hernandez, both at McNeese State University. He also appeared as Joe in *The Pajama Game* and The Mayor of Whoville in *Seussical the Musical*, both at ACTS Theatre. He recently appeared in the ensemble and was the understudy for Caiaphas in *Jesus Christ Superstar* through Itinerant Theatre.

Keith James Consultant Elementary Division Clinic

Keith James with Casey Doucet will present an Elementary Division Clinic titled "SLT's and Assessment in the Music Classroom II" on Saturday November 23, 2013 from 8:30-9:20 a.m.

Keith James has been an elementary music educator for 11 years. He graduated from Southeastern Louisiana University with a bachelors in music education where studied voice with Ms. Scharmal Schrock. Mr. James has been in many theatrical productions with Baton Rouge Little Theater, SLU's performing arts, and the Baton Rouge Gilbert and Sullivan Society. He continues to sing with the Baton Rouge Symphony chorus and Opera Louisiane. He currently serves on the Baton Rouge Symphony's education board, Red Stick Orff's board, and is teaching at Westdale Heights Academic Magnet, at nationally recognized school. When not working, Mr. James enjoys playing guitar and spending time with his wife and three daughters.



Kelly Stomps Consultant Elementary Division Clinic

Kelly Stomps will present an Elementary Division Clinic titled "SLT's and Assessment in the Music Classroom" on Thursday November 21, 2013 with Melonee Cooper from 4:00-4:50 p.m.

Ms. Kelly Stomps has been serving as an elementary music specialist at Woodlake Elementary School in St. Tammany Parish for the past 10 years. In addition, Ms. Stomps taught k-5 classroom music and 6-12 string instruction in East Baton Rouge Parish for her first two years of teaching. Ms. Stomps studied percussion at LSU where she received her Bachelor's in Music Education and her Master's in Music degrees. There she also received training in Level 1 and Level 2 Orff pedagogy. As Ms. Stomps has a passion for creating engaging lessons that encourage her students to reach their highest potential, Ms. Stomps firmly believes in the value of quality professional development. In order to reach her goal, Ms. Stomps was a founding member of the Red Stick Orff Chapter and is currently serving as their treasurer. Ms. Stomps has received many honors for her years of service including being named St Tammany District Teacher of the Year, Louisiana PTA Educator, and Louisiana VFW's Citizenship Educator Teacher.



Steve Campbell Consultant Elementary Division Clinic

Steve Campbell will present an Elementary Division Clinic titled "Drumbeat for Success: Teaching Good Character Through Music" on Thursday November 21, 2013, from 3:00-3:50 p.m.

Steve Campbell will present an Elementary Division Clinic titled "Drumming Up World Music: West African Rhythms and Songs" on Friday November 23, 2013, from 8:00-8:50 a.m.

Steve Campbell is a drummer, educator and musical director of Dancing Drum. His extensive travels to study percussion traditions of the world have provided Steve with a strong foundation in the art of drumming. Since 2002, he has conducted drumming programs in hundreds of schools across the country. His 20 years of drumming experience combined with his education degree led him to develop a highly effective approach to successfully integrate drumming programs into K-12 music classrooms. Steve has presented highly successful clinic sessions at the Texas, Florida, Ohio, Illinois, Mississippi, Tennessee, South Carolina and Georgia state music educators conferences.

Consultants



Ruth Dwyer Consultant Elementary Division Clinic

Ruth Dwyer will present an Elementary Division Clinic titled "Harmony in Sequence Session #1: Essential Elements: Grades 4-9" on Friday November 22, 2013 from 11:00 a.m.-12:00 noon.

Ruth Dwyer will present an Elementary Division Clinic Grades 4-9 titled "Harmony in Sequence Session #2: Sight-Reading Made Easy: on Friday November 22, 2013 from 3:00-3:50 p.m.

Ruth Dwyer will present an Elementary Division Clinic "Harmony in Sequence Session #3: Reading Session: Grades 4-9" on Saturday November 23, 2013 from 11:30 a.m.-12:20 p.m.

Ruth E. Dwyer is a frequent guest conductor and clinician for festivals, conferences, colleges and universities across the United States and abroad. She is internationally recognized as a treble choir specialist and Kodály educator. She has conducted numerous MENC, OAKE and ACDA All-State and Honor Choirs throughout the USA. Mrs. Dwyer has also directed the Field Studies International National Children's Choir held in Avery Fisher Hall at Lincoln Center, New York City.

Mrs. Dwyer is the director of education and associate director of the Indianapolis Children's Choir (ICC). Her work with the children's choir has allowed her to tour and conduct in a wide variety of venues. Choirs under her direction have performed for the Indiana Music Educators Association, the National Orff-Schulwerk Conference, the Pacific Rim International Children's Choir Festival, and in Carnegie Hall, Canada, Alaska, Hawaii and across Central Europe. As the ICC director of

education she is highly involved in curriculum development, program development, and assisting and mentoring the teaching staff.

Mrs. Dwyer is also the artistic director of the Columbus Indiana Children's Choir, a cooperative effort of the Columbus Indiana Philharmonic and the Indianapolis Children's Choir. This program helps meet the choral arts needs of seven counties in South-Central Indiana. She occasionally teaches music methods for Butler University and is a published composer, choral arranger and editor. She is also a consultant for Hal Leonard's choral textbook series. Presently, her choral works are available through Colla Voce and Hal Leonard.

Prior to her fulltime position with ICC, Mrs. Dwyer served the State of Indiana for 19 years as a public school music educator. In 1996, Mrs. Dwyer was named the Outstanding Elementary Music Educator of The Year by the Indiana Music Educators Association. Her work in the education field involves multi-cultural activities, educational needs of inner city youth, and a particular awareness of special needs students. Her teaching experiences have included K-12 choral/general music, collegiate studies, handbell and church choirs.

Ruth Dwyer earned both her bachelor's and master's degrees from Indiana University where she majored in music education, voice and secondary education. While attending Indiana University she also received her Kodály certification under the tutelage of Mary Goetze and Jean Sinor. She is currently a member of the Organization of American Kodály Educators (OAKE), AOSA, IMEA, MENC, and is a life member of the American Choral Directors Association (ACDA). Mrs. Dwyer has served as chair of the Children's Choral Repertoire and Standards Committee for the Indiana Choral Directors Association (ICDA) and the Ethnic and Multicultural Concerns chair. She is a past member of the executive board for the Indiana Music Educators Association.



Sarah J. Bartolome Consultant Elementary Division Clinic

Sarah Bartolome will present an Elementary Division Clinic titled "Šoktim! Lithuanian Folk Dance for the General Music Classroom" on Thursday November 21, 2013 from 5:00-6:00 p.m.

Sarah Bartolome will present an Elementary Division Clinic titled "Dainuokim! Lithuanian Music for the General Classroom" on Friday November 22, 2013 from 1:00-1:50 p.m.

Sarah Bartolome will present a CNAfME Collegiate Member Session titled "I am a Band Director and I have to Teach General Music! Now What?" on Monday, November 25, 2013 from 9:00-9:50 a.m.

Dr. Sarah J. Bartolome is an Assistant Professor of Music Education at Louisiana State University in Baton Rouge, Louisiana. A graduate of Ithaca College (B.M. in Voice Performance and Music Education) and Northwestern University (M.M. in Music Education with a concentration in Voice Performance and Pedagogy), she received her doctorate in Music Education from The University of Washington in 2010. As part of her doctoral studies, she completed a secondary emphasis in ethnomusicology, allowing her to pursue interests in world music for the classroom and the culture of music-making communities. In addition to her formal schooling, Bartolome has undertaken studies and fieldwork in Ghana, Sierra Leone, and South

Africa. She is also a fully certified Kodaly educator, having received all three levels of certification from the New England Conservatory's Kodaly Music Institute in 2006.

A specialist in music for children and youth, Dr. Bartolome taught elementary general music in both the Boston and Seattle metropolitan areas and has maintained a private voice studio since 2001. An active choral musician, she sang for four years with the Boston Symphony Orchestra's Tanglewood Festival chorus, and has conducted for such prestigious youth choirs as the Greater Boston Youth Chorus and the Seattle Girls' Choir. She is a frequent clinician, presenting workshops at local, regional, and national conferences and has published articles in such journals as *Research Studies in Music Education*, the *International Journal of Community Music*, the *Music Educators Journal*, and the *Kodaly Envoy*. Her scholarship has been presented at regional, national, and international conferences for such professional organizations as the National Association for Music Education, the American Choral Directors Association, the College Music Society, and the Society for Ethnomusicology. She has also contributed chapters to *The Oxford Handbook of Children's Musical Culture*, *Multicultural Perspectives in Music Education*, and *Alternative Approaches in Music Education: Case Studies from the Field*. Research interests include children's musical culture, ethnomusicology and music education, choral culture from a global perspective, service-learning in higher education, and effective music teacher preparation. Presently, Dr. Bartolome teaches courses in music education and voice at LSU, directs the LSU Girls' Choir, and teaches a small private studio of young singers.



Susan Brumfield Consultant Elementary Division Clinic

Susan Brumfield will present an Elementary/Vocal Division Reading Session titled "Tried, True and New Songs, Too!" on Thursday November 21, 2013 from 7:30-8:30 p.m.

Susan Brumfield will present an Elementary Division Clinic titled "First, We Sing: Songs and Games for the Music Classroom" on Friday November 22, 2013 from 10:00-10:50 a.m.

Susan Brumfield will present an Elementary Division Clinic titled "Practical Pedagogy (Part 1): Activities for Practicing Musical Skills" on Friday November 22, 2013 from 2:00-2:50 p.m.

Susan Brumfield will present an Elementary Division Clinic titled "Practical Pedagogy (Part 2): MORE Activities for Practicing Musical Skills" on Saturday November 23, 2013 from 9:30-10:20 a.m.

Dr. Susan Brumfield is Professor of Music Education at Texas Tech University, and holds a Ph.D. in Music Education from the University of Oklahoma. She is widely

known throughout the United States and the United Kingdom as a clinician, consultant, author, composer, arranger and conductor of children's choirs, and is an internationally recognized Kodaly educator. Frequently in demand as a guest conductor, Dr. Brumfield is the Artistic Director and Conductor of The West Texas Children's Chorus. Dr. Brumfield is a program author for the national series music texts, Silver Burdett Ginn Making Music, and a contributing author for the Hal Leonard magazine for classroom music teachers, John Jacobson's Music Express. Dr. Brumfield's choral music is available through Colla Voce Music and Hal Leonard Publications. She was invited by the International Kodaly Society to represent the United States with a new choral composition commissioned for the internationally released IKS publication *Music: A Universal Language*. Dr. Brumfield teaches in Kodaly certificate programs throughout the country. She serves as Academic Director of The West Texas Kodaly Initiative, and holds the same position in courses at Portland State University and Westminster Choir College.

Dr. Brumfield has conducted extensive field and archival research in England and Scotland, tracing the roots of American folk music in traditional British music. Her most recent publications, *Hot Peas and Barley-O: Children's Songs and Games from Scotland*, and *Over the Garden Wall: Children's Songs and Games from England* are available through Hal Leonard Publications. She is currently at work on *Giro Giro Tondo*, a new collection of children's songs and games from Italy for use in the music classroom, and on a series of pedagogy materials for music teachers.

Guest Performances Guest Conductors



The University of Louisiana at Monroe Concert Choir

**Guest Performance Vocal Division
Conductor: Dr. Deborah Chandler**

The University of Louisiana at Monroe Concert Choir and Chamber Singers will present a guest performance under the direction of Dr. Deborah Chandler on Friday, November 22, 2013 from 1:00-1:50 p.m.

Dr. Deborah Chandler is Director of Choral Activities at the University of Louisiana at Monroe where she directs the Concert Choir and the Chamber Singers and teaches choral literature and conducting.

She also is musical director and conductor of the Monroe Symphony Chorus and is the host of "Vocal Vibes" on KEDM public radio. She also serves as Minister of Music at Northminster Church in Monroe.

Dr. Chandler received her Doctor of Philosophy in Music Education/Conducting at Florida State University in 2004 where she also received her Master in Music Education. She received her Bachelor of Music Education at Valdosta State University in 1981. For over eighteen years, she served as a Director of Music in the Presbyterian Church (USA) denomination. She also taught music history and chorus at Tallahassee Community College.

At Florida State, Dr. Chandler studied with Dr. André Thomas, Rodney Eichenburger, Dr. Judy Bowers, and Dr. Kevin Fenton. She is conductor emeritus of the Tallahassee Civic Chorale and a member of the American Choral Directors Association, Music Educators National Conference, Pi Kappa Lambda, Alpha Chi Honor Society, and an honorary member of Kappa Kappa Psi and Tau Beta Sigma.

In 1993, She received the Guardian Ad Litem Exemplary Service Award and the Corinne Holleman Gridley Achievement Award in 1996. A music scholarship was established anonymously in her name at Florida State University in 1994. In June 2003, she was chosen as one of ten conductors selected internationally to study with German conductor, Helmuth Rilling, at the Oregon Bach Festival. She was also selected in 2004 to conduct with Maestro Rilling at the first Toronto Bach Festival at the University of Toronto. She also remains active as a clinician, guest conductor and adjudicator. Deborah is currently the chairperson of the Louisiana American Choral Directors Association Repertoire and Standards for colleges and universities. In March of 2011, Dr. Chandler was awarded the Outstanding Service to the Arts Award for Northeast Louisiana by the Northeast Louisiana Arts Council.



The University of Louisiana at Monroe Jazz Ensemble

**Guest Performance Jazz Division
Conductor: Larry Anderson**

The University of Louisiana at Monroe, under the direction of Larry Anderson will present a guest performance on Saturday, November 23, 2013, from 12:00 noon – 12:45 p.m.

Mr. Larry Anderson is Director of Jazz and Percussion at the University of Louisiana at Monroe, a position he has held since 1988. Prior to his appointment at ULM, he was Director of Percussion at Union High School

in Tulsa, Oklahoma, where he had a nationally recognized percussion ensemble and marching drum line.

As a performer, Mr. Anderson has established a successful career spanning thirty years as an orchestral percussionist. He has performed as a regular member with the Tulsa Philharmonic, the Tulsa Pops Orchestra, the Shreveport Symphony and the Monroe Symphony Orchestra. He has also performed with the Longview, South Arkansas, and Bartlesville Symphony Orchestras. Larry leads his own professional jazz group, the LA Jazz Combo. He has also performed with many well known artists including Dizzy Gillespie, Mel Torme, Dave Brubeck, Patti Page, Rosemary Clooney, Roger Williams, Peter Nero, Dionne Warwick, The Platters, Helen O'Connell, and Henry Mancini. Larry is an endorser for Sabian Ltd., and Pro-Mark Corporation.

As a teacher, Mr. Anderson's ensembles have performed as honor groups at the Percussive Arts Society International Convention, the Louisiana Music Educators Convention and the Oklahoma Music Educators Convention. His groups have also been featured at the National Collegiate Jazz Festival in Mobile, Alabama, the Memphis State Jazz Festival, and the Alcorn State University Jazz Festival. Mr. Anderson has published articles in the leading journal of percussion publication, the "Percussive Notes", and is sought after as an adjudicator and clinician throughout the region.

At ULM, Mr. Anderson directs the Jazz Ensemble, Percussion Ensemble, Steel Band, African Ensemble, Marching Drumline and studio percussion. He has performed solo and duo recitals, and throughout the years, his percussion students have won or placed in national competitions and gone on to successful careers as teachers and performers with such groups as Cirque du Soleil, Stomp, and Blast. Mr. Anderson held the Emy-Lou Biedenharn Endowed Professor of Music from 2007-2009. He has been selected as Outstanding Professor by Omicron Delta Kappa of ULM and he is a member of the Percussive Arts Society.



The University of Louisiana at Monroe

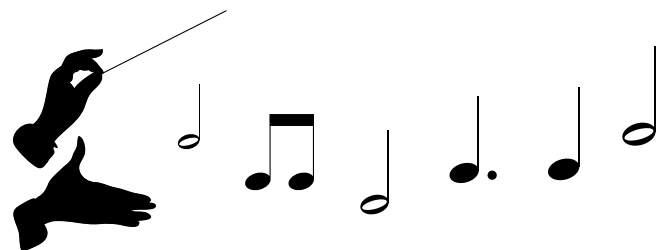
**Guest Performance Band Division
Conductor: Dr. Derle R. Long
Guest Conductor: Jason Rinehart**

The University of Louisiana at Monroe will present a guest performance under the direction of Derle R. Long on Sunday, November 24, 2013 from 7:30 to 8:30 p.m.

Dr. Derle R. Long is a veteran of over thirty years teaching experience in college, high school and junior high band programs. In addition to directing the overall ULM Band program, Dr. Long serves as

principal conductor of the ULM Wind Ensemble, teaches courses in conducting, band literature, and band administration and supervision. He holds memberships in the National Band Association, Louisiana Music Educators Association, Music Educators National Conference, and the College Band Directors National Association. In addition to his other academic and professional activities, Dr. Long currently serves as Director of the ULM School of Visual and Performing Arts. Dr. Long received his Bachelors and Masters degrees in Music Education from Louisiana State University and the Doctor of Philosophy in Music Education from the University of Southern Mississippi.

Dr. Jason Rinehart is in his seventh year as the Assistant Director of Bands and Director of Athletic Bands at the University of Louisiana at Monroe where he directs the Sound of Today, the Technical Fowls, and the Symphonic Band. He has previously taught at the University of Missouri-Kansas City, Benedictine College, and St. Louis Community College. Jason received his Doctorate in Conducting from the University of Missouri-Kansas City. He also holds degrees from Texas Tech University (Bachelor of Music Education) and Southern Methodist University (Master in Conducting). In addition, Dr. Rinehart studied with David Effron and Gunther Schuller as a Conducting Fellow at the Brevard Music Center. His conducting experience includes the Atchison Symphony, Kansas City Ballet, Fountain City and St. Louis Brass Bands, numerous collegiate orchestras and wind ensembles, and over thirty-five main stage operas and musicals. Dr. Rinehart is in demand as a clinician and has worked with ensembles in Louisiana, Kansas, Missouri, Texas, New Mexico, Oklahoma, Mississippi, California, Ohio and Illinois. Jason is in his fifth year as third horn with the Monroe Symphony Orchestra and has played with numerous orchestras in Texas, New Mexico, Kansas and Missouri. Dr. Rinehart has been involved with the drum and bugle corps activity for over 20 years beginning as a marching member with the Sky Ryders and Phantom Regiment and has previously taught with Pioneer, Capital Regiment, the Boston Crusaders and the Glassmen. Jason also hosts the show "Midday Classics" on KEDM public radio as well as a show entitled "Bandscape" on KEDM featuring the best of wind band literature.





SOUTHEASTERN

LOUISIANA UNIVERSITY • HAMMOND LOUISIANA USA

Glen J. Hemberger • Director of Bands, Professor of Music and Director of Graduate Studies in Music

Paul Frechou • Associate Director of Bands, Director of the "Spirit of the Southland" and Jazz Ensemble One

Victor Drescher • Assistant Director of Bands, Instructor of Clarinet and Coordinator of Woodwind Studies

Bachelor of Music in Performance. Bachelor of Music in Music Education. Master of Music in Music Theory.

Master of Music in Performance (including a concentration in Instrumental or Choral Conducting starting Fall 2014)

southeastern.edu

LOUISIANA MUSIC EDUCATORS AWARDS

Official Suppliers For • LMEA Medals

Contact:

Bruce Lambert

P.O. Box 12046, Lake Charles 70612

Phone: 337/436-5099

DISTRICT FESTIVAL MEDALS

Medals with PURPLE Ribbons (Superior in Concert)

@ \$2.25 each \$ _____

Medals with WHITE Ribbons (Superior in Sight Reading)

@ \$2.25 each \$ _____

Medals with RED, WHITE & BLUE Ribbons (Sweepstakes)

@ \$2.25 each \$ _____

STATE FESTIVAL MEDALS

Medals with GREEN & WHITE Ribbons (Superior at State Festival)

@ \$2.25 each \$ _____

Sub Total \$ _____

(\$8.00 for 1-50 Medals, \$16.00 for 51-100 Medals, \$24.00 for 101-150 Medals) Shipping \$ _____

TOTAL including Shipping \$ _____

Payment enclosed \$ _____

Ship To: _____
Name Title

School Name: _____ Phone Number _____

Street Address: _____

City: _____ State: _____ Zip: _____

ALL SHORTAGES AND DAMAGED MERCHANDISE SHOULD BE REPORTED IMMEDIATELY

Vendors who are interested in receiving information concerning the providing of services to LMEA in the area of T-shirt sales, photography, and/or recording should contact:

Bruce Lambert

Executive Secretary, LMEA

P.O. Box 12046

Lake Charles, LA 70612



The Louisiana Musician

THE OFFICIAL PUBLICATION OF L.M.E.A.

PAT DEAVILLE, Editor

P.O. BOX 6294

LAKE CHARLES, LOUISIANA 70606

STANDARD
U.S. POSTAGE
PAID
PERMIT # 51
70601

Swicegood Music Company of Louisiana, Inc.

COMPLETE MUSIC SERVICE

308 E. Prien Lake Rd. • Lake Charles, LA 70601

(337) 477-2704

email: swicegoodmusic@bellsouth.net

"WE SPECIALIZE IN BANDS"



SELMER - KING - CONN - ARMSTRONG - BUFFET

JUPITER - LUDWIG - PEARL - MAPEX DRUMS

EDEN - MACKIE AMPS/PA SYSTEMS - HARTKE

JAY TURSER - WASHBURN - JASMINE - DAISY ROCK GUITARS

COMPLETE BAND ACCESSORIES

MUSIC - REPAIRS

"Learn What Music Can Do For You"

JOHN AND SUZANNE KELLEY

Right Note Studio

PROFESSIONAL LESSONS
PROVIDED AT ALL LEVELS