

The Louisiana Musician

"The Official Journal of the Louisiana Music Educators Association"

Volume 80 Number 1 September 2014



Also Included:

***2014-2015 LMEA Calendar of Events
Entry Forms to LMEA Festivals
All-State and Conference Information
Conference Pre-Registration Forms
Outstanding Young Music Educator Award***

DeRidder High School "Ambassadors in Blue"

33rd Annual Marching Band Festival

October 18, 2014

Cecil Doyle Stadium DeRidder, Louisiana



CLASSIFICATIONS:

Class B – enrollment 1-399

Class A – enrollment 400-699

Class AA – enrollment 700-1149

Class AAA – enrollment 1150-1799

Class AAAA – enrollment 1800 and above

Trophies will be awarded for all superior performances (Band, Percussion, Color Guard, and Drum Major). Additionally, trophies will be awarded to the best band in each class as well as the best overall guard, drumline, and drum major.

ENTRY FORM

Name of Band: _____ Director: _____
Asst. Director: _____ Bandroom Phone #: _____
School Address: _____ email _____
City: _____ State: _____ Zip: _____
Fax # _____ School Enrollment: _____

Classification: _____ Grades Represented: _____

Number of Band Members Attending: _____ Principal's Signature: _____

*****Please note: A spiel sheet will be sent to you when schedules are sent out for the show, listing officers, music and general announcements for the group.

Remember that the entry deadline is October 3, 2014 Entry Fee is \$250.00. Make checks payable to the DeRidder High School Band .

Mail entries to DeRidder High School Band Festival

ATTN: Carolyn Herrington

723 O'Neal Street, DeRidder, LA 70634 For further information or questions please
call (337) 463-2522 ext. 10210, fax (337) 463-9358, or e-mail dhsband@beau.k12.la.us

Quaver's Beyond Marvelous General Music CURRICULUM Grades K-5™

The Future of Music Education TODAY!™



"This is a true revolution. Not just in music education, but in education in general. I absolutely love my Quaver Curriculum!"

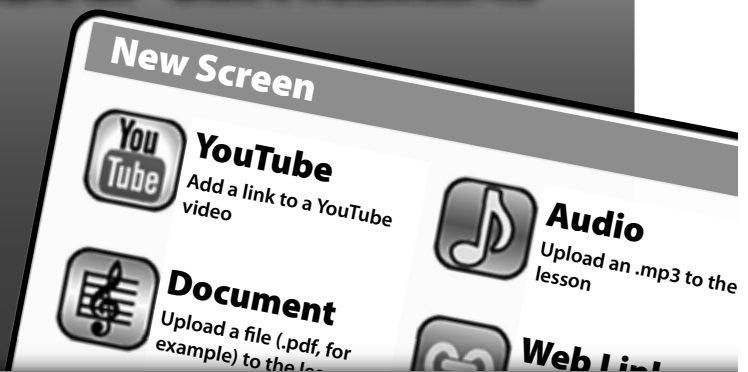
David Blanchard
Smith Elementary • Spring, TX

**Advanced Technology.
Teacher-Friendly.
SERIOUSLY FUN!**

NEW!

Customize Your Quaver Curriculum!

- Modify existing lessons or create your own from scratch!
- Insert other Quaver resources, or import your own files: MP3s, PDFs, YouTube links, and more!



Try 12 Lessons for FREE!

Just go to QuaverMusic.com/Preview and begin your FREE 30-day trial today!



**Want your very own
FREE Quaver T-Shirt?**

Just give us a call!
1-866-917-3633

Limit one per household

Quavermusic.com™

©2014 QuaverMusic.com, LLC

The Louisiana Musician

VOLUME 80

NUMBER 1

September 2014

In This Issue

From the President	3
President-Elect	4
From the Past President	4
From the Editor	5
Band Division Chairman	6
Vocal Division Chairman	6
Jazz Division Chairman	8
Orchestra Division Chairman	9
Elementary Division Chairman	9
Public Relations President	10
Collegiate MENC Chairman	10
University Division Chairman	11
LBA President	11
LAKE President	11
LASTA President	11
LAJE President	12
District I	12
Dist III	12
District IV	12
District V	13
District VI	13
District VIII	14
District IX	14
LMEA Conference Pre-Registration	18-19
Calendar of Events	20-25
All-State Jazz Ensemble Registration	26
All-State Orchestra Registration	27
Solo and Ensemble	28-29
State Solo and Ensemble	30-31
Large Ensemble	32-33
State Festival	34
Marching Band	35
Outstanding Young Music	36
Educators Award	

Buyer's Guide

DeRidder	Inside Front Cover
Quaver Music	1
Lafayette Music	13
National Guild	14
McNeese	15
DeBose	16
LMEA Awards	17
Sulphur	18
NAfME/LMEA Memb. Form	Inside Back Cover
Swicegood	Back Cover

Louisiana Music Educators Association Board of Directors

LMEA Website: <http://www.lmeamusic.org>

PRESIDENT
Sharon McNamara-Horne
18449 Hosmer Mill Road
Covington, LA 70435
sharon.mcnamara-horne@stpsb.org

PRESIDENT-ELECT
Fran Hebert
P. O. Box 61373
Lafayette, LA 70596
fwhebert@gmail.com

PAST-PRESIDENT
Sara Bidner
5840 Glen Cove Drive
Baton Rouge, LA 70809
sarabidner@yahoo.com

EXECUTIVE SECRETARY
Bruce Lambert
P.O. Box 12046
Lake Charles, LA 70612
brucelambert@att.net

DISTRICT DIRECTORS

DISTRICT I DIRECTOR
Greg Oden
106 McAlpine Dr.
West Monroe, LA 71291
oden@opsb.net

DISTRICT II DIRECTOR
Johnny Walker
5146 Windermere
Alexandria, LA 71303
johnny.walker@rpsb.us

DISTRICT III DIRECTOR
Brett Babineaux
304 N. Michot Rd.
Lafayette, LA 70580
bababineaux@lpssonline.com

DISTRICT IV DIRECTOR
Richard Bresowar
1121 E. Rome Street
Gonzales, LA 70737
Richard.bresowar@apsb.org

DISTRICT V DIRECTOR
Sharon Stephenson
1214 Laura Street
Sulphur, LA 70663
sharon.stephenson@cpsb.org

DISTRICT VI DIRECTOR
Guy Wood
3817 Williams Place
Jefferson, LA 70121
gwood68@aol.com

DISTRICT VII DIRECTOR
Jim Trant
4025 Hwy. 308
Raceland, LA 70394
districtseven@bellsouth.net

DISTRICT VIII DIRECTOR
Carol Lupton
P. O. Box 984
Benton, LA 71006
RLlupton@caddo.k12.la.us

DISTRICT IX DIRECTOR
Neal Naquin
70325 Petit Rd.
Mandeville, LA 70471
neal.naquin@stpsb.org

DIVISION CHAIRS

BAND DIVISION
Jay Ecker
700 Royal Street
Lake Charles, LA 70607
jay.ecker@cpsb.org

VOCAL DIVISION
Mike Townsend
1322 Choctaw Rd.
Thibodaux, LA 70301
rtownsend@stcharles.k12.la.us

ORCHESTRA DIVISION
Katrice LaCour
748 Coco Bed Rd.
Cloutierville, LA 71416
klacour@nat.k12.la.us

JAZZ DIVISION
Lee Hicks
69285 3rd Ave.
Covington, LA 70433
Ralph.hicks@stpsb.org

UNIVERSITY DIVISION
Jay Jacobs
5200 Nelson Rd. #408
Lake Charles, LA 70605
jjacobs@mcneese.edu

ELEMENTARY DIVISION
Michele White
1522 20th St.
Lake Charles, LA 70601
mmwhite406@mac.com

COLLEGIATE MENC
Ed McClellan
7444 St. Charles Ave. #104
New Orleans, LA 70117
emcclellan@loyno.edu

PUBLIC RELATIONS
Carolyn Herrington
2208 Blankenship
DeRidder, LA 70634
dhsband@beau.k12.la.us

EX-OFFICIO MEMBERS

EDITOR:
The Louisiana Musician
Pat Deaville
P.O. Box 6294
Lake Charles, LA 70606
patrick.deaville@cpsb.org

LBA PRESIDENT
Nanci Smith
985-384-1687
nsmith@stmary.k12.la.us

LAKE
Sheila Rae Manning
980 Pleasant Hill Road
DeRidder, LA 70634
sheilamanning@suddenlink.net

HALL OF FAME
Tom Wafer
1834 Wimpole St.
Baton Rouge, LA 70815
tdwafer@att.net

ACDA
Alissa Rowe
SLU 10815
Hammond, LA 70402
arowe@selu.edu

LAJE
B.J. McGibney
WMcgibney@ebrps.k12.la.us

AOSA
Red Stick Chapter
Sherry Barron
9676 Wesson Street
Baton Rouge, LA 70809
sherrybarron@bellsouth.net

CONFERENCE COORDINATOR
James Hearne
138 Kathy Drive
Ragley, LA 70657
james.hearne@cpsb.org

LSTA PRESIDENT
Michelle Wilkinson-Nelson
Mwn6861@aol.com

From the President *Sharon McNamara-Home*



IT'S CHANGE – IT'S GROWTH! My grandson just celebrated his first birthday! My goodness, he's changing fast! Not long ago he was "army-crawling," scooting around on his belly fast and efficiently. Then one day he figured out this crawling thing. At first, you could see the wheels turning in his head – he wasn't sure about this new method of getting around. Besides, the old way was working well and he had control of it. But finally, after working at crawling for a while, he gained control and realized how much faster and more efficiently he could move if he crawled. Now he's learning to cautiously take his first steps. When he's focused on his goal – getting to Mommy or Daddy – he can do it! But when he stops to think about it, he's unsure; it's uncharted territory! Yep – it's change, but it's also growth.

I feel like LMEA is in a similar place. We are currently exploring and making changes, both small and big. I cannot thank Dr. Sara Bidner enough for the many hours she's spent working for LMEA during the past two years as she laid the ground work for LMEA to take some new paths – to make changes. I am honored to take over where she left off as I do my best to serve you well the next two years.

NEW WEBSITE. I am very excited to share with those who haven't heard that we are currently in the design process for a new, responsive website. The executive committee has been working for the past several months with the designers to create a new layout and to tailor the menu options to meet our changing needs. Jim Trant, our current webmaster, is working to reorganize our current documents to fit into these categories. We hope to be at least partially up and running before the fall conference!

ADVOCACY. With all of the changes in education in our state the past few years and all of the uncertainty that currently exists, many music teachers/directors are struggling. Our "language" is different! Where do we go for help? Who is advocating for us? How do we advocate for ourselves? In some parishes, the questions are even more basic – Will music continue to be taught? Will I have a job?

LMEA now has a newly-formed Advocacy Committee. John Mlynczak, a Baton Rouge native and a strong advocator for music education in Louisiana and around the country, has been appointed the coordinator of this committee. If you have an interest in advocacy, contact John or me.

EDUCATION. Part of our advocacy focus will include teacher education – "how to deliver our message and reach our goals." John Mlynczak will be one of the clinicians at the fall LMEA Conference and will address this issue and other issues.

Other questions many of us have are related to our current teacher evaluation process. How do we work within the current system? Again, our language is different and not understood by many administrators. We'll be addressing this topic at the fall conference. But in the meantime, talk to successful teachers in other disciplines to see what you might adapt. Network with music teachers from across the state by email and at the conference. What's working for them? What can you contribute to this process?

NEW LAWS. Louisiana has enacted a number of new laws this summer that directly affect education. One of these laws affects the collection of student information. To comply with the new legislation, LMEA is making a number of changes in the registration process for All-State auditions. You **MUST** use this year's forms for all LMEA activities. Division chairs will address specific changes in their articles.

CHANGE! (GROWTH?) It's a scary thing! We're unsure! It's uncharted territory! And it's especially tough when we feel like we're in it by ourselves. But when we keep our goal in mind – helping our students grow – we'll be successful. Yep – it's change, but it's also growth.

If I can be of assistance or if you're interested in getting more involved, please email me at sharon.mcnamara-horne@stpsb.org. I hope you all have a terrifically successful year!



President-Elect *Fran Hebert*

Move Forward. This has been my motto for my entire professional life. As I reflect on various aspects of my involvement with LMEA, I am so grateful to every person who has influenced my path with the fundamental premise of taking positive steps. From the beginning of my career, Doris Bienvenu, Dr. Willis Ducrest, Mary Alice Cox, Tom Wafer and many others had a profound effect in establishing direction for me in regard to the things that really matter in music education. With their influence and guidance, and the support of so many friends and colleagues in the music education community, I consider how blessed I am to be a part of this profession. Especially to have been allowed to work within the realm of LMEA activities. Serving on the board as District 3 Director for ten years, and Vocal Chairman for 13 years, I enjoyed the challenges and rewards of those offices. I ask for your support as I embark on the President-Elect duties. I have a lot to live up to where leadership is concerned in this office. Sharon and Sara are wonderful role models who display focus and vision for LMEA. Under their leadership LMEA has embraced the forward motion underway on the national level which offers the support necessary to promote quality experiences for our students and directors in the state.



In June it was my pleasure to attend the NAFME National Leadership Assembly in Tysons Corner, VA. What an eye-opener!! It was awesome to listen to the representatives from our Southern Division. Most experience the same struggles and triumphs that we do and seek to make a positive impact for their organization statewide through influence in the political and professional arenas. One particular clinic that resounded with my own goals centered on the recruitment of volunteers in our activities. Volunteers make the all-state conference, and district and state festivals work effectively. If you have a desire to serve in any aspect of LMEA, please speak-up then roll-up your sleeves. We welcome your involvement.

One main focus of my two year term as President-Elect will be membership. This includes recruiting new members and retention of current members. Both need reasons to belong. An astounding statistic that I learned at the national assembly is the fact that 10,000 baby-boomers (born 1946-1964) retire daily. This generation sought membership for the sake of belonging to a group that would enhance a structured and dedicated work ethic. Subsequent generations of music educators are motivated by the opportunity to be empowered and connected. Technology will assist our organization to better serve every generation. LMEA must increasingly employ technology to expand communication and interactive capabilities with and for all our membership.

Thank you for allowing me to serve as President-Elect. I look forward to working with each of you as we develop new territory and move forward in our profession.

From the Past President *Sara Bidner*

Report on LMEA Member Survey

Many of you responded to the member survey that was sent via Survey Monkey to LMEA members in May. The survey was sent to all members for whom we had current email addresses as of January 2014. Two hundred forty-four members responded, including teachers of band, choir, general music (elementary and secondary levels), orchestra, talented arts, and music teacher preparation, as well as supervisors and administrators. All levels of teaching were represented, from preschool music through higher education, and every LMEA District was represented in the survey.

The information received from the survey responses has been very helpful in identifying the interests and needs of the membership and in providing guidance for future directions for LMEA. One of the most common requests was for a more functional, interactive, and updated website. LMEA is currently in the process of creating a dynamic website that will be far more up-to-date and user friendly. LMEA President, Sharon McNamara-Horne, is working closely with NAFME in the construction and design of the website, which will have a new look and much greater capacity.

Most recommendations from the survey centered on advocacy, professional development, and technology. In the area of advocacy, suggestions ranged from assistance for teachers in seeking local support for music programs, to interacting with governmental and state leaders. A few of the many topics identified for professional development included COMPASS and assessment training for teachers and administrators, availability of a mentoring system, adjudication training, and leadership development. Technology interests included the latest tools and programs for classroom instruction and assessment, and use of video conferencing.

We are grateful to the members who took time to express their needs and to make the LMEA Board of Directors aware of ways in which we can better serve music educators and music programs within Louisiana. The requests most frequently addressed are being given consideration in Board actions and in Conference planning. We hope you will join in supporting LMEA events, and that you will encourage your colleagues to do so, in order to strengthen the promotion and quality of music education in Louisiana. Make plans to join us at Annual Conference in Baton Rouge, November 20-24, 2014!



From the Editor's Desk

Pat Deaville

is Director of Curriculum and Instruction
Calcasieu Parish Schools



Advocacy

As music educators we often feel “left out” of the discussion about school improvement.

“Advocacy” is one way of trying to be certain that music education is not diminished in the changing educational environment.

Advocacy is a good think. It is important for us to promote the good things we do. But “advocacy” can also have a hallow ring if it just looks like self-promotion.

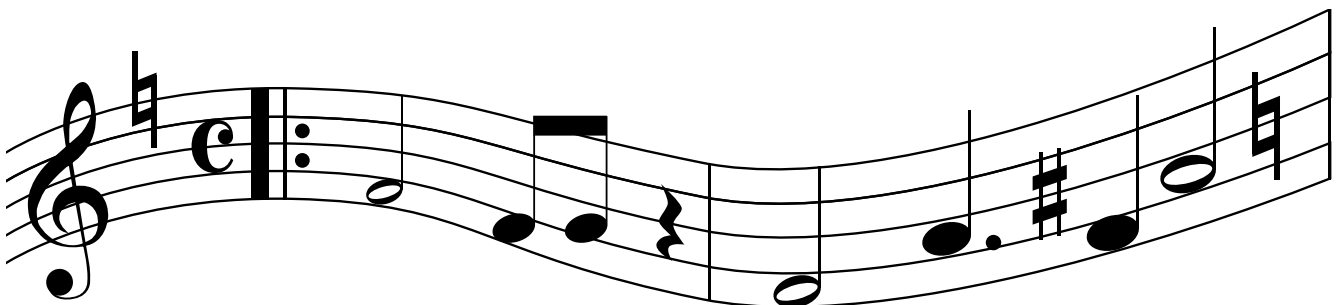
There is nothing fundamentally wrong with “tooting” one’s own horn. My wife works in advertising for the local TV station. She has spent a good part of her life convincing businesses to “toot” their own horn on TV.

There are a couple of cardinal rules to advertising. (1) False advertising eventually backfires. Your product and/or services must be of the quality you claim. (2) If you focus on criticizing your competitor’s product/services in order to make yourself look better, it will eventually backfire.

What am I getting at?

I’m an “old school” guy who embraces the “new world.” So my approach to “advocacy” straddles values of the past and the present. Here are a few tips from an old timer in laying the foundation for today’s music education advocacy.

- (1) Don’t try to promote a bad product and/or service. In other words, the foundation of advocacy starts with doing your job well. Have high standards for yourself and your students. Bragging about “how important music education is” will do harm rather than good, if you personally don’t do your job well.
- (2) Don’t try to make yourself look good by making others look bad. When you criticize others in the educational community in order to promote music education, you will do more harm than good. You will also make enemies who will undermine your efforts when you least expect it.
- (3) Identify the bull’s eye of your target audience when advocating. When your students believe in you and what you are doing, then half the battle is already won. When their parents and community members believe in you, then your advocacy is multiplied in power far beyond your single voice. The people who attend our musical performances are there for a reason. Mobilize them to your cause.
- (4) Don’t treat administrators like the enemy. Having spent half of my 40+ years in education as a music educator and the other half of my career as an administrator, I understand the pressures on both sides. No matter what, you must make school administrators into allies. The first step is understanding the pressures they feel and the expectations placed on them. Find a way to help them meet their goals before you educate them about your goals.
- (5) Be relentless and practical in your approach. It is easy to get discouraged when you feel there are forces at work bigger than you. You must never give up. But occasionally you have to give in. Pick your battles well. Know what is most important for long-term success. Live to fight another day by avoiding battles that you won’t win. Adapt and adjust while you persevere. Make strong allies of students, parents, fellow educators, community members and administrators for success in the long haul.



Band Division Chairman

Jay Ecker



Greetings, and here's hoping you've had a relaxing summer and are ready to kick off another school year!

I read with great interest our membership's responses to the LMEA Survey. It is very gratifying to have so many members offer such great suggestions. Many members commented on the small number of exhibitors and lack of a variety of professional development clinics, citing the Texas Music Educators Association convention as a model. For those of you who have attended TMEA convention, you have experienced firsthand what can be done with a state music convention. However, the 2014 attendance at TMEA convention was 26,716. With this number of attendees, you can see how there could be a much larger list of professional development clinics and workshops. Also, vendors are much more likely to set up a booth at a convention that has this many people attending. The moral of this story is that if we want a better convention, we need to support and attend. For those of you who do not attend convention, let me offer some suggestions:

- Sit in on an all state group rehearsal. The rehearsal techniques that you will pick up on will make your trip to LMEA worthwhile.
- Attend some clinics. We have nationally known clinicians as well as master educators from our own state who present a variety of interesting topics.
- Support our exhibitors. Buy some sheet music. Try out an instrument. Learn more about indoor guard and percussion. Come away with some fundraising ideas.
- Network with your colleagues. Find out what is working and what is not working in other programs.

I hope you will consider attending convention this year. If we all support and attend, I guarantee it will only get bigger and better.

Another common suggestion from the survey was to update our LMEA website. First, I would like to personally thank Jim Trant for all of his work on our current website. He has been awesome to work with and has done a fantastic job. Many of you will be happy to know that LMEA is in the process of having a brand new website built by a professional web design firm. Hopefully, our new website will be up and running by convention time. This will be a great step forward for our organization.

First Round All State Auditions

All first round auditions must be held by the last Saturday of September. All first round results need to be delivered to me via email no later than 12:00pm Sunday, September 28, 2014. Make sure that you have senior preferences before submitting 1st round results. Please be prompt so that information can be assimilated and disseminated in a timely fashion. District directors, if you have any specific questions about senior preferences and district allotments, please contact me as soon as possible.

Second Round All State Auditions

Second round All-State auditions will be held on Saturday, October 11, 2014 at Pineville High School in Pineville, Louisiana. I would like to thank in advance the Director at Pineville Mr. Johnny Walker for opening his facilities to our students. Make sure you take the time to thank him for his service!

Senior wind and percussion students who audition for All-State membership will indicate their preference for band or orchestra at their first round auditions. In assigning students to band and orchestra, only senior preferences will be honored. If a senior's rank places him or her in an unfavorable ensemble, the next highest ranked player will fill that ensemble's slot.

Registration for second round auditions will begin at 7:45 am and close at 8:15 for the students in districts 1, 2 and 8 only. Registration for districts 3,4, and 5 will begin at 9:00am and close at 9:30 am. The final registration for districts 6,7 and 9 will be open at 12:00pm and close at 12:30pm.

You must register during your district's allotted time. Students who do not show up for their registration window will not be allowed to register. The registration fee for second round is \$12.

LMEA Conference

LMEA Conference will be held in Baton Rouge, Louisiana at the Crowne Plaza, November 20-24. All-state Band members will report on Saturday, November 22, 2014. The All-State Symphonic Band will register at 4:00pm; the All-State Concert Band will register at 6:00pm. The concerts will begin at 2:00pm on Monday, November 24, 2014. The conductor of the 2014 All State Concert Band will be Amanda Drinkwater, Director of Bands at Marcus High School in Texas, and the Symphonic Band Conductor will be Dr. Peter Boonschaft, Director of Bands at Hofstra University. I would like to send out a heartfelt word of thanks to Daphne Richardson for chairing the Concert Band and Richard Bresowar for chairing the Symphonic Band.

Begin planning now to attend our annual conference, and don't miss the Band Division meeting to be held on Sunday morning.

Feel free to contact me with any questions or concerns at jay.ecker@cpsb.org. I'll see you in November!

Vocal Division Chairman

Michael Townsend



Hi Friends and Colleagues...

I can't believe, like many of you can't either, that someone besides the incredible Fran Hebert is writing this article and is the Chair of the Vocal Division now. I am honored and slightly scared to be following in the footsteps of such a great leader. I am also humbled and honored that she asked me to follow her as LMEA Vocal Division Chair. Thank you Fran and the LMEA board (and my District VII Friends) for all your support and belief in me so far. Fran ran a tight ship and I don't anticipate making any changes to her fine work over the years – mainly carrying on with what she

(and Anna Lou Babin) has created over the last several years!

I know many of you across the state, but some I don't know and I know some of you don't know me – so a brief bio – I am entering my 17th year of teaching, all but the first five have been at Destrehan High School. I have taught Jr. High, and mostly Sr. High choirs as well as fine arts survey (among a few other classes) and have just completed a 6 year stint as the Fine and Applied Arts Department

Continued on next page

Continued on from page 6

Chair at DHS. I have worked behind the scenes with Fran at LMEA Convention for the past 8 or 9 years. I am looking forward to the next couple of years (or more) as the Vocal Division Chair now in addition to everything else. I have been an adjudicator at the District level and for LMEA all-state first rounds. I have also been a clinician for several honor choirs in the state. I am married – just celebrating my 25th anniversary by the time this article comes out – and the father of 4 kids.

Well – enough about me – here is the information you are looking for:

The 2014 All-State Choir First Round audition piece is “Richte Mich, Gott” Mendelssohn, SSAATTBB, Warner Bros. - LG70179 (Sing German)

We have eliminated “Let All The Nations Praise the Lord” and replaced it with “Shenandoah” arr. by Steven Sametz, SSAATTBB, Oxford University Press 978-0-19-337283-2 (English) – which will be the first round piece next year, 2015. More information including the new song cycle can be found here:

<http://www.lmeamusic.org/choirdivision.html>

The 2014 All-State Choir Second Round audition piece is: “Kalinda” by Sydney Guillaume, published by Hal Leonard.

Tracks are online and can be found here: <http://sydneyguillauhemusic.com/choral-music/practice-tracks/>

2nd Round All-State auditions will be held Saturday October 11th at Pineville High School. Big thanks to District 2 for once again assisting us with this, especially Hollie Colvin, and Johnny Walker of Pineville High School.

In preparation for all-state choir membership, students must learn the entire first round selection even if the district chooses only a portion of the song to audition. Audition Chairmen must submit all district entries for Second Round to me no later than September 30. The entry is valid upon payment of the fee of \$12 per student. Ideally, your entry form and check should be sent together. However, I must receive the entry form by Friday, September 30, 2014 and your district fees must be paid no later than October 4, 2014, the LMEA board meeting date. Fees for alternate slots are due that day as well.

Clinicians for the 2014 LMEA All-State Choirs are Dr. Susan Brumfield from Texas Tech University for the Women’s Choir and Dr. Edith Copley from the University of Arizona for the Mixed Choir. Dr. Copley will be presenting a clinic for Directors.

We also have the clinicians picked for 2015 All-State – they will be Ms. Angie Rawls from Pearl High (Mississippi) for the Women’s Choir and Mr. Roland Carter, Professor Emeritus, The University of Tennessee at Chattanooga.

BEFORE SECOND ROUND AUDITIONS DISTRICT AUDITION CHAIRMEN SHOULD DO THE FOLLOWING:

Observe the deadline to email your second round pre-registration form: September 30th to michaeltownsend@charter.net. Please include the names of your monitor, your director designated for packet pick-up, and the contact numbers and emails of all directors sending students to second round. Be certain to identify handicapped and/or vision impaired students on this form as well – along with the necessary accommodations needed.

Pay district audition fees (\$12 per participant) no later than the LMEA board meeting, **Saturday, October 4.**

Alternates are Pre-Registered by phone only. Thursday, October 9 is the pre-registration deadline for alternates. Only pre-registered students will be allowed to audition as per LMEA board policy. Contact me by phone no later than the pre-registration deadline to replace one of your students listed on your second round pre-registration form with your district alternate. **NO WALK-IN AUDITIONS WILL BE ACCEPTED.** Make sure you contact me with your changes no later than Thursday.

Should a district submit vacant audition slots in their initial 40-student allotment, I will contact district audition chairmen by phone in a sequential order to fill these vacancies. Any district accepting these open slots must pay the \$12 audition fee prior to the audition.

Times for District Auditions are:

Vocal audition Schedule (Pineville Sr. High – 2014)

District	Sign-In	Warm-Up	Audition
3	7:45	8:20	8:55
4	8:20	8:55	9:30
5	8:55	9:30	10:05
8	9:30	10:05	10:40
1	10:05	10:40	11:15 (judge lunch 11:50-12:20)
9	11:15	11:50	12:25
6	11:50	12:25	1:00
7	12:25	1:00	1:35
2	1:00	1:35	2:10

Immediately After Second Round Auditions All Participating Directors Should Do The Following:

Check the LMEA website: www.lmeamusic.org for the posting of students selected as prospective All-State Choir members. PROCESS: Student registration forms (Form#1, Form#2, and the Academic Excellence Form) are on the website and must be printed, completed and returned to the address on the form. These forms will no longer be included in the student packet. October 22 is the deadline to submit the three completed forms along with the registration fee of \$55. NEW PROCESS: Payment is made to LMEA by school check or money order only. No personal checks accepted.

Contact the director designated to distribute all-state registration packets for your district and arrange to pick-up your members’ packets with urgency immediately after the audition weekend.

Supervise the completion and mailing of student all-state packet forms and fee check. Thank you, directors, for taking the time to do this. Mail all of your school’s entries in one envelope. Your involvement improves the efficiency of this process.

Directors, please make sure to complete and mail your Conference Registration with fee check to LMEA Past President, Sara Bidner, 5840 Glen Cove Dr. Baton Rouge, La 70809. Your registration for the convention is necessary in order for your students to participate. There is no need to send a copy of this form to me.

Be sure to reserve your conference hotel rooms on Monday, October 13, following second round auditions: Crowne Plaza Hotel, 4728 Constitution Avenue, Baton Rouge, 225-930-0174 or 225-930-0130.

Your Help in This Matter is Crucial:

Please contact me ASAP should one of your registered all-state choir members withdraw from the all-state event. I have about a 7-day-window after the October 22 all-state choir registration deadline to secure alternates and submit their names for the printed program.

State Vocal Events

State Choir Festival 2015 is April 28 – 30 at the Lake Charles Civic Center and State Solo Festival 2015 is Saturday, May 2. Again hosted by UL Lafayette.

FVA Booklets

There are a few FVA 2012 and 2014 booklets available for sale @\$2 per booklet, with a minimum of a 20 booklet order. Contact Fran to pre-order and she will email an invoice. The booklets can be picked up in the Chairman’s Library at the fall conference. Your check should be made to LMEA.

I wish you and your students a rewarding school year. I look forward to seeing each of you at the conference.

Jazz Division Chairman Lee Hicks



Hello everyone! I hope you had a relaxing summer break and were able to enjoy some quality time with your family and friends during the summer. There are some major changes to the LMEA All-State Jazz audition process this year so please read this carefully and speak with your district director if you have any issues. You can also email me at any time at Ralph.Hicks@stpsb.org.

The 2014 LMEA All-State jazz auditions will be recorded at the district level. Our main goal is to eliminate issues for those students who audition for the All-State concert bands and for All-State Jazz on the same day. It always seemed a bit unfair to those students who were stressed with having to pull off both auditions on that day and were taking a small bit of focus away from each of those auditions in the process.

The Audition Process

Each LMEA district will choose a date, time, and location to record the All-State Jazz Band auditions for students in their district. I need to know this date by August 15th. If your district needs assistance with the recording process, members of the Louisiana Association for Jazz Education (LAJE) are willing to be available to assist you. If you are not sure who, in your area, is a member of LAJE, please send me an email and I will help you get in contact with them. Completed audition recordings should be sent to me and postmarked by September 19, 2014.

Please have students fill out the jazz audition form completely and turn it in at the audition recording site prior to their audition along with the \$12 audition fee (per student/per instrument). The audition form is available in the Louisiana Musician as well as online at www.lmeamusic.org and www.lajelouisiana.org.

This year's audition requirements are also listed on both the LMEA and the LAJE websites. Scale requirements are the same as those for the All-State Band audition. We will be using SET 3 for this year's prepared pieces. The materials come from The Jazz Conception Series by Jim Snidero. Please refer to either website for the exact titles and page numbers. Students will be required to audition WITH the CD (minus their part) and must supply their own copy of the music. We will provide the recordings for the accompaniment at the auditions. We will also provide a sight-reading selection, which will be in a jazz style.

The actual audition process will be as follows:

- Student Enters the room for the recording;
- The proctor will ask if they are ready, then the proctor will PRESS RECORD on the digital recorder.
- Proctor will announce – District # and Audition/Instrument # (Ex. District 9 – Alto Sax #1)
- The student then plays IN THIS ORDER:
 - 1.) Scales (as per LMEA All-State requirements)
 - 2.) Prepared Piece 1 - play all (as per LMEA handbook)
 - 3.) Prepared Piece 2 - play all (as per LMEA handbook)
 - 4.) Improv - (as per LMEA handbook)
 - 5.) Sight Reading - (as per LMEA handbook)

The proctor will give the student the tempo as listed on the sight reading.

- Once the audition is completed, the proctor will PRESS STOP on the recorder.
- Use a separate CD for each entry. Label it with the Audition/Instrument # & District # (Ex. Alto Sax #1 – LMEA District #9).

NO EDITING!!! Once the recording starts, IT CANNOT BE STOPPED until ALL of the audition process is complete for that individual. In other words, it should be 1 COMPLETE TRACK with NO breaks (in the recordings) between scales, prepared pieces, improv, sight reading, etc.

IF there is an issue with a stuck valve, broken reed, etc., **DO NOT STOP** the recording, let it run. The judge will be able to fast forward through the elapsed time and we will still be assured that the audition process remained the same for all students.

District Directors (or the designated district representative) will mail the following items in a single package to Lee Hicks, Fontainebleau High School, 100 Bulldog Dr., Mandeville, LA 70471 no later than Friday, September 19, 2014 (postmark deadline):

- A separate CD for each entry, properly labeled (Check to make sure all CDs are playable in a CD player.)
- A completed, signed audition form from each student auditioning
- A copy of the NAFME/LMEA membership card for each director with students auditioning
- A master list to identify all Audition #'s, and the entry fees for all auditions.

Jazz audition results will be posted online at www.lmeamusic.org and www.lajelouisiana.org after all scores have been finalized for ALL All-State ensembles at 2nd round (October 11th).

This year's All-State Jazz Clinician

This year's clinician for the 2014 LMEA All-State Jazz Ensemble will be **Dr. Jerry Tolson** from the University of Louisville. Jerry Tolson is professor of jazz studies and music education at the University of Louisville, where he is chair of the music education division, directs instrumental and vocal jazz ensembles and teaches jazz pedagogy, jazz style, jazz history, and African American Music classes. He is a clinician for Alfred Music, a consultant for Pearson Educational Publishing, and serves as an adjudicator, guest conductor, and jazz camp instructor internationally. Tolson has presented at state, regional, and national Music Education conferences, the International Association for Jazz Education Conference, Jazz Education Network, the International Academy of Law and Mental Health, and the Midwest Clinic. He is the educational director for the University of Louisville Jazz Festival and co-founder of U of L's African American Music Heritage Institute, a celebration of the contributions of African Americans to America's musical history, as well as a series of jazz teacher training institutes. Tolson's articles have appeared in *Music Educator's Journal*, *Jazz Educator's Journal*, and *The Instrumentalist*, and he is a contributor to the following publications: **Teaching Music Through Performance in Jazz**, (ed. Carter and Miles), **Jazz Pedagogy: The Jazz Educator's Handbook and Resource Guide** (Dunscomb and Hill), and **The Jazzer's Cookbook: Creative Recipes for Players and Teachers**. As a composer/arranger Tolson writes for both large and small instrumental ensembles as well as vocal jazz ensembles. His vocal jazz arrangements are published by UNC Jazz Press.

Performing on keyboards, woodwinds, and vocals, Tolson leads three groups and has worked with artists such as Delfeayo Marsalis, Antonio Hart, Don Braden, Rufus Reid, Kevin Mahogany, James Moody, Benny Golson, and Grace Kelley. Tolson's CDs include *Nu View*, *Back at the Track*, and *Fresh Squeezed*, and his groups have appeared at the Montreux Jazz Festival in Switzerland, the Umbria Jazz Festival in Italy, and in Barbados, Brazil, and Trinidad.

Tolson has been named to "Who's Who Among America's Teachers", and has received the Kentucky Music Educators "College Teacher of the Year" award and the University of Louisville Distinguished Faculty Service and Multicultural Teaching Awards. Tolson has been a board member of the University of Louisville Athletic Association, the University Club of Louisville, and IAJE. His other professional memberships include the American Federation of Musicians, Jazz Education Network, ASCAP, NARAS, College Music Society, National Band Association, Louisville Jazz Society, and National Association for Music Education. Tolson and his wife, Karen, reside in suburban Louisville.

Orchestra Division Chairman *Katrice LaCour*



Welcome back everyone!

My name is Katrice LaCour and I will serve as your Orchestra Division Chairman. I look forward to meeting and working with everyone during my term so we can provide the best possible experience for our teachers and students. I'm a Graduate of Grambling State University with a degree in Instrumental Music Education. My primary instrument is the Double Bass and my minor instrument is the Trumpet. On Double Bass I participated in the Ruston Civic Symphony, Grambling State Symphony and Jazz Ensemble, Monroe Civic Symphony and Northwestern State University Symphony Orchestra. On Trumpet I was a member of the Grambling State University Tiger Marching Band and Jazz Ensemble. After college and a brief stint in the public school system I toured professionally for 18 years performing U.S.O. and M.W.R. shows for military troops and entertaining guest on Royal Caribbean Cruise Lines. Seven years ago I moved back to Natchitoches Louisiana where I have been orchestra director at Northwestern State University Elementary and Middle Lab Schools. I also work with Talent Band and Orchestra students at Natchitoches Central High School.

I am pleased to announce this year's All-State Orchestra conductor is Dr. Gene Moon. Our All State Orchestra conductor has influenced and provided a musical path for students since 1998. Dr. Moon has conducted Orchestras across the United States to Seoul, Korea. He is currently the Director of Orchestras, Stephen F. Austin State University, Nacogdoches, Texas. I am looking forward to working with Dr. Moon and the exciting program he has selected for this year's group.

This year the All State Orchestra audition recording deadline is September 19, 2014. I need ALL audition CDs post marked by September 19th. Any audition recordings which are not submitted on time will not be accepted. (As per our discussion in Baton Rouge, audition recordings are to be in a CD format.) The audition requirements are published in the LMEA Handbook and can be found online at the following link: <http://www.lmeamusic.org/Handbook/PDF/LMEA%20Handbook%202010-12%20Orchestra%20All-State.pdf>. We are currently using SET III for this year's audition.

Send all audition recordings and fees to:
Katrice LaCour
LMEA Orchestra Division Chair
748 Coco Bed Rd.
Cloutierville, LA 71416

Please check with your District Director or online for this year's audition form and note the tryout fee is still \$12.00. Again, I remind you, the audition recording deadline is September 19, 2014. The All State Orchestra dates are Friday, Saturday and Sunday November 21 – 23, 2014. I wish your students success as they try out for this year's All State and look forward to seeing you in Baton Rouge at the LMEA Conference.

Elementary Division Chairman *Michele White*



As I write this article, I am sitting in a beautiful beach house, gazing at the Atlantic Ocean off the coast of North Carolina's Outer Banks, and ruminating on the circumstances that brought me here. Through a mixture of life choices during the past 36 years, I am at a family reunion of my ex-husband's side of the family. Everyone who has been part of this half of my family since 1978 – and the memories of those who have passed on – in addition to the extended members of my niece and her husband's families, have been enjoying a few days of reminiscing, sharing, and caring for one another. Both of my adult children are here along with my widowed-ex and his three children from his second marriage, and it has been a wonderful respite from the usual summer activities I enjoy.

In much the same way, I am reflecting on the many years I have taught, the successes and failures, the highs and the lows, and I realize that I am indeed fortunate to have had so many different experiences with so many colleagues, students, administrators, parents, and others who have influenced my teaching methods and practices.

Likewise, I am thinking about my tenure as elementary chair of Louisiana Music Educators Association. Through the last 12 or so years, we have worked hard to plan and schedule many clinicians for our annual LMEA conference, which is held every November. I am remembering some incredible sessions I've attended, what I've learned, all of the "tools" that are now in my toolbox because of these gifted music educators, and I am thankful that I have been able to learn from and share with such a variety of colleagues.

This year's conference will be as captivating as ever. We are fortunate to have Denise Gagne, Canadian music educator and owner of Themes and Variations, as our main clinician. Mrs. Gagne is a certified specialist in both Orff and Kodály techniques. She will be presenting eight fantastic sessions, and each one of them promises to be informative and interesting; the sessions will be a mix of pre-k through 2nd classroom ideas, 3rd through 6th musical activities, and a reading session of reproducible choral music available for free. Many of you have requested that we bring Denise to LMEA, and this is the year!!

Daniel Todd, a middle-school music educator/choral director from Texas,

will be the LAKE-sponsored clinician this year. Dr. Todd will be presenting sessions on choral music for upper elementary and middle school choirs, and he will be teaching us how to successfully teach part music to our singers.

Sarah Bartolome from LSU will once again be with us and will present – in what is becoming a tradition – a session of folk-dancing on Thursday afternoon. This year, however, Dr. Bartolome will be focusing on Cajun folksongs and dances to use in the classroom.

We are lucky to have three new presenters at LMEA this year. Brandon Blaylock from Zachary Community Schools will provide a session titled, "Music Literacy Games: What Bob Barker Can Teach Us About Teaching."

Also, Charlotte Mizener from Lamar University will present "Getting to the Core of English Language Arts Through Music", and Chris Murphy of Quaver Music will answer the question, "Do Recorders and Technology Play Well in the Classroom?"

The elementary portion of the conference begins on Thursday afternoon at 3 o'clock. Now is the time to request professional development by showing your principal the sessions on technology, literacy, and English language arts, as well as all the sessions that Denise Gagne will provide including reproducible choral music (that means free to you and your school!), centers in the music classroom, Dollar Store Diva – Or Musical Manipulatives which will give us ideas on apps and digital resources, in addition to many other assessment ideas and activities for the music classroom.

Our conference is an invaluable resource for elementary and middle school music teachers. Chart your year to make the most of your time in the classroom by planning ahead so you can devote Thursday, Friday, and Saturday morning – November 20, 21, and 22 – to the amazing learning opportunities available to you right here in the state of Louisiana! You have plenty of time to find a roommate, book a room, and attend sessions and clinics that will help you and your students. You owe it to yourself!

Claim a blessed year!!

Public Relations President Carolyn Herrington

This year's conference is going to be great but it's even greater when YOU come! Once again we will have a full house in the exhibit hall with vendors from all over. We will be having some of our vendors stay thru Monday so remember to bring your PO numbers so you can shop. I'm inviting you now to be our guest in the exhibit hall and visit all the exhibitors that are coming there for you.

The colleges will be back again exhibit in the atrium outside the ballrooms. We are looking forward to a fantastic conference – so put us on your calendar today! Hope to see you soon.



Collegiate MENC Chairman Ed McClellan

As we begin a new school year, it is exciting to see the energy in many music classrooms! Many marching programs have already been up and running since late July. As the school year is well underway, music learning is taking place in music classrooms across Louisiana. The Collegiate Division has many ongoing initiatives that benefit high school music students, college music education students, and new and veteran music teachers across Louisiana. Please mark your calendar and plan to participate!

Future Music Educator's Day **Wednesday, November 12, 2014**

As Louisiana State Chair of the Society of Music Teacher Education and NAFME Collegiate Division State Chair of LMEA, I would like to extend an invitation to you and your students to participate in the *Future Music Educator's Day* at Loyola University New Orleans on November 12, 2014.

Realizing that our students will be the future of the music education profession, this event is an attempt to expose high school junior and senior music students to a career in music education by following an assigned student mentor through a "Day-in-the-life-of" a music education student. Future Music Educator's Day is more of recruitment for the profession than for any one institution. It is a full day of activities that provides insight into the music teaching profession.

You as well as your students can get further information and register for this year's

Future Music Educator's Day at www.loyno.edu/futuremusiceducators
2014 Future Music Educator's Day Schedule

8:00 a.m.	Registration
8:30 a.m.	Rotate between Music/Music Education sessions
10:30 a.m.	So you want to be a Music Teacher
11:00 a.m.	Preparing to be a Music Major in College
11:30 a.m.	Rotate between Music Education Methods Classes
12:30 p.m.	Lunch
1:30 p.m.	Question/Answer Session with Music Students
2:30 p.m.	Visit Ensemble Rehearsals
3:30 p.m.	Departure

Last year's Collegiate Summit had great success with expressed appreciation by its participants. The 2014 LMEA Conference Collegiate Summit will have a very full schedule of professional development sessions for college students, and beginning and veteran music teachers across the state. Please mark your calendar and plan to take part in the following sessions. Collegiate and general member participation will ensure another productive and prosperous year!

The LMEA Conference Collegiate Summit **Sunday, November 23 - Monday, November 24**

The NAFME Collegiate Summit is a collaborative effort among the Louisiana Music Educators Association, university faculty, K-12 music educators, and retired music teachers to focus on the needs of undergraduate music education majors and beginning music teachers. **A few of the 2014 sessions will include:**

- **President's Roundtable Presentation on Music Program Recruitment and Retention**
- **Effective Pedagogy & Instruction Strategies in the Performance-Based Classroom**
- **Building a String Program in Your School**

- **The Job Search Process and Interviewing for a Teaching Position**
- **Interactive Band and Music Class Teaching Demonstrations**
- **Best Practices of Beginning & Maintaining Your NAFME Collegiate Chapter**
- **Literature Selection: Choosing Music of Depth and Substance**
- **Ten Ways to Maximize Your Student Teaching Experience**
- **Panel Discussions by New Teachers on Issues of the Music Teaching Profession**
- **Networking Sessions for Collegiate NAFME Members and New Music Teachers**

NAFME Collegiate Chapter Members, College Students, Beginning (i.e., 0-5 years) and Veteran Music Teachers will find these professional development sessions informative.

Pre-Registration Rates

Collegiate Music Education Summit Participants should take advantage of "early" conference pre-registration rates in planning to take part in this event. LMEA Conference "Pre-registration" for Collegiate Members is \$15; Pre-registration forms are available on the LMEA website (<http://www.lmeamusic.org/convention.html>).

Sixth Annual Music Teacher Education Luncheon **Sunday, November 23**

12:00 p.m. Noon

Music Education Faculty at colleges and universities across the state are invited to attend this informal luncheon banquet and meeting as part of the LMEA Conference. This social gathering of Music Teacher Educators is an opportunity to connect with other professionals, develop collegiality, exchange ideas, share in common practices, and examine ways to enhance music teacher training programs in Louisiana.

Research Presentation Session

Sunday, November 23

4:00 p.m.

The Louisiana Music Educators Association is pleased to announce a call for research reports for presentation at a Research Poster Session at the LMEA Conference on November 23, 2014. University faculty, graduate students, and classroom music educators are invited to submit proposals for presentation during this session. Authors whose reports are selected will present their research during a research poster session in which interested music educators can learn about the research and discuss applications to music teaching and learning with the authors.

In Closing

I look forward to working with you in the coming school year! Your support and involvement in the professional development of undergraduate music education majors, beginning and veteran music teachers makes a difference in future excellence in music education throughout Louisiana. Please contact me should I be of assistance to you!

Ed McClellan

Mary Freeman Wisdom Distinguished Professor of Music

Loyola University New Orleans

Phone: 504-865-2085

Email: emcclell@loyno.edu



University Division Chairman *Jay Jacobs*



On behalf of the great universities across the state, I am once again happy to welcome everyone to an exciting new academic year! As our annual LMEA conference approaches, we invite you to join us for a series of outstanding university concerts. This year, student and faculty musicians from Louisiana Tech will be featured throughout the conference. Please check the conference program for performance times and enjoy these spectacular choir, jazz, wind ensemble and faculty showcase concerts! As always, the faculty members at our great state universities are hoping to connect with you this year. If we can provide assistance to you and/or your students, we are happy to help. Have a wonderful year. We hope to hear from you AND see you on campus!

LBA President *Nanci Smith*

It is exciting to begin a new year! I would like to thank the entire LBA board and membership for working together to provide a unique and exceptional experience for our students in the 2014 Junior High All-Star and High School Jazz Band performances. The team of conductors and students presented an extraordinary concert! My heartfelt thanks is also expressed to the numerous directors who volunteered their time and efforts to move chairs and equipment, judge chair auditions, monitor rehearsals, and help with all the other little things that pop up.

The Music Department at University of Louisiana, Lafayette deserves many thanks as well for providing a home for the All-Star Bands. Thanks to the music faculty and staff who have patiently and graciously helped with everything we have asked for and allowed us to make ourselves at home.

Hopefully you have recovered from an awesome summer break and are ready for an exciting new school year. While you are preparing for the beginning of this school year, I would like to encourage those who are not members of LBA to consider joining us. Membership is valid from January 2014 thru January 2015. Membership continues to increase over the past few years in part because LBA provides an awesome venue for improving and promoting music programs in Louisiana through the summer All-Star Bands. LBA also provides a common meeting ground for the exchange of ideas and methods within an environment of professionalism, friendliness, and fellowship. If you are interested in joining us, check our web site – www.labandmasters.org for an application and mailing instructions. Better still, we would like to meet you personally. Please come introduce yourself at the LBA general membership meeting as part of the LMEA Conference this fall.

All band directors who are current LMEA members should receive the 2015 All-Star nomination forms for Junior High and High School Jazz Band early next semester. If you do not receive the information by early February, please visit our web site - www.labandmasters.org. Honor band information and audition materials can be found on the website, as well as contact information for board members who will be happy to assist you if needed.

The 2015 All-Star Bands will rehearse Monday and Tuesday, June 1 – 2, 2015, in Angelle Hall on the campus of University of Louisiana, Lafayette. LBA is one of the only showcases for our middle school students at the state level and the educational experience continues to be of great value for all. Mark your calendar! I look forward to seeing all of you! Please feel free to contact me with concerns and suggestions for next year's All-Star Clinic!

Nanci Smith
(985) 384-5922 - Morgan City Junior High School
nsmith@stmarty.k12.la.us

LAKE President *Sheila Rae Manning*



Greetings! What a great 2014 Choir Festival we had in May. The choirs were great and the Mass Choir concert was awesome under the direction of Peggy Lee Fletcher. LAKE has had a busy 2013--2014 and now is preparing for great things for the coming year. Our website is in the reconstruction phase and should be up and running soon. Our website can be found at www.lakeducators.org -- thanks to Jarrod Richey for his design and content.

We will begin this school year with a Workshop on Saturday, September 6, 2014 with clinicians Casey Doucet and Megan Voorhies. The focus of this workshop is on technology and the LAKE music which will be embedded in the workshop. In November, LAKE is sponsoring Daniel Todd during the LMEA Conference. He will present three sessions during this conference.

The sessions are:

- Songs and Games for the Development of Part Work Skills
- How to Teach a Choral Song
- Reading Session: Developing Part Work Through the Choral Ensemble

During the November meeting, LAKE will have their annual meeting and elections. Please make plans to attend this meeting during the conference. We are very interested in you and your input to help our organization grow. Looking forward in seeing you there. At this time the Winter Workshop is still in the planning stages. Our last function is the LAKE Choir Festival. This will be held on Friday, April 24, 2015 at Guinn Auditorium on the Louisiana College Campus in Pineville, Louisiana. This is a time for choirs to come and perform individually and with a mass choir. The Clinician will be Jarrod Richey from West Monroe. Music for the event will be available by August.

Please contact LAKE with any ideas you may have for workshops or ways in which LAKE can help you. I hope you have a great year in 2014-2015.

LASTA President *Michelle Wilkinson-Nelson*



Calling All String Teachers!

The American String Teachers Association (ASTA) is a national organization geared toward all types of string teachers whether they work as private teachers or public school teachers, teach at the elementary school level or at the collegiate level, Suzuki Method or an alternative style. ASTA's goal is to support teachers through networking and bringing new ideas to music education.

LASTA is the Louisiana chapter of ASTA. We are working hard to become active again. Our first goal is to build a network of string teachers within the state. LASTA also plans on sponsoring events such as new music reading sessions, and workshops teaching Louisiana style fiddling, improvisation, reading music charts, music technology and other skills 21st century string players need to have in order to work as a professional. Mark Wood, a founding member of the Trans-Siberian Orchestra and developer of Electrify Your Strings will be in Baton Rouge November 6-8. Mark has offered to spend time talking to teachers when he is here. Other performers are also interested in meeting and sharing with teachers when they come.

Whether or not you are interested in joining ASTA, please email me with your name, home address, cell phone number, email address and what type of teaching you specialize in. Questions and suggestions for activities and workshops are very welcomed! If interested in joining LASTA go to the ASTA website and register there. Annual fees for ASTA are \$105. They then turn a portion of that back to LASTA for our events. If you send us your contact information, periodic notifications of LASTA activities will be sent out to everybody who responds!

Michelle Wilkinson-Nelson
LASTA President
Mwn6861@aol.com

LAJE President Patrick Sheng

Greetings from the LAJE! We're looking forward to the coming 2014/2015 school year, as well as the upcoming LMEA Conference. Here are a few important items you'll want to know for your jazz students and ensembles this year:

- **LMEA All State Jazz Band Auditions – The audition process has changed this year!** Auditions will be recorded at the district level by LMEA and LAJE district directors, and submitted to Lee Hicks, the LMEA Jazz Division Chairman. For more information and the recording dates in your district, visit lajemusic.com and contact your district director.
- **LMEA All State Jazz Band** – This year we're excited to have **Jerry Tolson** from the University of Louisville as our guest director!
- **LAJE State Jazz Festival** – This year's state jazz festival will take place at **Southeastern Louisiana University**, under the direction of Paul Frechou (Paul.Frechou@selu.edu) on April 23-24, 2015.

I would also like to introduce and welcome our new LAJE President, **B.J. McGibney**! B.J. is entering his 19th year as a music teacher in the East Baton Rouge Parish Talented Music Program, and has been an active member of the LAJE board. He can be contacted at WMcGibney@ebprss.k12.la.us.

As always, I encourage ensemble directors at all levels to include jazz in their curriculum as part of a well-rounded music education for our Louisiana students. Feel free to contact any of the LAJE officers/clinicians at lajemusic.com for assistance with your jazz program.



District I Greg A. Oden



It has been a very busy summer for many of the directors of District 1. We have welcomed new young musicians to our families, welcomed new directors into our midst, and spent hours on buses trying to spread the love of music far and wide. Congratulations on all of your successes.

Now is the time to begin looking to the challenges we have facing us in the upcoming school year. There are a few dates I wish to emphasize. They are as follows:

LMEA Round 1 Vocal Auditions on September 20th, at the West Monroe High School Music Building. The audition fee will be \$12.00 cash and will begin at 8:00 a.m. LMEA Round 1 Band Auditions will be on September 27th, at the West Monroe High School Music Building. The audition fee will be \$12.00 cash and will begin with registration at 12:00 p.m.

I am constantly amazed at the level of professionalism you exhibit and the care and dedication you have to the students of District 1. Keep up the good work and have a great year.

Greg A. Oden
District 1 Director

Calendar:

September 20, 2014
September 27, 2014
TBA
November 8, 2014
March 23 – 27, 2015
April 18, 2015 Spring

Round 1 Audition – Vocal
Round 1 Audition – Band
Round 1 Audition – Strings
Fall Solo & Ensemble Festival
Large Ensemble Festival – All
Solo & Ensemble Festival

WMHS
WMHS
ULM
OPHS
WOHS
WOHS

District III Brett Babineaux



Throughout the course of my first year as District Director, I was constantly amazed at the amount of hard work and passion the LMEA Board possesses. The constant desire to be progressive while still maintaining valued traditions and supporting our state music programs with their own growth and excellence is refreshing and exciting. I am certainly looking forward to the upcoming year!

Information related to any district or LMEA events will be posted on your respective District III websites: instrumental <http://www.slbda.org/> and vocal district3choir.org. This information will include dates, locations, schedules, entry forms, and all other information needed for District III events. This issue of the Louisiana Musician also includes entry forms and the calendar of events for this school year. Please mark your calendars and adhere to all deadlines. Please be mindful of any changes that are made to state forms. Using the most current forms will eliminate confusion and help us all stay organized. I would like to encourage everyone to make the best of our profession by attending clinics that are available locally and especially the LMEA Convention in November. There are great sessions for all levels of music education.

A special acknowledgment should be given to UL-Lafayette's Composer-in-Residence, Dr. Quincy Hilliard and FJH Music for sponsoring a reading session this past summer in Lafayette led by William Owens. Likewise, thanks to Lafayette Music Co. and Presonus for being there to showcase the newest in technology as it relates to the music ed. classroom.

Congratulations to all of the success that you achieved last year. May we all choose not to rest on past accolades, but rather raise our expectations. One thing I have learned about teaching young people...YES...They Can!!

If you have any questions or if I can be of any service to you, please don't hesitate to contact me at:

Email: bababineaux@lpssonline.com

phone: 337-224-0271

School address: Broussard Middle School

1325 S. Morgan Ave.
Broussard, La. 70518

District IV Richard Bresowar



Greetings from District IV. I trust everyone has had a nice summer and is by this time working your way back to the routine of school.

The dates for all district events are up on the district website and of course are also in the back of this issue. As before our website is www.districtiv.org or you can simply go to www.lmeamusic.org and click on District IV.

If you are new to the district and have not done so, please send me an email at Richard.bresowar@apbs.org as soon as you can so that I may put you on the District email list. I will email announcements regarding district events. Be aware that some systems like to bounce group emails, so the safest way to stay up to date is to check the websites. Vocal people may also wish to email Steve Galliano to get on his Vocal email list. His email is sgalliano@catholichigh.org.

Congratulations to those of you that are in new jobs this year. We have a large number of changes and I would like to welcome any new teachers in our area to District IV. I hope that all music teachers will join us and be an active part of LMEA. If you have problems or questions, please call me or someone in your area that is experienced. If you are experienced, please try to help new teachers in your area to be aware of what they are supposed to do. My number is 225-405-7234.

This year District Vocal Large Ensemble MPA will again be held at First

Baptist Church downtown. Dana Lux will chair again, and will need a helper. Okemah Crawford has retired and is not well. Please keep her in your thoughts and prayers.

Instrumental Large Ensemble MPA will be at The Episcopal School for Middle Schools this year. This will be held on March 24-25. High School MPA will be at Baton Rouge High on March 26-27. Thanks to Paul Taranto and Bobby Campo for agreeing to host.

I want to encourage all of us to be aware of what is going on in our profession, attend conferences, and be enthusiastic about our great profession. Especially, please consider attending our LMEA convention in November. I would really like to see a bigger delegation attending the convention from our District this year. Have a great year.

Richard Bresowar
LMEA District IV Director
Band Director, Dutchtown Middle School

District V

Sharon Stephenson



Welcome back, everyone! We start again—each year is a clean slate and we decide what gets written on it. I hope everyone enjoyed the summer break—whether you relaxed, vacationed, or attended classes and workshops.

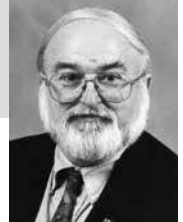
Now we are back to the jobs we all enjoy—making music with our students. We have proven that we can be successful, juggling all the tasks assigned to us. Dates for all district and state events are in the back of this issue. They will also be available on the LMEA website. Check this site and the district links often for coming events and deadlines.

Anna Lou Babin and Bruce Lambert will be in charge of District Vocal and Instrumental Large and Small Ensemble Assessment Events. Submit entry forms to them. They are also the music mentors for the Calcasieu Parish teachers. Attend your district meetings. Randy Sanchez is the president for the instrumental group and Patrick Van Zile is president of the vocal group. Check the calendar for the dates and locations. Enjoy sharing with your co-workers at the meetings. Also plan to attend the LMEA convention in November. There are many activities available for all teachers.

If I can be of assistance to anyone, e-mail me at sharon.stephenson@cpsb.org, or call me at 337-625-8917 (home), or 337-274-2769 (cell). Thanks for all you do. Have a wonderful year!

District VI

Guy C. Wood



Welcome back to the start of another school year! I wrote the following words in a column four years ago and my feelings have not changed. I would like to repeat them. "If you are a first-year teacher, welcome to the best profession on earth! Can you think of anything better to be giving youngsters than the gift of music? Our job is really a calling. There will probably be a few trying times this year when you will have to ask yourself why you decided on this profession, but just watching the kids' faces after they give an emotional and rewarding musical performance will give you the answer quickly! If the time should ever come when you are no longer excited about what you're doing, it's time to find another profession. You can easily find one more financially rewarding, but you'll never find one more satisfying. Welcome to the brotherhood of music educators!"

Mike Orkus will again serve this year as District VI Band Directors Association President and Kathryn Claverie will once again be serving as Director of the District VI Choral Directors Association. Our deep appreciation goes out to both of these dedicated music educators. Many thanks also go to the following District VI members who have volunteered to serve as chairmen for our various events for 2013-14. Chairing the band events again this year are: Dominick Caronna, All-State; Brenda Castillo and Randy Weaver, District Marching Festival; Katie Antis and Shari Meyer, Middle School/Jr. High Honor Band; Mike Genevay, Sr. High Honor Jazz Ensemble and All-Star Middle School Jazz Band; Guy Wood, Solo & Ensemble Assessment; and Randy Weaver, Large Ensemble Assessment. We also want to recognize Karl Hymel, District BDA Vice-President, for all of his hard work.

Chairing the choir events again this year are Cheryl Dupont, All-State & Sr. High Honor Chorus, Melissa Brocato, Youth Honor Choir; Louise LaBruyere, Solo & Ensemble Assessment; and Kathryn Claverie and Kevin Caparotta, Large Ensemble Assessment. These members have been giving their time and energy to the students in District VI for many years and are to be commended for their dedication and sacrifice. Please tell them "thank you" next time you see them!

At the back of this issue, you will find the 2013-14 Calendar of Events. Keep this magazine in a safe place so you can refer to it the entire year! It lists the deadlines and dates of all our district events, as well as every other LMEA event in the state. Several entry forms are also included. Of course, if you ever forget, the LMEA Website is www.lmeamusic.org.

I wish you the best of luck with the new school year. If you ever have any questions or need to speak with me, you can reach me at 504-340-6727, extension 234. Have a great year!



"The Friendly Music Store"

3700 Johnston St. * Lafayette LA 70503

Phone: (337) 984-3700

Toll Free: (800) 999-1625



Stanbury
UNIFORMS

WILL GREEN

Louisiana Representative

Cell: (337) 277-7791

musicmanwg@yahoo.com



**YAMAHA • KING • SELMER-BACH • LUDWIG • GEMEINHART
LEBLANC-HOLTON • BOOSEY & HAWKES • PEARL • PREMIER • CONN
BUFFET • JUPITER • ROSS • DINKLES • DIRECTOR'S SHOWCASE • STYLE PLUS**

District VIII Carol Lupton



By the time you read this school will be in full swing. The beginning of school is always our signal that summer is over and it sure seems to me that summer gets shorter every year. With each "New School Year" we all have the opportunity to begin again and to grow as teachers with the knowledge and experiences from previous years.

The All State Jazz Ensemble will have recorded Auditions this year. While the All State Orchestra has had recorded auditions for several years this is something new for the students who wish to audition for the Jazz Ensemble. Auditions for both the All State Orchestra and the All State Jazz Ensemble will be held on September 12th at Caddo Magnet High School from 3:30 – 5:30.

Our First Round All State / Wind Symphony auditions will be September 19th at Benton High School. This is an on sight registration and registration times will be emailed to you prior to the audition date. First Round Choir auditions will be held at Caddo Magnet High School. Please contact Jennifer Jackson for more information concerning this audition.

I would also like to thank Elaine Webb, Tom Stone, Jennifer Jackson, Evan McCormick and Ted Beagley for their help with the First Round Auditions.

Take time now to familiarize yourself with dates and deadlines for various other events on the LMEA Calendar. Scheduling is always smoother when entry forms are received in a timely manner. While I do not like to nag, I have made it a goal of mine to email reminders at the beginning of each month, I hope they will be helpful.

If you have any questions or if I can be of any assistance to you or your students please do not hesitate to call. My bandroom number, should you need be during the school day, is (318) 364 – 1799. My best wishes to you and your students for a successful school year.

District IX Neal Naquin



Welcome back! I hope everybody had a great summer. I would like to begin by thanking Sharon for all the work she put in this summer on our district website. The new address is www.lmesdistrict9.org. The site looks great and is easy to use. As you go through the new site, please email Sharon or me if you find anything that needs to be corrected. The website has the latest calendar information for our district. Please refer to it often and stay ahead of all the upcoming deadlines.

Our calendar is controlled to a great degree by the state's standardized testing schedule. As the testing windows get larger and more spread out, we are finding fewer opportunities to schedule events in the spring like parish and district festival. In St. Tammany Parish, we have been given 3 days (March 25-27) to host our Parish and District Large Ensemble Assessments. The principals will be asked by the central office not to schedule testing during those days to allow for our students to attend the events. That is a big change from past years, but it may prove to be the best solution at this time.

District directors from across the state have been meeting and discussing the possibility of having regional sites for State Assessment. The real bonus for having regional sites would be to reduce travel cost and make the event accessible to more schools. Scheduling around testing will certainly be a major concern if at all possible. I will updating you with the progress of Regional State Assessments at our local meetings.

As the new year begins, I would ask that each of you take the time to contact any new members to our profession that are in your area. Please pass on to them the district website so that they can get up to date with all that is going on. It is also a great opportunity for you to help a newbie get comfortable with a new job and/or start a career. Helping each other is one of the things which make our profession so great. If you are a newbie, please be sure to email me so that I can get you on the email list for information updates throughout the year.

If you have any questions or concerns, please contact me. I am looking forward to working with everyone to make this a positive experience for all our students.

"Growing through Giving"

The Biggest Piano Event in the World

All Spring –
– Enroll Early

**Guild Auditions provide
milestones from year to year
as measurements of progress**

Sponsored by
the Largest
Organization of
Piano Teachers
in the World



Audition participation
and absence from school
APPROVED BY
TEXAS EDUCATION
AGENCY

National Guild of Piano Teachers

Teachers Division of
American College of Musicians
Founded in 1929 by Iri Allison
International Headquarters
P.O. Box 1807
Austin, Texas 78767 U.S.A.

I am interested in joining the Piano Guild. Please send
me more information about membership and
Guild Goals.

MR.
MRS.
MISS

(PRINT OR TYPE NAME AND ADDRESS)

ADDRESS

CITY

STATE

ZIP



McNeese State University™

BANDS



Band service awards / scholarships are available to students regardless of academic major



Upcoming Premier Events:

All-Star High School Marching Band Day
September 13, 2014

Showdown/Sulphur Marching Festival
November 1, 2014 • 4pm

Regional High School Honor Band
February 27-28, 2015

Visit Us at: www.mcneesebands.com



@McNeeseBands



McNeeseStateUniversityBands



McNeesebands.com



DEBOSE

**National Piano
Competition, Op. 41**

April 24-College/April 25-PreCollege

Solo ~ Duet Performance

P.O. Box 64614

Baton Rouge, LA 70896

www.debosenationalpianocompetition.org

debosefestival@aol.com

LOUISIANA MUSIC EDUCATORS AWARDS

Official Suppliers For • LMEA Medals

Contact:

Bruce Lambert

P.O. Box 12046, Lake Charles 70612

Phone: 337/436-5099

DISTRICT FESTIVAL MEDALS

Medals with PURPLE Ribbons (Superior in Concert)

_____ @ \$2.25 each \$ _____

Medals with WHITE Ribbons (Superior in Sight Reading)

_____ @ \$2.25 each \$ _____

Medals with RED, WHITE & BLUE Ribbons (Sweepstakes)

_____ @ \$2.25 each \$ _____

STATE FESTIVAL MEDALS

Medals with GREEN & WHITE Ribbons (Superior at State Festival)

_____ @ \$2.25 each \$ _____

Sub Total \$ _____

(\$8.00 for 1-50 Medals, \$16.00 for 51-100 Medals, \$24.00 for 101-150 Medals) Shipping \$ _____

TOTAL including Shipping \$ _____

Payment enclosed \$ _____

Ship To: _____
Name Title

School Name: _____ Phone Number _____

Street Address: _____

City: _____ State: _____ Zip: _____

ALL SHORTAGES AND DAMAGED MERCHANDISE SHOULD BE REPORTED IMMEDIATELY

Vendors who are interested in receiving information concerning the providing of services to LMEA in the area of T-shirt sales, photography, and/or recording should contact:

Bruce Lambert

Executive Secretary, LMEA

P.O. Box 12046

Lake Charles, LA 70612

34TH ANNUAL
SULPHUR MARCHING FESTIVAL
MCNEESE SHOWDOWN AT SUNDOWN
SATURDAY, NOVEMBER 1, 2014
COWBOY STADIUM, MCNEESE STATE UNIVERSITY
LAKE CHARLES, LOUISIANA

TROPHIES ARE AWARDED FOR ALL SUPERIOR PERFORMANCES
(BANDS, MUSIC, VISUAL, GE, PERCUSSION, COLOR GUARD AND DRUM MAJORS)

IN ADDITION, THE FOLLOWING SPECIAL AWARDS WILL BE PRESENTED:

- BEST MUSIC, VISUAL, GE, PERCUSSION, COLOR GUARD, AND DRUM MAJOR IN EACH CLASSIFICATION
- MOST OUTSTANDING OF THE DAY MUSIC, VISUAL, GE, PERCUSSION, COLOR GUARD, AND DRUM MAJOR
- BOB SWEENEY DISTRICT V AWARD
- THE DON NASSAR HARMONIOUS AWARD
- 4TH RUNNER-UP TO FESTIVAL GRAND CHAMPION
- 3RD RUNNER-UP TO FESTIVAL GRAND CHAMPION
- 2ND RUNNER-UP TO FESTIVAL GRAND CHAMPION
- 1ST RUNNER-UP TO FESTIVAL GRAND CHAMPION
- 2014 FESTIVAL GRAND CHAMPION

Entry Fee is \$275

Classifications based on winds & marching percussion numbers:

A: 1-40 / 2A: 41-70 / 3A: 71-99 / 4A: 100+

Entry forms will be emailed to participating bands in early September

RSVP via email to: JJacobs@mcneese.edu

LMEA Annual State Conference 2014

November 20-24, 2014

Crowne Plaza Hotel, Baton Rouge, LA

Hotel Reservation – Crowne Plaza Hotel

- Reservations must be made **between October 13, 2014 and November 1, 2014**, in order to ensure this price. *Hotel registration form for downloading available on LMEA website October 13, 2014.*
- For reservations, call 1-225-930-0174 or 1-225-930-0130. Identify yourself as an LMEA member/participant when making reservations. Price is \$89.00+tax per room. (The Embassy Suites is also available at \$129+tax per room.)
- LMEA Members and All-State students must make their own reservations.
- 250 rooms are reserved in the Crowne Plaza Hotel for LMEA Conference participants. After November 1, 2014, these rooms may not be available and prices are subject to change.

Reminders:

- Wait until All-State auditions are complete to reserve rooms, and then reserve only the number of rooms that you need.
- Please make an effort to reserve a minimum number of rooms for all-state participants by encouraging all-state participants to share a room when feasible.
- Make your reservation for the exact number of nights you plan to stay. Booking of extra unused nights may limit the rooms available for others.
- You must register at the Conference in order to attend clinics and/or visit exhibits.

Conference Program schedule:

Available online (lmeamusic.org) and in *The Louisiana Musician* (November).

All-State schedules:

Provided to All-State participants upon their selection.

Conference Registration Deadlines

Directors of All-State Students: October 17, 2014

Directors must include COPIES of the pre-registration form and pre-registration check with All-State forms to the Division Chairman to which the student's forms are sent. (*Division chairmen will not process the All-State forms without having COPIES of the director's pre-registration form AND pre-registration check.*)

All other LMEA Members: November 14, 2014

Pre-registration form is available on the next page and at www.lmeamusic.org.

LMEA 2014 Conference Pre-Registration

Deadlines:

Directors of All-State Students: October 17, 2014

Directors must include COPIES of the pre-registration form and pre-registration check with All-State forms to the Division Chairman to which the student's forms are sent. (*Division chairmen will not process the All-State forms without having COPIES of the director's pre-registration form AND pre-registration check.*)

All other LMEA Members: November 14, 2014

Name _____

School _____ LMEA District _____

Email address _____

School Address _____

Phone _____

Rank your areas of interest, beginning with your most important teaching area as #1.

☐ Elementary ☐ Vocal ☐ Band ☐ Jazz ☐ Orchestra

☐ Music Supervision/Administration ☐ Music Teacher Education ☐ Other

LMEA Member Pre-Registration = \$60

LMEA Member Registration at Conference = \$75

Retired LMEA Members = no registration fee

Collegiate Student Member Fee = \$15

-----Make Check Payable to LMEA

Mail to:

Sara Bidner

5840 Glen Cove Drive

Baton Rouge, LA 70809

If you are eligible for a 25-year membership pin, please enclose the LMEA 25 Year Service Pin form.

LMEA 25 Year Service Pin

Deadline for Service Pin Notification: Postmarked November 14, 2014

LMEA will present a 25 year service pin to any member who has completed 25 years of active membership in NAFME/LMEA. In order to receive the pin, you must complete this form and enclose it with your registration.

Pins will be presented prior to the All-State Choir Performance on Saturday, November 22, 2014, or at the All-State Concert Band Concert on Monday, November 24, 2014.

Name _____

Address _____

Phone _____

E-mail address _____

Years/Dates of Membership _____ to _____

Concert at which you prefer to receive your 25-year pin (please check):

☐ All-State Choir Concert, Saturday, November 22, 3:15 p.m.

☐ All-State Concert Band Concert, Monday, November 24, 2:00 p.m.

Send completed form to:

Sara Bidner

5840 Glen Cove Drive

Baton Rouge, LA 70809

2014-2015 Calendar of Events

Event Date	District	Event	Site	Chairman	Entry Deadline/Time
8/5/14	IV	District Vocal Meeting	Catholic High	Steve Galliano	6:00 p.m.
8/11/14	II	LMEA District Meeting	Pineville High	Johnny Walker	
8/11/14	VII	District Band Director Meeting	Nicholls State Bandroom	Jim Trant	7:00 p.m.
8/16/14	IX	District Vocal Director Meeting	Fontainebleau High	Paula Vickers	6:30 p.m.
8/18/14	VII	District Choir Director Meeting	Nicholls State - Talbot	TBA	6:15 p.m.
8/19/14	VIII	District Fall Meeting	Rusheon Middle	Carol Lupton	6:30 p.m.
8/23/14	STATE	LAKE Fall Workshop	TBA	TBA	
8/25/14	IX	Instrumental Director Meeting	Fontainebleau High	Neal Naquin	6:00 p.m.
8/26/14	V	Band Director Meeting	Ryans, L. C. Ryan St.	Randy Sanchez	7:00 p.m.
8/26/14	V	VMTO Meeting	F. K. White Middle	Patrick Van Zile	4:45 p.m.
8/26/14	VI	District Instrumental Meeting #1	Holy Cross	Guy Wood	
8/29/14	V	High School Honor Band Entry Deadline		Aaron Theall	
8/29/14	IX	Registration Deadline 1 st Round All-State and District Honor Choir		Nathan Sumrall	
8/29/14	IX	Registration Deadline All-State Jazz		Lee Hicks	
TBA	I	First Round String Audition Strings	ULM	Greg Oden	
9/1/14	VI	Registration Deadline Instrumental 1 st Round			
9/2/14	V	First Round All-State Vocal Rehearsal	Barbe High	Chris Miller	6:00 p.m.
9/2/14	VI	District Vocal Meeting	St. Martin's School	Guy Wood	6:30 p.m.
9/5/14	IX	Registration Deadline All-State String 1 st Round		Neal Naquin	
9/5/14	IX	Registration Deadline All-State Band 1 st Round		Rossi DeBenedetto	
9/8/14	STATE	ACDA All-State Choir Audition Deadline	TBA	TBA	
9/8/14	III	SLBDA District Meeting	Cathedral-Carmel	Jude Gaspard	6:30 p.m.
9/8/14	VII	Deadline for District Marching Festival Entry		Jim Trant	
9/8/14	VII	District Band Director Meeting	Nicholls State Bandroom	Jim Trant	7:00 p.m.
9/9/14	III	First Round Vocal All-State Auditions	Lafayette High	Breaux/Broussard	
9/9/14	V	First Round All-State Vocal Rehearsal	Barbe High	Chris Miller	6:00 p.m.
9/9/14	IX	All-State Jazz Band Auditions	Fontainebleau High	Jennifer Pulling	4 p.m. 8/29/14
9/10/14	VIII	LMEA Orchestra Audition Recording	Caddo Magnet High	Elaine Webb	3:30-5:30 p.m.
9/12/14	VIII	LMEA Jazz Ensemble Audition Recording	Caddo Magnet High	Tom Stone	9/24/14
9/12/14	VII	First Round Vocal All-State Auditions	H. L. Bourgeois	TBA	9 a.m. - 4 p.m.
9/13/14	IV	Instrumental Meeting	Dutchtown Middle	Richard Bresowar	6:30 p.m.
9/15/14	II	First Round Orchestra	Pineville High	TBA	
9/16/14	V	First Round All-State Vocal Rehearsal	Barbe High	Chris Miller	6:00 p.m.
9/16/14	IX	First Round All-State String Auditions	Covington High	Neal Naquin	4 p.m. 9/5/14
9/17/14	IX	Registration Deadline Elem and Jr Hi Choir Audition		Vickers/McLain	
9/20/14	I	First Round Vocal All-State Auditions	West Monroe High	Greg Oden	
9/20/14	II	First Round All-State Band Auditions	Tioga Jr. High	Johnny Walker	9/5/14
9/20/14	IV	First Round Vocal Auditions	Catholic High	Steve Galliano	9/12/14
9/20/14	IV	First Round Wind/Percussion All-State Auditions	Dutchtown High	Richard Bresowar	
9/20/14	V	First Round All-State Vocal Auditions	Barbe High	Chris Miller	8:00 p.m.
9/20/14	VI	First Round Vocal All-State Auditions	Brother Martin	TBA	
9/20/14	VII	LMBC Preview of Champions Marching Festival	Vandebilt High	TBA	
9/20/14	VIII	First Round Vocal All-State Auditions (Honor Choir)	Caddo Magnet High	Jennifer Jackson	

9/20/14	IX	First Round Vocal All-State/Sr. High Choir Audition	S. L. U.	Nathan Sumrall	8/29/14
9/20/14	IX	First Round All-State Band Auditions	S. L. U.	DiBenedetto	9/5/14
9/23/14	V	Second Round All-State Vocal Rehearsal	Barbe High	Chris Miller	6-7:30 p.m.
9/23/14	VII	Bayouland Choral Clinic	Nicholls State	TBA	
9/24/14	VII	First Round Vocal All-State Auditions	H. L. Bourgeois High	Jim Trant	3:15 p.m.
9/24/14	VII	First Round Instr. All-State/Sr. H. Honor Auditions	H. L. Bourgeois High	Jim Trant	3:30 p.m.
9/27/14	I	First Round Instrumental All-State Auditions	West Monroe High	Greg Oden	
9/27/14	II	First Round Vocal Auditions	Pineville High	TBA	
9/27/14	III	First Round Instrumental All-State Auditions	Carencro High	Keith Rogers	8:00 a.m.
9/27/14	III	Bandoree Marching Band Performance	Lafayette High	Scotty Walker	6:00 p.m.
9/27/14	V	First Round Instrumental All-State – HS Honor Band	Barbe High	Randy Sanchez	
9/27/14	VI	First Round Instrumental All State Auditions	Brother Martin High	TBA	
9/27/14	VII	LMBC Fete de Musique Marching Festival	C. Lafourche High	TBA	
9/27/14	VIII	First Round Inst. All-State/District VIII Wind Ens.	Benton High	Carol Lupton	
9/27/14	IX	Fee Deadline for 2 nd Round All-State	Fontainebleau High	Neal Naquin	9 a.m. – noon
9/27/14	IX	Vocal Help Session Choir (2 nd Round)	Barbe High	Ashley Lemmier	6-7:30 p.m.
9/30/14	V	Second Round All-State Vocal Rehearsal		Chris Miller	
10/1/14	VI	Deadline for Marching Band Festival Registration and Membership	Crowne Plaza B. Rouge	Sharon McNamara-Horne	10:00 a.m.
10/4/14	STATE	LMEA Board Meeting	Kaplan High	Beaux Trahan	9/5/14
10/4/14	III	Vermilion Parish Marching Festival	Pickering High	Roland Smith	
10/4/14	V	Pickering Marching Festival	Destrehan High	TBA	
10/4/14	VII	LMBC Destrehan Marching Festival	ULL Angelle Hall	Breaux/Broussard	7:00 p.m.
10/6/14	III	High School Honor Choir Performance	Nicholls Bandroom	TBA	7:00 p.m.
10/6/14	VII	Band Directors' Meeting	Barbe High	Chris Miller	6-7:30 p.m.
10/7/14	V	Second Round All-State Vocal Rehearsal	Sam Houston	Randy Sanchez	7:00 p.m.
11/7/14	V	District Band Director Meeting	UNO	Guy Wood	
10/7/14	VI	Instrumental District Meeting #2			
10/7/14	VII	Honor Band Chairpersons' Meeting	H. L. Bourgeois High	TBA	6:15 p.m.
10/11/14	STATE	2 nd Round All-State Auditions	Pineville High	Sharon McNamara-Horne	
10/11/14	III	Delcambre Marching Festival	Delcambre High	Neil Simon	9/11/14
10/18/14	II	District Honor Choir Jr. High Auditions	Tioga High	TBA	
10/18/14	V	DeRidder Marching Festival	DeRidder High School	Carolyn Herrington	
10/18/14	V	District Middle School Honor Chorus Auditions	F. K. White Middle	Sharon Stephenson	8:00 a.m.
10/18/14	VII	LMBC Terrebonne Marching Festival	Terrebonne High School	TBA	
10/18/14	VII	Morgan City "Tiger Classics" Marching Festival	Morgan City	TBA	
10/18/14	IX	Jr. High District Honor Choir Auditions	Fontainebleau Jr.	Becky McLain	9/19/14
10/18/14	IX	Elementary District Honor Choir Auditions	Fontainebleau Jr.	Paula Vickers	9/19/14
10/20/14	III	SLBDA District Marching Festival	ULL Cajun Field	Jude Gaspard	9/2014
10/23-25/14	STATE	LA ACDA Fall Vocal Conference	Crowne Plaza on Canal	Anthony Sears	
10/25/14	V	LaGrange Marching Festival	LaGrange High School	Neil Quinn	
10/28/14	II	District II Marching Band Assessment	Louisiana College	Johnny Walker	
10/28/14	V	VMTD Meeting – Dues now \$25	F. K. White Middle	Patrick Van Zile	4:45 p.m.
10/28/14	VII	District VII Marching Band Assessment	Nicholls State University	Jim Trant	10/31/14
10/31/14	IX	All District Honor Choir Fees and Forms Due	McNeese State	Honor Chair	
11/1/14	V	Sulphur/McNeese Marching Festival	Barbe High	Jacobs/McMillen	
11/1/14	V	High School Honor Chorus Auditions		Chris Miller	8:30 a.m.

11/1/14	LMBC	La. State Marching Band Circuit Championship	SLU	TBA	
11/1/14	VI	All Honor Bands Registration Deadline			
11/1/14	VII	Jr. and Sr. District Honor Choir Auditions	H. L. Bourgeois	TBA	9 a.m. – 4:00 p.m.
11/3/14	VI	Marching Band Assessment	East Jefferson	TBA	
11/3/14	VII	Choral Director Meeting	Nicholls Talbot Hall	TBA	6:15 p.m.
11/3/14	VII	Band Directors' Meeting	Nicholls Bandroom	TBA	7:00 p.m.
11/4/14	VIII	District Marching Band Festival	Benton High	Carol Lupton	10/4/14
11/6/14	III	Elem/Middle Choir Solo and Ensemble Assessment	EA Martin Middle	Carter/Richardson/Dugas	10/6/14
11/8/14	I	Fall Solo and Ensemble Music Assessment	OPHS	Greg Oden	
11/8/14	III	Louisiana Showcase of Marching Bands	ULL Cajun Field	Lafayette Music	10/10/14
11/10/14	VI	Alternate Rain Date District Marching Assessment	TBA		
11/11/14	IV	District IV Honor Band Meeting	St. Amant High	Joseph Nassar	6:30 p.m.
11/12/14	IX	St. Tammany Parish Honor Band Auditions	Covington High	Neal Naquin	10/24/14
11/13/14	III	Elem/Middle School Honor Choir Auditions	TBA	Wiltz/Lavergue	
11/14-15/14	III	Middle School Honor Band Auditions	Broussard Middle	Babineaux/Leblanc	10/17/14
11/14/14	VIII	CDA Honor Choir (Clinic and Concert)	Broadmoor Baptist	Jennifer Jackson	
11/15/14	IX	Registration Deadline District Honor Band Audition		Honor Band Chairs	
11/17/14	IX	St. Tammany Parish Honor Band Rehearsal	Covington High	DiBenedetto/Gambino	6:00-8:30 p.m.
11/18/14	IX	St. Tammany Parish Honor Band Rehearsal/Concert	Covington High	DiBenedetto/Gambino	9 a.m. & 7:00 p.m.
11/19/14	VI	District Youth and Senior Honor Choir Auditions	Newman School	TBA	
11/20-24/14	STATE	LMEA State Music Conference and All-State	Crowne Plaza B. Rouge	Sharon McNamara-Horne	
12/2/14	V	District Band Director Meeting	Sam Houston High	Randy Sanchez	7:00 p.m.
12/5/14	VII	Nicholls State Instrumental Sightreading Clinic	Nicholls State University	TBA	9:00 a.m.
12/5/14	VII	Vocal Solo and Small Ensemble Music Assessment	H. L. Bourgeois	TBA	
12/6/14	III	Elementary Honor Band Auditions	Maurice Elementary	Kaye Broussard	11/7/14
12/6/14	VII	Junior High Honor Band Auditions	E. D. White High	TBA	8:00 a.m.
12/6/14	VII	All-Youth Honor Band Auditions	St. Joseph Elementary	TBA	8:00 a.m.
12/8/14	VII	Band Directors' Meeting	Nicholls Bandroom	TBA	7:00 p.m.
12/10/14	V	Middle School Honor Band Entry Deadline		Eva Brown	
12/13/14	III	High School Honor Band Auditions	Lafayette High	Scotty Walker	11/14/14
12/13/14	IV	Honor Band Auditions	East Ascension	Joseph Nassar	11/11/14
12/13/154	VI	Honor Band Auditions	Holy Cross	TBA	
12/13/14	IX	Jr. High District Honor Band Auditions	Monteleone Jr. High	Caitlyn Lancaster	8:30 a.m.
12/13/14	IX	Sr. High District Honor Band Auditions	Lakeshore High	Jessica Lizana	12 noon
12/19/14	IX	Registration Deadline Honor Jazz Band Auditions		Hicks/Sambola	
1/3/15	STATE	LMEA Board Meeting	Crowne Plaza B. Rouge	Sharon McNamara-Horne	10:00 a.m.
1/5/15	VII	Choir Directors' Meeting	Nicholls Talbot Hall	TBA	6:15 p.m.
1/5/15	VII	Band Directors' Meeting	Nicholls Bandroom	TBA	7:00 p.m.
1/6/15	V	VMTO Meeting	LaGrange Choir Room	Patrick Van Zile	4:45 p.m.
1/6/15	VI	District Meeting #3	UNO	Guy Wood	
1/8/15	II	Rapides Parish Jr. High Honor Band Auditions	Pineville Jr. High	TBA	
1/8-10/15	III	Middle School Honor Band Activities	ULL Angelle Hall	Babineaux/LeBlanc/Broussard	
1/10/15	STATE	LAKE Winter Workshop	TBA	TBA	
1/10/15	V	Middle School Honor Band Auditions	S. J. Welsh Middle	Randy Sanchez	12/11/14
1/10/15	V	Band Director Meeting (Pledge Sheets/Jazz Fees)	S. J. Welsh Middle	Randy Sanchez	12 noon
1/10/15	VIII	District Middle and High Honor Band Auditions	Cope Middle	Aymor/Hand	12/10/14

IX	1/10/15	District Senior and Jr. Honor Jazz Band Auditions	Fontainebleau High	Hicks/Sambola	9 a.m. 12/11/14
II	1/13/15	High School Parish Honor Band Auditions	Tioga High	TBA	
III	1/13/15	Elem/Middle School Honor Choir Activities	First Baptist Lafayette	Wiltz/Lavergne	
IV	1/13/15	District MS Honor Band Rehearsal	TBA	Joseph Nassar	6:30-8:30 p.m.
V	1/13/15	High School Honor Chorus Rehearsal	LaGrange High	Chris Miller	6-7:30 p.m.
IV	1/15-17/15	District IV Honor Band Weekend and Concert	SELU	Joseph Nassar	districtiv.org
VI	1/16-18/15	Concert Honor Band Rehearsals and Concert	Tulane		
II	1/17/15	District II Honor Band Auditions	Tioga Jr. High	TBA	
V	1/17/15	District Jazz Honor Band Auditions	TBA	McMillen	1/10/15
VII	1/17/15	District Honor Band Concert	H. L. Bourgeois	TBA	2:00 p.m.
V	1/20/15	High School Honor Chorus Rehearsal	LaGrange	Chris Miller	6:00 p.m.
V	1/20/15	Middle School Honor Chorus Rehearsal	W. W. Lewis Middle	Sharon Stephenson	6-7:30p.m.
VI	1/13/15	Youth and Senior Honor Choir Rehearsal	Loyola	TBA	
VI	1/18/15	Youth and Senior Honor Choir Rehearsal	Loyola	TBA	
VI	1/20/15	Youth and Senior Honor Choir Rehearsal	Loyola	TBA	
VII	1/20/15	Deadline (Postmark) for Large Ensemble Assessment Entry		TBA	
VIII	1/20/15	District H. S. Honor Band Reading Rehearsal	Parkway High	Chris Hand	
III	1/22-24/15	High School Honor Band Activities	ULL Angelle Hall	Scotty Walker	
VIII	1/22-24/15	District High Honor Band Rehearsal and Concert	Parkway High	Chris Hand	
II	1/23-24/15	Rapides Parish Honor Band Clinic and Concert	Peabody Magnet	TBA	
VI	1/23/15	Youth and Senior Honor Choir Rehearsal	Loyola	TBA	
VI	1/24/15	Youth and Senior Honor Choir Rehearsal	Loyola	TBA	
IX	1/24/15	District Honor Band Concerts	S. L. U.	Sr. Lizana/Jr. Lancaster	9:30 a.m.
IX	1/24/15	Instrumental Director Meeting	S. L. U.	Neal Naquin	
VI	1/25/15	Youth and Senior Honor Choir Performance	Tempe Sinai	TBA	
III	1/27/15	High School Solo and Ensemble Assessment	TBA	Fran Hebert	
V	1/27/15	Middle School Honor Chorus Rehearsal	W. W. Lewis Middle	Sharon Stephenson	6-7:30 p.m.
V	1/28/15	Vocal Solo and Music Assessment Entry Deadline	TBA	Anna Lou Babin	
IX	1/28/15	Registration Deadline Vocal Solo and Ensemble		Lemmier/Sumrall	
III	1/29-31/15	Vermillion Parish Honor Band	Fontana-Mayard Center	Madelaine DeHart	3:30 p.m.
V	1/29/15	Elementary Honor Chorus Rehearsal	LCBA Choir Room		
VIII	1/29/15	District BDA M. S. Honor Bands Reading Rehearsal	Byrd High	Lea Aymor	
II	1/30-31/15	District Honor Band Clinic	Bolton High	TBA	
II	1/30-31/15	District Honor Choir	Pineville High	TBA	
V	1/30-31/15	District Honor Band Rehearsals and Concert	MSU H.S./LaGrange M.S	Randy Sanchez	1/10/15
VIII	1/30-31/15	District M. S. Honor Bands Rehearsal and Concert	Byrd High	Lea Aymor	
IX	1/30/15	District Honor Jazz Band Concerts	Fontainebleau High	Lee Hicks	3 p.m.
IX	1/31/15	Vocal Directors' Meeting	Ponchatoula High	Paula Vickers	10:00 a.m.
IX	1/31/15	District Honor Choir Concert	Ponchatoula High	Stephanie Robertson	1:00 p.m.
V	2/1-28/15	Instrumental Solo and Ensemble Assessments	TBA	Bruce Lambert	TBA
VI	2/15-3/15	Instrumental Solo and Ensemble Assessment	Various Sites	TBA	
VI	2/2/15	Deadline Jazz Honor Bands Entry Forms			
VII	2/2/15	Band Directors' Meeting	Nicholls Bandroom	TBA	7:00 p.m.
V	2/3/15	VMTO Meeting	F. K. White Middle	Patrick Van Zile	4:45 p.m.
V	2/5/15	Honor Chorus Elem/Middle Rehearsals	LCBA	TBA	3:30 & 6:00 p.m.
V	2/5/15	Honor Chorus High School Re-Audition & Rehearsal	McNeese Bulber Aud.	TBA	5:00 & 6:00 p.m.

2/6/15	V	Honor Chorus Elem/Middle Rehearsals	LCBA	TBA	8:00 a.m.
2/6/15	V	Honor Chorus High School Rehearsal	McNeese Bulber Aud.	TBA	8:00 a.m.
2/7/15	V	District Honor Choir Rehearsals and Concerts	McNeese State	TBA	
2/7/15	VII	District Honor Choirs Concert	H. L. Bourgeois	TBA	1 and 2 p.m.
2/9/15	III	SLBDA District Meeting	Cathedral-Carmel	Jude Gaspard	6:30 p.m.
2/10/15	V	District Band Director Meeting	Sam Houston	Randy Sanchez	7:00 p.m.
2/11/15	VI	District Vocal Solo and Ensemble Assessment	Various Sites	TBA	
2/11/15	IX	Vocal Solo and Small Ensemble Assessment	Fontainebleau High	Ashley Lemmier	1/28/15
2/11/15	IX	Vocal Solo and Small Ensemble Assessment	Northshore High	Nathan Sumrall	1/28/15
2/21/15	II	District Solo and Ensemble Assessment	Alexandria Sr. High	TBA	
2/21/15	VIII	District Solo and Ensemble Assessment #1	Caddo Magnet High	Carol Lupton	1/21/15
2/24/15	II	District Vocal Solo and Ensemble Assessment	Emmanuel Baptist	TBA	
2/25/15	V	Instrumental Large Ensemble Entry Deadline	TBA	Bruce Lambert	
2/25/15	V	Vocal Large Ensemble Entry Deadline	TBA	Anna Lou Babin	
2/25/15	VIII	Orchestra Large Ensemble Assessment	Southwood High	Carol Lupton	1/25/15
2/27/15	IX	Registration Deadline Choral Large Ensemble	Sulphur High 9 th Campus	Neal Naquin	
2/28/15	V	District Vocal Solo and Ensemble Assessment	Lewis Middle/Barbe High	Anna Lou Babin	
2/28/15	V	District Jazz Honor Band Rehearsal and Concert	Haynes Academy	McMillan	
2/28/15	VI	Jazz Honor Band Audition		TBA	
3/2/15	VI	Instrumental Large Ensemble Assessment Registration Deadline			
3/2/15	VII	Choral Director Meeting	Nicholls Talbot Hall	TBA	6:15 p.m.
3/2/15	VII	Band Directors' Meeting	Nicholls Bandroom	TBA	7:00 p.m.
3/3/15	V	VMTO	F. K. White Middle	Patrick Van Zile	4:45 p.m.
3/4-6/15	VII	Vocal Large Ensemble Assessment	C. Lafourche High	Jim Trant	
3/5-6/15	VIII	Vocal Large Ensemble Assessment	TBA	Carol Lupton	2/5/15
3/6-8/15	VI	Honor Jazz Rehearsals and Concert	TBA	TBA	
3/9-10/15	III	Vocal Large Ensemble Assessment	ULL Angelle Hall	Fran Hebert	2/6/15
3/9-12/15	VII	Instrumental Large Ensemble Assessment	C. Lafourche High	Jim Trant	
3/10-12/15	IV	Vocal Large Ensemble Assessment MPA	First Baptist Church	Dana Lux	2/2/15
3/10/15	V	District Band Director Meeting	Sam Houston High	Randy Sanchez	7:00 p.m.
3/10/15	VI	Instrumental District Meeting #4	UNO	Guy Wood	
3/11-13/15	III	Instrumental Large Ensemble Assessment	ULL Angelle Hall	Brett Babineaux	2/13/15
3/18-20/15	STATE	National OAKE Convention	TBA	TBA	
3/19-21/15	VII	Solo and Ensemble Assessment – 1 st Round	TBA	TBA	
3/20/15	II	LC Cenla District Music Rally	Louisiana College	TBA	
3/23-27/15	I	All Large Ensemble Music Assessment	WOHS	Greg Oden	
3/24-25/15	II	Band/Orchestra Large Ensemble Assessment	Pineville High	TBA	
3/24-25/15	IV	Instrumental Middle School Large Ensemble MPA	Episcopal School	Richard Bresowar	2/13/15
3/24-26/15	VI	Instrumental Large Ensemble Assessment	Belle Chasse	Guy Wood	
3/25-26/15	V	Vocal Large Ensemble Assessment	LCB Academy	Anna Lou Babin	2/25/15
3/25-27/15	V	Instrumental Large Ensemble Assessment	LC Civic Center	Bruce Lambert	2/25/15
3/25-27/15	VIII	Band Large Ensemble Assessment	Airline High	Carol Lupton	2/25/15
3/25/15	IX	Vocal Large Ensemble Assessment	Fontainebleau High	Naquin/Lemmier	2/27/15
3/26/15	II	Vocal Large Ensemble Assessment	Peabody Magnet	TBA	
3/26-27/15	IV	Instrumental High School Large Ensemble MPA	Baton Rouge High	Richard Bresowar	2/13/15
3/26-27/15	IX	Instrumental Large Ensemble Assessment	Fontainebleau High	Naquin/Hicks	2/27/15

3/27/15	VI	Vocal Large Ensemble Assessment	UNO	Guy Wood	
3/30/15	II	Rapides Parish Honor Orchestra Auditions	Pineville High	TBA	
3/31-4/2/15	III	Louisiana Concert Band Invitational	Bayou Church Lafayette	Walker/Babineaux/Ashhurst	
4/1/15	STATE	Entry Deadline for LMEA State Large Ensemble Assessment		Bruce Lambert	
4/1/15	STATE	Entry Deadline for State Solo Assessment		Bruce Lambert	
4/4/15	II	District String Solo and Ensemble Assessment	Pineville Jr. High	TBA	6:15 p.m.
4/6/15	VII	Choral Directors' Meeting	Nicholls Talbot Hall	TBA	7:00 p.m.
4/6/15	VII	Band Directors' Meeting	Nicholls Bandroom	TBA	
4/13/15	IX	Vocal Directors Meeting (food provided)	Fontainebleau Jr. High	Paula Vickers	6:30 p.m.
4/14/15	V	VMTO	F. K. White Middle	Patrick Van Zile	4:45 p.m.
4/14/15	V	District Band Director Meeting – Sweeny Audition	Sam Houston High	Randy Sanchez	7:00 p.m.
4/18/15	I	Spring Solo and Ensemble Assessment	WOHS	Greg Oden	
4/18/15	IV	Baton Rouge Beginner Honor Band	Sherwood Middle	Bardie Roberts	TBA
4/23-25/15	VII	Solo and Ensemble Dates 2 nd Round	TBA	TBA	
4/25/15	STATE	LSU State Music Rally	LSU Baton Rouge	Staff	
4/27/15	STATE	State Orchestra Performance Assessment	ULL Angelle Hall	Bruce Lambert	4/1/15
4/28-30/15	STATE	State High School Band Performance Assessment	ULL Angelle Hall	Bruce Lambert	4/1/15
4/28-30/15	STATE	State Choir Performance Assessment	Lake Charles Civic Center	Bruce Lambert	4/1/15
5/1/15	STATE	Additional day (if needed) for State H.S. Band Assmt.	ULL Angelle Hall	Bruce Lambert	4/1/15
5/1/15	STATE	Additional day (if needed) for State Choir Assmt.	Lake Charles Civic Center	Bruce Lambert	4/1/15
5/1-2/15	II	Rapides Honor Orchestra	Pineville High	TBA	
5/2/15	VIII	District Solo and Ensemble Assessment #2	Greenacres Middle	Carol Lupton	4/2/15
5/2/15	STATE	State Solo Assessment	UL Lafayette	Bruce Lambert	4/1/15
5/4/15	VII	CDA Meeting	TBA	TBA	6:00 p.m.
5/5-7/15	STATE	State Elem/Middle School/Jr. High Band Assessment	Lake Charles Civic Center	Bruce Lambert	4/1/15
5/11/15	VII	Band Directors' Meeting	Nicholls Bandroom	TBA	7:00 p.m.
5/12/15	VI	District Vocal Meeting	McGehee School	Guy Wood	6:30 p.m.
5/19/15	VI	Instrumental District Meeting #5	UNO	Guy Wood	
5/18/15	IX	Band Director Meeting	Fontainebleau High	Neal Naquin	6:00 p.m.
5/19/15	V	VMTO	Casa Manana	Patrick Van Zile	5:00 p.m.
5/19/15	VIII	District Spring Meeting	Byrd High	Carol Lupton	6:30 p.m.
5/23/15	STATE	LMEA Board Meeting	Crowne Plaza B. Rouge	Sharon McNamara-Horne	10:00 a.m.
6/1-2/15	STATE	LBA Middle School All-Star Band Activities	ULL Angelle hall	Smith/Rogers	
6/1-2/15	STATE	LBA Middle School All-Star Jazz Band Activities	ULL Angelle hall	Smith/Rogers	

LOUISIANA MUSIC EDUCATORS ASSOCIATION

ALL-STATE JAZZ ENSEMBLE
REGISTRATION FORM 2014-2015

Name _____
PRINT!!!! Last First Middle

Instrument _____ Present Grade _____

School _____

Student or Parent email address (optional) _____

Please indicate your preference of ensembles, should you be selected to participate in more than one of this year's Louisiana All-State groups.

CHECK ONE: _____ All-State Jazz _____ All-State Orchestra
_____ All-State Band _____ All-State Choir

Director must attach a photocopy of LMEA/NAfME Membership Card.

Director (Print) _____

Director Signature _____

School Address _____

(City, State, Zip Code)

Band Email _____

School Phone () _____ HOME () _____

LMEA District _____ La. Parish _____

Student information for internal LMEA audition purposes. Information will not be shared without specific parental permission obtained upon student's selection to an LMEA all-state group.

Parent Signature _____

Principal Signature _____

Send all Registration Forms, Audition Recordings and Fees to:

Lee Hicks
LMEA Jazz Chairman
Fontainebleau High School
100 Bulldog Drive
Mandeville, LA 70471

**THIS FORM, AUDITION RECORDING, AND \$12 FEE MUST BE POSTMARKED BY
SEPTEMBER 19, 2014**

Checks made out to LMEA. Please send School Check, Booster Club Check, Money Order, or Cashier Check.

**LOUISIANA MUSIC EDUCATORS ASSOCIATION
ALL-STATE ORCHESTRA AUDITION REGISTRATION FORM**

THE DEADLINE TO SUBMIT ALL AUDITION MATERIALS IS SEPTEMBER 19, 2014

PRINT NEATLY

Student Name _____
Last First Middle Initial

Your Instrument _____

String Bass Students: Please indicate your preference of ensembles, should you be selected to participate in more than one of this year's Louisiana All-State groups.

CHECK ONE: ☐ All-State Orchestra ☐ All-State Band
 ☐ All-State Jazz ☐ All-State Choir

School _____ Grade in School _____

Director (Sponsor) _____

Sponsor's School Address _____
Street/P.O. Box

City _____ Zip _____

School Phone () _____ Home/Cell Phone () _____

Student information for internal LMEA audition purposes. Information will not be shared without specific parental permission obtained upon student's selection to an LMEA all-state group.

Parent Signature _____

Principal Signature _____

Director's (Sponsor's) Signature _____

Director/Sponsor must attach a photocopy of LMEA/NAfME Membership Card.

Send all Registration Forms, Audition Recordings and Fees to:

Katrice LaCour
LMEA Orchestra Division Chair
748 Coco Bed Rd.
Cloutierville, LA 71416

REMEMBER, POSTMARK DEADLINE TO SUBMIT ALL AUDITION MATERIALS IS SEPTEMBER 19, 2014

Note: If there is no orchestra program at your school, provide the name, address, and phone number of your LMEA-member sponsor in the above spaces. Sponsors must be members of LMEA.

DON'T FORGET TO INCLUDE THE \$12.00 REGISTRATION FEE WITH THIS FORM

Checks made out to LMEA. Please send School Check, Booster Club Check, Money Order, or Cashier Check.

LOUISIANA MUSIC EDUCATORS ASSOCIATION

SOLO AND SMALL ENSEMBLE MUSIC PERFORMANCE ASSESSMENT

OFFICIAL ENTRY FORM 2014-2015

DIRECTORS TAKE NOTE: LMEA SUPPORTS 100% THE LAWS REGARDING THE DUPLICATION OF SCORES. ANY INFRACTION BY THE DUPLICATION OF SCORES WITHOUT THE WRITTEN PERMISSION FROM THE PUBLISHER WILL RESULT IN THE DISQUALIFICATION OF THE PARTICIPANT. No refund after schedule has been set. Late fee of \$50.00 if postmarked or hand delivered after deadline. ENTRIES are NOT ACCEPTED after the performance schedule is set.

Only teachers who are members of LMEA or non-members who pay the \$150.00 non-member fee may enter this event.

School _____	Music Director's Name _____
School Address _____	Home Address _____
City Zip _____	City Zip _____
Phone (____) _____	Home Phone/Cell _____
Bandhall/Choir Room/Office Number (please circle one)	Email Address _____

YOU MUST ATTACH A PHOTOCOPY OF YOUR LMEA/NAfME MEMBERSHIP CARD

Small Ensembles

SMALL ENSEMBLE: NO MORE THAN EIGHTEEN (18) STUDENTS PER ENSEMBLE, EXCLUDING ACCOMPANIST.

Name of Ensemble	No. in Ens.	Name of Ensemble	No. in Ens.
1		13	
2		14	
3		15	
4		16	
5		17	
6		18	
7		19	
8		20	
9		21	
10		22	
11		23	
12		24	

Soloist

Student's Name	Inst. or Voice	Student's Name	Inst. or Voice
1		23	
2		24	
3		25	
4		26	
5		27	
6		28	
7		29	
8		30	
9		31	
10		32	
11		33	
12		34	
13		35	
14		36	
15		37	
16		38	
17		39	
18		40	
19		41	
20		42	
21		43	
22		44	

IF INSTRUMENT, GIVE TYPE, I.E. FLUTE, VIOLIN, ETC. IF VOICE, GIVE TYPE, I.E. SOPRANO, TENOR, ETC.

FEES: THE FOLLOWING FEES ARE ENCLOSED

_____ Students in Small Ens. @\$5.00 per ensemble member\$_____

_____ Soloist @ \$5.00 each \$_____

_____ \$150.00 non-member fee if applicable \$_____

_____ \$50.00 late fee if postmarked after deadline \$_____

_____ \$5.00 student conductor fee if applicable \$_____

TOTAL FEES ENCLOSED \$_____

CERTIFICATION:

This is to certify that the students in this organization are all bona fide students of this school and meet requirements for participation.

School Principal

Director

NAfME ID NO.

Expires

**LOUISIANA MUSIC EDUCATORS ASSOCIATION
STATE SOLO MUSIC PERFORMANCE ASSESSMENT
OFFICAL ENTRY FORM 2014-2015**

DIRECTORS TAKE NOTE: LMEA SUPPORTS 100% THELAW REGARDING THE DUPLICATION OF SCORES. ANY INFRACTION W ITHOUT THE WRITTEN PERMISSION FROM THE PUBLISHER WILL RUSULT IN THE DISQUALIFICATION OF THE PARTICIPANT.

ENTRY DEADLINE: APRIL 1, 2015

NO REFUND AFTER SCHEDULE HAS BEEN SET. LATE FEE OF \$50.00 IF POSTMARKED OR HAND DELIVERED AFTER DEADLINE. SCHEDULE AND GENERAL INFORMATION WILL BE PLACED ON THE LMEA WEBSITE (lmeamusic.org).

SCHEDULE WILL BE AVAILABLE ON THE WEBSITE BY APRIL 15, 2015. **MAIL TO: LMEA STATE SOLO MUSIC PERFORMANCE ASSESSMENT, P.O. BOX 12046, LAKE CHARLES, LA 70612**

GENERAL INFORMATION:

DATE: SATURDAY, MAY 2, 2015

ENTRY DEADLINE: APRIL 1, 2015

SITE: University of Louisiana Lafayette

COST: \$20.00 PER SOLO (checks payable to: LMEA)

AWARDS: GOLD MEDAL – (All performing soloists will receive a State Solo Patch)

STUDENT ELIGIBLITY – INSTRUMENTAL

1. All students must be a member of the band at their school. If there is no band program at the school, students may be submitted by an LMEA member.
2. High school students must play a solo from the Texas Prescribed Music List (PML) level one or level two. Middle/Elementary school students must play a solo From the Texas PML level one, two or three.
3. Students are eligible for one solo on an instrument.
4. All solos with piano accompaniment must be performed with the accompaniment. (Smart music, CD, etc. is acceptable.) (CD, etc. – piano part only)
5. Memorization is NOT required.
6. High School soloists are allotted 8 minutes. Middle school soloists – 6 minutes.

STUDENT ELIGIBILITY – VOCAL

1. All students must be a member of the choir at their school. If there is no choir program at the school, students may be submitted by an LMEA member.
2. High school students must sing a solo from the Texas Prescribed Music List (PML) – any level. Middle/Elementary school students are not eligible.
3. Students are eligible for one solo.
4. All solos with piano accompaniment must be performed with the accompaniment. (Smart music, CD, etc. is acceptable.) (CD, etc. – piano part only)
5. Memorization IS REQUIRED.
6. Vocal soloists are allotted 6 minutes.

Please note: LMEA high recommends live accompaniments. A piano will be in each performance site. Students using Smart Music, CDs etc. must provide ALL equipment. Students must set up, perform and take down all equipment in the allotted time. Solos (requiring an accompaniment) performed without accompaniment, for any reason will receive comments only. Performance times will be strictly enforced.

LMEA STATE SOLO MUSIC PERFORMANCE ASSESSMENT

School _____ Director' Name _____

Address _____ Home Address _____

City, Zip _____ City, Zip _____

Phone () _____ Home Phone/Cell () _____

Only teachers are members of LMEA or non-members who pay the \$150 non-member fee may enter this event.

YOU MUST ATTACH A PHOTOCOPY OF YOUR LMEA/NAfME MEMBERSHIP CARD

	Student's Name	Inst./Voice	Grade	Title/Composer	UIL# Required
1					
2					
3					
4					
5					
6					
7					
8					
9					
10					
11					
12					
13					
14					

_____ Soloist @ \$20.00 each \$ _____

_____ \$150 non-member fee (if applicable) \$ _____

_____ \$50 late fee (if postmarked after April 1) \$ _____

TOTAL FEES ENCLOSED \$ _____

NAfME # _____ Expires _____

CERTIFICATION:

This is to certify that the students in this organization are all bonafide members of this school and meet all requirements for participation.

School Principal

Director

**LOUISIANA MUSIC EDUCATORS ASSOCIATION
LARGE ENSEMBLE MUSIC PERFORMANCE ASSESSMENT
OFFICIAL ENTRY FORM 2014-2015**

DIRECTORS TAKE NOTE: LMEA supports 100% the laws regarding the duplication of scores. Any infraction by the duplication of scores without written permission from the publisher will result in the disqualification of the participant. Additionally, only teachers who are members of LMEA or non-members who pay a \$150.00 Non-member Fee may enter this event. No refunds after schedule has been set. Late fee of \$50.00 if postmarked or hand delivered after deadline. ENTRIES are NOT ACCEPTED after the performance schedule is set.

Check One: Band _____ Wind Ensemble _____ Full Orchestra _____ String Orchestra _____ Choir _____

Name of Organization: _____

School Name: _____

School Address: _____

_____ (City, State, Zip)

Band Hall/Choir Room/Office Phone (circle the correct one) _____

LMEA Classification _____ School Enrollment _____ Number in Group _____ Grades Represented: Lowest _____ Highest _____

Director's Name _____ Home/Cell Phone _____

Email Address _____

NAfME ID NUMBER _____ EXPIRATION DATE _____ (Attach photocopy of NAfME /LMEA membership card.)

Order of Music to be performed (Specify required number with a *) (Time: minutes/seconds expected in performance of selection)

Selection	Composer	Time
-----------	----------	------

1. _____	_____	_____
----------	-------	-------

2. _____	_____	_____
----------	-------	-------

3. _____	_____	_____
----------	-------	-------

If the *LMEA Handbook* states your class must perform a "required number", list below the source and page number.

Source _____	Page _____	Voicing for sight reading _____
--------------	------------	---------------------------------

Name of Accompanist _____

STUDENT CONDUCTOR'S NAME _____ (limited to one per ensemble)

MUSIC TO BE PERFORMED _____

FEES: The following fees are enclosed :	_____ Students at \$2.75 each (minimum of \$150.00 per group)	\$ _____
	_____ Recording Fee if applicable	\$ _____
	_____ Student Conductor Fee (\$5.00)	\$ _____
	_____ Non-member fee (\$150.00)	\$ _____
	_____ Late fee if postmarked after deadline (\$50.00)	\$ _____
	Total Fees enclosed	\$ _____

ENTRIES are NOT ACCEPTED after the performance schedule is set. NO REFUNDS after the performance schedule is set.

Certification: This is to certify that the students in this organization are all bona fide students of this school and meet all requirements for participation in the Large Ensemble Festival. **You must attach a photocopy of your NAfME/LMEA card.**

SCHOOL PRINCIPAL'S SIGNATURE _____

DIRECTOR'S SIGNATURE _____

Title	Voicing	Composer/Arrg.	Octavo No.	Publisher
All to Saints Be Joyful	SATB	Katherine Davis	R-3328	Warner Bros.
Alleluia	SAC	Mozart/Ehret	M979124	Cambiata Press
Alleluia! Sing Praise	SATB	Bach	CM 7140	C. Fischer
An Appalachian Lament	AACB	James McCray	EA 355	European American
Ave Verum	SSCB	Mozart/Lyle	M-17552	Cambiata Press
Ave Verum	3 Part	Mozart/Eilers-Bacak	402-01020	Jenson
Blessed Is The Man	SACB	Eugene Butler	C-97203	Cambiata Press
Blow in the Mind Southerly	SATB	M. S. Vance	No. 2168	Balwin
Cantata Domino	SATB	Pitoni/Grayson	B 201871-358	Bourne
Cast Thy Burden	SACB	Mendelssohn/Farrell	M-980143	Cambiata Press
Christus Resurrexit	SATB	Gordon Young	A-5009	Shawnee Press
Colorado Trail	SACB	American Folk/Lyle	U-17316	Cambiata Press
Early One Morning	SATB	N. Cain	332-15147	T. Presser Co.
Gloria	SSCB	Vivaldi/Collins	M-117207	Cambiata Press
Good Day, Dear Heart	SATB	di Lasso	No. 416	E. C. Schirmer
Holy Is The Lord	SATB	Schubert/Gregory		Broadman Press
Hosanna	SA/SSCB	C. Geger/Lyle	M-979135	Cambiata Press
O Jesu, Joy of Man's Desiring	SATB	Bach	A-5019	Flammer
Jubilata Deo	SATB	Gordon Young	A-857	Shawnee
Kyrie Eleison	SAC	Arr. Ashton	C979125	Cambiata Press
May Day Carol	SATB	Eng. Folk/M. S. Vance	No. 2022	Belwin
Miserere Mei	SATB	Lotti/Ehret & Wilson	No. 1938	Bossey & Hawk
O Bella Fusa	SATB	di Lasso	No. 11338	G. Schirmer
O Occhi Manza Mia	SATB	di Lasso	No. 1146	E. C. Schirmer
O Savior, Hear Me	SAC(B)	von Gluck/Taylor	M-17672	Cambiata Press
Rest In The Lord	SATB	Nelhybel	OC7-3	Christopher M.
Sanctus & Hosanna	SATB	Mozart/J. McCray	EA-393	European American
Sing A Song To The Lord	SSCB	Theron Kirk	C-978107	Cambiata Press
Sing Joyous Christians	SATB	Lotti	98-1456	Concordia
Sing of Love & Peace, Alleluia!	SAC(B)	Carol Jacobe	C-180141	Cambiata Press
Sing, Sing A Song For Me	SATB	Vecchi	ES53	Grayson-Bourne
Sing To His Name For He Is Grace	SAC(B)	Eugene Butler	C-17429	Cambiata Press
Sing to the Lord of Love	SACB	K. Seiband/Roff	L-117568	Cambiata Press
Six Folk Songs	SATB	Brahms	12597-9	Edward B. Mark
Something Told the Wild Geese	SATB	Margaret Vance	No. 2024	Belwin
Surely He Has Borne Our Griefs	SACB	Handel/Beal	M97201	Cambiata Press
Three Madrigals (No. 1)	SATB	Diemer	No. 5417	Boosey & Hawk
Time Gone	3 Part	Roger Emerson	403-20140	Jenson
The Twenty-Third Psalm	SAC(B)	Noxie Taylor	U17556	Cambiata Press
Ye Sons & Daughters Now Shall Sing	SA/SATB	Kjelson	No. 2025	Belwin

**LOUISIANA MUSIC EDUCATORS ASSOCIATION
STATE LARGE ENSEMBLE MUSIC PERFORMANCE ASSESSMENT
OFFICIAL ENTRY FORM 2014-2015**

DIRECTORS TAKE NOTE: LMEA supports 100% the laws regarding the duplication of scores. Any infraction by the duplication of scores without written permission from the publisher will result in the disqualification of the participant. Additionally, only teachers who are members of LMEA or non-members who pay a \$150.00 non-member Fee may enter this event. Late fee of \$100.00 if postmarked or hand delivered after deadline. ENTRIES are NOT ACCEPTED after the performance schedule is set. NO REFUNDS after schedule has been set. Schedules and information will place on the LMEA website (lmeamusic.org). No schedules or information will be mailed.

ELIGIBILITY: Only bands, choruses, orchestras and wind ensembles that earned a rating of **I** in concert and no lower than a rating of **II** in sight reading at the current year's district festival, or in the previous year's state festival under the present director, are eligible to enter the state music assessment. All groups must participate in the district assessment during the same academic year as the state assessment in order to participate in the state assessment.

ENTRY DEADLINE APRIL 1, 2015. NO REFUNDS AFTER SCHEDULE HAS BEEN SET.

Mail entry to: Bruce Lambert, LMEA Executive Secretary, P. O. Box 12046, Lake Charles, LA 70612

Check One: Band _____ Wind Ensemble _____ Full Orchestra _____ String Orchestra _____ Choir _____

Name of Organization: _____

School Name: _____

School Address: _____

_____ (City, State, Zip)

Band Hall/Choir Room/Office Phone (circle the correct one) _____

School Enrollment _____ LMEA Classification _____ Grades Represented: Lowest _____ Highest _____ Number in Group _____

Director's Name _____ Home/Cell Phone _____

Home Address _____

(City, State, ZIP) _____ Email address _____

Order of Music performed (Specify required number with a *) (Time: minutes/seconds of expected time in performing the selection)

Composition _____ Composer _____ Time _____

Composition _____ Composer _____ Time _____

Composition _____ Composer _____ Time _____

If the *LMEA Handbook* states your class must perform a "required number", list below the source and page number.

Source _____ Page _____

Choruses: (voicing required for sight reading event) _____ Name of Accompanist _____

FEES: The following fees are enclosed :	_____ students at \$3.75 each (minimum of \$200.00 per group)	\$ _____
	_____ \$150.00 non-member fee if applicable	\$ _____
	<u> x </u> Required Recording Fee \$30 per group	\$ <u> 30.00 </u>
	(Taping fee is required for all Choirs, Bands and Orchestras)	
	_____ Late fee if postmarked after deadline (\$100.00)	\$ _____
	Total Fees enclosed	\$ _____

Certification: This is to certify that the students in this organization are all bona fide students of this school and meet all requirements for participation in the State Large Ensemble Festival. ***You must attach a photocopy of your NafME/LMEA card.***

NafME ID NUMBER _____ EXPIRATION DATE _____

SCHOOL PRINCIPAL'S SIGNATURE _____

DIRECTOR'S SIGNATURE _____

**LOUISIANA MUSIC EDUCATORS ASSOCIATION
MARCHING BAND MUSIC PERFORMANCE ASSESSMENT
OFFICIAL ENTRY FORM 2014-2015**

Only LMEA Members or entries who pay the \$150 non-member fee may enter.

No refunds after schedule has been set. Late fee of \$50.00 if postmarked or hand delivered after deadline. ENTRIES are NOT ACCEPTED after the performance schedule is set.

Name of Marching Band: _____

School Name: _____

School Address: _____

_____ (City, State, Zip)

School Phone: (____) _____ Email Address _____

School Enrollment _____ LMEA Classification _____

Grades Represented: Lowest _____ Highest _____ Number in Group _____

Director's Name _____

Home Address: _____

FEES: The following fees are **enclosed**: _____ students at \$2.50 each (minimum of \$150.00 per group)
(maximum of \$250.00 per group) \$ _____
Recording Fee if applicable \$ _____
Non-member fee (\$150.00) \$ _____
Late fee if postmarked after deadline (\$50.00) \$ _____

Total Fees enclosed \$ _____

Certification: This is to certify that the students in this organization are all bona fide students of this school and meet all requirements for participation in this LMEA Festival.

NAfME ID NUMBER _____ EXPIRATION DATE _____

SCHOOL PRINCIPAL'S SIGNATURE _____

DIRECTOR'S SIGNATURE _____

**You must attach a photocopy of your NAfME/LMEA card.
ENTRY DEADLINE IS 30 DAYS PRIOR TO FESTIVAL**

.....

P. A. Info: Name of Organization _____

Music to be performed: _____

Drum Major: _____ Guard Captain _____

Drum Corps Captain _____ Other Officer _____

Outstanding Young Music Educator Award

Purpose: To recognize outstanding merit in music education. This award may be presented to one or more individuals new to the profession who have served their students, communities and profession in an exemplary manner. Nominations must be submitted by an LMEA member.

Nominee Information

(Must be an LMEA Member)

Name: _____

Position: _____

School: _____

City/Zip: _____

LMEA District #: _____

Email: _____

Phone: _____

Nominator Information

(Must be an LMEA Member)

Name: _____

Position: _____

School: _____

City/Zip: _____

LMEA District #: _____

Email: _____

Phone: _____

This nomination form must be accompanied by:

- A letter of nomination from an LMEA member, including a description of the nominee's qualifications for the award.
- Two additional letters of support from persons familiar with the nominee's work. These letters may be from an administrator, colleague, parent, or community member.

Nominee qualifications

Letters of support should address these qualities:

- The nominee must be a member in good standing of the Louisiana Music Educators Association
- The nominee must have completed one year but not more than five years of teaching.
- The nominee must have high professional and ethical standards.
- The nominee must have a commitment and dedication to his or her students.
- The nominee must have met the needs and interests of students, having brought about positive results in learning.
- The nominee must have enthusiasm for teaching, love for music, and a desire to further the musical education of his or her students.
- The nominee must have shown motivation toward professional growth and development.
- The nominee may not be a past recipient.

Send this form on or before **September 24, 2014** to:

Bruce Lambert
Executive Secretary LMEA
P.O. Box 12046
Lake Charles, LA 70612

Orchestrate Success in Your Career...

JOIN **LMEA** **NAfME**

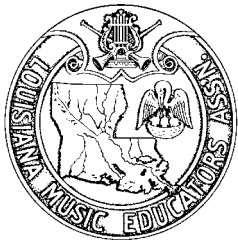
- ▶ **Get the 21st-century advocacy support** and resources you need to protect your music program.
- ▶ **Become part of the network** of serious, committed music educators addressing issues such as standards, assessment, scheduling and diversity.
- ▶ **Access to professional development experiences** including journals, national and state conferences, books, e-learning events, and online mentoring.
- ▶ **Spotlight your students** with opportunities such as national and state honor ensembles, music honor society, and composition contests.

To join or renew visit www.nafme.org



National Association
for Music Education





The Louisiana Musician

THE OFFICIAL PUBLICATION OF L.M.E.A.

PAT DEAVILLE, Editor

P.O. BOX 6294

LAKE CHARLES, LOUISIANA 70606

STANDARD
U.S. POSTAGE
PAID
PERMIT # 51
70601

Swicegood Music Company of Louisiana, Inc.

COMPLETE MUSIC SERVICE

308 E. Prien Lake Rd. • Lake Charles, LA 70601

(337) 477-2704

email: swicegoodmusic@bellsouth.net

"WE SPECIALIZE IN BANDS"



SELMER - KING - CONN - ARMSTRONG - BUFFET

JUPITER - LUDWIG - PEARL - MAPEX DRUMS

EDEN - MACKIE AMPS/PA SYSTEMS - HARTKE

JAY TURSER - WASHBURN - JASMINE - DAISY ROCK GUITARS

COMPLETE BAND ACCESSORIES

MUSIC - REPAIRS

"Learn What Music Can Do For You"

JOHN AND SUZANNE KELLEY

Right Note Studio

PROFESSIONAL LESSONS
PROVIDED AT ALL LEVELS