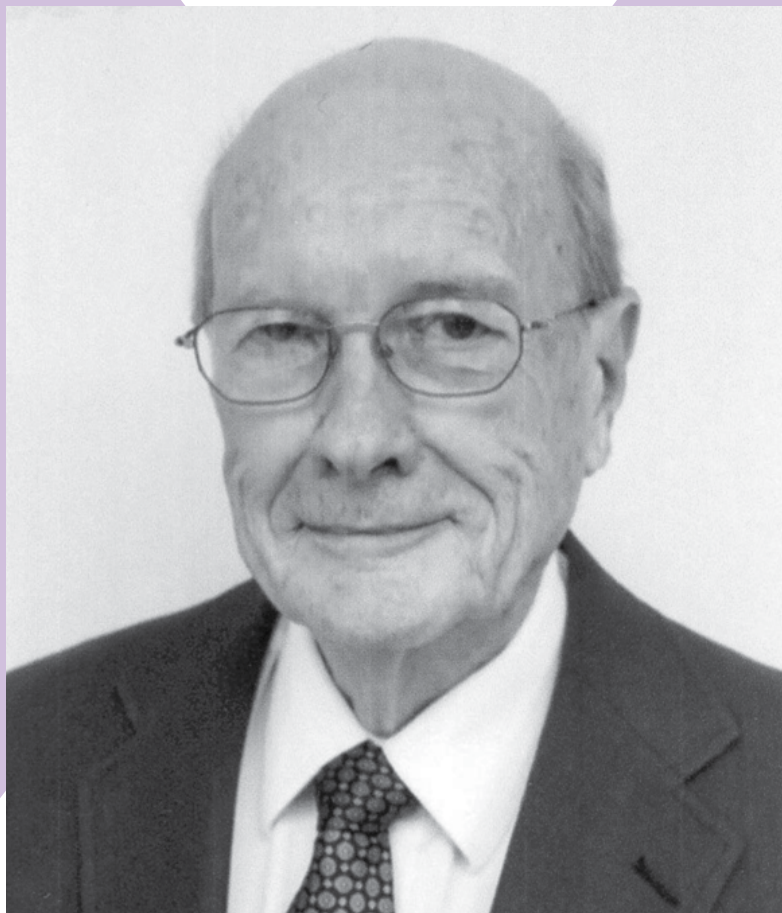


# The Louisiana Musician

*"The Official Journal of the Louisiana Music Educators Association"*

Volume 81 Number 2 November 2015

## *2015 Annual LMEA Professional Development Conference*



*John W. Stafford  
Hall of Fame*

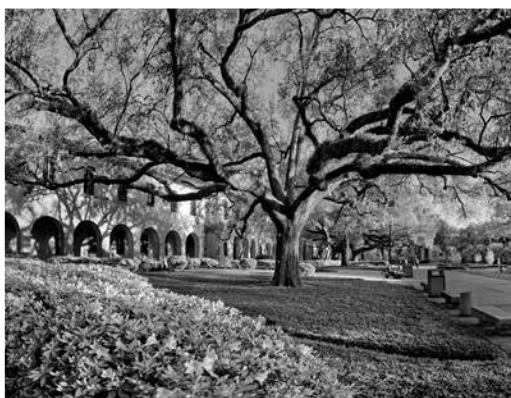


# LSU

College of

# Music & Dramatic Arts

## Louisiana State University



**2016 TEACHER OF THE YEAR  
CONGRATULATIONS TO LSU  
ALUMNA KELLY M. STOMPS**



## DEGREE OFFERINGS

Bachelor of Arts in Music

Bachelor of Music

Bachelor of Music Education

Minor in Music

Master of Music

Master of Music Education

Doctor of Musical Arts

Doctor of Philosophy in Music

## BECOME A STUDENT! APPLICATION DEADLINES

*Undergraduate: Nov. 15*

*Graduate: Jan. 1*

**225-578-9291**

**[music.lsu.edu/admissions](http://music.lsu.edu/admissions)**

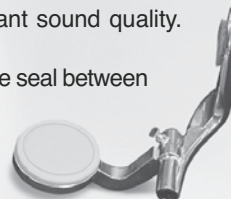


# Demand a Higher Standard

## Introducing the **NEW CSVR**

The Yamaha YCL-CSVr clarinet is the result of years of development dedicated to a clearly focused concept: crafting a Custom clarinet that has a beautiful sound, consistent quality, and an affordable price. Both student and professional clarinetists require a rich sound and comfortable playability. These qualities were combined with the high level of consistency that only Yamaha can provide, allowing clarinetists to demand a higher standard than ever before.

- Redesigned keys offer comfortable, ergonomic hand placement. In addition, the new keys have thicker silver-plating for a dark and resonant sound quality.
- Durable leather pads ensure a precise seal between pad and tone hole for ease of response throughout the entire range of the clarinet.
- A new Custom barrel design provides the CSVr with a well-balanced response and rich, warm tonal colors that will elevate the progressing clarinetist's playing.



Learn more now at [www.4wrd.it/csvrLMU2](http://www.4wrd.it/csvrLMU2)



# YAMAHA

©2015 Yamaha Corporation of America. All rights reserved.

*Custom*  
CS  
*V&R*



# The Louisiana Musician

VOLUME 81

NUMBER 2

November 2015

## In This Issue

From the President	3
President-Elect	3
From the Past President	4
2016 Louisiana State Teacher of the Year	4
From the Editor	5
Elementary Division Chairman	5
Band Division Chairman	6
Vocal Division Chairman	7
Jazz Division Chairman	7
Orchestra Division Chairman	7
Collegiate MENC Chairman	9
University Division Chairman	8
Treasurer Red Stick Chapter AOSA	9
Public Relations President	10
LAKE President	10
LMEA 2015 Hall of Fame	10
LAJE 2015 Hall of Fame	11
Outstanding Young Music Educators	12
Outstanding Administrator Award	12
2016 Louisiana State Teacher of the Year	12
LMEA Conference Pre-Registration	16
Conference at a Glance	17-18
Conference Schedule	19-23
All State Conductors	24-26
Consultants & Guest Performances	27-40

## Buyer's Guide

LSU	Inside Front Cover
Yamaha	1
Maroon Tune	11
McNeese	13
DeBose	14
Lafayette Music	14
LA Tech	15
National Guild	40
Artistically Yours	Inside Back Cover
Swicegood	Back Cover

# Louisiana Music Educators Association Board of Directors

**LMEA Website: <http://www.lmeamusic.org>**

## PRESIDENT

Sharon McNamara-Horne  
18449 Hosmer Mill Road  
Covington, LA 70435  
[sharon.mcnamara-horne@stpsb.org](mailto:sharon.mcnamara-horne@stpsb.org)

## PRESIDENT-ELECT

Fran Hebert  
P. O. Box 61373  
Lafayette, LA 70596  
[fwhebert@gmail.com](mailto:fwhebert@gmail.com)

## PAST-PRESIDENT

Sara Bidner  
5840 Glen Cove Drive  
Baton Rouge, LA 70809  
[sarabidner@yahoo.com](mailto:sarabidner@yahoo.com)

## EXECUTIVE SECRETARY

Bruce Lambert  
P.O. Box 12046  
Lake Charles, LA 70612  
[brucelambert@att.net](mailto:brucelambert@att.net)

## DISTRICT DIRECTORS

### DISTRICT I DIRECTOR

Greg Oden  
106 McAlpine Dr.  
West Monroe, LA 71291  
[oden@opsb.net](mailto:oden@opsb.net)

### DISTRICT II DIRECTOR

Johnny Walker  
5146 Windermere  
Alexandria, LA 71303  
[johnny.walker@rpsb.us](mailto:johnny.walker@rpsb.us)

### DISTRICT III DIRECTOR

Brett Babineaux  
304 N. Michot Rd.  
Lafayette, LA 70580  
[bababineaux@lpssonline.com](mailto:bababineaux@lpssonline.com)

### DISTRICT IV DIRECTOR

Richard Bresowar  
1121 E. Rome Street  
Gonzales, LA 70737  
[Richard.bresowar@apsb.org](mailto:Richard.bresowar@apsb.org)

### DISTRICT V DIRECTOR

Sharon Stephenson  
1214 Laura Street  
Sulphur, LA 70663  
[sharon.stephenson@cpsb.org](mailto:sharon.stephenson@cpsb.org)

### DISTRICT VI DIRECTOR

Guy Wood  
3817 Williams Place  
Jefferson, LA 70121  
[gwood68@aol.com](mailto:gwood68@aol.com)

### DISTRICT VII DIRECTOR

Jim Trant  
4025 Hwy. 308  
Raceland, LA 70394  
[districtseven@bellsouth.net](mailto:districtseven@bellsouth.net)

## DISTRICT VIII DIRECTOR

Mark Minton  
206 Bobbie St.  
Bossier City, LA 71112  
[mark.minton@bossierschools.org](mailto:mark.minton@bossierschools.org)

## DISTRICT IX DIRECTOR

Neal Naquin  
70325 Petit Rd.  
Mandeville, LA 70471  
[neal.naquin@stpsb.org](mailto:neal.naquin@stpsb.org)

## DIVISION CHAIRS

### BAND DIVISION

Jay Ecker  
700 Royal Street  
Lake Charles, LA 70607  
[jay.ecker@cpsb.org](mailto:jay.ecker@cpsb.org)

### VOCAL DIVISION

Mike Townsend  
1322 Choctaw Rd.  
Thibodaux, LA 70301  
[rtownsend@stcharles.k12.la.us](mailto:rtownsend@stcharles.k12.la.us)

### ORCHESTRA DIVISION

Katrice LaCour  
748 Coco Bed Rd.  
Cloutierville, LA 71416  
[klacour@nat.k12.la.us](mailto:klacour@nat.k12.la.us)

### JAZZ DIVISION

Lee Hicks  
69285 3rd Ave.  
Covington, LA 70433  
[Ralph.hicks@stpsb.org](mailto:Ralph.hicks@stpsb.org)

### UNIVERSITY DIVISION

Jay Jacobs  
5200 Nelson Rd. #408  
Lake Charles, LA 70605  
[jjacobs@mcneese.edu](mailto:jjacobs@mcneese.edu)

### ELEMENTARY DIVISION

Michele White  
1522 20th St.  
Lake Charles, LA 70601  
[mmwhite406@mac.com](mailto:mmwhite406@mac.com)

### COLLEGIATE MENC

Ed McClellan  
868 S. Clearview Parkway #339  
River Ridge, LA 70123  
[emcclell@loyno.edu](mailto:emcclell@loyno.edu)

### PUBLIC RELATIONS

Carolyn Herrington  
2208 Blankenship  
DeRidder, LA 70634  
[dhsband@beau.k12.la.us](mailto:dhsband@beau.k12.la.us)

## EX-OFFICIO MEMBERS

### EDITOR:

The Louisiana Musician  
Pat Deaville  
P.O. Box 6294  
Lake Charles, LA 70606  
[patrick.deaville@cpsb.org](mailto:patrick.deaville@cpsb.org)

### LBA PRESIDENT

Keith Rogers  
227 Kidder Road  
Carencro, LA 70520  
[tkrogers@lpssonline.com](mailto:tkrogers@lpssonline.com)

### LAKE

Casey Doucet  
308 Virginia Street  
Sulphur, LA 70663  
[doucetcasey87@gmail.com](mailto:doucetcasey87@gmail.com)

### HALL OF FAME

Tom Wafer  
1834 Wimpole St.  
Baton Rouge, LA 70815  
[tigerbandpat@yahoo.com](mailto:tigerbandpat@yahoo.com)

### ACDA

Caroline Carson  
[cpcarson@uno.edu](mailto:cpcarson@uno.edu)

### LAJE

B.J. McGibney  
7318 Briarplace Dr.  
Baton Rouge, LA 70817  
[WMcgibney@ebrpss.k12.la.us](mailto:WMcgibney@ebrpss.k12.la.us)

### AOSA

Red Stick Chapter  
Gina Anthon  
308 W. Church Street  
Hammond, LA 70401  
[ganthon985@gmail.com](mailto:ganthon985@gmail.com)

### CONFERENCE COORDINATOR

James Hearne  
138 Kathy Drive  
Ragley, LA 70657  
[james.hearne@cpsb.org](mailto:james.hearne@cpsb.org)

### LSTA PRESIDENT

Michelle Wilkinson-Nelson  
36309 E. Pine Grove Ct.  
Prairieville, LA 70769  
[Mwn6861@aol.com](mailto:Mwn6861@aol.com)

## From the President Sharon McNamara-Home

### LMEA's Annual Professional Development Conference

The LMEA Professional Development Conference will be held November 19-23 at the Crowne Plaza Hotel and Convention Center in Baton Rouge. One of the highlights is always the All-State Concerts – six ensembles made up of 500 of the most talented band, choir, orchestra, and jazz students from around the state.

In addition, there are many professional development opportunities for instrumental and vocal directors, elementary music teachers, and collegiate members, including outstanding clinics and opportunities to observe the rehearsal techniques of nationally-known conductors as they rehearse our All-State students. Of course, there are always opportunities for networking and exchanging tips and ideas with teachers from other parts of the state. Between sessions, be sure to take time to visit the commercial and college exhibitors and talk with them about ways that they can help you, your programs, and your students.

The pre-registration deadline for directors with students in All-State is October 23, 2015. For all other LMEA members, the pre-registration deadline is November 13, 2015. Forms can be accessed in *The Louisiana Musician* or online at [www.lmeamusic.org](http://www.lmeamusic.org).



### Elections for President and Division Chairs

The election for LMEA President and Division Chairs alternates years with the election for with District Directors. This year we hold elections for the offices of LMEA President and Division Chairs, which include Band, Choir, Jazz, Orchestra, Elementary, University/Research, Collegiate, and Public Relations Chairs. A description of the responsibilities of each office will be available online prior to the conference. You should also feel free to talk to any of us who currently hold an office. If you are interested in running for any of these offices, you will need to submit your name to Sara Bidner, past president, by December 31<sup>st</sup>. Either give her your name at the Conference registration table or email her at [sarabidner@yahoo.com](mailto:sarabidner@yahoo.com).

### Reminders about Copyright Laws

Don't forget that LMEA supports copyright laws! The following lists (which are **not complete**) come from information found in the 1976 Copyright Act. This information and much more can be found on the NAFME website at <http://www.nafme.org/my-classroom/copyright/>. I've highlighted **some of the regulations** below:

As a music educator, things that you CAN do include:

- Make a copy of a lost part in an emergency, provided it will be replaced with a purchased part
- Make one copy per student of up to 10% of a musical work as part of a lesson (this cannot be a performable excerpt)
- Make a single recording of a student rehearsal or performance for study or evaluation and retain it for the school's archive
- Make a single recording of aural exercises or tests using copyrighted material
- Edit or simplify a purchased piece of music provided the fundamental character of the work is not distorted or lyrics, if any, altered or added in none exist

Things you CANNOT do include:

- Copy to avoid purchase
- Copy music for any kind of performance (except in an emergency as described above)
- Copy music (following the restrictions above) without including a copyright notice
- Copy to create anthologies or compilations (for teachers or schools)
- Reproduce materials that are designed to be consumable (for example: workbooks, standardized tests, and answer sheets)
- There are **many additional restrictions** on both the performance and the recording of music. Please take the time to read the information about copyright laws found on NAFME's website.

As always, if I can be of assistance, please email me at [sharon.mcnamara-horne@stpsb.org](mailto:sharon.mcnamara-horne@stpsb.org). I hope to see you at the LMEA Conference!

## President-Elect Fran Hebert

Why LMEA? Let me count a few of the reasons:

1. **LMEA is an entity of NAFME**, the national organization for music educators. NAFME sets the standards for music education nation-wide. Our present state content standards are patterned after expectations from the national standards written by members of NAFME. I know this because I had the privilege of being a member of the committees who wrote our own state standards. When our state standards are revised, the curriculum standards of NAFME will again be incorporated.

2. **Music assessment** is in the process of becoming standardized within our state as well as nationally. LMEA members and the LMEA board contribute to this development at various levels. LMEA provides the model for district and state/regional instrumental and choral assessments. Our adjudication criteria and our forms are linked with national development.

3. **All-State student performances, instrumental and choral**, were the initial reason for the LMEA fall conference. These were held in conjunction with the state teacher's organization. I had the privilege of attending the 1972 conference in New Orleans where I heard the Lafayette Middle School choir in a guest performance (a large group that filled the stage), directed by Mary Jane Joyner-Jones. As a college student at the time, I was elated to hear such a wonderful local choir in a state performance. Imagine how honored I felt to have followed her as choral director at Lafayette Middle and provided the feeder school choral music education for her top-notch choirs at Lafayette High. She later became LMEA District



*Continued on next page*

Continued on from page 3

3 Director. It was around this time of this conference that LMEA members began to express a desire for sessions presented by colleagues to be added to the all-state performance event. Hence, the LMEA fall conference has evolved to an event with over 400 members in attendance.

4. **Professional Development** is required in Louisiana. LMEA leads the way with our fall conference which features professional development clinics presented by state, regional, and nationally known personalities, all who are leaders in the field. LMEA conductor clinics, elementary/middle/high school clinics, exhibits, and meetings offer opportunities to enter tomorrow with enhanced knowledge of 'how to' and 'what to' do for the music classroom and the music career.

5. **The Music Career** is a changing profession. Statistics from universities and the reality of unstaffed music classrooms indicate a change from the retiree who maintained a lifetime career in school music programs to the young music educator enlisted for the short term. There is also the indication that parishes are choosing to centralize arts programs which subsequently decreases and even possibly eliminates the arts in other area schools. It is good to know that LMEA members are pro-active in advocacy and grass roots initiatives to help teachers and school systems with any aspect of this changing environment in music education.

6. **Stability** is required in an organization that intends to promote music education and see it thrive. LMEA is founded on the democratic principles of running for office, membership voting, open forums, surveys, and reviews of its board members and its activities. The organization reaches to flow with modern trends while maintaining the 'tried and true' values that mark the standards for leadership. LMEA is conservative financially which avails the organization the resources to invest in its members and their students.

7. **Investment in others** is a priority of LMEA. The original Fall Vocal Conference, which began in the 90's, was a joint effort of LMEA and ACDA. LMEA continued to provide assistance and finances until ACDA could function as an independent music organization. There are numerous music camps, marching band assessments, and other music activities throughout the state that were initiated by LMEA. I appreciate belonging to an organization with a vision whose scope is broad enough to bring others alongside to enjoy success in the profession.

8. **People** are the most valuable entity in our lives and in our profession. Throughout the decades I have met so many wonderful people through LMEA. I have had the pleasure of working with students, parents, administrators, colleagues, and renowned musicians in Louisiana and numerous other state MEA's. These opportunities have afforded a wealth of experiences with like-minded people who enjoy making music and developing the craft of music education. The heart of LMEA is a philosophy of service face-to-face with and for people. Plans for activities are made accordingly. 'Checks and balances' within the organization insure accountability. We are here for each other and for the kids. Then the finest of music happens.

9. **A personal reflection** would share that through my membership in LMEA I have been blessed to have friends and colleagues who have influenced the direction of my life. These relationships are of immeasurable worth. LMEA activities have provided me with a quality foundation for a successful career and numerous opportunities to grow and flourish as a music educator for over 40 years.

Why are you an LMEA member? I would be thrilled to know. Please forward your reasons to my email: fwhebert@gmail.com - I would like to post your statement of support for the organization (anonymously if you choose) at the conference, November 19-23 at the Crowne Plaza in Baton Rouge. I look forward to seeing you there.

## From the Past President Sara Bidner



### LMEA Elections – nominations open

Elections for the positions listed below will be held Spring 2016, with terms of office beginning June 1, 2016. District Directors will be elected in 2017 (odd-numbered years).

- President-Elect (6-year commitment)
- Division Chairs (2-year terms of office)
  - Band Division
  - Collegiate Division
  - Elementary Division
  - Jazz Band Division
  - Orchestra Division
  - Public Relations
  - University/Research Division
  - Vocal Division

Nominees for LMEA Board of Directors are **due** no later than **December 31**.

Any LMEA member may nominate oneself or another LMEA member for a position on the Board of Directors. To do so, submit a letter of nomination containing the nominee's name, address, email address, and phone number, along with the person's current teaching position and school. Send to Sara Bidner, Elections Committee Chair, at [sarabidner@yahoo.com](mailto:sarabidner@yahoo.com) or 5840 Glen Cove Drive, Baton Rouge, LA 70809. Also include contact information of the nominator.

Before you nominate someone to any of the above positions, take into careful consideration the amount of time, effort, and dedication that is required of the position. All LMEA activities are totally managed by the Board of Directors, thus requiring a great deal of time, commitment, and collaboration from each of these positions. All-State Events and State/Regional Performance Assessments are especially demanding, and it is up to these Division Chairs, in conjunction with the Executive Director, Executive Officers, and District Directors, to ensure that all planning, record keeping, management, and supervision is handled accurately and in a timely manner.

The president-elect nominee must have served at least one two-year term of office on the LMEA Board of Directors. The president-elect will serve two years in that capacity before advancing to the presidency for two years. The final two years of the 6-year commitment will be as immediate past president. Each of these two-year positions contains specific duties and requirements in leadership of the Association. As Past-President, I serve as Elections Committee Chair, and I encourage you to show your interest in LMEA through your participation in the election process.

Another of my responsibilities is serving as the LMEA Conference Registration Chair. I'm looking forward to outstanding participation in the annual Professional Development Conference November 19-23, 2015, at the Crowne Plaza in Baton Rouge. It is with the combined efforts of the LMEA Board of Directors and the dedication of **all** NAfME/LMEA members that we most successfully serve music education in the State of Louisiana. Let's come together as the **Louisiana Music Educators Association** to make our students, parents, administrators, school boards, and communities know that we care – and that we believe in the power of music to make a difference in "Orchestrating Success" in our world!

## From the Editor's Desk

### Pat Deaville

is Former Director of Curriculum  
and Instruction  
Calcasieu Parish Schools



*What should the school experience really be for our students? I wrote the following poem about education as seen through the eyes of a child. Hope you enjoy.*

Great-grandparents. The airplane. Grandparents. First TV.  
My parents. It was the computer. For me? What will it be?

The one thing that seems certain. Is that it's just not known.  
The history you teach to me. Uncharted paths aren't show.

The world changes every day. So what must I be taught?  
To be prepared for what will be. My future to be caught.

I hear grownups talk about. Twenty-first century.  
They say that I must be prepared. For things they do not see.

It seems we spend much school time, on things like bubble tests.  
The adults say tests help us learn. I guess they know what's best.

I'm just a child. With much to learn. Don't mean to criticize.  
But it does seem strange, some things you do. When seen though my child eyes.

What do I think must be done? Just what is in my heart?  
I'm just a child. With much to learn. But this is how I'd start.

Teach me how to read of course. Good books. But people too.  
Teach me how numbers work. The many ways they're used.

Teach me to balance my life. Take pride and do stand tall.  
Teach me to be responsible. Accountable for all.

Teach scientific method. Teach logic. How to think.  
Allow me to learn with projects. With presentations link.

Teach me to work with others. Learn how to give and take.  
Teach me how to set my own goals. And let me make mistakes.

Teach me about history. About the good and bad.  
Teach about past and present. The lasting and the fads.

Teach me how to measure things. Success. Failure. Progress.  
Allow me to walk different paths. And give me time to rest.

Teach me love and beauty. Let me be creative.  
Let me sing and draw and make things. Become innovative.

Let me dance. Compete in sports. Community. I'll serve.  
Be there for me. But let me fail. I'll win when I deserve.

Teach today's technology. But don't try to pretend,  
That they're the tools I'll use through life. They're just where I'll begin.

What are the tools? No one knows. A brand new internet?  
What really will replace that thing? Well? Not invented yet.

The smart phones that you carry. Some day will be old junk.  
Most of the things you use today, will be antiques in trunks.

Don't let all this bother you. The unknown world ahead.  
My generation will adapt. If we are wisely led.

Lead us on as best you can. And teach us right from wrong.  
Inspire us with the way you work. With art and also song.

Teach me with good example. Best lessons that I learn?  
Best lessons are from watching you. In mind and heart, they're burned.

## Elementary Division Chairman

### Michele White



"The pure soul of the child must be considered sacred; what we implant there must stand every test, and if we plant anything bad, we poison his soul for life." --Zoltan Kodály

The new school year has been in session for nearly nine weeks as I write this, and I am reminded more than ever of the truth in Mr. Kodály's statement. Surely, my elementary children deserve the very best music, activities, and music teacher possible. I am committed to doing as much as I can this year to ensure they will have just that.

After a broken finger in 2013 and a broken leg and third degree burn from the surgery to fix it in 2014, I am committed to an injury-free tenure this year! My children ask always about my leg and my health – what sweet and caring children they are. Surely they embody the "pure soul of the child"!

Lamar Robertson, my mentor and predecessor at R. W. Vincent Elementary School in Sulphur, provided a meaningful and educational workshop on September 12 in Lafayette. What an inspiring man! At 82 years young, he still is going full strength! The weekend after our workshop, he flew to Oklahoma to headline a workshop there. This past weekend, he provided a workshop for 70 music teachers at the University of Houston!! He is the personification of "the pure soul of the child". Watching him teach adults and speak about music education gives all who are lucky enough to participate in his clinics the strength and courage to continue in the field. As he said that day, "Aren't we lucky to get to make music all day with children – what a happy job we have!"

Dr. Sandy Mathias, professor emerita at Capital University in Columbus, OH, will be sponsored by the Louisiana Association of Kodály Educators November at LMEA. She will offer four sessions for us: **Developing Part-Singing in Grades K-6; Teacher Preparation for Teaching a Choral Piece to Ensure Student Success; Empowering Students to Be Independent Readers, and Choral Curriculum Planning for a Program, Year, and Each Concert.** Her work in the music education field for over 30 years is well known. We are so excited she'll be joining Dr. John Feierabend on the LMEA lineup this year! The schedule for her clinics is available in this issue of Louisiana Musician and in the fall LAKE newsletter.

*Also presenting clinics this November are: Bryan Burton, West Chester University of Pennsylvania, Musical Games from Around the World and Discovering a World of Music in Your Community's Backyard; Charlotte Mizener, Lamar University, Getting to the CORE of Mathematics Through Music; Michael Ruybalid, Southeastern Louisiana University, Early Childhood Music Through Multiple Lenses; Judith A. Sullivan, Tennessee Technological University, Music Class Begins at the Door! Striving to Make Every Minute Musical; Chris Murphy, Quaver Music, Do Mobile Devices and Music Go Together, and Teaching Can Be Fun Again with Quaver!*

The Red Stick Orff and LAKE chapters cordially invite all music teachers to a "buy your own lunch" get-together during the noon hour on Friday, November 20. We hope teachers will break bread and enjoy each other's company during the conference at that time. It is through friendship, encouragement, and support that we can all join together in making music an uplifting and beautiful experience for all the students we are privileged to teach.

I have spent a lot of time thinking about what it is that we do each day in our classrooms. After reflecting on what my students are really saying as they voice their desire to have people listen to them, I have discovered they often feel detached from human experiences. In asking questions, it has become obvious that most people around them are attached to their devices and are not mindful of the time they spend with their children.

Surely our children are the most precious beings around. We – those of us who are committed to teaching children through the amazing power of music – must remember that music is the most human of all the arts. In this increasingly technologically driven world, it is more important than ever that we embrace the opportunity we have to celebrate our "human-ness" in our classrooms. We should ensure that our students are encouraged to express themselves in a human and humane way. As my favorite poster asserts: **"The fact that children can make beautiful music is less significant than the fact that music can make beautiful children."**

I hope I will see all of you at the conference this November. It promises to be a time of encouragement, support, and celebration of our profession and its power to change our world and the world of our students. See you soon!



## Band Division Chairman

### Jay Ecker



I would like to offer my sincere thanks on behalf of LMEA to everyone who volunteered to help make 2nd Round All-State Auditions a huge success. I hope that all of our students had a positive audition experience. If you have any comments or suggestions on the audition process, please don't hesitate to let me know. Special thanks to Scotty Walker and his staff and Lafayette High School Administration, and to all those who helped host and run the auditions. Also, let me thank Carol Lupton and Phi Beta Mu for providing monitors, Jay Jacobs for securing judges and all of the directors who volunteered your time.

I hope everyone will make plans to attend LMEA convention this year and attend the outstanding All-State Band concerts. I encourage each of you to sit in on some of the rehearsals and learn from our outstanding clinicians. The clinicians and their programs are:

Concert Band: Conducted by Jeff Cannon

Program:

Esprit de Corps - Robert Jager  
Hounds of Spring - Alfred Reed  
Ave Maria - Franz Biebl  
Sleigh Ride - Leroy Anderson

William "Jeff" Cannon, Sr. received a Bachelor of Music Education from Delta State University in 1980, where he served as drum major of the DSU band for four years. In 1995 Jeff received the Master of Music Degree from Mississippi College. Jeff is a 1974 graduate of Pearl High School where he played trumpet, was drum major of the Pearl Pirate Band and was a member of the 1974 Mississippi Lions All-State Band.

After receiving his bachelor's degree, Jeff served first as assistant director, then director of bands for Madison-Central band program in Madison, MS for eight years. In the summer of 1988, Jeff became associate director of bands for Pearl Public Schools, and was appointed Director of Bands for the Pearl Public Schools in 2007. The Pearl "Pirate" marching band has rated all-superior for 46 consecutive years at the Mississippi State Marching Festival. Among its many accomplishments, the Pearl band was selected to represent Mississippi at President George W. Bush's Inauguration in January 2001. They were also selected to perform in the 1999 Macy's Thanksgiving Day Parade in New York City and were the featured band on NBC's *Today Show* while in New York. The Pirate marching band has achieved numerous awards both locally and nationally, including a first place performance at the National Cherry Blossom Festival in Washington D.C., and Grand Champion Marching Band for the State of Mississippi in 1997. Under his direction, the Pirate Band won the Class 4A State Marching Championships in 2007, and were the Class 5A marching champions in 2009, 2011 and 2012. The Pearl Band Program also received the American School Band Director's Association "Award of Excellence" for its outstanding instrumental music program. Pearl's symphonic, concert and varsity band programs have consistently rated superior during the past twenty years as well. The Pearl Symphonic Band performed at the Southern Conductors' Conference in February 2008 at The University of Southern Mississippi and has achieved "Sweepstakes" status all six years that the award has been presented.

Jeff served as President of the Mississippi Band Master's Association in 2003. Under his leadership the MHSAA/MBA State Marching Championships were initiated and now over 5000 students participate each year. In addition, the MBA All-State Band was established and nearly 1000 students audition each year for this prestigious ensemble. Jeff was named Delta State University Alumnus of the year in 2003, and the National Federation of High Schools Outstanding Music Educator in 2003.

Jeff has served on the staff of the Mississippi Lions All-State Band twenty-one times in such capacities as staff assistant, marching director, concert director, assistant manager, and was appointed Director/Manager in July of 2006. The Mississippi Lions Band travels worldwide to participate in Lions International Parade competitions and has won 31 international championships since 1951.

In the summer of 2015 Jeff received an appointment to become Interim Director of Bands for Jones County Jr. College in Ellisville, MS. The famous Maroon Typhoon Band marches for athletic events, parades and this year will be featured in the McDonalds Parade of Lights in Chicago, IL.

Jeff retired from Pearl High School in July 2013 and has served as Director of Music at First Baptist Church of Terry, MS, for over 16 years. Jeff continues to serve as Director/Manager of the Mississippi Lions All-State Band and is currently serving in his 9<sup>th</sup> year as Director/Manager. He and his wife, Dian, have five children ages 41, 40, 39, 35, and 26. They have six grandchildren Abby, Simon, Austin, Alaina, Seraphina, and Owen.

Mr. Cannon will present a clinic titled "My Band is Going to Japan Next Year, is Yours?"

Symphonic Band conducted by Robert Sheldon:

Program

Armenian Dances, Part 1 - Reed  
Children's March - Grainger  
Fantasia on Black is the Color - Camphouse  
Danzas Cubanas - Sheldon

Robert Sheldon (b. Feb 3, 1954) has taught instrumental music in the Florida and Illinois public schools, and has served on the faculty at Florida State University where he taught conducting and instrumental music education classes, and directed the university bands. As Concert Band Editor for Alfred Music Publishing, he maintains an active composition and conducting schedule, and regularly accepts commissions for new works. Sheldon received the Bachelor of Music in Music Education from the University of Miami and the Master of Fine Arts in Instrumental Conducting from the University of Florida.

An internationally recognized clinician, Sheldon has conducted numerous Regional and All-State Honor Bands throughout the United States and abroad. His teaching career included 28 years in the Florida and Illinois public schools as well as at the University of Florida, Florida State University, Illinois Central College and Bradley University. He also held positions as conductor of the Alachua County Youth Orchestra in Gainesville, Florida and the Prairie Wind Ensemble in East Peoria, Illinois. He maintains membership in several organizations that promote music and music education. He is lead author for the SOUND INNOVATIONS FOR BAND method books, and is a co-author for the MEASURES OF SUCCESS Volume 1 method book and the SOUND INNOVATIONS FOR STRINGS method books.

The American School Band Directors Association has honored him with the Volkwein Award for composition and the Stanbury Award for teaching, and the International Assembly of Phi Beta Mu honored him with the International Outstanding Bandmaster Award. He has also been a twenty-eight-time recipient of the American Society of Composers, Authors and Publisher's Standard Award for his compositions in the concert band and orchestral repertoire. His compositions have been recorded and released on compact discs including, Images: The Music of Robert Sheldon, and Infinite Horizons: The Music of Robert Sheldon, as well as numerous other recordings. Mr. Sheldon has been the topic of articles published in The Instrumentalist, Teaching Music and School Band and Orchestra Magazine, and is one of eleven American wind band composers featured in Volume I of Composers on Composing Music for Band.

Mr. Sheldon will present a clinic titled "To Music and Beyond!"



## Vocal Division Chairman *Michael Townsend*



"Thank you" to District 3 band and choir directors for hosting our All-State second round auditions at Lafayette High. Thanks especially to our host personnel Scotty Walker, Fran Hebert, Holly Grefe, and Will Green.

"Congratulations" to directors and participants in All-State choirs. We begin activities on Thursday, November 19 with our guest director rehearsals for Women's Chorale at 12:30 p.m., Mixed Choir at 5:30 p.m. Every rehearsal and activity is required for every member of an all-state group. Participants in both groups should have received the schedule of times and locations for their respective rehearsals and performance. **No** choir member will be allowed to participate without 'on-site' adult supervision by a registered chaperone. Also – **ALL participating directors are required to register for the conference.**

Ms. Angie Rawls from Pearl Mississippi, will serve as clinician for the Women's Chorale. Dr. Roland Carter, Professor Emeritus, University of Tennessee- Chattanooga, will serve as clinician for the Mixed All-State Choir.

Our official vocal division business meeting is scheduled for Saturday morning, 8:15 a.m. in the Mississippi Queen/Delta Queen room. Please email in advance to submit agenda items: [michaeltownsend@charter.net](mailto:michaeltownsend@charter.net) or [rtownsend@stcharles.k12.la.us](mailto:rtownsend@stcharles.k12.la.us)

LMEA 2016 State Choir Festival will take place at various locations in the new three region assessment. Regions are divided geographically North Louisiana (Districts 1, 2, 8); Southeast Louisiana (Districts 6, 7, 9) and Southwest Louisiana (Districts 3,4,5). Check with your District representative for dates/times for the assessment in your region.

Best wishes for wonderful fall and seasonal concerts and performances. I look forward to seeing each of you at the convention.

## Jazz Division Chairman *Lee Hicks*



The LMEA Annual Conference will be here before you know it and as you will see in the conference program, the LMEA Jazz Division along with LAJE (Louisiana Association for Jazz Education) will be offering some outstanding clinics. We certainly hope that all directors will attend the jazz division clinics. Those in attendance will surely learn something to take back to their students to improve their programs and make their students better musicians. The LMEA Jazz division and LAJE continue to work together to broaden perspectives of music educators. This year is no different as we are offering you some outstanding clinics to give you the tools you might need to help include jazz in your program. As always, the conference is a great time to share information and time with our colleagues, to exchange ideas about the successes in our programs, and to meet other directors you may not have met before. So, while you're at the conference, please take the time to attend the professional development clinics offered and, of course, especially those offered by the LMEA Jazz Division.

Our 2014 LMEA All State Jazz Ensemble conductor is Professor Jack Wilkins of the University of South Florida. At USF Mr. Wilkins is the Director of Jazz Studies, coordinates the Jazz Ensembles program; teaches Jazz Improvisation, Jazz Styles and Analysis, Jazz History, and Applied senior and graduate level jazz performance courses; and performs with the USF Faculty Jazz Ensemble.

Wilkins directs the USF Jazztet, which has performed at the at the invitation of some of the world's most prestigious jazz festivals including Italy's Umbria Jazz Festival and Tuscany Jazz Festival, Jazz a Juan and Jazz a Vienne in France, the Montreux Jazz Festival in Switzerland, and the North Sea Jazz Festival in the Netherlands.

An accomplished saxophonist, Wilkins has released three CDs; Artwork, Ridgelines, and Dear Old Stockholm. Wilkins can also be heard as a featured soloist on the internationally acclaimed recordings by Chuck Owen and the Jazz SURGE.

Wilkins has performed and recorded with many jazz greats including: Nat Adderley, J.J. Johnson, Red Rodney, Bobby Shew, Hank Marr, the Nelson Riddle Orchestra, Cleveland Jazz Orchestra, and David Baker's 21st Century Bebop Band. Wilkins has recorded for a number of commercial projects, including John Mellencamp's Scarecrow and Chronicles CDs.

A faculty member of the Jamey Aebersold Summer Jazz Workshop for over 20 years, Wilkins also teaches at the Jazzwise Summer Workshops in London, is a Selmer Instrument Company Artist/Clinician, and is the author of Essential Jazz Etudes published by Mel Bay Inc.

Wilkins completed undergraduate work at the University of Miami and Appalachian State University and earned his MM in jazz studies from Indiana University.

## Orchestra Division Chairman *Katrice LaCour*



Douglas Droste

Our 2015 All-State Conductor Douglas Droste is recognized as possessing "obvious joy" for making music and a "sure sense of timing" when on the podium. Those under his baton routinely acknowledge his in-depth musical interpretations, keen sense of communication, and personable ability to empower musicians. Droste is the Artistic Director of the Muncie Symphony Orchestra and Director of Orchestras at Ball State University.

Droste has led dynamic performances with the MSO and has been praised for his innovative programming. He has conducted performances of Scott Routenberg's Concerto for Jazz Violin and Orchestra featuring Christian Howes, Michael Torke's Ash, Michael Shapiro and Victor Cheng's Identity: Zhongshang Zhuang, Concerto for Guzheng and Orchestra featuring Su Chang, pieces by Tan Dun and Bright Sheng, and recently commissioned Joe Deninzon's Concerto for Rock Violin and Orchestra. Droste has also led passionate performances of traditional repertoire such as Beethoven's Symphony No. 9, Debussy's La Mer, Bartok's Concerto for Orchestra, Respighi's Pines of Rome, and Mozart's Symphony No. 35.

Believing that community engagement is critical for orchestras, Droste has helped establish new concerts such as the Martin Luther King Jr. Memorial



Continued on from page 7

Family Concert, a Sensory Friendly concert for children with special needs, and a Toddler Pops concert. He helped initiate the development of the new MSO Family Series including co-creating/producing the popular Young People's Concert, "Music is Science!". Droste continues to program accessible pops concerts with artists such as the groundbreaking string trio, Time for Three, the Ball State University "Pride of Mid-America" Marching Band, and local blues/gospel singer-songwriter, Jennie DeVoe. Droste resides in Muncie and regularly speaks to area civic organizations.

At Ball State, Droste conducts the Ball State Symphony Orchestra (BSSO) and oversees the orchestral conducting program. Recent performances with the BSSO have included Franck's Symphony in D Minor, Saint-Saëns's Symphony No. 3 ("Organ"), and Elgar's Enigma Variations. Droste also leads the opera orchestra. He recently conducted Puccini's *La Bohème* and Massenet's *Werther*. Always seeking unique collaborations, the BSSO has combined with the BSU Jazz Ensemble on two occasions: a dual performance of the *Nutcracker Suites* by Piotr Ilyich Tchaikovsky and Duke Ellington; and the first live performance of Oliver Nelson's *The Kennedy Dream* since the original recording release in 1967.

In 2014, Droste and jazz violinist Christian Howes were invited by the U.S. Embassy in Ukraine to perform and teach as part of an ongoing cultural exchange and engagement. Droste guest conducted the INSO-Lviv Symphony Orchestra in a goodwill concert entitled "Music from the New World" and gave a conducting master class to young Ukrainian conductors. Other recent guest conducting includes the Columbus Symphony and BalletMet Columbus's production of *The Nutcracker*, the orchestras of Oklahoma City, Tulsa, Midland-Odessa; and the Amarillo Virtuosi Chamber Orchestra on an all-Bach concert, performing as violin/leader on Brandenburg Concerto No. 1. Demonstrating his versatility, Droste has conducted pops concerts with artists such as Ben Folds, The Flaming Lips, Pink Martini, Michael Cavanaugh, John Pizzarelli, and Emily Drennan.

A dedicated advocate of music education, Droste regularly conducts youth orchestras and presents in-service conference sessions throughout the country. He is active as a clinician and adjudicator for school orchestras and festivals, and is affiliated with organizations such as Yamaha, Music For All, American String Teachers Association, Festival Disney, and Perform International.

A talented violinist, Droste has performed with the orchestras of Oklahoma City, Tulsa, Nashville, Memphis, Lubbock, and the Lancaster Festival (OH). He is a former student of John Gilbert and the late Michael Davis. Droste is also skilled on viola and trumpet, and has sung with a variety of choral ensembles.

Droste has held positions at Oklahoma State University, Oklahoma City Philharmonic, Oklahoma Youth Symphony, Austin Peay State University, and Liberty Union-Thurston School District (OH). Droste studied conducting at the Pierre Monteux School, the Oregon Bach Festival with Helmuth Rilling, as well as at other prominent conducting seminars. His primary conducting mentors include Gary Lewis, Larry Rachleff, and Michael Jinbo. Droste holds degrees from The Ohio State University and Texas Tech University.

The Maestro has selected the following repertoire for this year's orchestra:

Overture to *West Side Story* – Leonard Bernstein (Maurice Peress)

Cathedral – Dr. Kenneth Olson

Symphony No. 5 in E minor Mvt. I. Andante—Allegro con anima and

IV. Finale. Andante maestoso—Allegro vivace

By: Pyotr Ilyich Tchaikovsky

Leonard Bernstein was very conscious of creating an American musical idiom when he composed *West Side Story*. Originally titled *East Side Story*, the musical was conceived as a contemporary retelling of the *Romeo and Juliet* story by choreographer/director Robbins in 1949. Created in the spirit of the Broadway musical comedy, *West Side Story* represented a conceptual change in the genre. *West Side Story* is not the sunny stuff of musicals; it is a bleakly tragic story. Along with Rodgers and Hammerstein's *Oklahoma*, it pointed the way to American musical theater, a genre more diverse than mere musical comedy.

In *West Side Story*, dance is as important as the word; the energy of the characters' movements expresses what they are unable to say. The musical score is rife with nervous energy; it both speaks for the characters and frames the dance sequences. Bernstein composed music from a variety of genres with equal fluency in *West Side Story*: opera ("Tonight" ensemble), jazz ("Cool", "Jet Song"), Broadway ("I Feel Pretty", "Gee, Officer Krupke"), and Latin ("Maria", "America"). Bernstein, though he created an American idiom, used Wagner's conception of *gesamtkunstwerk* ("total artwork": a perfect synthesis of music, dance, poetry) and music-drama in the score. Although the *potpourri*-style overture gives a thematic overview of the show, it is as integral to the drama as Wagner's preludes. Rather than a cheery curtain raiser, we have grim music foretelling the tragedy to come.

This year the Louisiana All-State Orchestra will perform a contemporary piece by Louisiana composer Dr. Kenneth Olson. Kenneth Olson was born in 1950 in Georgia. From 1980 to 1986 he studied theory, composition and piano at the University of the Arts in Berlin, Germany. From 1988 to 1991 he studied in the Fine Arts Doctoral Program at Texas Tech University, earning a Ph.D. in Fine Arts with a major in composition. In the course of these studies he has won awards in composition competitions in Berlin, Munich, Dresden and Boston. In celebration of the tricentennial of Natchitoches, his work, *City of Lights*, a symphony for soprano and large orchestra, was performed by the Natchitoches-Northwestern Symphony Orchestra in September, 2014. For the past 25 years he has served on the faculty of the Louisiana School for Math, Science and the Arts. The piece, *Cathedral*, was composed to commemorate the construction of the Louisiana School's Center for Performance and Technology. It was premiered in 2009.

Pyotr Ilyich Tchaikovsky was inspired on both an emotional and financial level by his patron, Nadezhda von Meck – whom he quite astonishingly never met. Indeed, this was a condition of her patronage.

In the summer of 1888, Tchaikovsky wrote one of his many letters to her, in which he commented, "I don't know if I have already written that I have decided to write a symphony. At first progress was very arduous, but now illumination seems to have descended upon me. We shall see!" The work in question was this, his Symphony No. 5. It had been ten years since the fairly unsuccessful premiere of the Symphony No. 4 – admittedly punctuated by the composition of the Manfred Symphony in 1885 – and Tchaikovsky worked painstakingly hard to ensure that his latest symphonic creation received a favourable response.

Sadly, the reaction to the four-movement Symphony No. 5 was, at best, muted. Tchaikovsky felt incredibly dejected, even going so far as to distance himself from it for quite some time. After his death, however, the work grew in popularity, with audiences and critics alike acknowledging Tchaikovsky's great skill as an orchestrator and his powerful evocation of the idea of fate throughout the symphony. Today, it stands as one of his most loved large-scale creations.

This promises to be an exciting concert and an educational weekend for everyone involved. There will be several workshops specifically tailored to string teachers including one by Our 2015 All-State Conductor Douglas Droste entitled: "String Sound Production and Conducting: Working Together". We will also have Mark Wood from Electrify Your Strings conducting a workshop entitled: "Plug Your Ears In! Extreme Orchestra Makeover".

Mark Wood is an electric violinist, Emmy-winning composer, former member of the Trans-Siberian Orchestra as well as the founder of Wood Violins, a company that makes unique electric violins. Wood travels to over 60 schools annually all over the United States with his music education program Electrify Your Strings. The program brings together classical music with contemporary styles such as rock, jazz, and blues in order to provide a custom, hands-on learning experience. I hope you will plan on attending this year's LMEA Conference. I look forward to seeing everyone in Baton Rouge. Lastly as a reminder, there will be an Orchestra Division meeting that Saturday morning at 8:00a.m., please plan on attending this important meeting.



Dr. Kenneth Olson

## Collegiate MENC Chairman Ed McClellan

As we move into the 2015-2016 academic year, the Collegiate Division has planned a variety of events and activities! Louisiana Collegiate NAFME has a member page on Facebook. I urge music education students and NAFME Collegiate Advisors to “friend” this facebook page to stay current with the state organization. The address is:

<https://www.facebook.com/NAfME-Collegiate-Louisiana-187423564682172/timeline/>

### The NAFME Collegiate Summit Sunday, November 22 - Monday, November 23

The NAFME Collegiate Summit is a collaborative effort among the Louisiana Music Educators Association, university faculty, K-12 music educators, and retired music teachers to focus on the needs of undergraduate music education majors and beginning music teachers. The 2015 NAFME Collegiate Summit will have a very full schedule of professional development for college students, and beginning and veteran music teachers.



#### A few of the 2015 sessions will include:

- **Effective Pedagogy & Instruction Strategies in the Performance-Based Classroom**
- **Improvisation in the Beginning Strings Class**
- **Interactive Band and Music Class Teaching Demonstrations**
- **Best Practices of Maintaining Your NAFME Collegiate Chapter**
- **Jazz Pedagogy for the School Jazz Ensemble**
- **Kindermusik Teaching in the Elementary Music Classroom**
- **My Administrator Doesn't Speak "Music" – Translating Teacher Evaluation Rubrics and Classroom Strategies for the Music Class**
- **Networking Sessions for Collegiate NAFME Members and New Music Teachers**

#### Collegiate Pre-Registration Rates

Collegiate Music Education Summit Participants should take advantage of “early” conference pre-registration rates in planning to take part in this event. LMEA Conference “Pre-registration” for Collegiate Members is \$15. Pre-registration forms are available on the LMEA website (<http://www.lmeamusic.org/convention.html>).



### Collegiate & Director's Demonstration Band

**LMEA Conference: Monday, November 23rd @ 8 am**

**Premier Ballroom II/III**

**BYOI**

(Bring Your Own Instrument)

### **When Words Fail: Effective, Efficient, and Engaging Non-verbal Rehearsal Strategies**

Amanda Schlegel, PhD, University of Southern Mississippi

**Bring your instrument and music stand to participate in this rehearsal demonstration band.** Dr. Schegel will demonstrate and discuss multiple rehearsal techniques and strategies that maximize a variety of communication strategies. College students and Band Directors will read the concert music and “experience” the changes as they occur in real time in the ensemble.

To reserve your place, please register at <http://goo.gl/forms/ZG8INL0EtO>

### **Seventh Annual Music Teacher Education Luncheon**

**Sunday, November 22**

**12:00 p.m. Noon**

Music Education Faculty at colleges and universities across the state are invited to attend this informal luncheon banquet and meeting as part of the LMEA Conference. This social gathering of Music Teacher Educators is an opportunity to connect with other professionals, develop collegiality, exchange ideas, share in common practices, and examine ways to enhance music teacher training programs in Louisiana.

### **Research Presentation Session**

**Sunday, November 22**

**10:00 a.m.**

The Louisiana Music Educators Association is pleased to announce the presentation of research reports at the 2015 Research Poster Session at the LMEA Conference on November 22, 2015. University faculty, graduate students, and classroom music educators will present their research during this session in the Cypress I room. LMEA members in attendance at the state conference are invited to attend this presentation. These poster presentations will remain posted throughout Sunday and Monday during the conference for public viewing. Please accept this invitation to stop by Cypress I to review projects that influence music teaching and learning, pedagogy, and the music education profession.

### **In Closing**

I look forward to seeing you and your students at these events! Your support makes a difference in future excellence in music education throughout Louisiana. Please contact me should I be of assistance to you!

## Treasurer Red Stick Chapter AOSA Kelly Stomps

“Alone we are smart. Together we are brilliant”. – Stephen Anderson, Educator

The year for the Red Stick Orff Chapter is off to a great start! In August, we hosted a workshop in Hammond with Brent Holl from Beatin' Path Publications. The main focus of the workshop was the ostinato- a short, repeated phrase or rhythm. As Brent explained, the ostinato provides “immediate success” while creating opportunities for “complexity”. My favorite activity was creating in small groups ostinatos to accompany a proverb about chickens. After the meeting, I was moved to follow Brent's lead by asking my second graders to construct ostinatos for the proverb, “When the cats away, the mice will play”. Needless to say, the activity was a great hit!

In September, we hosted a sharing session in Lafayette where members of chapter took turns presenting, “Songs We Like to Sing”. From canons to composing melodies with yarn, there were many amazing lessons that were demonstrated. I especially loved the ideas for using a Hoberman Sphere to develop singing technique that were presented by Michael Ruybalid and Gina Anthon.

The Red Stick Orff Chapter has two more fabulous workshops ahead. We will have another sharing session in Baton Rouge on January 23, 2016. This session will be a “Make and Take” where the members will be making items and manipulatives that they can use in their classrooms. We are also excited to announce that Patrick Ware will be presenting in New Orleans on March 19, 2016. As Patrick specializes in jazz in the elementary classroom, I can't wait to glean new ways for incorporating jazz and improvisation into my curriculum. To find out more about Patrick Ware, please check out the following site: <http://www.beatinpathpublications.com/PW/home.html>.

Following the workshops by the Red Stick Orff Chapter, I always return to school with my head full of new activities that I can't wait to try. I hope that you may join us for our future workshops! To learn more about the Red Stick Orff Chapter, please visit [www.redstickorff.com](http://www.redstickorff.com).





## Public Relations President *Carolyn Herrington*

This year's conference is going to be great but it's even greater when YOU come! Once again we will have a full house in the exhibit hall with vendors from all over. We will be having some of our vendors stay thru Monday so remember to bring your PO numbers so you can shop. I'm inviting you now to be our guest in the exhibit hall and visit all the exhibitors that are coming there for you.

Listed are the Participating vendors:

J W Pepper

Art's Music Shop

World's Finest Chocolate

Fruhauf Uniforms

Stanbury Uniforms

Lafayette Music

Getzen Company

Quaver Music

Louisiana Bandmasters

Tempest Musical Instruments

Elvis Presley's Graceland

Fundraising With Simply Sheets

GQ Percussion, LLC

Alison's World of Music, Inc

Gulf South Travel

GIA Publications

Artistically Yours

Gulf Coast Fundraising

Louisiana-Mississippi Colorguard & Percussion Circuit



The colleges will be back again exhibit in the atrium outside the ballrooms. We are looking forward to a fantastic conference – so put us on your calendar today! Hope to see you soon.

## LAKE President *Casey B. Doucet*

Greetings! I hope your school year has gotten off to a great start! We have lots of exciting things planned for LAKE this year, and we hope you will be able to attend our events to put the puzzle together. We started with a wonderful workshop by Lamar Robertson on September 12, 2015 in Lafayette at the Acadiana Symphony Conservatory. We want to say a big THANK YOU to Jennifer Tassin for helping us organize the workshop at their wonderful facility.

The LMEA conference is up next on our list of events, and this year, LAKE is sponsoring Sandy Mathias. Mathias is the Director Emerita of the Columbus Children's Choir in Columbus, Ohio. Her areas of expertise are pedagogy, curriculum, children's choirs, pitch matching, vocal development, recorder, and orff instruments. Mathias has done extensive work with children's choirs, and is published many articles about finding and teaching choral repertoire to children. She will be presenting three sessions at the LMEA conference.

Our next workshop will be held on January 23, 2016. This workshop will focus on the music that is chosen for choral assessments. Some of our board members and other teachers will present how they will teach their chosen pieces, and how they can tie these pieces in with the LAKE Festival pieces. We hope you can attend this very informative workshop!

Our last event of this year is going to be the LAKE Festival held on April 30, 2016 at Lake Charles/Boston Academy of Learning in Lake Charles, LA where we will finish putting the puzzle together. Our clinician this year will be Kari Proksch. Proksch is the director of Les Petites Voix in Lake Charles, and she teaches at St. Margaret's Catholic School. She is also one of the instructors of the Kodály Institute at Lamar State University in Beaumont, TX. This festival is wonderful opportunity for your choir to perform for others, and to perform with others without the pressure of being judged. We ask that you prepare two pieces for your choir to perform, and the three pieces selected by the clinician. Those three pieces are "The Raggedy Man" by Melissa Keylock and Melissa Friedersdorf, "Inscription of Hope" by Z. Randall Stroope, and "Banjo Sam" by Jay Broecker. We hope you can join us for a wonderful morning of beautiful music making.

We hope to see you at one of our events this year! If you have any ideas or suggestions for our organization, please let us know. If you would like to be on our email list, please email me at [doucetcasey87@gmail.com](mailto:doucetcasey87@gmail.com). Also, if you have any question about becoming an OAKE member, or you want to study at a Kodály Institute, please feel free to contact me.



## *John W. Stafford* *Louisiana Music Educators Association* **2015 Hall of Fame Inductee**

John W. Stafford is a native of Elizabethton, TN, where his father had established the first band program in the public schools of the East Tennessee city in 1931. He graduated from Jena High School in Jena, LA in 1953, and obtained a Bachelors of Music Education from Southwestern Louisiana Institute (now University of Louisiana at Lafayette) where he met his future wife, Beverly Ann Mire (also a former band director for 30 years).

Upon completing his military obligation in the US Army, they married during his one-year tenure in St. Landry parish. They then began teaching classroom music and band in the elementary schools of Assumption parish. They have now been married for 56 years and are the parents of four children and grandparents of five children. Mr. Stafford obtained a Masters of Music Education from Louisiana State University in 1964.

After teaching in Assumption parish for nine years, he began teaching in Lafourche parish for the next 20 years; 10 years at West Thibodaux Junior High School and 10 years at Thibodaux High School. While at West Thibodaux Junior High his concert bands, wind ensembles, and stage bands consistently received Superior ratings at District and State Festivals. In 1975, the West Thibodaux Junior High Band was invited to perform at the Music Educators National Conference-Southern Division Convention in New Orleans.

John Stafford later taught at Thibodaux High Schools where his concert bands, wind ensembles, stage bands and marching bands consistently received Superior ratings at District and State Festivals. Some of the highlights while at Thibodaux High are as follows:

1981 - First Place at the Deep South Marching Band contest at the Louisiana Superdome.

1982 - First Place at a concert band contest in Orlando, FL.

1984 - First Place at a concert band contest at Winchester, VA.

1984 - Invited to represent Louisiana at the Bicentennial Celebration in Philadelphia, PA.

1985 - Invited to perform at the Band Director's Conference at Loyola University.

1987 - First Place at the Southern Regional Marching Band Contest at Louisiana Tech.



*Continued on next page*

Continued on from page 10

John Stafford was the District VII Band Director of the Year in 1972, 1976, and 1989. In 1977 he was named Band Director of the Year for the state of Louisiana by the International Band Director's Fraternity, Phi Beta Mu, Epsilon Chapter. In 1985, the Louisiana Band Director's Association (LBA) named him Band Director of the Year. In 2013, he was inducted into the District VII Band Director's Hall of Fame. He was the supervisor of student teachers for Nicholls State University for 14 years.

Since his retirement, he has conducted the Bayou Community Band, based in Thibodaux, for 24 years and performed professionally for 25 years with the Bayou Dixieland Jazz Band.

The Hall of Fame Induction Ceremony is scheduled for 3:00 PM on Saturday, November 21, 2015 in Baton Rouge at the Crowne Plaza Hotel. This event is on the program of the annual conference of the LMEA.

## William F. Grimes & James R. Miller III Louisiana Association of Jazz Educators 2015 Hall of Fame Inductees

**William F. Grimes** and **James R. Miller III** have been selected for induction to the Louisiana Association of Jazz Educators Hall of Fame in 2015. The award ceremony takes place preceding the LMEA All-State Jazz Ensemble performance at the annual LMEA State Music Conference. The public is invited to attend along with friends and families of the administrator.



Jazz educator **William F. Grimes** is the E. & D. White Professor of Jazz Studies and a widely respected virtuoso jazz bassist. Referred to by Gene Lees as . . . "a formidable bassist" . . . Grimes has worked with such jazz legends as Joe Pass, Randy Brecker, Bobby Shew, Terrance Blanchard, and Bill Dobbins. He has made numerous recordings, including an album entitled *Dream Dancing*, featuring his own trio, and a duo album with pianist Willis Delony entitled *Civilized Conversations*. His latest recording project is *Bill Grimes and Friends-Christmas Remembered*.

Grimes is one of the nation's leading pops orchestra arrangers — with more than 100 scores to his credit — and conductors. He is a regular conductor with the Mobile (AL) Symphony, and has led the Minnesota Orchestra, Louisiana Philharmonic Orchestra, and Baton Rouge Symphony on many occasions. He arranged and conducted an album of Gershwin classics, *S'Wonderful*, which featured trombonist Harry Watters and the Czech Philharmonic. His orchestral arrangements are routinely heard with The Beach Boys and jazz artist Byron Stripling.

A faculty member at LSU since 1984, Bill Grimes has developed the first Master of Music degree in Jazz Studies at LSU. His teaching duties include courses in Jazz History, Jazz Styles, and Jazz Pedagogy, as well as private improvisation instruction. His work with the LSU Jazz Ensemble has helped to build that ensemble into an outstanding performing group, specializing in mainstream and modern jazz repertoire. He served as a music administrator for the School of Music from 1993-2003, overseeing recruiting, financial aid, and the implementation of Board of Regents grants that funded graduate student tuition.

Grimes earned the Bachelor of Music degree from the Cincinnati College-Conservatory of Music, and graduate degrees, (MM, DMA) from the Eastman School of Music in Rochester, NY. He is a former student of bassist James Vandemark, and jazz artists Bill Dobbins and Rayburn Wright.



**James R. Miller III** held the position of Director of Bands at Catholic High School in Baton Rouge, Louisiana, from 1984-2004. During that time, his Jazz, Marching, and Symphonic Bands consistently received superior ratings in festivals throughout the South. Currently, Mr. Miller teaches at St. Joan of Arc Catholic School in LaPlace, Louisiana, with an enrollment of approximately 150 band members.

As a professional trombonist, J.R. has performed with such artists as Tony Bennet, Sammy Davis Jr., Doc Severinson, Mel Torme, Ella Fitzgerald, as well as

others. Active as a clinician and adjudicator, James R. Miller has served as President of the Louisiana Chapter of the International Association of Jazz Educators. He is a graduate of Loyola University and a member of the Louisiana Music Educators Association and the Louisiana Bandmasters Association. Many of Mr. Miller's former students perform professionally today.

### maroon tune PUBLICATIONS

ORIGINAL WORKS FOR CONCERT BAND

CUSTOM ARRANGING  
FOR MARCHING AND CONCERT BAND

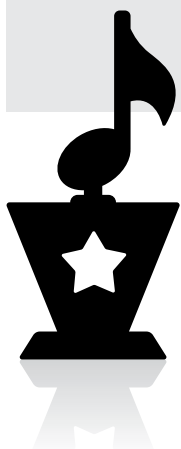
PUBLISHER OF  
**HONOR BAND SIGHT READING ETUDES**

- Includes all of the actual sight reading pieces written for the Louisiana All State Band auditions since 1996.
- An invaluable aid to band directors and private lesson instructors preparing students for honor band auditions.

[maroontune.com](http://maroontune.com)

Visit our website for recordings and ordering information.  
[cliftontaylor@maroontune.com](mailto:cliftontaylor@maroontune.com) 662.418.8224





## Outstanding Young Music Educator Award 2015 Recipients

Four young music educators have been recognized for outstanding merit in music education. To qualify for this honor educators must have taught no more than 5 years and have served their students, communities and profession in an exemplary manner. The nominee must have enthusiasm for teaching, love for music, and a desire to further the musical education of his or her students.

This year's recipients are: Nathan Trahan, *Ruston High School*; Carol Sikes, *West Monroe High School*; Nathan Sumrall, *Northshore High School*; and Cameron Weatherford, *Alexandria Senior High School*.

This is the fourth year for recognition of the young and very talented educators in the state of Louisiana. The "Outstanding Young Music Educator Award" will be presented to these recipients during the LMEA conference in November.

# Congratulations!

## Outstanding Administrator Award 2015 Recipient

One Louisiana Principal has been selected as recipient of the LMEA Outstanding Administrator Award for 2015. This is the fourteenth time in the past eighteen years that such recognition has been made by the Louisiana Music Educators Association.

LMEA annually accepts nominations based on the criteria published in the February Issue of *The Louisiana Musician*. The nomination form and criteria can also be found on the LMEA website ([lmeamusic.org](http://lmeamusic.org)). The award ceremony takes place preceding an All-State performance at the annual State Music Professional Development Conference. The public is invited to attend along with friends and families of the administrator.

Jarod W. Martin is the Principal of Lockport Middle School in Lockport, Louisiana. Prior to his appointment at Lockport, Mr. Martin served as a teacher at Houma Junior High School and as an Assistant Principal at Evergreen Junior High School. In addition to his educational service, Mr. Lockport has served as an officer in the Louisiana Army National Guard since 1994. During his tenure in the Guard, he has earned the Bronze Star, the Meritorious Service Medal, the Combat Infantry Badge, and the Iraqi Campaign Medal (2).

In fulfilling his educational administrative roles, Mr. Martin has been personally active in the development and expansion of school schedules in support of the music programs. He has more than a vision of expanding music curriculum. He has developed long range plans and has provided the necessary support and funding to implement these plans. He has made excellence and public recognition of music a high priority in the school and community. In his work, he has proven himself to be more than just an advocate. He gets results that directly benefit music education.

Under Mr. Martin's supervision, the music programs have excelled at district and state levels receiving Superior ratings. Also, many students have been selected for the District VII Honor groups in all categories.

One sample of Mr. Martin's hands-on support can be found in his personal involvement in music events, fund-raisers, performances and activities. This same level of commitment and leadership is exhibited throughout the school to all students, faculty and staff."

Key to his philosophy in raising academic standards is his belief that participation in music is fundamental to the process of improving student achievement. Both from his office and in the public eye, Mr. Martin has elevated the success of music, been a visible and enthusiastic supporter of the students, and implemented a strong vision of music programs.



## 2016 Louisiana State Teacher of the Year Kelly Stomps

Kelly Stomps is the 2016 Louisiana State Teacher of the Year. Although she is a native of Alabama, Ms. Stomps was first drawn to Louisiana because of the quality musical programs offered at Louisiana State University. While studying percussion at LSU, Ms. Stomps was a member of various musical ensembles including the Jazz Lab Band, the Percussion Ensemble, and she was on the Drumline in the Golden Band from Tigerland. She received her Bachelor of Music Education from LSU in 2000. In 2005, Ms. Stomps received her Master of Music from LSU where she primarily focused on integrating technology into her music lessons. In addition, Ms. Stomps has completed training in the Level One and Level Two Orff-Schulwerk approach to teaching music. Ms. Stomps was won over by the music, culture, and the people of Louisiana, and she officially made it her home while teaching music for the last 15 years. Ms. Stomps currently teaches classroom music and strings at Woodlake Elementary School in St. Tammany Parish.

Ms. Stomps has received many awards during her years of service. She has been named an Educator of Distinction by the Louisiana Parent Teacher Association, and she received the Louisiana Citizenship Educator Award from the Veteran of Foreign Wars. The Mandeville Rotary Club has twice named her their "Educator of the Year" while she recently was named a Distinguished Educator by the American Petroleum Institute.







McNeese State University™

# *BANDS*



Band service awards / scholarships are available to students regardless of academic major



## Upcoming Premier Events:

All-Star High School Marching Band Day  
September 12, 2015

Showdown @ Sundown Marching Festival  
October 31, 2015

Regional High School Honor Band  
February 25-27, 2016

Visit Us at: [www.mcneesebands.com](http://www.mcneesebands.com)



@McNeeseBands



McNeeseStateUniversityBands



McNeesebands.com

**2016  
Schools Fine Arts  
Festival Series  
EBR & Contiguous  
Parishes**

**Visual Arts Exhibit Opening  
& Awards**

February 4<sup>th</sup> ~ 6 PM ~ EBRPL Main  
Library

**Elementary Schools Festival  
Showcase**

February 11<sup>th</sup> ~ 9 AM McKinley  
Middle Magnet

**Middle Schools Festival Showcase**

February 18<sup>th</sup> ~ 9 AM~ Scotlandville  
Magnet H.S.

**High Schools Festival Showcase**

February 25<sup>th</sup> ~ 9 AM ~ BRCC  
Magnolia Performing Arts



**DEBOSE FOUNDATION, INC.**

**P.O. Box 64614**

**Baton Rouge, LA 70896**

[www.thedebosfoundationinc.com](http://www.thedebosfoundationinc.com)

[www.debosefinearts-competition.com](http://www.debosefinearts-competition.com)

[www.debosenationalpianocompetition.org](http://www.debosenationalpianocompetition.org)

Email: [debosefestival@aol.com](mailto:debosefestival@aol.com)

**2016  
National Piano  
Competition  
Solo & Duet Performance**

**May 7<sup>th</sup>**

**Pre-College Division ~ 8 AM**

**Southern University**

**DeBose Music Building**

**Recitals/Concerts**

**1 PM ~ Community Piano**

**Studios Recital**

**3 PM ~ Teachers Studio**

**Honors Recital**

**6 PM ~ DeBose Artist Recital**

**Charles Pettaway, Pianist - PA**

**7:30 PM ~ Awards**

**Recital Ceremony**

**Scotlandville Magnet**



**"The Friendly Music Store"**

**3700 Johnston St. \* Lafayette LA 70503**

**Phone: (337) 984-3700**

**Toll Free: (800) 999-1625**



**Stanbury**  
**UNIFORMS**

**WILL GREEN**

**Louisiana Representative**

**Cell: (337) 277-7791**

**[musicmanwg@yahoo.com](mailto:musicmanwg@yahoo.com)**

**YAMAHA • KING • SELMER-BACH • LUDWIG • GEMEINHART  
LEBLANC-HOLTON • BOOSEY & HAWKES • PEARL • PREMIER • CONN  
BUFFET • JUPITER • ROSS • DINKLES • DIRECTOR'S SHOWCASE • STYLE PLUS**





# TECH *Music*

LOUISIANA TECH UNIVERSITY

**Our students are...**

**T**ALENTED  
**E**NGAGED  
**C**REATIVE  
**H**IGH ACHIEVING

## **Bachelor of Arts-Music** **Concentrations**

**Education/Performance/Liberal Arts/Composition**

***BRING YOUR PASSION FOR MUSIC  
TO LOUISIANA TECH!***

visit our website  
to schedule an audition and campus visit  
**[music.latech.edu](http://music.latech.edu)**

for more information email:  
**[musicstudy@latech.edu](mailto:musicstudy@latech.edu)**

***Come find out what all  
the excitement is about!***

*Accredited by the National Association of Schools of Music.*



**LOUISIANA TECH UNIVERSITY**

Schedule a visit with us today online at **[admissions.latech.edu/visit](http://admissions.latech.edu/visit)**  
or call **1-800-LATECH**. Follow us on Facebook and Twitter!



LouisianaTechUniversityDepartmentofMusic



@LaTechMusic



### LMEA State Conference 2015

The 2015 LMEA State Conference and All-State activities will be held in Baton Rouge, LA, in the convention center of The Crowne Plaza Hotel. The dates are Thursday, November 19, 2015 through Monday, November 23, 2015.

### LMEA 2015 Conference Pre-Registration

*For LMEA members who do not have All-State Participants*  
(This form must be postmarked no later than Nov. 13, 2015)

Name \_\_\_\_\_

School \_\_\_\_\_ LMEA District \_\_\_\_\_

Email Address \_\_\_\_\_

School Address \_\_\_\_\_

Phone \_\_\_\_\_ LMEA/NAfME# \_\_\_\_\_

Rank your areas of interest, beginning with your most important teaching area as #1.

\_\_\_Elementary \_\_\_Vocal \_\_\_Band \_\_\_Jazz \_\_\_Orchestra

\_\_\_Music Supervision/Administration \_\_\_Higher Education

\_\_\_Other \_\_\_\_\_

LMEA Member Pre-Registration = \$60

LMEA Member Registration at Conference = \$75

Retired LMEA Members = no registration fee

Collegiate Student Member Fee = \$15

-----  
***Send this form and the pre-registration fee to Sara Bidner, Registration Chair, by the appropriate deadline indicated above. Make Check Payable to LMEA.***

Sara Bidner, Registration Chair  
5840 Glen Cove Drive  
Baton Rouge, LA 70809

-----  
If you are eligible for a 25-year membership pin, please enclose the following form.

### LMEA 25 Year Service Pin

#### Deadline for Service Pin Notification: Postmarked November 13, 2015

LMEA will present a 25 year service pin to any member who has completed 25 years of active membership in NAfME/LMEA. In order to receive the pin, you must complete this form and enclose it with your registration.

Pins will be presented prior to the All-State Choir Performance on Saturday, November 21, 2015, or at the All-State Concert Band Concert on Monday, November 23, 2015.

Name \_\_\_\_\_

Address \_\_\_\_\_

Phone \_\_\_\_\_

E-mail address \_\_\_\_\_

Years/Dates of Membership \_\_\_\_\_ to \_\_\_\_\_

Concert at which you prefer to receive your 25-year pin (please check):

\_\_\_ All-State Choir Concert, Saturday, November 21, 3:15 p.m.

\_\_\_ All-State Concert Band Concert, Monday, November 23, 2:00 p.m.

Send completed form to:

Sara Bidner  
5840 Glen Cove Drive  
Baton Rouge, LA 70809

# The 2015 Louisiana Music Educators Association Annual State Music Conference

## Crowne Plaza Hotel, Baton Rouge, Louisiana

### November 19-23, 2015

Sharon McNamara-Horne, President    Bruce Lambert, Executive Director    James Hearne, Program Chairman

#### All-State Conductors and Featured Clinicians

Symphonic Band: *Robert Sheldon is an internationally renowned composer and educator.*  
 Concert Band: *Jeff Cannon directed award winning bands in Mississippi and also served as President of the Mississippi Band Master's Association.*  
 Mixed Choir: *Dr. Roland Carter is Professor Emeritus at the University of Tennessee at Chattanooga.*  
 Women's Choral: *Angie Rawls is the Director of Choirs at Pearl High School in Mississippi.*  
 Orchestra: *Douglas Droste is the Artistic Director of the Muncie Symphony Orchestra and Director of Orchestras at Ball State University.*  
 Jazz: *Jack Wilkins is the Director of Jazz Studies at the University of South Florida.*

#### LMEA Hall of Fame Inductee

John W. Stafford *is a retired music educator who produced many award-winning bands at West Thibodaux Jr. High School and Thibodaux High School.*

#### LAJE Hall of Fame Inductees

William F. Grimes *is the E. & D. White Professor of Jazz Studies and a widely respected virtuoso jazz bassist.*  
 James R. Miller III *is Director of Bands at St. Joan of Arc Catholic School, the former Director at Catholic High School and a professional trombonist.*

#### Outstanding Young Music Educator Award

Nathan Trahan, *Ruston High*; Carol Sikes, *West Monroe High*; Nathan Sumrall, *Northshore High*; and Cameron Weatherford, *Alexandria Senior High.*

#### Outstanding Administrator Award

Jarod Martin *is Principal at Lockport Middle School in Lockport, Louisiana.*

#### Louisiana Teacher of the Year

Kelly Stomps *is a classroom music and strings teacher at Woodlake Elementary School in St. Tammany Parish*

#### Clinics, Meetings, and Exhibits

Twenty clinics for Elementary and Vocal Divisions, *twenty-three* clinics for the Band, Jazz and Orchestra Divisions, *eleven* clinics for Collegiate NAFME Division/General Sessions, *seventeen* business meetings for organizations and divisions, and *thirty-two* exhibits by vendors/colleges.

#### Concerts and Guest Performances

<i>The Louisiana All-State Mixed Choir</i> <i>The Louisiana All-State Women's Choral</i> <i>The Louisiana All-State Jazz Ensemble</i> <i>The Louisiana All-State Orchestra</i> <i>The Louisiana All-State Concert Band</i> <i>Louisiana All-State Symphonic Band</i> <i>McNeese State University Wind Ensemble</i> <i>Centenary College Choir and Camerata</i> <i>Northwestern State University Jazz Ensemble</i>	Conductor: Roland Carter Conductor: Angie Rawls Conductor: Jack Wilkins Conductor: Douglas Droste Conductor: Jeff Cannon Conductor: Robert Sheldon Conductor: Dr. Jay Jacobs Conductor: Dr. David Hobson and Dr. Cory D. Wikan Conductor: Galindo Rodriguez
	Chairman: Mike Townsend Chairman: Mike Townsend Chairman: Lee Hicks Chairman: Katrice LaCour Chairman: Daphne Richardson Chairman: Richard Bresowar

#### Demonstration Band for Clinic

Directors' Rehearsal/Demonstration Band – NAFME Collegiate Summit – Music courtesy of J.W. Peppers, Conductor/Clinician: Amanda L. Schlegel, U. of Southern Miss.

## Guest Clinicians for Elementary and Vocal Divisions

*Chris Murphy* is a member of the Quaver Team who has performed on stage and screen as a singer/songwriter and actor for over 20 years.  
*Charlotte Mizener* is a Professor of Music in the Mary Morgan Moore Department of Music at Lamar University in Beaumont, Texas.  
*Michael Ruybalid* is a teacher of early childhood and elementary music methods at Southeastern Louisiana University in Hammond, LA.  
*Dr. Sandy Mathias* is Professor Emerita of Capital University, where she served as Professor of Vocal Music Education for 29 years. (Sponsored by LAKE.)  
*Bryan Burton* is Professor and Chair of Music Education at West Chester University.  
*Ann L. McFarland* is a recently retired Associated Professor of Music Education at West Chester University.  
*Dr. John Feierabend* is a Professor of Music Education at The Hartt School of Music at the University of Hartford.  
*Dr. Judith A. Sullivan* is Associate Professor and Coordinator of Music Education at Tennessee Technological University.  
*Cameron Weatherford* is the Choral Director at Alexandria Senior High School.  
*Monte Garrett* is Professor of Music and Director of Choral Activities at Howard Payne University, Brownwood, TX.  
*Dr. Mark Malone* is Coordinator of Music Education and Professor of Music in the Winters School of Music at William Carey University in Hattiesburg, MS.  
*Dr. Melissa Brunkan* is Assistant Professor of Music Education at Louisiana State University in Baton Rouge.  
*Dr. Trey Davis* is the Associate Director of Choral Studies at Louisiana State University in Baton Rouge, LA.

## Guest Clinicians for Band, Jazz Ensemble and Orchestra Divisions

*Mark Wood* is a recording artist, performer, producer, inventor, Emmy-winning composer and music education advocate.  
*Brian Shaw* is the Carruth Associate Professor of Trumpet and Jazz Studies at LSU and the Principal Trumpet of the Baton Rouge Symphony.  
*Joseph Nassar* is Assistant Band Director at St. Amant High School in St. Amant, Louisiana.  
*Andrew Hunter* is on faculty in the School of Music at the University of Southern Mississippi conducting the Symphonic Winds and University Band.  
*Marcia Neel* is President of Music Education Consultants and is the former Fine Arts Supervisor for Clark County School District.  
*Eric C. Melley* is the Assistant Director of Bands and Director of the “*Pride of Acadiana*” Marching Band at the University of Louisiana at Lafayette.  
*Steven Menard* is Principal trombone with the Baton Rouge Symphony, and a member of the Utah Festival Opera.  
*Amanda L. Schlegel* is an Assistant Professor of music education at the University of Southern Mississippi.  
*Kevin Rabon* is the Director of Bands at Cope Middle School in Bossier City, Louisiana and a noted member of the Phantom Regiment staff.  
*Amanda Stevenson* is the Director of Bands at William H. Taft High School in San Antonio, TX.  
*Christopher Drew Dickey* is Arts and Technology Curriculum Facilitator at the Southwood Academy of the Arts and Associate Director of Bands at Westside High School.  
*Douglas Bakenhus* is the music director of the Natchitoches-Northwestern Symphony at Northwestern State University of Louisiana.  
*Robbie Freeman* is Director of Bands at West Monroe High School and a former member of the Phantom Regiment. (Session Sponsored by Phi Beta Mu.)  
*Dr. Kyle Glaser* is the Associate Director of Bands at Texas State University where he directs the Symphonic Winds and athletic bands.  
*Brett Babineaux* is Director of Bands at Broussard Middle School in Lafayette, LA and District Director for LMEA District III.  
*Dr. Adrianna Marshall* is an Assistant Professor in Music Education at Western Illinois University.  
*Eric W. Richards* is Director of Bands and Assistant Professor of Music at Delta State University in Cleveland, MS.  
*Jan Scott* is a professor of clarinet/double reeds, woodwind techniques, and music education at McNeese State University.

## Guest Clinicians for NAFME Summit for Collegiate Members/Advisors and General Sessions

*Dr. Gordon Towell* is Coordinator of Jazz Studies at Loyola University in New Orleans.  
*Madeline Thibodeaux* is a noted instructor of “Kindermusik” as well as a private instructor for many brass instruments.  
*Olivia Seal* is a teacher of Group theory for the Loyola Preparatory Arts Program as is a certified “Kindermusik” instructor.  
*Michelle Wilkinson-Nelson* is the current President of the Louisiana Chapter of the American String Teachers Association.  
*Ginny Medina-Hamilton* is Assistant Principal at Lakewood Elementary School in the St. Charles Parish Public School System.  
*Dr. Edward McClellan* is the Mary Freeman Wisdom Distinguished Professor of Music and Coordinator of Music Education at Loyola University.  
*Outstanding Educators* will include the current recipients of the LMEA Outstanding Young Music Educator award.  
*Demonstration Band* will be composed of directors from around the state and led by Amanda Schlegel.  
*Annie Young-Bridges* is a full-time string instructor in St. Tammany Parish School District.



**Louisiana Music Educators Association  
2015 Professional Development Conference  
Crowne Plaza Hotel  
Baton Rouge, La.**

Sharon McNamara-Horne, President  
Bruce Lambert, Executive Director  
James Hearne, Conference Chairman

November 19-23, 2015

**THURSDAY**

12:00-12:30 pm  
12:30-5:00 pm  
1:00-2:30 pm  
2:30-5:00 pm  
3:00-3:50 pm

4:00-4:50 pm

5:00-6:00 pm

5:30-9:15 pm  
5:30-6:00 pm  
6:30-7:30 pm  
6:20-9:00 pm  
7:30-8:20 pm

8:00-10:30 pm

**FRIDAY:**

**Friday Morning:**

8:00 am-12:00 pm  
8:00-8:50 am

8:30-9:00 am

8:50-11:20 am  
9:00-9:50 am

9:00-9:50 am

8:50-11:30 am  
10:00-10:50 a.m.

10:00 am -12:00 pm

11:00-11:50 a.m.

11:00 a.m.-4:00 p.m.

**Friday Noon:**

12:00-12:50 p.m.

**Friday Afternoon**

1:00-4:00 p.m.  
1:00-1:50 p.m.

1:00-1:50 p.m.

12:50-3:50 p.m.  
12:50-5:00 p.m.

**Women's Chorale Registration (Chaperones Only)**

**Women's Chorale Rehearsal**

**LAKE Board Meeting**

**Conference Registration**

**Elementary Division Clinic**

Consultant: Chris Murphy, Quaver Music

Topic: *Teaching Can Be Fun Again With Quaver!*

**Elementary Division Clinic**

Consultant: Charlotte Mizener, Lamar University

Topic: *Getting to the CORE of Mathematics through Music*

**Elementary Division Clinic**

Consultant: Michael Ruybalid, Southeastern Louisiana University

Topic: *Early Childhood Music through Multiple Lenses*

**Mixed Choir Rehearsal**

**Mixed Choir Registration (Chaperones Only)**

**Conference Registration**

**Women's Chorale Rehearsal**

**Elementary Division Clinic**

Consultants: Dr. Sandy Mathias, Professor Emeritus Capital University

Title: *Developing Part Singing in Grades K-6*

Sponsored by: *Louisiana Association of Kodály Educators*

***LMEA Social for Elementary and Vocal Music Teachers***

**Conference Registration**

**Elementary Division Clinic**

Consultant: Bryan Burton, West Chester University of Pennsylvania

Topic: *Musical Games from Around the World*

**Collegiate Exhibits open to LMEA Members and All-State Groups**

**(Available for Women's Chorale 8:30-9:00 a.m.)**

**Women's Chorale Rehearsal**

**Vocal Division Clinic**

Consultant: Cameron Weatherford, Alexandria Senior High

Topic: *It Gets Better! A Session for New Teachers*

**Elementary Division Clinic**

Consultants: Dr. Sandy Mathias, Professor Emeritus Capital University

Title: *Teacher Preparation for Teaching a Choral Piece to Insure Student Success*

Sponsored by: *Louisiana Association of Kodály Educators*

**Mixed Choir Rehearsal**

**Vocal Division Clinic**

Consultant: Dr. Mark Malone, William Carey University

Topic: *Sight-Reading 101*

**Elementary Division Clinic**

Consultant: Dr. John Feierabend, The Hartt School of the  
University of Hartford

Topic: *"First Steps in Music" – Vocal Development for Pre-K – 3<sup>rd</sup> Grade*

*"First Steps in Music" – Movement Development for Pre-K – 3<sup>rd</sup> Grade*

**Vocal Division Clinic**

Consultant: Monte Garrett, Howard Payne University

Topic: *Programming for a Thematic Choral Concert*

**General Exhibits Open to General Membership**

Red Stick Orff and LAKE BYO Luncheon and Fellowship

**Conference Registration**

**Guest Performance Choir: Centenary College Choir and Camerata**

Conductor: Dr. David Hobson and Dr. Cory D. Wikan

**Elementary Division Clinic**

Consultant: Bryan Burton, West Chester University of Pennsylvania

Topic: *Discovering a World of Music in Your Community's Backyard*

**Women's Chorale Rehearsal**

**Mixed Choir Rehearsal/All-State Activities**

2:00-4:00 pm	<b>Elementary Division Clinic</b> Consultant: Dr. John Feierabend, The Hartt School of the University of Hartford Topic: <i>Tuneful, Beatful, and Artful Movement for Upper Elementary</i> <i>Tuneful, Beatful, and Artful Singing for Upper Elementary</i>
2:00-2:50 p.m.	<b>Vocal Division Clinic</b> Consultant: Dr. Mark Malone, William Carey University Topic: <i>Teaching Improvisation and Creativity in conjunction with the New National Standards of Music Education</i>
3:00-3:30 p.m.	<b>Collegiate Exhibits open to LMEA Members and All-State Groups</b> <b>(Available for Mixed Choir 3:00-3:30 p.m.)</b>
3:00-3:50 p.m.	<b>Vocal Division Clinic by All-State Choir Conductor</b> Consultant: Dr. Roland Carter, University of Tennessee at Chattanooga Topic: <i>Rehearsal Techniques</i>
3:30-4:00 p.m.	<b>Orchestra Registration</b>
4:00-5:30 p.m.	<b>Orchestra Sectional Auditions</b>
4:00-5:00 p.m.	<b>All-State Women's Chorale Concert</b> Conductor: Angie Rawls – Pearl, Mississippi
5:00-6:30 pm	<b>Conference Registration</b>
5:00-6:30 pm	<b>General Exhibits Open to General Membership</b>
<b>Friday Evening:</b>	
6:00-6:50 pm	<b>Guest Performance Orchestra:</b> TBA
6:00-6:30 pm	<b>Jazz Band Registration</b>
6:30-10:00 pm	<b>Jazz Band Rehearsal</b>
6:30-7:20 pm	<b>General Session</b> Consultant: Chris Murphy, Quaver Music Topic: <i>Do Mobile Devices and Music Class Go Together?</i>
6:30-7:20 pm	<b>Elementary Division Clinic</b> Consultant: Dr. Sandy Mathias, Professor Emeritus Capital University Topic: <i>Empowering Students to Become Independent Readers</i> Sponsored by: <i>Louisiana Association of Kodály Educators</i>
6:50-9:15 p.m.	<b>Mixed Choir Rehearsal</b>
7:30-8:20 p.m.	<b>Elementary Division Clinic</b> Consultant: Judith A. Sullivan, Tennessee Technological University Topic: <i>Music Class Begins at the Door! Striving to Make Every Minute Musical</i>
7:30-10:00 pm	<b>Orchestra Winds and Percussion Sectional Rehearsal</b>
7:30-10:00 pm	<b>Orchestra String Sectional Rehearsal</b>
<b>SATURDAY</b>	
<b>Saturday Morning:</b>	
8:00 a.m.-12:00 Noon	<b>Conference Registration</b>
8:00-9:00 a.m.	<b>Orchestra Division Business Meeting</b>
8:15-8:50 a.m.	<b>Vocal Division Business Meeting</b>
8:00-8:50 am	<b>Elementary Division Clinic</b> Consultant: Dr. Sandy Mathias, Professor Emeritus Capital University Topic: <i>Choral Curriculum Planning for a Program, a Year and Each Concert</i> Sponsored by: <i>Louisiana Association of Kodály Educators</i>
8:50-11:30 a.m.	<b>Mixed Choir Rehearsal</b>
9:00-9:50 a.m.	<b>Jazz Clinic by All-State Jazz Conductor</b> <b>(Required for All State Jazz Band)</b> Consultant: Jack Wilkins, University of South Florida School of Music Topic: <i>Ideas and Methods for improving your Jazz Band: Improvisation, Rhythm Sections and Style</i>
9:00-10:00 a.m.	<b>Collegiate Exhibits open to LMEA Members and All-State Groups</b> <b>(Available for Orchestra 9:00-10:00 a.m.)</b>
9:00-9:50 a.m.	<b>Orchestra Division Clinic by Orchestra All-State Conductor</b> Consultant: Douglas Droste, Artistic Director of the Muncie Symphony Orchestra and Director of Orchestras at Ball State University Topic: <i>Rehearsal Techniques</i>
9:00-11:00 am	<b>Elementary Division Clinic</b> Consultant: Dr. John Feierabend, The Hartt School of the University of Hartford Topic: <i>Conversational Solfege – Level 1 for All Levels: Elementary, Middle and High School</i> <i>Conversational Solfege – Level 2 for All Levels: Elementary, Middle and High School</i>
10:00 a.m.-2:45 pm	<b>General Exhibits open to LMEA Members and All-State Groups</b>
10:00-10:50 a.m.	<b>Vocal Division Clinic</b> Consultant: Dr. Melissa Brunkan and Dr. Trey Davis Topic: <i>Choral Strategies: Fostering Efficient Vocal Technique and Musicianship through Warm Ups</i>
10:00 a.m.-12:00 noon	<b>Jazz Band Rehearsal</b>
10:00 a.m.-12:00 noon	<b>Orchestra Rehearsal</b>
11:00-11:50 a.m.	<b>Orchestra Division Clinic</b> Consultant: Mark Wood, Electrify Your Strings, Inc. Topic: <i>Plug Your Ears In! Extreme Orchestra Makeover</i>
11:20-11:50 a.m.	<b>Elementary Division Business Meeting</b>

**Saturday Noon:**

12:00 noon-1:00 p.m.

**Saturday Afternoon:**

12:50-2:45 p.m.

1:00-3:00 p.m.

1:00-1:30 p.m.

12:15-1:10 p.m.

1:30-3:00 pm

1:30-3:00 pm

2:00-3:00 pm

3:00-5:00 pm

1:30-3:00 pm

3:00-4:00 pm

2:55-3:00 pm

3:00-3:05 pm

3:00-3:05 pm

3:10-4:00 pm

4:00-6:00 pm

4:00-6:00 pm

4:00-4:30 pm

4:00-4:30 pm

**Saturday Evening:**

6:00-10:00 pm

6:00-10:00 pm

6:00-10:00 p.m.

6:00-6:45 pm

7:00-7:50 p.m.

7:00-7:50 p.m.

7:00-10:00 p.m.

9:00-11:00 p.m.

**SUNDAY****Sunday Morning:**

7:30-8:00 a.m.

8:00-8:50 a.m.

8:00-8:50 a.m.

8:00 -8:50 a.m.

8:30-11:00 a.m.

8:30-11:30 a.m.

9:00-9:30 a.m.

9:00 a.m.-12:00 Noon

9:00 a.m.-2:00 p.m.

9:30-10:20 a.m.

9:30-11:30 a.m.

9:00-11:00 am

9:30 -10:20 a.m.

10:00-10:50 a.m.

**Past Presidents and Hall of Fame Luncheon****Mixed Choir Rehearsal****Conference Registration****Annual General Membership Business Meeting****LAJE Executive Board Meeting****Orchestra String Sectionals****Orchestra Wind and Percussion Rehearsal****LBA Board of Directors Meeting****Orchestra Rehearsal****Jazz Band Rehearsal****Jazz Band Sectionals****Outstanding Young Music Educator Award***Awardees:**Nathan Sumrall, Choral Director Northshore High School**Nathan Trahan, Choral Director Ruston High School**Cameron Weatherford, Choral Director Alexandria Senior High***Hall of Fame Presentation***Inductee:* John W. Stafford*Presenter:* Catherine Heard, LMEA Hall of Fame Member**2016 Louisiana Teacher of the Year***Awardee:* Kelly Stomps, Woodlake Elementary-St. Tammany Parish*Presenter:* Ben Heroman, Louisiana Dream Teachers**All-State Choir Concert***Conductor:* Dr. Roland Carter, University of Tennessee at Chattanooga**Conference Registration****General Exhibits open to General Membership****Symphonic Band Registration****Concert Band Registration****Symphonic Band Rehearsal****Concert Band Rehearsal****Jazz Band Rehearsal****Guest Performance Jazz: Northwestern State University Jazz Orchestra***Conductor:* Galindo Rodriguez**Jazz Division Clinic****(Required for All State Jazz Band)***Consultant:* Dr. Brian Shaw, Louisiana State University*Topic:* "Keeping All the Plates Spinning: Strategies for Trumpet Versatility"**Band Division Clinic***Consultant:* Jan Scott, McNeese State University*Topic:* Clarinet Problems Solved!**Orchestra Rehearsal****LAJE/LMEA Social with "Special Guests" Jazz Performance***Sponsored:* Louisiana Association of Jazz Educators**Church Services****General Session***Consultant:* Annie Young-Bridges*Topic:* Therapeutic Yoga for Musicians**Band Division Clinic***Consultant:* Joseph Nassar, St. Amant High School*Topic:* How (NOT) to Make a V at Festival**Band Division Clinic***Consultant:* Andrew Hunter, University of Southern Mississippi*Topic:* Big Things from Small Groups: Defining Expectations in Rehearsal and Performance**Concert Band Rehearsal****Symphonic Band Rehearsal****Band Division Business Meeting****Conference Registration****General Exhibits Open to General Membership****Jazz Division Clinic***Consultant:* TBA*Topic:* TBA**Jazz Band Rehearsal****Orchestra Rehearsal****Phi Beta Mu Business Meeting****General Session – Research Presentations***Consultant:* Dr. Edward McClellan, Associate Professor,

Mary Freeman Wisdom Distinguished Professor of Music,

Loyola University New Orleans

*Topic:*

Research Presentations



11:00 a.m.-12:00 noon	<b>Band Division Clinic by All-State Concert Band Conductor</b> Consultant: Jeff Cannon – Pearl, Mississippi <i>Topic:</i> My Band is Going to Japan Next year, is Yours?
11:00 a.m-11:30 am	<b>Collegiate Exhibits Open to All-State Group and Membership</b> (Available for Concert Band at this time)
11:30 a.m.-12:00 noon	<b>Collegiate Exhibits open to All-State Group and Membership</b> (Available for Jazz Band at this time)
<b>Sunday Noon:</b> 12:00 noon–1:00 p.m.	<b>CNAfME/Music Teacher Education BYO Lunch and Meeting</b>
<b>Sunday Afternoon:</b> 1:00-3:00 p.m.	<b>Conference Registration</b>
1:00-1:50 p.m.	<b>Band Division Clinic by All-State Symphonic Band Conductor</b> Consultant: Robert Sheldon <i>Topic:</i> TO MUSIC AND BEYOND!
1:00-1:40 pm	<b>Collegiate Exhibits Open to All-State Group and General Membership</b> (Available for Symphonic Band at this time)
1:00-1:50 pm	<b>CNAfME Summit General Session</b> Consultants: Open Round Table Discussion Lead by NAFME Collegiate Chapter Officers, Participation by Music Education Students from Louisiana College & Music Education Programs <i>Topic:</i> How to Keep Your Life Together and Still Be a Productive Music Education Major
12:30-1:30 pm	<b>Orchestra Rehearsal</b>
1:30-5:00 pm	<b>Concert Band Rehearsal</b>
1:30-2:20 pm	<b>All-State Orchestra Concert</b> <i>Conductor:</i> Douglas Droste, Artistic Director of the Muncie Symphony Orchestra and Director of Orchestras at Ball State University
2:00-2:50 pm	<b>CNAfME Summit General Session</b> Consultant: 2015 LMEA Outstanding Young Music Educator Recipients: Carol Sikes, Nathan Trahan, Cameron Weatherford and Nathan Sumrall <i>Topic:</i> LMEA Outstanding Young Music Educator Panel: The 1 <sup>st</sup> 5 Years
2:00-2:50 pm	<b>Band Division Clinic</b> Consultant: Marcia Neel, Music Education Consultants, Inc. <i>Topic:</i> A Guide for Instrumental Music Educators: Secret TIPS Revealed from Teaching Legends and Leading Music Educators
2:00-3:00 pm	<b>Jazz Band Rehearsal</b>
2:00-3:30 p.m.	<b>CBDNA Business Meeting</b>
2:00-5:00 p.m.	<b>Symphonic Band Rehearsal</b>
3:00-3:50 p.m.	<b>Band Division Clinic</b> Consultant: Eric C. Melley, University of Louisiana at Lafayette <i>Topic:</i> Beyond Performing: Creating, Responding and Connecting in the Ensemble Classroom
3:00-3:50 p.m.	<b>Band Division Clinic</b> Consultant: Steven Menard, Louisiana State University <i>Topic:</i> Building a Better Brass Section: Keep it Simple!
4:00-4:50 p.m.	<b>CNAfME Summit General Session</b> Consultant: Madeline Thibodeaux, Thibodeaux School of Music Olivia Seal, Loyola University Student Instructor, Thibodeaux School of Music <i>Topic:</i> Kindermusik Teaching in the General Music Classroom
3:35-3:40 p.m.	<b>LAJE Hall of Fame</b> <i>Inductees:</i> J.R. Miller III and Dr. William Grimes
3:40-4:30 p.m.	<b>All-State Jazz Band Concert</b> <i>Conductor:</i> Jack Wilkins, University of South Florida School of Music
4:00-6:00 pm	<b>Conference Registration</b>
4:45-6:00 p.m.	<b>Reading Session – LAJE Jazz Band</b>
<b>Sunday Evening:</b> 6:00-6:50 pm	<b>General Session</b> Consultants: Dr. Kyle Glaser, Texas State University <i>Topic:</i> Pay It Forward: Strategies for Mentoring Student Teachers
6:00-6:50 pm	<b>Band Division Clinic</b> Consultant: Amanda L. Schlegel, University of Southern Mississippi <i>Topic:</i> Armed and ready: Music perception and cognition research to enhance your musical teaching, rehearsing, listening, assessment, and enjoyment
6:30-7:30 pm	<b>Jazz Division/LAJE Business Meeting</b>
7:00-7:45 pm	<b>Guest Performance Bands: McNeese State University Wind Symphony</b> <i>Conductor:</i> Dr. Jay Jacobs
7:00-10:00 pm	<b>Concert Band Rehearsal</b>
7:00-10:00 pm	<b>Symphonic Band Rehearsal</b>
8:00-8:50 pm	<b>Band Division Clinic</b> Consultants: Kevin Rabon and Amanda Stevenson <i>Topic:</i> Creating a Culture of Excellence in Your Band Room
8:00-8:50 pm	<b>Band Division Clinic</b> Consultant: Christopher Drew Dickey, Southwood Academy of the Arts <i>Topic:</i> Art vs. Accuracy: A Balanced Approach to Ensemble Instruction

## MONDAY

### Monday Morning:

8:00 – 11:00 a.m.

8:00-8:50 a.m.

9:00 a.m.-12:00 noon

9:00-9:50 a.m.

9:00-9:50 a.m.

9:00-9:50 a.m.

9:00 a.m.-12:00 noon

9:00 a.m.-12:00 noon

10:00-10:50 a.m.

10:00-10:50 a.m.

10:00-10:50 a.m.

11:00-11:50 a.m.

11:00 -11:50 a.m.

11:00 -11:50 a.m.

### Monday Noon:

12:00 noon-1:30 p.m.

12:00 noon-1:15 p.m.

### Monday Afternoon:

1:15-2:00 p.m.

1:00-2:00 p.m.

1:00-2:00 p.m.

1:30-2:00 p.m.

1:30-2:00 p.m.

2:00-2:05 p.m.

2:05-2:10 p.m.

2:10-2:55 p.m.

3:00-3:50 p.m.

### Conference Registration

### CNAfME Summit Band Rehearsal Demonstration and

### Interactive Band Clinic: *Bring Your Instrument!*

Consultants: Amanda Schlegel, PhD, University of Southern Mississippi

Topic: *When Words Fail: Effective, Efficient, and Engaging*

*Non-verbal Rehearsal Strategies*

### General Exhibits Open to General Membership

### CNAfME Summit General Session

Consultant: Dr. Gordon Towell, Coordinator of Jazz Studies

Loyola University New Orleans

Topic: *Jazz Pedagogy for the School Jazz Ensemble*

### Band Division Clinic

Consultant: Douglas Bakenhus, Northwestern State University

Topic: *Simplifying the Bassoon: It is Not as Difficult as You Think*

### Band Division Clinic

Consultants: Robbie Freeman, West Monroe High School

Topic: *It's "Just" Intonation: Using the Yamaha HD 200 for a Better Band*

Sponsored: Phi Beta Mu

### Concert Band Rehearsal

### Symphonic Band Rehearsal

### CNAfME Summit General Session

Consultant: Ginny Medina-Hamilton, Assistant Principal (former music educator)

Lakewood Elementary School, St. Charles Parish Public Schools

Topic: *My Administrator Doesn't Speak "Music" – Translating Teacher Evaluation Rubrics and*

*Classroom Strategies for the Music Class*

### Band Division Clinic

Consultants: Dr. Kyle Glaser, Texas State University

Topic: *From Start to Finish: Thoughtful Programming for Band*

### Band Division Clinic

Consultant: Brett Babineaux, Broussard Middle School

Topic: *Lessons from Vincent... Who Will Cut Off Their Ear in Your Class?*

### CNAfME Summit General Session

Consultant: Michelle Wilkinson-Nelson

Louisiana Chapter of the American String Teachers Association

Topic: *Improvisation in the Beginning Strings Class*

### Band Division Clinic

Consultants: Adrianna Marshall, Ph.D, Western Illinois University

Topic: *What Non-String Players REALLY Need to Know About Teaching Orchestra*

### Band Division Clinic

Consultant: Erik W. Richards, Delta State University

Topic: *Quality vs. Suitability: Finding the Balance*

### CNAfME Luncheon and Collegiate Summit Wrap-Up at Tio Javi's

### Fresh Mex Bar and Grill

### Phi Beta Mu Luncheon and Meeting

### LBA Business Meeting

### LMBC Business and Information Meeting Meetings

### Non-LMEA Organization Business Meetings

### Concert Band Rehearsal

### Symphonic Band Rehearsal

### Phi Beta Mu Band Director/Contributor of the Year

### Outstanding Young Music Educator Award

Awardees: Carol Sikes, Assistant Director of Bands West Monroe High School

### Outstanding Administrator Award

Awardee: Jarod Martin, Lockport Middle School

### All-State Concert Band Concert

Conductor: Jeff Cannon, Pearl, Mississippi

### All-State Symphonic Band Concert

Conductor: Robert Sheldon, Composer and Educator

# All State Conductors



## Douglas Droste Conductor 2015 Louisiana All-State Orchestra

*Douglas Droste will present a clinic titled "Rehearsal Techniques" on Saturday, November 21, 2015, from 9:00-9:50 a.m.*

*Douglas Droste will conduct the Louisiana All-State Orchestra in concert on Sunday, November 22, 2015, from 1:30-2:20 p.m.*

Conductor **Douglas Droste** is recognized as possessing "obvious joy" for making music and a "sure sense of timing" when on the podium. Those under his baton routinely acknowledge his in-depth musical interpretations, keen

sense of communication, and personable ability to empower musicians. Droste is the Artistic Director of the Muncie Symphony Orchestra and Director of Orchestras at Ball State University.

Droste has led dynamic performances with the MSO and has been praised for his innovative programming. He has conducted performances of Scott Routenberg's **Concerto for Jazz Violin and Orchestra** featuring Christian Howes, Michael Torke's **Ash**, Michael Shapiro and Victor Cheng's **Identity: Zhongshang Zhuang, Concerto for Guzheng and Orchestra** featuring Su Chang, pieces by Tan Dun and Bright Sheng, and recently commissioned Joe Deninzon's **Concerto for Rock Violin and Orchestra**. Droste has also led passionate performances of traditional repertoire such as Beethoven's Symphony No. 9, Debussy's **La Mer**, Bartok's Concerto for Orchestra, Respighi's **Pines of Rome**, and Mozart's Symphony No. 35.

Believing that community engagement is critical for orchestras, Droste has helped establish new concerts such as the Martin Luther King Jr. Memorial Family Concert, a Sensory Friendly concert for children with special needs, and a Toddler Pops concert. He helped initiate the development of the new MSO Family Series including co-creating/producing the popular Young People's Concert, "**Music is Science!**". Droste continues to program accessible pops concerts with artists such as the groundbreaking string trio, **Time for Three**, the Ball State University "**Pride of Mid-America**" Marching Band, and local blues/gospel singer-songwriter, Jennie DeVoe. Droste resides in Muncie and regularly speaks to area civic organizations.

At Ball State, Droste conducts the Ball State Symphony Orchestra (BSSO) and oversees the orchestral conducting program. Recent performances with the BSSO have included Franck's Symphony in D Minor, Saint-Saëns's Symphony No. 3 ("Organ"), and Elgar's **Enigma Variations**. Droste also leads the opera orchestra. He recently conducted Puccini's **La Bohème** and Massenet's **Werther**. Always seeking unique collaborations, the BSSO has combined with the BSU Jazz Ensemble on two occasions: a dual performance of the **Nutcracker Suites** by Piotr Ilyich Tchaikovsky and Duke Ellington; and the first live performance of Oliver Nelson's **The Kennedy Dream** since the original recording release in 1967.

In 2014, Droste and jazz violinist Christian Howes were invited by the U.S. Embassy in Ukraine to perform and teach as part of an ongoing cultural exchange and engagement. Droste guest conducted the INSO-Lviv Symphony Orchestra in a goodwill concert entitled "**Music from the New World**" and gave a conducting master class to young Ukrainian conductors. Other recent guest conducting includes the Columbus Symphony and BalletMet Columbus's production of **The Nutcracker**, the orchestras of Oklahoma City, Tulsa, Midland-Odessa; and the Amarillo Virtuosi Chamber Orchestra on an all-Bach concert, performing as violin/leader on **Brandenburg Concerto No. 1**. Demonstrating his versatility, Droste has conducted pops concerts with artists such as Ben Folds, The Flaming Lips, Pink Martini, Michael Cavanaugh, John Pizzarelli, and Emily Drennan.

A dedicated advocate of music education, Droste regularly conducts youth orchestras and presents in-service conference sessions throughout the country. He is active as a clinician and adjudicator for school orchestras and festivals, and is affiliated with organizations such as Yamaha, Music For All, American String Teachers Association, Festival Disney, and Perform International.

A talented violinist, Droste has performed with the orchestras of Oklahoma City, Tulsa, Nashville, Memphis, Lubbock, and the Lancaster Festival (OH). He is a former student of John Gilbert and the late Michael Davis. Droste is also skilled on viola and trumpet, and has sung with a variety of choral ensembles.

Droste has held positions at Oklahoma State University, Oklahoma City Philharmonic, Oklahoma Youth Symphony, Austin Peay State University, and Liberty Union-Thurston School District (OH). Droste studied conducting at the Pierre Montoux School, the Oregon Bach Festival with Helmuth Rilling, as well as at other prominent conducting seminars. His primary conducting mentors include Gary Lewis, Larry Rachleff, and Michael Jinbo. Droste holds degrees from The Ohio State University and Texas Tech University.



## Jack Wilkins Conductor 2015 Louisiana All-State Jazz Ensemble

*Jack Wilkins will present a clinic titled "Ideas and Methods for Improving your Jazz Band: Improvisation Rhythm Sections and Style" on Saturday, November 21, 2015, from 9:00 to 9:50 a.m.*

*Jack Wilkins will conduct the Louisiana All-State Jazz Ensemble in concert on Sunday, November 22, 2015, from 3:40 to 4:30 p.m.*

Jack Wilkins is Professor of Jazz Studies at the University of South Florida School of Music where he is Director of the Jazz

Studies program, teaches courses in jazz improvisation, jazz styles and analysis, and jazz history, directs jazz ensembles, and teaches applied jazz performance. Under Professor Wilkins leadership, USF Jazz Ensembles have performed at many of the world's most prestigious Jazz Festivals, conducting over 10 concert tours to Europe and South Africa. Formerly Assistant Professor of Jazz Studies and Saxophone at the Oberlin Conservatory of Music, Mr. Wilkins has held faculty positions at Appalachian State University, the University of North Carolina, and as a graduate teaching assistant at Indiana University.

In 2012 Jack Wilkins was appointed to the roster of Fulbright Specialists, and received a grant to serve as consultant and master teacher at the University of Alberta in Edmonton. In 2013 Jack was invited to the Banff Centre for Creative Arts in Alberta, Canada as a Resident Artist to create his "Banff Mountain Project", a series of new musical compositions accompanied by visual

media based on the Banff area.

Jack Wilkins is an active performer, leading his own projects, appearing as guest artist with numerous professional and collegiate jazz bands, and performing as a featured soloist with *Chuck Owen and the Jazz Surge* big band. Jack is Yamaha Instrument Company Artist and an active clinician and adjudicator, having appeared at many high school and college jazz festivals in the USA, Canada, Italy, Russia and South Africa. During the summers Jack teaches and performs as a longtime member of the faculty of the Jamey Aebersold Summer Jazz Workshops. Jack Wilkins publications include the *Essential Jazz Etudes* series by Mel Bay Publishing, and the software based multimedia textbook *Jazz: The Great American Art Form*, by Faulkner Press.

Jack Wilkins has four CD's out as a leader, *ARTWORK* on KochJazz, *Ridgelines* on ClaveBop Records, *Dear Old Stockholm*, on NHV Music and his latest CD, *The Blue and Green Project* on Summit Jazz Records. These CD's have received great reviews, and significant radio play on jazz stations around the world. Jack Wilkins co-leads the Swedish-American group "Two of a Kind" with trumpeter Jan Allan. This group has conducted tours in Sweden and released a CD featuring compositions by Wilkins and reknowned Swedish Composer Georg Reidel, also entitled "Artwork" in 2009.

Jack Wilkins is the featured soloist on the critically acclaimed and Grammy nominated recording "River Runs: A Concerto for Jazz Guitar, Saxophone and Orchestra", from Composer Chuck Owen, released on Summit Jazz Records in 2013. Jack's artistic improvisations and saxophone performance are receiving very positive reviews as the recording is getting international exposure on a wide range of jazz, classical and eclectic online and traditional radio stations. Jack Wilkins can also be heard on the 4 critically acclaimed recordings by Chuck Owen and the Jazz Surge big band, *The Jazz Surge*, *Madcap* and *Here We Are*, all on Seabreeze and the Grammy nominated "Comet's Tail", on Mama Jazz Records. Wilkins compositions and improvisations are also featured on the well-received *Common Ground* CD on Improvibes Records.

# All State Conductors



## Dr. Roland Carter Conductor 2015 Louisiana All-State Mixed Choir

*Dr. Roland Carter will present a reading clinic titled "Rehearsal Techniques" on Friday, November 20, 2015, from 3:00-3:50 p.m.*

*Dr. Roland Carter will conduct the Louisiana All-State Choir in concert on Saturday, November 21, 2015, from 3:10-4:00 p.m.*

Composer, arranger, conductor, pianist, scholar, researcher, teacher... the list of roles performed by UTC Holmberg Professor of American Music, Roland M.

Carter, is never-ending. During his 23-year tenure at The University of Tennessee Chattanooga, Professor Carter conducted choirs, taught classes, accompanied recitals, arranged music, funded concerts, fostered inter-departmental productions, chaired the department, mentored and recruited students, and promoted affirmative action while at all times retaining the demeanor of a true professional.

To the greater Chattanooga community he has served as an advocate for the arts through his work with Allied Arts of Greater Chattanooga, the Chattanooga Symphony and Opera Association, with a very special promotion of the great musical traditions of the African-American heritage, through his work with The Chattanooga African American Museum, (Bessie Smith Cultural Center) and the Chattanooga Choral Society for the Preservation of African American Song.

Roland Carter served as the Ruth S. Holmberg UTC Foundation Professor of Music at the University of Tennessee at Chattanooga. Carter served as Head of the Cadet Department of Music and Conservatory for six years (1989-1995). Prior to returning to his hometown to accept this assignment, he served as Chair of the Department of Music at Hampton (Institute) University and director of its internationally acclaimed choirs for nearly a quarter century.

Carter's list of presentations during the past forty-eight years is impressive. It includes concerts in the nation's most prestigious venues and with major orchestras; lectures, workshops, master classes, and festivals for schools, churches, colleges, and universities, and national associations throughout the country. His compositions and arrangements are performed by music organizations throughout the world. Carter has produced, appeared on, and served as consultant for national and international radio and television programs. He is in constant demand as guest conductor and lecturer and maintains a very active schedule of workshops and performances.

Carter's attainments are well documented. Critics throughout the world have hailed his excellence in the choral arts, and he has received numerous awards and honors for his outstanding achievements in choral music. For his notable contributions to the performance and preservation of African American music, Carter's biography and list of compositions are included in *Our Musical Heritage*, a catalog published jointly by Carl Fischer Music and the National Association of Negro Musicians; his bio also appears in *International Dictionary of Black Composers* and the soon to be released updated edition of *The New Grove Dictionary of American Music*. He has received national awards from, and has been recognized by the National Association of Negro Musicians, the National Black Music Caucus, Phi Mu Alpha Sinfonia, and Sigma Iota Theta Music Fraternities. He was selected to conduct the inaugural concert of the African American Music Series at Carnegie Hall. He has received the Tennessee Governors Arts Award and his contributions have been recognized by universities throughout the country including an honorary doctorate from Shaw University in Raleigh, NC. Carter shares with Robert Shaw and Leonard DePaur the honor of being one of three musicians to receive honorary membership in the MOREHOUSE COLLEGE GLEE CLUB throughout its history.

In addition to teaching performing, Carter has an outstanding record in arts advocacy and service. A life member of the National Association of Negro Musicians, Carter has served on its Board of Directors, Chair of the Committee on Choral Standards, and national President. He is a life member of the American Choral Directors Association. He has held membership in Music Educators National Conference, the Music Teachers National Association, Phi Mu Alpha Sinfonia, Kappa Alpha Psi Fraternity. Most recently, he was inducted as a national arts advocate and honorary member of Sigma Iota Theta. Carter has served as a member and co-chair of the NEA Music Advisory Panels for Choruses. He has held seats on several national, regional, and local including the Chattanooga African American Museum, the Chattanooga Symphony and Opera Association, Allied Arts of Chattanooga (ArtsBuild), Tennessee Arts Commission, National Association of Arts Agencies, Southern Arts Exchange, the League of American Symphony Orchestras and SPHINX. Carter was Music Director of the Chattanooga Choral Society for the Preservation of African American Song (CCSPAAS) for 22 years. He has served the music ministries of First Baptist Church (East Eighth Street, Chattanooga), Christian Faith Baptist Church, Raleigh, NC, First Christian Church, Hopkinsville, KY, and was music director for the Hampton University Ministers Conference. For his monumental contributions to church music an annual national award is presented in his honor – The Roland M. Carter Lifetime Achievement Award. This year, the award was presented to internationally acclaimed gospel music recording artist, composer and producer - Jeffrey LaValley. For nearly ten years, Carter has directed the Chancel Choir of the Cascade United Methodist Church, Atlanta.

He is founder and CEO of MAR-VEL, a publisher specializing in music by African American composers and traditions.



## Angie Rawls Conductor 2015 Louisiana All-State Women's Chorale

*Angie Rawls will conduct the Louisiana All-State Women's Chorale in concert on Friday, November 20, 2015, from 4:00-5:00 p.m.*

Angie Rawls has been a choral director in the Pearl Public School district in Pearls, Mississippi for 23 years. She is the Director of Choral Activities at Pearl High School where she directs Pearl Singers, Pearl Chamber Singers, Pearl Men's Glee, and various ensembles. She serves

as accompanist for several choral groups, as well as directing the pit orchestra for the annual Pearl High School musical production.

Angie has had the privilege of serving as a clinician for mass choirs in the great state of Mississippi, and also as an adjudicator in the southeastern United States. She holds the Bachelor of Music degree from Millsaps College in Jackson, Mississippi, and the Master of Music Education degree from Mississippi College in Clinton, Mississippi. She is also a National Board Certified Teacher.

Angie's most recent musical endeavor is serving as pianist for First Baptist Church Clinton, Mississippi.

Angie is an active member Mississippi Music Educators Association and is in the second year of her term as President. She is also a member of the American Choral Directors Association where she currently serves as Mississippi ACDA Treasurer.

Angie is married to Peyton Rawls who is also very musical and they have two equally musical children, Jaron and Melody.





# All State Conductors



## Robert Sheldon Conductor 2015 Louisiana All-State Symphonic Band

*Robert Sheldon will present a clinic titled "TO MUSIC AND BEYOND!" on Sunday, November 22, 2015, from 1:00-1:50 p.m.*

*Robert Sheldon will conduct the Louisiana All-State Symphonic Band in concert on Monday, November 23, 2015, from 3:00-3:50 p.m.*

**Robert Sheldon** (b. Feb 3, 1954) has taught instrumental music in the Florida and Illinois public schools, and has served on the faculty at Florida State University

where he taught conducting and instrumental music education classes, and directed the university bands. As Concert Band Editor for Alfred Music Publishing, he maintains an active composition and conducting schedule, and regularly accepts commissions for new works. Sheldon received the Bachelor of Music in Music Education from the University of Miami and the Master of Fine Arts in Instrumental Conducting from the University of Florida.

An internationally recognized clinician, Sheldon has conducted numerous Regional and All-State Honor Bands throughout the United States and abroad. His teaching career included 28 years in the Florida and Illinois public schools as well as at the University of Florida, Florida State University, Illinois Central College and Bradley University. He also held positions as conductor of the Alachua County Youth Orchestra in Gainesville, Florida and the Prairie Wind Ensemble in East Peoria, Illinois. He maintains membership in several organizations that promote music and music education. He is lead author for the SOUND INNOVATIONS FOR BAND method books, and is a co-author for the MEASURES OF SUCCESS Volume 1 method book and the SOUND INNOVATIONS FOR STRINGS method books.

The American School Band Directors Association has honored him with the Volkwein Award for composition and the Stanbury Award for teaching, and the International Assembly of Phi Beta Mu honored him with the International Outstanding Bandmaster Award. He has also been a twenty-eight-time recipient of the American Society of Composers, Authors and Publisher's Standard Award for his compositions in the concert band and orchestral repertoire. His compositions have been recorded and released on compact discs including, *Images: The Music of Robert Sheldon*, and *Infinite Horizons: The Music of Robert Sheldon*, as well as numerous other recordings. Mr. Sheldon has been the topic of articles published in *The Instrumentalist*, *Teaching Music and School Band and Orchestra Magazine*, and is one of eleven American wind band composers featured in Volume I of *Composers on Composing Music for Band*.



## Jeff Cannon Conductor 2015 Louisiana All-State Concert Band

*Jeff Cannon will present a clinic titled "My Band is Going to Japan Next Year, is Yours?" on Sunday, November 22, 2015, from 11:00 a.m.-12:00 noon.*

*Jeff Cannon will conduct the Louisiana All-State Concert Band in concert on Monday, November 23, 2015, from 2:10-2:55 p.m.*

William "Jeff" Cannon, Sr. received a Bachelor of Music Education from Delta State University in 1980, where he served as drum major of the DSU band for four

years. In 1995 Jeff received the Master of Music Degree from Mississippi College. Jeff is a 1974 graduate of Pearl High School where he played trumpet, was drum major of the Pearl Pirate Band and was a member of the 1974 Mississippi Lions All-State Band.

After receiving his bachelor's degree, Jeff served first as assistant director, then director of bands for Madison-Central band program in Madison, MS for eight years. In the summer of 1988, Jeff became associate director of bands for Pearl Public Schools, and was appointed Director of Bands for the Pearl Public Schools in 2007. The Pearl "Pirate" marching band has rated all-superior for 46 consecutive years at the Mississippi State Marching Festival. Among its many accomplishments, the Pearl band was selected to represent Mississippi at President George W. Bush's Inauguration in January 2001. They were also selected to perform in the 1999 Macy's Thanksgiving Day Parade in New York City and were the featured band on NBC's *Today Show* while in New York. The Pirate marching band has achieved numerous awards both locally and nationally, including a first place performance at the National Cherry Blossom Festival in Washington D.C., and Grand

Champion Marching Band for the State of Mississippi in 1997. Under his direction, the Pirate Band won the Class 4A State Marching Championships in 2007, and were the Class 5A marching champions in 2009, 2011 and 2012. The Pearl Band Program also received the American School Band Director's Association "Award of Excellence" for its outstanding instrumental music program. Pearl's symphonic, concert and varsity band programs have consistently rated superior during the past twenty years as well. The Pearl Symphonic Band performed at the Southern Conductors' Conference in February 2008 at The University of Southern Mississippi and has achieved "Sweepstakes" status all six years that the award has been presented.

Jeff served as President of the Mississippi Band Master's Association in 2003. Under his leadership the MHSAA/MBA State Marching Championships were initiated and now over 5000 students participate each year. In addition, the MBA All-State Band was established and nearly 1000 students audition each year for this prestigious ensemble. Jeff was named Delta State University Alumnus of the year in 2003, and the National Federation of High Schools Outstanding Music Educator in 2003.

Jeff has served on the staff of the Mississippi Lions All-State Band twenty-one times in such capacities as staff assistant, marching director, concert director, assistant manager, and was appointed Director/Manager in July of 2006. The Mississippi Lions Band travels worldwide to participate in Lions International Parade competitions and has won 31 international championships since 1951.

In the summer of 2015 Jeff received an appointment to become Interim Director of Bands for Jones County Jr. College in Ellisville, MS. The famous Maroon Typhoon Band marches for athletic events, parades and this year will be featured in the McDonalds Parade of Lights in Chicago, IL.

Jeff retired from Pearl High School in July 2013 and has served as Director of Music at First Baptist Church of Terry, MS, for over 16 years. Jeff continues to serve as Director/Manager of the Mississippi Lions All-State Band and is currently serving in his 9<sup>th</sup> year as Director/Manager. He and his wife, Dian, have five children ages 41, 40, 39, 35, and 26. They have six grandchildren Abby, Simon, Austin, Alaina, Seraphina, and Owen.



# Consultants



## Chris Murphy

**Consultant**

**Elementary Clinic and General Session**

*Chris Murphy will present an Elementary Division Clinic on Thursday, November 19, 2015, from 3:00-3:50 p.m. titled "Teaching Can Be Fun Again With Quaver!" Chris Murphy will present a General Session on Thursday, Friday, November 20, 2015, from 6:30-7:20 p.m. titled "Do Mobile Devices and Music Class Go Together?"*

Quaver Team member Chris Murphy lives and breathes music. Impacted by this art form he has performed on stage and screen as a singer/songwriter and actor for over 20 years. With a degree in Theatre from Los Angeles' EL Camino College he continued his studies in improvisation with the Groundling and other comedic troops in LA and Nashville. Join Chris as he shares his love for music and this exciting general music program.



## Charlotte Mizener

**Consultant**

**Elementary Division Clinic**

*Charlotte Mizener will present an Elementary Division Clinic: Thursday, November 19, 2015, from 4:00-5:00 p.m. titled "Getting to the CORE of Mathematics through Music."*

Charlotte Mizener is a professor of music education at Lamar University in Beaumont, Texas, where she teaches undergraduate and graduate music education courses and applied harp. She also serves as the coordinator of music education and the graduate adviser. She previously taught elementary music in grades kindergarten through six. She received the Bachelor of Music Education degree and Master of Music in harp performance degree from the University of North Texas

and the PhD in music education from the University of Texas at Austin.

Dr. Mizener's research interests include the elementary school-aged singer and children's attitudes toward music and singing as well as music educator preparation. She has presented research in the above areas at music education conferences at the state, regional and national levels. Her work has been published in the *Journal of Research in Music Education*, *General Music Today*, *Texas Music Education Research*, and the Texas Music Educators Conference *Connection*. She is the chair of the research division of the Texas Music Educators Conference.



## Michael Ruybalid

**Consultant**

**Elementary Division Clinic**

*Michael Ruybalid will present an Elementary Division Clinic: Thursday, November 19, 2015, from 5:00-6:00 p.m. titled "Early Childhood Music through Multiple Lenses."*

Michael Ruybalid is currently on the faculty of Southeastern Louisiana University in Hammond, LA, where he teaches undergraduate courses in elementary and early childhood music education. He is also a doctoral candidate in music education at the University of Oklahoma (OU). As a graduate teaching assistant at OU, he taught courses in early childhood and elementary music methods to education majors, which included supervising practicum teaching with these students at

the OU Institute of Child Development and within Norman's Head Start program. He has presented for such organizations as the Louisiana Education Research Association (LERA), the Oklahoma Music Educators Association (OMEA), and Orff-Schulwerk chapters in Louisiana and Oklahoma. Mr. Ruybalid received his Kodály certification along with his master's degree in music education from Holy Names University. In addition, he has completed three levels of Orff-Schulwerk certification from the University of Northern Colorado (Level 1) and George Mason University (Levels 2 and 3), as well as Elementary Level 1 certification in Music Learning Theory from Michigan State University. Prior to beginning his doctoral studies, Mr. Ruybalid taught PreK-12<sup>th</sup> grade music for eight years in both private and public schools in the San Francisco Bay Area.



## Dr. Sandy Mathias

**Consultant**

**Elementary Division Clinic**

*Dr. Sandy Mathias will present four clinics for the Elementary Division: Thursday, November 19, 2015, from 7:30-8:20 p.m. titled "Developing Part Singing in Grades K-6." Friday, November 20, 2015 from 9:00-9:50 a.m. titled "Teacher Preparation for Teaching a Choral Piece to Insure Student Success." Friday November 20, 2015 from 6:30-7:20 p.m. titled "Empowering Students to Become Independent Readers." Saturday, November 21, 2015, from 8:00-8:50 a.m. titled "Choral Curriculum Planning for a Program, a Year and Each Concert." Dr. Mathias is sponsored by the Louisiana Association of Kodaly Educators.*

Dr. Sandra Mathias is a graduate of SUNY - Fredonia (BS in Mus. Ed.); Ball State University (MA with Orff Concentration), The Ohio State University (Ph.D. in Mus. Ed.), and The Kodály Center of America (Kodály Certificate). Dr. Mathias is Professor Emerita of Capital University, where she served as Professor of Vocal Music Education for 29 years. She is also Director Emerita of the Columbus Children's Choir, where she served as Founder/Artistic Director for 25 years. Under her direction, the New World Singers of the Columbus Children's Choir performed at the 2007 national conferences of ACDA, OAKE, AOSA, and MENC; the National Repertory Orchestra in Breckenridge, CO; the Chautauqua Symphony at the Chautauqua Institution; and the Columbus Symphony Orchestra (CSO). In 2005, 2008, and 2011, the choir shared their voices with audiences in Europe. In 2010, they received first place in Youth Division of The American Prize. In December 2011, they performed at the White House.

Dr. Mathias is the recipient of the Kodály Institute Intezetért Award, the CSO Community Music Educator of the Year, the Southside Settlement Arts Freedom Award, and Outstanding Educator Award from OAKE. She has presented papers at conferences in the United States, Hungary, Australia, England, Hungary, and China. During her career, she has presented sessions at AOSA, OMEA, and OAKE. She is a Past President of the **Organization of American Kodály Educators** (OAKE). She has served as the R & S Chair for Children's Choirs for OCDA and Central Division of ACDA. In the Spring of 2009, Dr. Mathias was the guest conductor for the Georgia All-State Middle School Treble Chorus and the OAKE National Children's Choir. In February 2012, she conducted the 5<sup>th</sup> Grade Honor Chorus for the Lake Charles, LA Honor Chorus Festival. In August 2012, she was the guest conductor for the NY American Choral Directors' Association Children's Honor Choir. She has also served as consultant for the Fort Wayne Children's Choir. Currently, she is Vice President of the International Kodály Society.

# Consultants



## Bryan Burton

**Consultant  
Elementary Division Clinics**

*Bryan Burton will present two clinic: Friday, November 20, 2015, from 8:00-8:50 a.m. titled "Musical Games from Around the World." Friday, November 20, 2015 from 1:00-1:50 p.m. titled "Discovering a World of Music in Your Community's Backyard."*

J. Bryan Burton, Professor and Chair of Music Education at West Chester University, holds degrees from West Texas A & M University, Western State Colorado University, and the University of Southern Mississippi. Dr. Burton is author, co-author, or contributing author to 40+ texts, 60+ articles, and has presented 300+ papers and workshops on six continents. He is contributing author for the *Grove Dictionary of American Music, 2<sup>nd</sup> Edition*, and serves on editorial and advisory boards for *Music Educators Journal* and *International Journal of Music Education*.

Ann L. McFarland recently retired as Associate Professor of Music Education and Coordinator of Field Experiences and Student Teaching at West Chester University. She has written numerous articles and presented workshops and papers at music conferences on five continents. Dr. McFarland resides in Key West, Florida, where she teaches music for early childhood and private piano lessons.



## Dr. John Feierabend

**Consultant  
Elementary Division Clinic**

*Dr. John Feierabend will present three double-clinics for the Elementary Division: Friday, November 20, 2015, from 10:00 a.m.-12:00 noon titled "First Steps in Music – Vocal Development for Pre-K – 3<sup>rd</sup> Grade and First Steps in Music – Movement Development for Pre-K – 3<sup>rd</sup> Grade." Friday, November 20, 2015, from 2:00-4:00 p.m. titled "Tuneful, Beatful, and Artful Movement for Upper Elementary and Tuneful, Beatful, and Artful Singing for Upper Elementary"; and Saturday, November 21, 2015, from 9:00-11:00 a.m. titled "Conversational Solfege – Level 1 for All Levels: Elementary Middle and High School and Conversational Solfege – Level*

*2 for All Levels: Elementary, Middle and High Schools".*

Dr. John Feierabend is considered one of the leading authorities on music and movement development in childhood. He is a Professor of Music Education at The Hartt School of the University of Hartford and is a past President of the Organization of American Kodály Educators. He has given presentations in all 50 states and many other countries. He is the author of over 80 books, recordings, and DVDs, several of which served as the inspiration for the award winning PBS children's television series "Lomax: The Hound of Music."

Dr. Feierabend has been honored as a Lowell Mason Fellow by the National Association for Music Education (NAfME); named University Educator of the Year by the Connecticut Music Educators Association; received the outstanding alumni award from Wayne State University; received the Outstanding Educator Award from the Organization of American Kodály Educators, the James Bent Award for outstanding achievement in scholarship and creativity from the University of Hartford, and was the first U.S. recipient of the LEGO Prize, an international award given annually to "an individual who has made a distinctive contribution to the betterment of children."

Dr. Feierabend continues to be committed to collecting, preserving and teaching the diverse folk music of our country and using that folk music as a bridge to help children understand and enjoy classical music. Dr. Feierabend's creativity and research has resulted in two music methods: *First Steps in Music*, a music and movement program for infants through elementary-aged children and *Conversational Solfege*, a music literacy method suitable for elementary through college-aged student. Dr. Feierabend's teaching has provided thousands of teachers and their students with the materials and techniques to help build community through music by evoking enthusiastic participation of all people. To that end his approach strives for all people to become tuneful, beatful and artful through research based and developmentally appropriate pedagogies while promoting the use of quality literature. In the summer of 2012 a group of dedicated and like-minded educators honored Dr. Feierabend's 40 plus years of teaching and research with the formation of the Feierabend Association for Music Education. For more information go to: [www.feierabendmusic.org](http://www.feierabendmusic.org) and [www.giamusic.com/feierabend](http://www.giamusic.com/feierabend).



## Judith A. Sullivan

**Consultant  
Elementary Division Clinic**

*Judith A. Sullivan will present clinic: Friday, November 20, 2015, from 7:30-8:20 p.m. titled "Music Class Begins at the Door! Striving to Make Every Minute Musical."*

**Dr. Judith Sullivan** is Associate Professor and Coordinator of Music Education at Tennessee Technological University. Her teaching includes: Introduction to Music Education; Music Methods & Materials K-5; and Professional Seminar I, which covers teaching music to students who have special needs. She is an edTPA Clinician and official scorer for the edTPA through Pearson Publications. In addition to these duties, she teaches a music course for the elementary education majors. Her education includes a Bachelor of Music Education from Michigan State University, and Master of Music Education and Doctor of Philosophy degrees from the University of Kentucky. Dr. Sullivan's teaching and research interests are in general music, early childhood music and movement, cross-curricular teaching, social justice issues in education, and STE(A)M education.



# Consultants



## Cameron Weatherford

**Consultant**  
**Vocal Division Clinic**

*Cameron Weatherford will present a Vocal Division Clinic: Friday, November 20, 2015, from 9:00-9:50 a.m. titled "It Gets Better! A Session for New Teachers."*

Cameron Weatherford has been serving as the Choral Director at Alexandria Senior High since 2012. Under his direction, the ensembles of Alexandria Senior High School have received numerous recognitions and awards including Superior ratings and the District and State level and have been featured in two Louisiana ACDA performances. From 2012 to 2015 he served as an Adjunct Professor at Louisiana College where he conducted the Louisiana College Chorale, The GraceNotes, and taught Choral Literature. He has conducted honor choirs in Districts I, II, III, V and VII in Louisiana. He has served as an adjudicator in both Louisiana and Mississippi. Mr. Weatherford has been featured as a session presenter in Louisiana, Mississippi, and Ohio conferences including LMEA, MMEA, ACDA, and the Kettering National A Cappella Conference. His arrangements have been performed in Louisiana, Texas, Mississippi, and New Jersey and in 2012, he was published under the Kansas City Music Publishing Co.

He currently serves as the Co-Chair for the Women's Division of Louisiana ACDA, the Co-Chair for the Women's Honor Choir in District II, The Louisiana State Representative for AEA (A Cappella Educators Association) and is an active member of NAFME, ACDA, AEA and CASA (Contemporary A Cappella Society of America).

Mr. Weatherford holds a B.M. in Church Music from Louisiana College and a M.M. in Choral Conducting from The University of Southern Mississippi.



## Monte Garrett

**Consultant**  
**Vocal Division Clinic**

*Monte Garrett will present a Vocal Division Clinic: Friday, November 20, 2015, from 11:00-11:50 a.m. titled "Programming for a Thematic Choral Concert."*

Dr. Monte Garrett is Professor of Music and Director of Choral Activities at Howard Payne University, Brownwood, TX, where he joined the faculty in 2001. In addition to conducting Concert Choir and Heritage Singers, he also teaches elementary and choral conducting, choral literature, and choral methods. He has also taught courses in church music and music history. He earned both the Bachelor and Master's degrees in Music from Hardin-Simmons University in Abilene, TX, and the Doctor of Musical Arts in choral conducting at the University of Texas at Austin. His conducting teachers include Dr. Loyd Hawthorne, Dr. David Keith, and Dr. James Morrow. He has participated in conducting master classes with Dr. Ken Fulton (Louisiana State University), Dr. Joshua Habermann (Dallas Symphony Chorus) and Jon Washburn (Vancouver Chamber Choir).

During his tenure at Howard Payne, the choirs have commissioned and premiered choral works by Kurt Kaiser, Kinley Lange, Libby Larsen, Mary McDonald, Robert Sterling, Robert Tucker, David Ashley White, and Robert Young. He has served as a clinician for several high school choirs and served as the clinician/conductor for the TMEA Region 7 All-Region Choir in 2003. In the summer of 2005, he conducted the Texas Baptist All-State Youth Choir – the first "alumni" of the choir to do so. He also conducted the TBAS choir in the summer of 2009. In 2007, the HPU Concert Choir recorded "When I Survey," a CD of hymn settings and arrangements. His article "The 'Forgotten' Music of Salzburg: The Organ Sonatas of Wolfgang Amadeus Mozart and the Choral Graduals of Johann Michael Haydn" was published in the February 2008 issue of The American Organist.



## Dr. Mark Malone

**Consultant**  
**Vocal Division Clinic**

*Dr. Mark Malone will present two Vocal Division clinics: Friday, November 20, 2015 from 10:00-10:50 a.m. titled "Sight-Reading 101." Friday, November 20, 2015 from 2:00-2:50 p.m. titled "Teaching Improvisation and Creativity in conjunction with the New National Standards of Music Education."*

Dr. Mark Hugh Malone is in his tenth year as Coordinator of Music Education and Professor of Music in The Winters School of Music at William Carey University in Hattiesburg, MS. Malone is a native of Miami, FL and holds the B.S. in Social Studies Education from The Florida State University, the B.A. in Humanities from Rollins College, as well as the Master of Music Education and the Ph.D. in Music Education from The Florida State University.

From 2006-2010, Dr. Malone conducted, The Chorale, the premiere performing organization in The Winters School of Music. The Chorale sang with The Mississippi Symphony, performed for the Mississippi Baptist Convention, made three concert tours throughout the southeast, and received an invitation to sing for the 2008 Governor's Awards for Excellence in the Arts during Dr. Malone's short tenure as conductor.

For 21 years, Dr. Malone served as Director of Choral Music at Pearl River Community College (PRCC), Poplarville, MS, where he conducted *The Pearl River Singers* (Concert Choir), *RiverRoad* (showchoir), and *The Voices* (select vocal ensemble), taught Voice, Music Literature, Music Appreciation, Music For Elementary Education Majors, and served as Music Director for the spring musicals. Under the direction of Dr. Malone, choirs from PRCC made three concert tours of England, Wales, Scotland, and France; have sung for state and regional conventions of the American Choral Directors Association (ACDA); and have made concert appearances in New York City, Washington, D.C., Norfolk, VA, Atlanta, Nashville, New Orleans, Los Angeles, Seattle, aboard Carnival Cruise Lines, at Walt Disney World and Six Flags over Georgia. Prior teaching experience includes work at W. I. Thames Elementary School in Hattiesburg, MS, and Osceola High School in Kissimmee, FL.

Dr. Malone served as National Repertoire and Standards Chair for Two-Year College Choirs from 2000-2006 with the American Choral Directors Association. Articles by Dr. Malone have been published in the official magazine of ACDA, *The Choral Journal*, from 1990-2006. In addition, he was piano accompanist for the Mississippi ACDA All-State High School Honor Showchoir from its inception until 2005. In demand as a concert choir and showchoir adjudicator, Dr. Malone has judged choral ensembles in Alabama, Arkansas, Florida, Georgia, Louisiana, and Mississippi and has served as choral clinician in Alabama, Florida, Georgia, Louisiana, and Mississippi.



# Consultants



## Dr. Melissa Brunkan and Dr. Trey Davis

**Consultant**  
**Vocal Division Clinic**

*Dr. Melissa Brunkan and Dr. Trey Davis will co-present a clinic on Saturday, November 21, 2015, from 10:00-10:50 a.m. The session is titled "Choral Strategies: Fostering Efficient Vocal Technique and Musicianship through Warm-Ups."*

**Melissa C. Brunkan**, Assistant Professor of Music Education at Louisiana State University in Baton Rouge, LA holds degrees from the University of Minnesota (B.M., music education, choral conducting), Northwestern University (M.Mus., vocal performance/pedagogy), and The University of Kansas (Ph.D., music education).

Prior to her work at Louisiana State University, she taught in public and private schools in the Minneapolis/St. Paul, Milwaukee, and Chicago areas for twelve years, teaching students from pre-K through adult with an emphasis on secondary choral/vocal music. Other experience has included private voice teaching as well as conducting, musical theater directing, post-surgical vocal pedagogy consultation, and workshop facilitation.

Dr. Brunkan has sung and conducted professionally with choirs, opera and theater companies and churches throughout the United States, including the Minnesota Chorale, the Florentine Opera, Stages Theater Company, and the Twin Cities Womens' Chorus. Vocal performance has taken her to places such as Denver, CO, New York, NY and Chicago, IL. Recently, she founded a community choir for adults with intellectual disabilities. Her choirs have sung with artists and conductors from places such as China, Venezuela, and Indonesia, performing in various venues from the Minnesota State Capitol to the Kennedy Center.

Her primary research interests include the use of gesture in choral/vocal pedagogy, lifespan voice pedagogy, singers with medical conditions affecting the voice, conductor gesture and behaviors, and the adolescent voice. Her research has been presented at regional, national, and international venues in such places as Philadelphia, Tucson, Newfoundland, and Greece. Brunkan has published articles in various journals including Journal of Research in Music Education, International Journal of Research in Choral Singing, and The International Journal of Music Education: Research. She has held leadership roles in professional organizations such as the American Choral Directors' Association, serves on the Board of Directors for the VoiceCare Network, and has served as editorial assistant for IJME: Research.



**Trey Davis** is the Associate Director of Choral Studies at Louisiana State University in Baton Rouge, Louisiana. He formerly served as Associate Director of Choral Activities at University of Wisconsin-Platteville and as Associate Conductor to the Dubuque Chorale. Active as a guest artist and vocalist, Dr. Davis frequently conducts All-Region and festival honor choirs throughout the Midwest and Southeast. Recent research includes the choral works of David Lang, for which he is the recipient of the Julius Herford Dissertation Prize for outstanding research in choral music. His writing has been described as "exceptional for its level of details, insight, contextual grasp and elegance." He has presented interest sessions for regional and national conferences of the American Choral Directors Association, for the Louisiana Music Educators Association, and for international conferences of the College Music Society, most recently in Stockholm, Sweden and Helsinki, Finland. He holds degrees in choral conducting from Texas Tech University (D.M.A.) and Westminster Choir College of Rider University (M.M.) and the degree of Bachelor of Arts in music education from Pepperdine University.



## Mark Wood

**Consultant**  
**Orchestra Division Clinic**

*Mark Wood of Electrify Your Strings Inc. will present a clinic titled "Plug Your Ears In! Extreme Orchestra Makeover" on Saturday, November 21, 2015, from 11:00-11:50 a.m.*

Recording artist, performer, producer, inventor, Emmy-winning composer and music education advocate Mark Wood has spent the past four decades electrifying the orchestra industry – literally.

His program "Electrify Your Strings (EYS) – now in its 16<sup>th</sup> year – is an intensive rock and roll workshop for school music education departments that boosts student self-esteem and motivation and helps raise money for music education. Today, EYS visits upwards of 60 schools per year. The organization has been featured on the Today Show and the CBS Evening News. PBS has dubbed Mark as the "Les Paul of the Violin World." The Juilliard-trained violinist is a world-renowned performer who rose to fame as string master and founding member of the internationally acclaimed Trans-Siberian Orchestra. He has also released six solo albums performed at Carnegie Hall, the Lincoln Center and Madison Square Garden.



## Brian Shaw

**Consultant**  
**Jazz Division Clinic**

*Brian Shaw will present a clinic titled "Keeping All the Plates Spinning: Strategies for Trumpet Versatility" on Saturday, November 21, 2015, from 7:00-7:50 p.m. This session is sponsored by: The Louisiana Association of Jazz Educators.*

Brian Shaw is the Carruth Associate Professor of Trumpet and Jazz Studies at LSU. He is also Principal Trumpet of the Baton Rouge Symphony, Co-Principal Trumpet of the Dallas Wind Symphony, and enjoys an international performing career on modern and Baroque trumpets. This season, Shaw will perform as a soloist in Miami, Santa Fe, Rochester NY, and will make his debut on keyed trumpet in Austin, TX, playing Haydn's *Concerto for Trumpet in E-flat*. Over the past year, he toured Europe with the Boston Early Music Festival Orchestra, was the only American Baroque trumpet soloist featured in the final concert of the 2014 International Trumpet Guild Conference, and performed as a soloist with the Hong Kong Wind Philharmonia. His solo recordings include *redshift*, (accompanied by the Dallas Wind Symphony), and his 2008 Baroque CD, *Virtuoso Concertos for Clarino*. As a jazz trumpet player, Brian plays regularly with the LSU *Hot Summer Nights* trio with pianist Willis Delony and bassist Bill Grimes. He also leads a big band every December for the popular "Cool Winter Nights and Hot Jazz" holiday concerts at the Manship Theatre. Brian is currently working as co-author on a biography of legendary jazz trumpeter and composer Kenny Wheeler, titled *Song for Someone*, which will be published by Equinox Books, London, in 2017. He lives in Baton Rouge with his wife, Paula, their toddler, Thomas, six rescued dogs, and a cat.

# Consultants



**Jan Scott**  
Consultant  
Band Division Clinic

Jan Scott will present a clinic titled "Clarinet Problems Solved" on Saturday, November 21, 2015, from 7:00-7:50 p.m.

Jan Fillmore Scott has performed as a recitalist, clinician, and soloist throughout the United States. She is currently principal clarinet with the Lake Charles Symphony and the Rapides Symphony Orchestra in Alexandria, Louisiana, and has performed with the Louisville Orchestra, Louisville Ballet, Indiana Chamber Orchestra, Fort Wayne Philharmonic, Midland-Odessa Symphony, Acadiana Symphony and the Symphony of Southeast Texas. She is a Yamaha Performing Artist, a Grammy voting member of the Academy of Recording Arts and Sciences, and a past adjudicator for the ICA's Young Artist Competition. Mrs. Scott has recorded with Innova and Centaur Labels, and her performances have been heard on NPR allowing the audience to hear the clarinet in a new exciting medium.

Jan is a founding member of PASTICHE CHAMBER ENSEMBLE, acclaimed internationally for its talent and polish. This whimsical quartet is actively involved in expanding the repertoire with new commissions. Jan holds degrees from the University of North Texas and the University of Louisville. Her teachers and mentors include Lee Gibson, James Gillespie, John Scott and Steve Cohen. She has been on the teaching faculties of McMurry University, Abilene Christian University, University of Louisville, and the Indiana University-Purdue University at Fort Wayne.

Since 1990, Scott has been a professor of clarinet/double reeds, woodwind techniques, and music education at McNeese State University. She currently serves as Assistant Department Chair in the Department of Performing Arts and in 2011 was named a Pinnacle Award Winner for her work on "Integrating Service Learning into the Beginning Woodwind Class." When not making music, Jan enjoys hiking, riding her horse Razz, spending time with her husband Dave and visiting their daughter Robin in Colorado.



**Joseph Nassar**  
Consultant  
Band Division Clinic

Joseph Nassar will present a Band Division Clinic on Sunday, November 22, 2015. The Band Division Clinic from 8:00 a.m. to 8:50 a.m. is titled "How (NOT) to Make a V at Festival."

Joseph Nassar received his Master of Music (MM) and Bachelor of Music Education (BME) in from Louisiana State University, and has completed post-graduate work in Educational Leadership. He holds National Board Certification in Early Adolescence/Young Adulthood Instrumental Music, and is a certified Teacher Leader.

Mr. Nassar has served as Band Director at Donaldsonville High School, Prairieville Middle School, and since 1999, Assistant Band Director at St. Amant High School in St. Amant, Louisiana. At St. Amant, Mr. Nassar conducts the Marching Band, Concert Band, Symphonic Band, and Jazz Band, and is the Color Guard faculty sponsor. All bands under his direction have earned numerous sweepstakes awards at LMEA state events, and the Concert Band and Symphonic Bands have been ranked first place many times in their respective divisions in LMEA competition.

Mr. Nassar has served as a concert band and marching band clinician and adjudicator throughout Louisiana, and is a member of the National Association for Music Education, the Louisiana Music Educators Association, Phi Beta Mu, and the District IV Band Directors Association.

Additionally, Mr. Nassar has received many awards and accolades for teaching including:

Selection by School Band and Orchestra Magazine to represent Louisiana in the December 2008 feature entitled "50 Directors Who Make a Difference," Performer at the 25th Annual International Horn Symposium, Tallahassee, Florida President of the LMEA District IV Band Directors Association 2007-2015. Three-time recipient of the Ascension Fund Grant for Teaching Excellence. Winner of EATEL's "Reach a Kid, Teach a Kid" Grant Induction into Phi Beta Mu, the National Bandmasters Fraternity.

Joseph and Misty Nassar reside in Prairieville, Louisiana with their children, Kaitlyn, Blake, Jordan, and Chole.



**Andrew Hunter**  
Consultant  
Band Division Clinic

Andrew Hunter will present a clinic titled "Big Things from Small Groups: Defining Expectations in Rehearsal and Performance" on Sunday, November 22, 2015, from 8:00 – 8:50 a.m.

A native of Baton Rouge, Louisiana, Andrew Hunter is on faculty in the School of Music at the University of Southern Mississippi, where he is concurrently pursuing a Doctor of Musical Arts degree in Conducting. At Southern Miss, he conducts the Symphonic Winds and University Band, assists with The Pride of Mississippi Marching Band, teaches undergraduate conducting, and supervises student teachers. He is formerly Director of Bands and Assistant Professor of Music at Louisiana College in Pineville, Louisiana. In 2012, Andrew was named Louisiana College Professor of the Year. While in Pineville, he served as Music Director and Conductor of the Red River Wind Symphony, a community wind band. Additionally, he has served on the Board of Directors for the Louisiana Music Educators Association as the University Division Representative. Andrew has worked as a clinician or adjudicator in Alabama, Georgia, Louisiana, Mississippi, North Carolina, South Carolina, Tennessee, and Izmir, Turkey. Prior to his tenure at Louisiana College, Andrew taught middle and high school bands at Gardner Newman Middle School (LaGrange, GA) and Newnan High School (Newnan, GA). He is a member of the College Band Directors National Association, the National Band Association, the National Association for Music Education, and Phi Mu Alpha Sinfonia Fraternity.

# Consultants

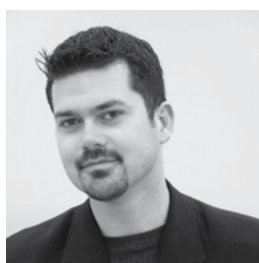


## Marcia Neel

**Consultant  
Band Division Clinic**

*Marcia Neel of Music Education Consultants, Inc. will present a clinic titled "A Guide for Instrumental Music Educators: Secret TIPS Revealed from Teaching Legends and Leading Music Educators" on Sunday, November 22, 2015, from 2:00 – 2:50 p.m.*

A veteran of 37 years in public school music education, Marcia Neel has directed successful secondary music programs in Connecticut, Ohio, Massachusetts and Nevada and served as Secondary Fine Arts Supervisor for the Clark County School District (CCSD) – the nation's fifth largest – in Las Vegas for 14 years. Her expertise in curriculum development as well as recruitment and retention led to a total of more than 55,000 enrollees in the CCSD's secondary elective Music Education Program. Marcia now serves as president of Music Education Consultants, Inc., a consortium of music education professionals who work with a variety of educational organizations, arts associations, and school districts to foster the growth and breadth of school-based music education programs. She serves as Educational Advisor to The Music Achievement Council, a 501(c)(6) non-profit corporation whose main focus is professional development to assist educators reach and serve more music students.



## Eric C. Melley

**Consultant  
Band Division Clinic and General Advocacy Session**

*Eric C. Melley will present a Band Division clinic titled "Beyond Performing: Creating, Responding and Connecting in the Ensemble Classroom" on Sunday, November 22, 2015, from 3:00–3:50 p.m.*

Eric Melley is in his third year on the music faculty at the University of Louisiana at Lafayette, where he serves as Assistant Director of Bands and Director of the "Pride of Acadiana" Marching Band. From 2010 through 2012 Melley served on the faculty at Louisiana State University as Assistant Director of Bands, and for six years he was on the instrumental music faculty in the Belmont Public Schools (Massachusetts), the last four years as Director of Bands. His ensembles at Belmont consistently received superior ratings at regional and national festivals and students under his direction have performed for audiences in Hong Kong, Prague, Budapest, Vienna, Salzburg, and throughout the United States.

Melley holds the Bachelor of Music degree in trumpet performance and music education from the University of Massachusetts and the Master of Music degree in Wind Conducting from Louisiana State University. In May of 2013, he completed his Doctor of Musical Arts degree in Conducting from Arizona State University. He has also served as the Assistant Director of the Maudslay Arts Center Concert Band in Newburyport, Massachusetts, and as a guest conductor, clinician, and adjudicator throughout the country.

In the summer of 2007, Melley was a selected participant in the National Band Association International Conducting Symposium in Canford, England and in 2009 conducted the United States Military Academy Band in concert at the First Annual West Point Conductors' Symposium. He holds professional affiliations with the College Band Directors National Association, National Association for Music Education, and the National Band Association. He has received honorary induction into Pi Kappa Lambda and Kappa Kappa Psi.



## Steven Menard

**Consultant  
Band Division Clinic**

*Steven Menard will present a Band Division clinic titled "Building a Better Brass Section: Keep it Simple!" on Sunday, November 22, 2015, from 3:00–3:50 p.m.*

Steven Menard is a native of Slidell, Louisiana and joined the brass faculty at LSU in 2011. He holds a bachelor's degree from Northwestern University, and a master's degree from the San Francisco Conservatory of Music. Mr. Menard maintains an active performing and teaching schedule. He has presented recitals and master classes around the country, as well as in Canada and South America. In 2008, Mr. Menard won first prize in the Frank Smith competition at the International Trombone Festival.

Mr. Menard has enjoyed an extensive performing career in the U.S. Currently, he is Principal trombone with the Baton Rouge Symphony, and a member of the Utah Festival Opera. He has performed with the Chicago Symphony, San Francisco Symphony, San Antonio Symphony, Oregon Symphony, and many others. In 2010 he toured with the national company of "Fiddler on the Roof". Steve's wife, Lauren, is a violist with the Louisiana Philharmonic Orchestra. They enjoy spending their summers together performing with the Utah Festival Opera.





# Consultants



## Amanda L. Schlegel

**Consultant  
Band Division Clinic**

*Amanda L. Schlegel will present a Band Division clinic titled "Armed and ready: Music perception and cognition research to enhance your musical teaching, rehearsing, listening, assessment, and enjoyment" on Sunday, November 22, 2015, from 6:00 – 6:50 p.m. Amanda will also serve as Conductor/Consultant for the CNAfME Summit Band Rehearsal Demonstration and Interactive Session Band Division Clinic also titled "When Words Fail: Effective, Efficient, and Engaging Non-verbal Rehearsal Strategies" on Monday November 23, 2015, from 8:00-8:50 a.m.*

Originally hailing from Pennsylvania, **Amanda Schlegel** has been an assistant professor of music education at The University of Southern Mississippi since 2011. While in Pennsylvania, Amanda taught instrumental music in the public schools of western Pennsylvania. In addition, she also taught secondary vocal music, elementary general music, drama, theory, and directed several musical theater productions. Prior to Southern Miss, Amanda was an adjunct lecturer in music education at Southeastern Louisiana University in Hammond.

Amanda holds a Bachelor of Music degree from Grove City College, a Master of Music from Northwestern University in Evanston, IL, and a Ph.D. from Louisiana State University. She teaches undergraduate courses in secondary instrumental music methods, introduction to music education, music appreciation, and graduate courses in quantitative research methods, psychology of music, measurement and evaluation, and a variety of seminar courses. She also advises undergraduate and graduate research and serves as the GEC assessment coordinator for the School of Music. She continues as an active consultant and clinician to a variety of programs and teachers in the region.

Her research interests surround music perception and cognition as a function of music teacher/conductor effectiveness. Her research has been presented at regional, national, and international conferences, most notably the National Biennial In-Service Conference of NAFME: The National Association for Music Education, the Annual Music Education Week in Washington D. C. (MENC), International Symposium for Research in Music Behavior, Society for Music Teacher Education (SMTE), Society for Music Perception and Cognition (SMPC), and the International Conference on Music Perception and Cognition (ICMPC).

Her scholarly work has been published in the Journal of Research in Music Education, Bulletin of the Council for Research in Music Education, Psychology of Music, and International Journal of Music Education. She is a member of NAFME, College Music Society, Society for Music Perception and Cognition (SPMC), Society for Music Teacher Education (SMTE), Society for Research in Music Education (SRME), and National Band Association. She currently serves as chair of the NAFME Perception and Cognition Special Research Interest Group (SRIG) and chair-elect of the NAFME Affective Response Special Research Interest Group.



## Kevin Rabon and Amanda Stevenson

**Consultant  
Band Division**

*Kevin Rabon and Amanda Stevenson will co-present a Band Division Clinic titled "Creating a Culture of Excellence in Your Band Room" on Sunday, November 22, 2015, from 8:00– 8:50 p.m.*

Kevin Rabon is a product of the Bossier Parish School system where he attended Bossier High School under the direction of Barry Vowell. He attended Louisiana State University where he studied with Frank Wickes, Linda Moorehouse, and James Byo to earn his Bachelor's degree in Music Education in 1996. While at LSU, Mr. Rabon was a 4-year member of the Phantom Regiment Drum & Bugle Corps from Rockford, Illinois playing trumpet and mellophone. Mr. Rabon began his teaching career in Seguin, Texas as a middle school assistant working with Mark Waymire and Randall Brownlee. He has taught at both the middle school and high school level in Austin, Texas as an assistant and head director, and his concert bands and marching bands were consistent UIL Sweepstakes award winners. Mr. Rabon served on the brass staff for the Phantom Regiment from 1999-2009 as the trumpet and mellophone instructor and as Brass Caption Head from 2003-2007. As a member of the Phantom Regiment staff, Mr. Rabon taught with Jeff Shaw, Paul Rennick, Freddy Martin, Sam Pilafian & Pat Sheridan, and many other talented teachers from across the country. Mr. Rabon has been a clinician for the Phantom Regiment Drum Major Camps at the University of Louisiana-Lafayette and is an active clinician and adjudicator of concert and marching ensembles across the country. He is in his 20<sup>th</sup> year of teaching and currently is the Director of Bands at Cope Middle School in Bossier City, Louisiana.

Kevin Rabon is married to Paula Rabon and they have two children, Emeri and Keller. He teaches a full private lesson studio of brass players who regularly place into All-District and All-State ensembles, and he plays trumpet with the Cypress Baptist Church Orchestra as a freelance musician. He enjoys time away from the musical arts on the golf course and on his motorcycle whenever time allows. He is a member of Phi Mu Alpha Sinfonia, Louisiana Music Educator's Association, and the Texas Music Educator's Association.



Amanda Stevenson is the Director of Bands at William H. Taft High School in San Antonio, TX. Throughout her career she has instructed various students in music ranging from beginners to collegiate members. Her instructional experience extends throughout Texas including Texas State University, Georgetown High School, Winston Churchill High School, Bowie High School and Harlingen High School. Mrs. Stevenson has been with the Taft High School music program as Conductor of the Wind Ensemble, Director of Jazz Studies, Director of the Raider Marching Band and instructor of Instrumental Ensembles since Fall 2015. Prior to her time at Taft, Amanda was the Associate Band Director at Georgetown High School since 2007.

Amanda has a strong affiliation with Drum Corps International (DCI). She recently finished her second summer on Brass Staff for the World Class Crossmen Drum and Bugle Corps. She has also served on Brass Staff for the Phantom Regiment and Visual Staff with Revolution Drum and Bugle Corps. Though her primary instrument is Saxophone, Mrs. Stevenson played Euphonium with Capital Regiment and started her corps career on Baritone with Revolution Drum and Bugle Corps. Through these experiences, she has worked with many top educators throughout the country.

Mrs. Stevenson received her Bachelor Degree in All-Level Music Education from Texas State University in 2007. She studied Wind Conducting with John Stansberry, Howard Hudiburg and Dr. Rod Schueller. Amanda has continued a close relationship with the School of Music as the Texas State Summer Band Camp Coordinator for about a decade.

Since her time at Texas State, Mrs. Stevenson has had continued success with Superior Ratings at the University Interscholastic League Concert, Sightreading and Marching Contests. She has been a Texas Music Educator Association Clinician, has been the recipient on numerous grants for her programs and has achieved the Mark of Excellence in National Jazz Honors Award.

Mrs. Stevenson is an active clinician, performer and adjudicator in the United States. Her professional affiliations include Texas Music Educators Association, Texas Bandmasters Association, Texas Jazz Educators Association, and Sigma Alpha Iota. Amanda currently lives in San Antonio, Texas where she continues to educate and instruct students of all levels.



# Consultants



## Christopher Drew Dickey

**Consultant  
Band Division**

*Christopher Drew Dickey will present a Band Division Clinic titled "Art vs. Accuracy: A Balanced Approach to Ensemble Instruction" on Sunday, November 22, 2015, from 8:00–8:50 p.m.*

**Drew Dickey** currently serves as the Arts and Technology Curriculum Facilitator at the Southwood Academy of the Arts and the Associate Director of Bands at Westside High School in Anderson, South Carolina. Prior to his appointment with the Anderson 5 School District, Mr. Dickey served as a Graduate Conducting Associate with the Louisiana State University Bands.

Mr. Dickey has previously held positions as the Director of Choirs and Associate Director of Bands at South Aiken High School in Aiken, South Carolina and as the Director of Bands at Cane Bay High School in Summerville, South Carolina. Concert and marching ensembles under his direction have earned numerous awards and accolades, and he serves as an active judge, clinician, and performer throughout the United States.

Mr. Dickey holds the degrees of Master of Music in Music Education from Ithaca College, Master of Music in Wind Conducting from Louisiana State University, and Bachelor of Music in Music Education from the University of South Carolina.

His professional affiliations include the College Band Director's National Association, the National Association for Music Education, the International Tuba Euphonium Association, Kappa Kappa Psi, and Phi Mu Alpha Sinfonia. ctors National Association, the National Band Association, the National Association for Music Education, and Phi Mu Alpha Sinfonia Fraternity.



## Douglas Bakenhus

**Consultant  
Band Division Clinic**

*Douglas Bakenhus will present a clinic titled "Simplifying the Bassoon: It is Not as Difficult as You Think" on Monday, November 23, 2015, from 9:00–9:50 a.m.*

**Dr. Douglas Bakenhus** is the music director of the Natchitoches-Northwestern Symphony at Northwestern State University of Louisiana, where he also teaches bassoon, aural skills, string methods, and conducting. His music degrees are from the University of Texas at Austin (DMA 2006, B.Music Ed.1983), Texas A&M University-Commerce (M.M. conducting 1985), and he has completed additional graduate courses in conducting and bassoon-performance at the University of Michigan.

In addition, Dr. Bakenhus has been the music director of the Northeast Texas Symphony since 2002, and was the music director of the Austin Philharmonic from 2001-2004. He held positions as a college band director (1989-1997) at Texas Lutheran University, and the University of Mississippi. He also has 5 years of high school and middle school orchestra teaching experience in Austin and Houston, TX. Throughout his teaching career, Dr. Bakenhus has remained active as a guest conductor, clinician, and bassoonist. Recent international conducting appearances include The *Sinfonietta* Bratislava in Slovakia, and the San Pedro Sula City Chamber Orchestra in Honduras.

He has also performed abroad as a bassoonist with the NSU Faculty Woodwind Trio in Canada, Slovakia, England, and the Czech Republic. He recently recorded a CD of flute, bassoon, and piano trios by Beethoven, Kuhlau, and Donizetti, with his wife flautist Dennette McDermott, and pianist Katerina Zaitseva, released by Classical Records ([www.classicalrecords.ru](http://www.classicalrecords.ru)). He regularly performs in orchestras throughout the "Ark-La-Tex" including the Shreveport Symphony, the Longview Symphony, the South Arkansas Symphony, and the Texarkana Symphony.

In addition, he has participated in the Tafelmusik Baroque Summer Institute on his baroque bassoon, and has made recent appearances in ensembles such as the Baroque Artists of Shreveport, the Austin Baroque Orchestra, Ars Lyrica of Houston, the Houston Bach Society, and the Mercury Baroque Ensemble of Houston.



## Robbie Freeman

**Consultant  
Band Division Clinic**

*Robbie Freeman will present a clinic titled "It's Just Intonation: Using the Yamaha HD 200 for a Better Band" on Monday, November 23, 2015, from 9:00–9:50 a.m. This session is sponsored by Phi Beta Mu.*

Robert is Director of Bands at West Monroe High School, a position he has held since 2003. Previously, he was Associate Director from 1997-2003. Robert is a native of West Monroe, LA and a 1985 graduate of West Monroe High School. He received the Bachelor of Music Education from Northwestern State University in Natchitoches, LA and the Master of Music in Euphonium Music Performance from the University of Southern Mississippi. Robert is also a former marching member of the Phantom Regiment Drum and Bugle Corps from Rockford, IL. He has held positions as Brass Professor at Pearl River Community College in Poplarville, MS and Director of Bands at North Forrest High School in Hattiesburg, MS. Currently, he is on the Brass Staff with the Louisiana Stars Drum and Bugle Corps from Lafayette, LA.

Robert's bands have consistently garnered superior ratings in marching, concert and sight-reading. His bands have placed highly in regional, state and national performance competitions. They have appeared in many high profile events, including the 2005 Inaugural Parade of George W. Bush, the Inauguration of LA Governor Bobby Jindal, and recently made their first international appearance at the 2014 London New Years Day Parade in Westminster. His professional affiliations include Phi Beta Mu, Phi Mu Alpha Sinfonia, LMEA and the District I Band Directors Association.

# Consultants



**Dr. Kyle Glaser**  
Consultant  
Band Division Clinic and General Session

*Dr. Kyle Glaser will present two clinics. On Sunday, November 22, 2015, from 6:00-6:50 p.m., Dr. Glaser will present a general session titled "Pay It Forward: Strategies for Mentoring Student Teachers." On Monday, November 23, 2015. Dr. Glaser will present a Band Division session titled "From Start to Finish: Thoughtful Programming for Band" will be from 10:00-10:50 a.m.*

**Dr. Kyle Glaser** serves as the Associate Director of Bands at Texas State University. His responsibilities include conducting the Symphonic Winds, overseeing all athletic bands, and teaching various methods classes. He holds a Doctor of Music degree in Conducting from the Indiana University Jacobs School of Music, a Master of Music degree in Conducting from Rutgers University, and a Bachelor of Science in Music Education from the Pennsylvania State University. He has studied saxophone performance with Daniel Yoder and Otis Murphy.

Prior to his appointment at Texas State, Glaser served as the Director of Bands at the East Stroudsburg Area South High School in northeastern Pennsylvania. Under his direction, bands at East Stroudsburg received numerous Superior ratings at PMEA and PBA Concert Band Adjudications, and were chosen in 2002 and 2005 to perform at the Annual PMEA In-Service State Conference. He has also served as the interim director of the East Stroudsburg University/Community Concert Band, and was the co-director of the COTA Cats, a regional high school honors jazz ensemble that was founded by jazz legend Phil Woods.

Glaser maintains an active schedule as a clinician, guest conductor, and adjudicator, and has also served as a contributing author to the GIA Teaching Music Through Performance in Band series. His professional memberships include the College Band Directors National Association, the National Band Association, the World Association of Symphonic Bands and Ensembles, the National Association for Music Education, the Texas Music Educators Association, and the Texas Bandmasters Association.



**Brett Babineaux**  
Consultant  
Band Division Clinic

*Brett Babineaux will present a clinic titled "Lessons from Vincent... Who Will Cut Off Their Ear In Your Class?" on Monday, November 23, 2015, from 10:00-10:50 a.m.*

Brett Babineaux is currently in his 18th year of teaching instrumental music. He received a Bachelor of Music Education degree from the University of Louisiana at Lafayette (formerly USL). Currently in his ninth year of teaching at Broussard Middle School, he has held similar positions at Lafayette High School, Seventh Ward Elementary, Henry Elementary, and New Iberia Senior High School. He previously served as guest clinician for the Vermilion Parish Middle School Honor Band, Iberia Parish Middle School Honor Band, St. Charles Parish Middle School Honor Band and the Southwest Louisiana Band Director's Association (SLBDA) District III Honor Band, and the Louisiana Bandmasters Association (LBA) All-Star Middle School Band. He also adjudicates various marching band contests and concert band assessments throughout south Louisiana. Mr. Babineaux's bands have consistently received superior ratings on the district and state levels.

Mr. Babineaux currently serves as the District III representative with the Louisiana Music Educators Association. He also serves as co-chair for the SLBDA District III Honor Band auditions and conference. His professional affiliations include the National Association for Music Education, the Louisiana Music Educators Association, the Southwest Louisiana Band Directors Association, Phi Beta Mu, and is an advisor for the NAFME TRI-M Music Honor Society.

He and his wife, Jennifer, are the proud parents of 3 adorable girls; Emma, Anna, and Amelia.



**Dr. Adrianna Marshall**  
Consultant  
Band Division Clinic

*Dr. Adrianna Marshall will present a clinic titled "What Non-String Players REALLY Need to Know About Teaching Orchestra" on Monday, November 23, 2015, from 11:00-11:50 a.m.*

Dr. Adrianna A. Marshall, violist, is an assistant professor in music education at Western Illinois University, she also serves as the music teacher certification advisor for undergraduate students. Currently, Dr. Marshall teaches music education and string methods course offerings such as *Introduction to Music Education, String Techniques, Teaching and Assessment in Secondary School Music, American Popular Music, and What to Listen for in Music.*

As a music clinician, Dr. Marshall has presented sessions on various topics regarding string education in the United States, such as, "The Urban Orchestra", that provided strategies on establishing an orchestra programs in an inner-city environment and recommendations for maintaining an orchestra program in urban school districts." Diversify Your Music Program: Strategies to Get Everyone Involved", which offered approaches to increase minority and low-income students' participation in public school music programs. From 2003-2009, Dr. Marshall was the manager of two professional string ensembles, The Crescent Quartet, and The Grandeur Trio, in which she also played viola and violin.

Dr. Marshall received a Bachelor of Arts degree in music at Xavier University of Louisiana. She completed her Master of Music degree in music education at the Peabody Conservatory of Johns Hopkins University; and completed her Doctor of Philosophy degree in music education at the University of Florida. She has many years of experience in teaching orchestra in the public schools, as well as being a trained Suzuki violin teacher registered with the Suzuki Association of the Americas.

# Consultants



## Eric W. Richards

**Consultant  
Band Division Clinic**

*Eric W. Richards will present a clinic titled "Quality vs. Suitability: Finding the Balance" on Monday, November 23, 2015, from 11:00–11:50 a.m.*

Dr. Erik W. Richards is Director of Bands and Assistant Professor of Music at Delta State University in Cleveland, Mississippi. He oversees all aspects of the band program, directs the university wind ensemble and marching band, serves as coordinator of music education, and teaches courses in conducting and instrumental music methods. He holds a Ph.D. from the Florida State University, a Master of Music from Virginia Commonwealth University, and a B.S. from Indiana University of Pennsylvania. Dr. Richards is an active clinician, conductor, and adjudicator, has had original research published in several music education journals, and is a contributor to the *Teaching Music through Performance in Band* series. Dr. Richards is an Artist/Clinician for Jupiter Band Instruments, Inc.



## Demonstration and Interactive Session Band

**Collegiate Division Clinic**

*A CNAfME Summit Band Rehearsal Demonstration and Interactive Session Band Division Clinic will present a clinic titled "Band Rehearsal Techniques" on Monday November 23, 2015, from 8:00-8:50 a.m. This session is sponsored by J. W Pepper.*

**Bring your instrument and music stand to participate in this rehearsal demonstration band.** Guest Clinicians will demonstrate effective rehearsals techniques used in their programs. College students and Band Directors will read the

concert music and "experience" the changes as they occur in real time in the ensemble.

**To reserve your place, please register at <http://goo.gl/forms/ZG81NL0EtO>**

Conductor/Consultant for the session is **Amanda Schlegel**, professor of music education at The University of Southern Mississippi.



## Networking and Organization Session (Panel Discussion)

**CNAfME Collegiate Chapter Officers  
Collegiate Division**

*CNAfME Collegiate Chapter Officers will conduct a panel discussion for Music Education Students from Louisiana College & Music Education Programs as a CNAfME Summit General Session titled "Collegiate Organizational Meeting" on Sunday November 22, 2015, from 1:00-1:50 p.m.*



## Dr. Gordon Towell

**Consultant  
Collegiate Division General Session**

*Dr. Gordon Towell will present a session titled "Jazz Pedagogy for the School Jazz Ensemble" on Monday, November 23, 2015, from 9:00-9:50 a.m.*

### Gordon Towell DME

When Saxophonist Gordon Towell's not teaching jazz in a Loyola University classroom, he's likely to be performing with many national acts. Towell, who holds a BED in music education from the University of Alberta, an MM in jazz studies from Indiana University and a DME with a cognate in jazz studies from the College Conservatory of Music at the University of Cincinnati, has shared his expertise with students at the University of Cincinnati, Morehead State University, Indiana University, Keyano College, Grant MacEwan College, and numerous public schools. As Coordinator of jazz studies at Loyola University, New Orleans, Towell directs jazz band I and jazz combos, teaches jazz history, arranging/composition, and improvisation. He also finds time to adjudicate, guest solo and perform with national and international artists, and conduct throughout Canada and the U.S. His saxophone performance can be heard on *Outlier*, *Sketch Pad*, *Ask Me Now*, *Blue Duck Suit*, and *Still Friends*, which are all available through cdbaby.com. These CDs have been featured on NPR, CBC, and CKUA radio. Gordon is a recipient of the 2001 Morehead State University's Distinguished Creative Productions Award. He is a Conn Selmer clinician and plays Selmer saxophones.

# Consultants



## Madeline Thibodeaux and Olivia Seal

**Consultants**  
**Collegiate Division Clinic**

*Madeline Thibodeaux and Olivia Seal will co-present a CNAfME Summit General Session titled "Kindermusik Teaching in the General Music Classroom" on Sunday, November 22, 2015, from 4:00-4:50 p.m.*

### Madeline Thibodeaux

A native of New Mexico, Madeline came to New Orleans to go to Loyola University where she received her Bachelor's degree in Music Education. Trombone and bass trombone are her primary instruments. Upon graduating from Loyola, she received certification in Orff Schulwerk from Trinity University in San Antonio, Texas. She taught band and choir for two years at St. Bernard Middle School in St. Bernard, Louisiana. She found her educational calling, though, when she discovered Kindermusik, and has been teaching Kindermusik classes ever since. She loves teaching Kindermusik because of the joy she sees it bringing to the families and the knowledge that she is touching the minds and hearts of the little ones in her classes. When she is not teaching Kindermusik, she teaches private lessons on trumpet, trombone, and tuba. She and Paul welcomed their first son in March 2013, and she enjoys taking him to Kindermusik class and using the songs and activities from class to make parenting easier.



### Olivia Seal

Olivia Seal from Covington, Louisiana, was a 2012 graduate of Mandeville High School and New Orleans Center for Creative Arts (NOCCA) with a Vocal Music concentration. Olivia has been pursuing her passion for music since she began piano lessons at the age of 6 and voice lessons at the age of 15. This year, Olivia is teaching her second year of Group Theory for the Loyola Preparatory Arts Program. Olivia also became a certified Kindermusik teacher in September of 2015 and teaches 2 classes a week. Alongside teaching, Olivia loves to sing with her church choir on Sundays. Currently, she is completing her final year at Loyola University New Orleans seeking a Bachelor's in Vocal Music Education.



## Ginny Medina-Hamilton

**Consultant**  
**Collegiate Division Clinic**

*Ginny Medina-Hamilton will present a CNAfME Summit Clinic titled "My Administrator Doesn't Speak 'Music' – Translating Teacher Evaluation Rubrics and Classroom Strategies for the Music Class" on Monday, November 23, 2015, from 10:00-10:50 a.m.*

Ginny Medina-Hamilton is presently an assistant principal at Lakewood Elementary in St. Charles Parish, Louisiana. Prior to that, she served as the choir director and general music teacher at J.B. Martin Middle School where she also served as the Teacher Support Leader for the Arts. Previously, she was the instructor of Talented Vocal Music for the Terrebonne Parish School District. Mrs. Hamilton started her music education career as the director of concert choirs, show choirs, and musical theatre at her high school alma mater, Vanderbilt Catholic in Houma.

She holds a Master of Education in Educational Leadership from Nicholls State University and a Bachelor of Arts in Music Education from the University of New Orleans.

She is privileged to serve as an adjudicator for Solo and Small Ensemble Festivals and Large Ensemble Festivals throughout South Louisiana in addition to conducting elementary and middle school district and parish honor choirs.

Mrs. Hamilton served on the Louisiana Department of Education model arts lesson plan writing team for middle school music, and as a chairperson for the Louisiana textbook adoption committee for music. She participated in the revision process of the National Core Arts Standards and offers professional development on teacher evaluation in the music classroom. In St. Charles Parish, Mrs. Hamilton is a consultant for the Arts Advisory Council and various music curriculum revision committees.

Mrs. Medina-Hamilton is and has been an active member of the American Choral Directors Association (ACDA), National Association for Music Educators (NAfME), Louisiana Music Educators Association (LMEA), and District VII Choral Directors Association for the last nineteen years. Within the District Choral Directors Association, Mrs. Hamilton has served as president, secretary, webmaster, and chairperson.



## Michelle Wilkinson-Nelson

**Consultant**  
**Collegiate Division Clinic**

*Michelle Wilkinson-Nelson will present a CNAfME Summit General Session titled "Improvisation in the Beginning Strings Class" on Monday, November 23, 2015, from 11:00-11:50 a.m.*

Michelle Wilkinson-Nelson teaches piano and strings at McKinley Middle Academic Magnet School for the Visual and Performing Arts in the East Baton Rouge Parish School System. She is the acting president of the Louisiana chapter of the American String Teachers Association. Michelle has hosted numerous Electrify Your Strings events featuring Mark Wood, Laura Kaye and Bridgid Bibbens for her students and the district. She also piloted Christian Howes' Creative Strings method of improvisation for strings players with her middle school students. Prior to moving to Baton Rouge in 2012, Michelle taught strings for 25 years in the University Place School District in Tacoma, WA and was named PTA teacher of the year in 2012.



# Consultants



## 2015 LMEA Outstanding Young Music Educator Recipients

**Consultants**  
**Collegiate Division Clinic**

*Nathan Trahan, Ruston High School; Carol Sikes, West Monroe High School; Nathan Sumrall, Northshore High School; and Cameron Weatherford, Alexandria Senior High School will co-present a CNAfME Summit General Session with a panel discussion titled "The 1<sup>st</sup> 5 years" on Sunday, November 22, 2015, from 2:00-2:50 p.m.*



### Annie Young-Bridges

**Consultant**  
**General Session**

*Annie Young-Bridges will present a session titled "Therapeutic Yoga for Musicians" on Sunday, November 22, 2015, from 8:00-8:50 a.m.*

Annie is a full-time strings teacher in St. Tammany Parish and freelance private violin teacher/performer and yoga teacher. She began her violin study in Spartanburg, South Carolina in 1973 with Dean Angeles and Pam Tellejohn-Hayes. She earned her Bachelor of Music Education from USM in 1985, and went on to direct high school orchestras in Charlotte, North Carolina, Mobile, Alabama, and Denton, Texas before returning to the Gulf Coast in 2004. Recently she founded the NorthShore Strings Chamber Orchestra in Covington, and is a regular guest director with the Greater New Orleans Youth Symphonies.

Annie is also a registered teacher of Suzuki violin. In 2006 Annie formed a student Yoga Club to aid the student victims of hurricane Katrina. She earned her RYT 200 (Registered Yoga Teacher) in 2014 at the Yoga School of Louisiana in Covington with Becky Gellatt. She teaches yoga weekly in Covington, as well as the state (LMEA) and national (ASTA) conferences. Annie is dedicated to sharing the benefits of yoga to others, especially string players, and teaches the yogic principles of breath and movement in her classes.

Annie has three grown children and lives in Covington with her husband, Jeff, a bass player, and their four cats and two dogs. They enjoy walking, canoeing and playing music together.



### Dr. Edward McClellan

**Consultant**  
**General Session (Research)**

*Dr. Edward McClellan will facilitate a session titled "Research Presentations" on Sunday, November 22, 2015, from 10:00-10:50 a.m.*

Edward R. McClellan is the Mary Freeman Wisdom Distinguished Professor of Music and Coordinator of Music Education at Loyola University in New Orleans, Louisiana. His degrees are from Duquesne University (BSME and MME) and The University of North Carolina at Greensboro (PhD). McClellan has twenty years of experience teaching music from the elementary to college levels in Florida, North Carolina, Pennsylvania, and Virginia. Public school experience includes fulfilling responsibilities as Director of Bands, Director of Orchestra, Music Director, and Chairman of Fine Arts. His ensembles have consistently received Superior ratings at the district, regional, state, and national levels. McClellan is active as an adjudicator and clinician in Louisiana, North Carolina, South Carolina, Texas, and Virginia. He is a member of the College Music Society, International Society for Music Education, Music Educators National Conference, Louisiana Music Educators Association, Louisiana Band Association, National Council of Supervisors of Music Education, Society of Music Teacher Education, Society of Research in Music Education, and National Band Association.

## Guest Performances / Guest Conductors

### Centenary College Choir and Camerata

**Guest Performance Vocal Division**

**Conductor: Dr. David Hobson and Dr. Cory D. Wikan**

*The Centenary College Choir and Camerata will present a guest performance under the direction of Dr. David Hobson and Dr. Cory D. Wikan on Friday, November 20, 2015 from 1:00-1:50 p.m.*



**Centenary Camerata**, founded in 1983, is the select chamber choir from the Hurley School of Music. This SATB group of 24 singers is dedicated to quality artistic performances of choral repertoire from all historical periods to the highest musical standards. The composition of the group is primarily voice majors, though membership is open to all Centenary students by audition. Camerata presented an Ensemble Debut Concert at Carnegie Hall in 2007 and was one of nine featured choirs at the National Collegiate Choral Organization Conference at Yale University in 2009. They have been invited to perform as a featured choir at the Southern Division Convention of the Music Educators National Conference, the Spivey Hall Educational Concert Series and the Louisiana Conference of the American Choral Directors Association. Camerata performances are lauded for technical excellence combined with genuine understanding of musical expression.

# Guest Performances / Guest Conductors



**Dr. Cory D. Wikan**, Visiting Assistant Professor of Music, joined the Hurley School of Music faculty in the fall of 2012. In addition to conducting Camerata, he teaches music education, music history, and choral conducting courses. Prior to Centenary College, Cory conducted choirs and taught at Northwestern (Evanston, IL) and Boston Universities. A tenor, Cory occasionally enjoys performing with a variety of professional opera companies, choral ensembles, and other organizations throughout the United States. He holds a Bachelor of Arts degree in Music from Luther College (Decorah, IA), a Master of Music degree in Vocal Performance from Northwestern University, and a Doctor of Musical Arts degree in Choral Conducting from Boston University.



**Centenary College Choir** serves as a musical ambassador for Centenary College. Established in 1941, the Choir is the oldest and largest ensemble at Centenary College, made up of 40-50 singers of diverse majors. The group sings an extremely varied repertoire of music, from classical major works with orchestra to folk and Broadway standards. Nicknamed "America's Singing Ambassadors" by the press, the Choir has toured throughout the world, performing in 32 countries on 6 continents, making an international tour every other year. The Choir is well-known for its engaging visual and aural appeal, and for its heart-felt connections to audiences. The group has the high distinction of having performed seven times at the White House, two lengthy engagements at Radio City Music Hall, for

American Choral Directors and International Lions Club conventions, for numerous conferences of the United Methodist Church, at famed cathedrals such as Notre Dame in Paris and St. Peters in Rome, and in renowned concert venues such as the Sydney Opera House.

Membership in the Centenary College Choir is by audition only. The group is made up of both music majors and non-majors, and thrives under a vibrant system of teamwork and student leadership.



**Dr. David Hobson** began directorship of the Centenary College Choir in the fall of 2007, becoming only the fourth conductor in the choir's 75 year history and the second to hold the prestigious A.C. "Cheesy" Voran Chair. He also serves as Director of Choral Activities for the college as well as heading the Sacred Music program. Continuing the rich legacy of his predecessors, Dr. Hobson has led the Choir in an annual schedule of more than 35 regional and international performances, including his Sydney Opera House conducting debut in 2009. He later prepared the ensemble for its Carnegie Hall debut in 2012, performing Choir alumnus Dr. James Eakin's world premiere of *Flowers Over the Graves of War*. He is a 1998 alumnus of Centenary College and the Choir, earning a Bachelor of Music degree with honors. He later completed the Master of Sacred Music program at Emory University and earned the Doctorate of Musical Arts in Choral Conducting at Louisiana State University.

Dr. Hobson remains active in church music ministry, currently serving as Director of Music Ministries at First United Methodist Church of Shreveport. He has also led several seminars in the area of music and worship for various churches and is available as a guest choral clinician in both academic and religious settings.

## The McNeese State University Wind Ensemble

Guest Performance Band Division

Conductor: Dr. Jay Jacobs

*The McNeese State University Wind Ensemble will present a guest performance under the direction of Dr. Jay Jacobs on Sunday, November 22, 2015 from 7:00 to 7:50 p.m.*



**Dr. Jay N. Jacobs** is Associate Professor of Music and Director of Bands at McNeese State University in Lake Charles, Louisiana. Joining the McNeese faculty in 2007, he directs the Cowboy Marching Band and Basketball Band, conducts the wind symphony and teaches courses in conducting. Dr. Jacobs holds the Bachelor of Music in Music Education degree from West Virginia University and earned the Masters of Music in Conducting and Doctor of Philosophy in Music Education degrees from the University of Florida.

Prior to arriving in Lake Charles, he served as director of bands in Kirkland, Illinois, leading middle school and high school instrumental music programs. While at the University of Florida, he conducted all levels of concert ensembles, taught music education courses, and was recognized as the College of Fine Arts Outstanding Graduate Student in 2007.

Dr. Jacobs has served as a clinician and adjudicator in West Virginia, Illinois, Georgia, Florida, South Carolina, Louisiana and Texas, and as a presenter at several professional conferences. He has performed in or conducted ensembles internationally, and has served as a guest conductor with the Lake Charles Symphony Orchestra. He most recently received the McNeese President's Award for Outstanding Mentorship and was selected as Faculty Member of the Year by the McNeese Student Government Association.



**McNeese State University Wind Symphony:** The Wind Symphony is the premiere performance organization of the McNeese State Band Program. The ensemble fosters the highest performance standards while offering its members an opportunity to expand their technical, intellectual, and musical horizons. The group seeks to broaden performance and teaching skills through the programming of exemplary literature while fostering an interest in the wind band as an integral part of the American musical scene. The Wind Symphony offers a creative and positive music-making environment dedicated to performing outstanding and challenging works of diverse musical styles, while furthering wind music of artistic and historical significance. Members of the Wind Symphony have exceptional opportunities to work with some of the world's finest soloists, composers, and conductors. The ensemble performs multiple concerts each semester, frequently tours in Louisiana and Texas, and last performed at the LMEA Convention in 2010.

# Guest Performances / Guest Conductors

## The Northwestern State University Jazz Ensemble

Guest Performance Jazz Division

Conductor: Galindo Rodriguez

The Northwestern State University Jazz Ensemble, under the direction of Galindo Rodriguez will present a guest performance on Saturday, November 21, 2015, from 6:00 – 6:45 p.m.



**Galindo Rodriguez** earned the Bachelor of Music and the Master of Music Education from the University of North Texas. He performed as Principal Trumpet of the Chicago Civic Symphony from 1978-1980. From 1980-1984 he held the position of Principal Trumpet of the Boise Philharmonic and taught Applied Trumpet at Boise State University. He has performed with the Fort Worth Symphony, the Chicago Chamber Orchestra, and the American Chamber Orchestra of Chicago. In 1987 he earned the Certificate in Performance from Northwestern University in Evanston, Illinois. His teachers include Adolph Herseth and Vincent Cichowicz, former members of the Chicago Symphony, John J. Haynie, and Dr. Leonard Candelaria, former professors from the University of North Texas.

He joined NSU as Applied Trumpet Professor in 1988. In addition to applied trumpet he has taught, Techniques of Conducting, Brass Methods, directed the Brass Ensemble, The Trumpet Choir, and currently directs the Jazz Orchestra. He established the Jazz Concert Series in 1998 and the NSU Jazz Festival in 2002. Under his direction the University Jazz Orchestra has performed with Ellis Marsalis, Byron Stripling, Mike Williams, Mike Tomaro, Graham Breedlove, Mike Vax, Astral Project, Tony Dagradi, Matt Niess, Bill Watrous, and Allen Vizzutti, Ingrid Jensen, Rodney Whitaker, and Rodger Ingram. He has been host to the U. S. Army Blues, the Falconaires, and Maynard Ferguson's Big Bop Nouveau.



**The Northwestern State University Jazz Orchestra**, under the direction of Galindo Rodriguez has been host to numerous world-renown artists. Under Rodriguez's direction it has collaborate with Ellis Marsalis, Byron Stripling, Tony Dagradi, Astral Project, Mike Tomaro, Bill Watrous, Mike Williams, Graham Breedlove, Ingrid Jensen, Matt Niess, Rodney Whitaker, Allen Vizzutti, Roger Ingram. In addition it has presented Maynard Ferguson and Big Bop Nouveau, U. S. Air Force Falconairs, the Army Jazz Ambassadors, and the U. S. Air Force Dimensions in Blue.

The ensemble presents a series of four concerts per year, performs for the Annual Christmas Gala and the annual Lady of the Bracelet Pageant.

Former members of the ensemble have gone on to perform as members of the world-renown One O'Clock Lab Band from the University of North Texas, the United States Coast Guard Band, and "The Commandant's Own." The United States Marine's Drum and Bugle Corp.

**TBA**

Guest Performance Orchestra Division

Conductor: TBA

TBA will present a recital on Friday, November 20, 2015 from 6:00 to 7:00 p.m.

~~~~~  
**"Growing through Giving"**

## The Biggest Piano Event in the World

All Spring –  
 – Enroll Early

**Guild Auditions provide  
 milestones from year to year  
 as measurements of progress**

Sponsored by  
 the Largest  
 Organization of  
 Piano Teachers  
 in the World



Audition participation  
 and absence from school  
**APPROVED BY**  
**TEXAS EDUCATION**  
**AGENCY**

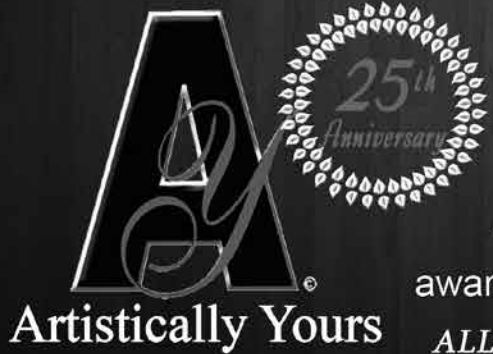
## National Guild of Piano Teachers

Teachers Division of  
 American College of Musicians  
 Founded in 1929 by Irl Allison  
 International Headquarters  
 P.O. Box 1807  
 Austin, Texas 78767 U.S.A.

I am interested in joining the Piano Guild. Please send  
 me more information about membership and  
 Guild Goals.

MR. \_\_\_\_\_  
 MRS. \_\_\_\_\_  
 MISS \_\_\_\_\_  
 (PRINT OR TYPE NAME AND ADDRESS)  
 ADDRESS \_\_\_\_\_  
 CITY \_\_\_\_\_ STATE \_\_\_\_\_ ZIP \_\_\_\_\_





Proud official designer for:

**LMEA**



**All-State, State, and District Festivals**

award winning graphic design • screen printing • embroidery

**ALL ARTWORK IS ORIGINAL, LICENSED & COPYRIGHTED**



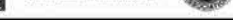
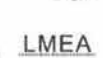
(225) 665-4840



artyourskim@cox.net

**artyoursdesign.com**

Artistically Yours  
is a proud  
supporter of:







## The Louisiana Musician

THE OFFICIAL PUBLICATION OF L.M.E.A.

PAT DEAVILLE, Editor

P.O. BOX 6294

LAKE CHARLES, LOUISIANA 70606

STANDARD  
U.S. POSTAGE  
PAID  
PERMIT # 51  
70601

# *Swicegood Music Company of Louisiana, Inc.*

COMPLETE MUSIC SERVICE

308 E. Prien Lake Rd. • Lake Charles, LA 70601

(337) 477-2704

email: [swicegoodmusic@bellsouth.net](mailto:swicegoodmusic@bellsouth.net)

*"WE SPECIALIZE IN BANDS"*



SELMER - KING - CONN - ARMSTRONG - BUFFET

JUPITER - LUDWIG - PEARL - MAPEX DRUMS

EDEN - MACKIE AMPS/PA SYSTEMS - HARTKE

JAY TURSER - WASHBURN - JASMINE - DAISY ROCK GUITARS

COMPLETE BAND ACCESSORIES

MUSIC - REPAIRS

*"Learn What Music Can Do For You"*

JOHN AND SUZANNE KELLEY

## **Right Note Studio**

PROFESSIONAL LESSONS  
PROVIDED AT ALL LEVELS