

SATB

Melodic

4/4

Soprano

Alto

Tenor

Bass

2 3 4

5 6 7 8

S

A

T

B

Rhythmic

4/4

2 3 4

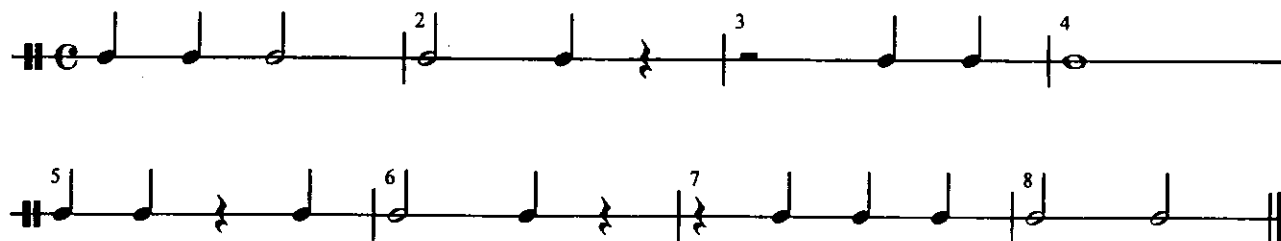
5 6 7 8

Unison Treble

Melodic



Rhythmic

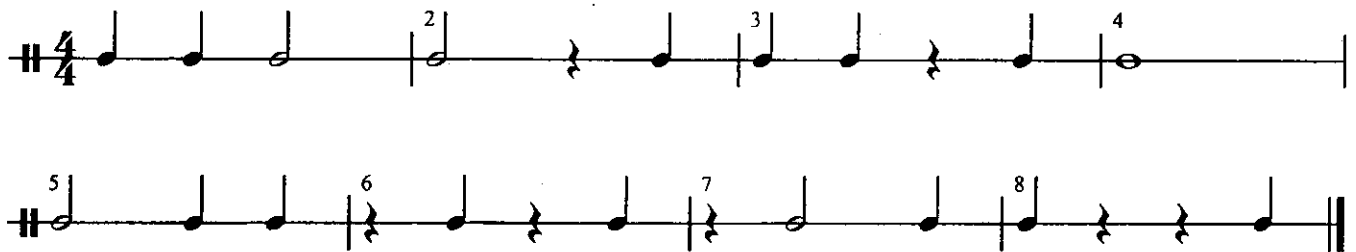


Unison Treble

Melodic



Rhythmic



Treble / Bass

Melodic

Treble
or Tenor

Bass

2 3 4

T

B

5 6 7 8

Rhythmic

2 3 4

5 6 7 8

2009 FLORIDA VOCAL ASSOCIATION SIGHT-READING MATERIALS

Dr. Carl P. Ashley

1. RHYTHM (Middle School)

Exercise 1 consists of 16 measures of music in 4/4 time, written on a single treble clef staff. The notes are as follows: Measure 1: G4, A4, B4, C5; Measure 2: D5, C5, B4, A4; Measure 3: G4, F4, E4, D4; Measure 4: C4, B3, A3, G3; Measure 5: F3, E3, D3, C3; Measure 6: B2, A2, G2, F2; Measure 7: E2, D2, C2, B1; Measure 8: A1, G1, F1, E1; Measure 9: D1, C1, B0, A0; Measure 10: G0, F0, E0, D0; Measure 11: C0, B0, A0, G0; Measure 12: F0, E0, D0, C0; Measure 13: B0, A0, G0, F0; Measure 14: E0, D0, C0, B0; Measure 15: A0, G0, F0, E0; Measure 16: D0, C0, B0, A0.

2. RHYTHM (Middle & Beginning High School)

Exercise 2 consists of 16 measures of music in 4/4 time, written on a single treble clef staff. The notes are as follows: Measure 1: G4, A4, B4, C5; Measure 2: D5, C5, B4, A4; Measure 3: G4, F4, E4, D4; Measure 4: C4, B3, A3, G3; Measure 5: F3, E3, D3, C3; Measure 6: B2, A2, G2, F2; Measure 7: E2, D2, C2, B1; Measure 8: A1, G1, F1, E1; Measure 9: D1, C1, B0, A0; Measure 10: G0, F0, E0, D0; Measure 11: C0, B0, A0, G0; Measure 12: F0, E0, D0, C0; Measure 13: B0, A0, G0, F0; Measure 14: E0, D0, C0, B0; Measure 15: A0, G0, F0, E0; Measure 16: D0, C0, B0, A0.

3. RHYTHM (High School)

Exercise 3 consists of 16 measures of music in 4/4 time, written on a single treble clef staff. The notes are as follows: Measure 1: G4, A4, B4, C5; Measure 2: D5, C5, B4, A4; Measure 3: G4, F4, E4, D4; Measure 4: C4, B3, A3, G3; Measure 5: F3, E3, D3, C3; Measure 6: B2, A2, G2, F2; Measure 7: E2, D2, C2, B1; Measure 8: A1, G1, F1, E1; Measure 9: D1, C1, B0, A0; Measure 10: G0, F0, E0, D0; Measure 11: C0, B0, A0, G0; Measure 12: F0, E0, D0, C0; Measure 13: B0, A0, G0, F0; Measure 14: E0, D0, C0, B0; Measure 15: A0, G0, F0, E0; Measure 16: D0, C0, B0, A0.

4. RHYTHM (*High School*)

Exercise 4 is a 16-measure rhythmic exercise in 3/4 time. The notation is as follows:
Measure 1: Quarter note, quarter note.
Measure 2: Quarter note, quarter note.
Measure 3: Quarter note, eighth note, eighth note (beamed), quarter note.
Measure 4: Quarter note, quarter note, quarter note.
Measure 5: Quarter note, quarter note, quarter note.
Measure 6: Quarter note, quarter note, quarter note.
Measure 7: Quarter note, quarter note, quarter note.
Measure 8: Quarter note, quarter note, quarter note.
Measure 9: Quarter note, quarter note, quarter note.
Measure 10: Quarter note, quarter note, quarter note.
Measure 11: Quarter note, quarter note, quarter note.
Measure 12: Quarter note, quarter note, quarter note.
Measure 13: Quarter note, quarter note, quarter note.
Measure 14: Quarter note, quarter note, quarter note.
Measure 15: Quarter note, quarter note, quarter note.
Measure 16: Quarter note, quarter note, quarter note.

5. RHYTHM (*High School*)

Exercise 5 is a 16-measure rhythmic exercise in 4/4 time. The notation is as follows:
Measure 1: Quarter note, quarter note, quarter note, quarter note.
Measure 2: Quarter note, quarter note, quarter note, quarter note.
Measure 3: Quarter note, quarter note, quarter note, quarter note.
Measure 4: Quarter note, quarter note, quarter note, quarter note.
Measure 5: Quarter note, quarter note, quarter note, quarter note.
Measure 6: Quarter note, quarter note, quarter note, quarter note.
Measure 7: Quarter note, quarter note, quarter note, quarter note.
Measure 8: Quarter note, quarter note, quarter note, quarter note.
Measure 9: Quarter note, quarter note, quarter note, quarter note.
Measure 10: Quarter note, quarter note, quarter note, quarter note.
Measure 11: Quarter note, quarter note, quarter note, quarter note.
Measure 12: Quarter note, quarter note, quarter note, quarter note.
Measure 13: Quarter note, quarter note, quarter note, quarter note.
Measure 14: Quarter note, quarter note, quarter note, quarter note.
Measure 15: Quarter note, quarter note, quarter note, quarter note.
Measure 16: Quarter note, quarter note, quarter note, quarter note.

6. RHYTHM (*High School*)

Exercise 6 is a 16-measure rhythmic exercise in 3/4 time. The notation is as follows:
Measure 1: Quarter note, quarter note, quarter note.
Measure 2: Quarter note, quarter note, quarter note.
Measure 3: Quarter note, quarter note, quarter note.
Measure 4: Quarter note, quarter note, quarter note.
Measure 5: Quarter note, quarter note, quarter note.
Measure 6: Quarter note, quarter note, quarter note.
Measure 7: Quarter note, quarter note, quarter note.
Measure 8: Quarter note, quarter note, quarter note.
Measure 9: Quarter note, quarter note, quarter note.
Measure 10: Quarter note, quarter note, quarter note.
Measure 11: Quarter note, quarter note, quarter note.
Measure 12: Quarter note, quarter note, quarter note.
Measure 13: Quarter note, quarter note, quarter note.
Measure 14: Quarter note, quarter note, quarter note.
Measure 15: Quarter note, quarter note, quarter note.
Measure 16: Quarter note, quarter note, quarter note.

7. RHYTHM (High School)

8. UNISON (Middle School)

Have you heard these songs be - fore? Mel - o - dies that we a - dore.

If you think this tune is bliss, There are twen - ty af - ter this.

9. UNISON (Middle School)

Mus - ic fills my heart with joy, My pi - a - no is my toy. I play tunes all day and night; I

ev - en read them all by sight! If I need to buy some scores, I go to the

mus - ic store. When I go I must in - sist to bring a - long my Chop - in Liszt.

Where did you come from ba - by dear? Out of the ev - 'ry - where in - to here.

Where did you come from ba - by dear? Out of the ev - 'ry - where in - to here.

Where did you come from ba - by dear? Out of the ev - 'ry - where in - to here.

Where did you get those eyes so blue? Out of the sky as I came through.

Where did you get those eyes so blue? Out of the sky as I came through.

Where did you get those eyes so blue? Out of the sky as I came through.




Alabama Vocal Association

Lord Byron

Middle School 3-Part-1 District 2010

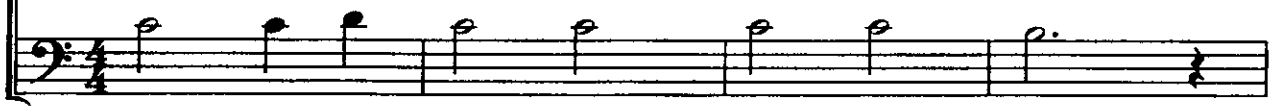
Mark Malone

Soprano



She walks in beau - ty - like the night.

Baritone



She walks in beau - ty - like the night.

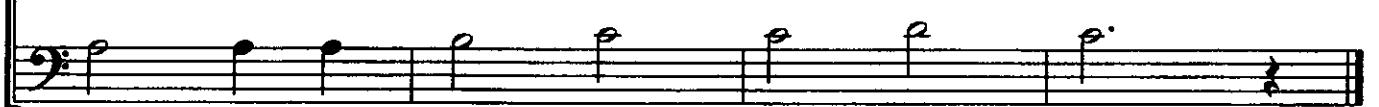
5

S



Of cloud - less climes and star - ry skies.

B



Of cloud - less climes and star - ry skies.

Mississippi

Lyrics by: Isaac Watts

SA State

Music by: Mark Malone

Soprano

Alto

Joy to the world, the Lord, the Lord is come! Let

5

S

A

ev - e - ry heart pre - pare Him room.

9

S

A

And, heav'n and na - ture - sing, A - men!

13

S

A

And, heav'n and na - ture - sing, A - men!

Alabama Vocal Association

Lyrics by: Bessie Porter Head TTBB State Choral Festival Music by: Mark Malone

Tenor

8

O Breath of life come sweep - ing through us.

Bass

5

T Re - vive your church with life and power

B

9

T O breath of life come cleanse re - new us.

B

13

T and fit your church to meet - this hour.

B

Mississippi

Lyrics by: Henry van Dyke

SATB State Piano Part

Music by: Mark Malone

Soprano

Bass

O joy - ful, joy - ful we a - dore Thee, ev - ery -

5

S

B

one. Our hearts un-fold like flowers be-fore Thee, op'-ning to the

9

S

B

sun. O gi - ver of im - mort - al glad - ness, make us

13

S

B

one.