

The Louisiana Musician

"The Official Journal of the Louisiana Music Educators Association"

Volume 84 Number 3 February 2019



Also Included:

District Director Election Information


Constitution and By-Laws Amendment Proposal Information

Hall of Fame Information

Outstanding Administrator Information

Outstanding Young Music Educator Information

Call for 2019 Conference Clinics



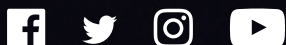
"My YEV is perfect for any and all performance situations — from the concert hall to Coachella. With a masterful blend of sophistication and edginess, it has the best tone quality of any electric violin."

Leah Zeger

Leah Zeger — Violinist, Vocalist, Composer



@YamahaMusicUSA



DeBose

Fine Arts Festival ~ 2019

➤ VISUAL ARTS

Site: East Baton Rouge Parish Main Library



Adjudicated Artwork Awards Ceremony

Thursday, February 7, 2019 ~ 6 PM

Exhibit – February 7 ~ March 7, 2019

➤ PERFORMING ARTS

Time: 9:30am to 1pm



Site: Baton Rouge Community College

Magnolia Performing Arts Pavilion

➤ Elementary Schools:

Thursday, February 14, 2019

➤ Middle Schools

Thursday, February 21, 2019

➤ High Schools

Thursday, February 28, 2019



www.debosefineartsseries-competition.com

The Louisiana Musician

VOLUME 84

NUMBER 3

February 2019

In This Issue

From the President	3
From the Past President	3
From the Editor	4
Elementary Division Chairman	5
Band Division Chairman	5
Vocal Division Chairman	6
President Red Stick Chapter AOSA	7
District I	7
District II	7
District III	8
District IV	8
District V	9
District VI	9
District IX	9
District Director Election Information	12-13
Website Notice	12
Constitution/By-Law Amendment Proposals	14-15
Sample Ballot for Proposed Amendments	16
LMEA Audit 2017-2018	17
Hall of Fame Nominations	17
Call for Conference Proposals	18
Outstanding School Administrator Form	19-20
Outstanding Young Music Educator Form	22-33

Buyer's Guide

Yamaha	Inside Front Cover
DeBose	1
National Guild	10
Lafayette Music	10
Orlando Tours	11
LMEA Awards	Back Cover

Louisiana Music Educators Association Board of Directors

LMEA Website: <http://www.lmeamusic.org>

PRESIDENT

Carol Lupton
3316 Eastwood Drive
Shreveport, LA 71105
rlupton@caddoschools.org

PRESIDENT-ELECT

Scotty Walker
410 Holden Ave.
Lafayette, LA 70506
scitywalk@cox.net

PAST-PRESIDENT

Fran Hebert
P. O. Box 61373
Lafayette, LA 70596
fwhebert@gmail.com

EXECUTIVE DIRECTOR

Bruce Lambert
P.O. Box 12046
Lake Charles, LA 70612
brucelambert@att.net

DISTRICT DIRECTORS

DISTRICT I DIRECTOR

Greg Oden
106 McAlpine Dr.
West Monroe, LA 71291
oden@opsb.net

DISTRICT II DIRECTOR

Jessica Fain
504 Osiris Street
Alexandria, LA 71303
jessica.fain@rpsb.us

DISTRICT III DIRECTOR

Brett Babineaux
304 N. Michot Rd.
Lafayette, LA 70580
bababineaux@lpssonline.com

DISTRICT IV DIRECTOR

Katie Codina
4009 J Street
Metairie, LA 70001
katie.codina@apsb.org

DISTRICT V DIRECTOR

Sharon Stephenson
1214 Laura Street
Sulphur, LA 70663
skstephenson1214@gmail.com

DISTRICT VI DIRECTOR

Guy Wood
3817 Williams Place
Jefferson, LA 70121
gwood68@aol.com

DISTRICT VII DIRECTOR

Jim Trant
4025 Hwy. 308
Raceland, LA 70394
districtseven@bellsouth.net

DISTRICT VIII DIRECTOR

Mark Minton
206 Bobbie St.
Bossier City, LA 71112
mark.minton@bossierschools.org

DISTRICT IX DIRECTOR

Jessica Lizana
210 Whisperwood Blvd.
Slidell, LA 70458
jessica.lizana@stpsb.org

DIVISION CHAIRS

BAND DIVISION

Joseph Nassar
39414 Madison Avenue
Prairieville, LA 70769
joseph.nassar@apsb.org

VOCAL DIVISION

Angela Jones
4025 Hwy. 308
Raceland, LA 70394
ajoneslmea@gmail.com

ORCHESTRA DIVISION

Katrice LaCour
748 Coco Bed Rd.
Cloutierville, LA 71416
klacour@nat.k12.la.us

JAZZ DIVISION

Lee Hicks
69285 3rd Ave.
Covington, LA 70433
Ralph.hicks@stpsb.org

UNIVERSITY DIVISION

Victor Drescher
17471 Blossom Trail Dr.
Prairieville, LA 70769
victor.drescher@selu.edu

ELEMENTARY DIVISION

Michele White
1522 20th St.
Lake Charles, LA 70601
mmwhite406@mac.com

COLLEGIATE MENC

Ed McClellan
868 S. Clearview Parkway #339
River Ridge, LA 70123
emccllell@loyno.edu

PUBLIC RELATIONS

Carolyn Herrington
2208 Blankenship
De Ridder, LA 70634
carolynherrington3@gmail.com

EX-OFFICIO MEMBERS

EDITOR:

The Louisiana Musician
Pat Deaville
P.O. Box 6294
Lake Charles, LA 70606
pdeaville3@gmail.com

LBA PRESIDENT

Angele S. Bienvenu
138 West 98th
Cut Off, LA 70345
abienvenu@mylpsd.com

LAKE

Ava Brown
4511 W. Quail Hollow Drive
Lake Charles, LA 70605
ava.brown@cpsb.org

HALL OF FAME

Thomas Burroughs
26120 Vincent Drive
Denham Springs, LA 70726
Thomas.burroughs@lpsb.org

ACDA

Kevin Caparotta
Brother Martin High School
4401 Elysian Fields Ave.
New Orleans, LA 70122
kcaparotta@brothermartin.com

LAJE

Patrick Bordelon
5835 Landmor Drive
Greenwell Springs, LA 70739
pbordelon2@centralcss.org

AOSA

Red Stick Chapter
Kelly Stomps
166 Sandra Del Mar Drive
Mandeville, LA 70448
kstomps@aol.com

CONFERENCE COORDINATOR

James Hearne
138 Kathy Drive
Ragley, LA 70657
james.hearne@cpsb.org

LSTA PRESIDENT

Michelle Wilkinson-Nelson
36309 E. Pine Grove Ct.
Prairieville, LA 70769
Mwn6861@aol.com

LA PAS

Brett Dietz
B29 Music & Dramatic Arts
Building
Louisiana State University
Baton Rouge, LA 70803-2504
bdietz1@lsu.edu

WEBMASTER

Sharon McNamara-Horne
18449 Hosmer Mill Road
Covington, LA 70435
sharon.mcnamarahorne@gmail.com

From the President
Carol Lupton

Another New Year has arrived. As I get older, the years seem to pass so fast. I can remember when things like Christmas took forever to get here. This year brings my 60th Birthday. I really don't understand how I got to 60 so fast.

With this New Year, comes the opportunity for LMEA members to make their voices heard concerning how your organization functions in the future. For as many years as I can remember, I have been asked about the requirement for LMEA members to be members of the National Association for Music Education (NAfME). After much discussion, your LMEA Board voted to give the membership the chance to vote on an option concerning the mandatory membership in NAfME.

Personally, I feel that being a member of both LMEA and NafME is just a part of my professional responsibility. I also feel that way about my membership in the American Federation of Teachers. I do, however, recognize that these feelings may not be held by all LMEA members.

When LMEA was incorporated in 1959, it was incorporated as an affiliated music educator association of the Music Educators National Conference, what is now NAfME. Our national organization has grown far beyond the scope originally envisioned.

The vote on the amendments that would eliminate the requirement of LMEA members to join NafME will be done electronically. The ballot will be available from March 1st, through midnight March 15th. You will need to use your NAFME membership number as a “log-in” in order to vote.

I will ask you to consider your vote carefully before casting your ballot. While voting “yes” for the package of amendments on your ballot does not necessarily separate LMEA from NAFME, there is the possibility it could lead to a separation at some point in the future. Regardless of how you vote, the most important thing is that you vote. This decision is too important for you not to have had your voice heard.



From the Past President
Fran Hebert

2018 Fall Professional Development Conference

Our fall conference increases in attendance each year. I am glad to report that the majority of registration was accomplished online. Thank you. Also, our policy to require conference registration by all attendees, including presenters was well received. This is a practice maintained throughout the nation.

There are many professional choices for ever increasing attendance at the conference. Our student all-state concerts were dynamic musical presentations, one and all. Everyone who contributed to the success of the groups should be proud of the caliber of music, musicians, and musicianship demonstrated by all. ULL collegiate performances were splendid. Clinicians presented on numerous topics, well-chosen and well-attended. The university tables were busy with interested students looking toward continuing higher education in music. The exhibit hall was at maximum capacity with professional ideas, materials and services from regular vendors as well as booths with new merchants. Luncheons and meetings combined social and business exchange to produce progress all around. And, this is only a general mention of the many faceted aspects of our fall conference: *'The place'* for music education professionals to thrive.

The fall conference is also the place for prospective leaders to place their name on the ballot to serve as a member of the LMEA board. LMEA members can request to place their name on the list of candidates from the time of conference until December 31.

Conferences held on even-numbered years (2018 etc.) are open to accept candidates for district director positions. Conferences held on odd-numbered years (2019 etc.) are open to accept candidates for the President-Elect position on the executive board, and each of the eight Division Chairs – Band, Vocal, Orchestra, Jazz, University, Elementary, Collegiate, and Public Relations.

The 2018 conference received new candidate names for district director positions requiring a ballot for members to vote for their candidates in District 5 and members to vote for their candidates in District 8. The two candidates on the ballot in each of those districts are as follows:

Dist 5 – Sharon Stephenson and Evan McAleer

District 8 – Michele Deslattes and Cheryl Corkran.

The other district incumbents are unopposed and will return for another two year term on the board:

Dist 1 – Greg Oden; Dist 2 – Jessica Fain; Dist 3 – Brett Babineaux; District 4 – Katie Codina;

Dist 6 – Guy Wood; Dist 7 – Jim Trant; Dist 9 – Jessica Lizana.

I cannot write this article without expressing my heartbreak in the untimely loss friends and colleagues around the time of the conference. Lesli Wood and Robbie Giroir will be greatly missed. Their legacy will live on in the lives of those who were touched by their love and dedication to music and musicians, students and colleagues, family and friends. We will always remember . . .



From the Editor's Desk

Pat Deaville

is Former Director of Curriculum and Instruction
Calcasieu Parish Schools



This spring, District Director positions will be on the LMEA ballot. A package of amendments will also be provided for your consideration.

Voting will open on March 1, 2019, and close at midnight on March 15, 2019. Voting will be done electronically through the LMEA Website (lmeamusic.org). A membership login will be required (utilizing your NAFME membership number) when casting a vote.

Only LMEA members of Districts V and VIII will be voting on District Directors. All other Districts had only one candidate. For Districts with only one candidate, the Board of Directors will accept their candidates into office during the May 2019 Board meeting.

The proposed package of amendments, to the LMEA Articles of Incorporation and Bylaws, is a referendum vote in which all LMEA members are asked to participate.

If the package is approved, (1) it would allow you to be a member of LMEA, without requiring you to join NAFME and (2) it would establish that LMEA membership dues are to be paid directly to LMEA, rather than funneled through NAFME.

Even if the package of amendments is approved by two-thirds of the membership, LMEA will remain affiliated with NAFME as an organization and LMEA members may continue to be members of NAFME if they so desire. The key change would be that LMEA members would have freedom of choice as pertains to joining NAFME.

There has been much debate over the years as pertains to the relationship between LMEA and NAFME. LMEA Board members have worked diligently to maintain a positive and productive relationship with NAFME, while also listening to the issues and concerns brought forward by LMEA members.

Why has the Board of Directors decided to give LMEA members an opportunity to make changes in the LMEA Articles of Incorporation and Bylaws?

For many years, Board members have received considerable "grass roots" feedback from LMEA members related to dissatisfaction with NAFME's annual increase in dues and the limited financial/material support provided by NAFME to LMEA.

As the "grass roots" feedback for change has been substantial, and enduring, the LMEA Board feels compelled to give the membership a formal opportunity to change the LMEA Articles of Incorporation and Bylaws.

The Board is aware that not all LMEA members' opinions align with the proposed amendments. But the Board acknowledges that this matter cannot be finally resolved without a vote from the general membership. Two-thirds of LMEA members who vote must approve the package of amendments in order for the changes to be made.

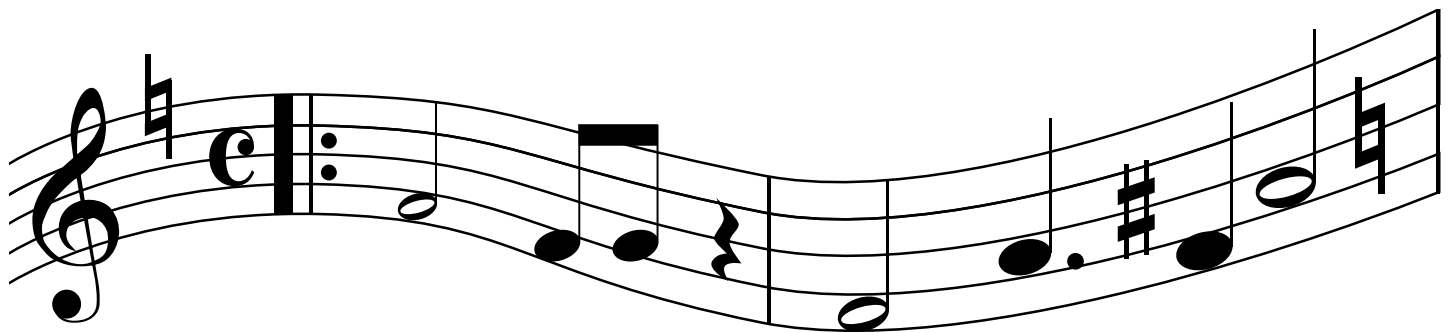
Therefore, at two consecutive regularly scheduled meetings of the Board of Directors of LMEA; Inc., the following was approved by a two-thirds vote:

To provide membership with the opportunity to approve:

1. *Amendments in the Articles of Incorporation and Bylaws necessary to remove the mandate of NAFME membership as an eligibility requirement for membership in LMEA.*
2. *Amendments in the Articles of Incorporation and Bylaws necessary to allow for the independent collection of LMEA annual dues separate and distinct from NAFME dues.*

So now, it is up to you...the membership. The package of amendments to the Articles of Incorporation and Bylaws must be approved by the general membership of LMEA by a two-thirds referendum vote in order for these amendments to take effect. It is vital that your voice be heard. Please vote.

(A "Frequently Asked Questions" document (FAQ) is provided in this issue of the Louisiana Musician. A sample ballot is also provided. Both the FAQ and sample ballot will also be posted on-line at lmeamusic.org. Once again, voting will be done electronically at lmeamusic.org from March 1, 2019, through March 15, 2019.)



Elementary Division Chairman *Michele White*



"My heart, which is so full to overflowing, has often been solaced and refreshed by music when sick and weary." — Martin Luther

How quickly a year goes by – it is hard to believe that 2018 is in the record books. In many ways it was a very good year, and in other ways it was a year in which I learned more than I ever thought I could or would – some helpful, and some not so much.

It was the year when – for the first time in 38 years – I was away from school for nine months. I did not have the opportunity to teach and to be taught by my students. How strange it was to be missing the one thing that has been a constant for nearly four decades. I don't know how much my singers missed me, but I missed them every day.

And so, I understand what Martin Luther was saying in the quote above. I was solaced and refreshed by music when I was in the hospital, in the rehabilitation center/nursing home, and when I returned home in a wheelchair that was my constant companion for four months. In addition, I thought continuously about my students at school and hoped they were enjoying going to music as much as always.

Luckily, I was able to walk by the time of the LMEA Conference in November. I thought the conference was an incredible experience. We had so many wonderful presenters and sessions. I learned so much and was itching to get back to teaching although that day wouldn't come for another month.

Dr Andy Paney and Dr Susan Brumfield were our main clinicians. I am amazed by their sessions anytime I have the chance to see them, and I was glad everyone else loved them as well. Jarrod Richey presented two clinics on folk dancing which were greatly enjoyed by all. Lamar Robertson, Jason Jones, Shannon Crumlish, and our panel of new teachers were well received also.

Not as many elementary teachers filled out evaluation forms this year (perhaps due to the weather or traffic!), but the ones I received all rated fours and fives (on a five-point scale). Nearly all clinics were full with excited, energetic music educators. We are so fortunate in Louisiana to have such a wide variety of experts who are willing to share with us.

As 2019 begins, I hope you try new ideas and review class favorites in your music rooms. I hope you remember why music education is important and how much it enriches and enhances the lives of your students. I hope you adhere to the idea that on January 1 you begin writing a 365-page book – make it a good one! Claim a blessed year.

Band Division Chairman *Joseph Nassar*



As we start every new year, many exciting things begin to happen in the band world. Everyone begins planning for our Spring concert season. Honor Bands across our state are in full swing. And, of course, preparations for upcoming Large Ensemble Assessment are underway. With this in mind, I have been working with the LMEA Board and band directors across the state to put into place some new initiatives to make our assessments more consistent from district to district, and to open up some new opportunities to expand the repertoire for bands at every level.

We have also been working to update the all-state audition process for the past several years. Just this past week, the board approved several changes which I feel will continue to improve the overall quality of the all-state ensembles.

Low Clarinet All-State Auditions

For the past two years, I have been working with clarinet specialists to revise the all-state low clarinet etudes and scales. These revisions will be in effect beginning with the 2019-2020 school year.

Advanced Studies, from the works of Julius Weissenborn, adapted for Alto and Bass Clarinet, by William E. Rhoads (Southern Music Company publication)

Set I

Pg 15 #19 Eb major (qtr = 138)

Pg 7 #11 D minor (andante/tranquillo - qtr = 84/allegro - qtr = 156)

Set II

Pg 5 # 7 A minor/major (dotted qtr = 84)

Pr 18 #24 G major (qtr = 88)

Set III

Pg 2 # 4 B minor (qtr = 116)

Pg 6 #10 Bb major (qtr = 88)

Set IV

Pg 3 # 5 C minor (half = 72)

P 25 #32 C# minor (dotted qtr = 48)

In addition to this music, the WRITTEN "D" and "Db/C#" scales for the low clarinets will be played in only one octave. All other scales will be performed in two octaves.

All-State Etude Scoring

After speaking with the second-round judges every year, the overwhelming consensus has been that the scoring process for all-state etudes has been cumbersome and ineffective for the purposes of a seven-minute audition. With that in mind, the board approved the following changes:

Continued on next page

Prepared Materials Each student auditioning on a wind instrument must prepare all audition etudes in entirety. Judges may elect not to hear an entire etude but must hear the same section for each student who auditions. The student may use his/her own music for the audition. Prepared materials constitute forty percent of the total audition score. *Each etude will be scored independently with a maximum of 20 points each. The following areas will be considered when scoring each individual etude: Tone, Intonation, Technique, Interpretation, and Musical Effect.*

All-State Auditions on Multiple Instruments

In the past, students who auditioned for and made an ensemble on multiple instruments for second-round were placed on the instrument in which their highest chair was earned. We have now amended that policy to allow a student to declare their choice of instrument before auditioning:

Any student who qualifies and auditions for second round all-state on multiple instruments will declare his/her choice of instrument by rank (1st choice, 2nd choice, etc.) upon the conclusion of first-round auditions. This choice will be noted on the district allotment form.

Bass Trombone Auditions

Finally, after much discussion over the past several years regarding the all-state bass trombone auditions, I introduced the following proposal to reinstate the bass trombone auditions and positions in the all-state bands and orchestra as previously allowed beginning with the 2019-2020 school years with the following revisions and provisions:

First-Round Auditions:

1. Students auditioning for "Bass Trombone" must audition on an actual bass trombone as defined by its bore size, configuration of rotor(s)/tubing, and ability to play the full range of all excepts in the four-year audition cycle (low G).
2. District first-round allotments will revert to previous quota of four tenor trombones and one bass trombone.
3. In the event a district produces no bass trombone auditions, or none qualify per the above rule, no bass trombone will advance to the second-round from that district.

Second-Round Auditions:

1. Students auditioning for "Bass Trombone" must audition on an actual bass trombone as defined by its bore size, configuration of rotor(s)/tubing, and ability to play the full range of all excepts in the four-year audition cycle (low G).
2. Student's score must rank within the range of the tenor trombone scores in the particular ensemble or be next in line in order to be placed in that ensemble.
3. In the event that there is no bass trombone audition score ranking within the range specified, an additional tenor trombone will be placed in the ensemble.
4. Instrumentation will return to previous allotments as follows unless altered by music requirements:
 - a. Symphonic Band: 6 Tenor Trombones, 1 Bass Trombone
 - b. Concert Band: 8 Tenor Trombones, 1 Bass Trombone
 - c. Orchestra: 2 Tenor Trombones, 1 Bass Trombone

It is my pleasure to serve as your band division chair. Please contact me any time if you have any questions or concerns or need help with anything. My email address is joseph.nassar@apsb.org.

Vocal Division Chairman Angela Jones



Thank you for taking care of the enormous tasks and responsibilities necessary to get our students successfully from their classrooms to the Crowne Plaza for the LMEA All-State Choir Event. Everything from planning and executing first and second round auditions to all-state registrations, t-shirts, part checks, and so on needed people to get it done. All of your efforts are greatly appreciated by those who were the recipients of your kindness and dedication. The event was a success because of you!

On December 23, 2018, our dear friend and colleague, Robbie Giroir, departed the physical world. Jim Simon, a dear friend, compiled sentiments expressed by those who love him in a special tribute:



Robbie was the Director of Choral Studies at Baton Rouge Magnet High School. He was known as "Mr. Giroir" to a countless number of students that had the privilege of working with him over the last 35 years. A fiercely devoted educator, he empowered his students through his unique, yet practical way of instruction. Many will remember his colorful sayings, powerful mantras, and unique methodologies all selflessly undertaken to advance his students. Former students have gone on to pursue advanced degrees in every academic discipline. Some now hold prestigious positions as college professors, professional musicians and educators, and Broadway actors. He inspired young people to follow their passion. His choirs performed to the highest degree, and he was always happy to share in his students' successes.

*The current students and alumni of BRMHS Choral Studies honor Mr. Giroir with a tribute. A choral director who taught with **excellence** and **professionalism**.*

Another dear friend, Dana Lux, shared the following:

Robbie's dedication of his life to his students, their artistic development and to sharing his immense love for music will be his enduring legacy at BRMHS and also with our choral community! Always in our hearts!

Although our hearts mourn, we also joy in having known Robbie Giroir and will continually be blessed by lessons he taught us through the life he lived on this earth.



President Red Stick Chapter AOSA *Kelly Stomps*



There's something about the ukulele that just makes you smile. It makes you let your guard down. It brings out the child in all of us. – Jake Shimabukuro

Red Stick is excited to announce that two-time Grammy nominated musician, Jane Vidrine, will be sharing techniques for incorporating the ukulele at our workshop on February 2, 2019. Don't worry if you have no experience with the ukulele! Vidrine's workshop is specifically designed for those with little to no playing experience, and instruments will be available for all attendees to use. While building our own ukulele skills, Jane will be sharing ideas and songs that will work in a variety of educational settings. We hope you can join us for a day of learning, sharing, playing, and bringing out the child in us all. The workshop will be hosted at LSU, and you can find out more information at www.redstickorff.com.

District I *Greg A. Oden*



Once again, I would like to thank the membership from District 1 for allowing me to serve as your district director. It has always been my desire to assist your programs in achieving the highest level of musical expression possible. Let us continue to endeavor to provide the best music education to the students of District 1 and Louisiana.

Please make sure to honor all deadlines. The deadline for events, unless otherwise noted, will be **30 days prior to the event**. If you miss a deadline, a late fee may be assessed. Some important dates to remember:

District 1 Vocal Assessment – March 18-19, 2019 at LA Tech University

District 1 Instrumental Assessment – March 21-22, 2019 at West Ouachita High School

May your spring semester be one of new musical challenges, goals, and experiences. I wish you much success and great music.
Greg A. Oden, District 1 Director

District II *Jessica Fain*



HAPPY NEW YEAR! I hope that you have come back from the break fully recharged and ready to inspire and motivate the young people in your classroom. I always get very excited coming into the spring semester--this is the time where we continue to build on the foundation that we have set for our ensembles. We have the opportunity to share our love and passion for music with each child that we come into contact with. What a beautiful thing!

As we prepare to embark on this new year, I challenge you to take a personal day and observe a master teacher in his or her classroom. I believe that it is very important that we set aside time to see what other directors are doing so that we can continue to grow ourselves. There are numerous outstanding music programs in Louisiana; why not spend some time watching those directors do what they do best and share with them what works for you? For the veteran teachers out there, contact the new teacher in your area and see how they are doing. We all remember what it felt like to prepare for our first assessment. It is important that we remember to support and build up those that are around us so that we continue to showcase the amazing talent that we have, right here in Louisiana.

Large Ensemble Assessments for District II will be held as follows:

Choir: March 21, 2019 at Northwestern State University

Band/Orchestra: March 22, 2019 at Northwestern State University

Choral entry forms are due by February 21, 2019. Allison Gill will be chairing the Vocal Assessment, so please get in touch with her if you have any questions (Allison.gill@rpsb.us). Instrumental/Orchestra entry forms are due on February 22, 2019. All forms and checks should be mailed to 1150 Tioga Rd., Pineville, LA 71360 to the attention of Jessica Fain. Please ensure that you get your forms and checks submitted on time.

Please take the time to read the performance requirements listed on the LMEA website. One of the most common mistakes that I have discovered is directors indicating the wrong classification and/or requirements for their groups. You are responsible for reading the handbook and observing the rules. If you have a question about the classification and/or the requirements for your group, please do not hesitate to contact me at Jessica.fain@rpsb.us. If you are a new director to District II, contact me so that I can help you. We are all in this together and I want to make sure you have everything you need to be successful.

Happy music making and don't forget to have fun!

Good luck!

Jessica Fain
Jessica.fain@rpsb.us
LMEA District II Director
Tioga Junior High School



District III Brett Babineaux



"Engaging STUDENTS in the decision-making process, defining the musical reasons for making the adjustments, and EMPOWERING THE STUDENTS to use this acquired knowledge in future musical settings IS MUSIC EDUCATION of the highest order."

Richard Floyd in The Artistry of Teaching and Making Music

I was on a mission...a mission to have the best attitude possible at LMEA Conference. My mission brought me into clinics that I would not normally venture into. I snuck into a choir rehearsal; I walked into a guitar clinic, and in plain sight, hid in elementary division clinics. In each of those clinics, I grabbed at least one nugget of new information that could benefit my band program. Needless to say, I left very motivated and already looking forward to next year's conference.

Congratulations again to Ms. Robin Daigle, longtime educator in District 3, for her induction into the LMEA Hall of Fame.

District 3 High School Honor Band clinicians this year were Dale Warren, Craig Millet, and Carolyn Herrington. The clinicians for Middle School Honor Band were Erin Cole, Jessica Fain, and Leola Woods.

District Choir clinicians for this school year: Dr. Meg Frazier, Jarrod Richey, and Reese Norris

Please mark your calendars with the following upcoming events:

March 25 (District III High School Choral Large Ensemble Assessment @ UL-Lafayette)

March 26 (District III Elem/Middle Choral Large Ensemble Assessment @ Asbury United)

March 21-22 (District III High School Instrumental Large Ensemble Assessment @ UL-Lafayette)

March 26-27 (District III Elem/Middle School Instrumental Large Ensemble Assessment @ UL-Lafayette)

April 6 (Louisiana Concert Band Invitational – an affiliate of the Music For All National Festival)

Evaluation Panel will be: Gary Green, Lowell Graham, Dennis Llinas, Cynthia Johnston, Dennis Zeisler, and John Carnahan

Special Guest Performance by the Acadian Wind Symphony.

*For more information about participation and attendance, visit

<https://musicforlouisiana.org/>

Reminder: District Assessment entry forms (along with a photocopy of your current NAFME membership card) and entry fees are due 30 DAYS PRIOR to the scheduled date. Entries will not be processed until all paperwork is complete and accurate.

On behalf of the band, choir, and orchestra directors of District III, many thanks to the faculty and staff of the University of Louisiana, Asbury United Methodist Church, and Will Green and Lafayette Music Co. for all their assistance and hospitality in hosting the honor choirs/bands and large ensemble festivals.

Please contact me if I can be of any assistance to you.

Brett Babineaux, District III

bababineaux@lpssonline.com

District IV Katie Codina



"If you PLAY something, SAY something." This was the title of a fantastic clinic I attended over winter break given by composer Brian Balmages. He spoke about how we often get so caught up perfecting notes and rhythms in our rehearsals that we forget about what our music is actually trying to say. Do students know why the piece was written? Do they know why the composer made the musical choices he or she made? Why is that ritardando there? Is it just to "slow down", or is it to create *tension* or *suspense*? Do they know why you picked the piece and what it says to you?

"Students get REALLY GOOD at what they practice... so if they practice without musicality, they will always play without musicality!" I know I have been guilty of rehearsing for months and then being disappointed why a certain phrasing choice introduced a week before the concert didn't go the way I wanted. So now that preparations for festival season are upon us, let's commit to not only perfect all the details in our music but to truly "SAY something" this March!

Large Ensemble Assessments for District IV will be held as follows:

High School Band – March 26-27, 2019 at Zachary High School

Middle School Band – March 28-29, 2019 at Zachary High School

Multi District Orchestra - March 19, 2019 at Baton Rouge High, Chris Frazier chairperson

Choir - March 13-15, 2019, Dana Lux chairperson

Entry forms are due on February 22nd for Band and Orchestra and February 1st for Choir. Details are all at <http://www.districtiv.org/festival.html>.

Remember that there is no longer Regional Assessments for all divisions and that Band Assessment will now include three judges in sight-reading. If you have not been receiving e-mails from the District, please e-mail me at katie.codina@apsb.org so I can make sure you are on the appropriate list! Good luck to everyone as they prepare for this semester!



District U

Sharon Stephenson



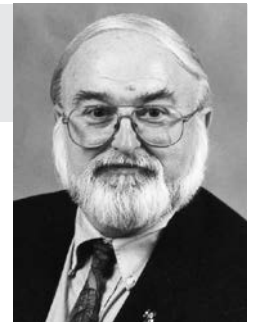
I hope everyone had great holidays and is back into the second half of the school year. Honor Bands, Jazz Band, and Honor Choruses are on the calendar for late January and February. Many hours are put in to make these events successful adventures for our students. A big thank you to all teachers and chairpersons for their efforts.

Solo and Ensemble Assessments begin in February. Band and Orchestra Groups have various dates—send forms and information to Bruce Lambert. Vocal Solo and Ensemble will be held on Saturday, February 23 at Sulphur High School. Send all forms and fees to Anna Lou Babin. The entry deadline is January 18 for this event. Large Ensemble Assessments will be in March. Instrumental will be held at the Lake Charles Civic Center March 12-14. Vocal assessment will be March 20-21 at McNeese. Check calendars for entry dates. There will be a late fee assessed for late entries. Please make checks for assessments to LMEA and be sure to include recording fees.

Spring is always a busy time. Take time to evaluate everything you do. Make the music experience one to remember for yourself and your students. You are a great group of people to work with! If there is anything I can assist you with this, feel free to contact me.

District VI

Guy C. Wood



Greetings from the Big Easy! By the time you read this, the Saints will either still be in the playoffs or in a "wait 'til next year mode." They're a real source of pride for our city. Several of our booster clubs work the concessions in the Superdome as a fund-raiser and some high school bands have actually done the halftime shows. Some of our choirs have also sung the National Anthem at the games, so the Saints are definitely involved with our music programs.

The bands in our area will be starting to prepare for the annual Mardi Gras season in the form of rehearsing and conditioning for the five-to-seven mile parades that contribute to our fund-raising for the year. Mardi Gras is March 5 this year, and we hope we'll be celebrating another "Lombardi Gras" at the same time!

Our Vocal Division - not having to contend with parades - was busy with real music education in the form of their Honor Choirs! The District VI Sr. High Honor Choir, chaired by Kathryn Matherne, was directed by Jaclyn Johnson from Knoxville, Tennessee. The District VI Treble Youth Honor Choir, chaired by Melissa Brocato and Mary Lou Fuenzalida, was conducted by Brandon Williams from Rutgers University in New Jersey. The Honor Concert was on January 26, 2019, in Roussel Hall on the campus of Loyola University in New Orleans.

Rounding out the vocal year are the Solo & Ensemble Assessment which will be chaired by Meredith Hotard & Mary Lou Fuenzalida, and the Vocal Large Ensemble Assessment which will be chaired by Kevin Caparotta. Thanks again go to District VI Vocal Division President Kathryn Matherne for all of her hard work.

On the instrumental side, the Elementary Honor Band was chaired by Kendall Griffin and directed by Kate Davis. The Junior High/Middle School Honor Band was co-chaired by Kim Kessler and Kate Davis and directed by Dominick Caronna. The Senior High Honor Band was chaired by Duncan Pray and directed by David Holsinger. All of the groups performed on January 20 at Tulane University. Thanks go to Tulane Band Director Barry Spanier for all his help.

Rounding out the year, the All-Star Middle School Jazz Ensemble is being chaired by Nick Compagno and directed by Jason Mingledorff. The Senior High Honor Jazz Ensemble is being chaired by Mike Genevay and directed by Andy Pizzo. Finally, the Instrumental Solo & Ensemble Assessment is being chaired by Duncan Pray and the Large Ensemble Assessment is being chaired by Randy Weaver and will be held at Chalmette High School.

It has been a very busy - and very rewarding - year for our District VI members! Have a great summer!

District IX

Jessica Lizana



Happy New Year and welcome to 2019! And just like that, half of the school year is over. For many of us a new year is a chance to start over or make changes to better ourselves. Regarding a new year in music education now is a great time to refocus attention on best educational practices, fostering a lifelong love of music within our students, and becoming more involved within our district and state.

A great way to refocus and get involved is by visiting our district and state websites. Much of the information you will need for assessments, honor ensembles, membership information, and more can be found on those websites. I would suggest familiarizing yourself with these sites and bookmarking them in your browser of choice. I would also mark all upcoming events/dates in your calendar. This will not only help you plan for assessments but will also give your students experiences in creating, performing, and responding.

As many of you know, the new year has also moved us away from District and Regional Assessments. Instead, we will have one District Large Ensemble Performance Assessment. This year's assessment will be hosted at Fontainebleau High School on March 26, 2019 (Choral) and March 27-28, 2019 (Instrumental). Entry forms can be found under the "Forms" tab on www.lmeadistrict9.org. Deadline for registration is February 26, 2019. Remember you must fill out the digital registration form and send a hard copy to me by this date. Along with the changes to Large Ensemble Assessment, we may see more changes for LMEA yet this year.

At the next vocal and instrumental division meetings, I will present information on the referendum pertaining to the requirement of NAFME membership for LMEA members. I urge you to check our District calendars and attend these meetings. It is vital that you, the members of LMEA, are there to hear the information before the vote is taken, but more importantly to voice your opinions, concerns, and desires for our District. You are the backbone of this wonderful organization and I want to ensure I represent you with the best of my ability.

As always, I am so impressed by the members of District IX. Your hard work, musicianship, comradery and dedication to your students inspires me each day. Please do not hesitate to call or email me if I can be of service to you or your programs.

~~~~~  
 "Growing through Giving" ~~~~~

## The Biggest Piano Event in the World

All Spring –  
– Enroll Early

**Guild Auditions provide  
milestones from year to year  
as measurements of progress**

Sponsored by  
the Largest  
Organization of  
Piano Teachers  
in the World



Audition participation  
and absence from school  
APPROVED BY  
TEXAS EDUCATION  
AGENCY

### National Guild of Piano Teachers

Teachers Division of  
American College of Musicians  
Founded in 1929 by Irl Allison  
International Headquarters  
P.O. Box 1807  
Austin, Texas 78767 U.S.A.

I am interested in joining the Piano Guild. Please send  
me more information about membership and  
Guild Goals.

MR.  
MRS.  
MISS

(PRINT OR TYPE NAME AND ADDRESS)

ADDRESS \_\_\_\_\_

CITY \_\_\_\_\_

STATE \_\_\_\_\_

ZIP \_\_\_\_\_



## LAFAYETTE MUSIC COMPANY

**BAND INSTRUMENTS • INSTRUMENT REPAIRS  
UNIFORMS • BAND ROOM FURNITURE  
SOUND SYSTEMS • GUITARS • AMPS • DRUMS  
KEYBOARDS • PIANOS • ORGANS**

**WILL GREEN - BAND DEPARTMENT MANAGER  
3700 JOHNSTON ST • LAFAYETTE, LA 70503  
WWW.LAFMUSIC.COM • 337.984.3700**

*Stanbury*  
UNIFORMS

*You play... We listen!*





Specializing in Bands, Choirs and Educational groups.

JUST ORLANDO YOUTH TOURS HAS ONE PURPOSE - TO MAKE IT EASIER FOR YOU TO TRAVEL WITH YOUR GROUP TO ORLANDO.

PERFORMANCE OPPORTUNITIES AVAILABLE AT

WALT DISNEY WORLD®, UNIVERSAL STUDIOS® OR SEAWORLD®

LET US MAKE ALL THE ARRANGEMENTS FOR YOUR TRIP BECAUSE IT'S WHAT WE DO BEST.



## ***District Director Election Information***

As of 12/31/18, the Past-President reported receiving these nominations for the 2019 District Director Elections.

In two districts, V and VIII, there were multiple candidates. Therefore, there will be an election held in the spring of 2019 for these districts. In all other districts, there was only one candidate. The unopposed candidates will be accepted into their positions for 2019 by the LMEA Board of Directors during the May 2019 Board meeting. The full slate of officers will begin serving their terms during the May 2019 Board of Directors meeting.

### DISTRICT DIRECTORS

|               |                                     |
|---------------|-------------------------------------|
| District I    | Greg Oden                           |
| District II   | Jessica Fain                        |
| District III  | Brett Babineaux                     |
| District IV   | Katie Codina                        |
| District V    | Sharon Stephenson<br>Evan McAleer   |
| District VI   | Guy Wood                            |
| District VII  | Jim Trant                           |
| District VIII | Michele Deslattes<br>Cheryl Corkran |
| District IX   | Jessica Lizana                      |

### **WEBSITE NOTICE**

The LOUISIANA MUSICIAN is published for mailing only two (2) times during the school year. Issues in September and November are mailed to current LMEA members. These issues will also be available on-line at [lmeamusic.org](http://lmeamusic.org).

The February issue of the LOUISIANA MUSICIAN is available on-line at [lmeamusic.org](http://lmeamusic.org).

The informational items normally found in the May issue will be available on the LMEA website in May but not organized in a magazine format.

It is the intention of the LMEA Board that our website will continually expanded in function.

Please visit our website at [www.lmeamusic.org](http://www.lmeamusic.org) and assist us in this transition from print to electronic communication.





## Candidate Bios

### Dist VIII

#### Cheryl Corkran

Cheryl Corkran is a 35-year teaching veteran who has spent the past 25 years as Director of Bands at Greenacres Middle School. During her tenure at Greenacres, the bands have consistently earned awards and honors for their superior performances. Her first 10 years of experience were in New Mexico, Texas and Colorado.

Ms. Corkran is an active member in numerous professional organizations. She is a member of the District 8 Band Directors Association, having held multiple offices in that organization, currently serves as Executive Secretary for the Louisiana Bandmasters Association (25-year member), and in 2017 earned her 25-year pin in the Louisiana Music Educators Association.

Ms. Corkran is a professional clarinet and bass clarinetist in the northwest Louisiana area, and also serves as Adjunct Clarinet Instructor at Bossier Parish Community College. When not actively teaching, Ms. Corkran enjoys jewelry making and woodworking, along with the antics of her 6 adopted dogs and cats.



#### Michele DesLattes

Michele DesLattes is in her 4th year as Choral Director at Southwood High School in Shreveport, LA where she has expanded and maintained that program into one that serves as a major public relations representative for the school. Previously, she worked at Walnut Hill Elementary/Middle School for 13 years, teaching middle school choirs, piano and music appreciation and serving alongside the PTA and Administration to develop one of the largest attended Grandparent's Day programs in the nation. For the last 10 years, she has served as the Caddo Vocal Chairperson and works as Co-Chair of the District VIII Large Ensemble Festival for the vocal division. She is a graduate of Louisiana Tech University holding a BA in Vocal Music Education. Her experience also includes serving in various churches as pianist, keyboardist, Adult Choir director, Youth Choir director and Worship Leader. Among her strengths are administrative and organizational skills, student recruitment and retention, working with other directors as an advocate for music education growing and expanding opportunities in her district for all students.



### Dist U

#### Evan McAleer

Excited for the opportunity to run for the position of District Director for District V, Evan is currently in his 6th year of teaching and his 2nd year as the Assistant Band Director at DeRidder High School. Since graduating from Louisiana State University in 2012, he has not only served as both a middle and high school band director in Districts IV and V, but he has also served on the instructional staff for various Open and World Class Drum and Bugle Corps including Louisiana's own Louisiana Stars where he currently serves as Visual Caption Head. In addition to teaching, Evan also continues to advance his own musicianship as a member of the Allumer Quartet commissioning and premiering new music for horn quartet as well as participating as both a vocalist and instrumentalist for the local musical theater productions in DeRidder, Louisiana. Evan is very thankful for the opportunity to serve District V in any way possible to ensure the best for all of our students.



#### Sharon Stephenson

Sharon is a retired music educator, having taught music education, chorus, and piano in the public and private schools of Calcasieu Parish for 39 years. A native of Mississippi, she holds a Bachelor of Music Education and a Master of Music Education from Mississippi State University. She completed a +30 certification from McNeese State University. Her choirs consistently received Superior ratings at District and State Assessments. She has conducted Honor choirs and served as an adjudicator in both Louisiana and Mississippi.

Sharon has served as the LMEA District Director for District V for the past 12 years. She coordinates the vocal and instrumental LMEA activities and assessments. She chaired the middle school Honor Chorus in District V for over 20 years. She is also a former board member of Louisiana American Choral Directors Association. She has assisted at many of the State and Regional Assessments throughout Louisiana.

Sharon is also an accomplished pianist, serving at several churches, and accompanying many school choirs. Sharon and her husband Johnny live in Sulphur. They have two grown boys, and four grandchildren. She looks forward to more service to the musicians of LMEA.



# Constitution/By-Law Amendment Proposals

## Frequently Asked Questions (FAQ)

Membership Referendum Vote in the Spring Semester of 2019

Consideration of Proposed Amendments to the LMEA Articles of Incorporation and Bylaws

### When and how will this referendum vote take place?

The referendum vote will be held in conjunction with District Director elections. Voting will open on March 1, 2019, and close at midnight on March 15, 2019. Voting will be done electronically through the LMEA Website ([lmeamusic.org](http://lmeamusic.org)). A membership login will be required (utilizing your NAFME membership number) when casting a vote.

LMEA members will be notified of the vote through the February 2019 issue of *The Louisiana Musician (Magazine)*, the Spring 2019 issue of *The Louisiana Connections (Newsletter)*, the LMEA website ([lmeamusic.org](http://lmeamusic.org)), and the LMEA Facebook page. Additional notification will be provided by District Directors.

### What is this referendum vote about?

The vote provides the LMEA general membership with the opportunity to approve or disapprove a package of amendments to the LMEA Articles of Incorporation and Bylaws that would (1) allow for LMEA membership dues to be paid directly to LMEA and (2) eliminate the requirement of NAFME membership in order to be a member of LMEA.

### Why is the Board of Directors bringing this proposal to the membership?

- For years, Board members have received considerable “grass roots” feedback from LMEA members related to dissatisfaction with the annual increase of NAFME membership fees.
- Many members have expressed concerns indicating that they do not feel the services and functions of NAFME reach the needs and wishes of a sufficient number of LMEA members.
- Likewise, some members point out that LMEA is the main service-provider for music educators in Louisiana yet receives little financial/material support from NAFME.
- As the “grass roots” feedback for change has been substantial, and enduring, the LMEA Board feels compelled to give the membership a formal opportunity to modify the requirement of NAFME membership as an eligibility factor in LMEA membership.
- The Board is aware that not all LMEA members’ opinions align with the proposed amendments. But the Board acknowledges that this matter cannot be finally resolved without a vote from the general membership. Two-thirds of LMEA members who vote must approve the package of amendments in order for the changes to be made.

### What was the process followed by the Board of Directors in bringing this package of amendments to the membership?

At two consecutive regularly scheduled meetings of the Board of Directors of LMEA; Inc., the following was passed by a two-thirds vote: Provide to the general membership the opportunity to vote on the following:

- (1) Any needed amendments in the Articles of Incorporation and Bylaws that would allow for the independent collection of LMEA annual dues separate and distinct from NAFME dues.
- (2) Any needed amendments in the Articles of Incorporation and Bylaws that would mandate NAFME membership as an eligibility requirement for membership in LMEA.

### Why must the general membership vote on the package of amendments?

Any amendments to the Articles of Incorporation and Bylaws must be approved by the general membership of LMEA by a two-thirds referendum vote.

### If the package of amendments is approved, can I be a member of LMEA without being a member of NAFME?

Yes. While LMEA does intend to retain affiliation with NAFME as an organization, LMEA members would no longer be required to join NAFME in order to be in LMEA.

### If the package of amendments is approved, can I maintain my membership in NAFME?

Yes. But your NAFME membership would no longer provide you with automatic membership in LMEA. You would have to join each organization through each organization’s established procedures. LMEA dues would be paid directly to LMEA and NAFME dues would be paid directly to NAFME.

*Continued on next page*



**How are my LMEA dues currently paid?**

NAfME sends to LMEA an annual payment of \$25 for each person from Louisiana that joins or renews membership in NAfME. While NAfME membership fees have increased steadily for many years, the amount of money sent to LMEA has remained the same for many years.

**How would the payment of LMEA membership dues change, if the package of amendments is approved by the membership?**

- Membership dues for LMEA would be paid directly to LMEA.
- The LMEA membership dues for active, retired, and collegiate members would be established by the LMEA Board of Directors on an annual basis.
- NAfME would no longer send any membership funds to LMEA. Overall payment by individuals who wish to join NAfME would be reduced by \$25 (which is the amount that NAfME currently sends to LMEA for each Louisiana member.)

**When would LMEA dues be collected?**

If the packet of amendments is approved, the Board of Directors would establish the necessary processes for notification of members and collection of dues for the 2019-2020 school year. While an annual “July 1<sup>st</sup> to June 30<sup>th</sup>” membership has been discussed, specific guidelines have not yet been established by the Board of Directors. This would be decided at the May 2019 Board meeting. Board members would welcome input from membership prior to the meeting.

**What would the LMEA membership annual dues be and how would the money be spent, if the package of amendments is approved by the membership.**

- Provided the general membership approves the package of amendments, the membership dues would be subject to discussion and vote by the Board of Directors at their next meeting (May 2019). Board members would welcome membership input prior to the Board meeting.
- The Board of Directors has discussed the possibility of establishing annual dues at \$125, with the understanding that registration fees for the annual State Professional Development Conference (pre-registration at \$65/registration at Conference at \$80) would be eliminated. All current services provided by LMEA would be sustained. There would be ongoing discussion as pertains to finalizing what the annual dues would be, should the amendments be approved by the general membership.
- The Board does recognize that some members cannot or will not attend the annual Conference. So, a \$125 annual dues payment would appear high to those members. Once again, discussion would continue. Board members would welcome input from membership prior to the May 2019 Board meeting.
- Should the package of amendments be approved, the Board would consider the possibility of a \$25 reduction in LMEA dues for the 2019-2020 school year, for those members who renewed their NAfME membership between January 1, 2019, and the initiation of the independent collection of LMEA dues for the 2019-2020 school year.
- The Board recognizes that the consideration of additional budgeting proposals would not be prudent at this time. Even if the package of amendments is approved, the Board cannot automatically predict the total number of LMEA members for the 2019-2020 school year.
- Therefore, the Board would not be able to predict LMEA’s membership-dues income for the 2019-2020 school year with any high level of accuracy. The Board would only be able to validate income from dues after a full year of independently collecting those dues. It follows that the Board would have to approach the initial budgeting process in a very conservative manner.
- Likewise, the fiscal impact from the recent elimination of Regional/State Assessments and the changes in fee structure for the District Assessments is unknown at this time. Once known, the final income for the 2018-2019 school year may influence the setting of dues and budgeting for the 2019-2020 school year.
- If the membership approves the package of amendments, it will take a minimum of one fiscal year to establish a predictable annual income. Board members will accept input from membership as pertains to budgeting items once an annual income has been established.



## *Sample Ballot for Proposed Amendments*

Approval of the following package of amendments to the LMEA Articles of Incorporation/Bylaws would (1) allow for LMEA membership dues to be paid directly to LMEA and (2) eliminate the requirement of NAFME membership to be a member of LMEA.

\_\_\_\_ I approve the package of amendments.

\_\_\_\_ I do not approve of the package of amendments.

### Articles of Incorporation, Article XI, Funds

**Section 3.** (Current wording) Dues are to be paid to the National Association for Music Education, 1806 Robert Fulton Drive, Reston, Virginia 20191-4348. The Treasurer of NAFME will in turn forward appropriate dues received to the Executive Director of the LMEA, Inc.

Proposed amendment: Dues are to be paid to LMEA, Inc. The Executive Director of LMEA, Inc. shall be responsible for the collection of dues.

### Bylaws, Article IV, Dues

**Section 1.** (Current wording) Active Membership dues will be set by the National Association for Music Education annually. Of this amount, a portion designated by the LMEA Board of Directors shall be allocated to the treasury of the LMEA, Inc.

Proposed amendment: Active Membership dues will be set annually by the Board of Directors of LMEA, Inc.

**Section 2.** (Current wording) The annual fee for Retired Membership shall be set by the National Association for Music Education annually.

Proposed amendment: Retired Membership dues will be set annually by the Board of Directors of LMEA, Inc.

**Section 3.** (Current wording) The annual dues for Collegiate Membership shall be set by the National Association for Music Education annually. NAFME will reimburse LMEA a designated amount per collegiate member.

Proposed amendment: Collegiate Membership dues will be set annually by the Board of Directors of LMEA, Inc.

### Bylaws, Article V, Affiliation

**Section 1.** (Current wording) This Corporation shall function as a state unit of the National Association for Music Education in accordance with the Constitution and Bylaws of that organization. Furthermore, each member of the Louisiana Music Educators Association, Inc., shall be, by virtue of this membership, a member of the National Association for Music Education.

Proposed amendment: The Louisiana Music Educators Association, Inc. shall function as a state unit of the National Association for Music Education in accordance with the Constitution and Bylaws of the National Association for Music Education.

## ***LMEA Audit 2017-18 School Year***

| Catagories             | 17-18 Expenses       | 17-18 Income         | 17-18 Net            | 18-19 Expenses       | 18-19 Income         |
|------------------------|----------------------|----------------------|----------------------|----------------------|----------------------|
| All State              | \$ 9,889.81          | \$ 3,959.67          | \$ (5,930.14)        | \$ 13,000.00         |                      |
| All State Band         | \$ 16,458.05         | \$ 16,215.00         | \$ (243.05)          | \$ 18,000.00         |                      |
| All State Choir        | \$ 14,804.41         | \$ 19,930.00         | \$ 5,125.59          | \$ 16,000.00         |                      |
| All State Jazz         | \$ 3,575.00          | \$ 2,835.00          | \$ (740.00)          | \$ 4,000.00          |                      |
| All State Orchestra    | \$ 4,240.92          | \$ 7,995.00          | \$ 3,754.08          | \$ 5,000.00          |                      |
| Board Meetings         | \$ 12,591.42         | \$ -                 | \$ (12,591.42)       | \$ 14,000.00         |                      |
| Conference             | \$ 30,927.90         | \$ 35,945.50         | \$ 5,017.60          | \$ 32,000.00         |                      |
| District Assessments   | \$ 8,609.38          | \$ 36,237.85         | \$ 27,628.47         | \$ 15,000.00         |                      |
| Hall of Fame           | \$ 391.24            | \$ -                 | \$ (391.24)          | \$ 500.00            |                      |
| Magazine               | \$ 12,824.38         | \$ 2,990.00          | \$ (9,834.38)        | \$ 13,000.00         |                      |
| Medals                 | \$ 4,590.98          | \$ 4,028.25          | \$ (562.73)          | \$ 5,000.00          |                      |
| Membership             | \$ -                 | \$ 15,817.00         | \$ 15,817.00         | \$ -                 |                      |
| NAfME Conference       | \$ 1,069.99          | \$ 637.70            | \$ (432.29)          | \$ 2,000.00          |                      |
| Office                 | \$ 2,976.04          | \$ -                 | \$ (2,976.04)        | \$ 3,500.00          |                      |
| Salary                 | \$ 23,635.44         | \$ -                 | \$ (23,635.44)       | \$ 29,000.00         |                      |
| State Band Assessment  | \$ 28,656.48         | \$ 30,450.00         | \$ 11,793.52         | \$ -                 |                      |
| State Choir Assessment | \$ 13,697.09         | \$ 28,115.00         | \$ 14,417.91         | \$ -                 |                      |
| State Orch. Assessment | \$ -                 | \$ -                 | \$ -                 | \$ -                 |                      |
| State Assessment       | \$ 14,551.61         | \$ -                 | \$ (14,551.61)       | \$ -                 |                      |
| <b>TOTAL</b>           | <b>\$ 193,490.14</b> | <b>\$ 205,155.97</b> | <b>\$ 11,665.83</b>  | <b>\$ 170,000.00</b> | <b>\$ 170,000.00</b> |
| <b>FOUNDATION</b>      |                      | <b>\$ 3,554.67</b>   | <b>\$ 180,554.67</b> |                      | <b>\$ 2,000.00</b>   |

## ***Hall of Fame Nominations Sought***



The Hall of Fame for Music Educators in Louisiana was instituted in 1982 and is sponsored by the LMEA, the purpose being to honor music educators who, by virtue of their contributions, are recognized as being the most highly regarded professional leaders in music education in Louisiana. A nominee, living or deceased, active or retired, should be or should have been:

1. A professional music educator who has made a longstanding, significant contribution to the school music program in Louisiana.
2. A person who has demonstrated a concern for music education by active involvement in local, district, state, regional or national professional organizations.
3. An active music educator or administrator in music education in a Louisiana school or institution of higher learning for a period of not less than twenty years.
4. An active member of the Louisiana Music Educators Association.

Persons wishing to submit names of candidates for induction into the LMEA Hall of Fame should send a letter of nomination, along with a biographical sketch, to the chairman of the LMEA Hall of Fame Committee, to be received no later than May 1st. The biographical sketch should include the achievements of the candidate in the criteria listed above. Nominees will not be considered without the biographical sketch. Inductees are selected by the Hall of Fame Committee by secret ballot. The current chairman of the LMEA Hall of Fame Committee is Thomas Burroughs, 26120 Vincent Drive, Denham Springs, Louisiana 70726.





**Session Proposal for LMEA Professional Development Conference Clinic Session**

LMEA State Conference/Nov. 21-25, 2019/Crowne Plaza Hotel/Baton Rouge, LA

*(On-line proposal form is available at <http://www.lmeamusic.org/proposal-for-state-professional-development-clinic-session/>)*

Name \_\_\_\_\_ NAFME Member \_\_Yes\_\_ No

Title \_\_\_\_\_

School, Company or Organization \_\_\_\_\_

Address \_\_\_\_\_

City -State \_\_\_\_\_ Zip Code \_\_\_\_\_

Email Address \_\_\_\_\_

Work Phone \_\_\_\_\_ Home Phone \_\_\_\_\_

I. Subject Area: *Please select only one subject area (most appropriate)*

|                                     |                                     |                                                 |
|-------------------------------------|-------------------------------------|-------------------------------------------------|
| <input type="checkbox"/> Vocal      | <input type="checkbox"/> Elementary | <input type="checkbox"/> Band                   |
| <input type="checkbox"/> Jazz       | <input type="checkbox"/> Orchestra  | <input type="checkbox"/> General                |
| <input type="checkbox"/> Technology |                                     | <input type="checkbox"/> Other (Please Specify) |

II. Appropriate Grade Level(s):

|                                          |                                      |
|------------------------------------------|--------------------------------------|
| <input type="checkbox"/> Pre-Elementary  | <input type="checkbox"/> Elementary  |
| <input type="checkbox"/> Middle/Jr. High | <input type="checkbox"/> High School |
| <input type="checkbox"/> College/Univ.   | <input type="checkbox"/> All Levels  |

III. Session Title: \_\_\_\_\_

IV. Type of Session: ☐ Clinic ☐ Demo Group ☐ Panel Discussion

V. Session Description: \_\_\_\_\_  
\_\_\_\_\_  
\_\_\_\_\_  
\_\_\_\_\_

VI. Equipment Provided: AV Screen, Sound w/1/8" adapter, White Board and a Music Stand. All other equipment is the responsibility of the presenter.

I will need a piano/keyboard for my session: YES NO (Circle One)

I understand that if my proposal is accepted, my presentation could be scheduled on any day of the conference and at any time. I understand that I will not receive any funds from LMEA.

---

Signature

Date Submitted

Submit Application To: James Hearne, State Conference Chairman  
138 Kathy Drive  
Ragley, LA 70657

**Applications must be postmarked by June 10, 2019**

## **LMEA Outstanding School Administrator Award**

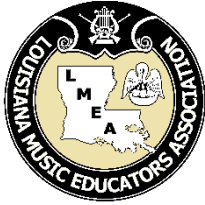
Awards and presentations will be made annually to outstanding school principals and/or superintendents who demonstrate support for and commitment to high-quality arts education programs in their schools. The influence of such administrators is a major factor in improving music education in school systems across the state. Elementary school principals, secondary school principals and school district superintendents may be selected to receive this award. Individuals holding titles as assistant principal and assistant or associate superintendent also qualify. This award is not intended to honor music supervisors, music coordinators, etc. Administrators receiving awards will be notified by the LMEA Executive Board and a presentation honoring them will take place at the LMEA Annual Conference.

### **Selection by the LMEA Committee will be based on the following criteria:**

1. The school or school district under the administrator's supervision must have an exemplary music program, with the majority of the music staff holding LMEA membership.
2. The administrator must have served in the administrative position in the same school or district for no less than three years.
3. The administrator must be an active advocate for arts education in the school and community.
4. A financial commitment to music programs must be demonstrated in the school or school district.
5. The administrators must show strong leadership, good school management, and good rapport with teachers, parents, students, and other administrators.
6. Music supervisors/coordinators are not eligible for this award.

### **Nominators must submit the following for each administrator:**

1. Completed School Administrator nomination Form verified and signed by the nominator.
2. Resume of nominated administrator.
3. Two letters of support, including one from the music education faculty in the administrator's school district.
4. A picture of the administrator suitable for publicity purposes.
5. Name and address of the administrator's local newspaper, television and radio station where applicable.
6. Additional support materials such as press clippings if available.



## LMEA Outstanding School Administrator Award Form

### Nominee Information:

School District: \_\_\_\_\_

Selection (check one): Elementary Principal: \_\_\_\_\_ Secondary Principal: \_\_\_\_\_

Assistant Principal: \_\_\_\_\_ Superintendent: \_\_\_\_\_ Assistant/Associate Superintendent: \_\_\_\_\_

Name: \_\_\_\_\_

Title: \_\_\_\_\_

School: \_\_\_\_\_

Telephone: \_\_\_\_\_

School Address: \_\_\_\_\_

City: \_\_\_\_\_ State: \_\_\_\_\_ Zip: \_\_\_\_\_

Please answer the following questions on a separate sheet in support of your selection. This form must be signed by the nominator and accompanied by a resume of the administrator, two letters of support (one from a member of the music faculty), a publicity photo, and a list of local media and their addresses.

1. How long has the school or school district been under the administrator's supervision?
2. Describe some of the features of the school or district under the administrator's leadership that demonstrate how the music program is exemplary. Please include in your description answers to the following:
  - a. Describe the music curricular offerings and time allotment of students.
  - b. How have music programs in the school/district been expanded or improved as a result of the administrator's efforts?
  - c. Have students or programs in the school or district won awards for achievement or recognition in the arts?
3. How has the administrator been an advocate for music and arts education in the school and community?
4. How has the administrator demonstrated financial commitment to music programs in their school or district?
5. Give examples of the administrator's strong leadership, good school management, and positive rapport with teachers, parents and students.
6. Add any other information that supports selection of this administrator.

### Nominator Information (Nomination must be made by an LMEA member):

Name: \_\_\_\_\_ School: \_\_\_\_\_

School Address: \_\_\_\_\_ Telephone: \_\_\_\_\_

City: \_\_\_\_\_ State: \_\_\_\_\_ Zip: \_\_\_\_\_

Nominator's Signature: \_\_\_\_\_

**Application must be postmarked by May 1, 2019.**

Mail to: Bruce Lambert, P.O. Box 12046, Lake Charles, LA 70612





## **Outstanding Young Music Educator Award**

**Purpose:** To recognize outstanding merit in music education. This award may be presented to one or more individuals new to the profession who have served their students, communities and profession in an exemplary manner. Nominations must be submitted by an LMEA member.

### **Nominee Information**

(Must be an LMEA Member)

Name: \_\_\_\_\_

Position: \_\_\_\_\_

School: \_\_\_\_\_

City/Zip: \_\_\_\_\_

LMEA District #: \_\_\_\_\_

Email: \_\_\_\_\_

Phone: \_\_\_\_\_

### **Nominator Information**

(Must be an LMEA Member)

Name: \_\_\_\_\_

Position: \_\_\_\_\_

School: \_\_\_\_\_

City/Zip: \_\_\_\_\_

LMEA District #: \_\_\_\_\_

Email: \_\_\_\_\_

Phone: \_\_\_\_\_

### **This nomination form must be accompanied by:**

- A letter of nomination from an LMEA member, including a description of the nominee's qualifications for the award.
- Two additional letters of support from persons familiar with the nominee's work. These letters may be from an administrator, colleague, parent, or community member.

### **Nominee qualifications**

Letters of support should address these qualities:

- The nominee must be a member in good standing of the Louisiana Music Educators Association
- The nominee must have completed one year but not more than five years of teaching through May 2019.
- The nominee must have high professional and ethical standards.
- The nominee must have a commitment and dedication to his or her students.
- The nominee must have met the needs and interests of students, having brought about positive results in learning.
- The nominee must have enthusiasm for teaching, love for music, and a desire to further the musical education of his or her students.
- The nominee must have shown motivation toward professional growth and development.
- The nominee may not be a past recipient.

**Send this form on or before September 1, 2019 to:**

Bruce Lambert  
Executive Director LMEA  
P.O. Box 12046  
Lake Charles, LA 70612

# *All-State Activities Photos from LMEA Conference*



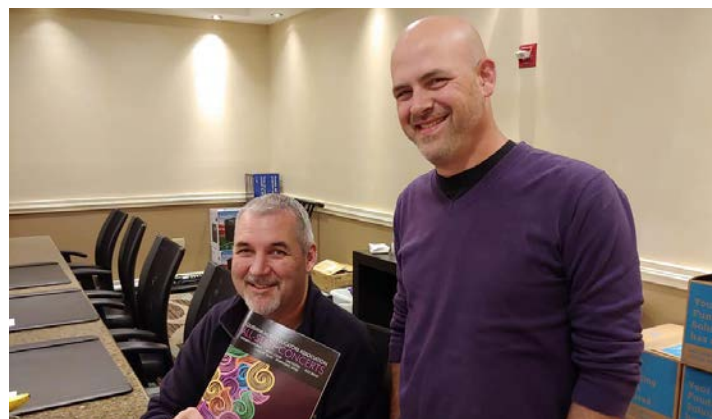


# *All-State Activities Photos from LMEA Conference*





# *Membership Photos from LMEA Conference*



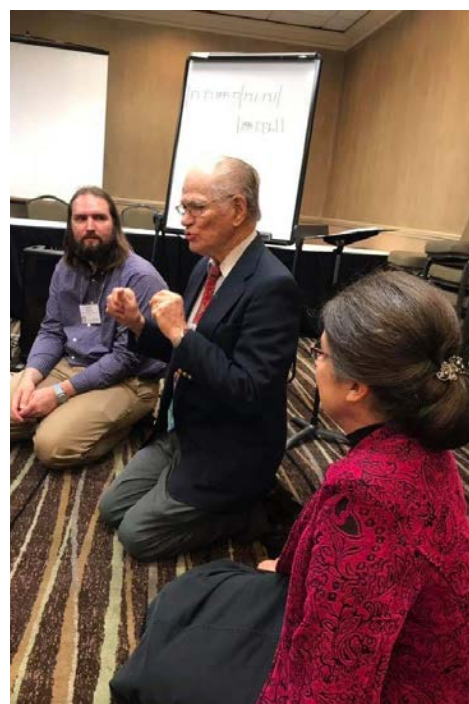


# *Membership Photos from LMEA Conference*





# *Clinician Photos from LMEA Conference*





# *Clinician Photos from LMEA Conference*





## *Guest Performance Photos from LMEA Conference*





# *Guest Performance Photos from LMEA Conference*





# Collegiate Exhibit Photos from LMEA Conference





# Collegiate Exhibit Photos from LMEA Conference





# Vendor Exhibit Photos from LMEA Conference





# Vendor Exhibit Photos from LMEA Conference



# LOUISIANA MUSIC EDUCATORS AWARDS

Official Suppliers For • LMEA Medals

**Contact:**

Bruce Lambert

P.O. Box 12046, Lake Charles 70612

Phone: 337/436-5099

**DISTRICT ASSESSMENT MEDALS**

Medals with PURPLE Ribbons (Superior in Concert)

@ \$2.25 each \$ \_\_\_\_\_

Medals with WHITE Ribbons (Superior in Sight Reading)

@ \$2.25 each \$ \_\_\_\_\_

Medals with RED, WHITE & BLUE Ribbons (Sweepstakes)

@ \$2.25 each \$ \_\_\_\_\_

Sub Total \$ \_\_\_\_\_

(\$8.00 for 1-50 Medals, \$16.00 for 51-100 Medals, \$24.00 for 101-150 Medals) Shipping \$ \_\_\_\_\_

TOTAL including Shipping \$ \_\_\_\_\_

Payment enclosed \$ \_\_\_\_\_

Ship To: \_\_\_\_\_  
Name Title

School Name: \_\_\_\_\_ Phone Number \_\_\_\_\_

Street Address: \_\_\_\_\_

City: \_\_\_\_\_ State: \_\_\_\_\_ Zip: \_\_\_\_\_

**ALL SHORTAGES AND DAMAGED MERCHANDISE SHOULD BE REPORTED IMMEDIATELY**

---

**Vendors who are interested in receiving information concerning the providing of services to LMEA in the area of T-shirt sales, photography, and/or recording should contact:**

**Bruce Lambert**

**Executive Secretary, LMEA**

**P.O. Box 12046**

**Lake Charles, LA 70612**