

L.M.E.A. Scales - B \flat Low Clarinet (Bass & Contra Bass)

♩ = 72 (minimum)

D Major (C concert)



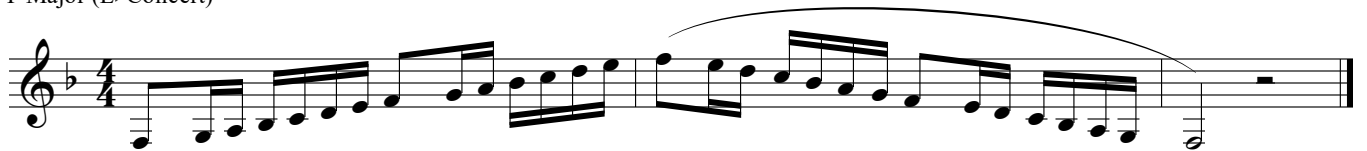
G Major (F concert)



C Major (B \flat Concert)



F Major (E \flat Concert)



B \flat Major (A \flat Concert)



E \flat Major (D \flat Concert)



A \flat Major (G \flat Concert)



B \flat Low Clarinet - Bass/Contra

D \flat Major (C \flat Concert)



C \sharp Major (B Concert) - alternate scale (Play D \flat or C \sharp in audition, not both.)



G \flat Major (F \flat Concert)



F \sharp Major (E Concert) - alternate scale (Play G \flat or F \sharp in audition, not both.)



C \flat Major (A Concert - enharmonic of B \flat)



B Major (A Concert) - alternate scale (Play B or C \flat in audition, not both.)



E Major (D Concert)



A Major (G Concert)



Chromatic

