



Louisiana All State Jazz Scales

Set 2 & 4



BASS TROMBONE

C Major

Musical notation for the C Major scale in bass clef, 4/4 time. The scale is written across two staves, starting on middle C and ascending to the next octave C.

B \flat Major

4

Musical notation for the B \flat Major scale in bass clef, 4/4 time. The scale is written across two staves, starting on B \flat and ascending to the next octave B \flat .

A \flat Major

6

Musical notation for the A \flat Major scale in bass clef, 4/4 time. The scale is written across two staves, starting on A \flat and ascending to the next octave A \flat .

G \flat Major

8

Musical notation for the G \flat Major scale in bass clef, 4/4 time. The scale is written across two staves, starting on G \flat and ascending to the next octave G \flat .

E Major

10

Musical notation for the E Major scale in bass clef, 4/4 time. The scale is written across two staves, starting on E and ascending to the next octave E.

D Major

13

Musical notation for the D Major scale in bass clef, 4/4 time. The scale is written across two staves, starting on D and ascending to the next octave D.

A Mixolydian

16

Musical notation for the A Mixolydian scale in bass clef, 4/4 time. The scale is written across two staves, starting on A and ascending to the next octave A.

18 B Dorian



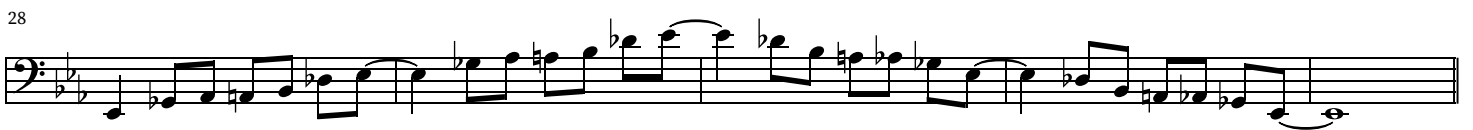
20 C Whole Tone



23 *F Blues*



28 *Eb Blues*



33 *G Blues*



Chromatic



1. Tempo is 72 BPM
2. Scales marked with an asterisk (*) are to be played in a "Swing" Style.
3. Scales without an asterisk (*) are to be played in a "Straight" Style.