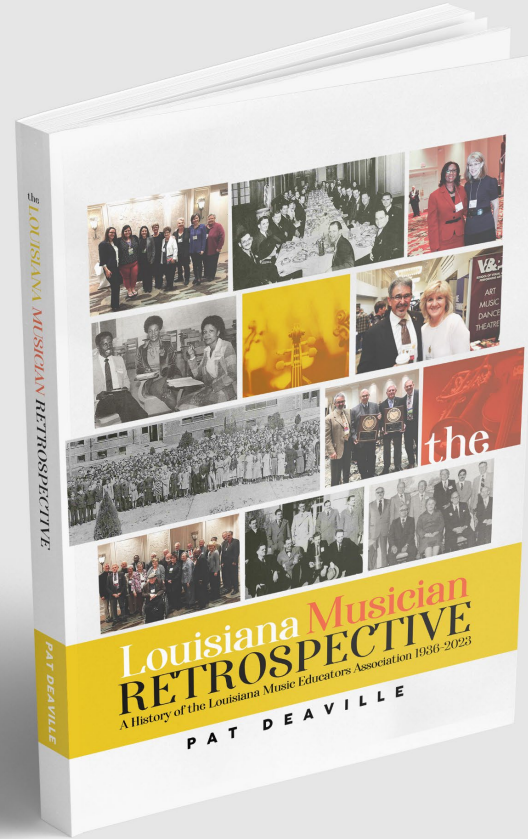


# THE LOUISIANA MUSICIAN RETROSPECTIVE

AN LMEA HISTORY PRESENTATION  
1936-2023



Introducing a  
NEW Publication  
the  
**Louisiana**  
**Musician**  
Retrospective

by **PAT DEAVILLE**

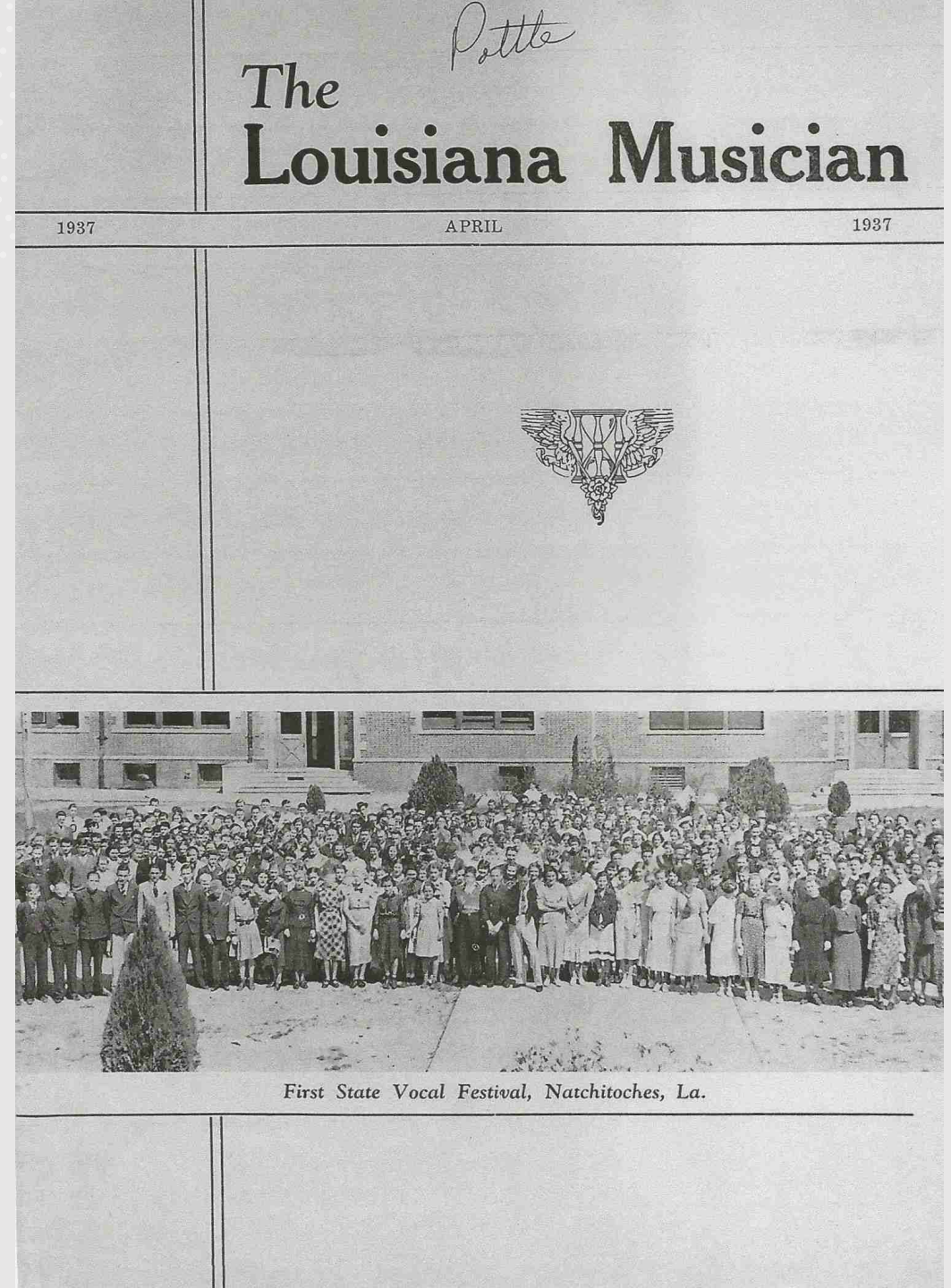
A History of the Louisiana Music  
Educators Association 1936-2023

*Books Available from the Author*

PAT DEAVILLE | P.O. Box 6294, Lake Charles, LA 70606 | [pdeaville3@gmail.com](mailto:pdeaville3@gmail.com)

The primary source of information for this book was The Louisiana Musician which has been the official journal of the Louisiana Music Education Association since 1937.

The secondary source was the “Ralph Pottle Collection” located in the Southeastern Louisiana Library.



# THE FOUNDERS' SHARED VISION FOR LMEA

## *Quantity*

*To encourage the inclusion of music education programs in all schools.*

## *Quality*

*To establish high standards of instruction, literature, and performance.*

## *Community*

*To promote a supportive environment within the music educator community.*



## Once Upon a Time in Indiana...

The LMEA story begins in Harlan, Indiana, in 1883, with the birth of **Henry Wallace Stopher**. He migrated to Louisiana in 1911 to assist in establishing a music department at the Normal School of Natchitoches. That institution evolved into Northwestern State University. At age 28, Stopher was head of the Public-School Music Division and served as the school's first band director.

In 1913, LSU's President, **Colonel Thomas D. Boyd**, made the steal of the decade with the luring away of Stopher from Natchitoches. Stopher's new assignment was to "organize and develop" the Music Department at LSU.

As the tale is often told, he began with six students majoring in music and one piano. From there, he created a school of music that, in size, reputation, influence, and lasting impact, ranks at the top among institutions in the South.

But most importantly, for the evolvement of LMEA, he organized classes to assist in preparing music teachers for employment in Louisiana's schools. **Before LMEA existed, Stopher was instrumental in designing coursework and establishing the music teacher certification credits.**





## The Kingfish Mandate

U. S. Senator Huey P. Long made a personal appearance before the State Board of Education and “suggested” the creation of a music department within the State Department of Education. In 1934, a suggestion by Senator Long was the same as a mandate. Senator Long then instructed the Louisiana Superintendent of Schools, T. H. Harris, to conduct a national search for the right person to fill the new State Supervisor of Music position. Harris explained to Senator Long that this might prove expensive. Long answered, “You find the best man available, and I’ll find the money to pay for him.”

**Sam Burns**, was the Assistant Superintendent and Director of Music for Medina County in Ohio.

---

Medina County's innovative plan of providing music programs in all schools, including isolated rural schools, had been nationally publicized in the Music Supervisors Journal. **T. H. Harris** read the article and was impressed.

Burns accepted the appointment as Louisiana's first State Supervisor of Music. It was a brilliant hire. He spent only four years in the position. Nothing has been the same since.



# “It was a sad state of affairs.”

**Sam Burns** set out to **create an overarching music education organization (LMEA)** comprised of currently employed music teachers and **use that organization’s activities to help him promote the expansion of music programs throughout the state.**

**In 1934-35, Burns found only 81 full-time public school music teachers in Louisiana** (57 in elementary schools, 14 high school vocal instructors, and 10 high school instrumental instructors).

Of those 81 full-time music instructors, 47 taught in Orleans Parish Public Schools with **Mary Conway** serving as their Music Supervisor. The other full-time music teachers were spread across 11 Parish School Systems. **But there were no publicly funded, full-time music instructors in the other 51 Parish School Systems.**

There were **some music teachers in those private schools with an affluent clientele** (mainly in New Orleans) with **Charles Wagner** serving as the de facto Supervisor for Parochial Schools.

Likewise, **some part-time music instructors were present in a few of Louisiana’s public schools**, with their stipends coming from tuition fees charged to participating students. **Howard Voorhies** operated a “for hire” part-time music teacher business supporting several school districts in Southwest Louisiana.

# LMTA

---

One of the immediate predecessor organizations for LMEA was the **Louisiana Music Teacher Association**. It was a small group with approximately **twenty-five dues-paying members**. The membership was primarily composed of college professors and private instructors. **Henry Stopher** of LSU and **Ralph Pottle** (pictured along side **David McCormick**) of Southeastern Louisiana College served terms as President of LMTA.







# LBA

Another predecessor organization of LMEA was the **Louisiana Bandmaster Association**. This group had evolved out of the **Gulf Coast Bandmaster Association** in 1932 and was composed chiefly of band directors in Orleans Parish. **Alfred Wickboldt**, **Leonard Denena**, **Richard McCluggage** (pictured to the left), and **Charles Wagner** served terms as President of LBA. This organization merged fully into LMEA in 1939, becoming the Band Division within LMEA.

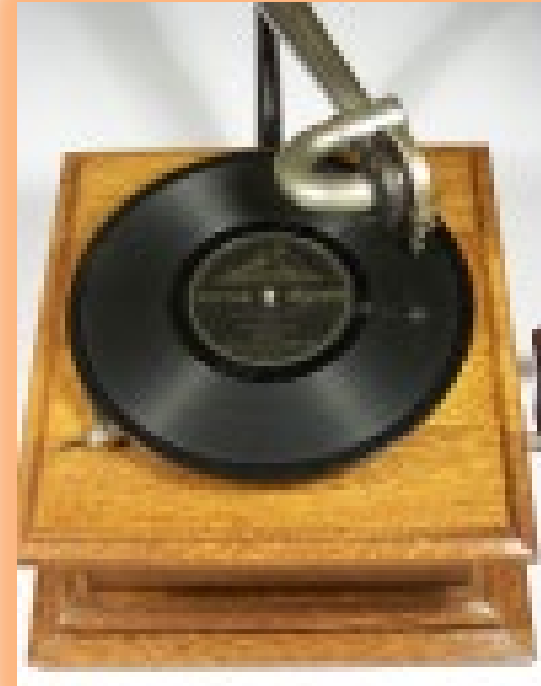
# Modern Technology

Many milestones were reached during Burns' four years of service in Louisiana. It began with elementary music.

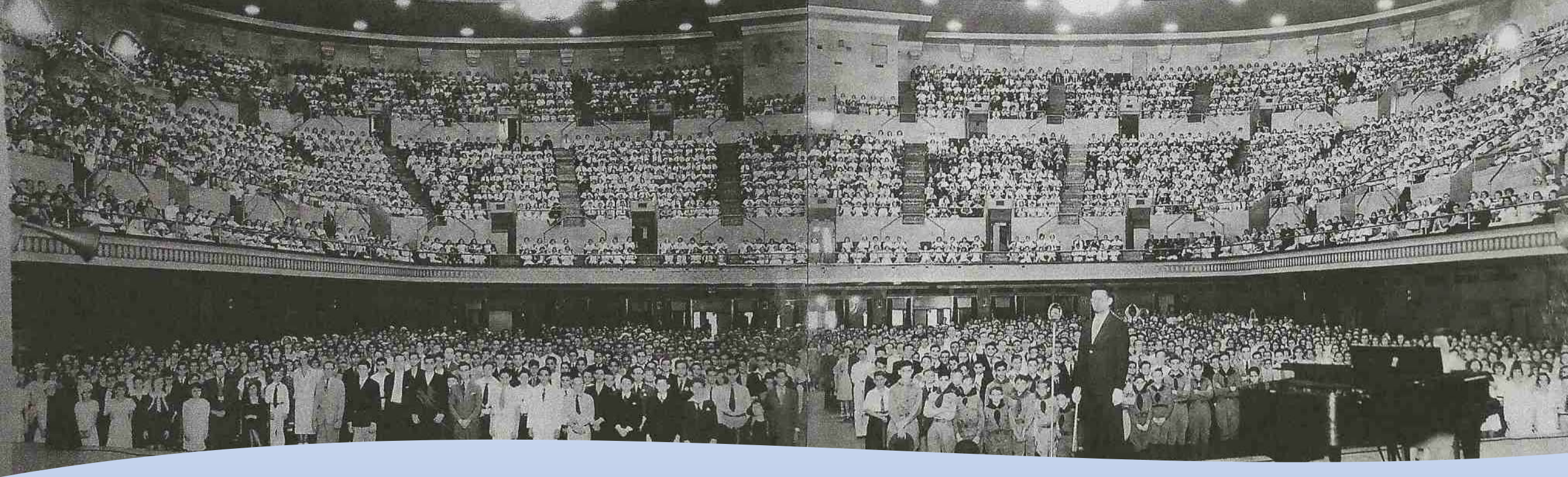
**At the start of the 1934 school year, Burns put music books, recordings, and record players in elementary classrooms across the state.**

He helped pioneer phonograph records to teach singing in schools (similar to what **Charles A. Fullerton** had done in Iowa).

As a result of these efforts, on April 10, 1935, a **Louisiana All-State Elementary Choir**, numbering 5,970 students, performed in New Orleans at the MENC Southern Division Conference. **Sam Burns** served as the conductor.







**1935**

**Louisiana All-State Elementary Choir**

**Under the direction of  
Samuel T. Burns.**

Numbering 5,970 students, the Choir performed in New Orleans at the MENC Southern Division Conference.

**Mary Conway**, Orleans Parish Supervisor of Music, was primarily responsible for bringing this Conference to New Orleans.

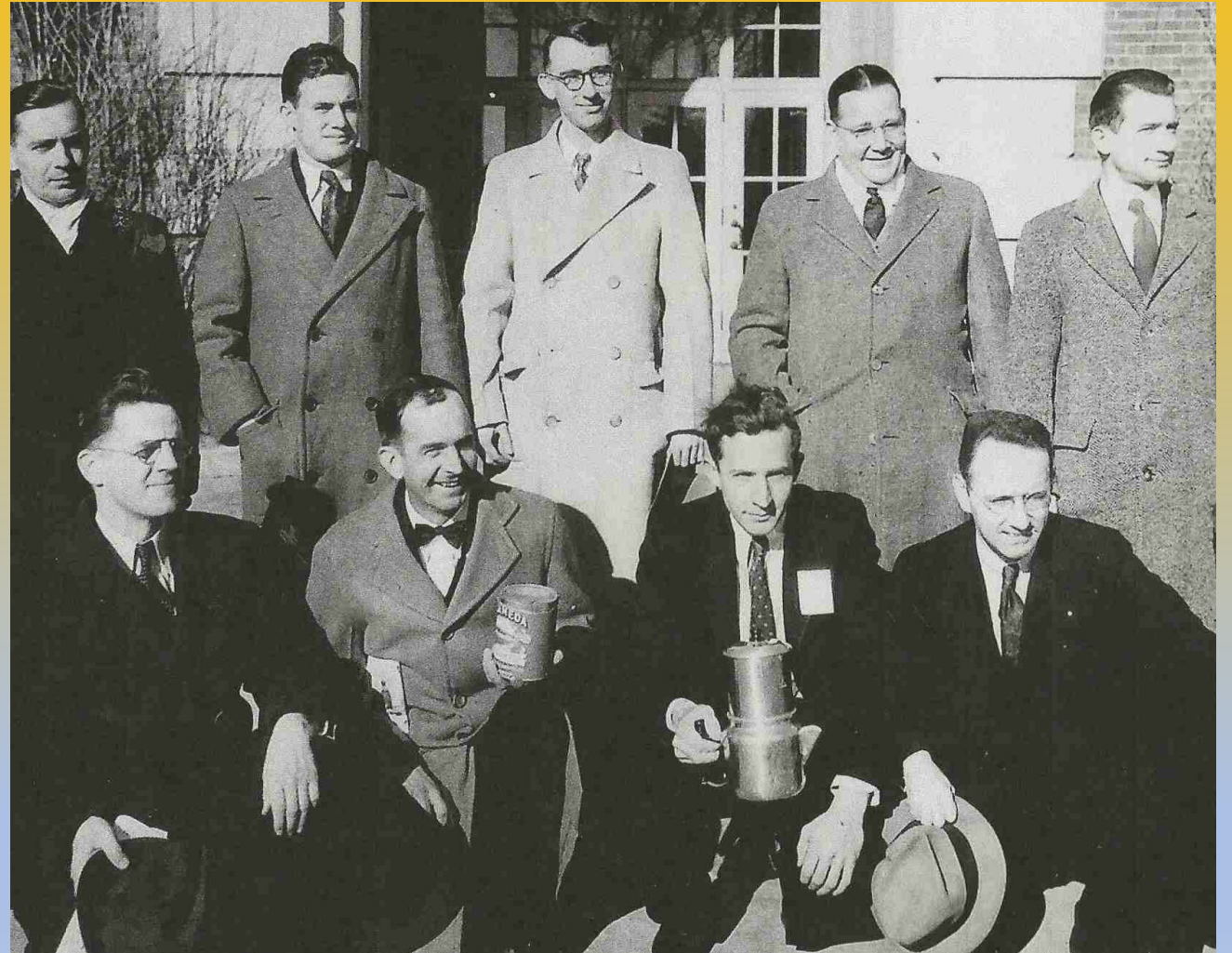
*Photo Courtesy of Southeastern Louisiana University,  
Center for Southeast Louisiana Studies,  
Ralph Pottle Collection.*



**Louisiana Delegation  
1935 National Band Clinic  
University of Illinois**

*Photo Courtesy of  
Southeastern Louisiana University,  
Center for Southeast Louisiana Studies,  
Ralph Pottle Collection.*

**Sam Burns, J. D. Fendlason,  
George Stout, Charles Wagner,  
Marius Wygaard, R. J. Vial,  
Howard B. Smith, Howard  
Voorhies, and Ralph Pottle.**







**The Louisiana  
Music Educators  
Association  
was founded on  
February 21, 1936.**

The **first LMEA Officers and Board of Directors** were selected at an organizational meeting called by State Supervisor of Music **Sam Burns** in the music building on the campus of Louisiana State University.

The **first LMEA Constitution** was also adopted at this meeting.

# ORIGINAL LMEA OFFICERS AND BOARD OF DIRECTORS

---

## 1936 Officers

**Leonard J. Denena**, President (Band Director, New Orleans). **George C. Stout**, First Vice-President (Band Director, Baton Rouge). **Mary Conway**, Second Vice-President (Music Supervisor, Orleans Parish). **Charles A. Wagner**, Secretary (Music Supervisor of Parochial Schools, New Orleans). **Howard C. Voorhies**, Treasurer (Band Director, Lafayette).

## 1936 District Directors

**Ross O. Phares**, First District (Music Supervisor, Winn Parish, Winnfield). **Marjorie Harp**, Second District (Vocal Director, Jefferson Davis Parish, Jennings). **Ralph R. Pottle**, Third District (Head of Music Department, Southeastern Louisiana College, Hammond).

# ORIGINAL LMEA OFFICERS AND BOARD OF DIRECTORS

---


## 1936 Board Members At Large

**Lincoln O. Igou** (LSU). **J. B. Bassich** (Principal at Jesuit High School - New Orleans). **Lillian Gerow McCook** (Louisiana State Normal College). **W. T. Moreau** (Principal at Montegut High School). **Sam Burns** (State Supervisor of Music.)


## 1936 Contest Committee

**Maynard Klein**, Chairman (Newcomb College of Music, New Orleans). Committee members included **M. P. Kelly** (Jonesboro), **J. D. Fendlason** (Bogalusa), **Raymond Rose** (Crowley), **George C. Stout** (Baton Rouge), **Mary Conway** (New Orleans), and **Charles A. Wagner** (New Orleans).





LMEA functioned as the Music Division of the Louisiana Teachers Association. For several decades, LMEA Conventions were blended into the larger LTA Conventions.



On **November 20-21, 1936**, the **first LMEA State Convention** was held in Monroe in conjunction with the Louisiana Teachers Association Convention.

LMEA sponsored two musical performances for 1936 LTA conventioners: The **Ruston High School Orchestra**, directed by **Harvey Nelson**, and the **Homer High School Glee Club**, led by **Marion Dormond**.

The **1938 LMEA/LTA Convention** featured LMEA guest performances by the **Winnsboro Elementary Choir** under the direction of **Miss Elizabeth Landis** and the **Roanoke High School Choir** under the baton of **Mrs. M. L. Arnaudet**.





**Cover picture for the  
Louisiana Musician**

**Volume 1 Issue 1  
April 1937**

**First LMEA State Choir Festival** was held in Natchitoches, March 11-12, 1936.

**Paul Thornton**, Head of the Music Department at Louisiana State Normal College of Natchitoches, was the Host and Festival Chair.

After the event, the **Ouachita Parish High School Choir** and the **Jennings High School Choir** received special awards and recognition.



**LMEA Delegation  
1938  
National Music Educators  
Convention  
St. Louis, Missouri.**

**Ralph Pottle, Marjorie Harp, Paul  
Thornton, Doc Edwards, Paul Yoder,  
Dwight Davis, Charlotte Dubois,  
Brooks Higdon, Sam Burns, Eunice  
Burns, Raymond Rose, A. J. Lacoste,  
Milton Cherry, Jimmie Fisher, Leslie  
Spinks, Maynard Klein.  
George Stout, Phillip Werlein III, W.  
Hines Sims, George Wilson,  
Lloyd Funchess, and Howard  
Voorhies.**

*Photo Courtesy of  
Southeastern Louisiana University,  
Center for Southeast Louisiana Studies,  
Ralph Pottle Collection.*



# “He made things happen.”

**At the start of the 1934 school year, Burns put music books, recordings, and record players in elementary classrooms statewide.**

**On April 10, 1935, a Louisiana All-State Elementary Choir**, numbering 5,970 students, was organized and performed in New Orleans at the MENC Southern Division Conference.

**On May 3-4, 1935, the first State Band Festival** was held in Baton Rouge, with 27 bands participating.

**On March 11-12, 1936, the first State Choir Festival** was held in Natchitoches. **Paul Thornton**, Head of the Music Department at Louisiana State Normal College of Natchitoches, was the Host and Festival Chair.

**Then, in April 1937, The Louisiana Musician was first published**, fulfilling an essential cohesive function for the fledgling organization. The first Editor was **Ross Phares**, with **Howard Voorhies** being noted as the Business Manager.

**On May 7-8, 1937, the second State Band Festival** was held at Neville High School. The adjudicated events included 85 instrumental soloists, 34 concert bands, and 16 marching bands.

**On August 2, 1938, the first LMEA All-State Orchestra** rehearsed and performed at LSU. Co-conductors were **George G. Wilson** of Kansas State College and **Josephine Mitchell** of Highland Jr. High School (Louisville, Kentucky).

# LMEA evolves under Howard Voorhies.

LMEA's fourth President, **Howard Voorhies**, traveled extensively throughout Louisiana during his tenure as President (1938-39). In his travels, he galvanized the membership, then facilitated significant changes to the original LMEA Constitution.

In 1936, **annual membership dues were \$2**, with \$1 placed in the LMEA account and \$1 forwarded to MENC.

By 1939, the **dues-paying membership of LMEA had reached 200**. In comparison, the LMTA membership had been only 25 in 1931.

A significant change in 1938 was the sanctioning of **District Music Festivals**. In 1939 the first LMEA District Festivals were hosted by the **Louisiana State Normal College of Natchitoches** (District I), **Southwestern Louisiana Institute** (District II), and **Southeastern Louisiana College** (District III).



# **1939 LMEA Constitution Revision under the Presidency of Howard Voorhies.**

1939 LMEA Annual Luncheon

Alexandria, Louisiana.

In the new Constitution, Divisions were  
created.

Band - **Charles Wagner**

Vocal - **Sherrod Towns**

Orchestra - **George Barth**

Piano - **LeRoy Carlson**

*Photo Courtesy of Southeastern Louisiana University,  
Center for Southeast Louisiana Studies,  
Ralph Pottle Collection.*



Some of the special  
men and women in the  
formative era of  
LMEA.  
1930s -1950s

**Phil Kendall, Polly Gibbs, Walter Minniear,  
Louise M. Alton, Harold H. Ramsey,  
Velma Nichols Willey, Francis G. Bulber, and Robert C. Gilmore.**





# 1939 Homer High School Phil Kendall

The band program grew from seventeen members in 1938 to over two hundred fifty in 1959.

In 1957, the Homer Band was featured at the Orange Bowl in Miami.





## **“Polly Gibbs gave LMEA national credibility.”**

**Polly Gibbs** was a Louisiana native and music teacher who had graduated from Northwestern University in Evansville, Illinois. **Sam Burns’** vision could not have been fulfilled without recruiting piano teachers into LMEA. By 1938, Gibbs had brought piano teachers into fold.

Gibbs was on the music faculty at Louisiana State University for thirty-seven years, retiring in 1969. **She was a nationally recognized educator who gave LMEA outstanding leadership and promoted an all-inclusive philosophy.** In addition, her national reputation as a consultant and influential writer gave LMEA instant credibility in music circles nationwide.

## Walter and Mary Minniear at his Hall of Fame Induction.

**Walter Minniear**, a native of Illinois, came to our state and built a powerful reputation shortly after **Sam Burns** arrived.

In 1936, Minniear taught band, choir, and orchestra at Ouachita Parish High School. He consistently won sweepstakes trophies with all three ensembles.

But, more importantly, his groups helped “set the high-performance standards” for LMEA festivals.

Minniear served as Secretary of LMEA immediately preceding the organization’s incorporation in 1957, then served as President during the four years following the incorporation of LMEA.





## **“Her career touched the entire state of Louisiana.”**

At the start of her career in the 1930s, **Louise M. Alton** was the first full-time vocal music teacher at Gonzales High School.

She then created both the vocal and instrumental programs at St. Francisville before becoming the first full-time music teacher at Thibodaux High.

After World War II, she was the first choral director at Broadmoor High School in Baton Rouge.

During her long career she taught and supervised music instruction at the elementary, secondary, and collegiate levels. She served as President of LMEA while teaching at Louisiana Tech University. Alton then joined the North Texas State University faculty and was named an Honor Professor.





## **The child prodigy who became a legendary teacher.**

**Harold H. Ramsey** and his wife “Ninny” arrived in Louisiana from Mississippi in 1935. LMEA was about to be established, and **Sam Burns** was spreading music programs to urban and rural schools statewide.

Ramsey’s first task was to build the band programs in Jennings and Lusher in the southern part of the state. Once done, he migrated to Bossier City and **developed the Bossier High School band program into national prominence.**

By the mid-1940s, he was very active in LMEA, serving three terms as President.

## **“She set the standard by which all other choir programs were measured.”**



**Velma Nichols Willey** transcended regional affiliation. A graduate of the Louisiana State Normal College (NSU), Columbia University, and the Julliard School of Music, Willey was a powerfully influential choir director and vocal instructor serving in the southern and northern parts of the state. Willey was an LMEA Vocal Division Chair during her active choir-directing years.

From Morgan City High (1935) to Ouachita Parish High (1941) to Monroe's Grace Episcopal Church (1947) to Northeast Louisiana College (1951), Willey established a level of instruction and performance that elevated vocal music standards, influenced choir directors throughout the state, and brought national acclaim to Louisiana.

Her Ouachita choir performed for the Southern Division MENC Conference in Birmingham. With MENC's recommendation, they were selected to perform at the International Eisteddfod in Llangollen, Wales, placing fourth out of the sixty-four choirs chosen from around the globe.



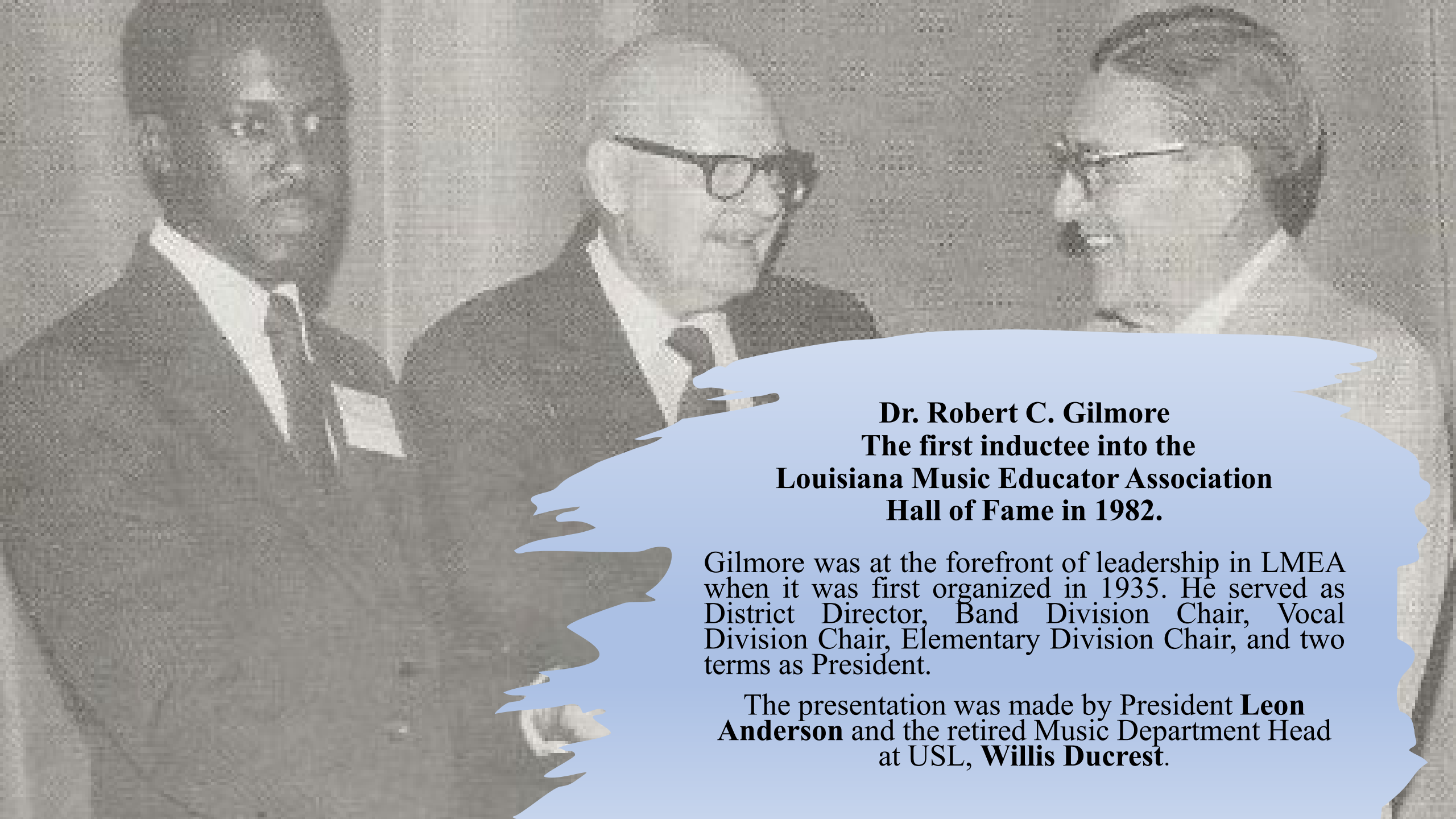
## Director of the LSU Community Music Project

In the 1930s, **Francis G. Bulber** served as Head of the Music Department at Pearl River College and Director of the Community Music Project at LSU, which helped initiate many school and community bands and orchestras throughout the state.

Before joining the McNeese Junior College Music Department (McNeese State University), Bulber founded the Lake Charles Civic Symphony. In 1940, he organized the Lake Charles Messiah Chorus and served as McNeese's first band director. **In 1953, he conducted the first of many national broadcasts of "The Messiah" for the Armed Forces Network.**







**Dr. Robert C. Gilmore**  
**The first inductee into the**  
**Louisiana Music Educator Association**  
**Hall of Fame in 1982.**

Gilmore was at the forefront of leadership in LMEA when it was first organized in 1935. He served as District Director, Band Division Chair, Vocal Division Chair, Elementary Division Chair, and two terms as President.

The presentation was made by President **Leon Anderson** and the retired Music Department Head at USL, **Willis Ducrest**.

# Strong influencers in the middle era of LMEA's development.

New Orleans, Universities, Multi-  
Cultural, and Noted Leaders.



**The New Orleans influence  
on the early era of LMEA  
was evident in this Past  
Presidents photo.**

Included in the photo is the first  
LMEA President, **Leonard Denena**  
(top left), along with **Rene  
Louapre, Peter Dombourian,** and  
**Milton Bush.**

Two others with ties to New Orleans  
were **Ralph Pottle** and **Howard  
Voorhies.**

**Brad Daigle** and **Bob Gilmore** are  
also pictured.







**The Collegiate  
influence was evident  
in this picture of Past  
Presidents attending  
the 1981 LMEA  
Convention.**

**Brad Daigle, 1950-52 and  
1970-72;**

**Louise Alton, 1962-66;**

**Robert Gilmore, 1941-43  
and 1968-70;**

**Ralph Pottle, 1937-38;**

**Peter Dombourian,  
1966-68;**

**Robert Shambaugh,  
1974-76;**

**Milton Bush, 1972-74;**

**John Davis, 1956-57;**

**Arthur Hardy, 1978-80; and  
Walter Minniear, 1958-62.**

## “A premier leader in the heritage of LMEA All-State Orchestras.”

**Roger DiGiulian** began his career as an orchestra director for the Extension Division of the University of Southern Mississippi, where he was Co-Director of the South Mississippi Youth Orchestra.

After three years as an orchestra director in the Dallas Independent School District, he moved to Monroe. He then served as an orchestra director at the elementary, junior high, and senior high levels for twenty-three years. After retirement, he was a part-time string instructor at NLU (ULM).

During his thirty-three years as an LMEA member, he served multiple terms as Orchestra Division Chair and conducted the Louisiana All-State Orchestra in 1963. DiGiulian also contributed to The Louisiana Musician as he wrote the “Orchestra Music Reviews.”





**“Northwest Louisiana  
was the center of  
marching band  
excellence for two  
decades.”**

The rich traditions of **Ken Green** (Bossier City), **F. B. Ward** (Jonesboro-Hodge), and **Wallace Van Sickle** (Natchitoches High), were further enhanced by **Doug Peterson** at Airline High School in the 1960s and 70s.

*Photo: Bill Swor (center)  
awards Airline High School  
with the LSU Marching  
Contest First Place Trophy.  
Airline Drum Major Renee  
Frame (left).*





**The LMEA  
Multi-Cultural  
Committee**

**Dr. Ernest Lampkins**, Caddo Parish Music Supervisor, was the first Minority Awareness Representative to the LMEA Board of Directors in the 1970s.

Pictured left to right are **Leon Anderson** (LMEA President), **Patricia Britton**, and Chairperson **Dr. Vicki Lott** of Southern University in Baton Rouge.

## **“Edith Elliott Duhon redefined elementary music in Louisiana.”**

Duhon began as an itinerant elementary music teacher, then became a junior high vocal and general music teacher. Later in her career she served as the Caddo Parish Elementary Music Coordinator, and then as the Music Supervisor for all Caddo Parish Schools.

As Music Supervisor, she organized and helped write the first elementary curriculum for Caddo Parish and the Orff-Kodaly revision. Duhon was also deeply involved in creating the State Curriculum Guide for Elementary Music.

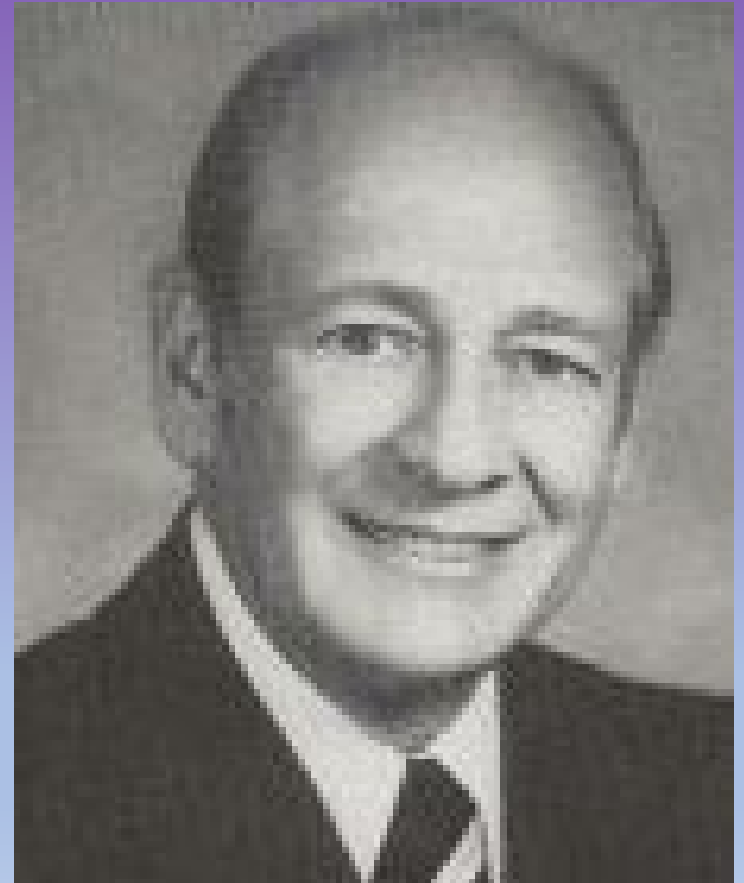
She developed an enthusiastic interest and expertise in the Orff-Schulwerk and Kodaly methods of teaching music and was the first President of the North Louisiana Orff Association.



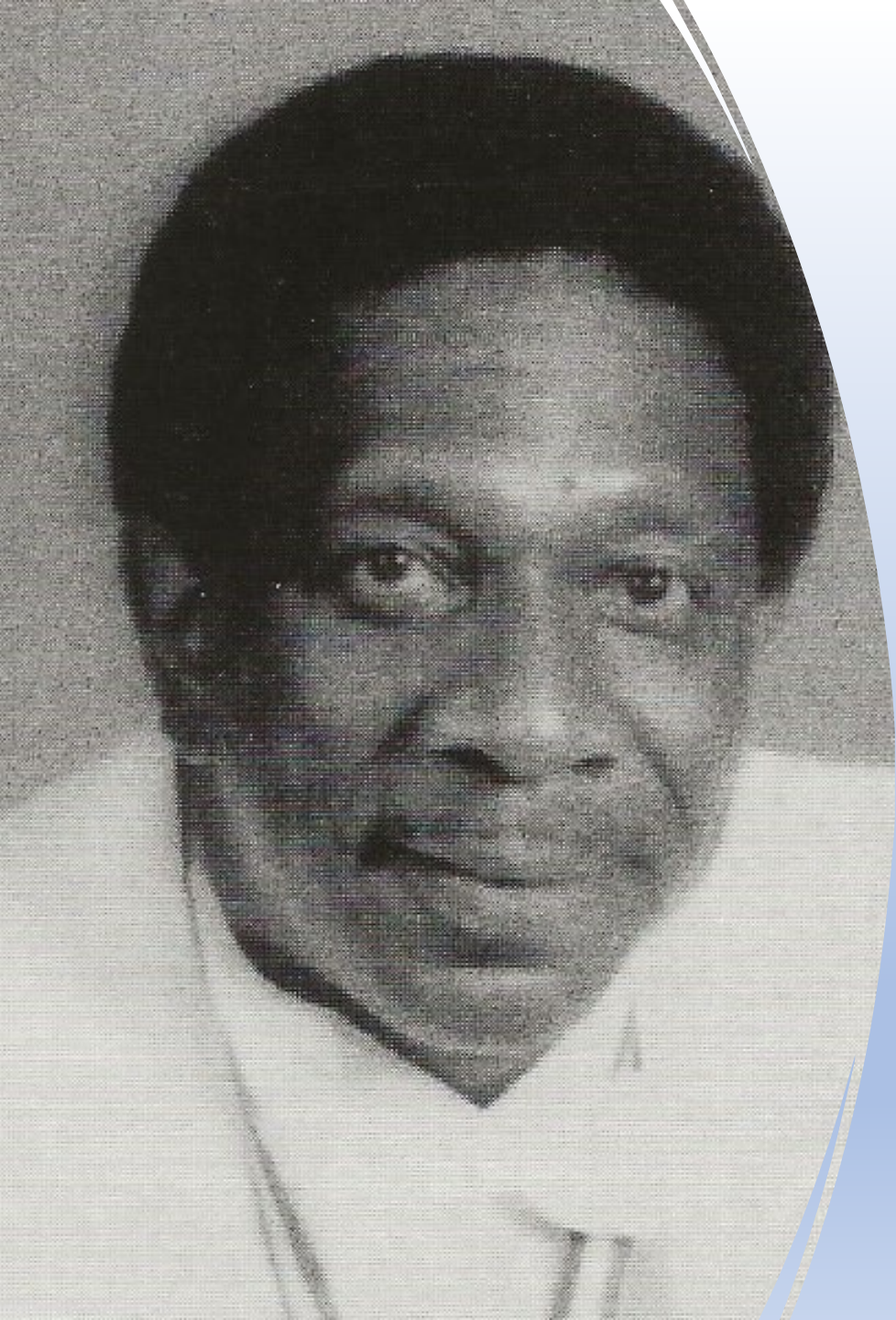
## “An extraordinary thinker and leader.”

Before arriving in Baton Rouge, **Robert Shambaugh** taught K-12 vocal and instrumental music and served as Music Supervisor in Fort Wayne, Indiana, and Palo Alto, California. In addition, he published more than thirty articles in various professional journals.

At LSU, Shambaugh was a Professor of Music and Coordinator of Music Education. During his forty-five-year career, Shambaugh had the unique distinction of being President of both the Indiana Music Educators Association and the Louisiana Music Educators Association. He also was selected as President of the MENC Southern Division.







**Lloyd Harris, Jr.** was a native of New Orleans and a graduate of Xavier University.

---

In 1963, Harris' band at VC Jones Elementary School was named the NOMA Superior Sweepstakes Award Winner. In 1964, this honor went to his band at Alfred Lawless Junior High School. Three years later, his group was the first African American band to receive a sweepstakes trophy at an LMEA state festival.

Harris became the band director at McDonogh #35 High School in the fall of 1969. During his tenure there, the McDonogh Band earned sweepstakes trophies for sixteen consecutive years. In addition, in 1971 and again in 1972, this band was selected the Most Outstanding Band in its division at the Tri-State Music Festival.

Harris has received both the New Orleans Public Schools Superintendent's Music Award and the Comprehensive Music Award. He was selected as the New Orleans Public Schools Teacher of the Year in 1986 and 1992.



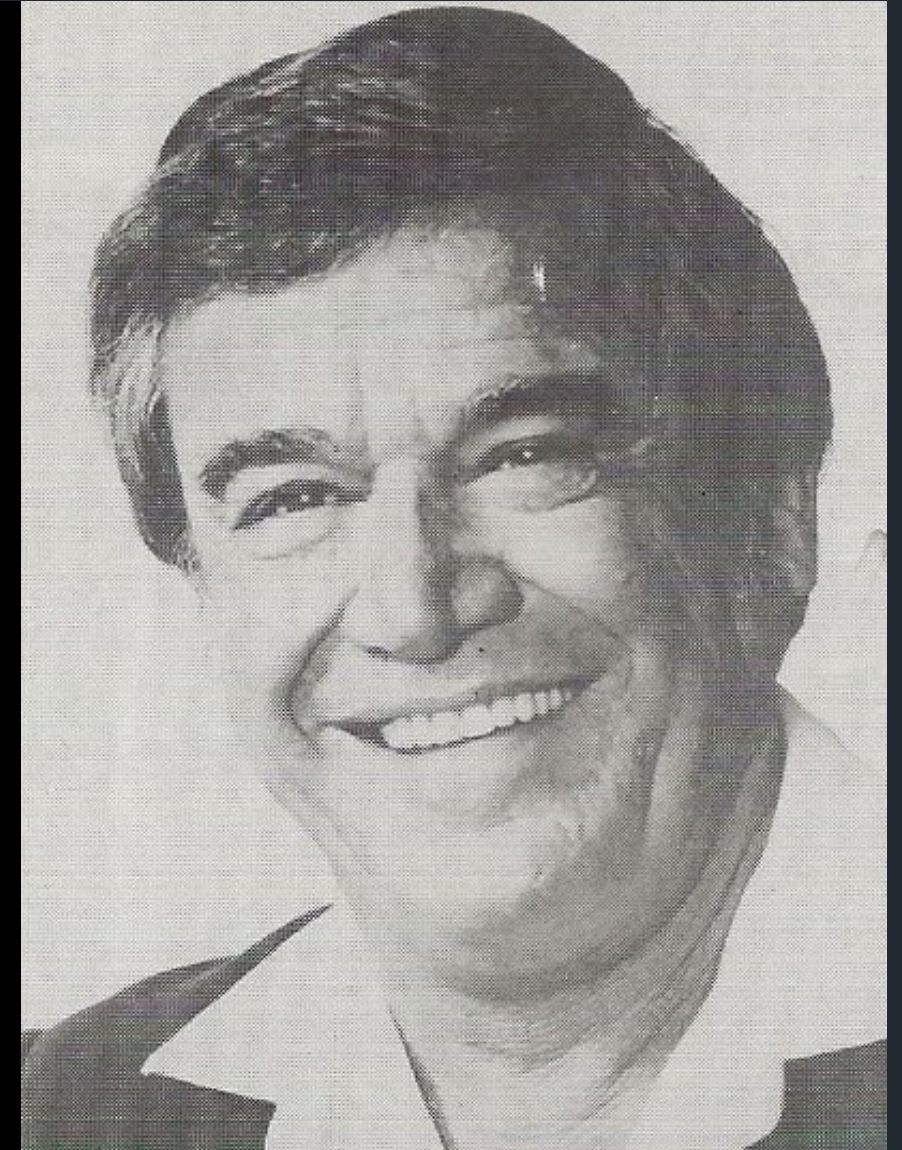
## “Moosie was the man.”

After serving in the Navy during World War II, **James “Moosie” Gory** attended a series of Louisiana colleges before graduating from Southwestern Louisiana Institute (ULL).

In 1960, Gory assumed the band director position at Thibodaux High School. He began with only 19 students. That grew to 191 students twenty years later.

At Thibodaux, Gory established and maintained one of the finest programs in our state’s history. Under his leadership, the band program gained national and international acclaim.

During his tenure, the band earned the Gold Award at the Estes Park Festival in Colorado and the Outstanding Band Award at the first International Band Festival in Vienna, Austria.



## “He was Central Louisiana.”



**Jerry R. Payne** began teaching at Alexandria Junior High in 1958, building an extraordinary reputation with sweepstakes performances. Payne became band director at Alexandria Senior High in 1970. The program grew to be one of the finest in Louisiana. The ASH band was selected by Dr. William D. Revelli to represent Louisiana in the 1972 International Band Festival in Vienna and received straight superior ratings from an internationally acclaimed panel.

After completing his doctoral studies, he assumed duties as the Director of Bands at his alma mater, Northwestern State University. During his tenure at NSU, Payne was selected as President-Elect of LMEA.

Upon his retirement from Louisiana, Payne moved to Texas, took a dormant program in Marshall, and developed it into one of the finest high school bands in the state. He later served as UIL Region Coordinator and Executive Secretary of that region.



## “Frank Mannino was the Godfather of jazz education in Louisiana schools.”

Early in life, Mannino was drawn into the music scene by his uncle, the great jazz trombonist Santo Pecora. Mannino played clarinet, saxophone, and flute in Pecora's band. Mannino later organized the Frankie Mann Orchestra.

Once his teaching career began, Mannino continued as a band director for thirty-seven years. He served at Holy Name of Mary High School, Ridgewood Prep, Holy Cross High, East Jefferson High, and T. H. Harris Junior High.

Mannino introduced the jazz ensemble into LMEA. He organized the first All-State Jazz Band and was the first Chairman of the Jazz Division. He brought the National Association of Jazz to the state and served as the Louisiana Chapter's first President.





# **Some Dynamic Duos of LMEA.**



**L. Bruce Jones** (right) brought the emerging rich and resonant symphonic band sound of the University of Illinois and implemented the concept at LSU beginning in 1945, he did a repeat performance, building one of the top university band programs in the nation. His enormous achievements impacted music performance standards throughout the country. He is noted as one of the “greats” of his era.

**Everett Timm** (left) taught in Westfield Iowa Public Schools, at Morningside College, and at the Eastman School of Music. At LSU, he was a vital music faculty member and Conductor of the LSU Symphony Orchestra. In 1955, he became Director of the LSU School of Music. Timm served as President for both the National Association of Schools of Music and the MENC Southern Division.







**Willis F. Ducrest** (right) was a protégé of **Dr. Stopher** and a product of the LSU School of Music. In 1940, he became the Choral Director at the Southwestern Louisiana Institute (USL/ULL). By 1948, Ducrest had become the School of Music Director.

Ducrest brought Louisiana into the national limelight during his record-setting thirty years of leadership in the Music Teachers National Association. During this time, he served as the Louisiana State President, Southern Division President, National Treasurer, and National President.

**Nolan Sahuc** (left) began his teaching career in Hosston and Shreveport. After just three years of secondary teaching, he joined the music faculty at the University of Southwestern Louisiana, where he remained for most of the next thirty-four years of his career. He started as an Assistant Professor and eventually became the USL School of Music Director.

Sahuc briefly interrupted his tenure at USL with a three-year term as the State Supervisor of Music. Beginning in 1948, Sahuc served LMEA as Editor of The Louisiana Musician.



At 19, **Nena Plant Wideman** (right) graduated from Louisiana State Normal College (NSU) with a BA degree, including a minor in art. A brilliant pianist (who later became a close friend of Van Cliburn), Wideman began teaching in Homer before continuing her studies at Centenary. In 1943 she taught in Marion, Alabama, then served as Head of the Fine Arts Department at Southern State College in Magnolia, Arkansas. Returning to Shreveport in 1946, she opened a private music school in Shreveport. Later, Wideman taught at Centenary College for eleven years and was one of its first featured soloists. In addition, she helped to form the Shreveport Symphony and served on the LMEA Board of Directors as the Piano Division Chairman.

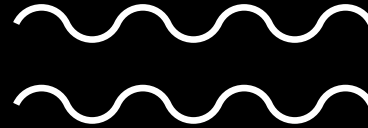


**Doris D. Bienvenu** (left) was a native of Lafayette. She earned her Bachelor of Arts degree from Southwestern Louisiana Institute (ULL) and her Master of Education in Music and Education Specialist degrees from USL (ULL). Her career work experiences include public and parochial classroom music, private piano instruction, and directorships of choral activities at East Jefferson High, Lafayette High, and Acadiana High. Her choruses were consistent sweepstakes winners.

Active in LMEA for forty-four years, she served as the Vocal Division Chairman on the LMEA Board of Directors. Bienvenu co-authored vocal music curriculum guides for both Lafayette Parish and the State of Louisiana. She was an adjudicator, administrator, clinician, and guest choral conductor throughout Louisiana.

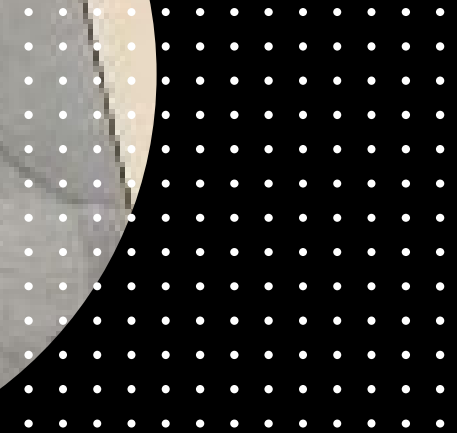
### **Milton Bush** (top)

served seventeen years as band director at Behrman High School in New Orleans, before joining the University of New Orleans music faculty. Bush served on the LMEA Board of Directors as Band Division Chairman and later as President. He was selected as Band Director of the Year by the Louisiana Bandmasters Association in 1974, and had a national reputation as an adjudicator, guest conductor, and clinician.



### **Peter Dombourian** (bottom)

was a band director at Behrman High School, John F. Kennedy High School, and Benjamin Franklin High School. He also served as Instrumental Music Supervisor for Orleans Parish Schools. His conducting resume included the New Orleans Summer Pops Orchestra, New Orleans Civic Symphony, and the New Orleans Concert Band. Dombourian served as President of LMEA and conducted the Louisiana All-State Orchestra.

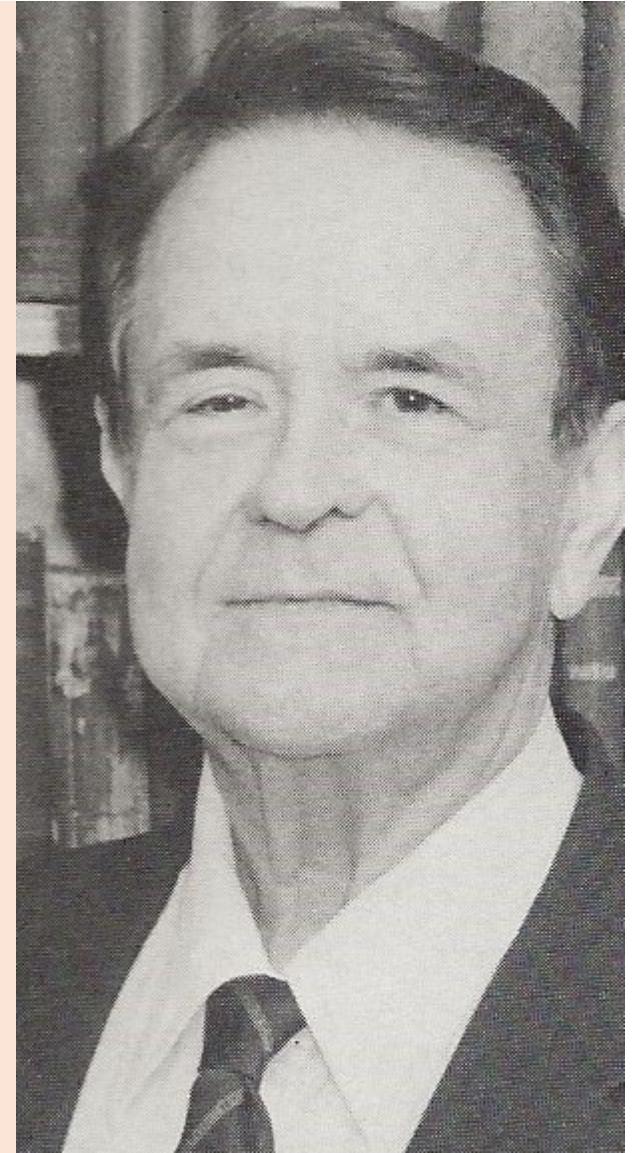






**Bob Weatherly** (right) served as the principal trumpet of the U.S. Air Force Band and the St. Louis Symphony. In 1961, Weatherly became the Director of Bands at Southeastern Louisiana College (SLU) in Hammond. His group became the first “small-college” band chosen to appear in concert at the National Conference of the College Band Directors Association. After receiving his Ph.D. from LSU, Weatherly assumed duties as SLU's Head of the Department of Music.

**Bill Causey Sr.** (left) organized the Centenary-Shreveport Summer Concert Band and was the Conductor from 1957 to 1997. He also held the position of principal trumpet in the Shreveport Symphony and performed with many traveling shows. Causey was a band director at Centenary College in Shreveport for forty years, with additional duties as a trumpet teacher and Professor of Music.





**Marie Cotaya** (center) served as President of LMEA and as President of the Women Band Director National Association.

She started as an itinerant teacher in New Orleans preceding her directorships at Jackson and Woodlawn High School. Then she earned national acclaim as the Chairman of the Music Department and Director of Bands at Scotlandville Magnet.

Cotaya was awarded the *Silver Baton* by the Women Band Directors National Association and the *Scroll of Excellence* by the WBDNA.

**Catherine Heard** (left) earned her music education degrees from Louisiana State University and VanderCook College of Music in Chicago.

For over three decades, she was a band director in the Baton Rouge area, with award-winning tenures at Walker High School, Baker Junior High School, and Baker High School.

Heard served as LMEA President and National President of the Women Band Directors National Association. She also served as State Chairman of the American School Band Directors Association.

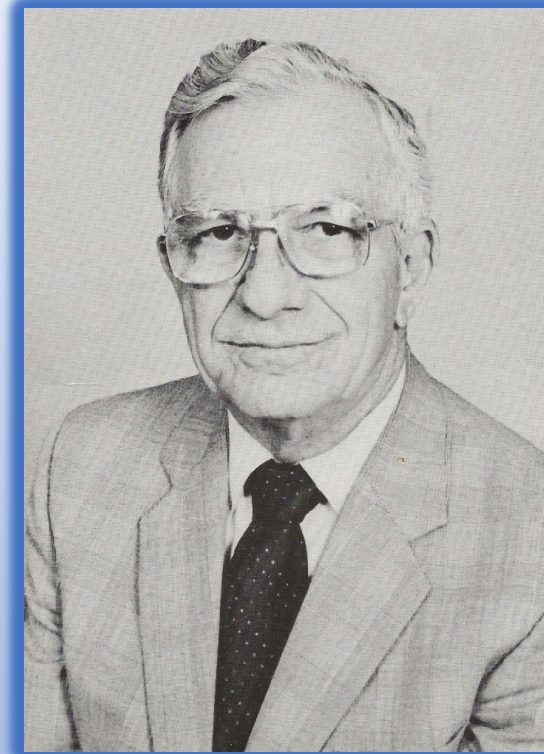


*(Picture with Cotaya and Heard are the military music directors in Washington D. C. - Col. Bourgeois, Col. Allen, and Commander Beck.)*

Beginning in 1973, LMEA combined the traditional offices of Secretary and Treasurer into the Executive Secretary position.

**Brad Daigle** (left) served as LMEA Band Division Chairman and was twice elected President. Following his time in elected positions on the Board of Directors, he was selected as the first Executive Secretary.

**Easton LeBouef** (right) was a product of Nicholls State University and succeeded Brad Daigle as Executive Secretary in 1986 after serving LMEA as a District Director, Band Division Chair, and President.





**Tom D. Wafer** (left) taught elementary, junior high, and high school band and orchestra in Ouachita Parish, West Monroe, and the Monroe City School System. While working on his doctorate at LSU in 1970, he charted the halftime shows of the LSU Tiger Band. After that, he was appointed as an Instructor of Music at LSU and served as Assistant to the Dean of the LSU School of Music. **In 1977, Wafer was appointed State Supervisor of Music Education.** Wafer was an LMEA Board of Directors member for twenty-five years, serving as a District Director, Editor of The Louisiana Musician, and Chairman of the annual LMEA Professional Development Conference. He received the **LMEA Distinguished Legacy Award** in 2023.



**Martin Sotile** (right) served as a band director and Principal before he joining the staff of the Louisiana Department of Education in Auxiliary Service and **was named the State Supervisor of Music Education in 1987.**

For eighteen years as State Music Supervisor, Sotile was a champion for all phases of the arts and an essential voice on the LMEA Board of Directors. He was an active advocate of the Very Special Arts Festival. In addition, he played a crucial role in the revival of the Louisiana Chapter of the American Choral Directors Association and its annual Vocal Music Conference.

*The **Robert Wilhite** and **Barbara Butler** Awards of Excellence were established by LMEA “to honor quality high school and middle school music programs serving historically disadvantaged student populations.”*

Beginning in 1966, **Robert Wilhite** (left) served the small community of Lawtell in St. Landry Parish. Under his leadership, this small rural school produced unprecedented accomplishments, with 360 students selected to all-district bands, ten to the all-state orchestra, and consistent superior ratings earned at small and large ensemble LMEA festivals.

**Barbara Butler** (right) taught in the Bogalusa City School System for forty years. Her ensembles earned the highest ratings at district and state festivals, with large numbers of her students being selected for membership in All-State choirs. Butler served LMEA as a District Director for many years.



**Raul S. Prado's** (top) Terrebonne High School Band earned superior ratings in several states at marching, concert, and jazz ensemble competitions. Following his tenure at Terrebonne, he was the band director at Nicholls State University. Beginning in 1980, he became the Thibodaux Community Concert Band Conductor. Prado served LMEA in multiple capacities, including President and District Director. He played a vital role on numerous committees such as Elections (Chair), Sightreading, and Constitution Revision.

**Julie Prado** (bottom) taught students in public and private schools throughout Lafourche and Terrebonne Parishes. She also trained many young pianists through private lessons. Her bands consistently received top honors in LMEA district and state festivals. She was constantly in demand as an adjudicator and clinician. Her Southtown Middle School Band performed for the ASBDA National Convention in New Orleans.

Prado held various offices in many professional organizations throughout her long career. She was a District Director for LMEA and served as both Treasurer and President of Phi Beta Mu. Likewise, she was the Recording Secretary and President of the District VII Band Director's Association.

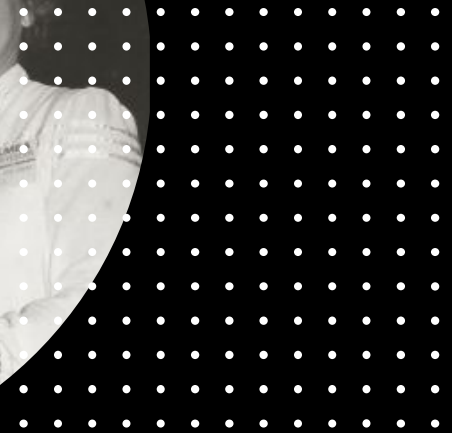
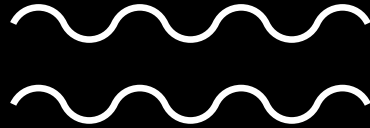




**Tom Burroughs** (left) conducted outstanding instrumental music programs for over three decades at multiple Louisiana public schools, including Denham Springs High School and consistently earned First Division ratings. Burroughs served as President of both LMEA and LBA. He has been named the Bandmaster of the Year by both LBA and Phi Beta Mu.

During his time at West Monroe, **Mike Spears** (right) led the band to an impressive record of First Division performances at the district, state, and national levels. The band has been acclaimed as outstanding in both marching and concert performances. He has been named the Bandmaster of the Year by both LBA and Phi Beta Mu.

Spears served as President of the District I Band Director Association and as an LMEA District Director.

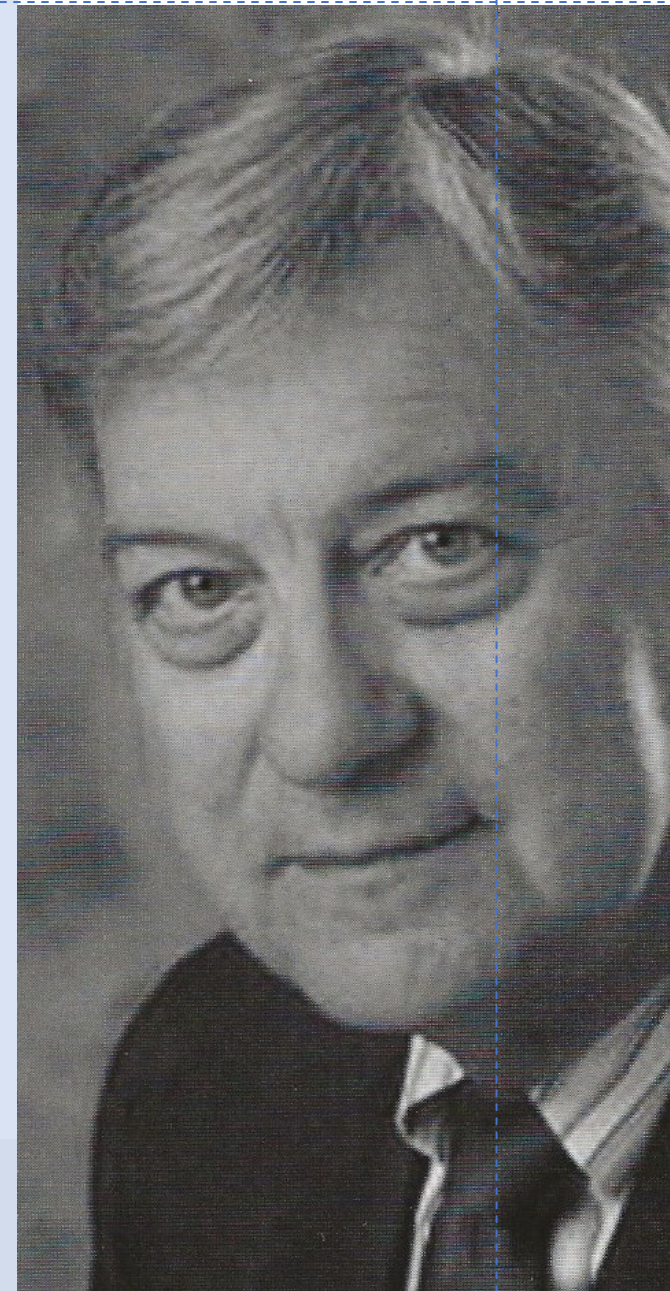




**Jack White** (below) began teaching at Ouachita Junior High School in 1958 and was Director of Bands at Ouachita Parish High School from 1964 to 1970. In 1970, he became Director of Bands and Associate Professor of Music at Northeast Louisiana University (ULM). White, who served as President of the Louisiana Bandmasters Association and the Louisiana Chapter of Phi Beta Mu, has an impressive list of professional awards. He was Bandmaster of the Year for both LBA and Phi Beta Mu and received the coveted *Citation of Excellence Award* from the National Band Association.



From 1963 through 1965, **Joseph Hebert** (right) was the second tuba in the New York Philharmonic Symphony Orchestra under **Leonard Bernstein** and the principal tuba in the American Symphony Orchestra of New York City under **Leopold Stokowski**. Upon his return to New Orleans, he served as the principal tuba with the New Orleans Opera House Association and the New Orleans Ballet while often performing with the New Orleans Symphony. Hebert began his teaching career in 1965, serving as a band director at St. Aloysius High School and then at Warren Easton High School. In 1969, he joined the Loyola University music faculty as a band director and instructor in low brass, music education, and jazz studies.

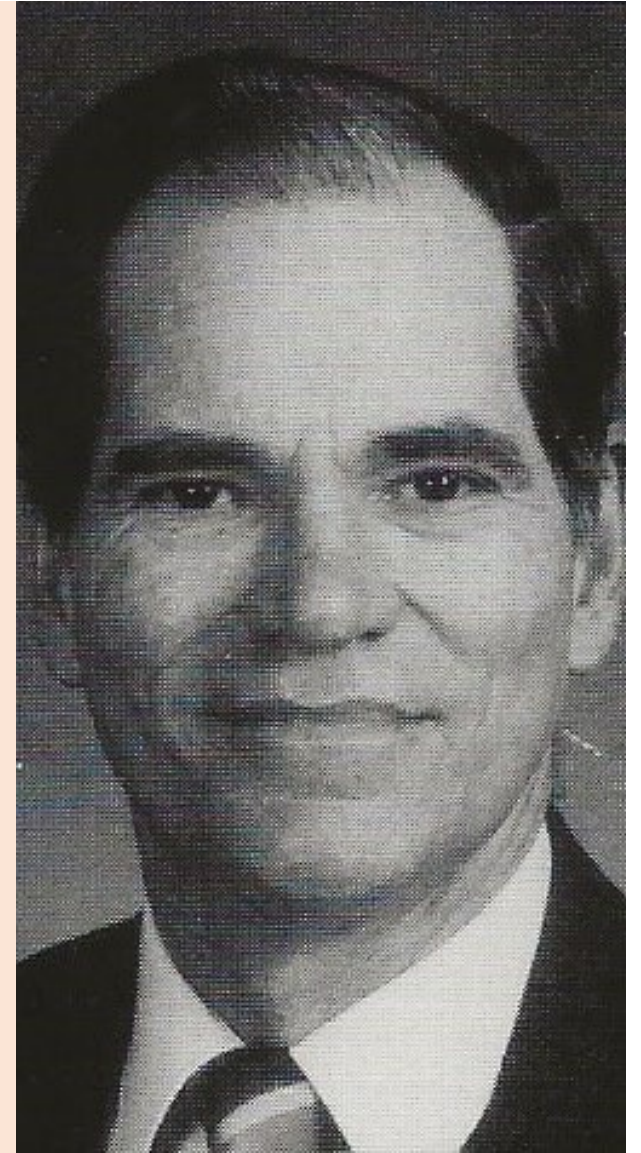






**Anna Lou Babin's** (left) distinguished career was centered on teaching vocal music and piano in the elementary schools of Calcasieu Parish. After four decades of commitment as a teacher and countless sweepstakes awards with her choirs, she became the Vocal Music Mentor for Calcasieu Schools. Babin held offices within LMEA and the District Vocal Music Teachers Organization for many decades. She served LMEA as the Vocal Division Chairman and was a VMTO President.

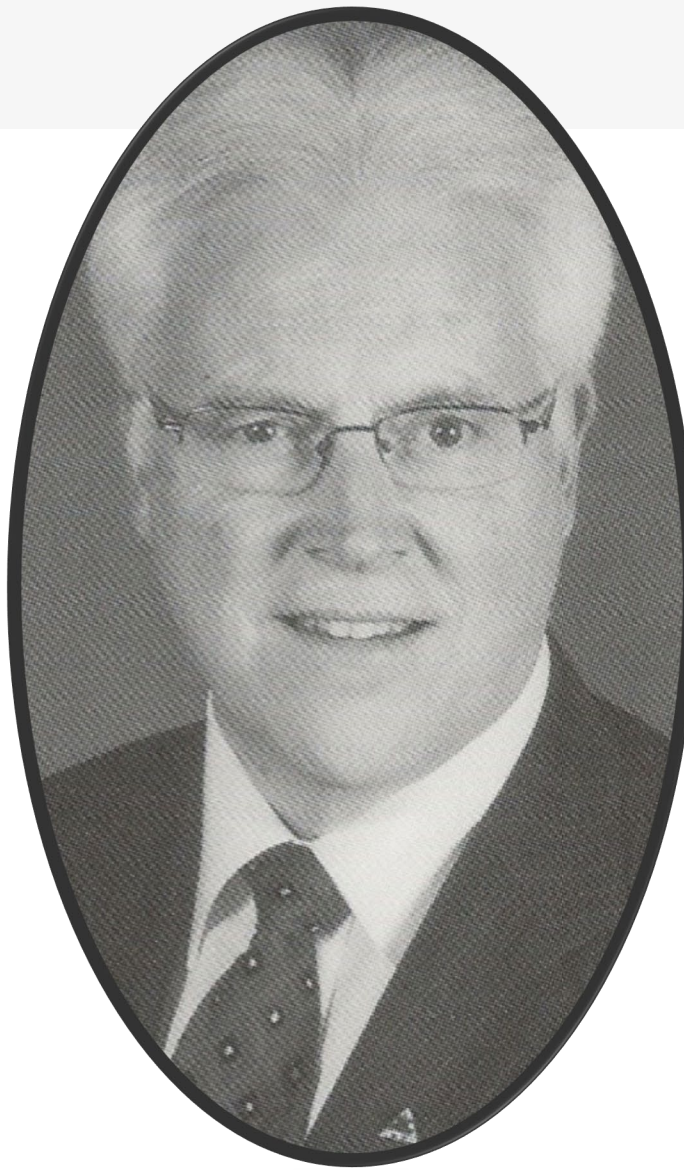
**Lamar Robertson** (right) taught all levels of music, kindergarten through college, at many schools, primarily in Calcasieu Parish. In addition, he has been an instructor in Kodaly training courses in Texas, Oklahoma, Tennessee, Idaho, Wisconsin, Minnesota, Ohio, Connecticut, Massachusetts, Louisiana, and Taiwan. Roberson was an active member at the local, district, state, and national levels, holding offices in affiliated professional groups and on the Boards of LMEA and NAFME. He served LMEA as the Elementary Division Chairman. He has served as President of the Louisiana Kodaly Educators and helped establish the Louisiana Choral Foundation.





**Karl Carpenter** (left) served on the LMEA Board of Directors for two decades in various positions, including District Director, Band Division Chairman, Orchestra Division Chairman, and President. He began teaching in 1979 as a band director at Oberlin High School. From there became the band director at Winnfield Senior High in 1982, preceding a long tenure as Director of Bands at Tioga High School. Carpenter transformed the Tioga band program into one of the largest in Central Louisiana while earning many regional, state, and national awards. He began his administrative career in 1999, advancing to the Principalship of Pineville High School (Magnet Center for the Creative and Performing Arts).

During **Johnny V. Walker's** (right) thirty-year career as a band director, Walker served at Winnfield Middle School, Bolton High School, and Pineville High School. At Pineville, where he completed the last twenty-eight years of his teaching career, he grew the band program into one of the premier instrumental music organizations in Central Louisiana. His ensembles won numerous awards and accolades, including many sweepstakes honors at regional, state, and national events. Throughout his career, Walker has held local and state positions for LMEA, including serving as President of the District II Band Directors Association and then as LMEA District Director for an entire decade.





**Fran Hebert** (left) was a dedicated and highly accomplished vocal music teacher for over four decades. Throughout her tenure at Acadiana High School, her ensembles were consistent sweepstakes winners in LMEA district and state assessments, as were her elementary and middle school choirs. Hebert was active in LMEA for decades, serving as District Director, Vocal Division Chairman, and President.



**Greg Oden's** (right) was the Director of Choral Activities at West Monroe High School. Oden also served as the Music Coordinator for the Ouachita Parish School System. The choral program at West Monroe High School included nearly 300 singers. Under Oden's direction the "Rebel Choir" received superior concert and sightreading ratings for 27 consecutive years at LMEA assessments. Oden has served LMEA as District Director and Vocal Division Chairman.







**James Hearne's** (top) high school and middle school performing groups have received numerous sweepstakes at district, state, and national events. He has taught at Oakdale Junior and Senior High Schools, LaGrange High School, S. J. Welsh Middle School, and Moss Bluff Middle School. Hearne has served as a guest conductor, adjudicator, and clinician throughout Louisiana, Mississippi, and Alabama. Hearne held offices in music educator organizations for many years. For LMEA, he served as District Director, Band Division Chairman, President, and Professional Development Conference Coordinator. Some of his many accolades include Phi Beta Mu's Louisiana Band Director of the Year, the prestigious National Band Association's *Citation of Excellence*, and the District V Band Director of the Year Award.



During **Carolyn Herrington's** (bottom) tenure at DeRidder High, the band consistently earned sweepstakes awards at LMEA assessments and national awards traveling from coast to coast with performances in Washington D.C., Gatlinburg, Orlando, and Winter Park, Colorado. Herrington's service to music education organizations has been continuous and profound. She served as LMEA President for an extended term during the years impacted by the devastating **Hurricanes Katrina and Rita**. In addition, she held the LMEA positions of District Director, Jazz Division Chair, Band Division Chair, Public Relations Chair, and Editor of The Louisiana Musician. Herrington was Secretary and then President of Phi Beta Mu and served on the staff of LBA's Louisiana All-Star Marching band for 22 years. She directed the Louisiana All-Star Band in 2003.

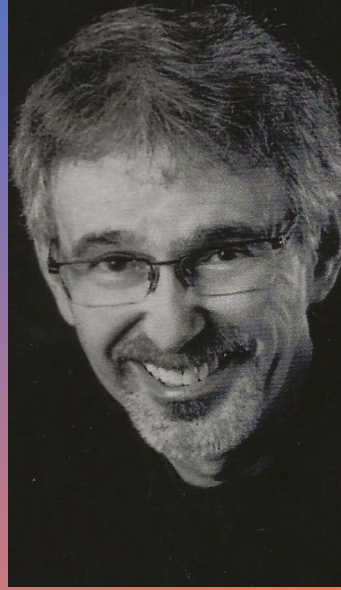




**Syll-Young Lee Olson** (right) was born in Seoul, Korea, in 1949. She graduated from Seoul National University at the top of her class. She moved to Natchitoches, Louisiana, in 1991, where she became the piano instructor at the Louisiana School for the Math Science and Arts. Later, Olson was employed by the Natchitoches Parish School System to conduct the orchestra at Natchitoches Central High School. Her students have participated in the LMEA All-State Orchestra/Symphonic Band and the NAFME All-National Honor Symphony in New York City.

From 1972 through 2005, **Johnette LeBlanc** (left) taught in the Caddo Parish School System String Program while also working with the “String Power” program and the Centenary Suzuki School. During her teaching career, LeBlanc’s orchestras have performed at festivals and events nationwide, including Orlando, Branson, Hattiesburg, St. Louis, Chicago, Houston, Dallas, San Diego, Carnegie Hall in New York, and the World’s Fair in New Orleans. Internationally, her groups have toured and performed in Rome and Florence, Italy, and at the Sydney Opera House in Australia. LeBlanc has been highly active in LMEA, TMEA, and the American String Teachers Association.





**Scotty Walker** (top) taught in the Eunice School System before serving for two years as the band director at Lafayette Middle School. He then assumed the Director of Bands position at Lafayette High School. Under the leadership of Walker, the Lafayette High Band has earned numerous state and national awards, including the NBA *Blue Ribbon Award of Excellence*, Bandworld's Legion of Honor, and the NBA *Citation of Excellence*, on four separate occasions. He has twice completed the six-year cycle as LMEA President-Elect, President, and Past-President. During his second term as President, he steered LMEA with remarkable strength and grace through one of the most challenging periods in the organization's history, with a pandemic and multiple disastrous hurricanes.

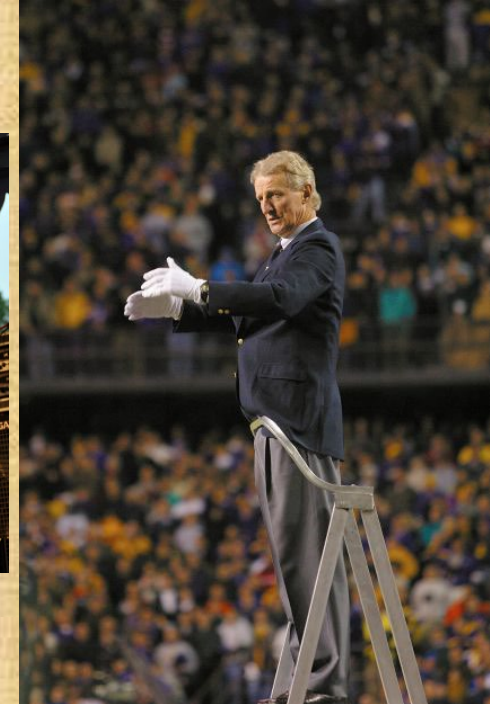


**Robin A. Daigle** (bottom) taught band at Eunice High School, Armstrong Middle School, Lafayette Middle School, and Edgar Martin Middle School. At Edgar Martin, where she completed her teaching career, there were over 400 students in the program. Throughout her three-decade tenure as a band director, her symphonic and jazz bands earned accolades in and out of Louisiana. Daigle spent the final years of her career in education as the Music Instructional Coach for the Lafayette Parish School System. Daigle has held office in several professional organizations, including LMEA, where she served as a District Director.



**Bill Brent** (left) grew the Northwestern State University band program from forty-eight members to over three hundred during his twenty-five years as Director of Bands. His Wind Symphony performed for the CBDNA Southern Region Conference, and the “Spirit of Northwestern” Marching Band became one of the most prestigious university bands in the South.

Following his time at the University of Florida, **Frank Wickes** (right) arrived at Louisiana State University and began an illustrious decades-long tenure as Director of Bands, earning countless ensemble and personal honors at the national level. He was featured in the cover story of The Instrumentalist Magazine (1994), received the national Kappa Kappa Psi Distinguished Service to Music Award (1996), and was named by Phi Beta Mu as the National Bandmaster of the Year (1998).







**Bruce Lambert** (left) was a legendary high school and collegiate band director. Following his brilliant teaching career, Mr. Lambert became an Instrumental Music Mentor for the Calcasieu Parish School System. In 2022, LMEA honored Lambert with the *Distinguished Legacy Award*. Mr. Lambert's involvement with the Louisiana Music Educators Association includes forty years of working on and with the LMEA Board of Directors. During those four decades, he spent multiple terms as the Band Division Chair before serving as President. He then ensued on a thirty-year tenure as the Executive Director.

**Pat Deaville** (right) served as an award-winning band director for twenty years. In 1993, Mr. Deaville embarked on a twenty-year administrative career, becoming both the Supervisor of Music and the Director of Curriculum and Instruction for Calcasieu Parish. In 2022, LMEA honored Deaville with the *Distinguished Legacy Award*. Mr. Deaville's involvement with the Louisiana Music Educators Association included a thirty-four-year tenure on the Board of Directors with eight years as a District Director, twenty-five years as Chairman of the annual LMEA Conference, and twenty-eight years as Editor of The Louisiana Musician.





THE LMEA  
100<sup>TH</sup>  
ANNIVERSARY  
WILL BE IN 2036!

LMEA WILL  
CELEBRATE ITS  
90<sup>TH</sup> ANNIVERSARY  
IN 2026!

