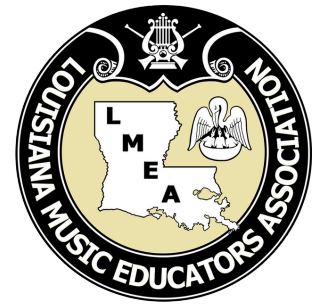


Introducing the new

LMEA PROFESSIONAL DEVELOPMENT CONFERENCE

NEW ORLEANS, LA | HILTON RIVERSIDE | JANUARY 16-19, 2025

EXHIBITOR INFORMATION



JOIN OUR EXHIBITOR KREWE!

The Louisiana Music Educators Association would like to invite you to exhibit at our 2025 Professional Development Conference in our New Orleans premiere! We're excited to welcome more students, families, teachers, and administrators to our expanded conference, and we hope to give them the experience of a true regional convention in the Gulf South!

In this day of electronic communication, many companies, colleges, non-profits, and military branches are realizing the importance of face-to-face communication. This Conference will offer you an opportunity to interact with our membership—both music educators and collegiate members—as well as parents and student members at the high school and the new middle school levels of the Louisiana All-State Choirs, Bands, Orchestra, Guitar Ensemble, Jazz Ensemble, and introducing the Handbell Choir.

Whether your goal is to gain new customers, recruit, build relationships, or you simply want to stay in contact with your current clientele, the new LMEA Professional Development Conference is a great value for your time and money!

"The new LMEA Conference is being reimagined from the ground up to make a better experience for everyone--students, teachers, administrators, and exhibitors"

LEE HICKS
President, LMEA

"...I can tell you, people from states that are not Louisiana will be at our convention, because who doesn't want to be in New Orleans? We'll have folks from Mississippi, Arkansas, Texas..."

DAMON TALLEY
Director of Bands,
Louisiana State University



MORE ATTENDEES

The New LMEA Conference anticipates over 1500 attendees including students, parents, teachers, and administrators from Louisiana and across the Gulf South.



AFFORDABLE

Booths start at \$450, introducing you to a clientele who typically hasn't attended a regional convention. Exhibitors also have access to our special hotel pricing at the Hilton Riverside!



PARTNERSHIPS AVAILABLE

Show your support for music education in Louisiana by partnering with LMEA by sponsoring student meals, internet service, signage, or spotlight your brand with a clinic!

#ForeverMusic

WWW.LMEAMUSIC.ORG

EXHIBIT PACKAGES

	Premier Exhibitor	Exhibitor Plus	Exhibitor
Location	Exhibit in the heart of the action with an oversized booth located in "The District" . This area is the hub between the clinic spaces, exhibit hall, and several All-State rehearsals.	Ensure maximum exposure by purchasing a booth at the entrance to the exhibit hall! Exhibits will be in the St. Charles Ballroom on the same floor as the clinic spaces and multiple rehearsal spaces.	Meet attendees face-to-face in the beautiful St. Charles Ballroom. Exhibit Space is located on the same floor as the clinic spaces and multiple rehearsal spaces.
Cost	\$1500 8x20 5 available	\$850 8x10 10 available Additional Booths: \$375	\$450 8x10 Additional Booths: \$275
Acknowledgement as a Premier Exhibitor on LMEA homepage with an embedded link to your website	✓		
Access to host after-hours receptions and events in hospitality suites	✓		
Logo & company profile listed on LMEA Exhibitor page with an embedded link to your website	✓	✓	✓
Featured in conference email and social media promotions prior to conference	✓	✓	✓
Social media shoutouts from official LMEA social media platforms	4	2	1
Ad in the pre-conference edition of The Louisiana Musician digital magazine.	✓	✓	
Acknowledgment and thank you in post-conference edition of The Louisiana Musician digital magazine	✓	✓	✓
Ad in LMEA's e-newsletter, The Louisiana Connection, distributed monthly through January 2025	✓		
Ad Placement in color, digital program	1/2 page (arranged horizontally) Upgrade to a full page for \$200	1/4 page (arranged vertically) Upgrade to a half page for \$100 and full page for \$300	1/4 page (arranged vertically) Upgrade to a half page for \$100 and full page for \$300
Logo on all major LMEA conference on-site signage	✓	✓	
Mail & Email List of those that have opted in	✓	✓	✓

SPONSORSHIP PACKAGES

	Lanyards \$4000 1 Available	WiFi \$4000 1 Available	Charging Stations \$2000 3 available	Photo Booth \$1500 2 Available
Description	Your company logo will be featured on the lanyards which are worn by all LMEA attendees and students. Ensure your company's visibility each day of the LMEA Conference and send home a reminder of your company's support of educators and students with these reusable lanyards.	WiFi access for LMEA attendees is a must! The exclusive WiFi sponsor will benefit from prominent exposure on a custom branded splash screen, as well as the ability to create a custom name and password for the network.	Gain exposure for your company by sponsoring a charging station. The station(s) will be strategically placed in a high traffic area, and will be accessible for all LMEA educators and students to keep their phones charged during the conference. Signage will highlight your company as a sponsor!	Gain exposure for your company by sponsoring our digital photo booth. The booth will be strategically placed in a high traffic area, and will be available for all LMEA educators and students to capture their experience while at the conference. Signage will highlight your company as a sponsor!
Logo /Company Name on all major LMEA conference on-site signage related to the sponsorship	✓	✓	Signage near charging station acknowledging you as a sponsor	Signage near photo booth acknowledging you as a sponsor
Acknowledgment of add-on sponsorship on LMEA homepage with an embedded link to your website	✓	✓	✓	✓
Featured in conference email and social media promotions with other Sponsors	2	3	2	2
Social Media Shoutouts specific to sponsorship per platform	2	2	2	2
Acknowledgment and thank you for sponsorship in The Louisiana Musician digital magazine in the post conference edition	✓	✓	✓	✓
Listing on the Sponsorship page in the LMEA conference digital program	✓	✓	✓	✓
Logo on all major LMEA conference on-site signage	✓	✓	✓	✓

Deadline

All registration, payments and ad copy must be received by **December 5, 2024**.

Registration is not complete until the form, payment, and ad copy is received. Registrations received after December 5th will incur a late fee of \$75. **No refunds will be given for cancellations.**

INFORMATION AND GUIDELINES

DESCRIPTION OF SPACE

- **Exhibitor and Exhibitor Plus:** Each space consists of an 8x10 floor space; 8' high back and 3' high side drape; one (1) six-foot table with tablecloth and skirt; two (2) chairs, wastebasket, and a 7" x 44" one-line booth ID sign.
 - For commercial, nonprofit, and military exhibitors, LMEA will provide two (2) name tags per booth and up to six (6) for multiple booths.
 - For collegiate exhibitors, LMEA will provide four (4) name tags per booth.
- **Premier Exhibitor:** Each space consists of 8x20 floor space; two (2) six-foot tables with tablecloths and skirts; four (4) chairs, and wastebasket.
 - LMEA will provide four (4) name tags.

Arrangements for drayage, additional tables, furnishings, or other equipment are not the responsibility of LMEA and must be made directly with our exhibit hall contractor, Freeman.

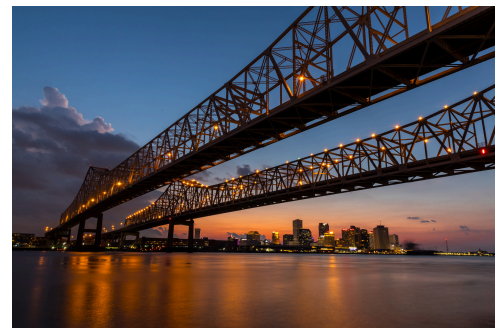
Electricity is not included in the package price. Any electricity needs should be contracted through Encore, the AV contractor for the Hilton.

Load In

Friday January 17th
7am - 10am

Load Out

Sunday January 19th
11am - 3pm



Logo and Company Profile

When completing the application, you will be asked to upload your company logo (.PNG, JPEG, EPS or Vector files) and a brief company profile (75 words or less).

Included Program Ad Specifications

Ad specs:

- Bitmap Graphics: JPEG, TIFF, or PNG. 300 dpi or higher. RGB color.
- PDF Graphics: Embedded graphics 300 dpi or higher. All text converted to outlines/curve. RGB color.
- Vector Graphics: Adobe Illustrator, or EPS. All text converted to outlines/curve. RGB color.
- All ads are full color/full bleed.

Ad sizes:

- ¼ page ad: 4.25 X 5.5 vertical layout
- ½ page ad: 8.5 X 5.5 horizontal layout
- Full-page ad: 8/5 X 11 vertical layout

1/2 Page

1/4 Page



#ForeverMusic

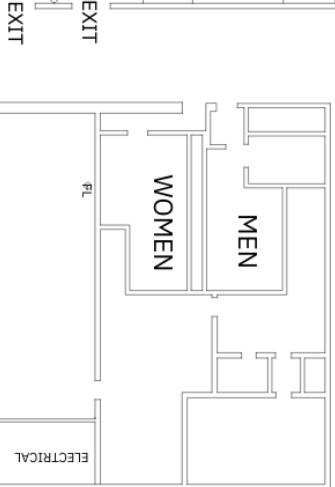
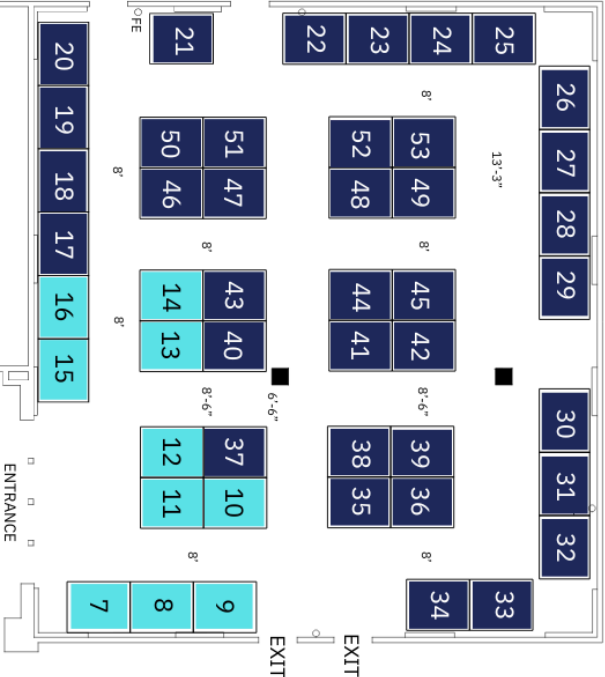
WWW.LMEAMUSIC.ORG

LMEA 2025 Conference - Exhibit Hall
 January 17-19, 2025

HILTON NEW ORLEANS RIVERSIDE - LEVEL 3 - NEW ORLEANS, LOUISIANA

ST. CHARLES BALLROOM

12' CEILING

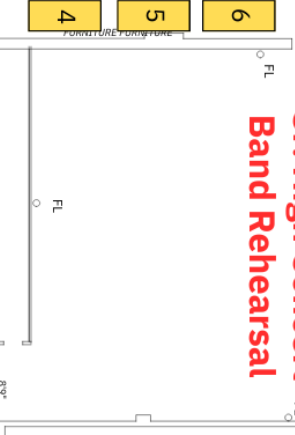


- Exhibitor
- Exhibitor Plus
- Premium Exhibitor

Map not to scale. Subject to revisions.

JEFFERSON BALLROOM

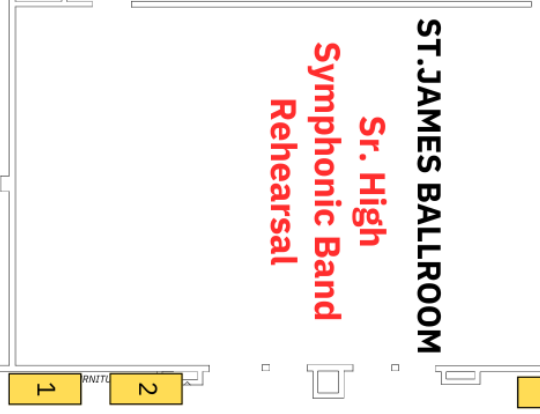
Sr. High Concert Band Rehearsal



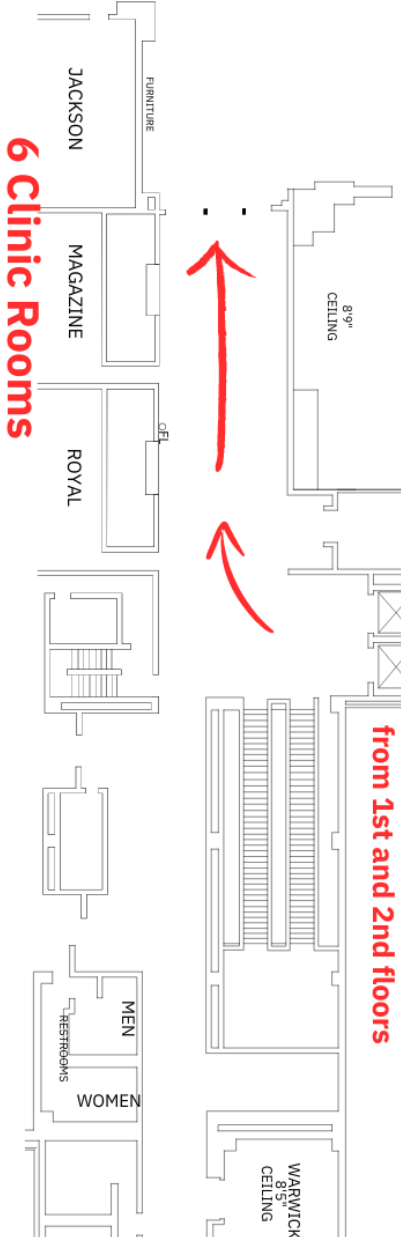
Elevators and Escalators from 1st and 2nd floors

ST. JAMES BALLROOM

Sr. High Symphonic Band Rehearsal



THE DISTRICT



6 Clinic Rooms

St. Charles Ballroom
 47 - 8' X 10' Booths



Two Poydras Street ♦ New Orleans, LA 70130
504-561-0500

LMEA Room Block Rate: \$199/night plus tax
Discounted Overnight Self Parking: \$20/night

*Note: The reservation link will be released in the fall.
Discounted room block closes on December 22, 2024.*



Purchase a booth:

bit.ly/LMEAexhibitor



Questions? email
jstearman@lmeamusic.org

Deadline

All registration, payments and ad copy must be received by **December 5, 2024**.

Registration is not complete until the form, payment, and ad copy is received. Registrations received after December 5th will incur a late fee of \$75. **No refunds will be given for cancellations.**

Liabilities and Additional Guidelines:

- Your booth must be set up and ready to show by exhibit hall opening. Hotel rules dictate certain floor protections and other policies with load in and load out, so we cannot guarantee hall access outside the scheduled load in and out times.
- You, your company's representatives, and all items related to your exhibit must remain within your designated floor space.
- All vendors are required to monitor their noise level and maintain a professionally courteous level.
- LMEA, Hilton New Orleans Riverside, Freeman, nor Encore is liable or responsible for your materials during the conference. The exhibit area is locked, secured, and patrolled by a security guard during non-exhibit hours. The District is not able to be locked, though security will be patrolling the area.
- Do not leave cash boxes or other money unattended in the exhibit area. LMEA, Hilton New Orleans Riverside, Freeman, nor Encore will assume responsibility.