

The Louisiana Musician

"The official journal of the Louisiana Music Educators Association"

Special Conference Guests



New York Voices: Peter Eldridge, Darmon Meader, Kim Nazarian, Lauren Kinhan



Doreen Ketchens



Frank Ticheli



Dr. Tim Lautzenheiser



Hila Plitmann

WHEN YOU THINK **MUSIC**
THINK SOUTHERN MISS

SOUTHERN MISS
SCHOOL OF
MUSIC



USM.EDU/MUSIC



AMBASSADORS IN BLUE

DERIDDER HIGH SCHOOL BAND

42ND ANNUAL

MARCHING FESTIVAL

OCTOBER 19, 2024 | CECIL DOYLE STADIUM | DERIDDER, LOUISIANA

TROPHIES WILL BE AWARDED FOR

SUPERIOR PERFORMANCES

BAND, PERCUSSION, COLOR GUARD, DRUM MAJOR

BEST IN CLASS PERFORMANCES

BAND, PERCUSSION, COLOR GUARD, DRUM MAJOR

SWEEPSTAKES

GROUPS WHO RECEIVE A SUPERIOR IN EACH AREA

RESERVE GRAND CHAMPION

2ND HIGHEST SCORING BAND OF THE DAY

FESTIVAL GRAND CHAMPION

HIGHEST SCORING BAND OF THE DAY

CLASSIFICATIONS BY
ENROLLMENT:

CLASS B: 1-399

CLASS A: 400-699

CLASS AA: 700-1149

CLASS AAA: 1150-1799

CLASS AAAA: 1800+

REGISTER HERE



<https://forms.gle/Sft3toZWj1mkQiA38>

\$250 ENTRY FEE | REGISTRATION DEADLINE SEPTEMBER 19, 2024

FOR MORE INFORMATION CALL (337) 463-2522 EXT. 10210 OR E-MAIL ATHEALL@BEAU.K12.LA.US

IN THIS ISSUE

LMEA Reports

Editor's Note	Page 4
Executive Board Reports	Page 8
Conference Report	Page 11
Conference Information	Page 20
Division Chair Reports	Page 24
District Director Reports	Page 36
Committee Chair Report	Page 42
Associate Organization Reports	Page 54
LMEA Financial Summary	Page 58

Featured Articles

A Magical Midwest Experience <i>by Merita Pitrie</i>	Page 13
State Solo & Small Ensemble	Page 19
Featured Conference Performers	Page 22
New Book! Birth of the Pride and Spirit <i>by Pat Deaville</i>	Page 23
Marching Festivals	Page 35
Award Recipients	Page 48

Buyer's Guide

University of Southern Mississippi	Inside Front Cover
DeRidder High School Marching Festival	Page 1
Lafayette Music	Page 5
University of Louisiana Lafayette	Page 6
Sulphur Marching Festival	Page 7
The Midwest Clinic	Page 12
Tuba Essentials	Page 15
Just Orlando Youth Tours	Page 15
McNeese State University	Page 16
Northwestern State University	Page 17
LA Tech	Page 18
LMEA Awards	Inside Back Cover

LOUISIANA MUSIC EDUCATORS ASSOCIATION

Board of Directors

EXECUTIVE BOARD

PRESIDENT Lee Hicks LeeHicks@lmeamusic.org	PRESIDENT-ELECT Jessica Fain -Blanchard jfain@lmeamusic.org	PAST-PRESIDENT Brett Babineaux bbabineaux@lmeamusic.org	EXECUTIVE DIRECTOR Scotty Walker swalker@lmeamusic.org
---	--	--	---

DIVISION CHAIRS

BAND Billy Hochkeppel banddivision@lmeamusic.org	VOCAL Stephen Galliano vocaldivision@lmeamusic.org	ORCHESTRA Katrice LaCour orchestravision@lmeamusic.org
JAZZ Doug Stone jazzdivision@lmeamusic.org	UNIVERSITY Victor Drescher victor.drescher@selu.edu	ELEMENTARY Keith James kjames@ebschools.org
NAfME COLLEGIATE Ed McClellan emcclell@loyno.edu	PUBLIC RELATIONS Joshua Stearman jstearman@lmeamusic.org	

DISTRICT DIRECTORS

DISTRICT I Robbie Freeman districti@lmeamusic.org	DISTRICT II Aleisa Hudlow districtii@lmeamusic.org	DISTRICT III Bailey Lanier districtiii@lmeamusic.org
DISTRICT IV Ryan Benoit districtiv@lmeamusic.org	DISTRICT V Aaron Theall districtv@lmeamusic.org	DISTRICT VI Telly S. Higgins districtvi@lmeamusic.org
DISTRICT VII Jim Trant districtvii@lmeamusic.org	DISTRICT VIII Michele DesLattes lmeadistrictviii@gmail.com	DISTRICT IX Stephanie Roberson stephanie.robertson@lmeamusic.org

EX-OFFICIO MEMBERS

CONFERENCE CHAIR Denise Howell conferencechair@lmeamusic.org	EDITOR Carolyn Herrington editor@lmeamusic.org	WEBMASTER Sharon McNamara-Horne lmea@lmeamusic.org	HALL OF FAME Tommy Burroughs thomas.burroughs@lpsb.org
---	---	---	---

COMMITTEE CHAIRS

ADMINISTRATIVE ADVISORY COUNCIL Tony McCardle tony.mccardle@cpsb.org	DIVERSITY/EQUITY & INCLUSION (DEI) James Square ivanthemusical@yahoo.com	GUITAR ENSEMBLE Dr. Greg Robin grobins@lpsb.org
HANDBELLS Greig Ashurst handbells@lmeamusic.org	Louisiana Advocacy Leadership Force Ginny Medina-Hamilton gmedinahamilton@gmail.com	LMAA PRESIDENT Jessica Fain-Blanchard Jessica.fain@apsb.org
Louisiana Roots Music Ed Collective Gregg Griffin gregg.griffin@vpsb.net	MENTORSHIP Cory Joy Craig coryjoycraig@gmail.com	TRI-M Lynn Burton lbarton@lmeamusic.org

ASSOCIATE ORGANIZATIONS

AOSA/Red Stick Chapter Erin Fort erinfort@gmail.com	LAJE Michael Brothers michael.brothers@southeastern.edu	LA ACDA Alyssa Carranza alyssa.carranza@stpsb.org
LA-ASTA Dr. David Saccardi dsaccardi@lsu.edu	LA PAS Dr. Gustavo Miranda gustavo.miranda@nicholls.edu	LBA Amy Kutz akutz@caddoschools.org

From the Editor's desk Carolyn Herrington

Harmony Across Generations

In our small, vibrant town of DeRidder, the junior high band is more than just a club; it's a family. Among its dedicated members, one young musician stands out: Luke Lestage, a 13-year-old with a passion for the oboe and clarinet.

The gift of music runs in his family – most specifically his grandmother who “back in the day” was a wonderful flutist. As her grandson developed his musical talents, Ms. Rosemary knew the joy she could share with young Luke would be an amazing connection. When you are a true musician at heart – you just know that playing together will be a treasured lifetime memory for both of them.

I believe in harmony across the generations! The ripple effect of music runs deep and is never forgotten. These are memories they will cherish forever.

By the way: ... Check out that amazing posture on our 77-year-old grandmother!!



PICTURED:

This is Luke Lestage (13) and Rosemary Lestage (77). Luke plays clarinet and Oboe
Rosemary plays flute.

She picked it up after decades for the first time since high school last year and started to relearn after her sister Bena gave her the flute she used back then.



LAFAYETTE
Music
COMPANY

YOUR SCHOOL BAND SOURCE
INSTRUMENTS • ACCESSORIES
SUPERIOR
SALES • SERVICE • SUPPORT

LOUISIANA'S LEADING MUSIC STORE

LAFMUSIC.COM

LAFAYETTE | 337.984.3700

LAKE CHARLES | 337.474.0430



UNIVERSITY of
LOUISIANA
LAFAYETTE

**School of Music
& Performing Arts**

**Be Bold.
Be Authentic.
Be Heard.**



**2024
2025**

Entrance Auditions

Be heard: audition to become a music major or to join one of our many ensembles.

Scholarships available!

music.louisiana.edu/register



Dec. 7

Feb. 8

String Day

Mar. 8

Mar. 22

Angelle Hall

43RD

ANNUAL

Golden Tornado

MARCHING FESTIVAL

SATURDAY, NOVEMBER 2ND, 2024 · MATT WALKER MEMORIAL STADIUM
SULPHUR HIGH SCHOOL, SULPHUR LOUISIANA

*CLASSIFICATIONS

(number of marching winds and percussion,
including front ensemble):

"B" 7-12 grade consolidated schools that march 7-8 graders, 1-40

"A" 9-12 grade schools, 1-40

"AA" 41-59

"AAA" 60-89

"AAAA" 90 or more

Please make your \$250 check payable to Sulphur High Band
and mail to

Sulphur High School Band, 100 Sycamore St. Sulphur, LA 70663

Contact (337)217-4430 ext. 2327, email mathew.mcmillen@cpsb.org

Entry deadline is October 1st, 2024

Register by scanning QR code or go to
<https://forms.office.com/r/C6rd1VQKkC>



*Large Beautiful
Trophies for all
Superior Performances*

Following special rewards will also be presented:

BEST BAND IN EACH CLASSIFICATION
BEST DRUM LINE IN EACH CLASSIFICATION
BEST COLOR GUARD IN EACH CLASSIFICATION
BEST DRUM MAJOR IN EACH CLASSIFICATION
MOST OUTSTANDING DRUMLINE OF THE DAY
MOST OUTSTANDING COLOR GUARD OF THE DAY
MOST OUTSTANDING DRUM MAJOR OF THE DAY
BOB SWEENEY DISTRICT V AWARD
THE DON NASSAR HARMONIOUS AWARD
4TH RUNNER-UP TO FESTIVAL GRAND CHAMPION
3RD RUNNER-UP TO FESTIVAL GRAND CHAMPION
2ND RUNNER-UP TO FESTIVAL GRAND CHAMPION
1ST RUNNER-UP TO FESTIVAL GRAND CHAMPION

FESTIVAL GRAND CHAMPION

Reports from Executive Board

From the President *Lee Hicks*



Welcome Back, Music Educators!

Get ready for an incredible school year filled with boundless potential and extraordinary achievements! Your students are about to embark on a journey of tremendous growth under your expert guidance and leadership. Why? Because YOU make a difference in your students' lives!

As music teachers, we have the incredible privilege of making an immeasurable impact on our students. Just this past week, I was reminded of this in the most heartwarming ways! Imagine my delight when I heard from three alumni of our Fontainebleau program, each at different stages of their musical journeys.

One graduate from 15 years ago, who now works and lives in L.A., came to New Orleans for his CD release concert – how exciting! We caught up for an hour talking about his professional life over the past 15 years touring with Dr. John, Grace Potter, Ryan Adams, and more. I loved hearing the amazing stories about his life on the road, but it was his words about how our program positively shaped his life, both musically and personally, that were truly humbling and inspiring. Then, out of the blue, I received a text from another alumnus who is touring with the Glenn Miller Orchestra – talk about living the dream! Then to cap off this incredible day, I attended an LMEA District 6 meeting where I saw yet another former student attending his very first meeting as a brand-new band director. *What a thrill!*

These three reminders of WHY we do what we do, all in one day, were simply phenomenal! It's moments like these that reinforce the lifelong impact of music education. In today's divided world, our students are searching for a sense of belonging, and we have the power to provide that safe haven. Our classrooms are where they'll create music, forge lasting friendships, and make memories that will stay with them for years to come. It's a reminder that we're not just teaching music – we're shaping lives, inspiring futures, and creating a harmonious community.

In today's competitive academic landscape, music education stands out as a beacon of hope, offering students a unique path to success and personal growth. The insane amount of over-testing in schools has created a pressing need for recognition that goes beyond standardized scores. Music education provides this crucial recognition, boosting students' confidence and motivation while validating their hard work and dedication.

The impact of music education extends far beyond the classroom walls. Students involved in music programs consistently demonstrate excellence in academics, achieve higher test scores, and develop enhanced cognitive skills. Make it a point to begin sharing these successes with your school community, local media, and news outlets. By doing that we are not only celebrating our students, but we are also spreading awareness about the profound impact music programs have on overall student achievement.

To further strengthen our case, the Louisiana Music Educators Association has established a Data Collection Committee. This initiative aims to track the academic successes of music students throughout the state, providing concrete evidence of the positive correlation between music education and academic performance. By gathering this data, we can emphasize the critical importance of incorporating music into school curricula and advocate for increased support and resources for music programs.

As we look forward to the 2024-2025 school year, LMEA is committed to providing exceptional opportunities for our membership and their students. Our dedication to excellence drives us to continuously enhance our programs, ensuring that music educators in Louisiana have access to the resources they need to thrive. The

Reports from Executive Board

upcoming LMEA Professional Development and All-State Conference in January 2025 promises to be a groundbreaking event.

We're pulling out all the stops to create an unforgettable experience for our members and their talented students from throughout Louisiana. Brace yourselves for a ***New and Improved LMEA Professional Development and All-State Conference in January 2025!***

We're not just sticking to the same old routine – we're adding more ensembles than ever by including junior high chorus, band, orchestra, and jazz bands, plus one of America's first All-State Handbell groups! For years I've heard middle school and junior high music educators make comments that there was nothing for them at the conference, so they didn't attend. By adding these ensembles and offering more clinics and workshops geared towards our elementary, middle school, and junior high educators we hope to provide an atmosphere that encourages more involvement and participation from our most critically important music teachers as you are the foundation of all of our programs!

As always, the LMEA conference will be offering cutting-edge workshops and clinics including rehearsal techniques, music technology, diversity and inclusion, the CNAfME track for our future music educators, and so much more. We will be covering as much as we can for our attendees to learn and grow as educators.

But wait, there's more! We're bringing you a star-studded lineup of concerts that will leave you breathless. Of course, we will showcase the incredible students selected to the LMEA All-State honor ensembles, but beyond that.... **Check out this line-up!!!**

- **A KEYNOTE ADDRESS... with the legendary Dr. Tim Lautzenheiser!!!!**
A Keynote with the students followed by one with the educators and adults!
- **The University of Louisiana at Lafayette Jazz Ensemble**
with the critically acclaimed New York Voices!
- **The University of New Orleans Chorale**
- **The Northwestern State University Symphony Orchestra**
- **The Louisiana CBDNA Collegiate Honor Band**
- **The LSU Wind Ensemble and A Cappella Choir**, featuring guest artists:
Legendary New Orleans Jazz Clarinetist Doreen Ketchens,
Grammy Award-Winning Singer, Songwriter & Actress Hila Plitmann,
and, including world-renowned composer Frank Ticheli.
- ***And, we are thrilled to welcome The Southern University Wind Ensemble!!!***

Imagine the impact attending these amazing concerts will have on the lives of all our all-state students! And, to be able to experience a Keynote Address with Dr. Tim Lautzenheiser! This will be a life-changing event for these talented Louisiana All-State musicians!

Don't worry educators, Dr. Tim will be addressing the adults immediately after he imparts his wisdom to the students! If you've never experienced Dr. Tim before, Boy, are you in for a Treat!!!

As you can see, this won't be the average conference you've seen in the past; it will be a celebration of music education and its incredible impact on our students. Join us as we harmonize our passion for music and teaching, creating a symphony of opportunities for the next generation of musicians. It's time for ALL LOUISIANA MUSIC EDUCATORS to work together with OUR organization, ***The Louisiana Music Educators Association***, to Make Some Joyful Noise and show the world the power of music education in Louisiana!

WE LOOK FORWARD TO SEEING YOU THERE!

Reports from Executive Board

From the President-Elect *Jessica Fain-Blanchard*

Welcome back, music educators! After what I hope was a restful and rejuvenating summer, we are excited to kick off a new school year. As you step back into your classrooms, energized and ready to make a difference, know that you have the incredible opportunity to impact your students' lives through the power of music. Together, let's prepare for an outstanding year filled with growth, creativity, and unforgettable musical experiences.

Members of our LMEA Board have been hard at work all summer to create exciting opportunities for you and your students in the upcoming year. We are committed to supporting your efforts in the classroom and beyond, ensuring that you have the resources and experiences necessary to make this year truly remarkable for everyone involved.

I am thrilled to invite you to our annual **Louisiana Music Educators Association (LMEA) Conference**, which will be held in **New Orleans in January 2025**. This year's conference is particularly special as it marks the first time educators from all disciplines will come together to attend a single, unified event.

LMEA is dedicated to serving and supporting music educators across our state, providing you with the tools, resources, and networks you need to inspire the next generation of musicians. The upcoming conference will be an exceptional opportunity for collaboration, allowing you to connect with colleagues from every corner of Louisiana, share best practices, and build lasting professional relationships.

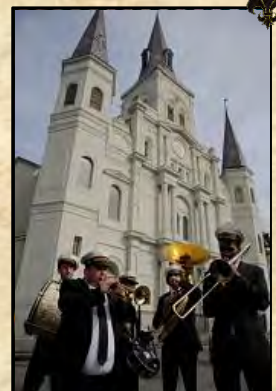
In addition to the wealth of knowledge and inspiration you'll gain from workshops and presentations, the conference will feature outstanding performances by our local universities, all-state ensembles, and special guest artists. These performances will not only showcase the incredible talent within our state but also serve as a reminder of the impact we have as educators in shaping the musical future of Louisiana.

I encourage you to attend this landmark event, where you can grow both personally and professionally while contributing to the collective strength of our music education community. Your presence and participation will help make this conference a resounding success.

As always, if you need anything, please do not hesitate to contact me at my contact information listed below. I look forward to seeing you in New Orleans and sharing this remarkable experience with you.



We look forward to
welcoming you to
New Orleans for
this extraordinary
celebration of music
education.



LMEA Conference Coordinator **Denise Howell**



Excitement Builds for the 2025 Louisiana Music Educators Association Conference

As the countdown begins for the 2025 Louisiana Music Educators Association (LMEA) Conference, the anticipation is palpable among music educators and students alike. Scheduled to take place from January 16-19 at the Hilton New Orleans Riverside, the conference promises to be an extraordinary gathering, showcasing the growth and evolution of LMEA and celebrating the incredible talent of our middle school and high school Louisiana students.

One of the most exciting aspects of the 2025 conference is the unprecedented convergence of every all-state division and music educator under one roof for the entirety of the conference. This unique opportunity will allow attendees to experience a breadth of musical and vocal excellence and professional development all at once. With nearly triple the number of exhibitors compared to previous years, the exhibit hall will be a hub of information, showcasing the latest in apparel, music, musical instruments, and educational tools, along with representation by various universities.

This year, LMEA is significantly expanding its professional development offerings, providing educators with almost 30% more sessions than in previous years. These sessions will cover a diverse array of topics, from advanced teaching strategies and innovative classroom technologies to creative approaches for student engagement. The expanded schedule ensures that every educator will find valuable insights and practical tools to enhance their teaching practices. The full schedule should be released by mid-October.

The conference will feature a keynote address by the esteemed Dr. Tim Lautzenheiser, a renowned music educator, clinician, author, composer, consultant, and adjudicator. Dr. Lautzenheiser's keynote is set to be a highlight of the event, offering insights into music education and inspiring both the all-state students and educators in attendance. His wealth of experience and expertise will undoubtedly provide attendees with valuable perspectives and motivation.

The evening concerts are poised to be spectacular, offering a showcase of exceptional talent and collaboration. The UL Jazz Ensemble will perform with the renowned New York Voices, creating a blend of jazz excellence and vocal artistry. Meanwhile, the Louisiana State University A Cappella Choir and Wind Ensemble will take the stage with a stellar lineup of guest artists, including Grammy Award-winning soprano Hila Plitmann, New Orleans clarinet legend Doreen Ketchens, and acclaimed composer Frank Ticheli.

Additionally, attendees will be treated to performances by several collegiate groups, highlighting the rich musical and vocal culture across Louisiana. These include the Northwestern State University Symphony Orchestra, the University of New Orleans Chorale, the CBDNA Honor Band, and the Southern University Wind Ensemble.

Throughout the conference, small lobby performances will add energy and excitement to the event, giving attendees a chance to enjoy live music up close throughout the day. These performances will keep the atmosphere festive and provide a backdrop for educators to connect and network with their peers.

Conference registration and hotel room blocks at the Hilton New Orleans Riverside are open now, offering attendees the opportunity to secure their spot for what promises to be a landmark event. We encourage everyone to register early and take advantage of the special rates for accommodations.

As the 2025 LMEA Conference approaches, the excitement is building. This year's event will not only honor the exceptional talent of our all-state vocalists and musicians, but also celebrate the remarkable growth and evolution of the LMEA conference. With a comprehensive program designed to engage, educate, and inspire, the 2025 conference is set to be an unforgettable experience for all involved. We are better together.



The
Midwest
Clinic

International Band
and Orchestra Conference

The 78th Midwest Clinic

December 18 - 21, 2024
Chicago, IL

Register Now!

Learn more at www.midwestclinic.org

4 Days | 50+ Performances | 100+ Clinics | 400+ Exhibits

[2024 Registration and Payment Information](#)

STATE MARCHING CHAMPIONSHIPS

Traditional and Corps Style Competition

There is no qualifier to enter the State Marching Championship Competition.

Date: November 4-7, 2024

Location: McNeese State University, Lake Charles

Registration Deadline: August 30, 2024 (midnight)

Late entries will be assessed a fee of \$50 and will be assigned the first performance position in their respective class if received after schedule is set.

A Magical Midwest Experience

By Merita Petrie



Midwest. If you mention the word “Midwest” outside of the music world, most people will think about a direction or area of the country. To a group of band directors, the word “Midwest” means so much more. It is the holy grail of clinics, the Midwest Band and Orchestra Conference held in Chicago in December each year! For many, like me, attendance at this event is a dream. There’s a magical feeling walking around McCormick Place, the host site for the conference. There are more exhibits than you can imagine, concerts of nothing but the finest ensembles, and so many clinics there’s no way to attend everything you want to see. There are THOUSANDS in attendance all with the same goal: to become a better music educator for their students. To a first-time attendee, like me, it can be very overwhelming. Here’s some things

to expect and help prepare for the trip.

Preparation

The thought of a trip like this by yourself can be daunting. I was excited at the prospect of going after waiting 14 years for the opportunity, but I was still reluctant to book everything knowing I’d be going alone. If you are in that same position, make the trip! It is so worth it! As concerned as I was planning to go, I never once felt unsafe during my trip. You may travel alone, but it is unlikely you will be alone for the duration of your trip because there are so many networking opportunities provided by the conference that you will likely find someone you know.

Many Facebook groups, such as Middle School Band Directors, also have posts about Midwest leading up to the conference. Many questions a first-time attendee may have can be answered by someone in any of these groups, usually lots of people will comment. This was a great source of info for me ahead of my first trip. I did not post anything, but others did and provided info for questions I didn’t know I had!

Dress

Since Midwest is in Chicago in December, so it will be cold. Chicago cold is not like Louisiana cold. You will need appropriate attire: heavy coat, scarf, hat, and gloves. There is no dress code for the conference, but most people go in business casual. Slacks and a button-down shirt or a sweater/blouse, but some wear jeans and a nice top or a comfortable dress. Presenters are often in suits. Shoes are an important wardrobe choice for the trip. You will walk A LOT!! McCormick Place is huge, and the happenings of the conference are spread across multiple floors.

Hotel

If you look at the conference site, there is a map with about 8 “Conference Hotels.” These hotels offer a special, less-expensive rate for the conference than they would normally charge. To avoid the cost of a rental car, look for a hotel that also offers a shuttle that runs back and forth from the conference, some as often as every 20 minutes. Other hotels are connected directly to the conference site, and you can walk back and forth without ever going outside. Having a hotel connected directly to the conference was a huge benefit and bonus for me!



Conference Schedule

Midwest also has an app available. Download it before you go. The schedule will be available in the app with locations of everything, as well as changes during the conference. When you register to go to the conference, it brings you through the schedule and allows you to mark the events that you are interested in. Those sessions you marked when you registered for the conference will appear on the front page of the app. For those who prefer something in hand, print the schedule and highlight your sessions. There are several clinics and concerts all happening at the same time. Whatever method

you choose, plan out your schedule ahead of time to make the most of your time.

At the Conference

The heavy coat that will be needed as you venture around Chicago will not be needed inside McCormick Place. Near registration there is a coat check to stash the heavy winter gear for around \$4.50 a day. If you are coming directly from, or leaving to go directly to the airport, they will also keep luggage bags for about \$1 more.

The exhibits are on the 3rd floor with the registration area. The exhibits number into the hundreds! They are grouped by the type of product: sheet music, instruments, universities, conductor batons, instrument supplies, etc. The exhibits alone can take several hours to go through. There is even a Midwest Conference gift shop right outside the exhibit hall area. All clinics are on the 1st floor. Performances are split between the 1st and 3rd floors. For us smart watch people, your watch will love you! I averaged about 6.5 miles a day just walking around the conference site.

Upon checking in, you will get a paper copy of the schedule. This 200+ page magazine style document can get quite heavy to carry around, but it does have the full schedule, concert programs, and clinician bios.

As you attend clinics and concerts, your badge (which has a QR Code) will be scanned. After the conference, you will get an email about session attendance to save for professional development credit. Badges are not scanned at the exhibit hall but be sure to spend time there. It's well worth it!

Helpful Daily Items

Most clinics do not give paper handouts. The handouts are posted on the app and the website. If you want a copy, either bring a device to download as you go through the clinics or make a list and download everything when you get home.

If you choose to bring a device (or even just a cell phone), bring a charger too. McCormick Place has charging stations where you can recharge your devices. I preferred bringing a portable battery pack and cord. That allowed me to recharge my phone without missing any clinics or concerts or being limited to seats near a plug without a good view. I took notes-old school in a notebook, and downloaded handouts when I returned home.

Bring a bag. You'll need it for your device, chargers, and notebook, but also for the exhibits. There are plenty of freebies given out, but also lots to purchase if you choose. A bag will help to carry everything through the day. While in the exhibit hall, buy early if you are interested in something. There is the possibility that a vendor may sell out of something. Some vendors also pack and leave early. The exhibits close before all the concerts and clinics finish on the last day.

Throw some snacks in the bag. There is a food court and some vending machines, but not everything is open the full length of the conference each day. Bringing some granola bars or something similar will help you. Also, bring

a refillable water bottle. Bottled water is expensive in hotels. McCormick Place has water dispensers with the big 5-gallon water jugs in the halls all through the conference area. There are disposable cups available too, but it is easy to fill a reusable water bottle throughout the day.

Coming Home

When packing to travel to Chicago, make sure there is extra room in your suitcase or an extra collapsible empty bag. You will need it when going home to put everything obtained from the conference and exhibits.

Flying home the day after the conference ends means flying just days before Christmas. For me, that meant flying the Saturday 2 days before Christmas. The airport was extremely crowded! Keep this in mind and allow as much time as possible at the airport.

For those that stay until the end of the final conference day, there is a sadness as everything begins to get packed up, like watching the magic fade. For many directors, a trip to Midwest can be a long-awaited professional goal. For those attending for their first time, may this be a helpful guide to prepare for your trip.



Merita (Mimi) Petrie is in her 15th year of teaching and is currently the Director of Bands at Caldwell Middle School. She is serving as Secretary for the District VII Band Directors Association and Treasurer, Secretary, and Past President for the Terrebonne Parish Band Directors Association. She received her Bachelors Degree from University of Louisiana Lafayette and a Masters Degree from University of Southern Mississippi in Instrumental Music Education. She has traveled the country as a member of the flute section of the John Philip Sousa National Community Band. She is the Conductor for the Houma-Terrebonne Community Band. She is also active as a flute soloist for church services and in community events such as TubaChristmas and Louisiana Philharmonic Orchestra's Play Dat event.

The "HUG" Tuba Stand

- Made of steel
- Twenty three pounds
- Adjustable to fit all tubas
- Three wheels with one lock
- Folds for mobility
- Adjustable for all players
- Sharp looking with solid brass knobs
- Band Directors Friend
- Less handling less dents
- Elementary, middle, and
- high school ready

Contact Information:

Tuba Essentials
P.O.Box 245
Wales, WI. 53183

262-617-4010

adjustabletubastand.com



JUST ORLANDO YOUTH TOURS HAS ONE PURPOSE - TO MAKE IT EASIER FOR YOU TO TRAVEL WITH YOUR GROUP TO ORLANDO.

EDUCATION, PERFORMANCE AND WORKSHOP OPPORTUNITIES AVAILABLE AT

WALT DISNEY WORLD® AND UNIVERSAL STUDIOS®

LET US MAKE ALL THE ARRANGEMENTS FOR YOUR TRIP BECAUSE IT'S WHAT WE DO BEST.



Music Scholarship & Entrance Auditions



W.A. and Dorothy Hanna
Department of Performing Arts

Nov. Feb.
10th 23rd

2024-2025

*All Instruments
& Voices*

Pre-Register:



AREAS OF STUDY:

BACHELOR OF MUSIC

Instrumental Performance

Music Education -

Instrumental

Vocal

Piano Performance

Vocal Performance

ENSEMBLES

Marching Band

Wind Symphony

Jazz Ensemble

Symphonic Band

Chamber Singers

Concert Chorale

Percussion Ensemble

Chamber Ensembles

McNeese Theatre

Bayou Players

McNEESE STATE UNIVERSITY

W.A. & Dorothy Hanna Department of Performing Arts

Box 92175, Lake Charles, LA 70609 | 337-475-5028 | www.mcneese.edu/performingarts

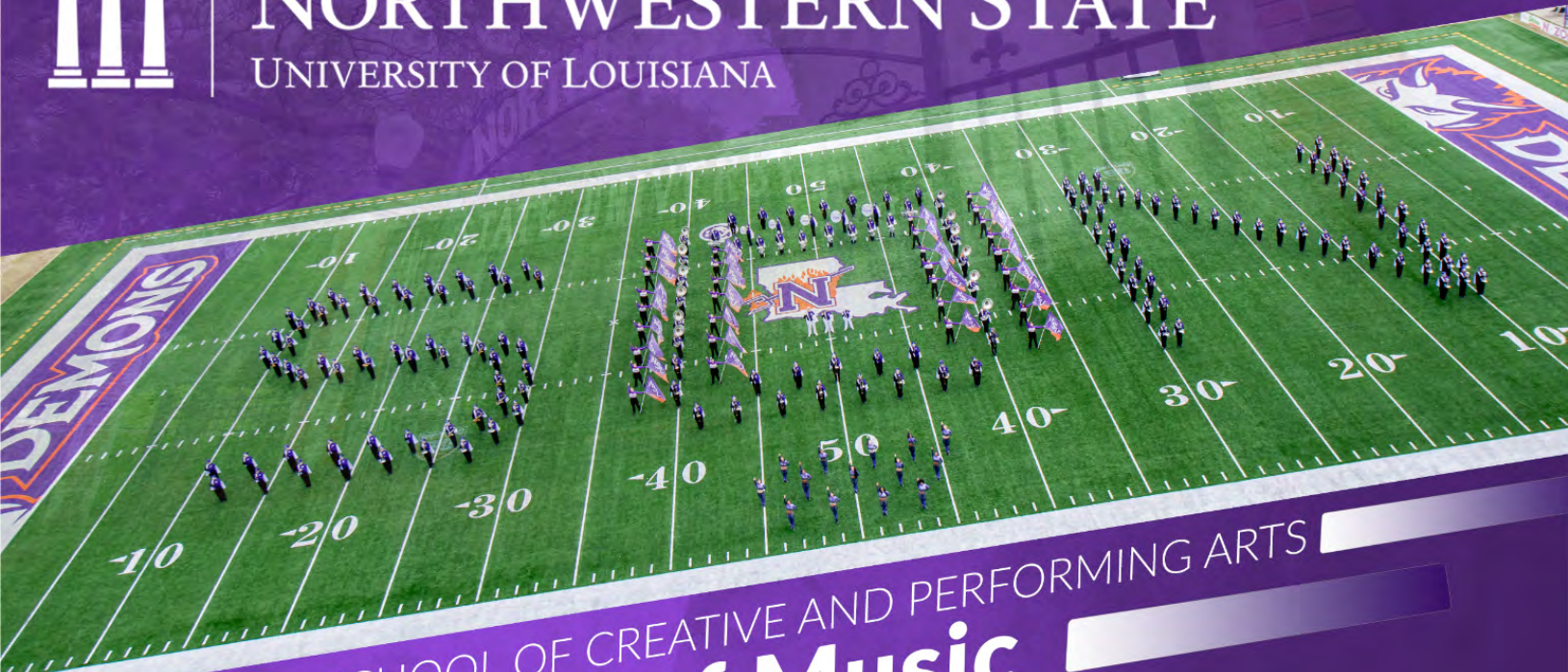


McNeese Performing Arts



NORTHWESTERN STATE

UNIVERSITY OF LOUISIANA



DEAR SCHOOL OF CREATIVE AND PERFORMING ARTS

Department of Music

2024 Fall Events

- | | |
|------------|---|
| Sept. 19 | University Jazz Orchestra |
| Sept. 24 | Natchitoches-Northwestern
Symphony Orchestra |
| Sept. 27 | NSU Percussion Ensemble |
| Oct. 1 | NSU Wind Symphony |
| Oct. 27 | NSU Choirs- Chamber, Orpheus, & Lyrica |
| Nov. 4 | University Jazz Orchestra |
| Nov. 3 | Cane River Singers |
| Nov. 15-16 | NSU Opera Theater- "Die Fledermaus" |

All concerts start at 7:30pm in Magale Recital Hall



The Dear School of
CREATIVE & PERFORMING ARTS



For more information scan QR code
318-357-4522 | www.nsula.edu/music/



NSU's Dear School of Creative and Performing Arts (CAPA) is dedicated to creating a diverse, inclusive and equitable experience for all students, faculty and staff. CAPA will not tolerate racism or discrimination and is committed to

INTRODUCING a new publication



the **Louisiana Musician RETROSPECTIVE**

A History of the Louisiana Music
Educators Association 1936-2023

by **PAT DEAVILLE**

In Pat Deaville's new book on LMEA's history, he has researched **The Louisiana Musician** magazines dating back to 1937 and gathered "firsthand accounts" from the **Ralph Pottle Collection** at Southeastern Louisiana University. Deaville utilizes two approaches to telling LMEA's story. He begins by revealing the history through the lives and contributions of its Hall of Fame inductees. The book's second half provides a detailed record of the Board of Director members with a plethora of news and notes from across nine decades.

Acknowledging that many city, parish, district, regional, and statewide organizations have also impacted music education in our state, Deaville includes information on those organizations that have cooperated directly with LMEA and held Ex-Officio positions within the LMEA Board of Directors. There are hundreds of names included in his narrative. But Deaville dedicated the book to the thousands of Louisiana music educators who are not mentioned by name as they continually sacrificed so much for the betterment of their students, schools, and communities. They are the true heroes and heroines of this story.

Order Form

Use this form to order autographed copies of this book.

Pat Deaville, P.O. Box 6294, Lake Charles, LA 70606, pdeaville3@gmail.com
289 pages, 8/5X11 Paperback, ISBN #978-1-68593-136-0

Please mail me _____ copies at \$20.00 per book plus a shipping fee of \$4.00 for a total of \$ _____

Name: _____ Amount Enclosed: _____

Mailing Address: _____

Inscription Details: _____

YOUR JOURNEY STARTS HERE

MUSIC DEGREES OFFERED:

Music Education Instrumental
Music Education Vocal
Music Industry Studies
Music Liberal Arts
Music Performance



LATECH.EDU/MUSIC



**22
OCT**

TIGERAMA

Tigerama 2024

MORE INFORMATION



LMEA Virtual Assessment

State Solo and Small Ensemble

State Solo and Ensemble Gold Medal Winners

Congratulations to Louisiana's many talented instrumental and vocal students.

Click the link to watch the [VIRTUAL RECITALS](#).

2024 MIDDLE SCHOOL INSTRUMENTAL PERFORMERS

Aston King	Bayou Chicot Middle School
Adyson West	Bayou Chicot Middle School
Vance Collins	DeRidder Jr. High School
Mikayla Mayes	DeRidder Jr. High School
Colin Leblanc	Lockport Middle School
Anna Comeaux	L.J. Alleman
Mike Izaguirre	L.J. Alleman
Jack Vu	L.J. Alleman
Molly Margaglio	L.J. Alleman
Camille Boudreaux	L.J. Alleman
Andrew Miller	L.J. Alleman

HIGH SCHOOL VOCAL PERFORMERS

Parker Sonnier	Barbe High School
Ella Kornfuhrer	Mandeville High School
Riley Gary	Sulphur High School
Kyler Keys	Sulphur High School
Sulphur High School	
Vocal Ensemble	Sulphur High School

HIGH SCHOOL INSTRUMENTAL PERFORMERS

Maria Espinoza	Lafayette High School
Jaden Atkins	DeRidder High School
Grace Lovitt	Rosepine High School
William Long	Lafayette High School
Bryce Labbie	Sulphur High School
Ethan Mire	Lafayette High School
Sam Ashurst	Lafayette High School
Jonas Johnson	Lafayette High School
David Smith	Lafayette High School
Jaedyon Garner	Lafayette High School
Madison Leonard	Central Lafourche High School
Kaia Wilson-Chavez	DeRidder High School
Saxophone Quartet	Central Lafourche High School
Saxophone Ensemble	Dutchtown High School



2025 LMEA Professional Development Conference

January 16-19, 2025
Hilton New Orleans Riverside
2 Poydras Street
New Orleans, LA 70130
(504) 561-0500

SUBMITTING A CLINIC SESSION PROPOSAL:

With the larger conference space at the Hilton New Orleans Riverside, we are able to offer Professional Development Sessions in all divisions on the same days. This will increase the variety of pertinent sessions on each day, affording our attendees a greater selection.

Scheduling. If a proposal is accepted, it will be scheduled on either Friday and Saturday, January 17-18, 2025.

COLLEGIATE CALL FOR RESEARCH:

Graduate students, music educators, and other who have completed relative research are invited to submit a proposal to be included in the Research Poster Session at the 2025 LMEA Professional Development Conference.

HOTEL INFORMATION:

The conference hotel is the Hilton New Orleans Riverside.

The hotel block opens October 1, 2024 and closes December 22, 2024 or when all available rooms are filled.

EXHIBITOR INFORMATION:

Universities and Commercial Exhibits will be located in the St. Charles Ballroom. There are a limited number of prime exhibit spaces in The District.

2025 Exhibit Times – All Exhibitors:

Friday, January 17	10:00 am – 6:00 pm
Saturday, January 18	9:00 am – 5:00 pm
Sunday, January 19	9:00 am – 12:00 pm



2025 CONFERENCE REGISTRATION INFORMATION

Early Bird Registration is available to LMEA members through December 5, 2024. To register at the member price, you will need your LMEA membership number and expiration date. Additional information and registration forms will be added soon.

2025 CONFERENCE LETTER TO SCHOOL ADMINISTRATORS:

Teachers needing a letter of description and support for their administration should [download](#) the Letter to School Administrators.

2025 CONFERENCE SCHEDULES:

We will begin posting the following information as soon as it is available.

- Clinic Sessions, Abstracts, and Presenters' Bios
- Concerts and Other Performances
- Award Winners

FEATURED PERFORMANCES:

Universities perform on a rotational basis. This year's featured division performances are by:

- Southern University Wind Ensemble
- University of New Orleans Choir
- [Natchitoches-Northwestern Symphony](#)
- [University of Louisiana Lafayette Jazz Ensemble](#) – with special guests New York Voices

With our move to New Orleans and the additional space available, LMEA is able to offer additional concert opportunities. This year's concerts will include performances by:

- [LSU Wind Ensemble and A Cappella Choir](#) – with special guests Doreen Ketchens, Hila Plitmann, and Frank Ticheli

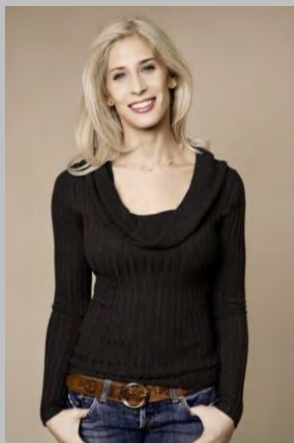
Beginning with the 2026 conference, these additional concert opportunities will require an application process. More information will be coming soon.

[Information needed from all Guest University Performing Ensembles](#) - please complete as soon as possible.

Doreen Ketchens - world famous New Orleans clarinetist who “has been called Lady Louie, Miss Satchmo & The Female Louis Armstrong, to name a few. She has successfully created her own style that blends her classical training with the soul of jazz”.



*LSU Wind Ensemble
& A Capella Choir
With Special Conference
Guests
Doreen Ketchens
Hila Plitmann
Frank Ticheli*



Hila Plitmann - multiple Grammy winning soprano is featured on numerous recordings with world famous orchestras and the New York Times calls “and agile soprano with a radiant sound” and the Chicago Tribune describes as “superb, with an expressive range and communicative power.”

Frank Ticheli - Louisiana native composer who is one of the most prolific and respected composers of wind band music in the world. The Wind Ensemble performs his “Playing With Fire,” which incorporates his history of Louisiana jazz and features an all-star Dixieland band.

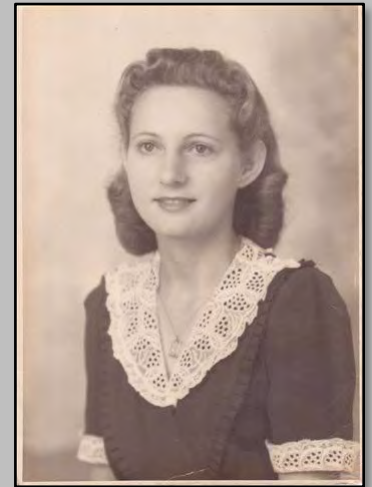
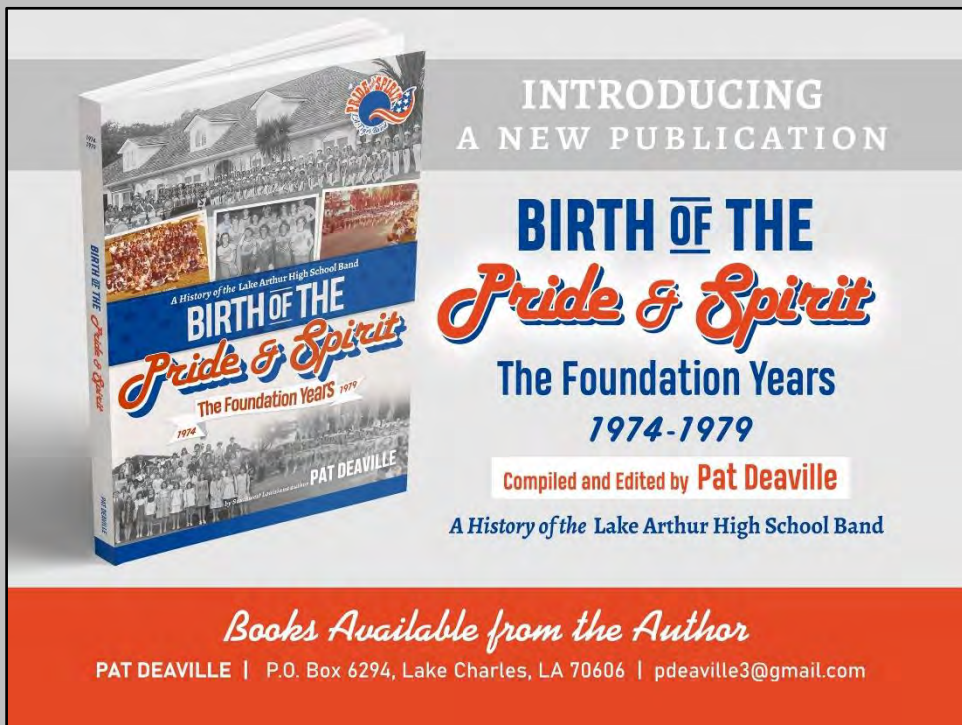


*UL Jazz Ensemble &
New York Voices*



“New York Voices”

“We’re like a four-headed old married couple—we’re just a big family at this point,” Meader says. It’s a combination that has long characterized their thoughtfully programmed recordings and concert performances over the years. The Grammy Award-winning group has produced collaborations with esteemed large ensembles, namely the WDR Big Band (on 2013’s *Live*), and the Bob Mintzer Big Band (2018’s *Meeting of Minds*). Outside of the studio they’ve also worked with Germany’s SWR Big Band, the U.S. Air Force’s Airmen of Note, and the U.S. Army’s Jazz Ambassadors. Individually, the four members are involved in a variety of projects including solo performances and recordings, teaching, writing and arranging. To learn more about the NYV individual members, please visit their websites.



MY MOTHER AS A
TEENAGER IN
LAKE ARTHUR

Colleagues,

On this Mother's Day weekend, my Mom, a Lake Arthur native, would be so proud that I have published a book based on my experiences as director of the Lake Arthur High School Tiger Band.

I arrived in Lake Arthur for my first teaching position fifty years ago (1974). My five-year tenure at the school was as much a learning experience for me as for my students.

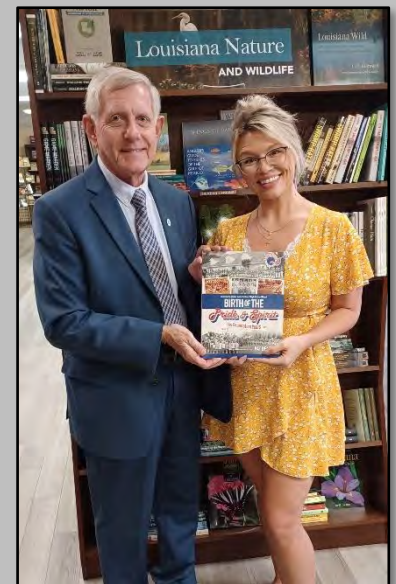
LAHS was a school for 6th through 12th grade. When I began, there were only 7 students enrolled in the single band class offered during the school day. When I left in 1979, there were six band classes with over 200 students enrolled in the band program. We had a new band room, new uniforms, a new culture, and a new name, "The Pride and Spirit Band."

During my tenure, the band earned superior ratings in festivals and competitions with concert, sightreading, and marching performances. One of our proudest moments was representing Lake Arthur while marching down Main Street USA at Disney World in Orlando, Florida.

This incredible story demonstrates what can be done at a small school in a rural town when everyone is willing to work together towards a common goal. I hope the stories, pictures, and lessons will bring back beautiful memories to band alums and inspire young musicians and directors to believe in the power of music, children, and the community.

The book is available at the Seafood Palace in Lake Charles. Copies of the book have also been placed in all four branches of the Jefferson Davis Parish Library.

Pat D.



Pat Deaville with Erika
Hollier of Wise Publishing

Reports from Division Chairs

Band Division Chair

Billy Hochkeppel



Greetings Fellow Music Educators!

I hope you all had a relaxing summer and feel recharged to begin the 2024-2025 school year. Every year, I try to select one or two inspirational quotes to guide my mindset at work and in the classroom. This year I have chosen a quote from a clinic I attended a few years back by Peter Boonshaft, Professor of Music at Hofstra University. He said, “Excitement is the focus on what can go right. Anxiety is the focus on what can go wrong.” As educators, we are constantly faced with changes that affect our day to day. These changes usually cause us lots of *ANXIETY*. Sometimes these changes can seem unnecessary or even counterintuitive. This year, I challenge you to change your mindset with me and try to find “the things that can go right” when facing these changes. I hope it helps you find peace and happiness more frequently and gets you *EXCITED* for the big changes we are going through in LMEA as we move our conference to New Orleans!

Dr. Robert M. Carnochan will be our High School Symphonic Band Clinician this year. He is currently the Director of Wind Ensemble Activities, Music Director/Conductor of the Frost Wind Ensemble, and Professor of Conducting at the Frost School of Music at the University of Miami.

Amanda Drinkwater will be our High School Concert Band Clinician this year. She currently serves as Director of Fine Arts for the Lewisville Independent School District in Texas. Ms. Drinkwater formerly served twenty-three years as a Texas music educator.

The clinician for the inaugural year of the LMEA Middle School Band will be Angela Woo. She is Director of Instrumental Music at John Adams Middle School, in Santa Monica, CA, where nearly 300 students comprise three concert bands and three string orchestras.

You can read their complete biographies at www.lmeamusic.org/all-state/band/

Your District Director will provide you with details regarding both first and second round auditions. Second round auditions will follow the same format as last year featuring a live-monitored, recorded audition to be submitted digitally for evaluation. Use the links below for audition requirement information for both High School and Middle School Auditions.

High School All State Information - <https://lmeamusic.org/all-state/band/>

Middle School All State Information - <https://lmeamusic.org/all-state/all-state-middle-school-band/>

Deadlines for All State Auditions 2024

High School

- **District Deadlines** – District Directors will provide procedural information and set the deadline for receiving checks and student information from schools in their district. This deadline may be *before* the state’s deadline.
- **Saturday, October 5, 2024** – Deadline for completion of all 2nd round auditions and the receipt of all student registrations and audition fees by the district director or his/her designee.
- **Monday, October 14, 2024** (by 11:59 pm) – Results for the All-State Bands and Orchestra Winds will be posted online. *Check ALL lists.* Registration forms for students selected to an ensemble will be opened once rosters are posted.

Middle School

- **District Deadlines** – District Directors will provide procedural information and set the deadline for receiving checks and student information from schools in their district.

Reports from Division Chairs

- **Saturday, November 9, 2024** – Deadline for completion of all 2nd round auditions and the receipt of all student registrations and audition fees by the district director or his/her designee.
- **Monday, November 18, 2024** (by 11:59 pm) – Results for the Middle School All-State Band will be posted online. Registration forms for students selected to an ensemble will be opened once rosters are posted.

I am excited to take on this new role as Band Division Chair. I hope to continue the growth and success that Ronnie Gleason and the other previous Division Chairs have established. Please feel free to reach out with any questions, ideas, suggestions, or challenges you may have throughout the year.

Vocal Division Chair *Stephen Galliano*



Greetings music colleagues,

Welcome to the new school year. The summers seem to go by so quickly! I am looking forward to serving LMEA as your new State Vocal Chairman. If I can be of any assistance to you, please don't hesitate to reach out to me. Since I am new to this position, I ask for your patience and support as I learn and work my way through this year. If I don't have the answers to your questions, I will find the answers to them as quickly as possible. It is my goal as state vocal chairman to continue to unify and bring us all together for the good of our students to help them develop into the best musicians possible. I encourage all new teachers to reach out to the veteran teachers in their district for any help or advice they might need throughout the year.

I attended my first LMEA board meeting recently, and I am very confident and pleased that the entire board is very supportive of the vocal division in our state and welcomes our input and wants us to be represented in all decisions that are made.

As we all begin our preparations, lesson plans, and choosing repertoire for this year, I strongly encourage and recommend that everyone familiarize themselves with the vocal large ensemble performance and sight reading procedures and criteria. There were new procedures and criteria set last school year. After reading through the judges and teacher comments and suggestions about the new procedures, I was pleased to hear that most of the comments were extremely positive. We have done our best to address some of the major concerns and suggestions by tweaking and clarifying some of the procedures, criteria and scripts. Please do not hesitate to reach out to me with any of your concerns about last year's large ensemble assessments. Most confusion and questions can be solved and answered by reading all of the large ensemble procedures and criteria listed in the LMEA handbook.

I would like to form a committee with a representative vocal teacher from every district in our state to touch base throughout the year to discuss any concerns and answer any questions your colleagues in your district might have. If you are interested in joining this committee with me, please email me and let me know.

I want to take this time to publicly thank Sharon McNamara and Michelle Deslattes for going out of their way to help me ease into my new position. Their wisdom and knowledge have helped guide me in the right direction to help make our state remain in the forefront of music education. Thank you also to the committees who have worked so hard to bring us our new sightreading and performance criteria for large ensemble assessment as well as Colette Tanner and the PML committee who have created and are maintaining our own Louisiana PML! And finally, thank you to our LMEA board for their work in putting together what will prove to be an unforgettable LMEA State Conference held in January in New Orleans.

The 2024-25 LMEA High School Mixed Choir and Treble Choir 1st and 2nd round piece is "**Shenandoah**" arr. by Steven Sametz, SSAATTBB, Oxford University Press, 978-0-19-386633-1 (English)

Reports from Division Chairs

I realize the audition tracks for “Shenandoah” on the website are those from our “Covid” year. We are in the process of editing the audition tracks and will get those out to everyone as soon as possible. The learning tracks are still ok to use. Thank you to Sara Bray who is working to get the audition tracks ready for us to use!

Thank you also to Kelsey Nogie and Gabi Hull who are both working on the tracks for the Jr. High auditions.

The 2024-25 LMEA Jr. High Choir audition piece is “**She Sings**” by Amy Feldman Bernon - Heritage Music Press (SATB)

I am pleased to introduce our All-State Honor Choir clinicians for this year’s LMEA conference.

- ❖ High School Mixed Choir - Dr. Lynne Gackle. Dr. Gackle is Professor of Ensembles and conducts Baylor Bella Voce, Baylor Concert Choir, teaches choral conducting, choral literature and serves as the Director of the Ensemble Division.
- ❖ High School Treble Choir - Dr. Jessica Nápoles. Dr. Nápoles is Professor of Choral Music Education at the University of North Texas.
- ❖ Jr. High - Dr. Jamie Hillman. Dr. Hillman is a Canadian and American musician, active as a conductor, singer, pianist, music educator, and composer-arranger. He is currently on the faculty at the University of Toronto where he directs the MacMillan Singers and leads the M. Mus. and DMA programs in Choral Conducting.

Please read through the following information carefully! Please contact your district director for any details regarding these dates and deadlines.

- **Tuesday, October 1, 2024:** New Orleans Hilton Riverside Hotel block for LMEA opens.
- **Saturday, October 5, 2024:** 2nd Round High School All-State Audition Deadline
- **Wednesday, October 9, 2024:** Postmark deadline for checks for 2nd round auditions.
- **Saturday, October 12, 2024:** Judging of submitted High School auditions.
- **Monday, October 14, 2024:** Audition results posted by 10:00pm.
- **Monday, October 28, 2034:** Registration for High School All-State choir participation deadline.
- **Saturday, November 9, 2024:** Jr. High All-State Auditions deadline.
- **Wednesday, November 13, 2024:** Postmark deadline for Jr. High All-State choir audition checks.
- **Saturday, November 16, 2024:** Judging of submitted Jr. High auditions.
- **Monday, November 18, 2024:** Jr. High Audition results posted by 10:00pm.
- **Thursday, December 5, 2024:** Early bird LMEA Conference teacher registration closes.
- **Friday, December 6, 2024:** Registration for Jr. High All-State choir participation deadline.
- **Sunday, December 22, 2024:** New Orleans Hilton Riverside Hotel block for LMEA closes.
- **January 16-19, 2025:** LMEA Conference and All-State performing groups rehearsals and concerts. New Orleans Hilton Riverside Hotel.

I close with a “wish you go well” and this quote written by Vaughan Fleischfresser:

“Being a music teacher can be incredibly difficult. Always having to justify our place in the curriculum, our place in schools, our budget, our resources, our time, our existence. It’s all made worth it when you realize the indelible mark we leave on the lives of young people.”

Reports from Division Chairs

Jazz Division Chair

Doug Stone

I hope your school year is off to a fantastic start! At the beginning of the school year, and many times throughout the entire school year, music educators are sometimes so overwhelmed with paperwork, organizational responsibilities, and emails that it can feel like teaching music is third, fourth, or fifth on the daily to-do list! As a word of encouragement, I want to share an observation I have made. In almost every interview I read or listen to with a legendary jazz musician, from Miles Davis to Maynard Ferguson, a reference is made to music teachers being one of the first, if not the very first, inspiration for these world-renowned musicians. YOU are those inspiring teachers. YOU make a difference in the lives of all of your students every day. Keep doing what you are doing and enjoy the fruits of your labor. Thank you for all you are doing for young musicians in Louisiana.



The 2024-2025 jazz audition materials for both middle and high school all state jazz ensembles are available on the LMEA website, including jazz scale sheets for each instrument, prepared etudes, and the play-along mp3. Please visit the LMEA Middle and High School All-State Jazz Ensemble webpages, check out all the materials and resources, and share with students. The posted audition materials are not only useful for our All-State Jazz Ensemble adjudicators who will determine which students will participate in the middle and high school groups, they are also wonderful learning resources for students of all ages and ability levels. Don't hesitate to invite all interested students to learn the etudes, play with the tracks, learn and grow as jazz players, and of course audition!

All-State Jazz Ensemble auditions will be recorded by district. District directors will communicate submission deadlines.

For **High School All-State Jazz Ensemble** - the final deadline to submit recordings to LMEA is Saturday, September 28, 2024. In most cases, district directors will have deadlines that allow time for final submission to LMEA by September 28, 2024.

For **Middle School All-State Jazz Ensemble** - the final deadline to submit recordings to LMEA is Saturday, November 2, 2024. In most cases, district directors will have deadlines that allow time for final submission to LMEA by November 2, 2024.

The Louisiana Association for Jazz Education (LAJE) has helped facilitate the recorded audition process. The LMEA Jazz Division owes a debt of gratitude to the LAJE board for their tireless efforts in working with LMEA and promoting jazz education in Louisiana. Please visit the LAJE website www.lajemusic.com and follow them on Instagram @louisianajazzeducators for updates during the conference.

If you have any questions about the audition process or anything else having to do with LMEA jazz, do not hesitate to email me at jazzdivision@lmeamusic.org.

High School All-State Jazz Ensemble Clinician *Clarence Hines*:

Clarence Hines is an accomplished trombonist, composer, arranger, and educator with a diverse musical career. He has performed alongside internationally acclaimed artists and groups including Slide Hampton, Bob Brookmeyer, John Pizzarelli, David Sanborn, Maceo Parker, Diane Schuur, Bobby Caldwell, Johnny Mathis, Josh Groban, The Temptations, The O'Jays, The Harry James Orchestra, Rochester Philharmonic Orchestra, and the Jacksonville Symphony Orchestra. Clarence has graced stages at renowned music festivals such as the North Sea Jazz Festival, Rochester International Jazz Festival, Jacksonville Jazz Festival, and at venues around the world. In addition to being a seasoned performer, Clarence is also a highly respected composer and arranger whose arrangements have been recognized by



Reports from Division Chairs

DownBeat magazine. His music has been performed and recorded by both professional and collegiate ensembles around the world. His recent works were premiered at prestigious venues such as the Tanglewood Music Festival, Lincoln Center for the Performing Arts, World Association of Bands and Ensembles (WASBE) Conference in Spain, and the Strings Music Festival in Colorado.

Clarence currently serves as the Director of the School of Music at the University of North Florida, where he also is an Associate Professor of Jazz Studies. Clarence has previously taught at the Eastman Summer Jazz Studies and the Tritone Fantasy Jazz Camp. He is currently a jazz faculty member in the Birch Creek Music Performance Center's Summer Music Academy. Clarence is an artist/clinician for Conn-Selmer and he plays C.G. Conn and King Trombones exclusively.

Middle School All-State Jazz Ensemble Clinician *Bobby Keating*:



Robert Keating is a highly accomplished music educator and professional musician, currently serving as the Music Director at Gulliver Preparatory in Miami, Florida. With an impressive tenure of 35 years at Gulliver Prep, he has made a significant impact on the school's music program.

In recognition of his outstanding contributions to the field of music education, Robert was inducted into the prestigious Phi Beta Mu honorary band directors fraternity in 2008 and the American School Band Directors Association in 2012. He has also served as the FBA District Chair and currently sits on the Jazz Committee for the Florida Bandmasters Association, showcasing his commitment to advancing music education in the state. In addition, he was selected to conduct the FMEA All State Middle School Jazz Band which performed at the 2024 All State FMEA Convention.

Robert's expertise and passion for music education have led to numerous speaking engagements and workshops. He has been invited to present at the Florida Music Educators Association (FMEA) five times and the Jazz Education Network (JEN) conferences twice, sharing his knowledge and insights with fellow educators. Notably, Robert was chosen to conduct the FMEA All State Middle School Jazz Band, which showcased at the 2024 All State FMEA Convention.

Under Robert's leadership, the Gulliver Prep Jazz Band has achieved remarkable success. They have been recognized with "Outstanding Performance" Awards from DownBeat Magazine for three consecutive years (2019-2021). Additionally, the band had the honor of performing at the prestigious 71st Midwest Band Clinic in 2017 and was invited to perform at JEN the same year, solidifying their reputation as a top-tier ensemble. The Gulliver Prep bands, under Robert's guidance, have consistently received Superior ratings at the Florida Bandmasters Association's music performance assessments for the past three decades, a testament to his dedication to excellence in music education.

Orchestra Division Chair

Katrice LaCour

Welcome back everyone!

What an exciting time to be a music educator in our state. As we begin this school year many obstacles will be faced and conquered in the quest to educate young musicians. L.M.E.A. is constantly creating opportunities to encourage music teachers from all genres and grade levels to get involved. This is never more apparent with the move of our State Conference to New Orleans and the creation of the first Middle School All-State Orchestra Ensemble. This ensemble will be in addition to our existing High School All-



Reports from Division Chairs

State Orchestra. I encourage all orchestra teachers familiar and new to our audition process to visit the L.M.E.A. website and read the rules, regulations, and deadlines for the audition process. Simply go to <https://lmeamusic.org/> and click the All-State Button. Select High School Orchestra or Middle School String Orchestra button. This year's Middle School All-State conductor is Bob Gillespie from Ohio State University. Bob Gillespie is Ohio State University Emeritus of string education/string pedagogy. I'm also pleased to announce our High School All-State Orchestra Conductor is Douglas Droste. A dedicated teacher, Droste is Director of Orchestral Studies at Baldwin Wallace University Conservatory of Music.

All-State Auditions

MIDDLE SCHOOL

Middle School All-State String Orchestra audition recording deadline is midnight November 2, 2024, and the tryout fee is \$15.00. Any audition recordings which are not submitted on time will not be accepted. The audition requirements and forms are published in the LMEA Handbook and can be found online at <https://www.lmeamusic.org/>. It is the Directors responsibility to make sure every audition is recorded. We are currently using SET I for this year's audition.

HIGH SCHOOL

This year the All-State Orchestra audition recording deadline is midnight September 30, 2024, and the tryout fee is \$15.00. Any audition recordings which are not submitted on time will not be accepted. The audition requirements and forms are published in the LMEA Handbook and can be found online at <https://www.lmeamusic.org/>. It is the Directors responsibility to make sure every audition is recorded. We are currently using SET I for this year's audition.

In closing I cannot highlight the importance of reading the rules for eligibility and deadlines. I wish your students success as they try out for this year's All State Orchestra Ensembles and look forward to seeing you in New Orleans at the LMEA Conference. I would also like to thank all directors for their continued support over the past twelve years.

NAfME Collegiate Division Chair

Edward McClellan, PhD



Welcome to the 2024-2025 academic year! As the summer months are quickly moving to fall, I hope that you've had time to rest, relax, and rejuvenate for the coming academic year. The Collegiate Division has planned a variety of events and activities for the coming year!

As Louisiana State Chair of the *Society of Research in Music Education* (SRME) and Louisiana State Chair of the *Society of Music Teacher Education* (SMTE) for the LMEA Board, I share the following information.



2024 NAfME Music Research, Teacher Education, and National Conference

The 2024 Biennial NAfME Music Research and Teacher Education Conference is the premier national event fostering and facilitating collaboration between music education practitioners, researchers, and program leaders across the spectrum of PreK-12 and higher education. The NAfME National Conference combines three NAfME events: the NAfME Biennial Music Research and Teacher Education Conference, the NAfME National PreK-12 Conference, and the NAfME All-National Honor Ensembles.

Reports from Division Chairs

The 2024 conference will take place at the Westin Peachtree Plaza in Atlanta, Georgia, on September 25-28, 2024. Information about registration can be found at <https://nafme.org/event/2024-nafme-biennial-music-research-and-teacher-education-conference/>



Society for Music
Teacher Education

The *Society for Music Teacher Education* (SMTE) was founded in 1982 as one of the [Societies](#) of the *National Association for Music Education* (NAfME). Membership is open to all NAfME members with an interest in music teacher education. SMTE holds a biennial Symposium on Music Teacher Education, and supports research and creative activity about music teacher education. **CURRENTLY, PLANS ARE UNDERWAY FOR MEETINGS DURING THE 2024 NAfME MUSIC RESEARCH, TEACHER EDUCATION, AND NATIONAL CONFERENCE IN ATLANTA IN SEPTEMBER.**

An important feature of SMTE is its *Areas for Strategic Planning and Action*, or ASPAs, which develop and implement action plans related to critical issues in music teacher education. SMTE Areas for Strategic Planning and Action include:

- ✓ Critical Examination of the Curriculum
- ✓ Cultural Diversity and Social Justice for Music Teacher Education
- ✓ Music Teacher Educators: Recruitment, Preparation, and Professional Development
- ✓ Music Teacher Health and Wellness
- ✓ Music Teacher Socialization
- ✓ Policy
- ✓ Professional Development for Music Teachers
- ✓ Program Admission, Assessment, and Alignment
- ✓ School/University Partnerships
- ✓ Supporting Beginning Music Teachers
- ✓ Teacher Evaluation
- ✓ Teacher Recruitment

2024-2025 LDOE Mentor Waiver Application to Mentor Resident Teachers

At the April BESE meeting, the Board approved a waiver for the Mentor policy for the 2024-2025 school year. Mentor teacher waivers will be granted on a case-by-case basis through the application process established by the LDOE and at no fee. The waiver will be issued by the LDOE for educators highly recommended by the Mentor's principal and who possess one or more of the following qualifications:

1. Two years of Highly Effective Compass ratings;
2. National Board Certification;
3. Statewide or national distinction for excellence in teaching;
4. Experience as a TAP mentor, master teacher, executive master teacher, or certified TAP evaluator;
5. Content leader experience, as evidenced by participation in Content Leader training or redelivery of professional development; or
6. Master's or doctorate in education and exemplary experience hosting student teachers.

The 2024-2025 Mentor Waiver Application and becoming a Mentor Teacher can be found at <https://www.louisianabelieves.com/resources/library/louisiana-mentor-teachers>. Mentor Waiver

Applications must be created by the system leader responsible for resident placement and/or Mentor recruitment and support. Please contact believeandprepare@la.gov with any questions

Join the Louisiana Collegiate Music Education Member Network

Collegiate students are encouraged to complete the following survey to get on the Louisiana Collegiate Network. This information will be used to connect College Music Education Students with other music education students

Reports from Division Chairs

at other Universities across Louisiana. The network will be active in connecting Collegiate NafME Chapters and establishing communication among music education students and faculty. Please use this QR Code to get started:



The NafME Collegiate Summit

This year's NafME Collegiate Summit will be during the 2025 LMEA Conference! In addition, Collegiate members are welcome to attend all professional development sessions and all-state rehearsals and performances throughout the conference.

With three days of sessions and professional development, the Collegiate Summit is a collaborative effort among the Louisiana Music Educators Association, university faculty, K-12 music educators, and retired music teachers to focus on the needs of undergraduate music education majors and beginning music teachers. The 2025 NafME Collegiate Summit provides a variety of professional development sessions for college students, and beginning and veteran music teachers.

Special Networking Session for All Collegiate Members

Collegiate members from all college/university music education programs across Louisiana are invited to meet their colleagues and peers from other universities at this general session. Collegiate members will participate in this informational and networking session. Share Best Practices of Leadership, Communication, & Networking among your peers and colleagues in the music education field.

Collegiate Pre-Registration Rates

Collegiate Music Education Summit Participants should take advantage of conference pre-registration rates in planning to take part in this event. LMEA Conference "Pre-registration" for Collegiate Members is \$30; Pre-registration forms are available on the LMEA website <https://lmeamusic.org/2025-lmea-professional-development-conference/>

Graduate Student Research Showcase

The **Graduate Student Research Showcase** will feature 15-minute presentations by Masters and Doctoral (PhD) students from Louisiana colleges and universities currently writing their theses or dissertations. Presentation can be on works in progress or research near completion. Each candidate will make a 10-minute presentation followed by approximately 5-minutes of Q & A from the audience.

RECOMMENDATIONS FOR GRADUATED STUDENT RESEARCH PRESENTATIONS SHOULD BE MADE BY THE STUDENT'S GRADUATE ADVISOR BY OCTOBER 16, 2024.

Annual Music Teacher Education Breakfast

Music Education Faculty at colleges and universities across Louisiana are invited to attend this informal BYO breakfast banquet and meeting as part of the LMEA Conference. This social gathering of Music Teacher Educators is an opportunity to connect with other professionals, develop collegiality, exchange ideas, share in common practices, and examine ways to enhance music teacher training programs in Louisiana.

Research Presentation Session

The Louisiana Music Educators Association is pleased to announce a call for research reports for presentation at a Research Poster Session at the LMEA Conference. University faculty, graduate students, and classroom music

Reports from Division Chairs

educators are invited to submit proposals for presentation during this session. Authors whose reports are selected will present their research during a research poster session in which interested music educators can learn about the research and discuss applications to music teaching and learning with the authors. Posters will be placed for viewing during the conference with formal presentation by authors.

In Closing

In closing, I look forward to a great year! I look forward to working together, being proactive and resilient, and exploring avenues for innovation during these extraordinary times! Please feel free to contact me should I be of assistance to you!

Elementary Division Chair *Keith James*

Greetings from Elementary!! I am hoping that your summer was restful and invigorating and your classes are off to a fantastic start! It's always fun to think about how teachers spend their summers. Some travel and explore. Some fine tune their craft and some just relax! Many (like myself) do a bit of each. Summer is a great time to "recharge" your teaching batteries and there's no wrong way to do it.



This summer I went to JSU in Mississippi to complete my level 2 training in Orff-Schulwerk. I have so many new songs, games, and activities to share with my students. No matter the course, it's always rewarding to work with other musicians and educators to perfect your craft. Not only should we challenge our students but we should also challenge ourselves to be the best we can.

Preparations continue for our 2025 conference in New Orleans. We have had a record number of applicants apply to teach sessions for the elementary level! Our featured presenter is Robert Amchin. Dr Amchin is a master teacher and music education professor emeritus from the university of Louisville. His sessions will focus on Programs and Process. To quote him; "Using fun child-centered teaching models, we will actively learn a variety of teaching strategies that engage children to sing, dance, improvise, and play using discovery-based practices. We will also explore ideas for programming and theme-based general music processes as well." Individual sessions will focus on instruments, dance, and themes when creating and planning a program for your students.

See you in New Orleans!

Guitar Ensemble *Dr. Greg Robin, Committee Chair*



*The guitar division is excited to have **Dr. Chad Ibison** as our 2024 All-State Guitar clinician.*

Dr. Ibison has accumulated ten first-place awards among his eighteen top-prize wins at international guitar competitions including the Guitar Foundation of America, JoAnn Falletta Concerto Competition, and Boston's New England Conservatory Guitarfest.

Dr. Ibison performs regularly as a soloist, a member of the Ibison Guitar Duo, and the Austin Guitar Quartet. He is an Assistant Professor at Austin Community College and maintains an active private studio.



Reports from Division Chairs

DEADLINES for 2024-25:

District Deadlines – District Directors will provide procedural information and set the deadline for receiving checks and student information from schools in their district. This deadline may be *before* the state's deadline.

- **Saturday, October 5, 2024** – Deadline for completion of all auditions and the receipt of all student registrations and audition fees by the district director or his/her designee.
- **Monday, October 14, 2024** (by 11:59 pm) – Results for the All-State Guitar Ensemble will be posted online. Registration forms for students selected to an ensemble will be opened once rosters are posted.

As we begin our fourth year, there is excitement for New Orleans. We hope the new venue and professional development opportunities will attract many students and educators statewide.

Public Relations Chair

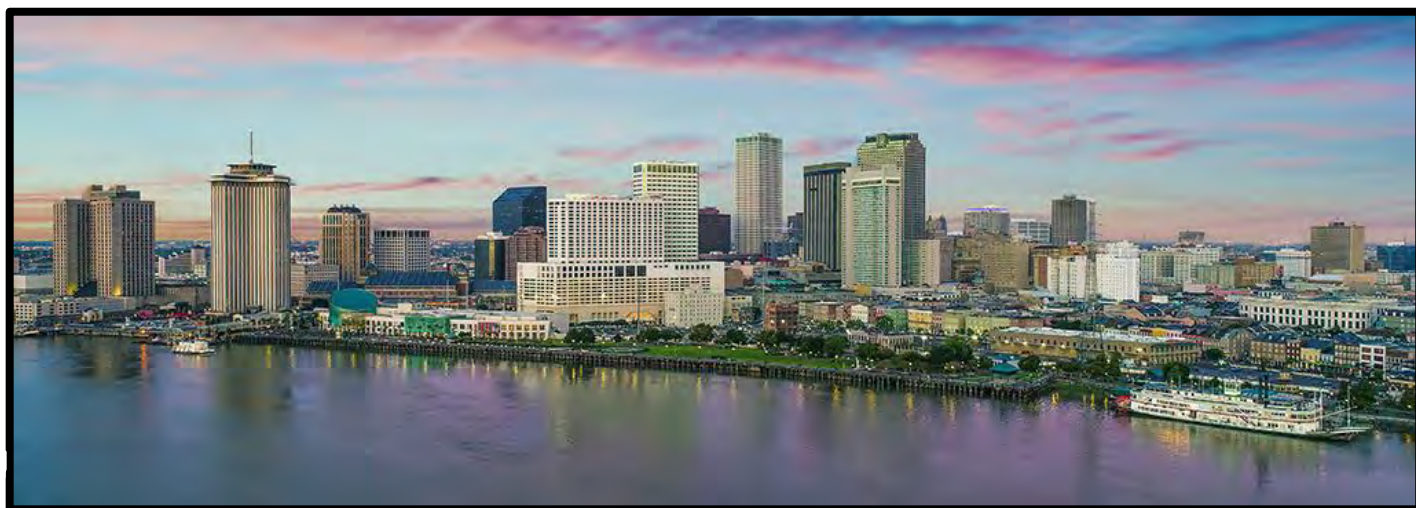
Joshua Stearman

Another new school year, and another year with Public Relations and Exhibits for LMEA—and what a year it's set to be for LMEA and all of our teachers and students! We have TWO major new developments this year to better serve our students and membership: the new conference in New Orleans, and the newly formed LMEA State Marching Championship!

For the **State Championship**, dozens of bands from across the state will now be able to go to their administrations and communities, and proudly announce that they are going to be attending the State Marching Band Championship! We're also excited to welcome more band programs into the fray by incorporating traditional-style bands into the championships, in a move that is among the leaders of state organizations across the country, and that has attracted interest (and spurred further conversations) in states like Texas and Tennessee! We are also excited by the attention the event is garnering from local government officials in Lake Charles!



For the **New Orleans Conference**, we are hard at work solidifying our exhibit hall, including several new vendors who have not been to Louisiana before! If you have a recommendation for a vendor you would love for us to reach out to, or you have a connection with a business or organization who may want to exhibit with LMEA, please send that information to me at jstearman@lmeamusic.org It's a big year for LMEA, and I hope it's a great year for you!



Reports from Division Chairs

Handbell Ensemble

Greig Ashurst, Committee Chair



Resonating Excellence: The Inaugural Louisiana All-State Handbell Ensemble

As the state conference moves to New Orleans to start a new chapter of musical excellence, LMEA announces the birth of the Louisiana Music Education Association **All-State Handbell Ensemble**. This inaugural ensemble is not just a group; it's a movement. It is a new and fresh approach to alternative ensembles. The mission is clear: to provide an unparalleled ensemble experience that educates, inspires, and motivates. It's about modeling musical excellence and fostering a lifelong love for the art of handbell ringing. It's about encouraging schools to embrace this art form and hopefully adding handbells ensemble to their musical curricula.

The Audition: LMEA All-State Handbell Ensemble 2024 – 2025

There is a single live monitored audition for the All-State Handbell Ensemble. Auditions will be *video* recorded by the District Director or his/her designee and submitted as an mp4 file to the All-State Handbell Chair for adjudication. Students in 8th-12th grades may audition.

Eligibility:

- Students auditioning must be in 8th – 12th grade.
- Students auditioning must be enrolled in a **Louisiana-accredited high school** and must be an active member of that school's handbell program. Click for a list of [Nonpublic Accredited Approved Schools 2023-24](#). Students' ensemble directors must be current full LMEA members.
- In a situation where there is no handbell ensemble in a school, the student must be enrolled in a **Louisiana-accredited high school** and certified by the eligible music teacher at that school or a private teacher who is an LMEA member.
- District directors will verify that teachers of all students participating in these auditions are current members of LMEA.
- Students are eligible for membership in only one All-State ensemble.

Audition Material: The audition includes six (6) exercises that use a variety of handbell techniques.

[2024-2025 Audition Material](#) If there are questions about symbols and how to correctly ring them, information is available on the [Handbell Musicians of America](#) website:

- [Getting Started](#)
- [Handbell and Handchime Notation Guide](#)
([SCROLL DOWN ON THIS PAGE](#))

Results:

- **Adjudication:** The judges (music educators from around the country with handbell programs in their schools) will assess audition performances based on technique, tone/timbre/balance, interpretation, accuracy, and other general performance factors. (See attached [rubric](#))
- **Audition Results:** Results will be posted on this website as soon as possible once they are finalized for all ensembles. For 2024-25, results will be posted on Monday, October 14, 2024 after 7:00 pm.
- **Ranking Scores:** After adjudication, students will be ranked according to their final scores.
- Number of Performers: 11-26 musicians
 - 11 Musicians minimum per 3-Octave Ensemble
 - 13 Musicians per 5-Octave Ensemble
 - Ideally, there would be a double ensemble
 - A partial second 3-Octave Ensemble is possible

Please feel free to contact Greig Ashurst, Handbell Division Chair handbells@lmeamusic.org or 337.344.4200



Click for [information](#) about the **Ambassadors in Blue Marching Festival**:

- Ensemble classification based on size
- Trophies for Superior, Festival Grand Champion, and much more
- Cost – \$250
- **Registration** (Deadline is Sept. 19, 2024)
- Contact information:
atheall@beau.k12.la.us



Click for [information](#) about the **Golden Tornado Marching Festival**:

- Ensemble classification based on ensemble size
- Trophies for Superior, Festival Grand Champion ... and much more
- Cost – \$250
- **Registration** (Deadline Oct. 1, 2024)
- Contact information:
mathew.mcmillen@cpsb.org

Bandboree	September 30th	District VIII - Parkway High School	Mark Minton	mark.minton@bossierschools.org
Bandboree	September 28th	Hosted by Lafayette High	Ronnie Gleason	wrgleason@lpssonline.com
Camellia Bandboree	September 28th	Northshore High School	Joshua Stearman	Joshua.Stearman@stpsb.org
Vermillion Parish Marching Festival	October 5th	North Vermillion High School	Eric Gaudet	eric.gaudet@vpsb.net
Pickering Early Bird Marching Festival	October 5th	Pickering High School	Roland Smith	roland.smith@vpsb.us
Clash at the Coliseum	October 12th	Lakeshore High School	Craig Byers	craig.byers@stpsb.org
Dutchtown Marching Festival	October 12th	Dutchtown High School	Sheily Bell	sheily.bell@apsb.org
Many High School	October 12th	Many High School	Scott DuBose	deboses@spsb.la
Ark/LaMiss Regional	October 12th	Don Shows Field-West Monroe	Jason Howard	jhoward@usbands.org
DeRidder Marching Festival	October 19th	DeRidder High School	Aaron Theall	atheall@beau.k12.la.us
Pride of Cajunland Marching Festival	October 19th	New Iberia Senior High	Kelly Landry	kelandry@iberiaschools.org
Sulphur Marching Festival	November 2nd	Sulphur High School	Mathew McMillen	mathew.mcmillen@cpsb.org
LMEA State Marching Band Championship	November 4-7	McNeese State University	Scotty Walker	swalker@lmeamusic.org

STATE MARCHING CHAMPIONSHIPS

NOVEMBER 4 – 7, 2024

Reports from the LMEA Board

District I

Robbie Freeman



Greetings from District I!

I hope you all have had a great summer. Now it's time to get back into doing what we love, which is teaching students through music!

We have had a number of positions change in this district and we welcome some new faces as well as some familiar ones as well!

Elementary Music:

1. LeAnn Hammons – **Shady Grove, Swayze and Robinson Elementaries**
2. Crystal Stockstill – **Lakeshore and Jack Hayes Elementaries**

Vocal Music:

3. Rebecca Owens – **Caldwell Parish Middle/High School**
4. Thomaneisha Little – **Neville High School**
5. Mallory Spradling – **Darbonne Woods Charter School**

Band:

1. Ethan Harkins – **Ouachita Junior High School**
2. Marie Menefee – **West Ridge Middle School**
3. James Hodge – **Good Hope Middle School**
4. Mallory Spradling – **Darbonne Woods Charter School**

We wish them great success as they begin this year.

We also bid a fond farewell to two great educators, Amanda Terry as she retires and Robin West as she begins a new position in Arkansas.

“Today I will give all I have, for anything I have kept will be lost forever”

I'm available to help in any way I can! My email is freeman@opsb.net and my cell is 318-547-0220

District II

Aleisa Hudlow



Greetings from District II!

Welcome back to another year of making music with our students! While we always enjoy our summer breaks, the school year provides memories and experiences for us and our students that make it worth getting up and heading into work every day. Our students are why we do what we do and I for one am excited to be back in the classroom with them!

First, I am so excited about our new conference in New Orleans! This is shaping up to be a truly amazing conference that will be enriching for both students and educators! As a middle school teacher, I am so grateful for

Reports from the LMEA Board

the opportunities now provided to our middle school musicians through our Middle School All-State ensembles. I believe this will be a memorable experience and I hope to see you all there!

District II directors can find our event dates on the LMEA website (lmeamusic.org) and our district website (districtii.org). If you are not on my email list, reach out to me to make sure you get added! I send out detailed information throughout the year prior to each event. I want to make sure you all have the information you need to be able to participate in LMEA events.

Welcome to our new directors! I hope you sign up for the LMEA Mentorship Program so you can find guidance from experienced directors in the state. I know I am constantly reaching out for advice even though I've been doing this a while, but I definitely needed the guidance when I was starting out. I also hope our experienced directors sign up to be a mentor. Sign-ups and information for the Mentorship Program can be found on LMEA's website.

Finally, I hope that you all make time for yourselves throughout the year. What we do is needed and valuable, but it can also be exhausting and stressful. Your students need you at your best, so be sure to take care of yourselves! It's okay to unplug from the job when needed, and you'll be a better teacher for it!

I wish you all a wonderful year! Be sure to reach out if you have any questions, concerns, frustration, or joy. We're here to listen and help!

District III ***Bailey Lanier***

Greetings from District III!

I hope that your school year is off to a successful beginning! Some years may feel more daunting than others - perhaps you're experiencing a new classroom, new administration, or even a new job. No matter the situation, nor the uncertainty, always remember to lean on your colleagues, especially those that share the brotherhood and sisterhood of music.



All-State audition season is in full swing, with high school band, choir, guitar, jazz, strings, and handbell auditions taking place in September. Later in October, the middle school counterparts of most of these ensembles will make their All-State debut with their audition processes. Again, a new experience - but this time, something new and exciting for you AND your students! If you are unfamiliar with any of the pertinent audition info and dates and have not received an email from me, please do not hesitate to reach out.

Although it feels like it's a world away, Large Ensemble Assessment dates are set. Vocal Assessment will take place on March 17th & 18th at Angelle Hall on UL Lafayette's campus, and the following week will be Instrumental Assessment, March 24th through the 28th, at the same location. Don't let me alarm you, there is plenty of time until March!

Whether your students are expressing their talents through their voice or an instrument, I wish you all the best in this new school year. If there is any way that I can be of assistance, please don't hesitate to contact me.

**"The best preparation for tomorrow
Is doing your best today." – H. Jackson Brown Jr.**

Reports from the LMEA Board

District IV **Ryan Benoit**



Welcome Back!

I hope your summer was just what you needed to recharge. The start of a new school year is always exciting to me even after...let's just say many years.

Thank you for trusting me to be your new District IV Director. I hope to build upon the great work by previous directors and help us navigate all the exciting changes LMEA is undergoing.

Speaking of changes, keep up with all the happenings by bookmarking the District IV and LMEA websites, PARTICIPATE by attending meetings and volunteering, and lastly, attend the conference this January in New Orleans.

Please complete the [form](#) on the website to add your contact information and receive regular updates.

We are fortunate to have some great leaders in District IV. These outstanding educators are a great resource.

- Orchestra Chair - Chris Frazier
- Vocal Division Chair - Cassi Doherty
- Jazz/Guitar Chair - Partick Bordelon
- District Honor Band Association President - Edwin Hirst

District V **Aaron Theall**



Another school year has begun! I hope that each of you have had a successful beginning to the school year and have gotten your procedures in place to ensure continued success moving forward. Through our teachings, our students will not only learn about music and musical concepts, but they will also learn valuable life skills such as discipline, hard work, teamwork, punctuality, posture, resilience, and many others. It has been my pleasure to serve as the District V director for the LMEA board of directors and I look forward to continuing to work for this fantastic district for this school year. The tradition of District V's involvement and success in Solo and Ensemble has continued with many successful events including multiple students being selected for the LMEA virtual recital that can be found on the website.

I look forward to seeing everyone in January at the LMEA conference. This will be our first conference in New Orleans, so we hope you can join us for some great clinics, ensembles, and vendors, including our keynote speaker Dr. Tim Lautzenheiser. It is also a great place to connect with fellow directors from across the state. If you have any questions, please feel free to contact me at the email listed below.

districtv@lmeamusic.org

"If you are working on something exciting that you really care about, you don't have to be pushed. The vision pulls you." — Steve Jobs

Reports from the LMEA Board

District VI

Telly S. Higgins



Hello everyone from District VI!

I hope you all have had a great summer. Now it's time to get back into doing what we love, which is teaching music education (band, choir, orchestra, guitar and handbells). We have had many positions change in this district and we welcome some new faces as well as some familiar ones to our district.

Vocal Music

- Kathryn Matherne - The Willow School - New Orleans, LA

Strings

- Carl LaCoste - Benjamin Franklin High School - New Orleans, LA

Band

- Kendall Griffin - President Chalmette - Elementary School - Chalmette, LA
- Kim Kessler - Vice President - St. Clement of Rome - Metairie, LA
- Nicole Lawnicki - Treasurer - Kenner Discovery - Kenner, LA
- John Phelan - Web Manager - Haynes Academy - Metairie, LA

Committee Chairs For Band

- Dominic Caronna - Senior High All-State Chair - Brother Martin HS - New Orleans, LA
- Ronald Totoro - Junior High All-State Chair - Kenner Discovery - Kenner, LA
- Brenda Castillo - Program Manager - Dominican HS - New Orleans, LA
- Kaleb Lambert - Operations Supervisor - Chalmette HS - Chalmette, LA
- Marching Band Assessment - TBA
- Brandon Miranda - Elementary Honor Band - Jefferson Elementary School -
- Nicole Lawnicki - Elementary Honor Band - Kenner Discovery - Kenner, LA
- Samuel Tyree - Junior High Honor Band - John Adams - Metairie, LA
- Ronald Totoro - Junior High Honor Band - Kenner Discovery - Kenner, LA
- Nic Broussard - Senior High Honor Band - Archbishop Chapelle HS - Metairie, LA
- John Phelan - Senior High Honor Band - Haynes Academy - Metairie, LA
- Jeremy Williams - Junior/Senior High Honor Jazz Band - Marrero Middle - Marrero, LA
- Benjamin Bucholtz - Junior/Senior High Honor Jazz Band - Riverdale HS - Metairie, LA
- Terry R. Meilleur - Audio/Sound for District 6

Website: <https://www.district6.band/home>

District VIII

Michele DesLattes



Over the last couple of weeks, I have had the honor to stand before the music teachers in District VIII and share with them amazing things that LMEA has to offer for the 2024-25 school year. Specifically, I was able to highlight the additional ensembles added to this year's Professional Development Conference in New Orleans. I pointed out the many resources available to them on the state website and encouraged them to consider participating in a Solo/Small Ensemble Festival. (We had 436 students medal in the

Reports from the LMEA Board

2023-24 school year!)

Another point shared with District VIII teachers was that they **MUST** advocate for their individual programs if those programs are to be recognized by administration, peers, and the community. They are the head cheerleader for what is happening in their classrooms, and it is imperative that they share with others the successes as well as the needs. Positive interactions are a necessary part of the profession if they want to have successful programs. Afterall, music communicates to the soul and the message a music teacher communicates can positively change the history of their students' lives.

All district dates can be found on the district website linked above. Look under the “calendar” page. **NEW THIS YEAR...**all LMEA members need to submit a copy of their membership card OR their NAFME receipt (with teacher's name visible) on the Google Form that is located on the district website on the “proof of membership” page. I have asked that everyone work to get on an August/September cycle so that LMEA membership is taken care of at the beginning of the school year so there will be no need to rush to get it done before a registration deadline. **SPEAKING OF DEADLINES...**all deadlines have been posted on the district calendar. Those will be adhered to firmly so that schedules can be sent out in a timely manner. (Large Ensemble Assessment registration will be 6 weeks prior to the event date instead of a month because of bus request deadlines.)

There are three ways that I will communicate information with teachers in District VIII.

1. **Division Specific Google Group**
 - *Email comes from lmeadistrict@gmail.com
 - *CHECK YOUR SPAM FOLDER, if you know I have your correct email address.
 - *Email me if you need me to check your email address.
2. **Remind APP**
 - *[Click HERE to join!](#)
 - *I will send a Remind message for quick reminders, info and division specific updates.
3. **District Website**
 - *[Click HERE to go to the website!](#)
 - *Everything you need to know about District level events can be found here.

Communication within our district has been my number one priority and I encourage you to always check out lmeadistrictviii.org to find event dates, access Registration Forms, and see our District's deadlines. If you are new to our district, please email me and introduce yourself. I will get you into your division specific Google Group so that you will always be “in the know.”

Lastly, if you are not okay, your students will not be okay! Self-care is something that has been neglected in the education profession. Teachers give all day, without much consideration for their own needs. Simple self-care practices can make a huge difference in how you are able to navigate each hour of your day. Please take time to care of yourself!

Do not hesitate to reach out to me with questions, concerns and yes, even complaints.

Reports from the LMEA Board

District IX

Stephanie Robertson



Welcome back to a new school year filled with endless possibilities and opportunities! I hope you had a restful break and are ready to embark on another exciting journey of teaching and learning. Your dedication and passion make a profound difference in the lives of your students, and I am grateful for your unwavering commitment.

Stay connected and informed on District IX information through regularly checking the [LMEA District IX](#) and [LMEA](#) websites. Here you will find everything you need regarding division chairs/officers, meetings, calendar of events, auditions, and other helpful resources for the school year. Also be sure to check your email for important information and reminders.

We have some great leaders who are here to help and be a resource to you this year. I would like to congratulate and welcome Landon Blocker, landon.blocker@stpsb.org, as our new Band Director Association Chair! Cassie Garrett, vocaldivision@lmeadistrictix.org, is our amazing Vocal Director Association Chair. A full list of chairpersons/officers can be found on our LMEA District IX website.

I would also like to welcome the new directors in our District! We are so happy to have you join us and are excited to work and collaborate with you this year!

I want to personally thank Joshua Stearman, past Band Director Association Chair, for his leadership and support throughout his tenure as Band Chair. He has brought innovation, growth, change, and incredible ideas to the Band Director Association and we are truly grateful for all he has done!

As we move forward this school year, let's continue to create an environment of learning and growth, where every note played, and every song sung enriches our students' lives and ignites their love for music. Together, we will make this year a memorable one, filled with beautiful performances, meaningful progress, and joyful moments! Please do not hesitate to reach out to me, stephanie.robertson@lmeamusic.org, or any other director if you have any questions or need anything.

Here's to a fantastic year ahead!

MENTORSHIP PROGRAM



Collaboration - In Person and Virtual
Classroom Management
Resources
Advocacy
Rehearsal Tips
Recruiting
Assessments

[LMEA MENTORING PROGRAM LINK](#)



Administrative Advisory Council Chairman

Tony McCardle



Welcome Back to a New School Year: Inspiring Success and Engagement in Music Education

As we embark on a new school year, it's a pleasure to welcome all our dedicated music educators back to the vibrant and dynamic world of music education in Louisiana. Your passion and commitment to nurturing the musical talents of our students are invaluable, and as we prepare for another year of growth and achievement, it's essential to reflect on creating collective goals and examine the steps that we can take to ensure success.

Encouraging Student Success

Music education is more than just teaching notes and rhythms; it's about inspiring creativity, discipline, and a lifelong love for the arts. As educators, your encouragement and support play a crucial role in your students' success. Here are some strategies to foster an environment where students can thrive:

- **Set Clear Goals:** Establish both short-term and long-term goals for your students. Whether it's mastering a new piece, performing in a recital, or participating in a competition, clear objectives help students stay motivated and focused.
- **Celebrate Achievements:** Recognize and celebrate every milestone, no matter how small. Positive reinforcement boosts confidence and encourages continued effort and improvement.
- **Provide Individualized Support:** Every student learns differently. Tailor your teaching methods to meet the unique needs of each student, offering additional support and challenges as needed.
- **Promote Practice and Persistence:** Encourage regular practice and emphasize the importance of perseverance. Remind students that progress takes time and effort, and that setbacks are a natural part of the learning process.

Keeping Administration in the Loop

Effective communication with school and district-level administration is vital to the success of your music program. Keeping administrators informed about your events, progress, and needs ensures that they understand the value of your program and can provide the necessary support. Here's how you can keep them in the loop:

- **Regular Updates:** Send monthly or quarterly updates to your administration detailing upcoming events, recent achievements, and any challenges you're facing. This keeps them informed and engaged with your program's activities.
- **Invite Administrators to Events:** Extend invitations to your concerts, recitals, and other events. Seeing your program in action helps administrators appreciate the hard work and talent of your students.
- **Request Feedback and Support:** Don't hesitate to ask for feedback or support from your administration. Whether it's for budget allocations, facility improvements, or program expansions, their input and assistance can be invaluable.

Promoting Your Program in the Community

Building a strong community presence is essential for the growth and sustainability of your music program. Utilizing all available resources, including social media, can help you reach a wider audience and garner support. Here are some tips for effective promotion:

- **Leverage Social Media:** Create and maintain active profiles on platforms like Facebook, Instagram, and X (Twitter). Share updates, photos, and videos of rehearsals, performances, and special events. Engaging content can attract followers and keep your community informed and excited about your program.

- **Collaborate with Local Media:** Reach out to local newspapers, radio stations, and television channels to cover your events and achievements. Positive media coverage can raise awareness and support for your program.
- **Engage with Parents and Alumni:** Encourage parents and alumni to share their experiences and successes related to your program. Testimonials and word-of-mouth recommendations can significantly enhance your program's reputation.
- **Host Community Events:** Organize events that involve the community, such as open rehearsals, music workshops, or collaborative concerts with local artists. These events can foster a sense of community and showcase the talents of your students.

Conclusion

As we step into this new school year, let's embrace the opportunity to inspire and nurture the musical talents of our students. By encouraging their success, keeping administration informed, and actively promoting our programs in the community, we can create an enriching and supportive environment for music education in Louisiana. Here's to a year filled with creativity, growth, and harmonious achievements!

Welcome back, and let's make this year a remarkable one for music education!

Tri-M State Representative Lynn Burton



Welcome Back! I hope you had a great summer, and the new school year is starting nicely! Tri-M National Honor Society is the only music honor society for middle/junior high school and high school students in the country. Tri-M provides opportunities to recognize students that perform at a high level both academically and musically, while fostering student leadership. Currently there are more than 2,100 chapters, involving more than 84,000 students.

Our Louisiana chapters were busy last year, sponsoring wonderful and inspiring service activities across the state including: providing stuffed animals for a local children's hospital, serving as volunteers for Arts Night at a nearby primary school, Park Clean-Up Day, Adopt a 5th Grader, making and stuffing Christmas goodie bags for area nursing homes, serving as ushers for various concerts, and one Tri-M chapter organized their school's Veterans Day program. In addition to service opportunities, our chapters provided numerous musical performances within their communities. If you would like to view photo submissions of these wonderful events led by Louisiana chapters, click [here](#).

As you work your way through the school year, some opportunities to keep in mind are listed below:

- **Chapter of the Year** - You can submit an application for Chapter of the Year every year. The forms will be published in the spring.
- **Tri-M Recognition of Excellence Award** (awarded to an outstanding chapter member).
- **The Peter Marsh Foundation** - A non-profit foundation which awards scholarship money to high school students and grants to middle school teachers across the country. You can read more about this grant opportunity [here](#).

If you would like information about starting a Tri-M chapter at your school, please visit the [start-up guide](#) on the NAFME website, or feel free to reach out to me at LBurton@lmeamusic.org.

Best wishes for a great school year!

TRI-M UNITES STUDENTS THROUGH THEIR LOVE OF MUSIC.



LALF

Ginny Medina-Hamilton



Update 8/2024



In June, LMEA participated in NAFME's National Hill Day in Washington, DC along with state MEA's from around the country. Thanks to a national grant, NAFME offered on-site training to an advocacy leader from each state prior to Hill Day with additional trainings virtually throughout the upcoming school year. Ginny Medina-Hamilton attended the Advocacy Leadership Initiative (ALI) training and will be part of the ALI throughout the year. On Hill Day, Brett Babineaux, past president, and Ginny visited with staff members from the offices of Representatives Letlow, Johnson, Carter, and Higgins and Senators Cassidy and Kennedy. Brett and Ginny discussed the importance of preserving our amazing Louisiana musical and arts culture through music education. We were excited to learn that 100% of the staff members with whom we met played musical instruments!

We have formally invited each Representative and Senator to our LMEA Professional Development in January and have some promising responses!

This experience has given us some background and confidence in hosting our own statewide Hill Day for this upcoming year. We are excited to begin sharing that information with you soon!

Louisiana Roots Music Ed Collective

Gregg Griffin



Beyond the Status Quo: A Culturally Responsive Approach to Music Education in Louisiana

Louisiana has always resonated with a distinct sound, setting it apart from the rest of the United States. The unique circumstances that have shaped the state's diverse cultures have left a lasting impact on Louisiana's sights, sounds, and cuisine. Louisiana has gifted the world with extraordinary music across multiple genres, but it is the birthplace and home of Jazz, Créole, Cajun, and Zydeco music.

Despite this rich musical legacy, music education in Louisiana tends to follow the national status quo. Most young musicians participate in ensembles such as band and choir, or, in rare cases, orchestra. While these programs are valuable, they often lack diversity and may fail to reflect the musical interests of the broader student body.

However, what if things were different? Imagine if Louisiana embraced the diverse cultural backgrounds of its students and introduced its unique sounds into the classroom. Such an approach could yield lasting positive effects across several areas.

First, connecting students to their cultural roots through the music of their families offers a unique opportunity to explore heritage and identity. This connection could bridge generational gaps, fostering communication and creating memories that contribute to the preservation and growth of these cultures.

Second, consider the potential impact such an ensemble could have on local communities. A well-executed program would likely gain strong community support. At a time when music programs face challenges in securing funding and relevance, a culturally resonant initiative could draw support from local districts and communities.

Finally, Louisiana's music educators have a unique opportunity. Louisiana gave the world Jazz, which was later adopted, transformed, and marketed back to us. There is a pressing need to safeguard the state's other musical traditions from similar appropriation. This is a chance to position Louisiana at the forefront of music education as an innovator, potentially inspiring programs across the country. Achieving this requires courage, creative thinking, and a willingness to embrace discomfort to set new educational standards.

Similar programs have been established in various regions of the United States for decades. In the Southwest, Mariachi ensembles are prevalent, while Bluegrass programs are well-established throughout the Appalachian region, particularly in eastern Tennessee. Students participating in these programs acquire valuable lifelong experiences, with many continuing their musical pursuits into adulthood. Additionally, these regions sustain vibrant band and choir programs alongside their specialized ensembles.

Consider a scenario similar to the Texas Music Educators Association (TMEA) conference, where attendees are accustomed to hearing traditional school group performances alongside Mariachi performances. In Louisiana student groups performing Créole, Cajun, and Zydeco music could have a similar and significant impact. The inclusion of such unique musical styles at our annual LMEA conference would possibly yield great benefits. For instance, an out-of-town vendor captivated by student performances of Créole songs such as "Jolie Bassette" or "Coulé Rodair" would likely be impressed. This positive experience could generate widespread discussions and elevate interest in Louisiana's rich musical heritage.

From the vantage point of music educators, it can be easy to dismiss certain musical styles as "unserious." The question of "educational merit" often arises when considering music beyond the norm. It is essential to remember that there is no clear divide between "school music" and "fun music"—there is simply music. The current school

Committee Reports

ensemble model emphasizes technique but offers limited opportunities for creative expression, both for students and educators. While educators may assert that they exercise "creative liberties" with tempo and dynamics, merely adjusting speed and volume is often insufficient for musicians seeking meaningful artistic fulfillment. Musicians, especially young ones, crave opportunities for creativity and collaboration, which are often lacking in modern music programs. This creative void may explain why many students abandon their instruments soon after graduation, including some who later pursue careers in music education.

Nontraditional school ensembles provide the creative and collaborative experiences that young musicians desire. The structure of these programs differs significantly from that of a traditional music classroom. In many cases, there is no written music (a practice that might be met with surprise). Instead, music is taught by ear, rote, or through a tablature system—methods often overlooked by conventional music educators. Yet, the result is the same: students are engaged in performing and creating music, which is the fundamental goal of music education.

In conclusion, music educators are encouraged to challenge the rigid status quo. Every music program serves an essential role within schools, and no single approach is inherently superior to another. The objective is for educators to collaborate in addressing the diverse needs of student musicians. By embracing discomfort and exploring unfamiliar musical environments alongside their students, educators can foster growth and discover new directions in music education. Such efforts have the potential to preserve Louisiana's cultural heritage and position the state at the forefront of music education.



Erath Middle School Lâche Pas students preparing for an upcoming performance.

The expert of anything was once a beginner.

Helen Hayes

Submitting an Article to The Louisiana Musician

LMEA wants to hear from you!

LMEA welcomes members to submit articles for inclusion in future editions of The Louisiana Musician. Listed below are the deadlines for submission:

September Issue: Deadline is August 1

November Issue: Deadline is October 1

February Issue: Deadline is January 1

Articles must be submitted in Word format to the LMEA Editor using the form below. Contact [Carolyn Herrington](#), Editor with any questions you may have. [ARTICLE SUBMISSION FORM](#)

We look forward to hearing from you!

ARTICLE INFORMATION:

Length: 1 to 2 pages

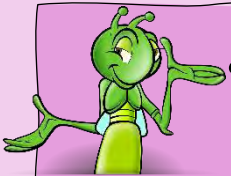
Format: Word (only)

Pictures or Illustrations: Up to six (6) pictures, examples, charts, or illustrations may be submitted.

Author Information: You will be required to upload a headshot and very brief bio.

LMEA's Copyright Policy: It is the author's responsibility to ensure that no copyright issues have been violated by the submission of an article, including images, examples, illustrations, and charts. The form, [LMEA's Copyright Policy for Articles Submitted to The Louisiana Musician](#), will need to be signed and uploaded along with any appropriate documentation (if applicable).

Articles are published at the discretion of the editor and may appear in a later issue.



Today is a good day
To have a good day!

Tom D. Wafer Outstanding Administrator Award

To recognize and honor outstanding school principals, assistant principals, superintendents, and/or assistant or associate superintendents who demonstrate support for and commitment to high-quality arts education programs in their schools. The influence of such administrators is a major factor in improving music education in school systems across the state.



Tom D. Wafer Outstanding Administrator Award

***Jennifer Burris, Principal
Benton Intermediate School
Benton***

Mrs. Jennifer Burris, a dedicated school leader with 24 years of experience in education, has devoted her career to fostering excellence in both academics and extracurricular activities. With a deep appreciation for music, influenced by her daughter's involvement in band throughout her school career and her husband's role as a band director, she has championed the importance of music education throughout her tenure. As Principal of Benton Intermediate School, Mrs. Burris has worked closely with her band directors to expand the school's band program to its largest size in the school's history. Under her leadership, the program continues to thrive.



Tom D. Wafer Outstanding Administrator Award

***Carolyn Favre, Vice President Principal
St. Mary's Dominican High School
New Orleans***

Mrs. Favre has served at St. Mary's Dominican High School for 43 years. During these years, she has served as teacher, class level coordinator, volleyball coach, softball coach, athletic director, dean of students, and for the last 16 years, as principal. Serving in different capacities at Dominican has made her more keenly aware of the importance of providing many opportunities for students to develop their unique gifts, to feel a sense of belonging, and to enrich the student's formation and academic preparation. These insights were particularly important when our school developed St. Mary's Dominican High School's STREAM™ initiative about ten years ago. STREAM™, an

acronym for Science, Technology, Religion, Engineering, Arts, and Math. Although all students benefit from exposure to all areas of study, particular students will uniquely develop their gifts in specific areas more than others. This is Dominican's unique way of integrating important academic areas as students develop attributes we envision for a graduate when completing a Dominican education.

A recent example that Mrs. Favre embraces opportunities to promote the arts occurred when music students presented the idea to have a "mini jazz fest" on the school campus during a long lunch period in conjunction with the first week of the New Orleans Jazz Fest. With the performance of the Dominican's jazz band, the school community also enjoys special foods served at the New Orleans Jazz Fest. The school community gathers on the lawn to enjoy great music and good food. It has become an opportunity to highlight the outstanding student music talent and enjoyable community event.

Barbara C. Butler Award of Excellence – Choral



Purpose of the Barbara C. Butler Award of Excellence

This award recognizes quality high school and middle school choral music programs serving historically disadvantaged student populations.

Meet Barbara C. Butler

Barbara Conrad Butler was inducted into the LMEA Hall of Fame in 1997. She taught vocal music in the Bogalusa City Schools for forty years. Her ensembles consistently earned the highest ratings at district and state festivals, now referred to as assessments. She also had a significant number of students selected to the LMEA All-State Choir each year.

LMEA adopted this award in January, 2021 to honor outstanding work in historically disadvantaged music programs.



Barbara C. Butler Award of Excellence

Elizabeth Robbins

Hammond High Magnet School

Hammond

Mrs. Elizabeth Robbins is in her sixth year as the Choir and Piano teacher at Hammond High Magnet School. She graduated from Southeastern Louisiana University with a bachelor's degree in Vocal Music Education and is a soprano vocalist, pianist, and guitarist. Although she is an American citizen, she grew up as a missionary in several European countries throughout her whole life. It has enabled her to better understand students of many different backgrounds and has provided her with the inspiration to teach in new, exciting ways.

Robert L. Wilhite Award of Excellence – Instrumental

This award recognizes quality high school and middle school instrumental music programs serving historically disadvantaged student populations.



Robert L. Wilhite Award of Excellence

John Havard
Pine Prairie High School &
Bayou Chicot Elementary School
Pine Prairie

John Havard received his Bachelor's in Music Education from the University of Louisiana at Lafayette. Mr. Havard is currently the director of bands at Pine Prairie High School and Bayou Chicot Elementary School where he has been teaching for 7 years. During his employment in Evangeline Parish, Mr. Havard has had students selected into the District III Middle School, High School Honor Bands, and All-State Bands. Mr. Havard also started the Pine Prairie Marching Band that now competes around the state.

Pine Prairie High School and Bayou Chicot Elementary Bands have received the sweepstakes award at the District III Concert Assessment the past two years and are active participants in the Louisiana Concert Band Invitational. In 2021, John received the LMEA Outstanding Young Music Educator Award. His performer experience includes the University of Louisiana at Lafayette Wind Ensemble and Jazz Ensemble, as well as marching in Drum Corps International with The Troopers (2012) and The Madison Scouts (2013 - 2014).

Supporting
Music Education
for Louisiana's Students



LMEA Standard of Excellence Award

The LMEA Standard of Excellence Award was adopted in October 2019. Due to the unprecedented restrictions affecting bands during the pandemic, this award will go into effect in the 2021-22 school year. This award recognizes the results of quality teaching and superior performances in Louisiana high school and middle school instrumental/vocal music programs. Middle School Instrumental Ensembles can submit on EVEN numbered years. High School Instrumental Ensembles can submit on ODD numbered years.



Standard of Excellence Award

Jude Gaspard
L J Alleman Middle School
Lafayette

Jude Gaspard is in his fifth year as the band director at LJ Alleman Middle School in Lafayette, La. He teaches 6th-8th grade and leads a highly successful and respected band program. The LJ Alleman Band Program is known for producing excellent musicians and performing at a very mature level. Previously, Mr. Gaspard was the band director at Erath Middle School for two years. Prior to that he taught for fifteen years at North Vermilion High School where he directed the marching, concert, and jazz bands and also assisted with the middle school bands.

During his time at NVHS, the band doubled in size and received many accolades including several Class A and Small Class Championships at the Louisiana Showcase of Marching Bands. The North Vermilion High School Symphonic Band also performed twice at the Loyola University Concert Band Invitational. Mr. Gaspard's bands receive consistent superior ratings and high marks at the district and state levels. He serves as a guest clinician and adjudicator throughout the state.

Mr. Gaspard earned a bachelor's degree in music education from the University of Louisiana at Lafayette and completed a master's degree in educational leadership from the American College of Education. He is an active church musician, serving as music director and organist at Sacred Heart Catholic Church in Broussard, La. Mr. Gaspard is currently president of the Southwest Louisiana Band Directors' Association and is also a member of the Louisiana Music Educators' Association, National Association for Music Education, and Phi Beta Mu. Mr. Gaspard received the Phi Beta Mu Bandmaster of the Year Award for the state of Louisiana in 2016.

He and his wife, Angela, are proud parents of five beautiful children: Colleen, Adam, Amalie, Corinne, and Anthony.



January 16-19, 2025

Hilton New Orleans Riverside



Standard of Excellence Award

Ronnie Gleason Lafayette High School Lafayette

Ronnie Gleason is in his 32nd year of teaching instrumental music and serves as the Director of Bands at Lafayette High School in Lafayette, Louisiana. He earned his bachelor's degree in music education from the University of Southwestern Louisiana in 1993. This year marks his 15th year at Lafayette High School and his second as the Director of Bands.

Throughout his distinguished career, Mr. Gleason's bands have consistently achieved superior ratings in marching, concert, and jazz festivals at local, state, and national levels. Notable performances include multiple appearances at Carnegie Hall in New York City. In 2013, the Lafayette High School band, under his direction, received an invitation and performed at the National Concert Band Festival in Indianapolis, Indiana.

Mr. Gleason has collaborated with various ensembles over the years, including the Acadiana Symphony Orchestra, Acadian Wind Symphony, and the Skyliners Big Band. His professional affiliations are extensive and include Phi Beta Mu, the National Association for Music Education, the Louisiana Music Educators Association (where he served as Band Division Chairman from 2020 to 2024), the Southwest Louisiana Band Directors Association, and Phi Mu Alpha Sinfonia Fraternity.



Standard of Excellence Award

Katrice LaCour NSU Elementary/Middle Lab School Natchitoches

Katrice LaCour was born March 13, 1966, in Chicago Illinois. His teaching career covers twenty years in Natchitoches Parish. He earned his bachelor's degree in music education in 1991 from Grambling State University. His major instrument is the double bass with a minor in trumpet.

His first position after obtaining his degree was Orchestra and Band Director at Campti /Lakeview Jr/Sr High School in 1991/92 school year. In 1996 he left the teaching profession and toured professionally for Entertainment

America for 15 years. Katrice was a guest entertainer for Royal Caribbean Cruise Lines touring the Eastern and Western Caribbean, Mexican Riviera, Hawaii, and Alaska. In between cruises he entertained military troops performing USO and MWR tours in the United States and South Korea. He returned to teaching in 2009 as Orchestra Director of the N.S.U. Elementary and Middle Lab School.

Throughout his teaching career, LaCour remained active as a guest conductor, adjudicator, and clinician of numerous Honor Orchestras and Festivals. His ensembles have participated in numerous L.M.E.A. and National Festivals since 1991. Additionally, on numerous occasions he was a recipient of the Mayor's Award in Natchitoches Louisiana for his community service with the orchestra.

He currently is the Orchestra Director for the Northwestern State University Elementary/Middle Laboratory schools in Natchitoches Louisiana. In 2017 his middle school orchestra won Gold in the high school division at Festival Disney followed by a Performance at Carnegie Hall in 2019. That same year the Orchestra performed for Louisiana Governor John Bell Edwards. In May 2023 Mr. LaCour and the NSUM Orchestra were recognized by the Louisiana State Legislature with Resolution No. 35 and No.36 for Exceptional Accomplishments. That same year the N.S.U. Middle School Orchestra won Best in Class and Gold overall at Festival Disney.

The State of Louisiana participated in its third Rose Bowl Parade and Mr. LaCour was selected to represent music educators as a float rider in 2024. He is currently the Orchestra Division chairman for L.M.E.A. and has held that position for the past 10 years. Katrice LaCour was inducted into the Louisiana Music Educators Hall of Fame in 2023.



Peter R. Marsh Foundation Middle School Music Grant

The Peter R. Marsh Foundation's \$1250 Middle School Music Grant is available between July 1st and January 31st annually. The

purpose of the Grant is to provide a remarkable venue and experience for students where their emotional senses are awakened, and they are inspired to advance musically, scholastically, and socially. Grants are available to public middle school music teachers in the United States for the acquisition of in-school music classroom equipment and supplies, with additional funding available for student transportation to senior facilities.

The Grantee and their middle school music students are to provide three musical performances at senior facilities in their local or nearby communities during the school year. Each engagement is to include a post-performance student/senior visitation period.

See the Foundation's website <https://www.prmfoundation.org/> for complete Guidelines, Conditions, and Reviews from past participants. Additional teacher comments may be found on the Foundation's [Facebook](#) page.

LA-ASTA President Dr. David Saccardi



Welcome back from what I hope was a restful and well-deserved summer break. If we haven't met yet, my name is Dr. David Saccardi, and I serve as the president of the Louisiana Chapter of the American String Teacher's Association. Whether you're a seasoned string teacher, just getting started in your career, or you are just string curious, I hope your upcoming school year is filled with meaningful moments with your students and wonderful music making.

I wish to extend my heartfelt gratitude to my dear friend and colleague, Annie Young-Bridges, who recently completed her term as LA-ASTA president. Under her leadership, many important behind-the-scenes items were accomplished to help grow our state chapter. This includes the renewal of 501-c3 status for our state chapter, the design and launch of a new website, and more events being offered for string teachers around the state.

As we look forward to the new school year, there are several events worth noting that I hope are on your radar. The big news this year is that Allstate Orchestra is moving to New Orleans and will be adding a middle school component. This is a fabulous opportunity for those of you who teach middle school to become more involved with both LA-ASTA and LMEA. There will be several clinics and events specifically for string teachers at the LMEA conference this year as well, and we are working with the conference organizers to provide more string-specific vendors as well.

In addition to LMEA and Allstate, LSU will once again be hosting the Stately Oaks Music Festival on February 6-8. This event will be open to both middle school and high school string players, and just like last year's successful inaugural event, will be director-nominated. This year, the high school orchestra will be directed by Dr. Mark Laycock from Wichita State University, and I will direct the middle school group again with help from some of my graduate students. We hope you'll consider joining us for the event.

If you have never attended a National ASTA conference, I would encourage you to think about joining me in Atlanta this year on March 19-22. This is the preeminent event for string teachers around the country, with content and events geared specifically toward what we do every day. Start thinking now about budgeting for the conference, asking for financial help from administrators, and making travel plans. If you have questions about attending or paying for the conference, I'm always happy to chat with you about resources you can find. Just email me at dsaccardi@lsu.edu.

Lastly, if you aren't a member already, please consider joining ASTA <https://www.astastrings.org/site/membership> – and taking advantage of all the great membership benefits it offers, including published resources, webinars, mentorship, and the *American String Teacher* journal, which is a quarterly publication that is loaded with teaching tips and advice for public school and private teachers, new and experienced. You will also receive access to all the back issues in the SAGE online database dating back all the way to the 1950s! Our membership numbers have grown considerably in the past two years, and I hope that trend continues.

I hope your school year is rewarding and that you and your student creates some meaningful memories together. Stay tuned for more exciting announcements from LA-ASTA, tell your friends and colleagues about the benefits of string education, and if you have any concerns or suggestions for professional development opportunities, clinicians we can bring in, or events we can stage for your students, we would love to hear from you. We are always looking for new and innovative ways to serve the string teachers and string students of Louisiana.



American String Teachers Association

AOSA President

Erin Fort



RED STICK ORFF UPCOMING WORKSHOPS

Wednesday, September 25th at 7:30pm Virtual (AOSA Members) – Building Classroom Management Skills in the Orff Classroom Kelly Mraz invites you to explore and experience classroom management strategies that have proved helpful in her Orff Schulwerk classroom. Tips on building relationships, teaching diverse learners, dealing with behavior concerns, and culturally responsive teaching will be shared. REGISTER AT: <https://forms.gle/McKbcUY6brKUBffb7>

Saturday, October 5, 2024 | 10am-2pm | Chapter Share

Westdale Heights Academic Magnet, 2000 College Dr., Baton Rouge, LA 7808

Join us as we share lessons, tips and tricks for using orff in the elementary classroom.

REGISTER AT: <http://www.redstickorff.com>

Wednesday, October 16th at 7:30pm Virtual (AOSA Members) – Managing the Mayhem Join Betsy Carter and Linzie Mullins as they inspire you with a wide variety of student-tested and kid-approved material that will give your students something to sing about! REGISTER AT: <https://forms.gle/McKbcUY6brKUBffb7>

LMAA Executive Director

Bill Brent



Welcome back LMAA Adjudicators!

On behalf of the Louisiana Music Adjudicators Association, I would like to extend our heartfelt thanks to Rossi DiBenedetto and his dedicated team of band parents for their exceptional hospitality during our June training session. Your generosity in hosting and providing lunch for 90 music educators at Mandeville High School played a significant role in the success of our event. We are deeply grateful for your support and the warm welcome you extended to everyone in attendance.

We are excited to invite you to our next adjudicator training session on **Saturday, November 23rd**. At this time, we are planning to have this training session in Central Louisiana. We will post the location on our website and on the LMEA Facebook page as soon as the location is finalized. This session is open to everyone, regardless of whether you meet the qualifications to become a member or not. It's a fantastic opportunity to enhance your skills, gain valuable insights, and connect with fellow music educators. If you're interested in attending, please make sure to apply on our website, lamusicadjudicators.org/workshops by **November 8th** to secure your spot. We look forward to seeing you there!

If you have applied for membership and attended the training session in June, we are currently in the process of certifying past ratings. If you have met the qualifications you will hear from our Executive Secretary, Bill Brent by the end of September. We'd like to encourage District Directors to take a look at our Roster of Judges

Reports from Associate Organizations



<https://www.lamusicadjudicators.org/roster.html> and add some of our new members on your adjudication panel this year!

For our current members, we look forward to seeing all of you at the General Membership Meeting in New Orleans for the LMEA Conference. This will be the first time that both disciplines will be meeting at the same time. We hope to see you there!

Best wishes for a fantastic 2024-2025 school year!

Article submitted by LMAA President
Jessica Fain-Blanchard

LBA President *Amy Kutz*

Welcome back from your well-deserved summer break! I'm Amy Kutz, and I'm excited to begin my second year as President of the Louisiana Bandmasters Association. As we dive into the new season, I want to give a big shout-out to the Board Members and everyone who helped make our recent LBA All-Star Bands event a smashing success.

Your hard work—whether you were orchestrating plans, mentoring future stars, or dazzling us with your performances—has truly made a difference. Your combined efforts

have helped us maintain our tradition of musical excellence and camaraderie. Thanks for being the rock stars behind this event, and here's to another year of fabulous music-making!

A huge thank you to the University of Louisiana-Lafayette's faculty and staff for their generous support. Dr. Hochkeppel, Dr. Kulp, Dr. Hilliard, Dr. Landry, Mr. Breaux, and Mr. Harrelson, your open-door policy has made our learning and musical experiences a whole lot easier—sort of like having a backstage pass to greatness. Your dedication hasn't gone unnoticed.

I also want to extend a special thanks to our amazing clinicians, including Dr. Kedric Taylor, Mr. Lorenzo Hart, Blake Bogan, Cory Joy Craig, and Mr. Timothy Loest. Your guidance and patience have been invaluable, not to mention your ability to make even the most challenging pieces sound like a breeze. And a special nod to Cory Joy Craig, our Band Master of the Year, whose leadership and commitment have been nothing short of legendary. Your passion for music and knack for inspiring us all is truly impressive.

And finally, a big thank you to all the band directors who trusted us with your talented students at the LBA All-Star Band event. Your support and dedication to nurturing these young musicians are truly commendable. Your influence goes way beyond the event itself, helping these budding artists grow in ways that will resonate for years to come. We're grateful for your partnership and thrilled to work with you.

As we gear up for the new school year, I encourage directors who aren't yet LBA members to join us. Our membership numbers are climbing, and if you haven't jumped on the bandwagon yet, now's your chance! If you're interested, just visit our website at www.labandmasters.com for an application.

Save the dates for the 2025 LBA All-Star Band: June 1-3. We're thrilled to have Carol Britten Chambers directing our Wind Ensemble for the middle school camp at ULL—so get ready to mark your calendars! Visit our website, become a member, and nominate your students. I can't wait to catch up with you at our January meeting during the LMEA Conference. Wishing you a fantastic school year filled with music, fun, and maybe even a few moments of sheer brilliance!



Reports from Associate Organizations

LAJE President *Michael Brothers*



Welcome back and I hope everyone is off to a strong and successful start to their school year!

Looking back, we again had outstanding participation at the jazz festivals across the state this spring - The Fortier-Gerbrecht Jazz Invitational in February, Loyola Jazz Festival in March, ULM Jazz Clinic and LAJE State Jazz Festival / Bill Evans Jazz Festival, both in April. Looking forward, the 2025 LAJE State Jazz Festival / Bill Evans Jazz Festival will be April 9 – 12 at the Columbia Theatre in Hammond. Dates for the other festivals will be posted as soon as I receive them.

You may have noticed the LAJE website as “under construction.” We are in the midst of a complete overhaul and upgrade to our website. This has been a long-term goal and project in the making and the LAJE Executive Board is very excited this is coming to fruition. The new website will be much improved, providing easier access to tutorial material for both our high school and middle school all-state jazz ensembles, as well as other material to support jazz education in the state. The new website should be up and running as this issue of The Louisiana Musician is released, so our tutorials are available in time for all-state auditions.

I would like to remind our district directors we are again requesting nominations for Outstanding Jazz Educators from each district across the state. I will be in touch with you shortly, if you haven’t heard from me already.

I would also like to encourage everyone to join LAJE. We are here as a resource for jazz education and available at any time to assist with your jazz education needs; from starting a brand-new jazz ensemble in your school, growing your current jazz program, clinicians for your ensembles or lessons for your students, clinicians for district or honor jazz ensembles, etc. Please feel free to reach out to me at any time with questions or requests for assistance.

For our current membership, please remember we have moved our dues to a calendar year and renewals will be due in January at the New Orleans conference.

Again, my best wishes for the school year!

A promotional banner for the Louisiana Music Educators Association (LME) Professional Development Conference & All-State Events. The banner has a light blue background with a purple border. On the left, there is a colorful, abstract graphic with the text "NOLA 2025" and a fleur-de-lis. The main text is centered and reads "Louisiana Music Educators Association Professional Development Conference & All-State Events". Below this, there is a button with the text "Registration Link". At the bottom, there is a decorative banner with the text "Better Together" and "Join Us!" separated by a fleur-de-lis, with a series of colorful dots below it. The dates "January 16-19, 2025" and the location "Hilton New Orleans Riverside" are at the bottom.

Louisiana Music Educators Association

**Professional Development Conference
&
All-State Events**

[Registration Link](#)

Better Together Join Us!

January 16-19, 2025

Hilton New Orleans Riverside

END OF YEAR FINANCIAL REPORT 2023-24

REVENUE	BUDGET FOR 2023-24	REVENUE 2023-24	REVENUE 2022-23
General Revenue:			
Membership Dues (NAfME/LMEA)	\$ 15,000.00	\$ 15,733.00	\$ 14,247.00
Bank Fees (Refunds)		\$ 61.60	
Donations (Unrestricted)		\$ 25.00	\$ 53.90
Communication (Magazine, Newsletter, Website)	\$ 2,500.00	\$ 2,289.82	\$ 2,279.84
General Revenue Subtotal:	\$ 17,500.00	\$ 18,109.42	\$ 16,580.74
Program Revenue:			
Advocacy (Restricted Grants or Revenue)	\$ -	\$ 135.00	\$ 4,000.00
All State	\$ 55,000.00	\$ 61,362.29	\$ 53,078.80
Auditions, Events			
Assessments	\$ 40,000.00	\$ 22,890.40	\$ 36,507.96
District: Large Ensemble, Solo and Small Ensemble			
Standard of Excellence Awards, State Solo, State Large Ensemble			
Professional Development	\$ 44,000.00	\$ 44,636.03	\$ 42,140.96
Conference			
NOLA Conference		\$ -	\$ -
Program Revenue Subtotal:	\$ 139,000.00	\$ 129,023.72	\$ 135,727.72
REVENUE TOTAL	\$ 156,500.00	\$ 147,133.14	\$ 152,308.46

EXPENSES	BUDGET FOR 2023-24	EXPENSES FOR 2023-24	EXPENSES 2022-23
Supportive Services:			
Office (Office Supplies, Postage, Other)	\$ 400.00	\$ 296.17	\$ 418.15
Communication (Google, Magazine, Newsletter, Website, Zoom)	\$ 900.00	\$ 1,035.08	\$ 2,113.24
Awards - Members, Schools, Hall of Fame	\$ 2,000.00	\$ 5,352.62	\$ 1,970.30
Bank Fees (Credit Card, Bank)	\$ 360.00	\$ 481.39	\$ 360.00
Board Meetings - LMEA	\$ 10,000.00	\$ 9,182.62	\$ 10,427.35
Board Meetings - NAFME and Southern Division		\$ 3,058.78	
Salaries	\$ 33,000.00	\$ 33,000.00	\$ 29,000.00
Employer Share - Social Security, Medicare	\$ 3,215.00	\$ 3,761.15	\$ 1,951.23
Contract Employee (Conference Chair)	\$ 9,000.00	\$ 8,250.00	
Professional Services - Accountant, Legal	\$ 2,000.00	\$ 3,530.01	\$ 2,000.00
Professional Service - Insurance (Bonding)	\$ 2,000.00	\$ -	\$ -
Supportive Services Subtotal:	\$ 62,875.00	\$ 67,947.82	\$ 48,240.27
Program Services:			
Advocacy	\$ 4,929.59	\$ 3,940.94	\$ 2,070.41
All State	\$ 53,000.00	\$ 50,645.74	\$ 52,886.93
Auditions			
Events			
Assessments	\$ 10,000.00	\$ 11,689.48	\$ 8,862.44
District: Large Ensemble, Solo and Small Ensemble			
Standard of Excellence Awards, State Solo, State Large Ensemble			
Professional Development			
Conference	\$ 30,000.00	\$ 30,905.43	\$ 28,292.43
NOLA Conference (2025)	\$ -	\$ -	\$ 10,033.62
Program Services Subtotal:	\$ 97,929.59	\$ 97,181.59	\$ 102,145.83
EXPENSES TOTAL:	\$ 160,804.59	\$ 165,129.41	\$ 150,386.10
TOTAL	\$ (4,304.59)	\$ (17,996.27)	\$ 1,922.36

LOUISIANA MUSIC EDUCATORS AWARDS

Official Suppliers For ♦ LMEA Medals

Contact:

Scotty Walker

Executive Secretary

410 Holden Ave, Lafayette LA 70506

(337) 280-8678

DISTRICT FESTIVAL MEDALS

Medals with PURPLE Ribbons (Superior in Concert)

_____ @ \$2.50 each \$ _____

Medals with WHITE Ribbons (Superior in Sight Reading)

_____ @ \$2.50 each \$ _____

Medals with RED, WHITE & BLUE Ribbons (Sweepstakes)

_____ @ \$2.50 each \$ _____

Sub Total \$ _____

(\$8.00 for 1-50 Medals, \$16.00 for 51-100 Medals, \$24.00 for 101-150 Medals) **Shipping \$** _____

TOTAL including Shipping \$ _____

Payment enclosed \$ _____

Ship To: _____
NAME TITLE

School Name: _____ **Phone Number** _____

Street Address: _____

City: _____ **State:** _____ **Zip** _____

Vendors who are interested in receiving information concerning the providing of services to LMEA in the area of T-Shirt sales, photography, and/or recording should contact:

Scotty Walker

Executive Secretary

410 Holden Ave, Lafayette LA 70506

(337) 280-8678

**Thank you
Advertisers!**

DeRidder High School Band

Just Orlando Youth Tours

LA Tech University

Lafayette Music

McNeese State University

Northwestern State University

Sulphur High School Band

The Midwest Clinic

Tuba Essentials

University of Louisiana Lafayette

University of Southern Mississippi